

Data Path : Z:\pestpcbsrv\HPCHEM1\ECD_L\Data\PL081922\
 Data File : PL077206.D
 Signal(s) : Signal #1: ECD1A.ch Signal #2: ECD2B.ch
 Acq On : 18 Aug 2022 13:57
 Operator : AR\AJ
 Sample : N4226-01MSD
 Misc :
 ALS Vial : 21 Sample Multiplier: 1

Instrument :
 ECD_L
ClientSampleId :
 B-1MSD

Manual Integrations
APPROVED

Reviewed By :Yogesh Patel 08/19/2022
 Supervised By :Ankita Jodhani 08/19/2022

Integration File signal 1: autoint1.e
 Integration File signal 2: autoint2.e
 Quant Time: Aug 18 22:57:37 2022
 Quant Method : Z:\pestpcbsrv\HPCHEM1\ECD_L\methods\PL080822.M
 Quant Title : GC Extractables
 QLast Update : Tue Aug 09 09:13:15 2022
 Response via : Initial Calibration
 Integrator: ChemStation

Volume Inj. : 1 µl
 Signal #1 Phase : ZB-MR2 Signal #2 Phase: ZB-MR1
 Signal #1 Info : 30M x 0.32mm x0.2 Signal #2 Info : 30M x 0.32mm x0.5µm

Compound	RT#1	RT#2	Resp#1	Resp#2	ng/ml	ng/ml

System Monitoring Compounds						
1) SA Tetrachlo...	3.418	2.634	17500085	44744231	17.847	15.631
28) SA Decachlor...	8.907	7.736	16084876	40954953	21.306	18.192
Target Compounds						
2) A alpha-BHC	3.882	3.127	75921560	200.6E6	54.846	47.295
3) MA gamma-BHC...	4.218	3.451	71636862	184.7E6	56.021	48.399
4) MA Heptachlor	4.794	3.784	69520793	175.5E6	56.585	48.897
5) MB Aldrin	5.134	4.059	64335541	174.9E6	56.702	49.357
6) B beta-BHC	4.430	3.750	30750106	76044814	54.782	48.670
7) B delta-BHC	4.674	3.974	62164467	186.9E6	55.833	48.914
8) B Heptachlo...	5.567	4.558	64569260	158.6E6	63.945	52.183
9) A Endosulfan I	5.953	4.924	52986643	134.4E6	57.849	49.196
10) B gamma-Chl...	5.821	4.806	68879890	202.1E6	68.722m	66.345
11) B alpha-Chl...	5.900	4.869	58120223	160.5E6	58.232	53.898
12) B 4,4'-DDE	6.078	5.062	61342420	144.7E6	70.302	50.149m#
13) MA Dieldrin	6.230	5.188	61204603	204.7E6	63.032	68.256
14) MA Endrin	6.461	5.457	62314037	145.2E6	76.567m	57.155m#
15) B Endosulfa...	6.690	5.753	41669886	143.0E6	48.580	54.617
16) A 4,4'-DDD	6.603	5.616	93723464	122.9E6	123.024	54.523 #
17) MA 4,4'-DDT	6.914	5.862	54474602	206.8E6	70.889	91.236 #
18) B Endrin al...	6.821	5.932	39275940	73494598	54.474	37.381m#
19) B Endosulfa...	7.052	6.157	46694861	165.3E6	56.478m	71.633 #
20) A Methoxychlor	7.395	6.441	25713387	61069612	57.928	50.772m
21) B Endrin ke...	7.542	6.656	55422569	129.3E6	61.180	50.818
22) Mirex	8.003	6.833	43398338	96383481	61.769	50.378

(f)=RT Delta > 1/2 Window (#)=Amounts differ by > 25% (m)=manual int.

Data Path : Z:\pestpcbsrv\HPCHEM1\ECD_L\Data\PL081922\
 Data File : PL077206.D
 Signal(s) : Signal #1: ECD1A.ch Signal #2: ECD2B.ch
 Acq On : 18 Aug 2022 13:57
 Operator : AR\AJ
 Sample : N4226-01MSD
 Misc :
 ALS Vial : 21 Sample Multiplier: 1

Instrument :

ECD_L

ClientSampleId :

B-1MSD

Manual Integrations

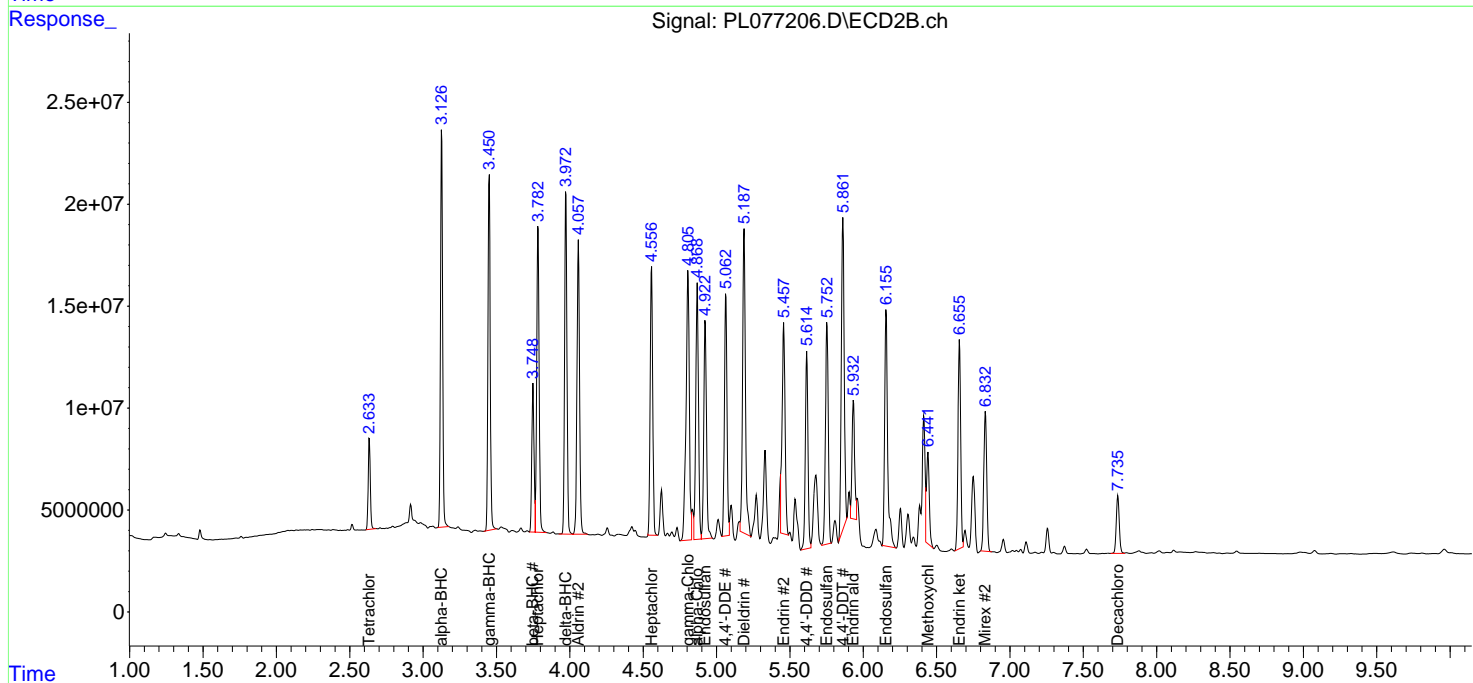
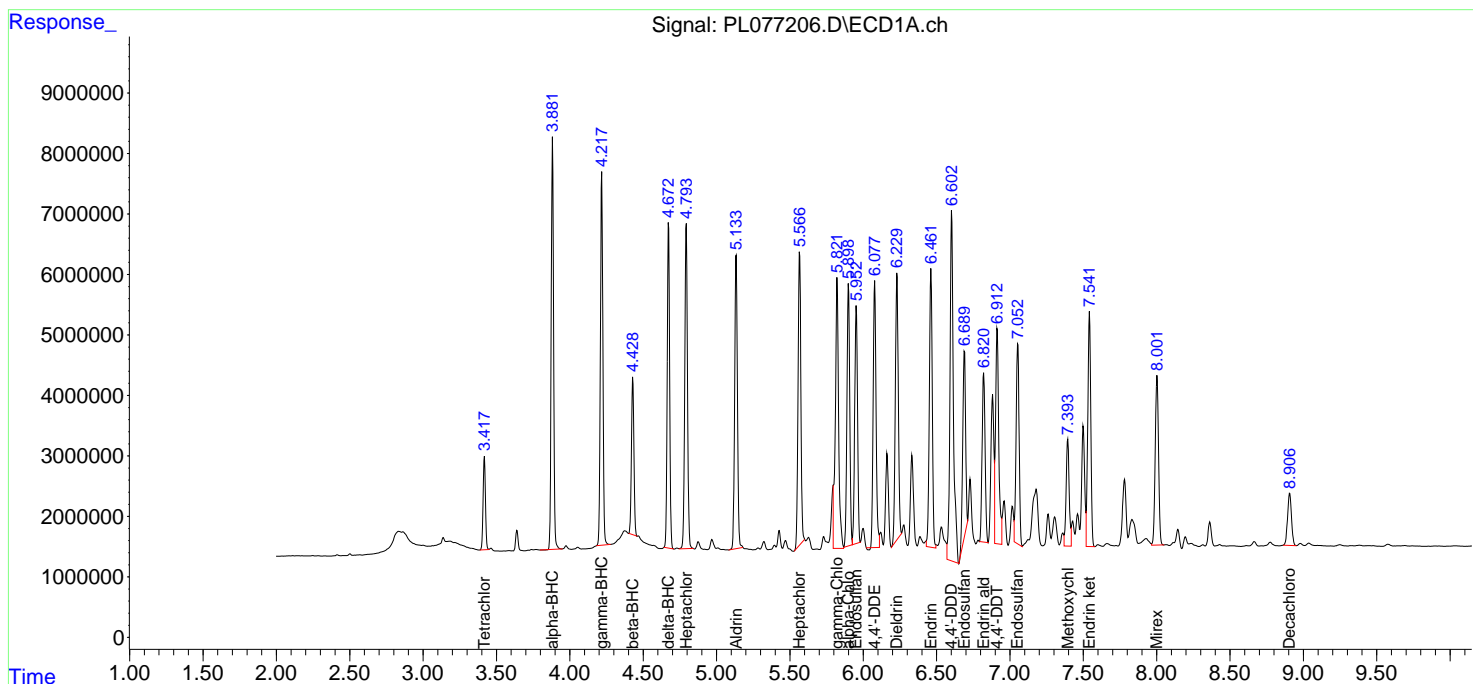
APPROVED

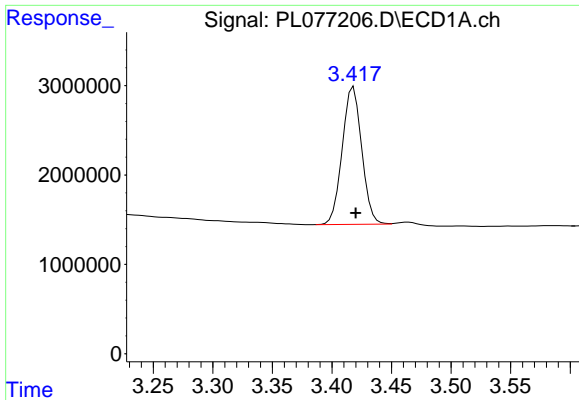
Reviewed By :Yogesh Patel 08/19/2022

Supervised By :Ankita Jodhani 08/19/2022

Integration File signal 1: autoint1.e
 Integration File signal 2: autoint2.e
 Quant Time: Aug 18 22:57:37 2022
 Quant Method : Z:\pestpcbsrv\HPCHEM1\ECD_L\methods\PL080822.M
 Quant Title : GC Extractables
 QLast Update : Tue Aug 09 09:13:15 2022
 Response via : Initial Calibration
 Integrator: ChemStation

Volume Inj. : 1 µl
 Signal #1 Phase : ZB-MR2 Signal #2 Phase: ZB-MR1
 Signal #1 Info : 30M x 0.32mm x0.2 Signal #2 Info : 30M x 0.32mm x0.5µm





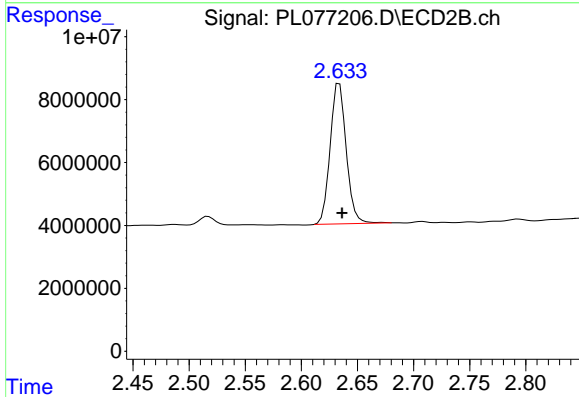
#1 Tetrachloro-m-xylene

R.T.: 3.418 min
 Delta R.T.: -0.002 min
 Response: 17500085
 Conc: 17.85 ng/ml

Instrument :
 ECD_L
 ClientSampleId :
 B-1MSD

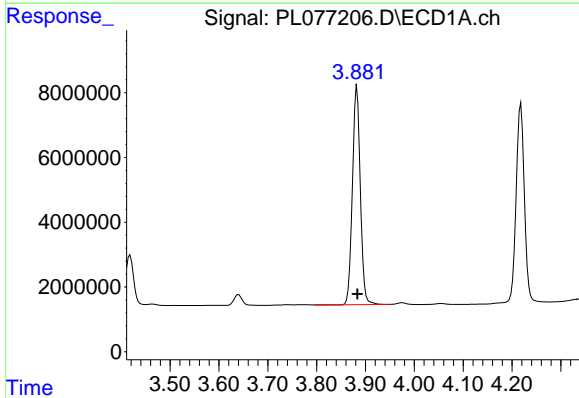
Manual Integrations
 APPROVED

Reviewed By :Yogesh Patel 08/19/2022
 Supervised By :Ankita Jodhani 08/19/2022



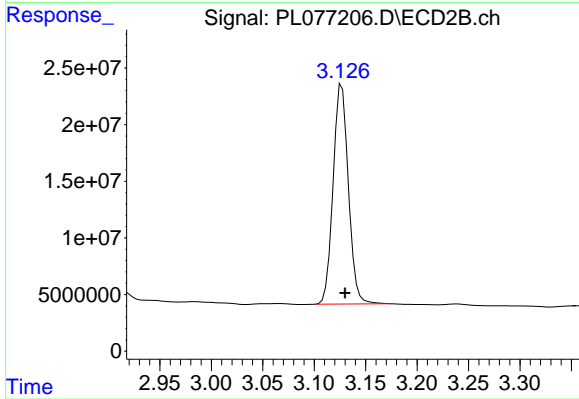
#1 Tetrachloro-m-xylene

R.T.: 2.634 min
 Delta R.T.: -0.003 min
 Response: 44744231
 Conc: 15.63 ng/ml



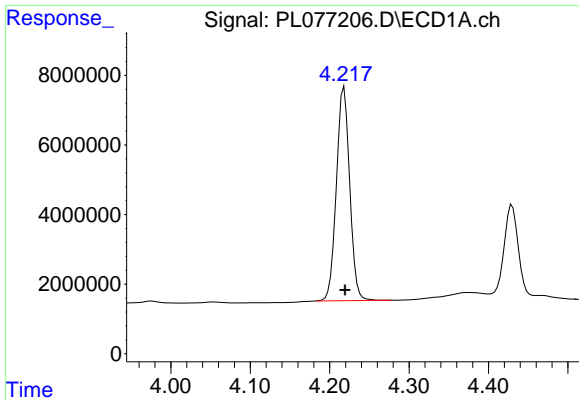
#2 alpha-BHC

R.T.: 3.882 min
 Delta R.T.: -0.001 min
 Response: 75921560
 Conc: 54.85 ng/ml



#2 alpha-BHC

R.T.: 3.127 min
 Delta R.T.: -0.003 min
 Response: 200571056
 Conc: 47.30 ng/ml

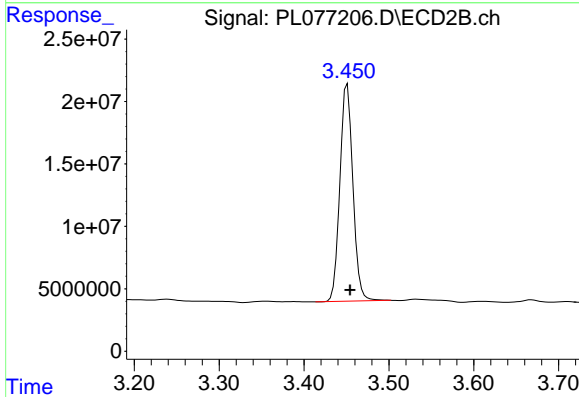


#3 gamma-BHC (Lindane)
 R.T.: 4.218 min
 Delta R.T.: -0.001 min
 Response: 71636862
 Conc: 56.02 ng/ml

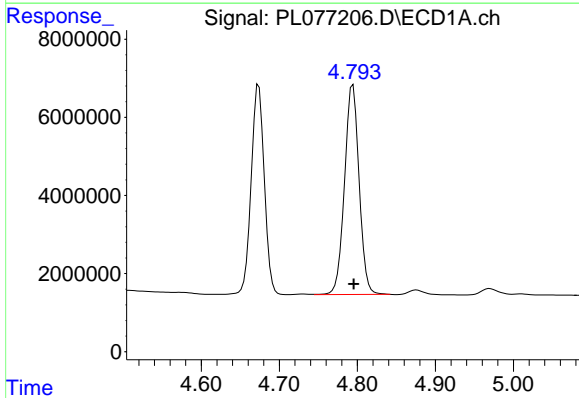
Instrument :
 ECD_L
 ClientSampleId :
 B-1MSD

Manual Integrations
 APPROVED

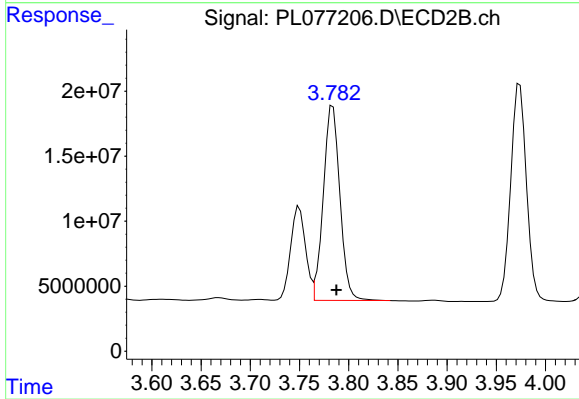
Reviewed By :Yogesh Patel 08/19/2022
 Supervised By :Ankita Jodhani 08/19/2022



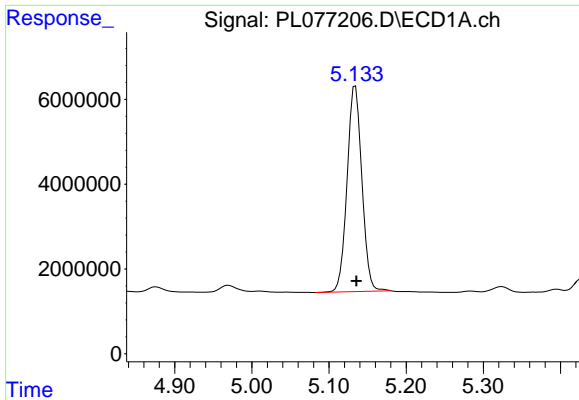
#3 gamma-BHC (Lindane)
 R.T.: 3.451 min
 Delta R.T.: -0.003 min
 Response: 184654438
 Conc: 48.40 ng/ml



#4 Heptachlor
 R.T.: 4.794 min
 Delta R.T.: 0.000 min
 Response: 69520793
 Conc: 56.58 ng/ml



#4 Heptachlor
 R.T.: 3.784 min
 Delta R.T.: -0.004 min
 Response: 175457780
 Conc: 48.90 ng/ml

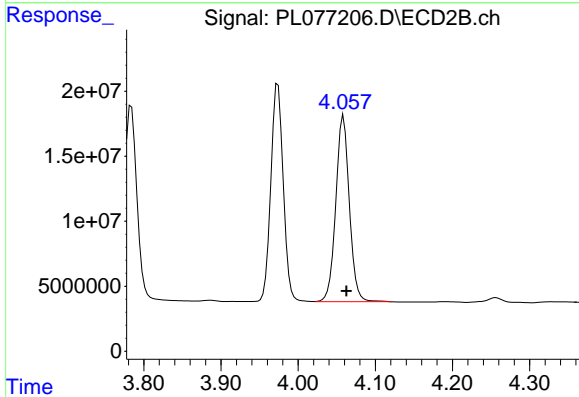


#5 Aldrin
 R.T.: 5.134 min
 Delta R.T.: -0.002 min
 Response: 64335541
 Conc: 56.70 ng/ml

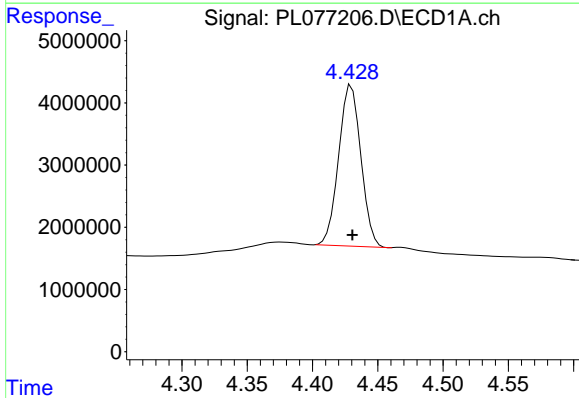
Instrument :
 ECD_L
 ClientSampleId :
 B-1MSD

Manual Integrations
 APPROVED

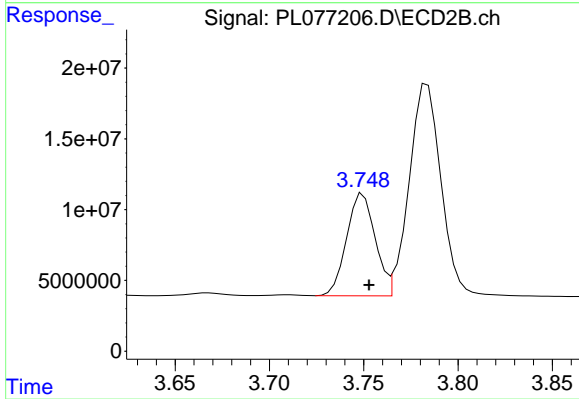
Reviewed By :Yogesh Patel 08/19/2022
 Supervised By :Ankita Jodhani 08/19/2022



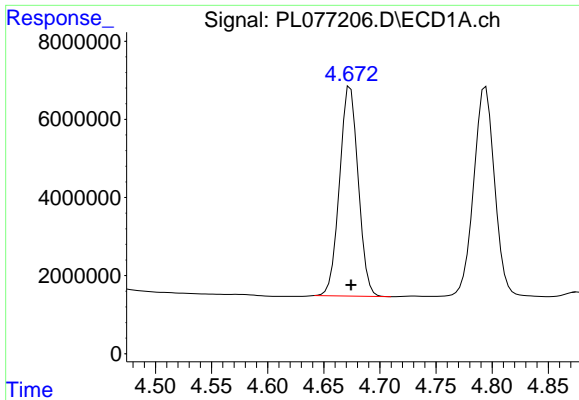
#5 Aldrin
 R.T.: 4.059 min
 Delta R.T.: -0.003 min
 Response: 174862826
 Conc: 49.36 ng/ml



#6 beta-BHC
 R.T.: 4.430 min
 Delta R.T.: 0.000 min
 Response: 30750106
 Conc: 54.78 ng/ml



#6 beta-BHC
 R.T.: 3.750 min
 Delta R.T.: -0.003 min
 Response: 76044814
 Conc: 48.67 ng/ml



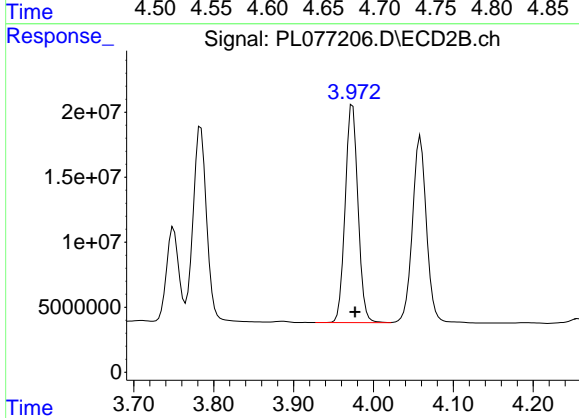
#7 delta-BHC

R.T.: 4.674 min
 Delta R.T.: 0.000 min
 Response: 62164467
 Conc: 55.83 ng/ml

Instrument :
 ECD_L
 ClientSampleId :
 B-1MSD

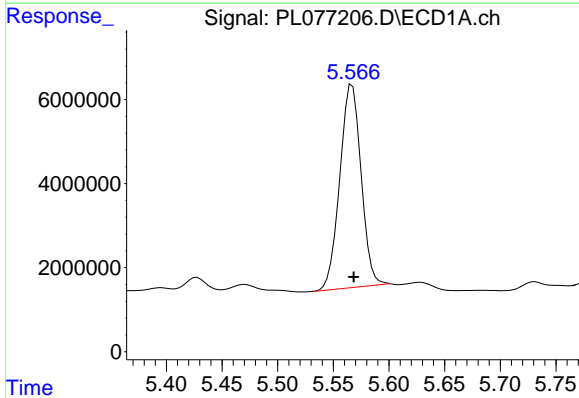
Manual Integrations
 APPROVED

Reviewed By :Yogesh Patel 08/19/2022
 Supervised By :Ankita Jodhani 08/19/2022



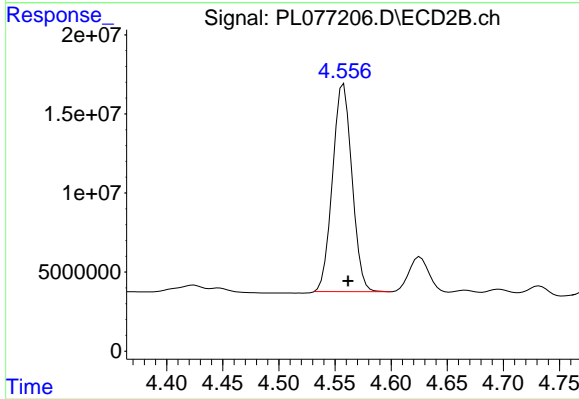
#7 delta-BHC

R.T.: 3.974 min
 Delta R.T.: -0.003 min
 Response: 186941471
 Conc: 48.91 ng/ml



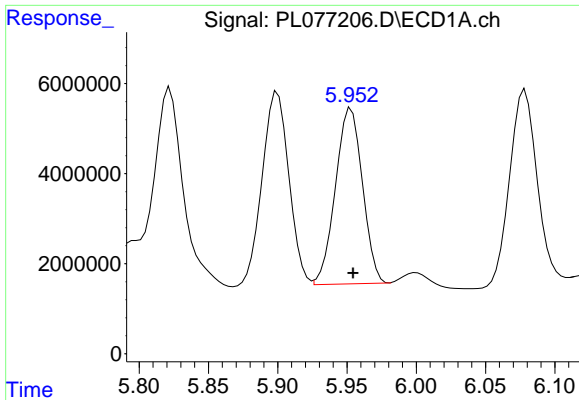
#8 Heptachlor epoxide

R.T.: 5.567 min
 Delta R.T.: -0.001 min
 Response: 64569260
 Conc: 63.95 ng/ml



#8 Heptachlor epoxide

R.T.: 4.558 min
 Delta R.T.: -0.004 min
 Response: 158590258
 Conc: 52.18 ng/ml



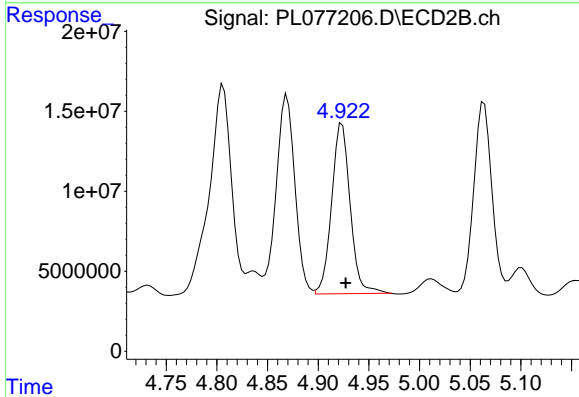
#9 Endosulfan I

R.T.: 5.953 min
 Delta R.T.: -0.001 min
 Response: 52986643
 Conc: 57.85 ng/ml

Instrument :
 ECD_L
 ClientSampleId :
 B-1MSD

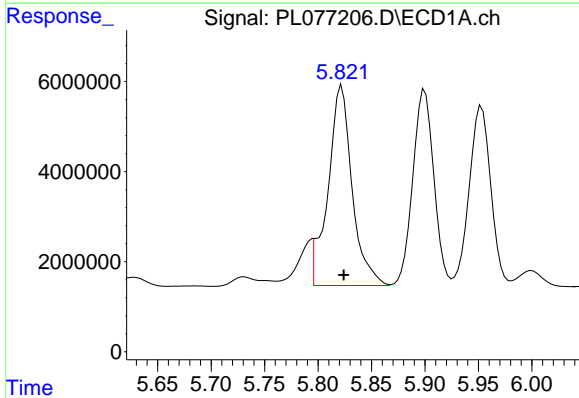
Manual Integrations
 APPROVED

Reviewed By :Yogesh Patel 08/19/2022
 Supervised By :Ankita Jodhani 08/19/2022



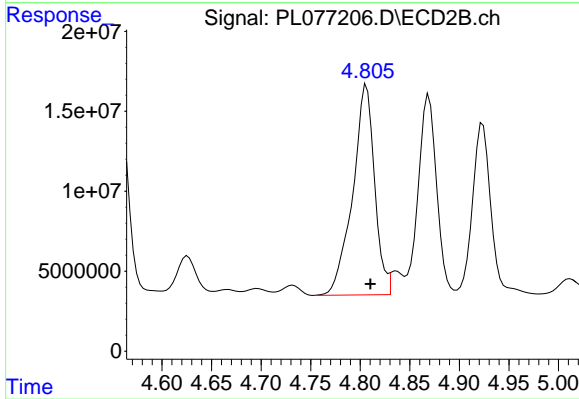
#9 Endosulfan I

R.T.: 4.924 min
 Delta R.T.: -0.004 min
 Response: 134445156
 Conc: 49.20 ng/ml



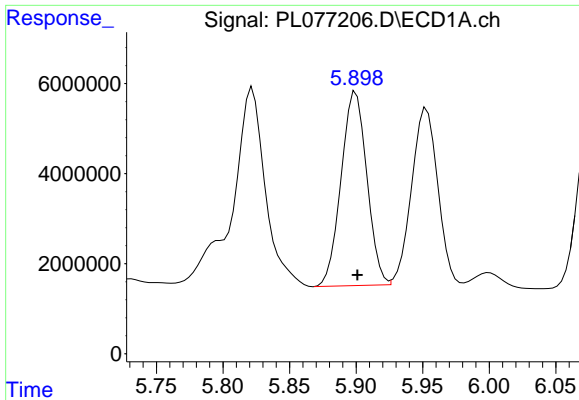
#10 gamma-Chlordane

R.T.: 5.821 min
 Delta R.T.: -0.003 min
 Response: 68879890
 Conc: 68.72 ng/ml m



#10 gamma-Chlordane

R.T.: 4.806 min
 Delta R.T.: -0.004 min
 Response: 202121925
 Conc: 66.34 ng/ml



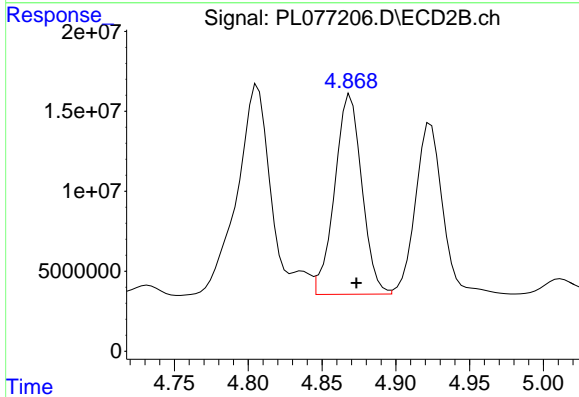
#11 alpha-Chlordane

R.T.: 5.900 min
 Delta R.T.: -0.001 min
 Response: 58120223
 Conc: 58.23 ng/ml

Instrument :
 ECD_L
 ClientSampleId :
 B-1MSD

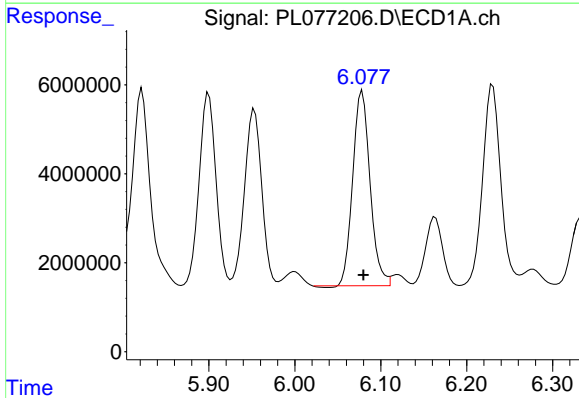
Manual Integrations
 APPROVED

Reviewed By :Yogesh Patel 08/19/2022
 Supervised By :Ankita Jodhani 08/19/2022



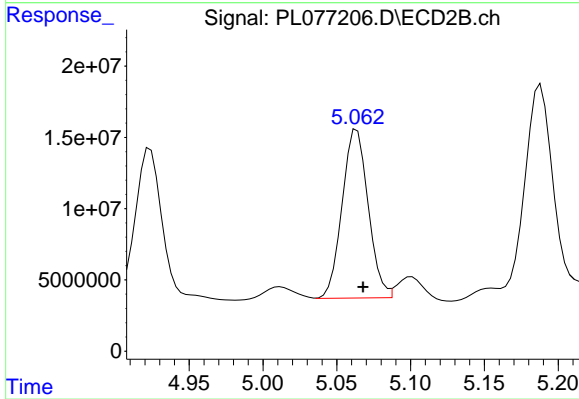
#11 alpha-Chlordane

R.T.: 4.869 min
 Delta R.T.: -0.004 min
 Response: 160503139
 Conc: 53.90 ng/ml



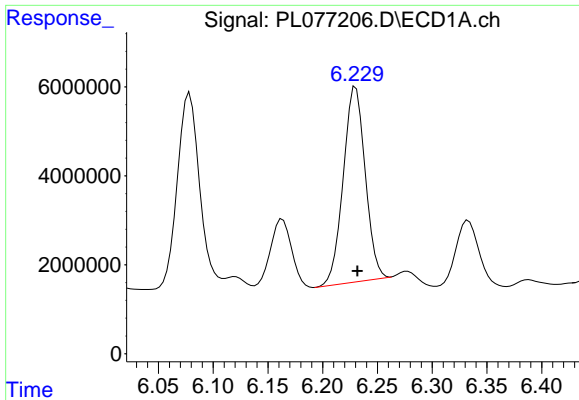
#12 4,4'-DDE

R.T.: 6.078 min
 Delta R.T.: -0.001 min
 Response: 61342420
 Conc: 70.30 ng/ml



#12 4,4'-DDE

R.T.: 5.062 min
 Delta R.T.: -0.006 min
 Response: 144694210
 Conc: 50.15 ng/ml m



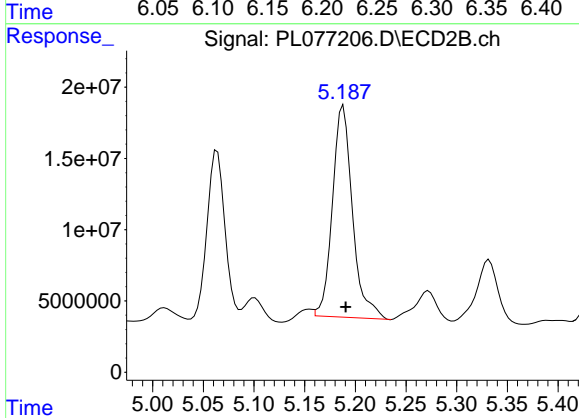
#13 Dieldrin

R.T.: 6.230 min
 Delta R.T.: -0.002 min
 Response: 61204603
 Conc: 63.03 ng/ml

Instrument :
 ECD_L
 ClientSampleId :
 B-1MSD

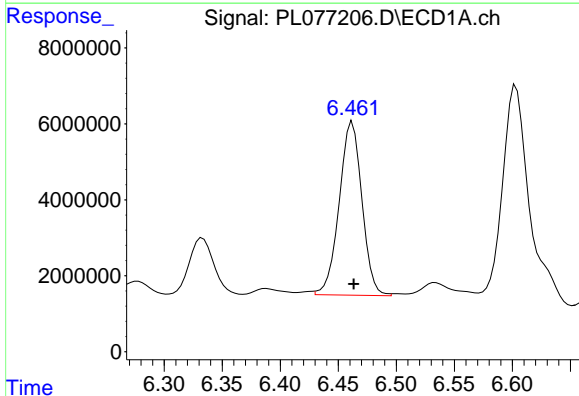
Manual Integrations
 APPROVED

Reviewed By :Yogesh Patel 08/19/2022
 Supervised By :Ankita Jodhani 08/19/2022



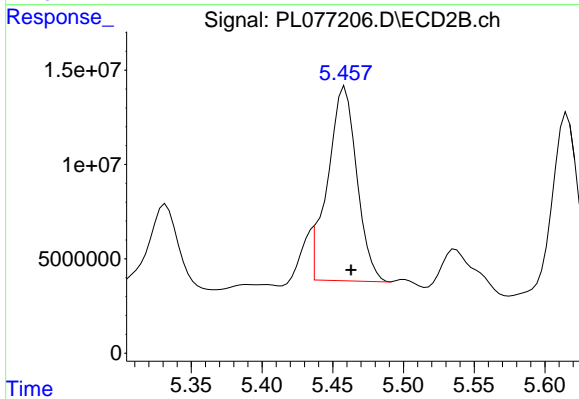
#13 Dieldrin

R.T.: 5.188 min
 Delta R.T.: -0.002 min
 Response: 204742483
 Conc: 68.26 ng/ml



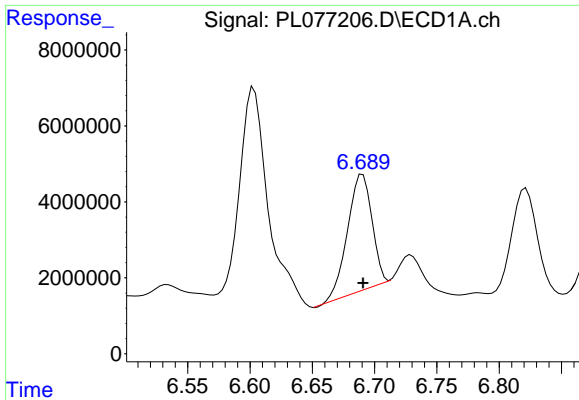
#14 Endrin

R.T.: 6.461 min
 Delta R.T.: -0.003 min
 Response: 62314037
 Conc: 76.57 ng/ml m



#14 Endrin

R.T.: 5.457 min
 Delta R.T.: -0.006 min
 Response: 145192173
 Conc: 57.16 ng/ml m



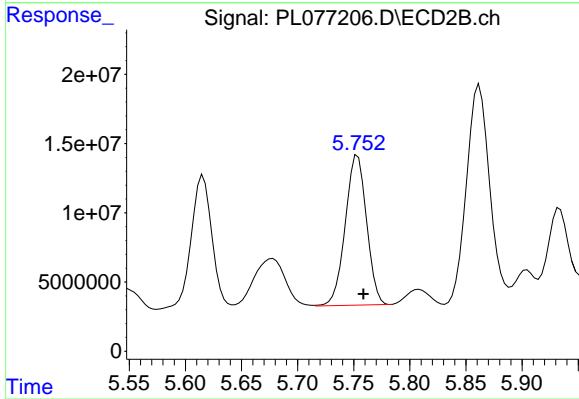
#15 Endosulfan II

R.T.: 6.690 min
 Delta R.T.: 0.000 min
 Response: 41669886
 Conc: 48.58 ng/ml

Instrument : ECD_L
 ClientSampleId : B-1MSD

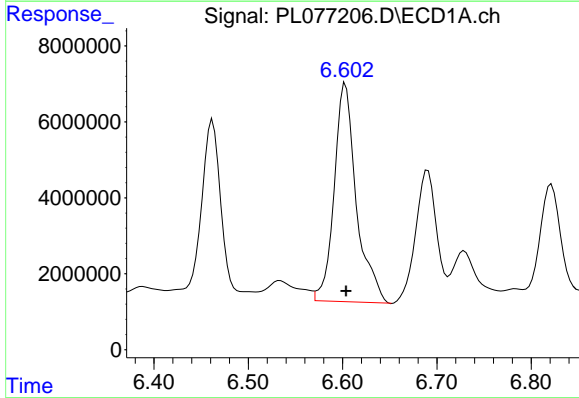
Manual Integrations
 APPROVED

Reviewed By :Yogesh Patel 08/19/2022
 Supervised By :Ankita Jodhani 08/19/2022



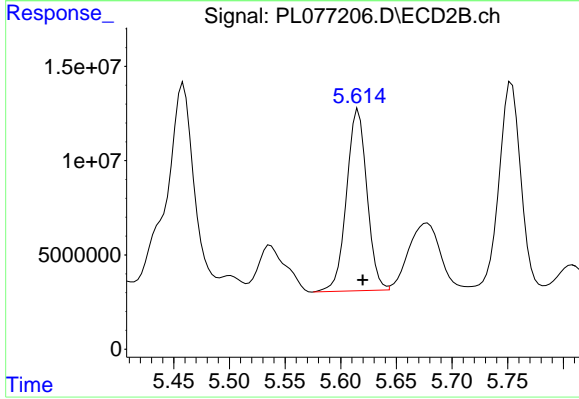
#15 Endosulfan II

R.T.: 5.753 min
 Delta R.T.: -0.005 min
 Response: 143049608
 Conc: 54.62 ng/ml



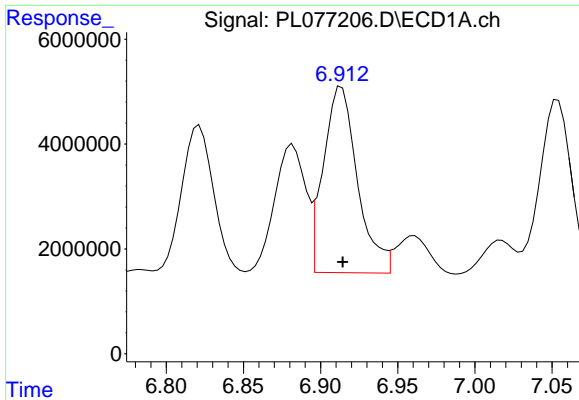
#16 4,4'-DDD

R.T.: 6.603 min
 Delta R.T.: 0.000 min
 Response: 93723464
 Conc: 123.02 ng/ml



#16 4,4'-DDD

R.T.: 5.616 min
 Delta R.T.: -0.004 min
 Response: 122859092
 Conc: 54.52 ng/ml



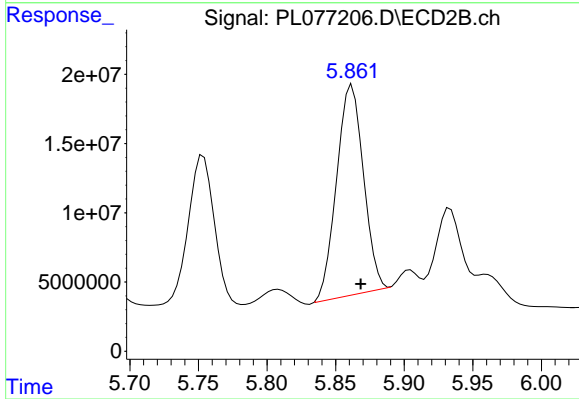
#17 4,4'-DDT

R.T.: 6.914 min
 Delta R.T.: 0.000 min
 Response: 54474602
 Conc: 70.89 ng/ml

Instrument :
 ECD_L
 ClientSampleId :
 B-1MSD

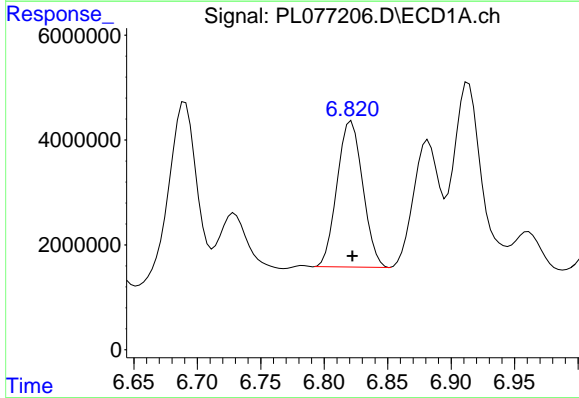
Manual Integrations
 APPROVED

Reviewed By :Yogesh Patel 08/19/2022
 Supervised By :Ankita Jodhani 08/19/2022



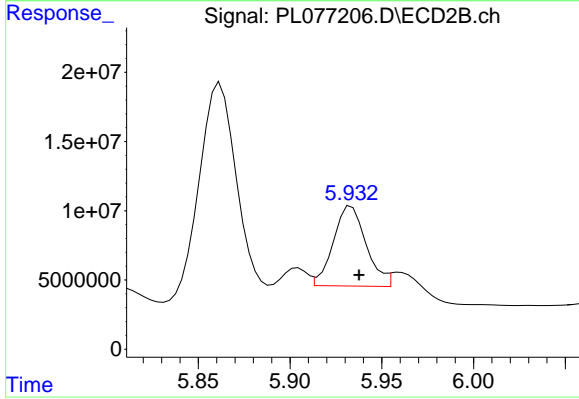
#17 4,4'-DDT

R.T.: 5.862 min
 Delta R.T.: -0.006 min
 Response: 206812163
 Conc: 91.24 ng/ml



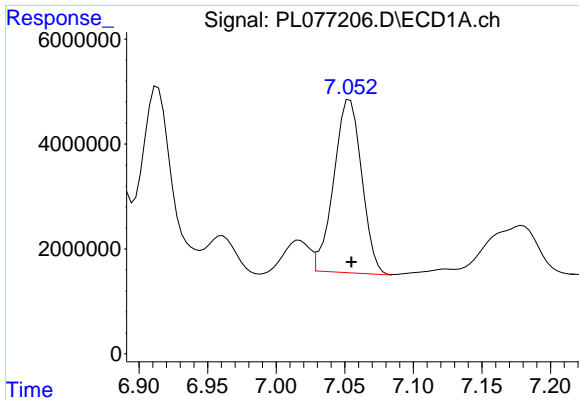
#18 Endrin aldehyde

R.T.: 6.821 min
 Delta R.T.: 0.000 min
 Response: 39275940
 Conc: 54.47 ng/ml



#18 Endrin aldehyde

R.T.: 5.932 min
 Delta R.T.: -0.006 min
 Response: 73494598
 Conc: 37.38 ng/ml m

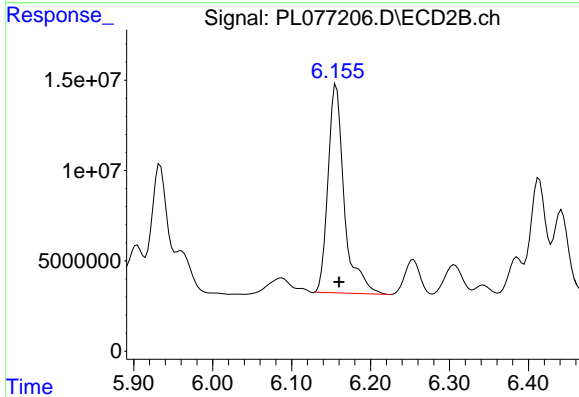


#19 Endosulfan Sulfate
 R.T.: 7.052 min
 Delta R.T.: -0.002 min
 Response: 46694861
 Conc: 56.48 ng/ml

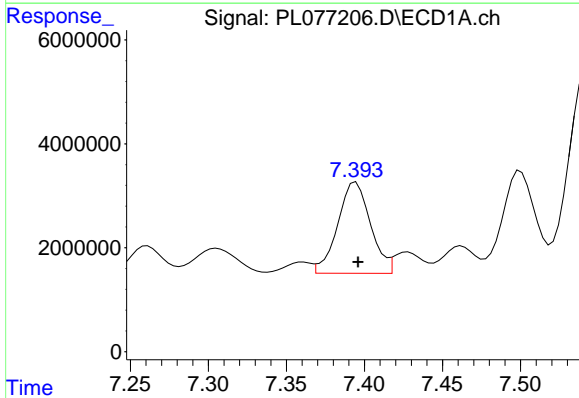
Instrument :
 ECD_L
 ClientSampleId :
 B-1MSD

Manual Integrations
 APPROVED

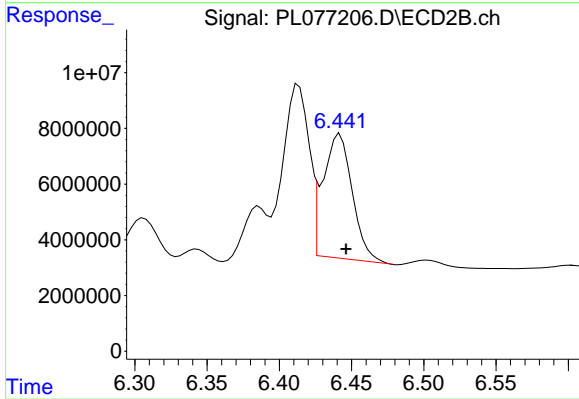
Reviewed By :Yogesh Patel 08/19/2022
 Supervised By :Ankita Jodhani 08/19/2022



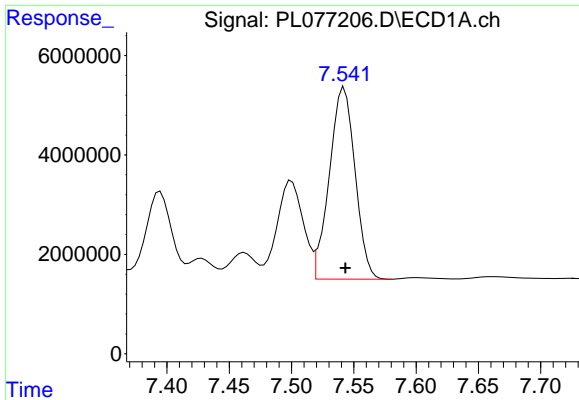
#19 Endosulfan Sulfate
 R.T.: 6.157 min
 Delta R.T.: -0.004 min
 Response: 165261937
 Conc: 71.63 ng/ml



#20 Methoxychlor
 R.T.: 7.395 min
 Delta R.T.: -0.001 min
 Response: 25713387
 Conc: 57.93 ng/ml



#20 Methoxychlor
 R.T.: 6.441 min
 Delta R.T.: -0.006 min
 Response: 61069612
 Conc: 50.77 ng/ml m



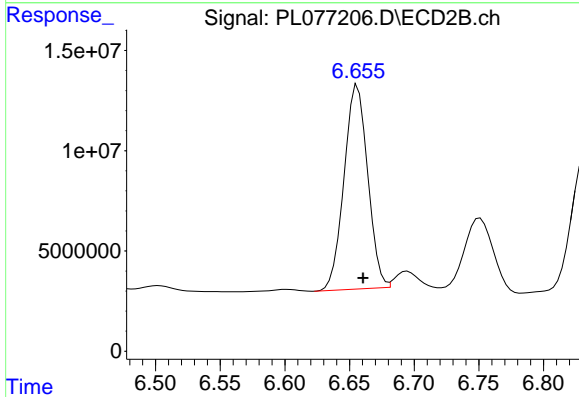
#21 Endrin ketone

R.T.: 7.542 min
 Delta R.T.: 0.000 min
 Response: 55422569
 Conc: 61.18 ng/ml

Instrument :
 ECD_L
 ClientSampleId :
 B-1MSD

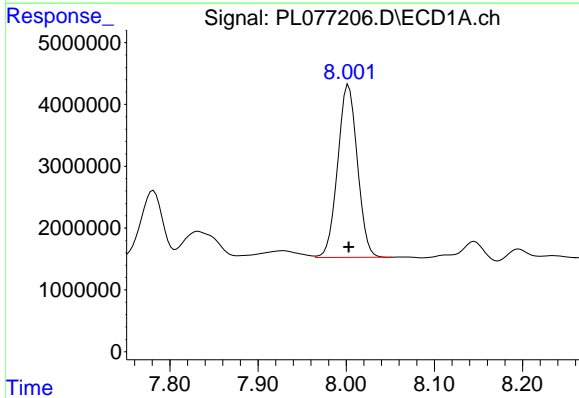
Manual Integrations
 APPROVED

Reviewed By :Yogesh Patel 08/19/2022
 Supervised By :Ankita Jodhani 08/19/2022



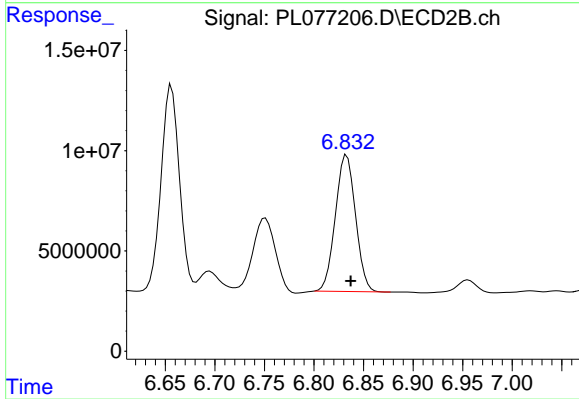
#21 Endrin ketone

R.T.: 6.656 min
 Delta R.T.: -0.004 min
 Response: 129266816
 Conc: 50.82 ng/ml



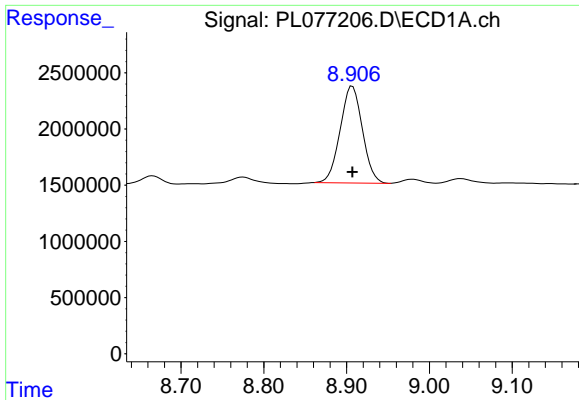
#22 Mirex

R.T.: 8.003 min
 Delta R.T.: 0.000 min
 Response: 43398338
 Conc: 61.77 ng/ml



#22 Mirex

R.T.: 6.833 min
 Delta R.T.: -0.004 min
 Response: 96383481
 Conc: 50.38 ng/ml



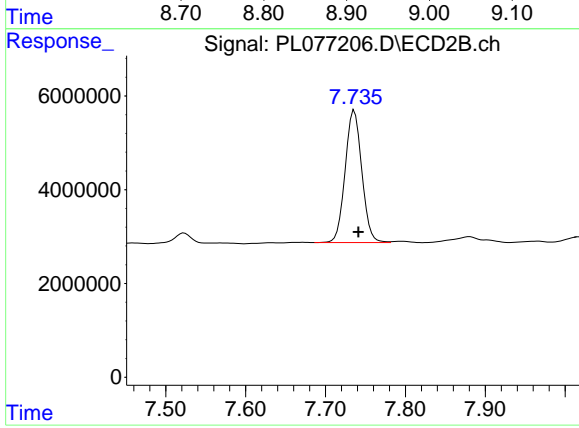
#28 Decachlorobiphenyl

R.T.: 8.907 min
 Delta R.T.: 0.000 min
 Response: 16084876
 Conc: 21.31 ng/ml

Instrument :
 ECD_L
 ClientSampleId :
 B-1MSD

Manual Integrations
 APPROVED

Reviewed By :Yogesh Patel 08/19/2022
 Supervised By :Ankita Jodhani 08/19/2022



#28 Decachlorobiphenyl

R.T.: 7.736 min
 Delta R.T.: -0.005 min
 Response: 40954953
 Conc: 18.19 ng/ml