

Data Path : Z:\pestpcbsrv\HPCHEM1\ECD\_L\Data\PL082118\  
 Data File : PL039352.D  
 Signal(s) : Signal #1: ECD1A.ch Signal #2: ECD2B.ch  
 Acq On : 21 Aug 2018 17:34  
 Operator : AJ\SJ  
 Sample : J4539-05MSD  
 Misc :  
 ALS Vial : 11 Sample Multiplier: 1

Instrument :  
 ECD\_L  
 ClientSampleId :

Integration File signal 1: autoint1.e  
 Integration File signal 2: autoint2.e  
 Quant Time: Aug 22 00:53:44 2018  
 Quant Method : Z:\pestpcbsrv\HPCHEM1\ECD\_L\methods\PL081318.M  
 Quant Title : GC Extractables  
 QLast Update : Wed Aug 15 15:04:22 2018  
 Response via : Initial Calibration  
 Integrator: ChemStation

Volume Inj. : 2 µl  
 Signal #1 Phase : ZB-MR1 Signal #2 Phase: ZB-MR2  
 Signal #1 Info : 30M x 0.32mm x0.5 Signal #2 Info : 30M x 0.32mm x0.25µm

	Compound	RT#1	RT#2	Resp#1	Resp#2	ng/ml	ng/ml
-----							
System Monitoring Compounds							
1)	SA Tetrachlo...	3.304	3.907	128.8E6	57358148	18.419	21.395
28)	SA Decachlor...	7.961	8.895	155.7E6	59590857	22.176	25.679
Target Compounds							
2)	A alpha-BHC	3.733	4.285	607.6E6	259.8E6	51.405	61.692
3)	MA gamma-BHC...	4.008	4.563	559.3E6	232.0E6	52.734	57.619
4)	MA Heptachlor	4.290	5.070	549.8E6	237.0E6	52.230	66.288 #
5)	MB Aldrin	4.527	5.371	534.8E6	220.1E6	53.392	62.184
6)	B beta-BHC	4.263	4.726	236.2E6	104.7E6	50.853	59.752
7)	B delta-BHC	4.455	4.938	590.4E6	246.9E6	54.391	62.013
8)	Heptachlo...	4.963	5.750	527.6E6	209.8E6	55.250	62.382
9)	A Endosulfan I	5.293	6.102	492.6E6	187.4E6	56.256	63.885
10)	B gamma-Chl...	5.185	5.982	542.9E6	207.6E6	54.966	64.152
11)	B alpha-Chl...	5.241	6.056	523.2E6	205.6E6	54.455	63.567
12)	B 4,4'-DDE	5.409	6.212	527.9E6	199.2E6	55.133	64.422
13)	MA Dieldrin	5.531	6.354	557.6E6	199.2E6	57.175	65.771
14)	MA Endrin	5.784	6.569	516.9E6	168.0E6	57.749	65.356
15)	B Endosulfa...	6.059	6.772	497.2E6	168.2E6	57.185	65.499
16)	A 4,4'-DDD	5.920	6.692	448.3E6	151.0E6	56.253	67.441
17)	MA 4,4'-DDT	6.153	6.991	438.2E6	146.9E6	57.812	62.400
18)	B Endrin al...	6.226	6.894	383.3E6	139.2E6	56.555	64.098
19)	B Endosulfa...	6.437	7.117	468.6E6	152.7E6	57.589	63.715
20)	A Methoxychlor	6.701	7.446	234.9E6	77668903	57.404	62.710
21)	B Endrin ke...	6.919	7.579	503.9E6	156.4E6	58.552	63.276
23)	Chlordane-1	4.078	4.938	12992900	246.9E6	41.041	1976.308 #
24)	Chlordane-2	0.000	5.371	0	220.1E6	N.D.	1737.926 #
25)	Chlordane-3	5.185	5.982	542.9E6	207.6E6	497.022	482.438
26)	Chlordane-4	5.241	6.056	523.2E6	205.6E6	523.506	396.442
27)	Chlordane-5	6.059	6.894	497.2E6	139.2E6	1533.142	1504.561

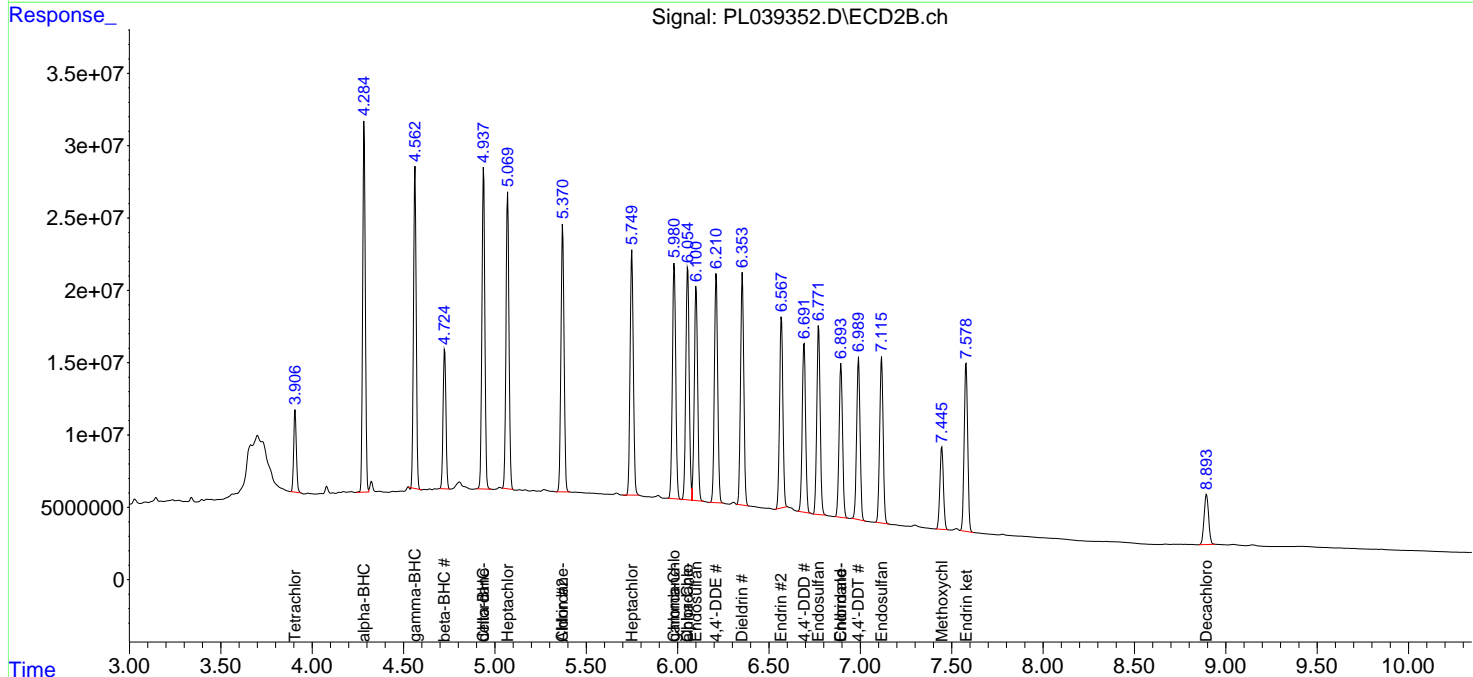
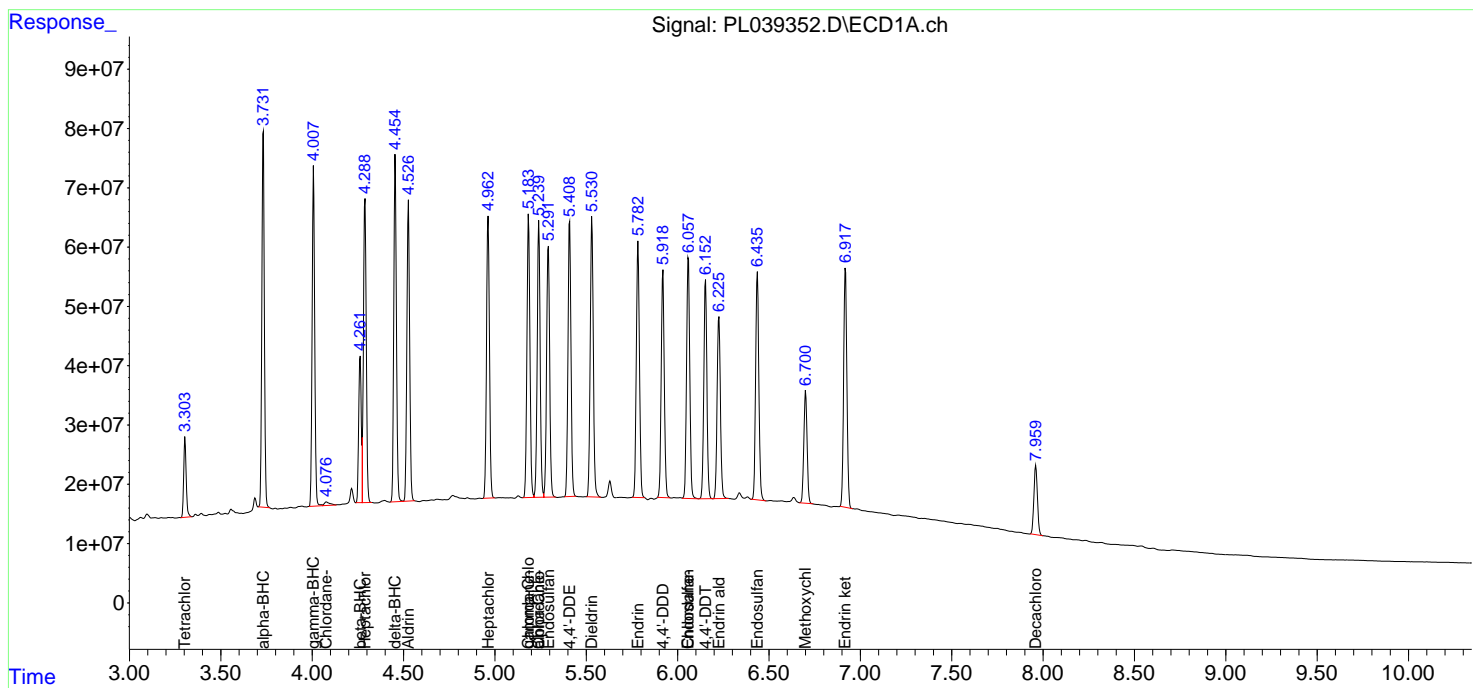
(f)=RT Delta > 1/2 Window (#)=Amounts differ by > 25% (m)=manual int.

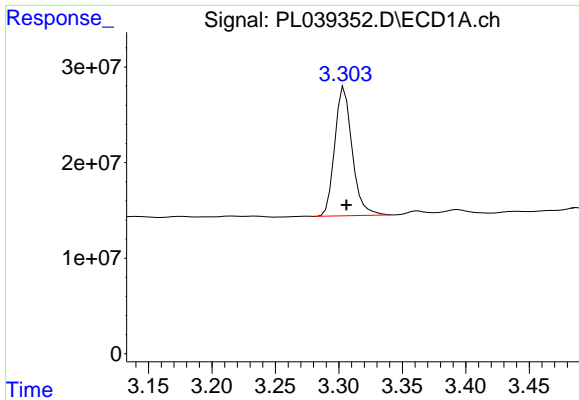
Data Path : Z:\pestpcbsrv\HPCHEM1\ECD\_L\Data\PL082118\  
 Data File : PL039352.D  
 Signal(s) : Signal #1: ECD1A.ch Signal #2: ECD2B.ch  
 Acq On : 21 Aug 2018 17:34  
 Operator : AJ\SJ  
 Sample : J4539-05MSD  
 Misc :  
 ALS Vial : 11 Sample Multiplier: 1

Instrument :  
 ECD\_L  
 ClientSampled :

Integration File signal 1: autoint1.e  
 Integration File signal 2: autoint2.e  
 Quant Time: Aug 22 00:53:44 2018  
 Quant Method : Z:\pestpcbsrv\HPCHEM1\ECD\_L\methods\PL081318.M  
 Quant Title : GC Extractables  
 QLast Update : Wed Aug 15 15:04:22 2018  
 Response via : Initial Calibration  
 Integrator: ChemStation

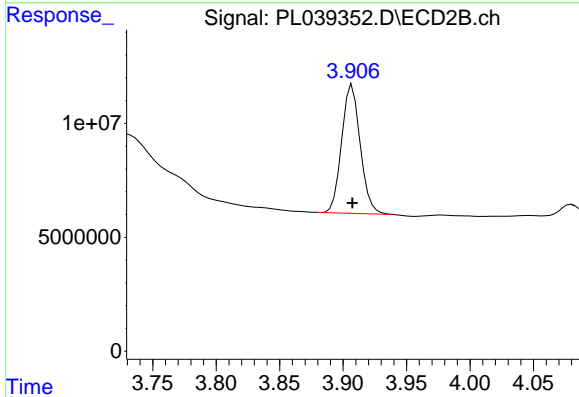
Volume Inj. : 2 µl  
 Signal #1 Phase : ZB-MR1 Signal #2 Phase: ZB-MR2  
 Signal #1 Info : 30M x 0.32mm x0.5 Signal #2 Info : 30M x 0.32mm x0.25µm



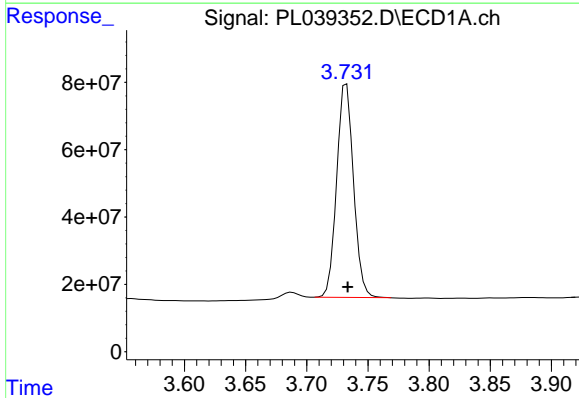


#1 Tetrachloro-m-xylene  
 R.T.: 3.304 min  
 Delta R.T.: -0.002 min  
 Response: 128757198  
 Conc: 18.42 ng/ml

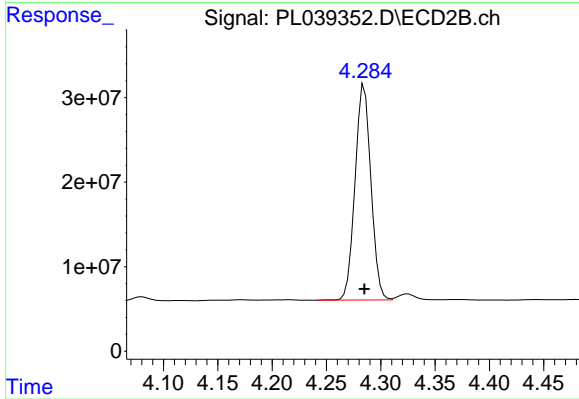
Instrument :  
 ECD\_L  
 ClientSampleId :



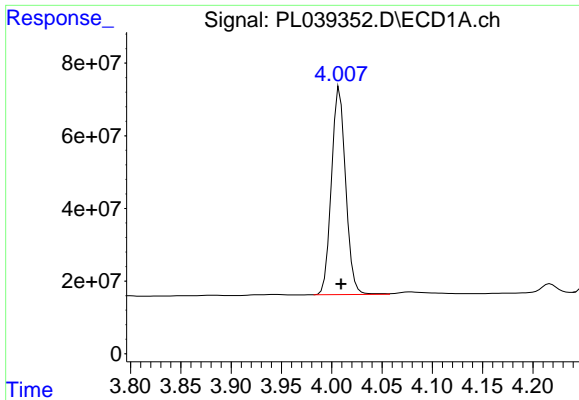
#1 Tetrachloro-m-xylene  
 R.T.: 3.907 min  
 Delta R.T.: 0.000 min  
 Response: 57358148  
 Conc: 21.40 ng/ml



#2 alpha-BHC  
 R.T.: 3.733 min  
 Delta R.T.: -0.001 min  
 Response: 607625261  
 Conc: 51.41 ng/ml

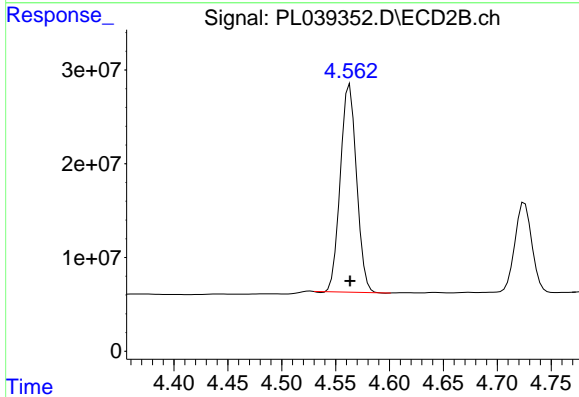


#2 alpha-BHC  
 R.T.: 4.285 min  
 Delta R.T.: 0.000 min  
 Response: 259784992  
 Conc: 61.69 ng/ml

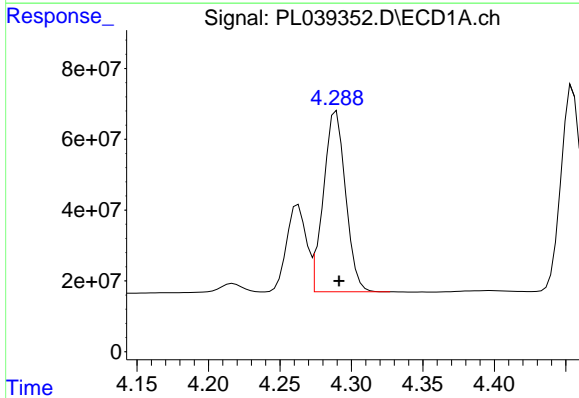


#3 gamma-BHC (Lindane)  
 R.T.: 4.008 min  
 Delta R.T.: -0.001 min  
 Response: 559329086  
 Conc: 52.73 ng/ml

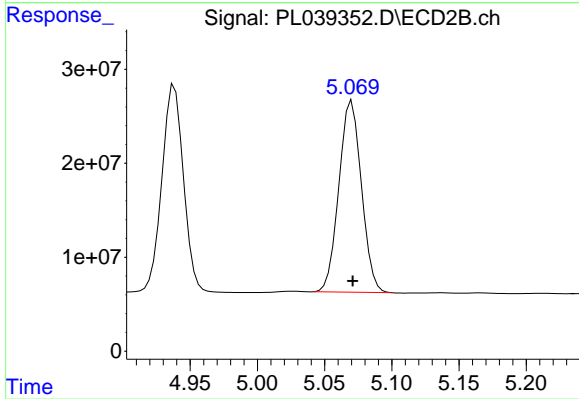
Instrument :  
 ECD\_L  
 ClientSampled :



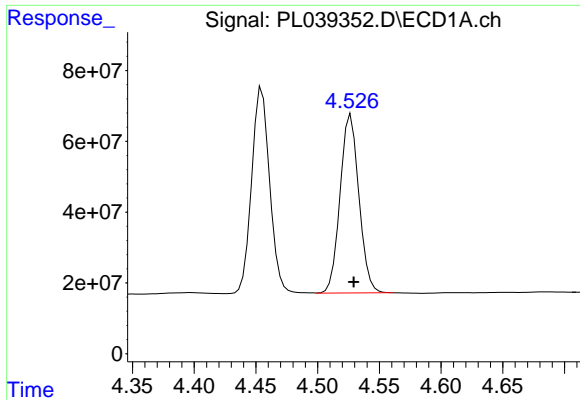
#3 gamma-BHC (Lindane)  
 R.T.: 4.563 min  
 Delta R.T.: 0.000 min  
 Response: 232002540  
 Conc: 57.62 ng/ml



#4 Heptachlor  
 R.T.: 4.290 min  
 Delta R.T.: -0.002 min  
 Response: 549831194  
 Conc: 52.23 ng/ml

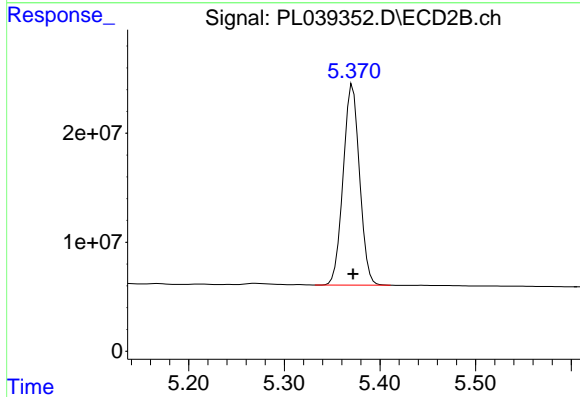


#4 Heptachlor  
 R.T.: 5.070 min  
 Delta R.T.: 0.000 min  
 Response: 237035939  
 Conc: 66.29 ng/ml

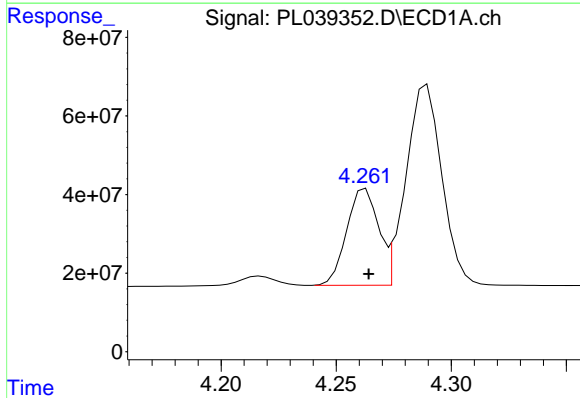


#5 Aldrin  
 R.T.: 4.527 min  
 Delta R.T.: -0.002 min  
 Response: 534766008  
 Conc: 53.39 ng/ml

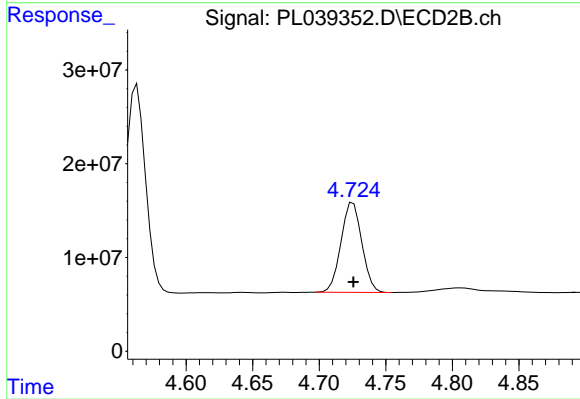
Instrument :  
 ECD\_L  
 ClientSampled :



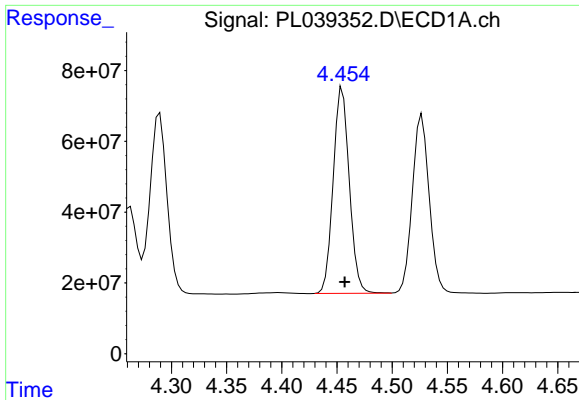
#5 Aldrin  
 R.T.: 5.371 min  
 Delta R.T.: 0.000 min  
 Response: 220134294  
 Conc: 62.18 ng/ml



#6 beta-BHC  
 R.T.: 4.263 min  
 Delta R.T.: -0.001 min  
 Response: 236240522  
 Conc: 50.85 ng/ml



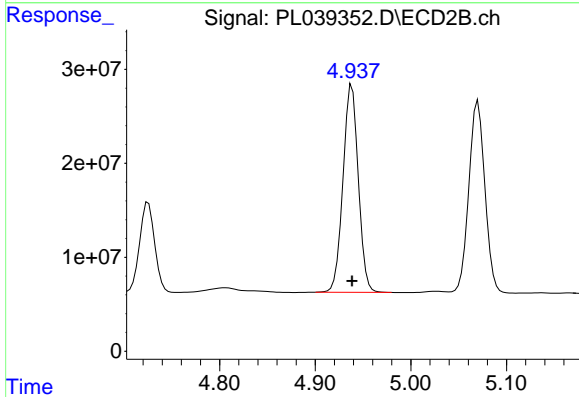
#6 beta-BHC  
 R.T.: 4.726 min  
 Delta R.T.: 0.000 min  
 Response: 104658357  
 Conc: 59.75 ng/ml



#7 delta-BHC

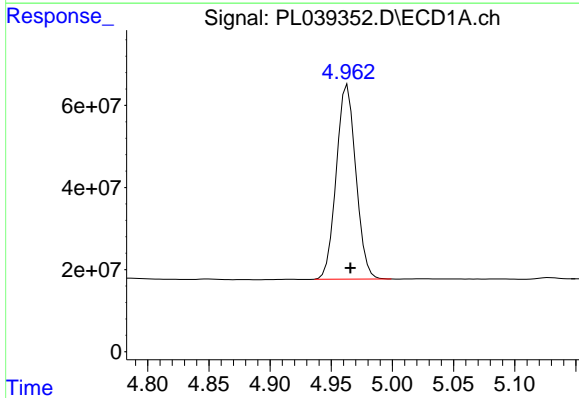
R.T.: 4.455 min  
 Delta R.T.: -0.002 min  
 Response: 590381165  
 Conc: 54.39 ng/ml

Instrument :  
 ECD\_L  
 ClientSampleId :



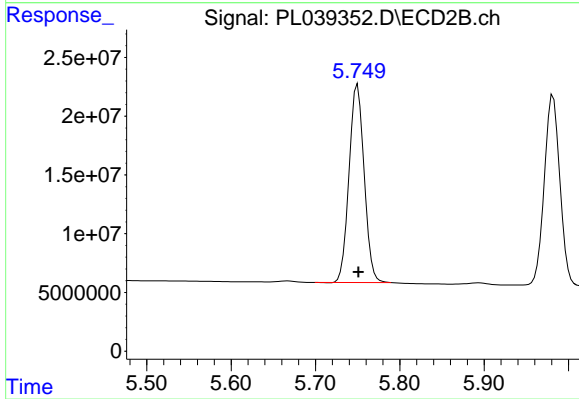
#7 delta-BHC

R.T.: 4.938 min  
 Delta R.T.: 0.000 min  
 Response: 246909595  
 Conc: 62.01 ng/ml



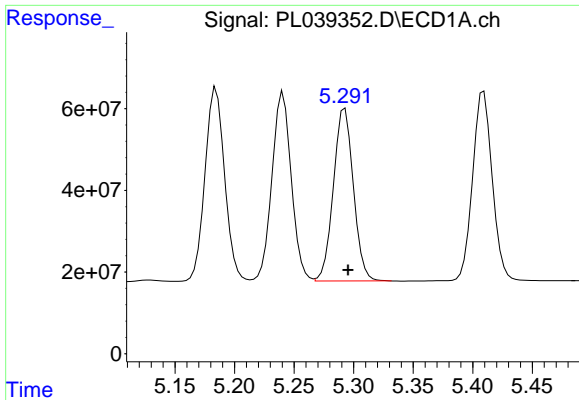
#8 Heptachlor epoxide

R.T.: 4.963 min  
 Delta R.T.: -0.002 min  
 Response: 527598122  
 Conc: 55.25 ng/ml



#8 Heptachlor epoxide

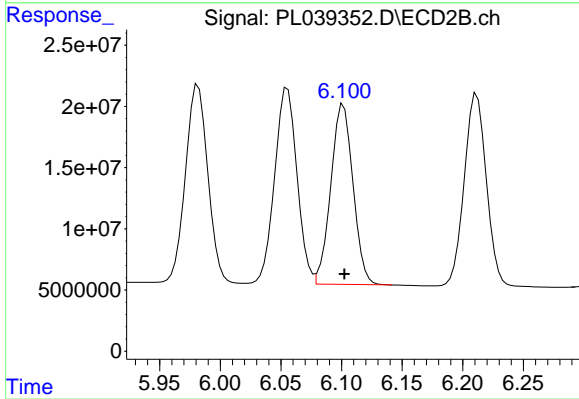
R.T.: 5.750 min  
 Delta R.T.: 0.000 min  
 Response: 209794256  
 Conc: 62.38 ng/ml



#9 Endosulfan I

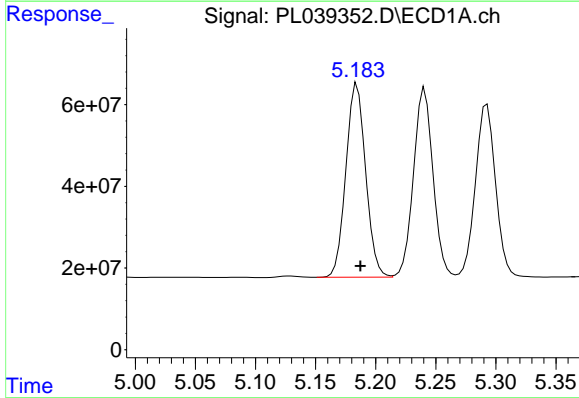
R.T.: 5.293 min  
 Delta R.T.: -0.003 min  
 Response: 492585582  
 Conc: 56.26 ng/ml

Instrument :  
 ECD\_L  
 ClientSampled :



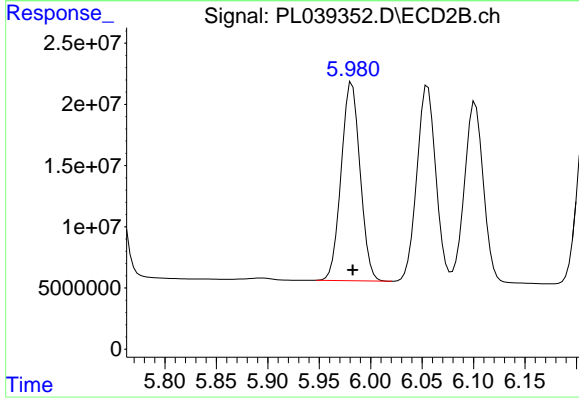
#9 Endosulfan I

R.T.: 6.102 min  
 Delta R.T.: 0.000 min  
 Response: 187410779  
 Conc: 63.89 ng/ml



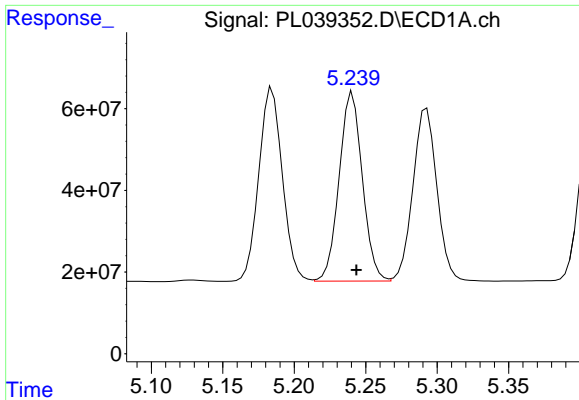
#10 gamma-Chlordane

R.T.: 5.185 min  
 Delta R.T.: -0.003 min  
 Response: 542879677  
 Conc: 54.97 ng/ml



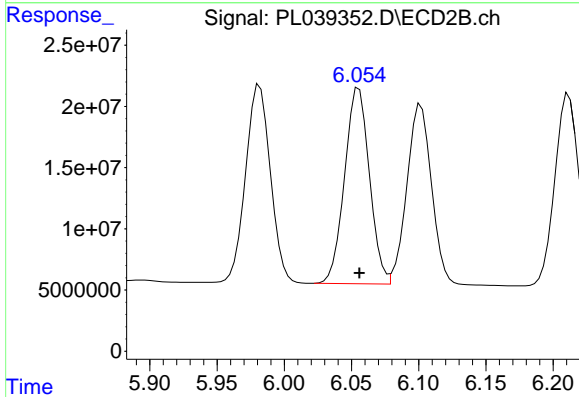
#10 gamma-Chlordane

R.T.: 5.982 min  
 Delta R.T.: 0.000 min  
 Response: 207625583  
 Conc: 64.15 ng/ml

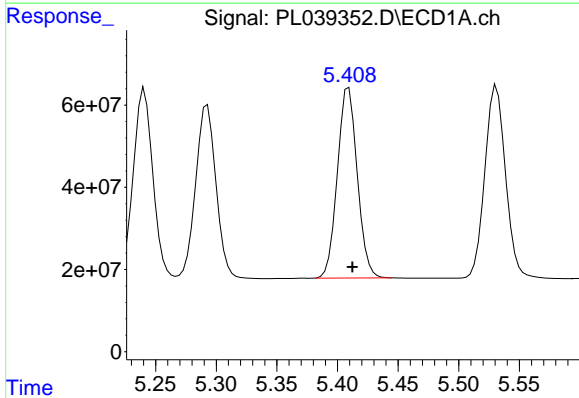


#11 alpha-Chlordane  
 R.T.: 5.241 min  
 Delta R.T.: -0.003 min  
 Response: 523166074  
 Conc: 54.46 ng/ml

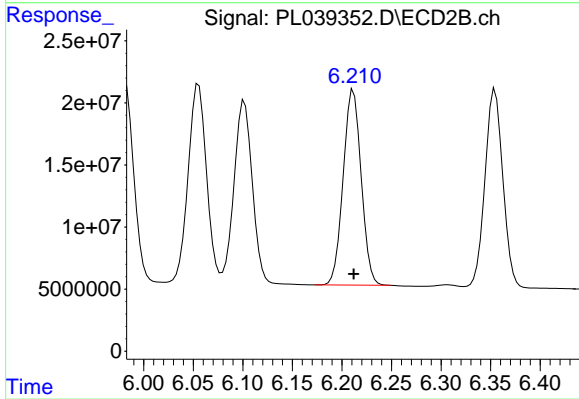
Instrument :  
 ECD\_L  
 ClientSampleId :



#11 alpha-Chlordane  
 R.T.: 6.056 min  
 Delta R.T.: 0.000 min  
 Response: 205642033  
 Conc: 63.57 ng/ml

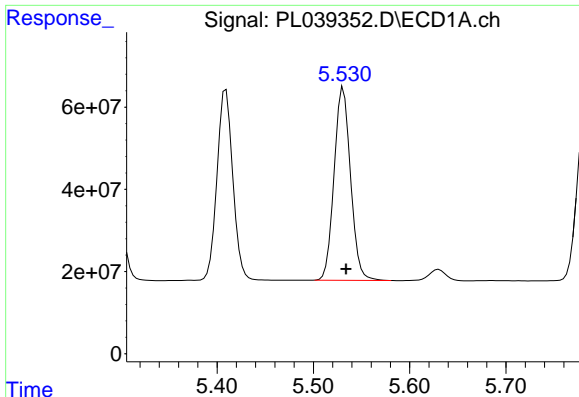


#12 4,4'-DDE  
 R.T.: 5.409 min  
 Delta R.T.: -0.003 min  
 Response: 527948000  
 Conc: 55.13 ng/ml



#12 4,4'-DDE  
 R.T.: 6.212 min  
 Delta R.T.: 0.000 min  
 Response: 199194908  
 Conc: 64.42 ng/ml

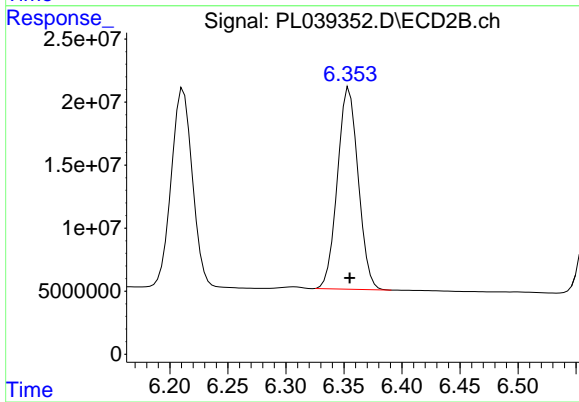




#13 Dieldrin

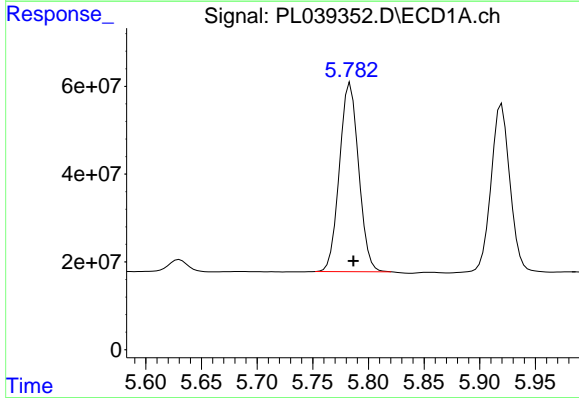
R.T.: 5.531 min  
 Delta R.T.: -0.003 min  
 Response: 557558402  
 Conc: 57.18 ng/ml

Instrument :  
 ECD\_L  
 ClientSampled :



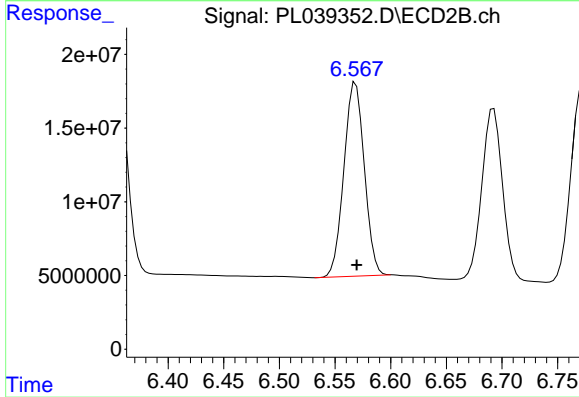
#13 Dieldrin

R.T.: 6.354 min  
 Delta R.T.: 0.000 min  
 Response: 199242908  
 Conc: 65.77 ng/ml



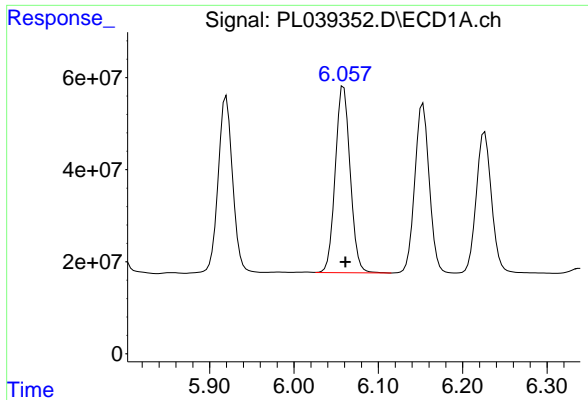
#14 Endrin

R.T.: 5.784 min  
 Delta R.T.: -0.003 min  
 Response: 516913618  
 Conc: 57.75 ng/ml



#14 Endrin

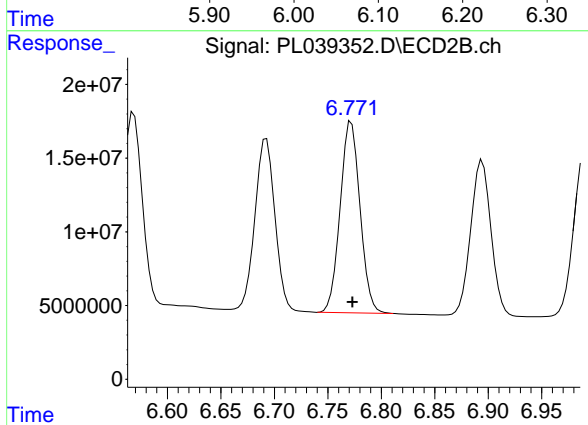
R.T.: 6.569 min  
 Delta R.T.: -0.001 min  
 Response: 168045429  
 Conc: 65.36 ng/ml



#15 Endosulfan II

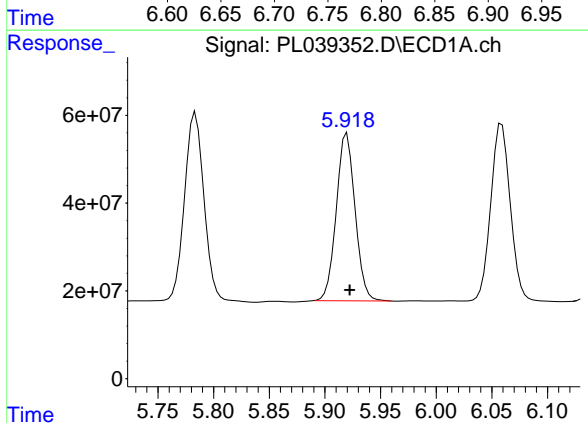
R.T.: 6.059 min  
Delta R.T.: -0.002 min  
Response: 497243765  
Conc: 57.19 ng/ml

Instrument :  
ECD\_L  
ClientSampled :



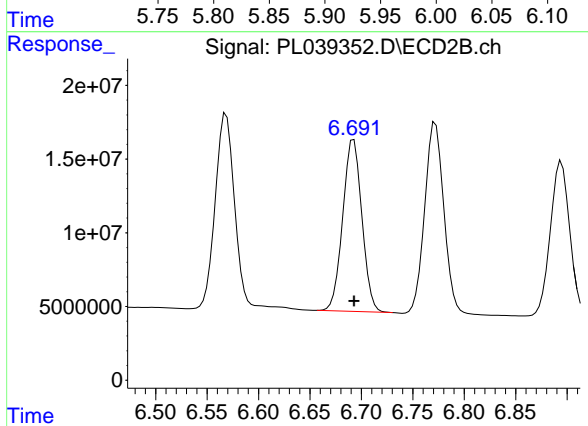
#15 Endosulfan II

R.T.: 6.772 min  
Delta R.T.: 0.000 min  
Response: 168238751  
Conc: 65.50 ng/ml



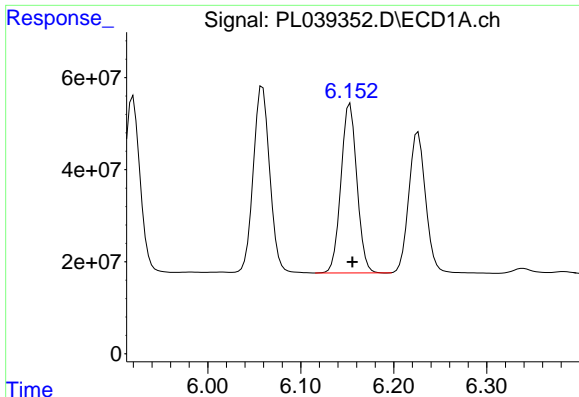
#16 4,4'-DDD

R.T.: 5.920 min  
Delta R.T.: -0.003 min  
Response: 448293703  
Conc: 56.25 ng/ml



#16 4,4'-DDD

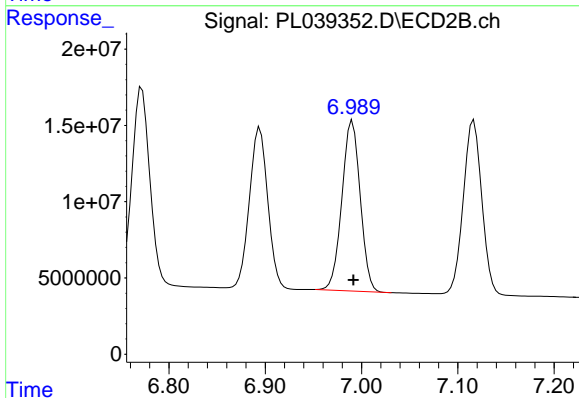
R.T.: 6.692 min  
Delta R.T.: 0.000 min  
Response: 151029152  
Conc: 67.44 ng/ml



#17 4,4'-DDT

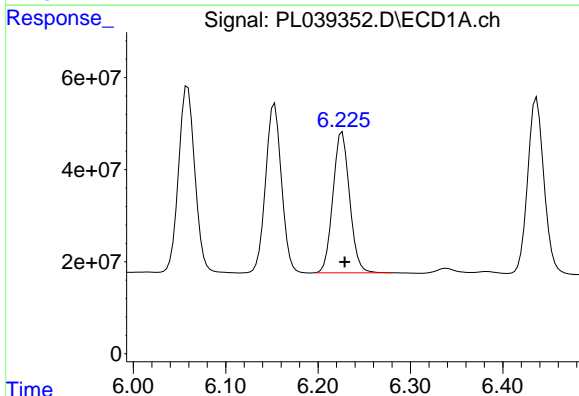
R.T.: 6.153 min  
Delta R.T.: -0.003 min  
Response: 438249371  
Conc: 57.81 ng/ml

Instrument :  
ECD\_L  
ClientSampled :



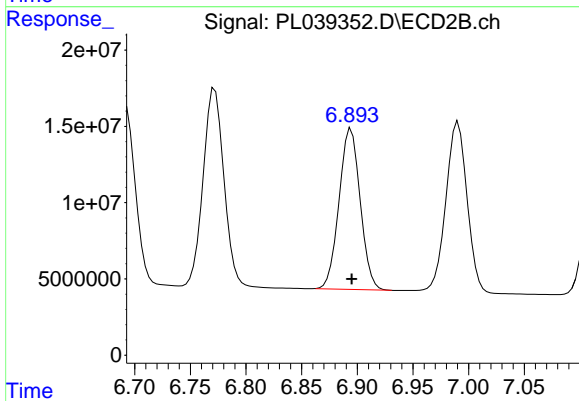
#17 4,4'-DDT

R.T.: 6.991 min  
Delta R.T.: 0.000 min  
Response: 146887343  
Conc: 62.40 ng/ml



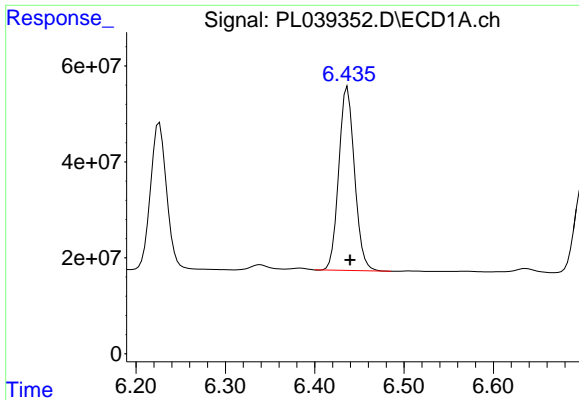
#18 Endrin aldehyde

R.T.: 6.226 min  
Delta R.T.: -0.003 min  
Response: 383262359  
Conc: 56.55 ng/ml



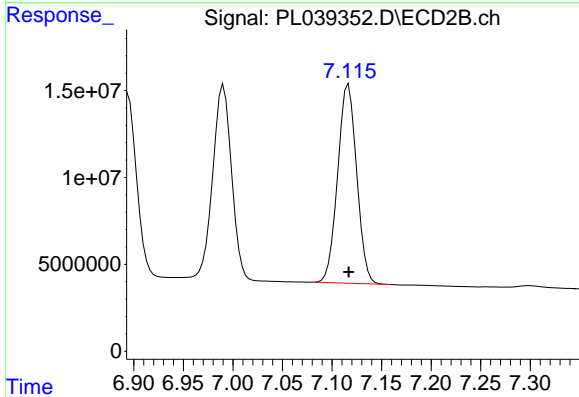
#18 Endrin aldehyde

R.T.: 6.894 min  
Delta R.T.: 0.000 min  
Response: 139177566  
Conc: 64.10 ng/ml

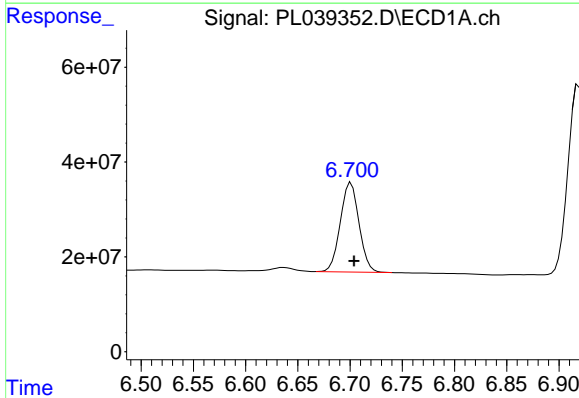


#19 Endosulfan Sulfate  
 R.T.: 6.437 min  
 Delta R.T.: -0.003 min  
 Response: 468591894  
 Conc: 57.59 ng/ml

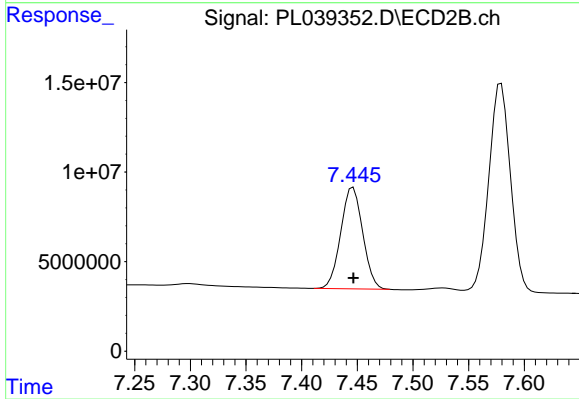
Instrument :  
 ECD\_L  
 ClientSampleId :



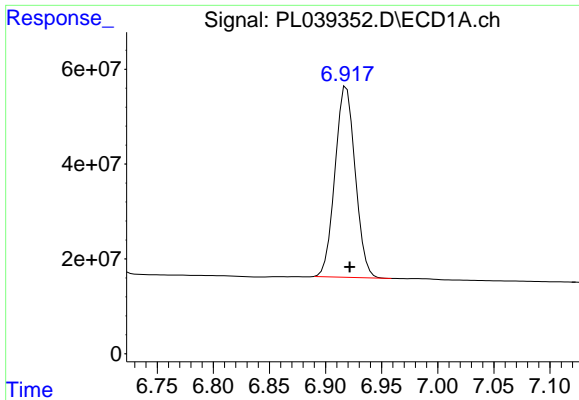
#19 Endosulfan Sulfate  
 R.T.: 7.117 min  
 Delta R.T.: 0.000 min  
 Response: 152744853  
 Conc: 63.71 ng/ml



#20 Methoxychlor  
 R.T.: 6.701 min  
 Delta R.T.: -0.003 min  
 Response: 234909253  
 Conc: 57.40 ng/ml



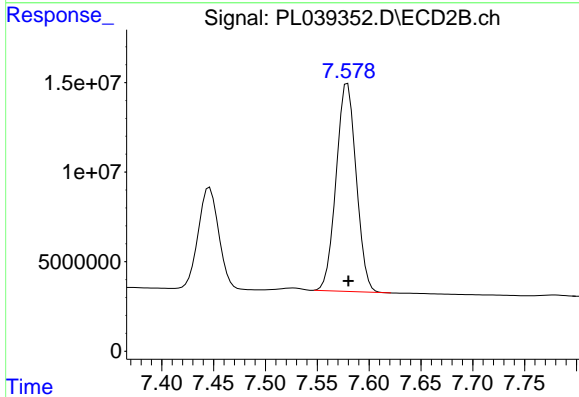
#20 Methoxychlor  
 R.T.: 7.446 min  
 Delta R.T.: 0.000 min  
 Response: 77668903  
 Conc: 62.71 ng/ml



#21 Endrin ketone

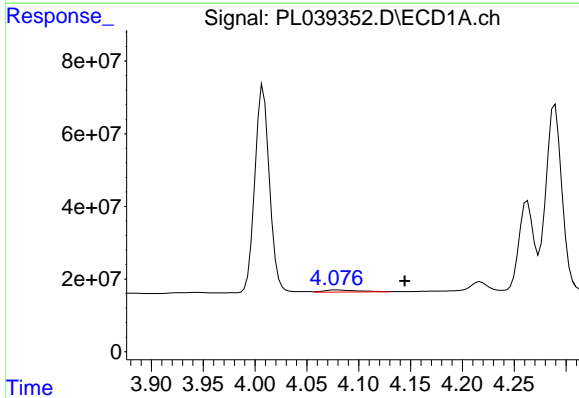
R.T.: 6.919 min  
 Delta R.T.: -0.003 min  
 Response: 503945244  
 Conc: 58.55 ng/ml

Instrument :  
 ECD\_L  
 ClientSampleId :



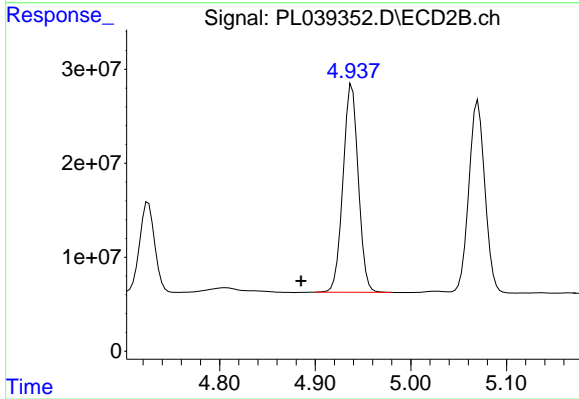
#21 Endrin ketone

R.T.: 7.579 min  
 Delta R.T.: 0.000 min  
 Response: 156353032  
 Conc: 63.28 ng/ml



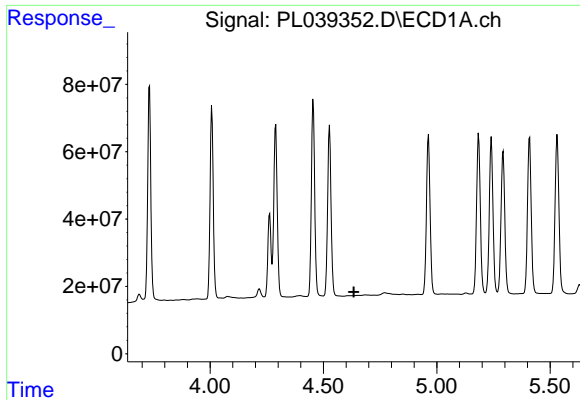
#23 Chlordane-1

R.T.: 4.078 min  
 Delta R.T.: -0.067 min  
 Response: 12992900  
 Conc: 41.04 ng/ml



#23 Chlordane-1

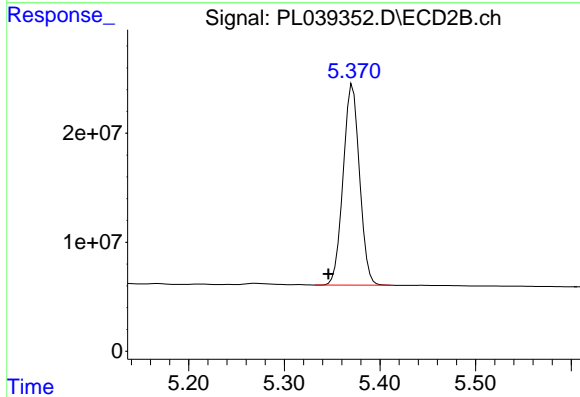
R.T.: 4.938 min  
 Delta R.T.: 0.053 min  
 Response: 246909595  
 Conc: 1976.31 ng/ml



#24 Chlordane-2

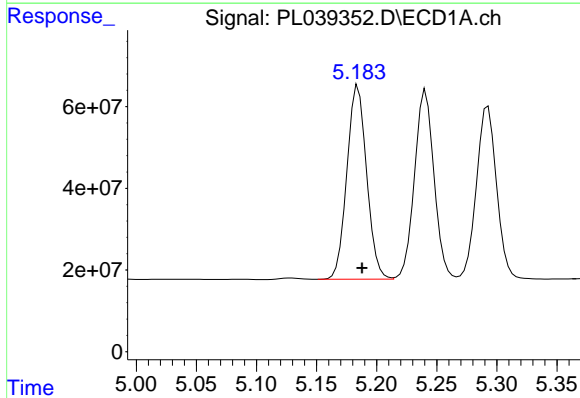
R.T.: 0.000 min  
 Exp R.T.: 4.635 min  
 Response: 0  
 Conc: N.D.

Instrument :  
 ECD\_L  
 ClientSampled :



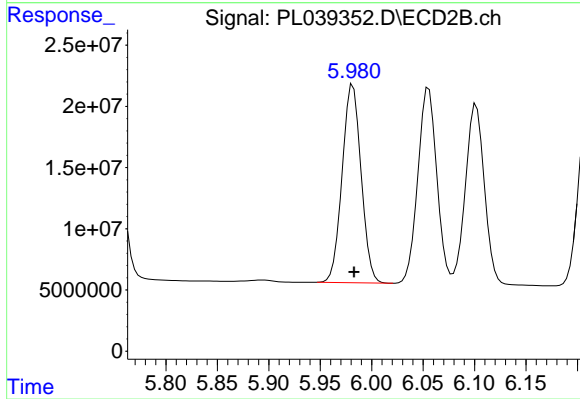
#24 Chlordane-2

R.T.: 5.371 min  
 Delta R.T.: 0.025 min  
 Response: 220134294  
 Conc: 1737.93 ng/ml



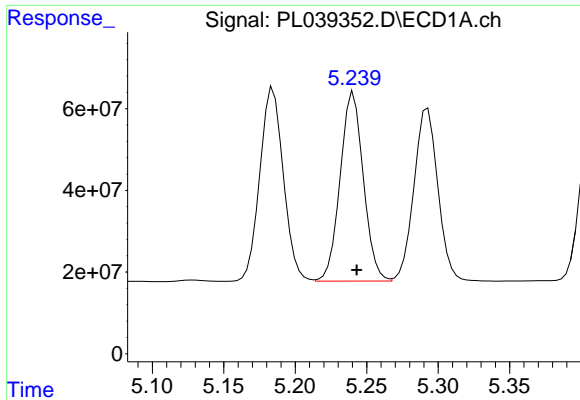
#25 Chlordane-3

R.T.: 5.185 min  
 Delta R.T.: -0.003 min  
 Response: 542879677  
 Conc: 497.02 ng/ml



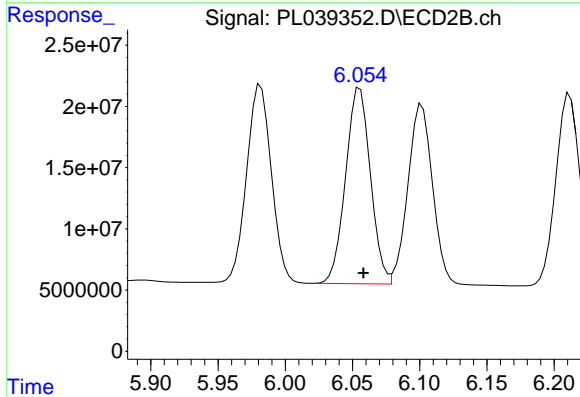
#25 Chlordane-3

R.T.: 5.982 min  
 Delta R.T.: -0.001 min  
 Response: 207625583  
 Conc: 482.44 ng/ml

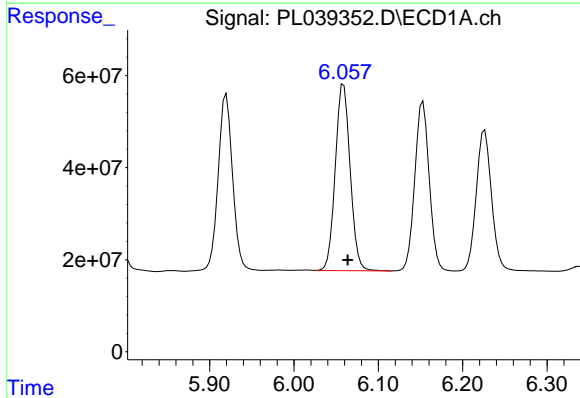


#26 Chlordane-4  
 R.T.: 5.241 min  
 Delta R.T.: -0.002 min  
 Response: 523166074  
 Conc: 523.51 ng/ml

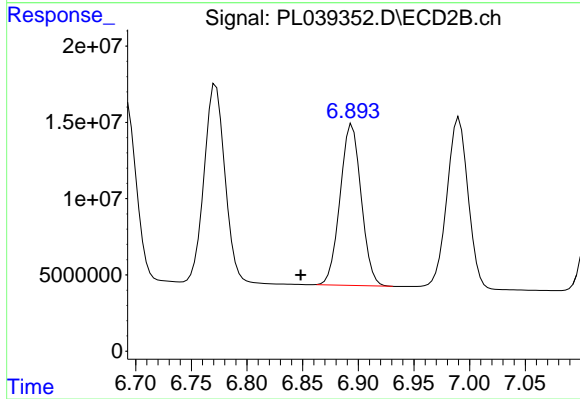
Instrument :  
 ECD\_L  
 ClientSampled :



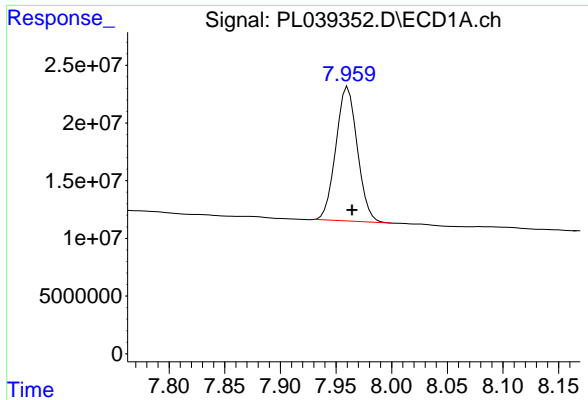
#26 Chlordane-4  
 R.T.: 6.056 min  
 Delta R.T.: -0.003 min  
 Response: 205642033  
 Conc: 396.44 ng/ml



#27 Chlordane-5  
 R.T.: 6.059 min  
 Delta R.T.: -0.005 min  
 Response: 497243765  
 Conc: 1533.14 ng/ml



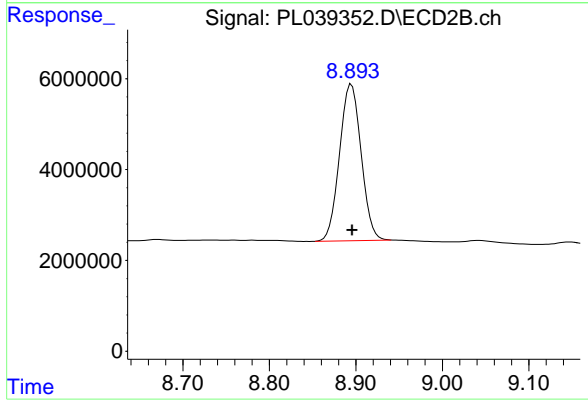
#27 Chlordane-5  
 R.T.: 6.894 min  
 Delta R.T.: 0.046 min  
 Response: 139177566  
 Conc: 1504.56 ng/ml



#28 Decachlorobiphenyl

R.T.: 7.961 min  
Delta R.T.: -0.004 min  
Response: 155748399  
Conc: 22.18 ng/ml

Instrument :  
ECD\_L  
ClientSampleId :



#28 Decachlorobiphenyl

R.T.: 8.895 min  
Delta R.T.: 0.000 min  
Response: 59590857  
Conc: 25.68 ng/ml