

Data Path : Z:\pestpcbsrv\HPCHEM1\ECD\_L\Data\PL082118\  
 Data File : PL039391.D  
 Signal(s) : Signal #1: ECD1A.ch Signal #2: ECD2B.ch  
 Acq On : 22 Aug 2018 02:47  
 Operator : AJ\SJ  
 Sample : J4553-02  
 Misc :  
 ALS Vial : 45 Sample Multiplier: 1

Instrument :  
 ECD\_L  
 ClientSampleId :

Integration File signal 1: autoint1.e  
 Integration File signal 2: autoint2.e  
 Quant Time: Aug 22 05:32:35 2018  
 Quant Method : Z:\pestpcbsrv\HPCHEM1\ECD\_L\methods\PL081318.M  
 Quant Title : GC Extractables  
 QLast Update : Wed Aug 15 15:04:22 2018  
 Response via : Initial Calibration  
 Integrator: ChemStation

Volume Inj. : 2 µl  
 Signal #1 Phase : ZB-MR1 Signal #2 Phase: ZB-MR2  
 Signal #1 Info : 30M x 0.32mm x0.5 Signal #2 Info : 30M x 0.32mm x0.25µm

| Compound                    | RT#1   | RT#2  | Resp#1   | Resp#2   | ng/ml  | ng/ml    |
|-----------------------------|--------|-------|----------|----------|--------|----------|
| -----                       |        |       |          |          |        |          |
| System Monitoring Compounds |        |       |          |          |        |          |
| 1) SA Tetrachlo...          | 3.304  | 3.907 | 137.6E6  | 57910419 | 19.684 | 21.601   |
| 28) SA Decachlor...         | 7.962  | 8.896 | 101.3E6  | 42138368 | 14.430 | 18.158 # |
| Target Compounds            |        |       |          |          |        |          |
| 4) MA Heptachlor            | 4.223f | 0.000 | 10705787 | 0        | 1.017  | N.D. #   |
| 6) B beta-BHC               | 4.223f | 0.000 | 10705787 | 0        | 2.305  | N.D. #   |
| 8) B Heptachlo...           | 4.919f | 0.000 | 5224823  | 0        | 0.547  | N.D. #   |
| 23) Chlordane-1             | 4.164  | 0.000 | 4870413  | 0        | 15.384 | N.D. #   |
| -----                       |        |       |          |          |        |          |

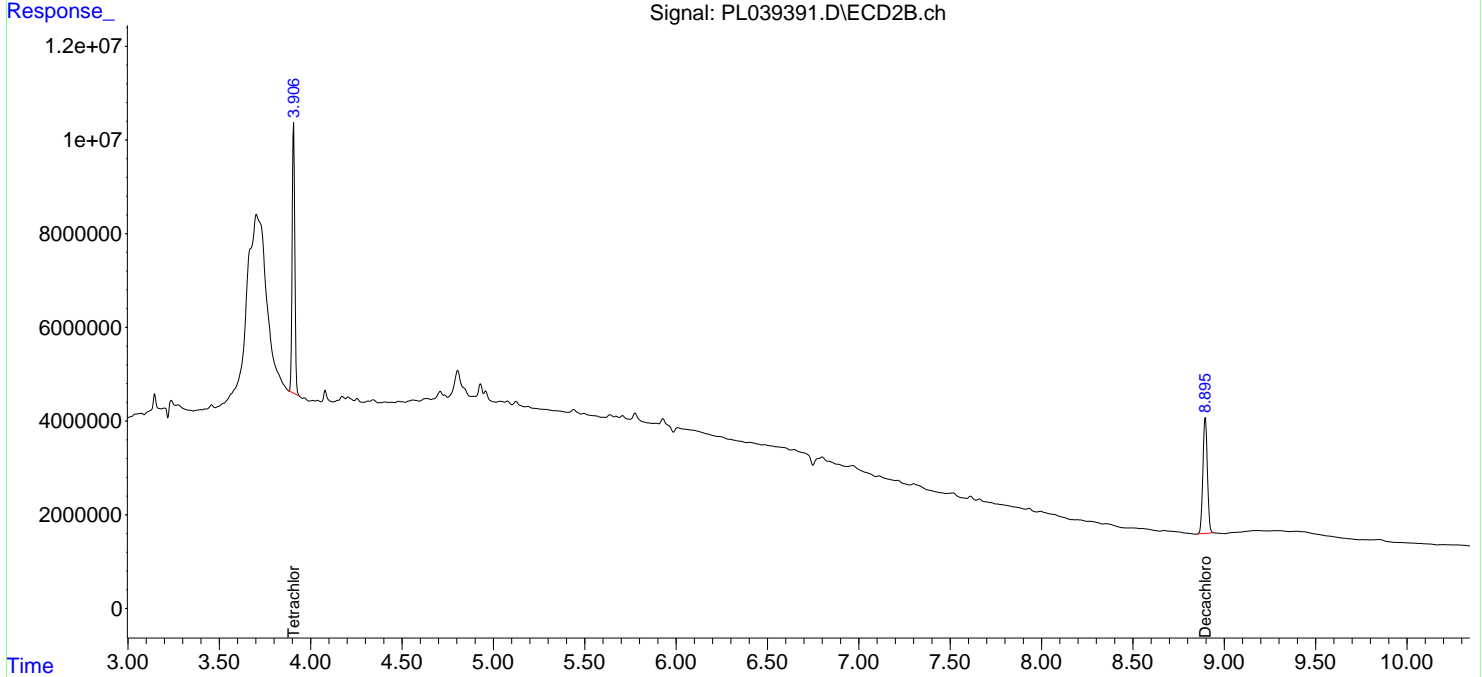
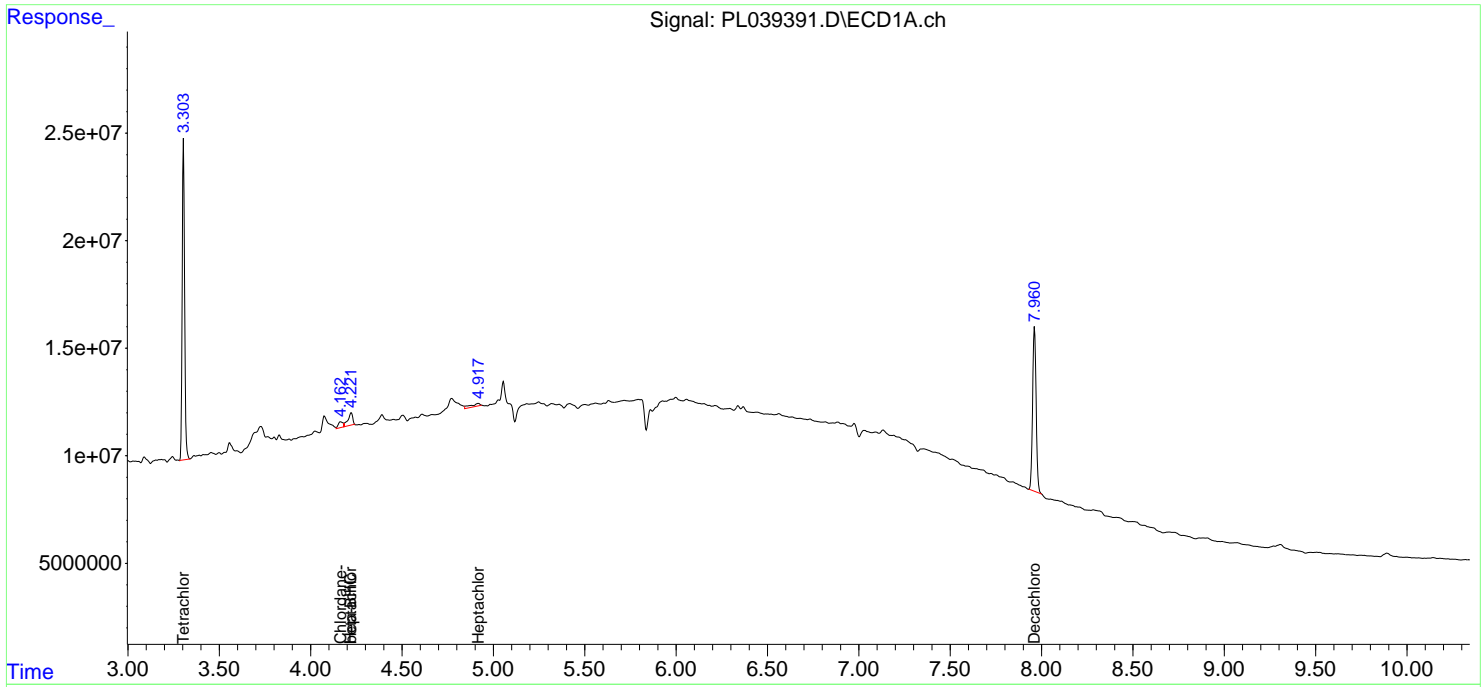
(f)=RT Delta > 1/2 Window (#)=Amounts differ by > 25% (m)=manual int.

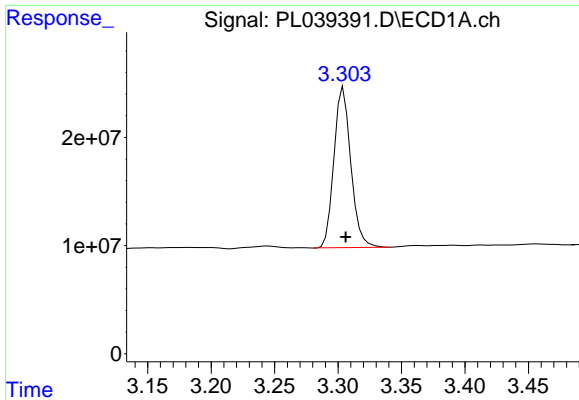
Data Path : Z:\pestpcbsrv\HPCHEM1\ECD\_L\Data\PL082118\  
 Data File : PL039391.D  
 Signal(s) : Signal #1: ECD1A.ch Signal #2: ECD2B.ch  
 Acq On : 22 Aug 2018 02:47  
 Operator : AJ\SJ  
 Sample : J4553-02  
 Misc :  
 ALS Vial : 45 Sample Multiplier: 1

Instrument :  
 ECD\_L  
 ClientSampled :

Integration File signal 1: autoint1.e  
 Integration File signal 2: autoint2.e  
 Quant Time: Aug 22 05:32:35 2018  
 Quant Method : Z:\pestpcbsrv\HPCHEM1\ECD\_L\methods\PL081318.M  
 Quant Title : GC Extractables  
 QLast Update : Wed Aug 15 15:04:22 2018  
 Response via : Initial Calibration  
 Integrator: ChemStation

Volume Inj. : 2 µl  
 Signal #1 Phase : ZB-MR1 Signal #2 Phase: ZB-MR2  
 Signal #1 Info : 30M x 0.32mm x0.5 Signal #2 Info : 30M x 0.32mm x0.25µm

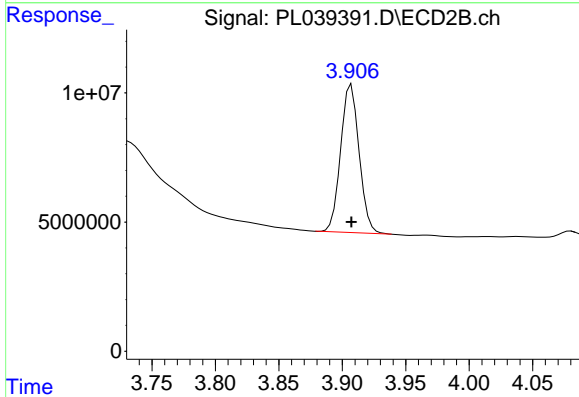




#1 Tetrachloro-m-xylene

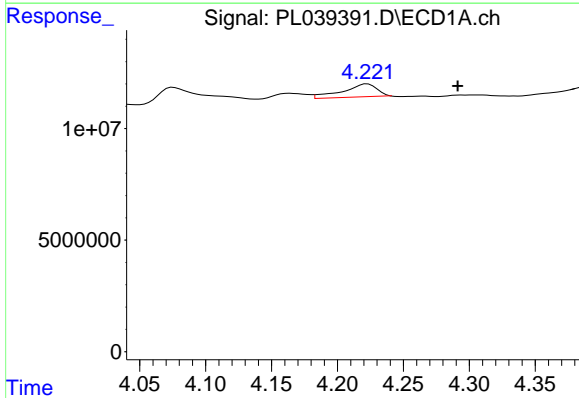
R.T.: 3.304 min  
 Delta R.T.: -0.002 min  
 Response: 137601632  
 Conc: 19.68 ng/ml

Instrument :  
 ECD\_L  
 ClientSampled :



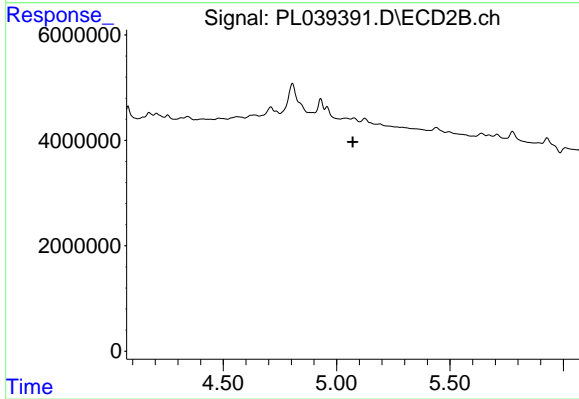
#1 Tetrachloro-m-xylene

R.T.: 3.907 min  
 Delta R.T.: 0.000 min  
 Response: 57910419  
 Conc: 21.60 ng/ml



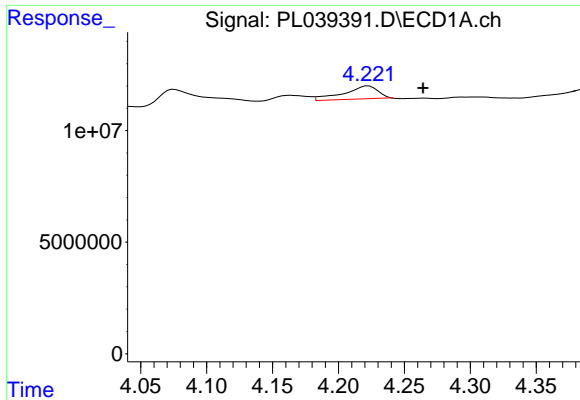
#4 Heptachlor

R.T.: 4.223 min  
 Delta R.T.: -0.069 min  
 Response: 10705787  
 Conc: 1.02 ng/ml



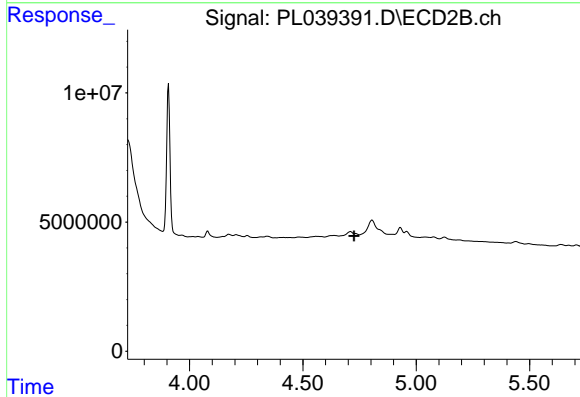
#4 Heptachlor

R.T.: 0.000 min  
 Exp R.T.: 5.071 min  
 Response: 0  
 Conc: N.D.

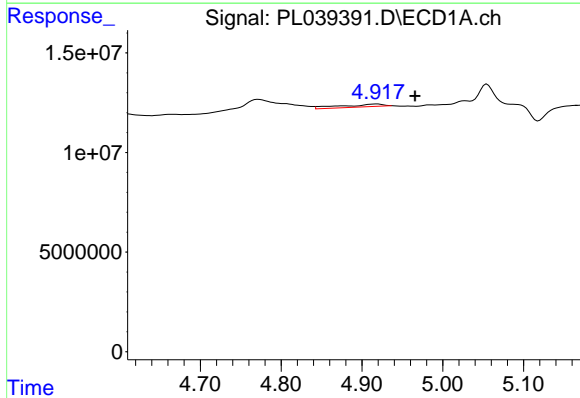


#6 beta-BHC  
 R.T.: 4.223 min  
 Delta R.T.: -0.041 min  
 Response: 10705787  
 Conc: 2.30 ng/ml

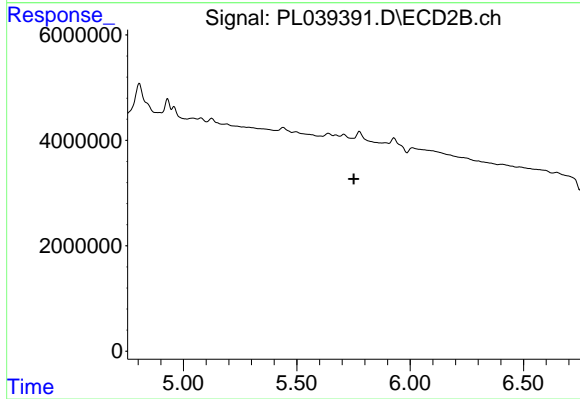
Instrument :  
 ECD\_L  
 ClientSampled :



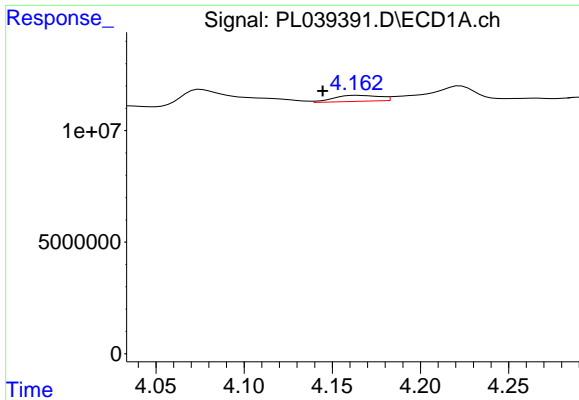
#6 beta-BHC  
 R.T.: 0.000 min  
 Exp R.T. : 4.726 min  
 Response: 0  
 Conc: N.D.



#8 Heptachlor epoxide  
 R.T.: 4.919 min  
 Delta R.T.: -0.047 min  
 Response: 5224823  
 Conc: 0.55 ng/ml

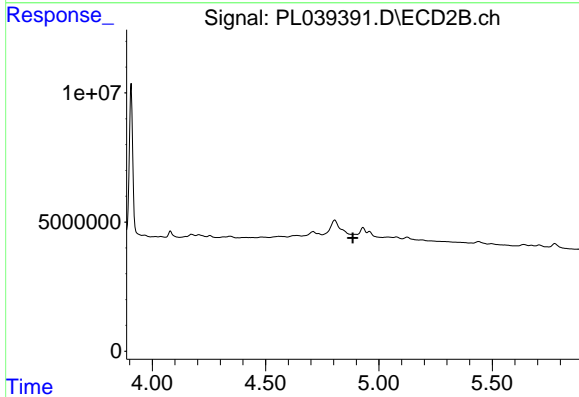


#8 Heptachlor epoxide  
 R.T.: 0.000 min  
 Exp R.T. : 5.751 min  
 Response: 0  
 Conc: N.D.

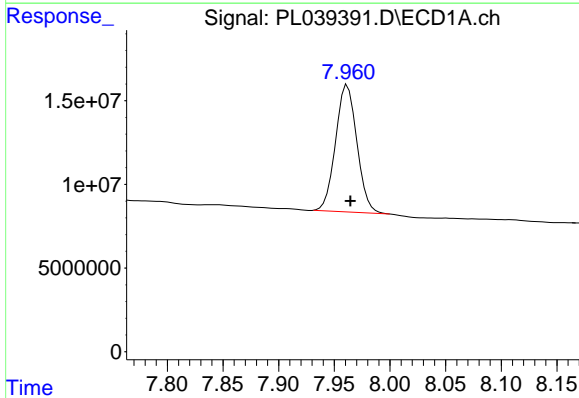


#23 Chlordane-1  
 R.T.: 4.164 min  
 Delta R.T.: 0.019 min  
 Response: 4870413  
 Conc: 15.38 ng/ml

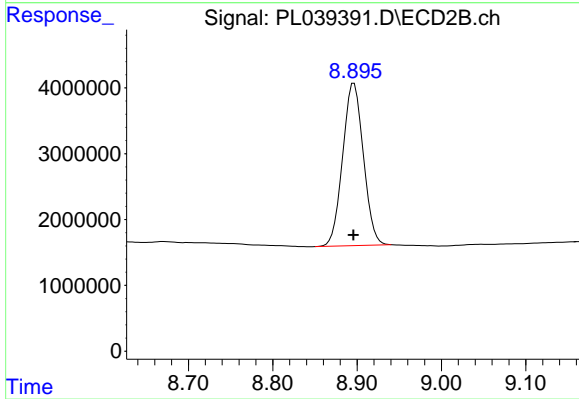
Instrument :  
 ECD\_L  
 ClientSampleId :



#23 Chlordane-1  
 R.T.: 0.000 min  
 Exp R.T. : 4.885 min  
 Response: 0  
 Conc: N.D.



#28 Decachlorobiphenyl  
 R.T.: 7.962 min  
 Delta R.T.: -0.003 min  
 Response: 101346654  
 Conc: 14.43 ng/ml



#28 Decachlorobiphenyl  
 R.T.: 8.896 min  
 Delta R.T.: 0.000 min  
 Response: 42138368  
 Conc: 18.16 ng/ml