

Data Path : Z:\pestpcbsrv\HPCHEM1\ECD_L\Data\PL08120\
 Data File : PL060925.D
 Signal(s) : Signal #1: ECD1A.ch Signal #2: ECD2B.ch
 Acq On : 21 Aug 2020 20:03
 Operator : DD\AJ
 Sample : PSTDCCC050
 Misc :
 ALS Vial : 4 Sample Multiplier: 1

Instrument :
 ECD_L
 ClientSampleId :
 PSTDCCC050

Integration File signal 1: autoint1.e
 Integration File signal 2: autoint2.e
 Quant Time: Aug 24 02:34:12 2020
 Quant Method : Z:\pestpcbsrv\HPCHEM1\ECD_L\methods\PL081820.M
 Quant Title : GC Extractables
 QLast Update : Wed Aug 19 06:13:38 2020
 Response via : Initial Calibration
 Integrator: ChemStation

Volume Inj. : 1 µl
 Signal #1 Phase : ZB-MR2 Signal #2 Phase: ZB-MR1
 Signal #1 Info : 30M x 0.32mm x0.2 Signal #2 Info : 30M x 0.32mm x0.5µm

Compound	RT#1	RT#2	Resp#1	Resp#2	ng/ml	ng/ml

System Monitoring Compounds						
1) SA Tetrachlo...	3.462	4.011	88217041	127.2E6	52.843	45.727
28) SA Decachlor...	8.217	9.099	74064244	100.2E6	51.850	49.590
Target Compounds						
2) A alpha-BHC	3.899	4.400	133.1E6	196.6E6	54.669	46.287
3) MA gamma-BHC...	4.182	4.686	118.9E6	182.2E6	54.793	46.225
4) MA Heptachlor	4.484	5.197	108.0E6	175.6E6	54.408	46.723
5) MB Aldrin	4.732	5.503	96722223	162.7E6	55.459	47.192
6) B beta-BHC	4.433	4.856	48709109	75771380	54.218	46.896
7) B delta-BHC	4.637	5.074	112.4E6	154.4E6	55.272	52.429
8) B Heptachlo...	5.175	5.890	92327069	150.6E6	54.770	53.879
9) A Endosulfan I	5.513	6.248	85586126	138.1E6	55.444	46.675
10) B gamma-Chl...	5.402	6.125	91486701	151.3E6	55.566	49.563
11) B alpha-Chl...	5.460	6.198	91603368	149.4E6	55.605	47.400
12) B 4,4'-DDE	5.626	6.356	86502241	134.6E6	56.096	44.469
13) MA Dieldrin	5.756	6.506	89858784	138.5E6	55.900	44.990
14) MA Endrin	6.013	6.725	82456347	113.7E6	54.502	43.774
15) B Endosulfa...	6.286	6.934	82537384	117.4E6	54.735	44.994
16) A 4,4'-DDD	6.141	6.847	73238228	106.7E6	57.165	45.751
17) MA 4,4'-DDT	6.382	7.148	68649208	100.9E6	57.248	46.470
18) B Endrin al...	6.454	7.059	70645250	100.8E6	54.780	46.561
19) B Endosulfa...	6.668	7.283	78841248	110.9E6	54.359	46.755
20) A Methoxychlor	6.927	7.608	40818256	54915119	53.927	43.885
21) B Endrin ke...	7.157	7.754	87613175	113.4E6	56.405	49.205
22) Mirex	7.347	8.211	66862033	82267989	55.849	50.928
24) Chlordane-2	0.000	5.503f	0	162.7E6	N.D.	1510.319 #
25) Chlordane-3	5.402	6.125	91486701	151.3E6	654.849	375.263 #
26) Chlordane-4	5.460	6.198	91603368	149.4E6	799.958	303.187 #
27) Chlordane-5	6.286	0.000	82537384	0	1655.973	N.D. #

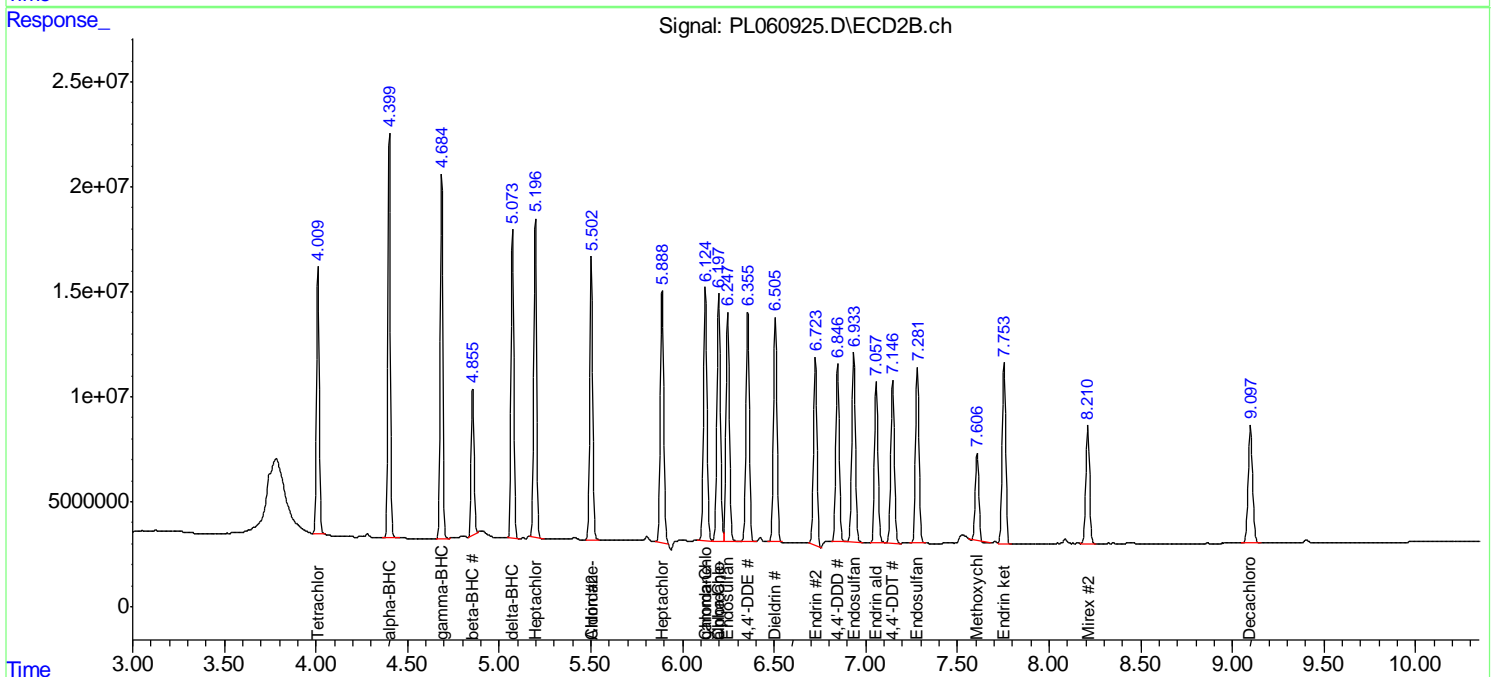
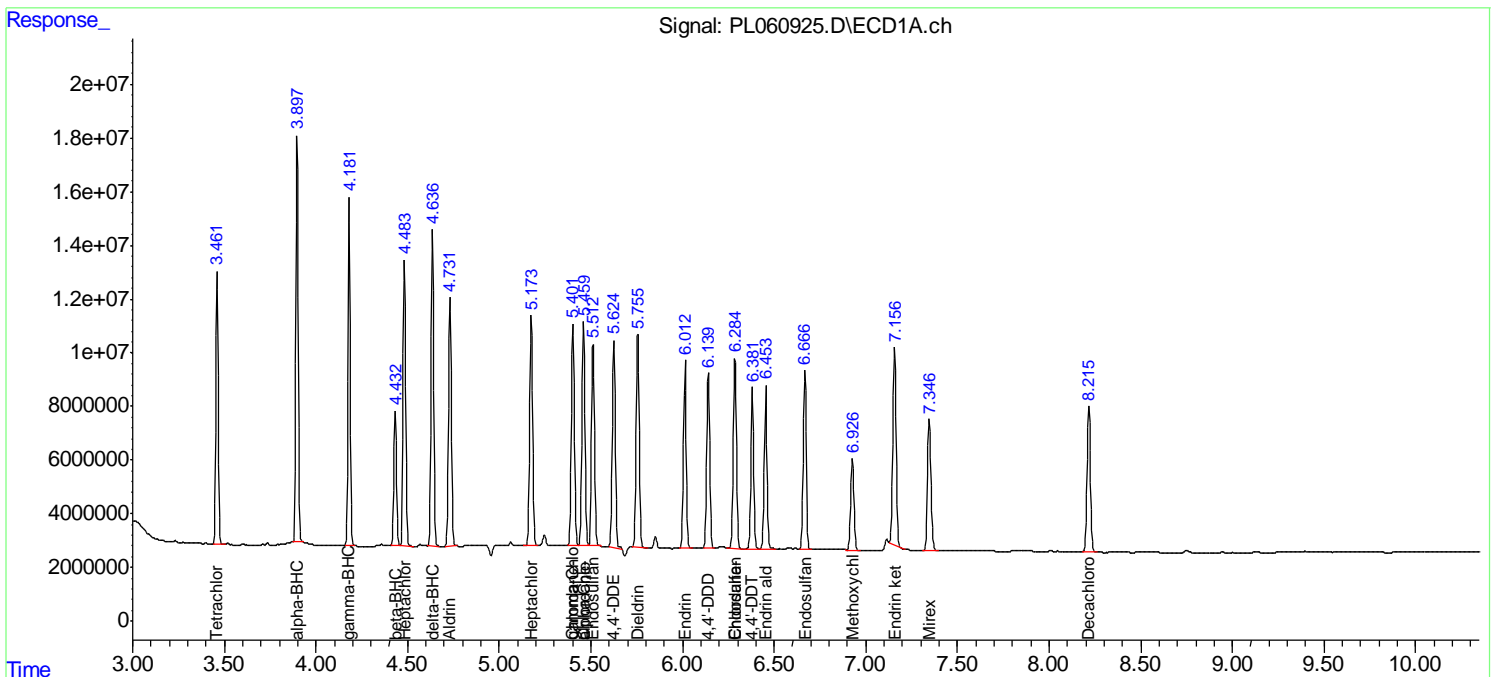
(f)=RT Delta > 1/2 Window (#)=Amounts differ by > 25% (m)=manual int.

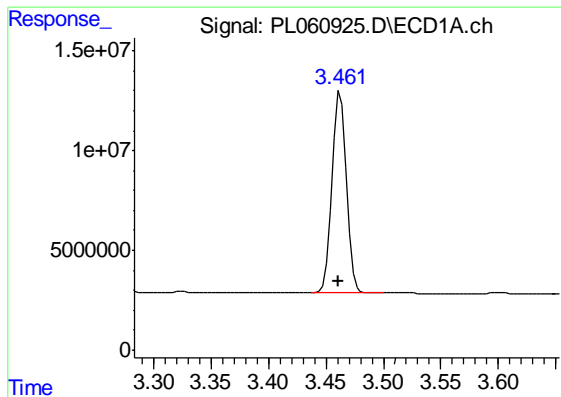
Data Path : Z:\pestpcbsrv\HPCHEM1\ECD_L\Data\PL082120\
 Data File : PL060925.D
 Signal(s) : Signal #1: ECD1A.ch Signal #2: ECD2B.ch
 Acq On : 21 Aug 2020 20:03
 Operator : DD\AJ
 Sample : PSTDCCC050
 Misc :
 ALS Vial : 4 Sample Multiplier: 1

Instrument :
 ECD_L
 ClientSampleId :
 PSTDCCC050

Integration File signal 1: autoint1.e
 Integration File signal 2: autoint2.e
 Quant Time: Aug 24 02:34:12 2020
 Quant Method : Z:\pestpcbsrv\HPCHEM1\ECD_L\methods\PL081820.M
 Quant Title : GC Extractables
 QLast Update : Wed Aug 19 06:13:38 2020
 Response via : Initial Calibration
 Integrator: ChemStation

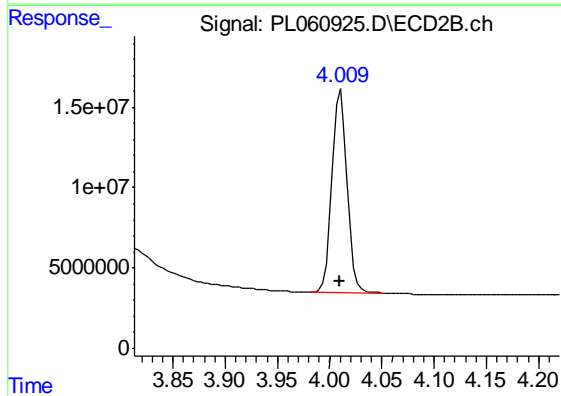
Volume Inj. : 1 µl
 Signal #1 Phase : ZB-MR2 Signal #2 Phase: ZB-MR1
 Signal #1 Info : 30M x 0.32mm x0.2 Signal #2 Info : 30M x 0.32mm x0.5µm



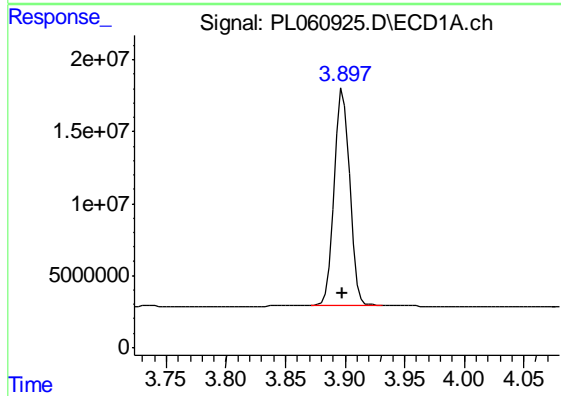


#1 Tetrachloro-m-xylene
 R.T.: 3.462 min
 Delta R.T.: 0.001 min
 Response: 88217041
 Conc: 52.84 ng/ml

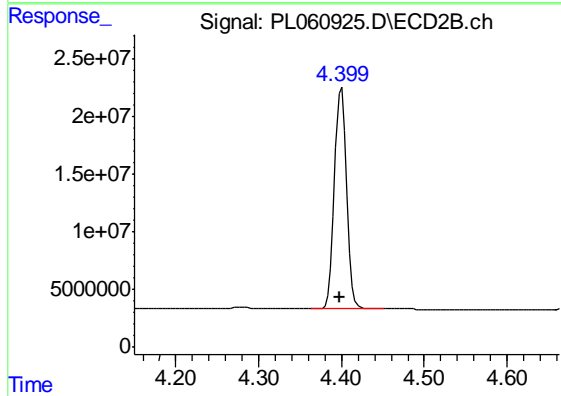
Instrument :
 ECD_L
 ClientSampleId :
 PSTDCCC050



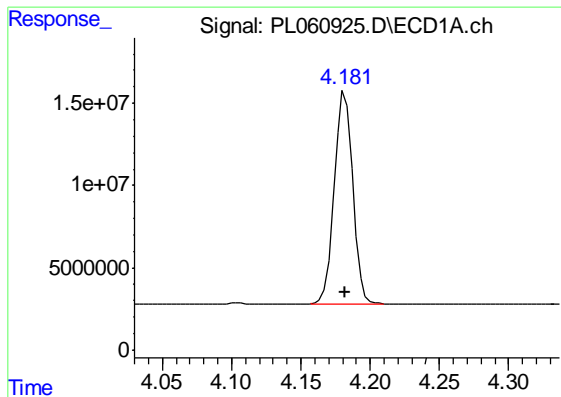
#1 Tetrachloro-m-xylene
 R.T.: 4.011 min
 Delta R.T.: 0.001 min
 Response: 127198110
 Conc: 45.73 ng/ml



#2 alpha-BHC
 R.T.: 3.899 min
 Delta R.T.: 0.000 min
 Response: 133130360
 Conc: 54.67 ng/ml



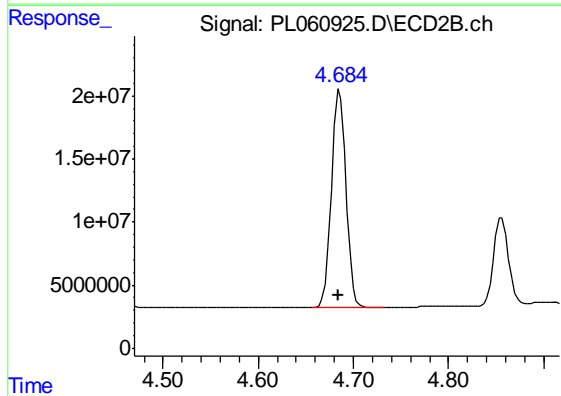
#2 alpha-BHC
 R.T.: 4.400 min
 Delta R.T.: 0.001 min
 Response: 196631638
 Conc: 46.29 ng/ml



#3 gamma-BHC (Lindane)

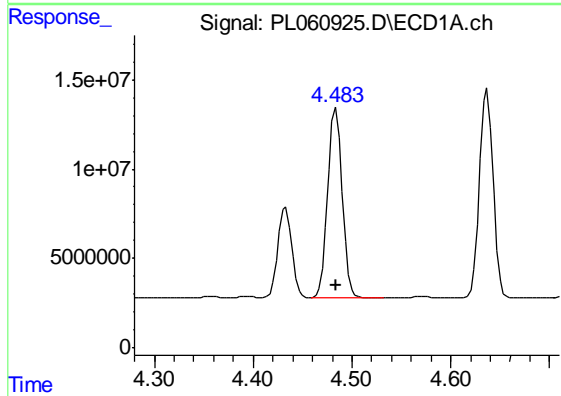
R.T.: 4.182 min
 Delta R.T.: 0.000 min
 Response: 118863901
 Conc: 54.79 ng/ml

Instrument :
 ECD_L
 ClientSampleId :
 PSTDCCC050



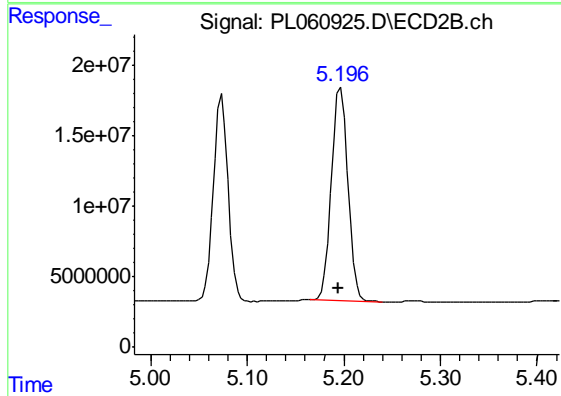
#3 gamma-BHC (Lindane)

R.T.: 4.686 min
 Delta R.T.: 0.001 min
 Response: 182212005
 Conc: 46.22 ng/ml



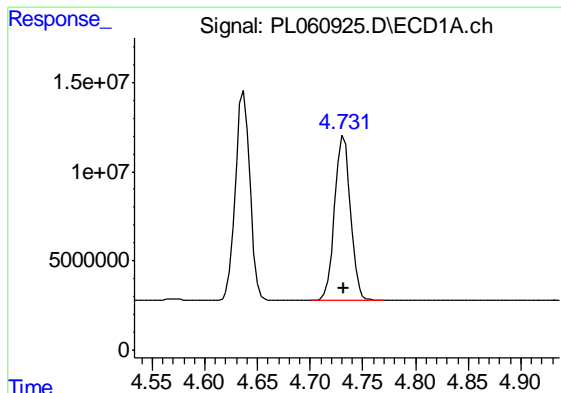
#4 Heptachlor

R.T.: 4.484 min
 Delta R.T.: 0.000 min
 Response: 107998691
 Conc: 54.41 ng/ml



#4 Heptachlor

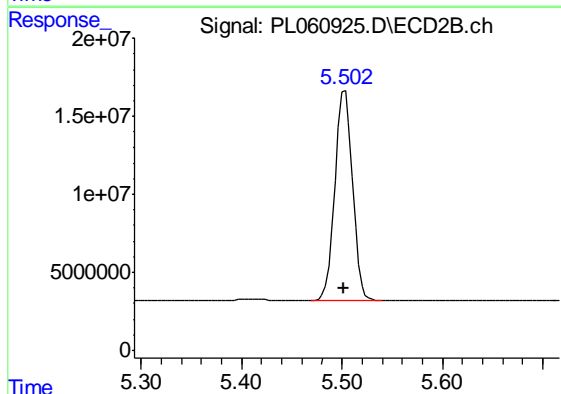
R.T.: 5.197 min
 Delta R.T.: 0.002 min
 Response: 175592253
 Conc: 46.72 ng/ml



#5 Aldrin

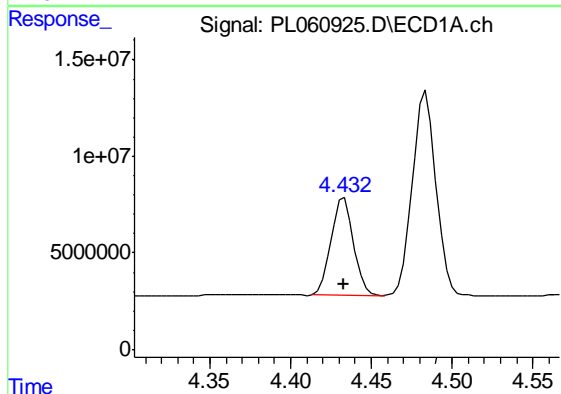
R.T.: 4.732 min
 Delta R.T.: 0.000 min
 Response: 96722223
 Conc: 55.46 ng/ml

Instrument :
 ECD_L
 ClientSampleId :
 PSTDCCC050



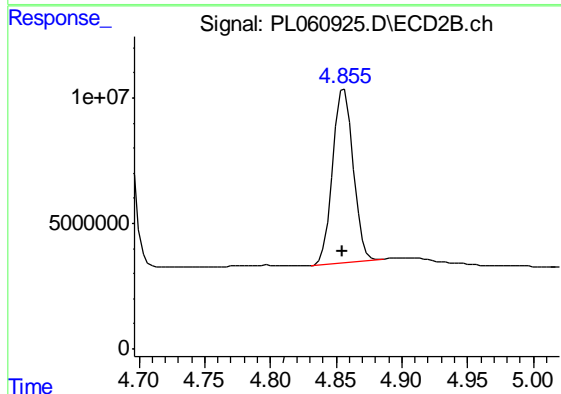
#5 Aldrin

R.T.: 5.503 min
 Delta R.T.: 0.002 min
 Response: 162658763
 Conc: 47.19 ng/ml



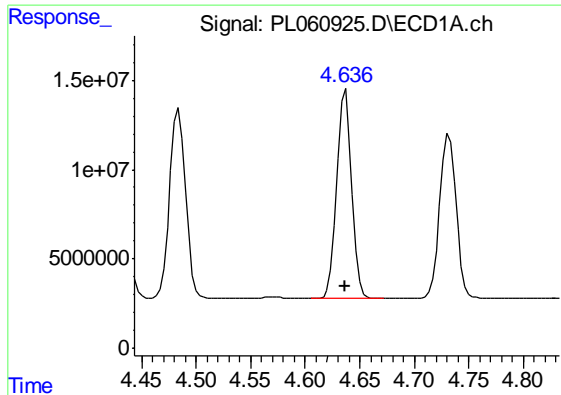
#6 beta-BHC

R.T.: 4.433 min
 Delta R.T.: 0.000 min
 Response: 48709109
 Conc: 54.22 ng/ml



#6 beta-BHC

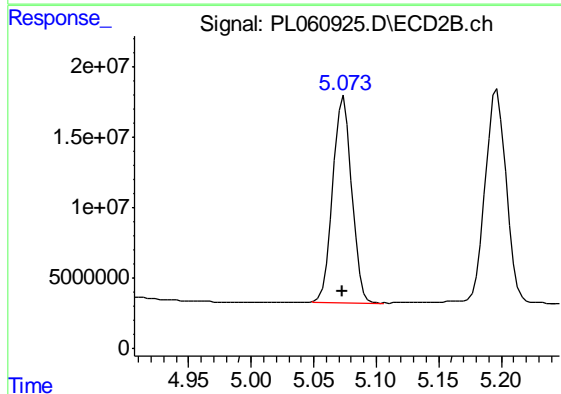
R.T.: 4.856 min
 Delta R.T.: 0.001 min
 Response: 75771380
 Conc: 46.90 ng/ml



#7 delta-BHC

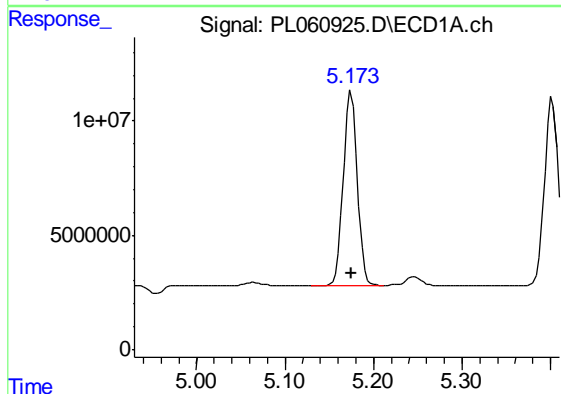
R.T.: 4.637 min
 Delta R.T.: 0.000 min
 Response: 112377057
 Conc: 55.27 ng/ml

Instrument :
 ECD_L
 ClientSampleId :
 PSTDCCC050



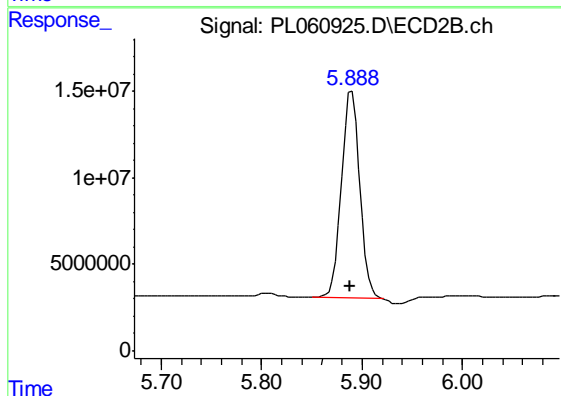
#7 delta-BHC

R.T.: 5.074 min
 Delta R.T.: 0.001 min
 Response: 154438246
 Conc: 52.43 ng/ml



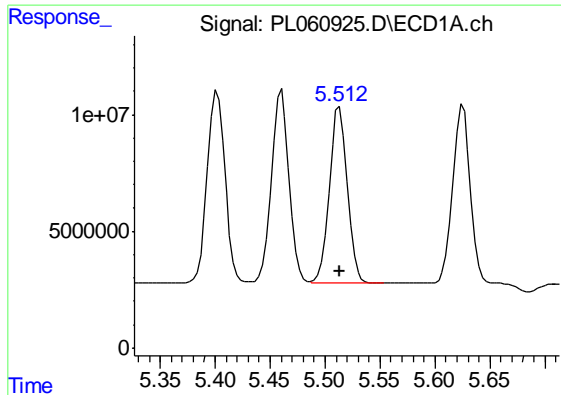
#8 Heptachlor epoxide

R.T.: 5.175 min
 Delta R.T.: 0.000 min
 Response: 92327069
 Conc: 54.77 ng/ml



#8 Heptachlor epoxide

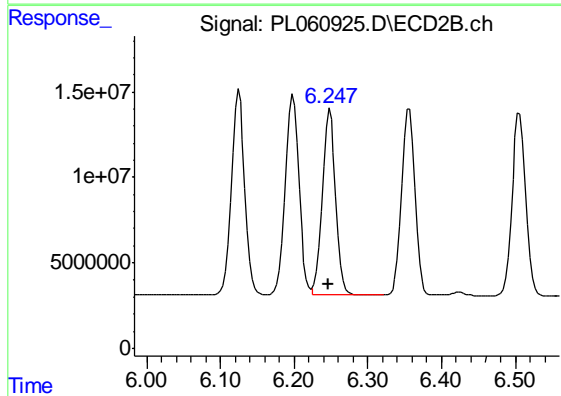
R.T.: 5.890 min
 Delta R.T.: 0.001 min
 Response: 150607999
 Conc: 53.88 ng/ml



#9 Endosulfan I

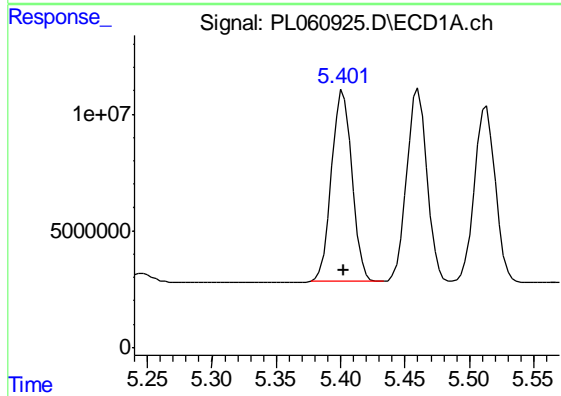
R.T.: 5.513 min
 Delta R.T.: 0.000 min
 Response: 85586126
 Conc: 55.44 ng/ml

Instrument :
 ECD_L
 ClientSampleId :
 PSTDCCC050



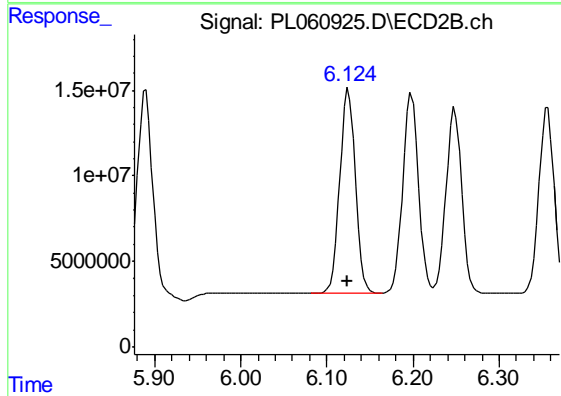
#9 Endosulfan I

R.T.: 6.248 min
 Delta R.T.: 0.001 min
 Response: 138086767
 Conc: 46.68 ng/ml



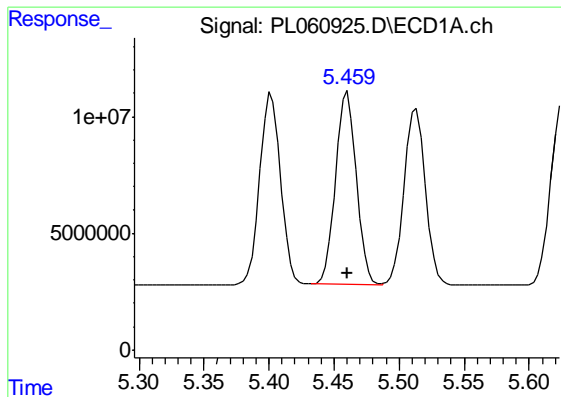
#10 gamma-Chlordane

R.T.: 5.402 min
 Delta R.T.: 0.000 min
 Response: 91486701
 Conc: 55.57 ng/ml



#10 gamma-Chlordane

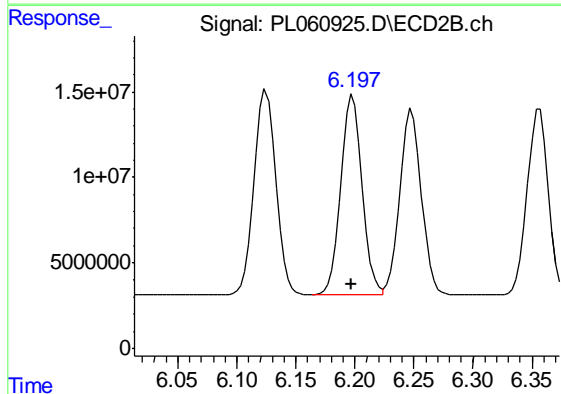
R.T.: 6.125 min
 Delta R.T.: 0.001 min
 Response: 151325588
 Conc: 49.56 ng/ml



#11 alpha-Chlordane

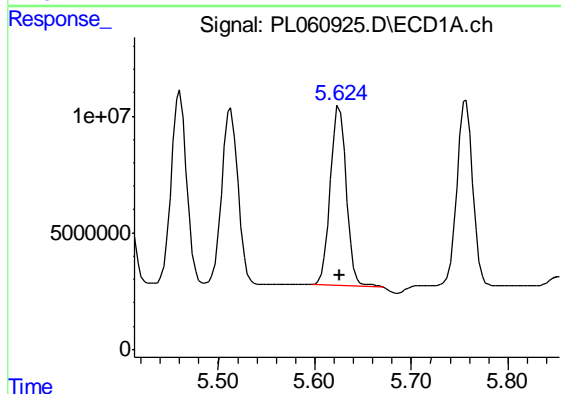
R.T.: 5.460 min
 Delta R.T.: 0.000 min
 Response: 91603368
 Conc: 55.61 ng/ml

Instrument :
 ECD_L
 ClientSampleId :
 PSTDCCC050



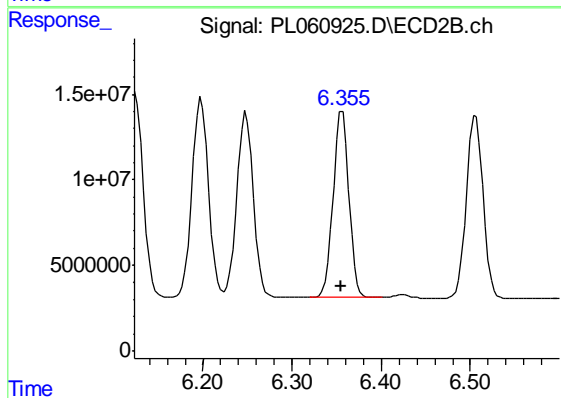
#11 alpha-Chlordane

R.T.: 6.198 min
 Delta R.T.: 0.001 min
 Response: 149414015
 Conc: 47.40 ng/ml



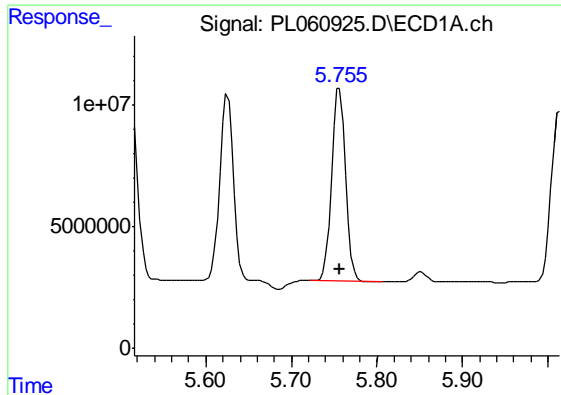
#12 4,4'-DDE

R.T.: 5.626 min
 Delta R.T.: 0.000 min
 Response: 86502241
 Conc: 56.10 ng/ml



#12 4,4'-DDE

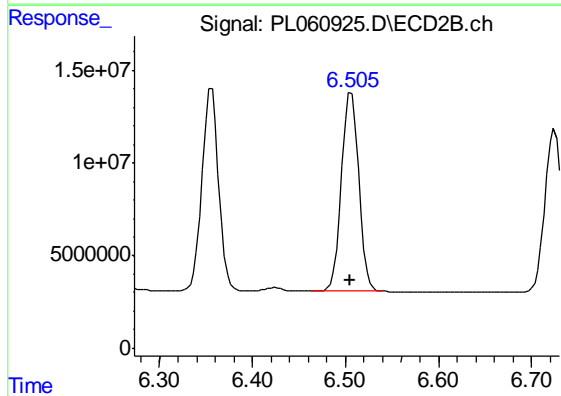
R.T.: 6.356 min
 Delta R.T.: 0.002 min
 Response: 134624036
 Conc: 44.47 ng/ml



#13 Dieldrin

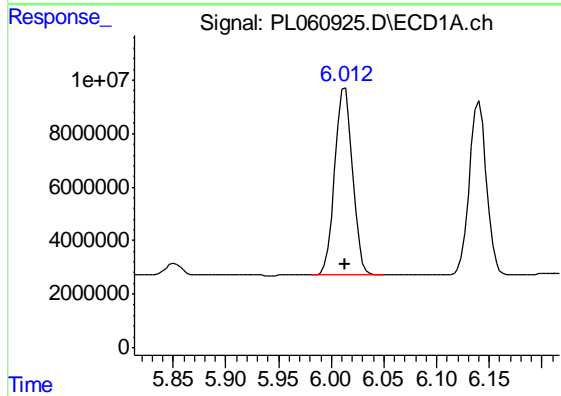
R.T.: 5.756 min
 Delta R.T.: 0.000 min
 Response: 89858784
 Conc: 55.90 ng/ml

Instrument :
 ECD_L
 ClientSampleId :
 PSTDCCC050



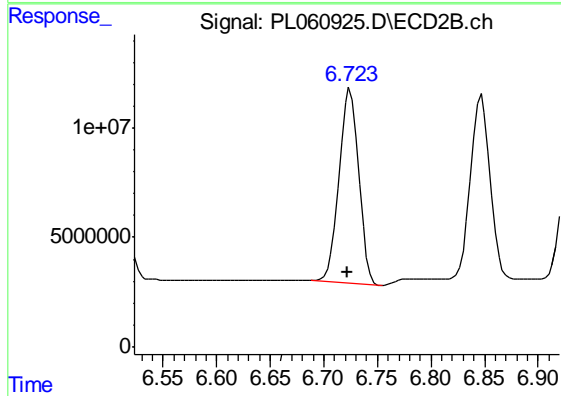
#13 Dieldrin

R.T.: 6.506 min
 Delta R.T.: 0.002 min
 Response: 138459948
 Conc: 44.99 ng/ml



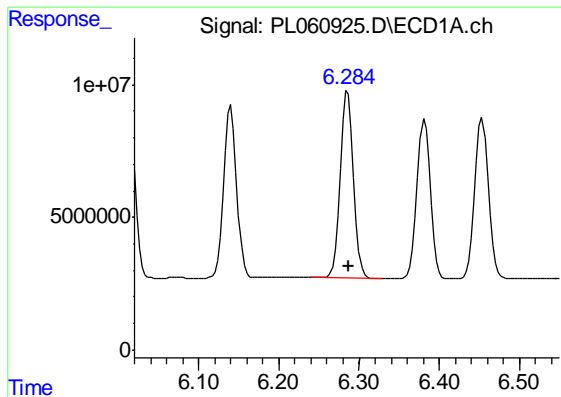
#14 Endrin

R.T.: 6.013 min
 Delta R.T.: 0.000 min
 Response: 82456347
 Conc: 54.50 ng/ml



#14 Endrin

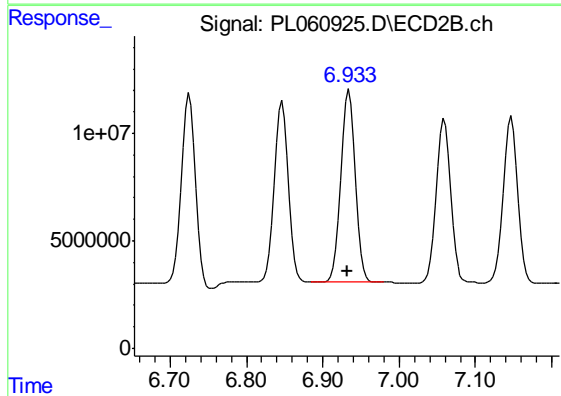
R.T.: 6.725 min
 Delta R.T.: 0.002 min
 Response: 113732039
 Conc: 43.77 ng/ml



#15 Endosulfan II

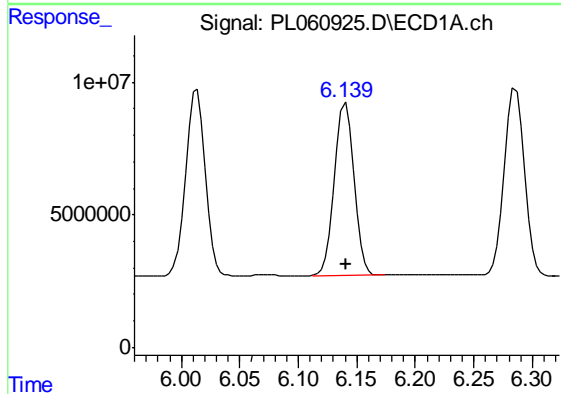
R.T.: 6.286 min
 Delta R.T.: 0.000 min
 Response: 82537384
 Conc: 54.73 ng/ml

Instrument :
 ECD_L
 ClientSampleId :
 PSTDCCC050



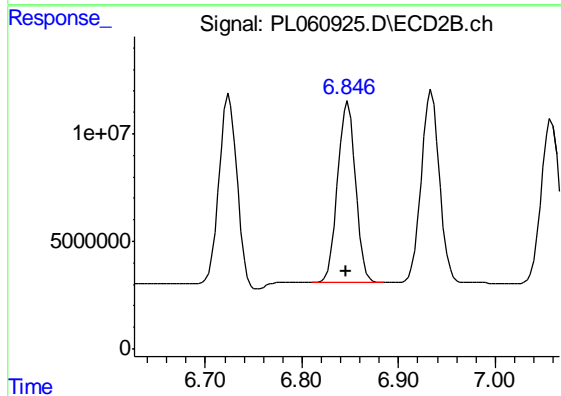
#15 Endosulfan II

R.T.: 6.934 min
 Delta R.T.: 0.002 min
 Response: 117367993
 Conc: 44.99 ng/ml



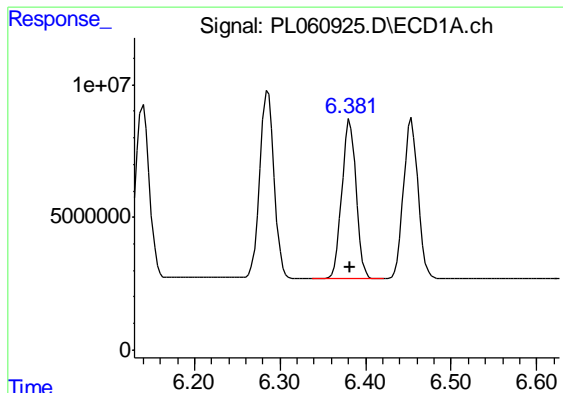
#16 4,4'-DDD

R.T.: 6.141 min
 Delta R.T.: 0.000 min
 Response: 73238228
 Conc: 57.17 ng/ml



#16 4,4'-DDD

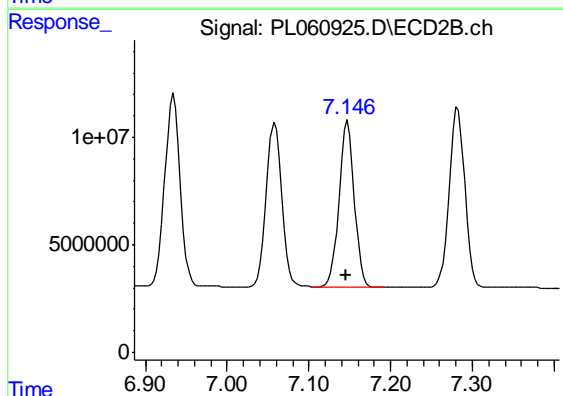
R.T.: 6.847 min
 Delta R.T.: 0.002 min
 Response: 106706252
 Conc: 45.75 ng/ml



#17 4,4'-DDT

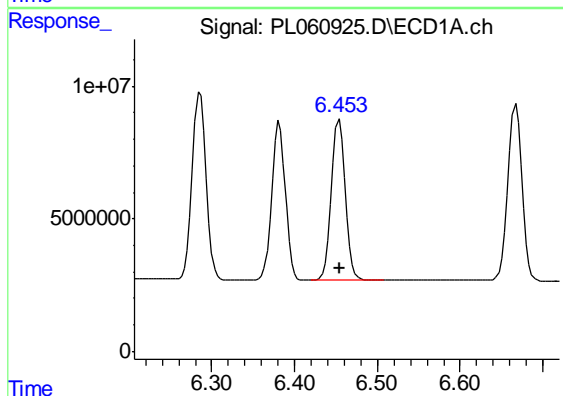
R.T.: 6.382 min
 Delta R.T.: 0.000 min
 Response: 68649208
 Conc: 57.25 ng/ml

Instrument :
 ECD_L
 ClientSampleId :
 PSTDCCC050



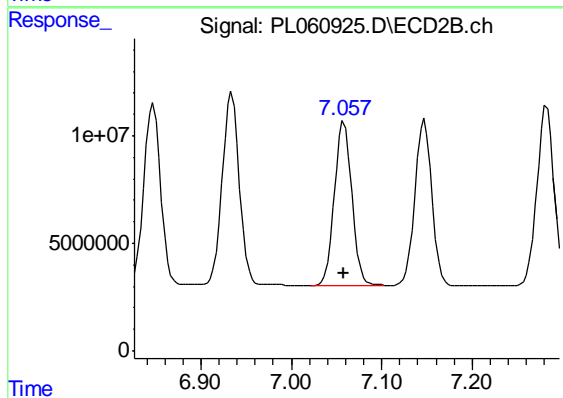
#17 4,4'-DDT

R.T.: 7.148 min
 Delta R.T.: 0.002 min
 Response: 100853522
 Conc: 46.47 ng/ml



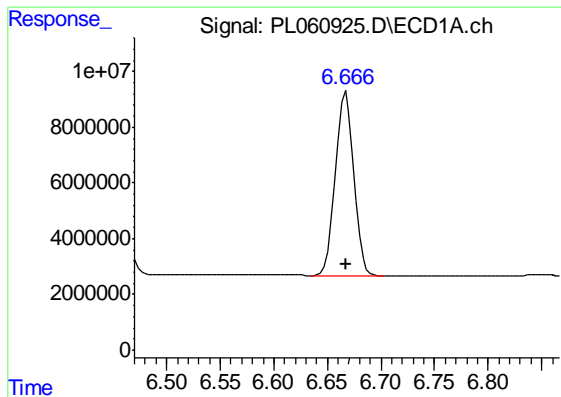
#18 Endrin aldehyde

R.T.: 6.454 min
 Delta R.T.: 0.000 min
 Response: 70645250
 Conc: 54.78 ng/ml



#18 Endrin aldehyde

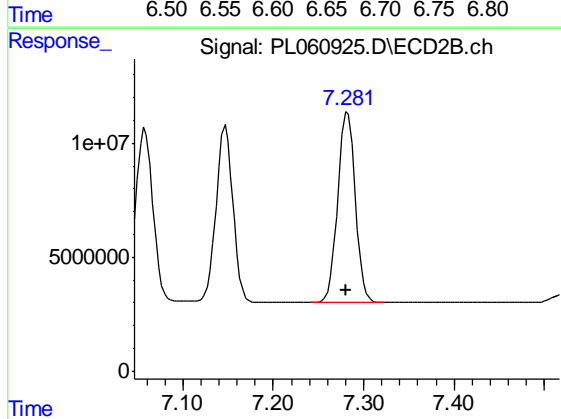
R.T.: 7.059 min
 Delta R.T.: 0.000 min
 Response: 100761138
 Conc: 46.56 ng/ml



#19 Endosulfan Sulfate

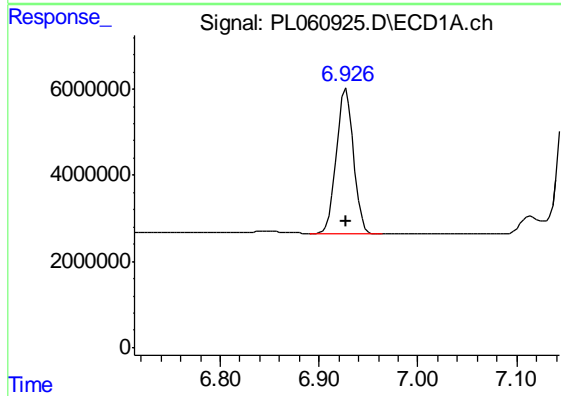
R.T.: 6.668 min
 Delta R.T.: 0.000 min
 Response: 78841248
 Conc: 54.36 ng/ml

Instrument :
 ECD_L
 ClientSampleId :
 PSTDCCC050



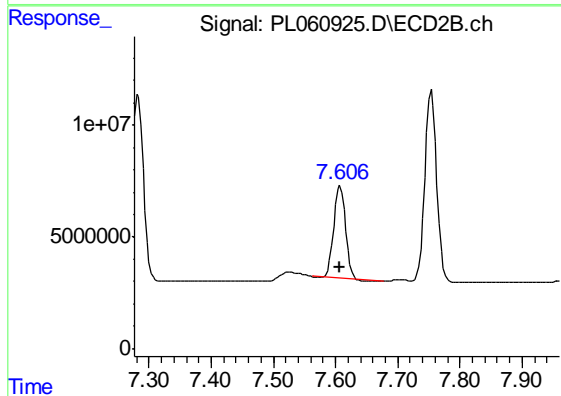
#19 Endosulfan Sulfate

R.T.: 7.283 min
 Delta R.T.: 0.001 min
 Response: 110929324
 Conc: 46.75 ng/ml



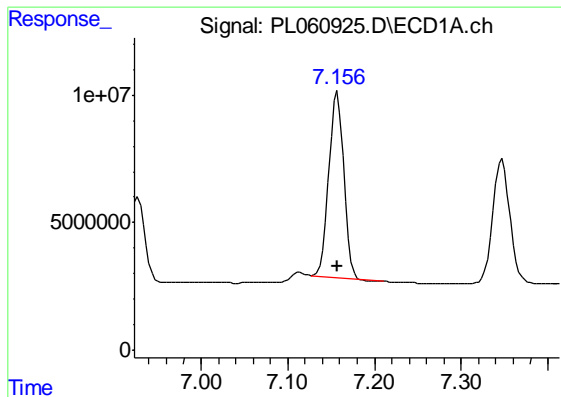
#20 Methoxychlor

R.T.: 6.927 min
 Delta R.T.: 0.000 min
 Response: 40818256
 Conc: 53.93 ng/ml



#20 Methoxychlor

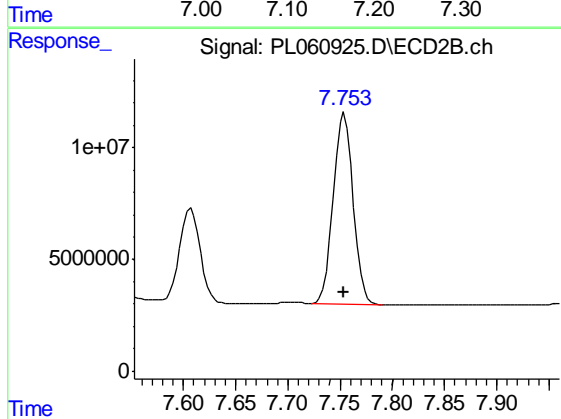
R.T.: 7.608 min
 Delta R.T.: 0.001 min
 Response: 54915119
 Conc: 43.89 ng/ml



#21 Endrin ketone

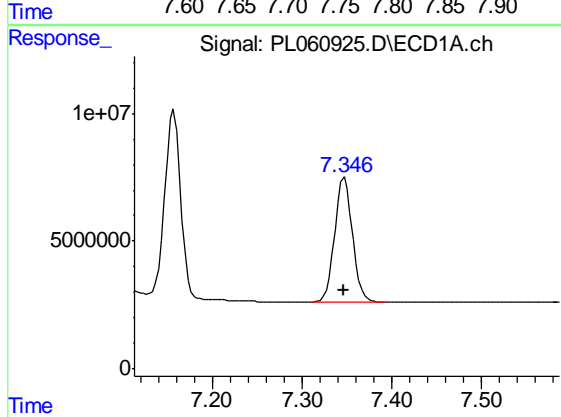
R.T.: 7.157 min
 Delta R.T.: 0.000 min
 Response: 87613175
 Conc: 56.40 ng/ml

Instrument :
 ECD_L
 ClientSampleId :
 PSTDCCC050



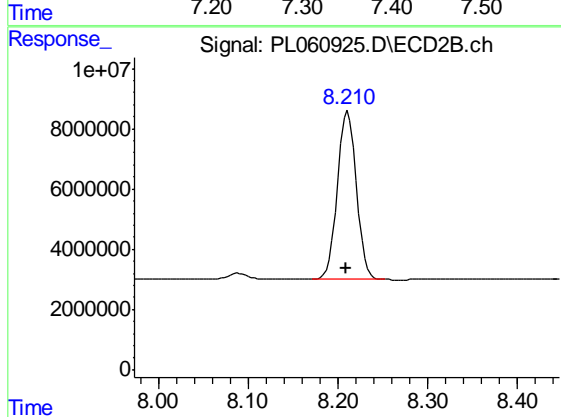
#21 Endrin ketone

R.T.: 7.754 min
 Delta R.T.: 0.000 min
 Response: 113399358
 Conc: 49.20 ng/ml



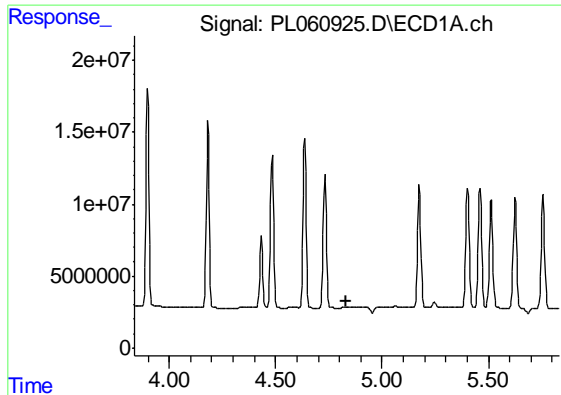
#22 Mirex

R.T.: 7.347 min
 Delta R.T.: 0.000 min
 Response: 66862033
 Conc: 55.85 ng/ml



#22 Mirex

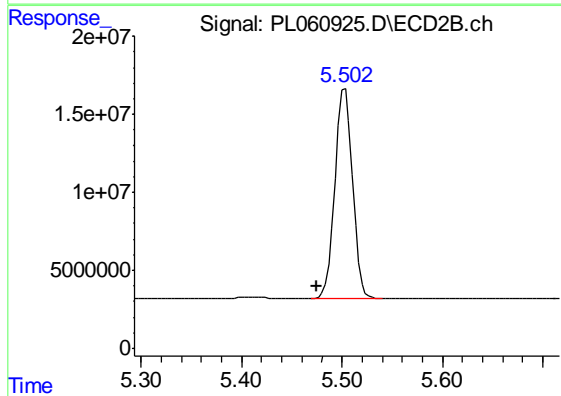
R.T.: 8.211 min
 Delta R.T.: 0.002 min
 Response: 82267989
 Conc: 50.93 ng/ml



#24 Chlordane-2

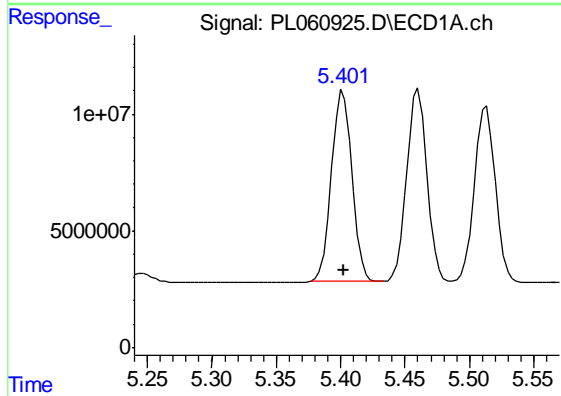
R.T.: 0.000 min
 Exp R.T. : 4.833 min
 Response: 0
 Conc: N.D.

Instrument :
 ECD_L
 ClientSampleId :
 PSTDCCC050



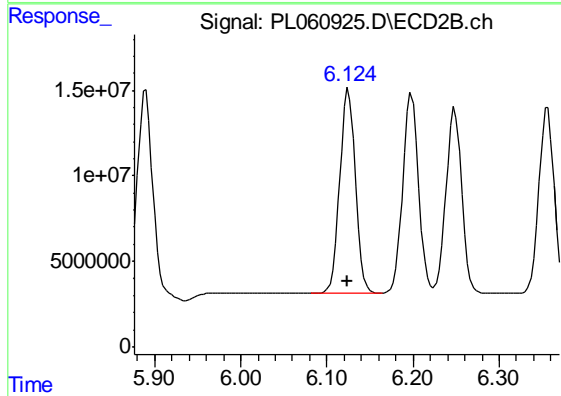
#24 Chlordane-2

R.T.: 5.503 min
 Delta R.T.: 0.028 min
 Response: 162658763
 Conc: 1510.32 ng/ml



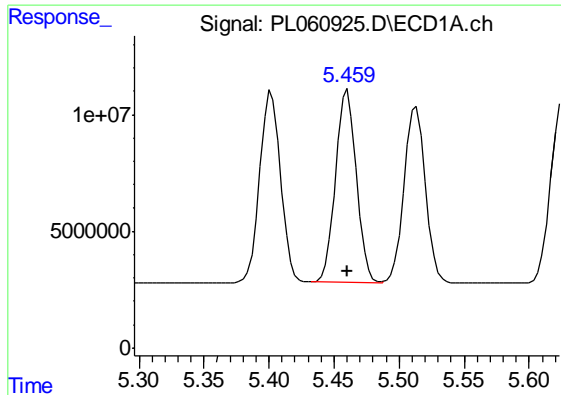
#25 Chlordane-3

R.T.: 5.402 min
 Delta R.T.: 0.000 min
 Response: 91486701
 Conc: 654.85 ng/ml



#25 Chlordane-3

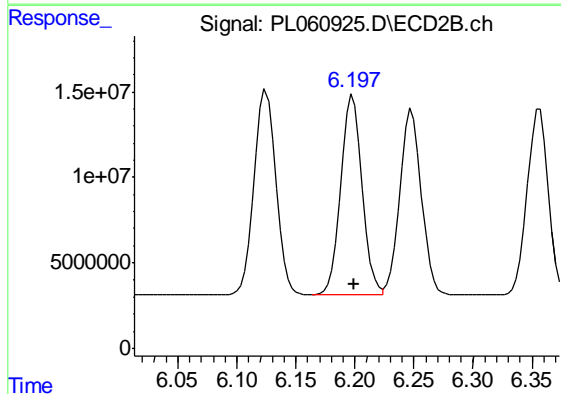
R.T.: 6.125 min
 Delta R.T.: 0.001 min
 Response: 151325588
 Conc: 375.26 ng/ml



#26 Chlordane-4

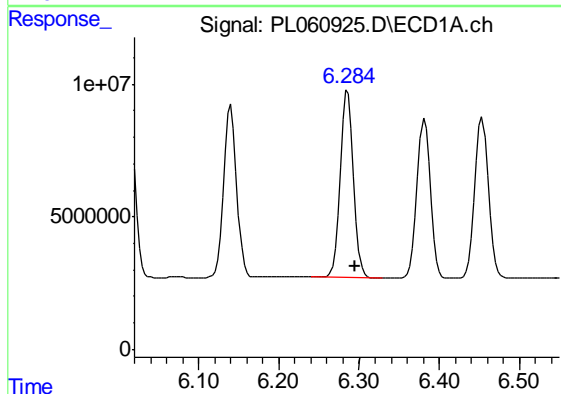
R.T.: 5.460 min
 Delta R.T.: 0.000 min
 Response: 91603368
 Conc: 799.96 ng/ml

Instrument :
 ECD_L
 ClientSampleId :
 PSTDCCC050



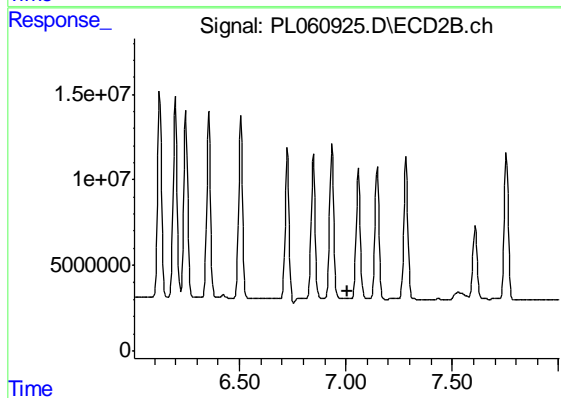
#26 Chlordane-4

R.T.: 6.198 min
 Delta R.T.: 0.000 min
 Response: 149414015
 Conc: 303.19 ng/ml



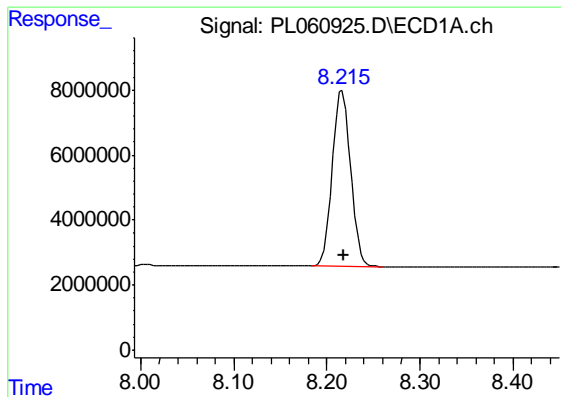
#27 Chlordane-5

R.T.: 6.286 min
 Delta R.T.: -0.010 min
 Response: 82537384
 Conc: 1655.97 ng/ml



#27 Chlordane-5

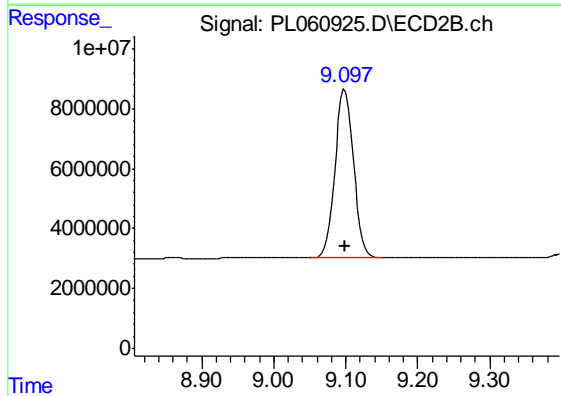
R.T.: 0.000 min
 Exp R.T. : 7.005 min
 Response: 0
 Conc: N.D.



#28 Decachlorobiphenyl

R.T.: 8.217 min
Delta R.T.: 0.000 min
Response: 74064244
Conc: 51.85 ng/ml

Instrument :
ECD_L
ClientSampleId :
PSTDCCC050



#28 Decachlorobiphenyl

R.T.: 9.099 min
Delta R.T.: 0.000 min
Response: 100229222
Conc: 49.59 ng/ml