

Data Path : Z:\pestpcbsrv\HPCHEM1\ECD_L\Data\PL082121\
 Data File : PL069265.D
 Signal(s) : Signal #1: ECD1A.ch Signal #2: ECD2B.ch
 Acq On : 20 Aug 2021 10:13
 Operator : AR\AJ
 Sample : PCHLORICC500
 Misc :
 ALS Vial : 6 Sample Multiplier: 1

Instrument :
 ECD_L
 ClientSampleId :
 PCHLORICC500

Integration File signal 1: autoint1.e
 Integration File signal 2: autoint2.e
 Quant Time: Aug 20 10:52:40 2021
 Quant Method : Z:\pestpcbsrv\HPCHEM1\ECD_L\methods\PL082021.M
 Quant Title : GC Extractables
 QLast Update : Fri Aug 20 10:52:23 2021
 Response via : Initial Calibration
 Integrator: ChemStation

Volume Inj. : 1 µl
 Signal #1 Phase : ZB-MR2 Signal #2 Phase: ZB-MR1
 Signal #1 Info : 30M x 0.32mm x0.2 Signal #2 Info : 30M x 0.32mm x0.5µm

Compound	RT#1	RT#2	Resp#1	Resp#2	ng/ml	ng/ml

System Monitoring Compounds						
1) SA Tetrachlo...	4.634	5.569	24454587	72590925	48.724	50.000
28) SA Decachlor...	10.404	11.494	34053805	59690927	50.000	50.000
Target Compounds						
23) Chlordane-1	5.964	6.954	8524439	26593783	500.000	500.000
24) Chlordane-2	6.653	7.545	11916807	27778594	500.000	500.000
25) Chlordane-3	7.354	8.302	31380829	103.8E6	500.000	500.000
26) Chlordane-4	7.423	8.385	33294103	124.8E6	500.000	500.000
27) Chlordane-5	8.373	9.273	11912038	22212253	500.000	500.000

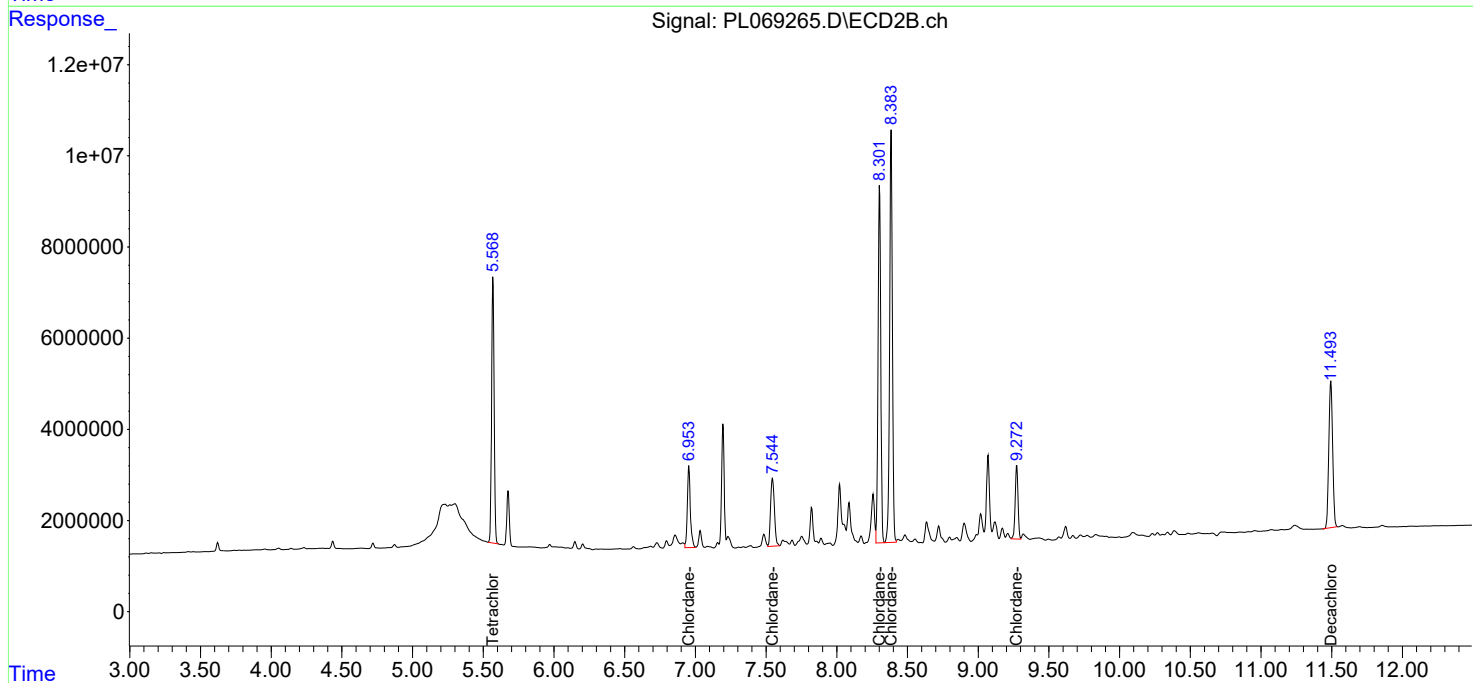
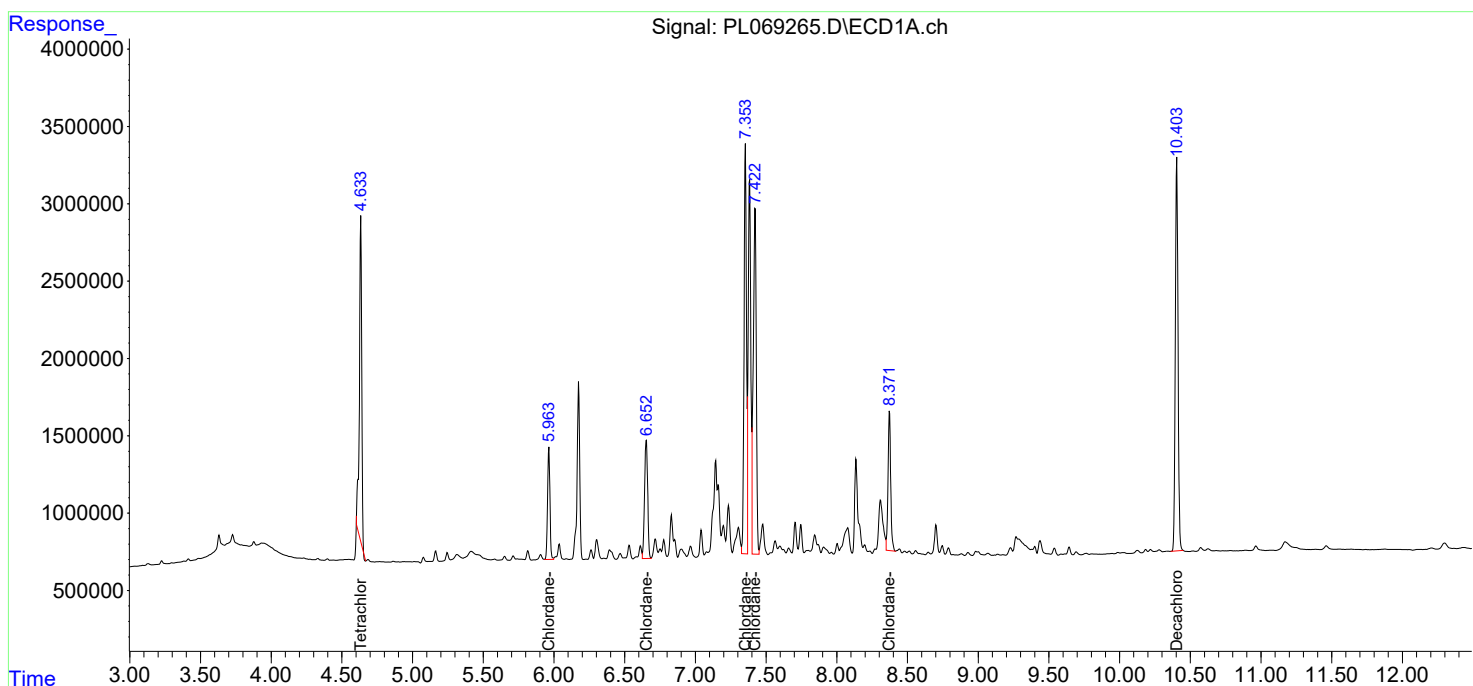
(f)=RT Delta > 1/2 Window (#)=Amounts differ by > 25% (m)=manual int.

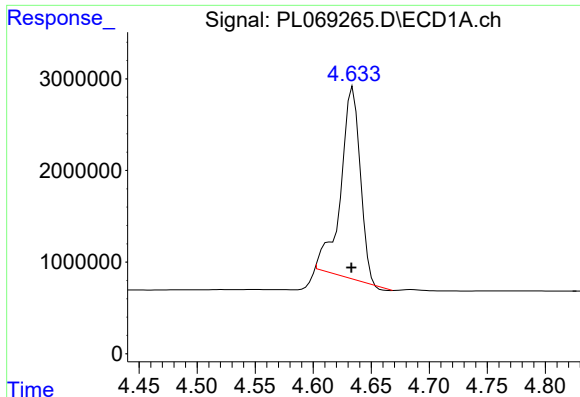
Data Path : Z:\pestpcbsrv\HPCHEM1\ECD_L\Data\PL082121\
 Data File : PL069265.D
 Signal(s) : Signal #1: ECD1A.ch Signal #2: ECD2B.ch
 Acq On : 20 Aug 2021 10:13
 Operator : AR\AJ
 Sample : PCHLORICC500
 Misc :
 ALS Vial : 6 Sample Multiplier: 1

Instrument :
 ECD_L
 ClientSampled :
 PCHLORICC500

Integration File signal 1: autoint1.e
 Integration File signal 2: autoint2.e
 Quant Time: Aug 20 10:52:40 2021
 Quant Method : Z:\pestpcbsrv\HPCHEM1\ECD_L\methods\PL082021.M
 Quant Title : GC Extractables
 QLast Update : Fri Aug 20 10:52:23 2021
 Response via : Initial Calibration
 Integrator: ChemStation

Volume Inj. : 1 µl
 Signal #1 Phase : ZB-MR2 Signal #2 Phase: ZB-MR1
 Signal #1 Info : 30M x 0.32mm x0.2 Signal #2 Info : 30M x 0.32mm x0.5µm

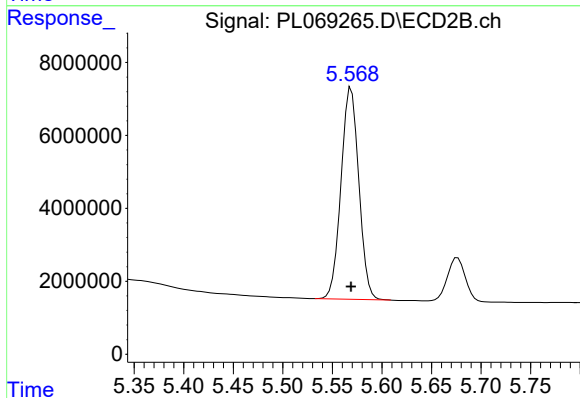




#1 Tetrachloro-m-xylene

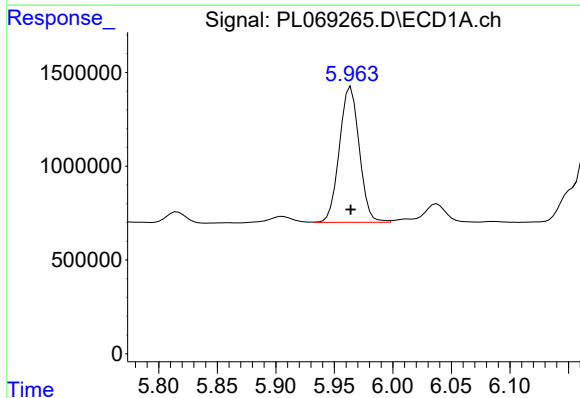
R.T.: 4.634 min
 Delta R.T.: 0.001 min
 Response: 24454587
 Conc: 48.72 ng/ml

Instrument :
 ECD_L
 ClientSampleId :
 PCHLORICC500



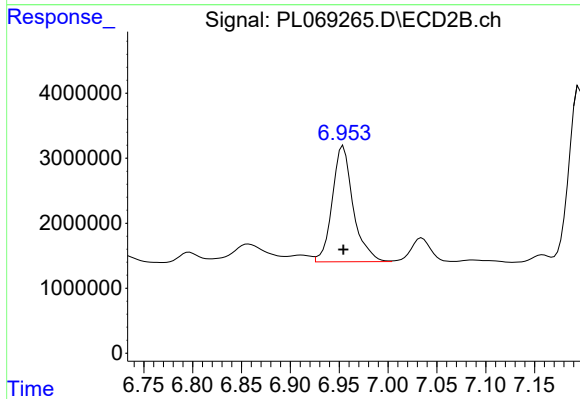
#1 Tetrachloro-m-xylene

R.T.: 5.569 min
 Delta R.T.: 0.000 min
 Response: 72590925
 Conc: 50.00 ng/ml



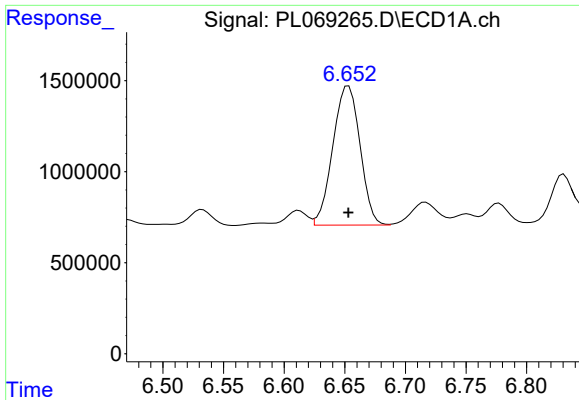
#23 Chlordane-1

R.T.: 5.964 min
 Delta R.T.: 0.000 min
 Response: 8524439
 Conc: 500.00 ng/ml



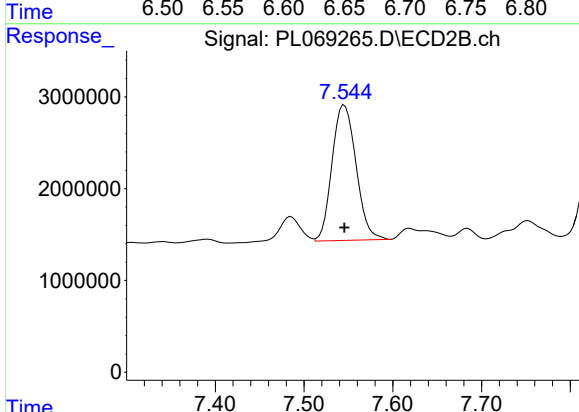
#23 Chlordane-1

R.T.: 6.954 min
 Delta R.T.: 0.000 min
 Response: 26593783
 Conc: 500.00 ng/ml

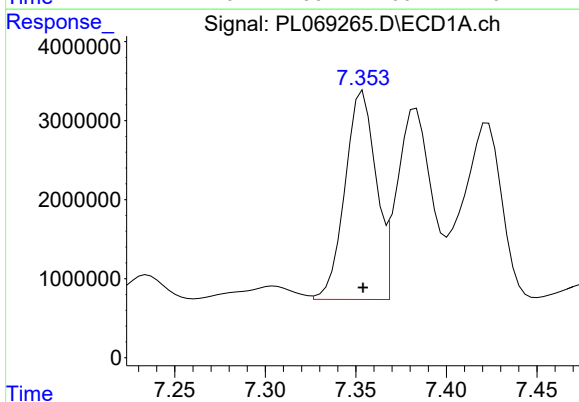


#24 Chlordane-2
 R.T.: 6.653 min
 Delta R.T.: 0.000 min
 Response: 11916807
 Conc: 500.00 ng/ml

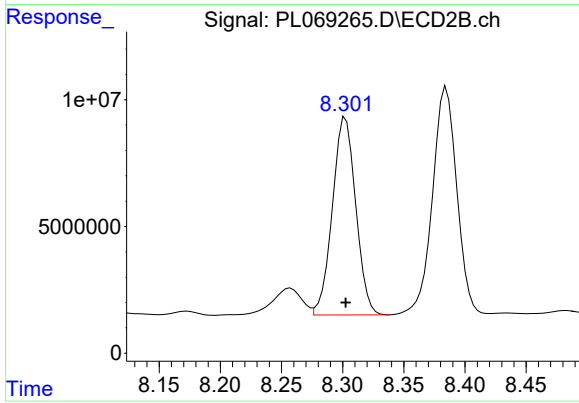
Instrument :
 ECD_L
 ClientSampleId :
 PCHLORICC500



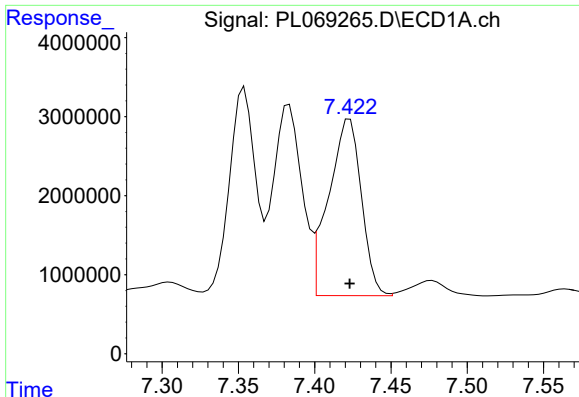
#24 Chlordane-2
 R.T.: 7.545 min
 Delta R.T.: 0.000 min
 Response: 27778594
 Conc: 500.00 ng/ml



#25 Chlordane-3
 R.T.: 7.354 min
 Delta R.T.: 0.000 min
 Response: 31380829
 Conc: 500.00 ng/ml



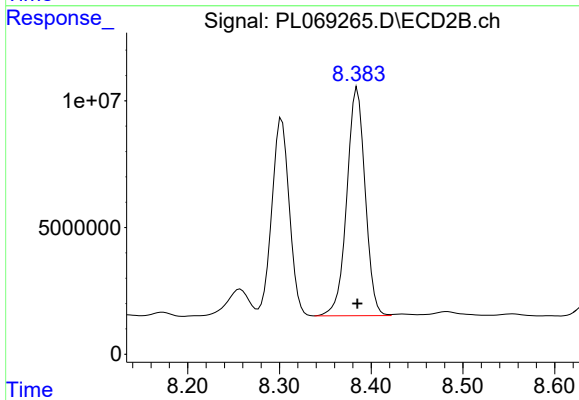
#25 Chlordane-3
 R.T.: 8.302 min
 Delta R.T.: 0.000 min
 Response: 103797957
 Conc: 500.00 ng/ml



#26 Chlordane-4

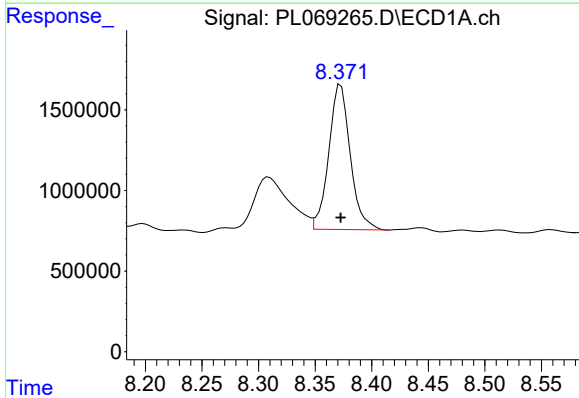
R.T.: 7.423 min
 Delta R.T.: 0.000 min
 Response: 33294103
 Conc: 500.00 ng/ml

Instrument :
 ECD_L
 ClientSampleId :
 PCHLORICC500



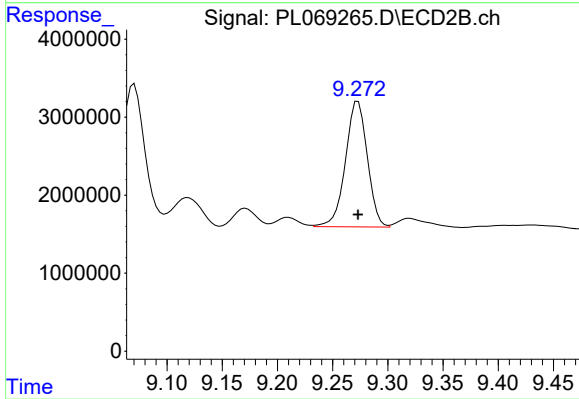
#26 Chlordane-4

R.T.: 8.385 min
 Delta R.T.: 0.000 min
 Response: 124805366
 Conc: 500.00 ng/ml



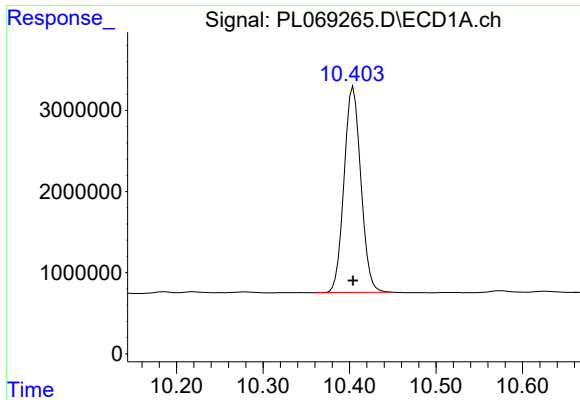
#27 Chlordane-5

R.T.: 8.373 min
 Delta R.T.: 0.000 min
 Response: 11912038
 Conc: 500.00 ng/ml



#27 Chlordane-5

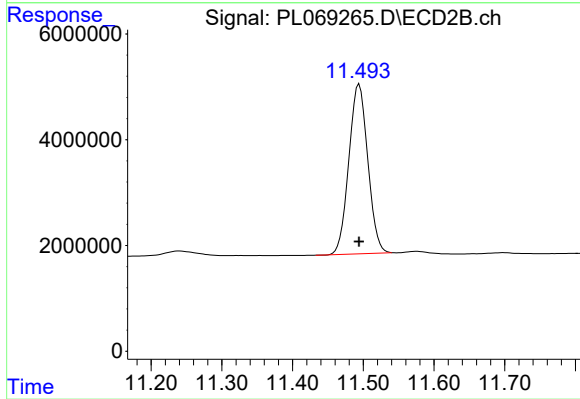
R.T.: 9.273 min
 Delta R.T.: 0.000 min
 Response: 22212253
 Conc: 500.00 ng/ml



#28 Decachlorobiphenyl

R.T.: 10.404 min
Delta R.T.: 0.000 min
Response: 34053805
Conc: 50.00 ng/ml

Instrument :
ECD_L
ClientSampled :
PCHLORICC500



#28 Decachlorobiphenyl

R.T.: 11.494 min
Delta R.T.: 0.000 min
Response: 59690927
Conc: 50.00 ng/ml