

Data Path : Z:\pestpcbsrv\HPCHEM1\ECD_L\Data\PL082124\
 Data File : PL091244.D
 Signal(s) : Signal #1: ECD1A.ch Signal #2: ECD2B.ch
 Acq On : 22 Aug 2024 01:58
 Operator : AR\AJ
 Sample : P3504-19
 Misc :
 ALS Vial : 26 Sample Multiplier: 1

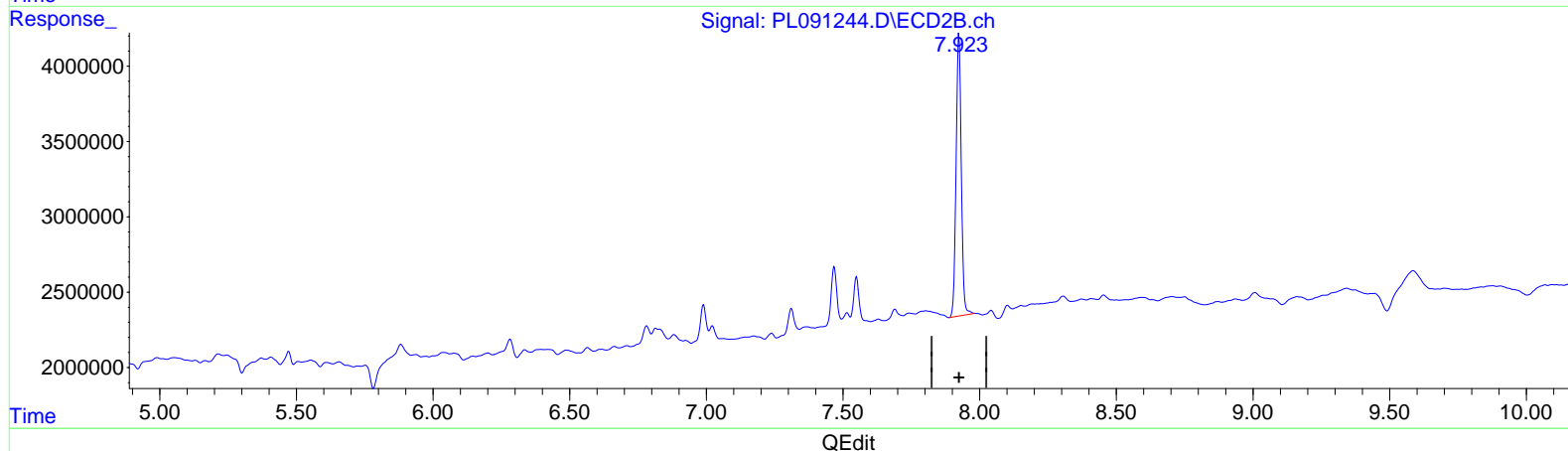
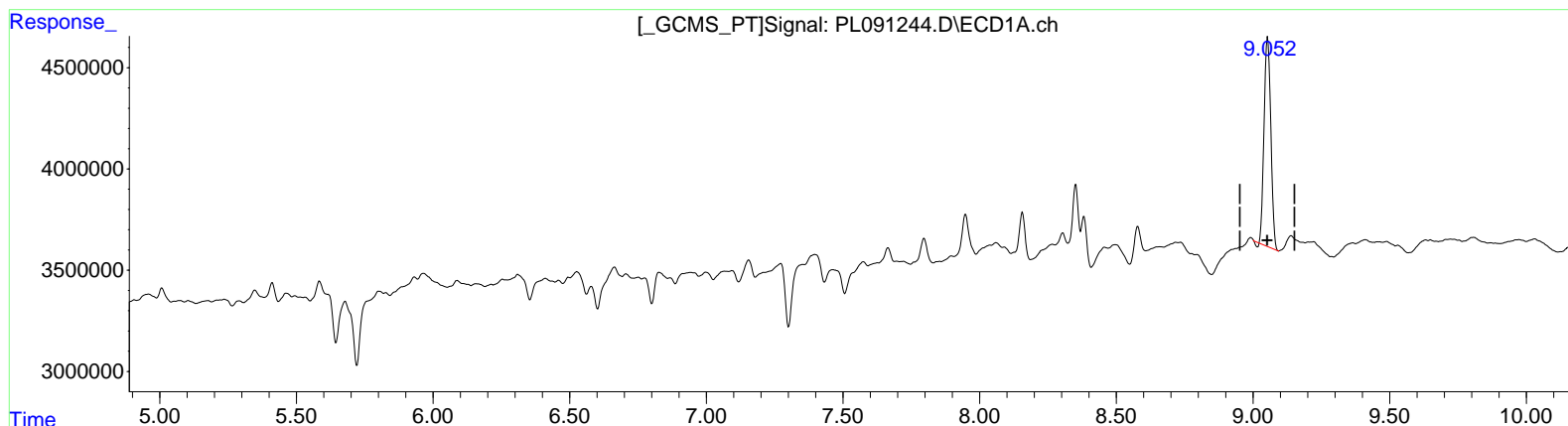
Instrument :
 ECD_L
 ClientSampleId :
 DCYF5

Manual Integrations APPROVED

Reviewed By : Abdul Mirza 08/22/2024
 Supervised By : Ankita Jodhani 08/22/2024

Integration File signal 1: autoint1.e
 Integration File signal 2: autoint2.e
 Quant Time: Aug 22 05:25:08 2024
 Quant Method : Z:\pestpcbsrv\HPCHEM1\ECD_L\methods\PL080824CLP.M
 Quant Title : GC Extractables
 QLast Update : Sat Aug 10 07:10:30 2024
 Response via : Initial Calibration
 Integrator: ChemStation

Volume Inj. : 1 µl
 Signal #1 Phase : ZB-MR2 Signal #2 Phase: ZB-MR1
 Signal #1 Info : 30M x 0.32mm x 0.2 Signal #2 Info : 30M x 0.32mm x 0.50µm



(27) Decachlorobiphenyl (SA)
 9.054min 11.442 ng/ml
 response 17813573

(27) Decachlorobiphenyl #2 (SA)
 7.924min 14.499 ng/ml
 response 24883792

Data Path : Z:\pestpcbsrv\HPCHEM1\ECD_L\Data\PL082124\
 Data File : PL091244.D
 Signal(s) : Signal #1: ECD1A.ch Signal #2: ECD2B.ch
 Acq On : 22 Aug 2024 01:58
 Operator : AR\AJ
 Sample : P3504-19
 Misc :
 ALS Vial : 26 Sample Multiplier: 1

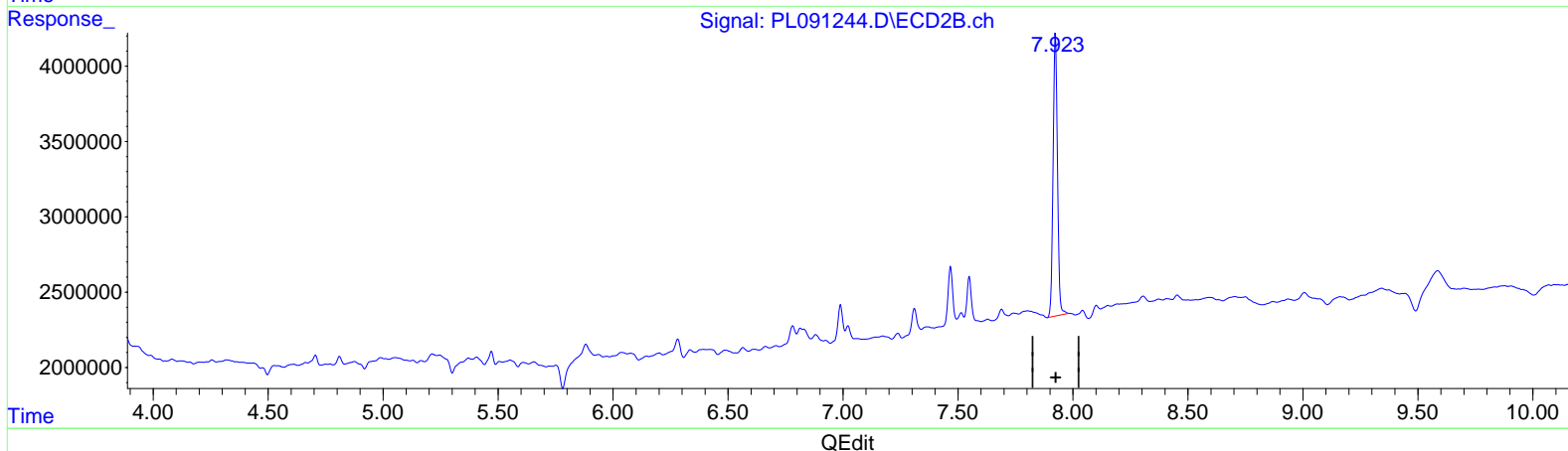
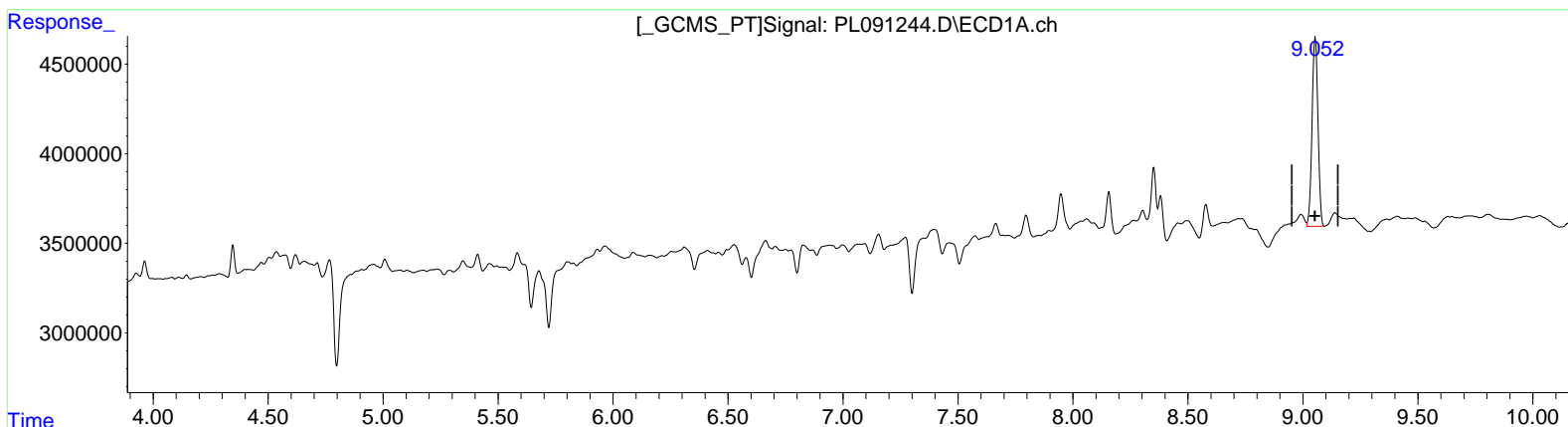
Instrument :
 ECD_L
 ClientSampleId :
 DCYF5

Manual Integrations APPROVED

Reviewed By : Abdul Mirza 08/22/2024
 Supervised By : Ankita Jodhani 08/22/2024

Integration File signal 1: autoint1.e
 Integration File signal 2: autoint2.e
 Quant Time: Aug 22 05:25:08 2024
 Quant Method : Z:\pestpcbsrv\HPCHEM1\ECD_L\methods\PL080824CLP.M
 Quant Title : GC Extractables
 QLast Update : Sat Aug 10 07:10:30 2024
 Response via : Initial Calibration
 Integrator: ChemStation

Volume Inj. : 1 µl
 Signal #1 Phase : ZB-MR2 Signal #2 Phase: ZB-MR1
 Signal #1 Info : 30M x 0.32mm x 0.2 Signal #2 Info : 30M x 0.32mm x 0.50µm



(27) Decachlorobiphenyl (SA)

9.052min 12.088 ng/ml m

response 18818836

(27) Decachlorobiphenyl #2 (SA)

7.924min 14.499 ng/ml

response 24883792