

Data Path : Z:\pestpcbsrv\HPCHEM1\ECD_L\Data\PL082223\
 Data File : PL084911.D
 Signal (s) : Signal #1: ECD1A.ch Signal #2: ECD2B.ch
 Acq On : 22 Aug 2023 10:36
 Operator : ARVAJ
 Sample : INDA504
 Misc :
 ALS Vial : 11 Sample Multiplier: 1

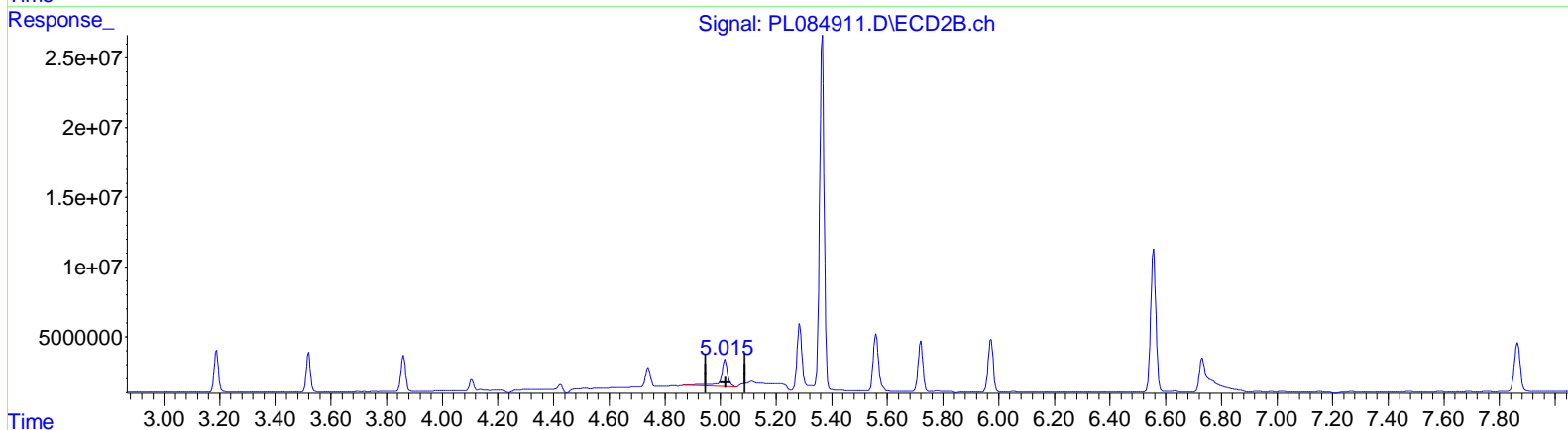
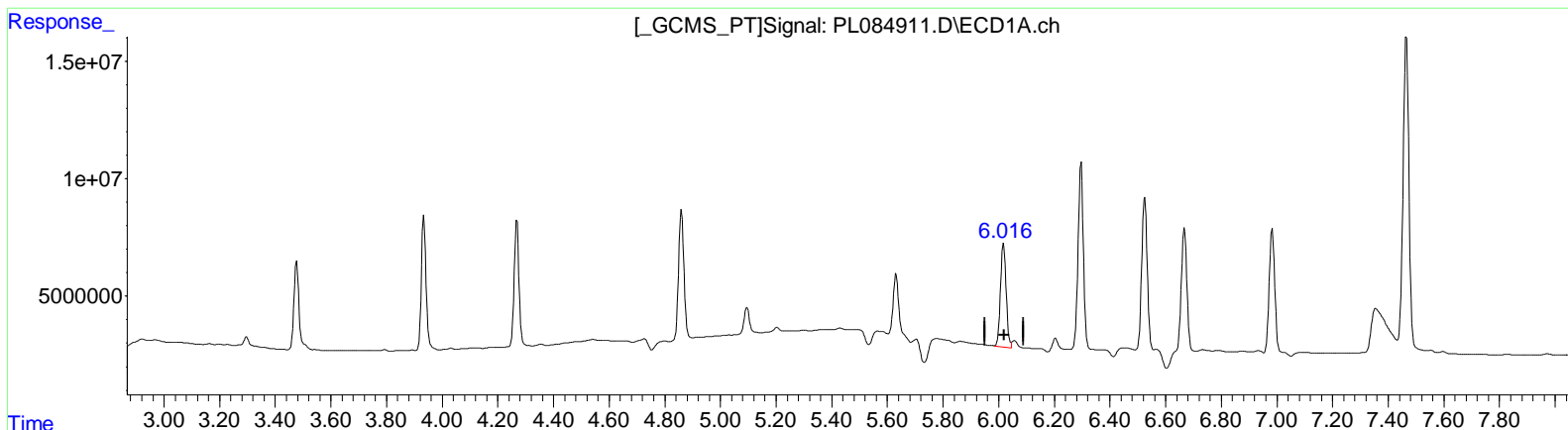
Instrument :
 ECD_L
LabSampleID :
 INDA504

Manual Integrations APPROVED

Reviewed By : Abdul Mirza 08/23/2023
 Supervised By : Ankita Jodhani 08/23/2023

Integration File signal 1: autoint1.e
 Integration File signal 2: autoint2.e
 Quant Time: Aug 23 00:50:06 2023
 Quant Method : Z:\pestpcbsrv\HPCHEM1\ECD_L\methods\PL081523CLP.M
 Quant Title : GC Extractables
 QLast Update : Tue Aug 15 05:52:51 2023
 Response via : Initial Calibration
 Integrator: ChemStation

Volume Inj. : 1 µl
 Signal #1 Phase : ZB-MR2 Signal #2 Phase: ZB-MR1
 Signal #1 Info : 30M x 0.32mm x 0.2 Signal #2 Info : 30M x 0.32mm x 0.50µm



QEdit

(9) Endosulfan I (A)
 6.017min 21.563 ng/ml
 response 61445179

(9) Endosulfan I #2 (A)
 5.017min 24.813 ng/ml
 response 33455109

Data Path : Z:\pestpcbsrv\HPCHEM1\ECD_L\Data\PL082223\
 Data File : PL084911.D
 Signal(s) : Signal #1: ECD1A.ch Signal #2: ECD2B.ch
 Acq On : 22 Aug 2023 10:36
 Operator : ARVAJ
 Sample : INDA504
 Misc :
 ALS Vial : 11 Sample Multiplier: 1

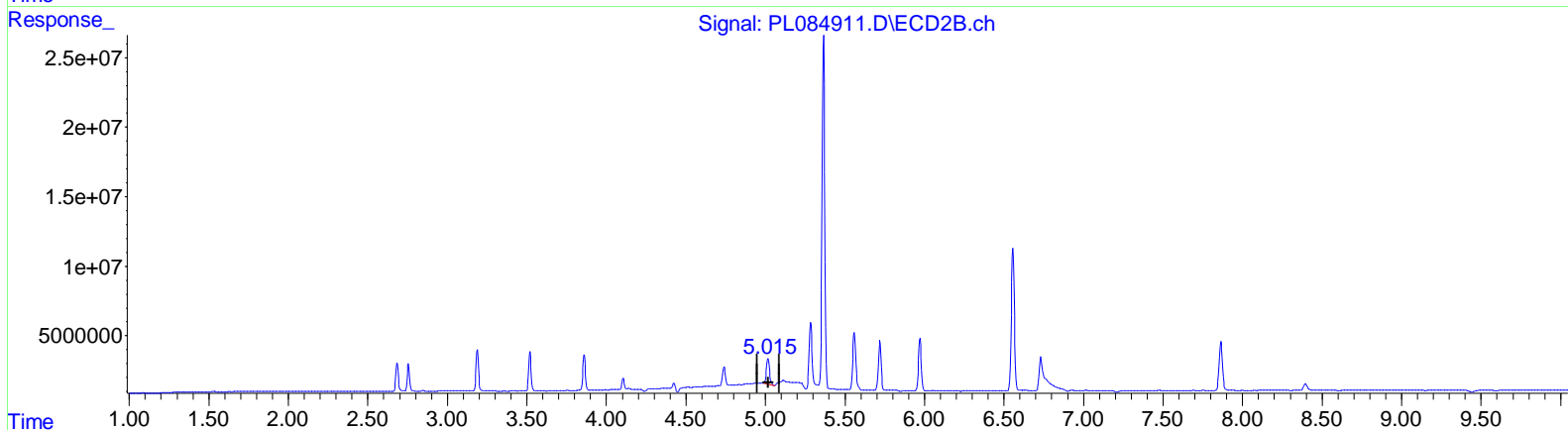
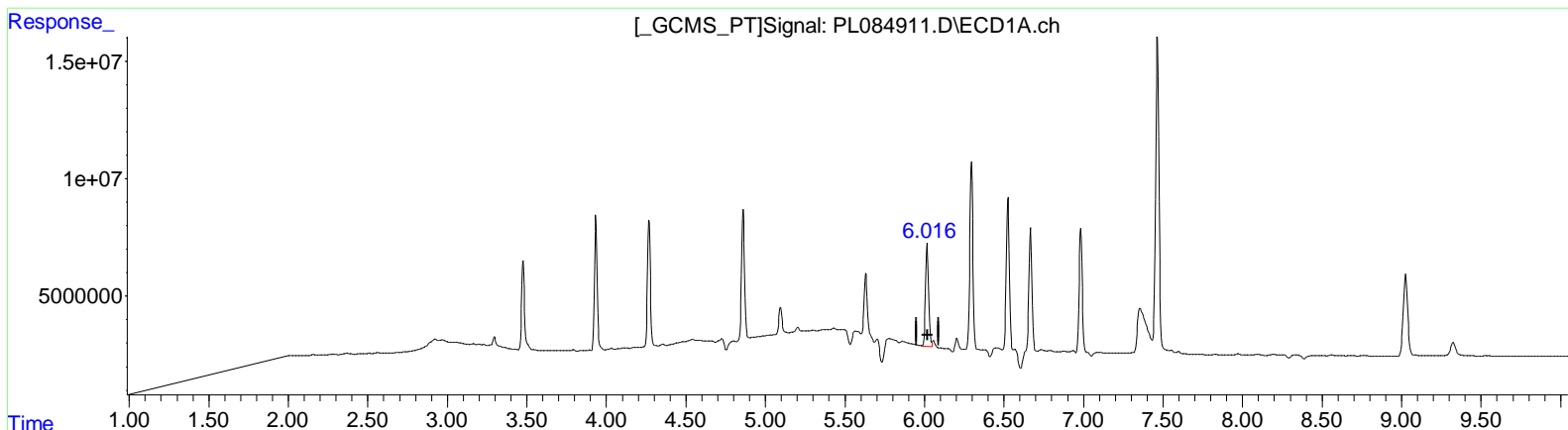
Instrument :
 ECD_L
Lab SampleID :
 INDA504

Manual Integrations APPROVED

Reviewed By : Abdul Mirza 08/23/2023
 Supervised By : Ankita Jodhani 08/23/2023

Integration File signal 1: autoint1.e
 Integration File signal 2: autoint2.e
 Quant Time: Aug 23 00:50:06 2023
 Quant Method : Z:\pestpcbsrv\HPCHEM1\ECD_L\methods\PL081523CLP.M
 Quant Title : GC Extractables
 QLast Update : Tue Aug 15 05:52:51 2023
 Response via : Initial Calibration
 Integrator: ChemStation

Volume Inj. : 1 µl
 Signal #1 Phase : ZB-MR2 Signal #2 Phase: ZB-MR1
 Signal #1 Info : 30M x 0.32mm x 0.2 Signal #2 Info : 30M x 0.32mm x 0.50µm



QEdit

(9) Endosulfan I (A)
 6.016min 21.457 ng/ml m
 response 61142099

(9) Endosulfan I #2 (A)
 5.015min 18.191 ng/ml m
 response 24526560

Data Path : Z:\pestpcbsrv\HPCHEM1\ECD_L\Data\PL082223\
 Data File : PL084911.D
 Signal(s) : Signal #1: ECD1A.ch Signal #2: ECD2B.ch
 Acq On : 22 Aug 2023 10:36
 Operator : ARVAJ
 Sample : INDA504
 Misc :
 ALS Vial : 11 Sample Multiplier: 1

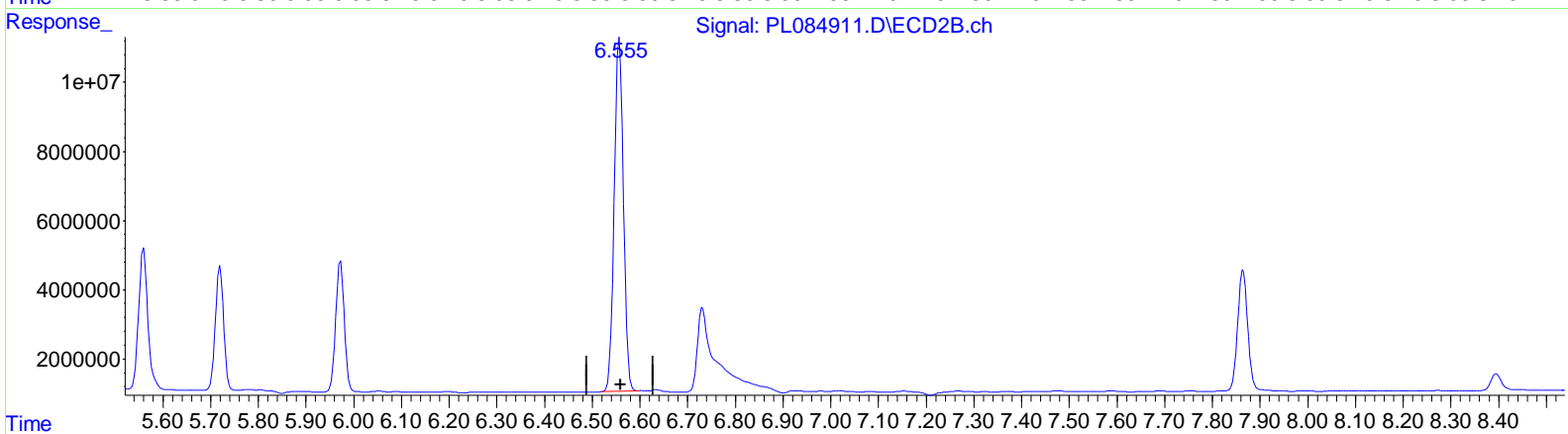
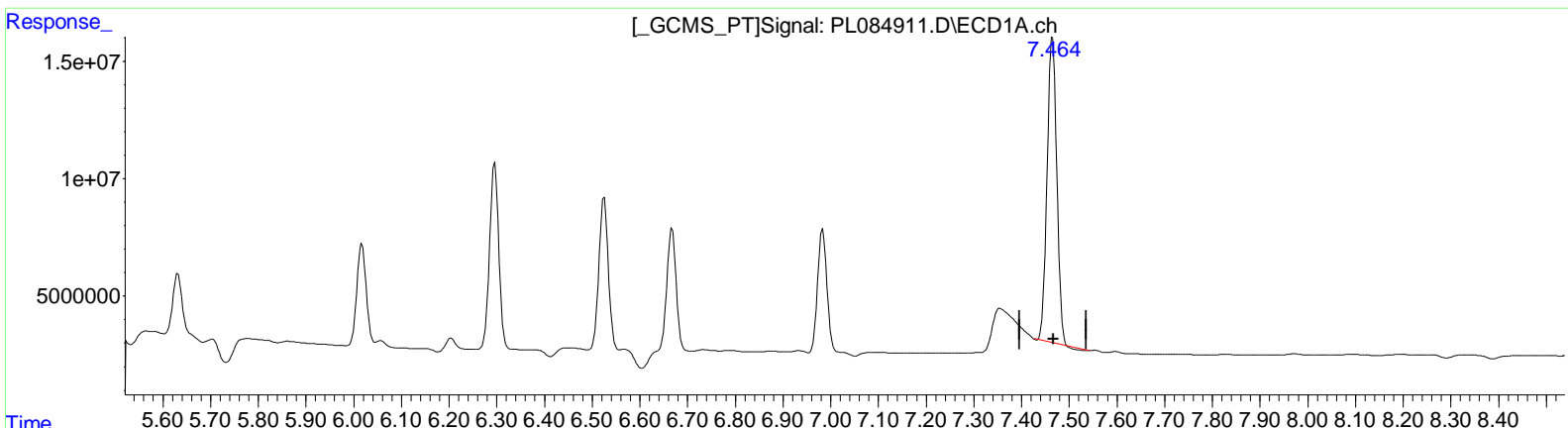
Instrument :
 ECD_L
Lab SampleID :
 INDA504

Manual Integrations APPROVED

Reviewed By : Abdul Mirza 08/23/2023
 Supervised By : Ankita Jodhani 08/23/2023

Integration File signal 1: autoint1.e
 Integration File signal 2: autoint2.e
 Quant Time: Aug 23 00:50:06 2023
 Quant Method : Z:\pestpcbsrv\HPCHEM1\ECD_L\methods\PL081523CLP.M
 Quant Title : GC Extractables
 QLast Update : Tue Aug 15 05:52:51 2023
 Response via : Initial Calibration
 Integrator: ChemStation

Volume Inj. : 1 µl
 Signal #1 Phase : ZB-MR2 Signal #2 Phase: ZB-MR1
 Signal #1 Info : 30M x 0.32mm x 0.2 Signal #2 Info : 30M x 0.32mm x 0.50µm



QEdit

(20) Methoxychlor (A)
 7.465min 189.213 ng/ml
 response 183586435

(20) Methoxychlor #2 (A)
 6.557min 192.779 ng/ml
 response 136425608

Data Path : Z:\pestpcbsrv\HPCHEM1\ECD_L\Data\PL082223\
 Data File : PL084911.D
 Signal(s) : Signal #1: ECD1A.ch Signal #2: ECD2B.ch
 Acq On : 22 Aug 2023 10:36
 Operator : ARVAJ
 Sample : INDA504
 Misc :
 ALS Vial : 11 Sample Multiplier: 1

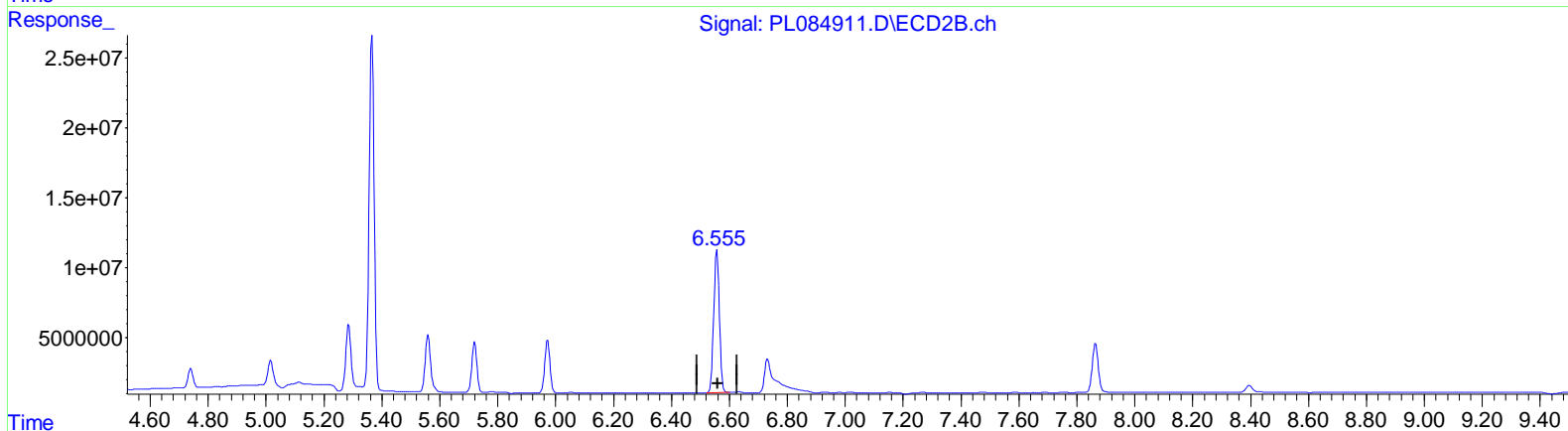
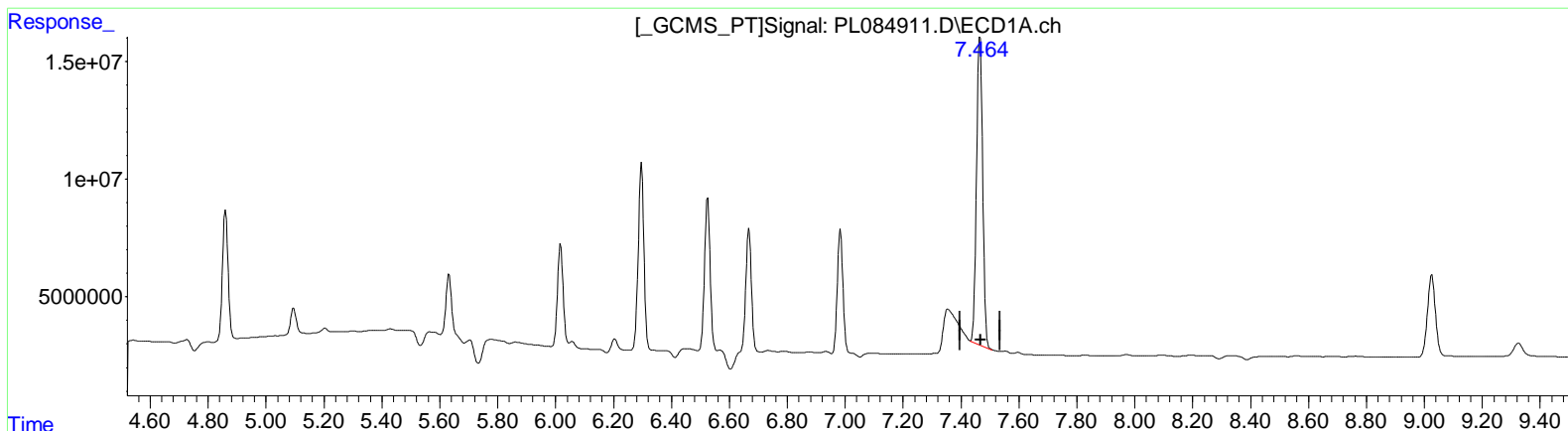
Instrument :
 ECD_L
LabSampleID :
 INDA504

Manual Integrations APPROVED

Reviewed By : Abdul Mirza 08/23/2023
 Supervised By : Ankita Jodhani 08/23/2023

Integration File signal 1: autoint1.e
 Integration File signal 2: autoint2.e
 Quant Time: Aug 23 00:50:06 2023
 Quant Method : Z:\pestpcbsrv\HPCHEM1\ECD_L\methods\PL081523CLP.M
 Quant Title : GC Extractables
 QLast Update : Tue Aug 15 05:52:51 2023
 Response via : Initial Calibration
 Integrator: ChemStation

Volume Inj. : 1 µl
 Signal #1 Phase : ZB-MR2 Signal #2 Phase: ZB-MR1
 Signal #1 Info : 30M x 0.32mm x 0.2 Signal #2 Info : 30M x 0.32mm x 0.50µm



(20) Methoxychlor (A)
 7.464min 193.462 ng/ml m
 response 187708958

(20) Methoxychlor #2 (A)
 6.557min 192.779 ng/ml
 response 136425608