

Data Path : Z:\pestpcbsrv\HPCHEM1\ECD_L\Data\PL082319\
 Data File : PL051767.D
 Signal(s) : Signal #1: ECD1A.ch Signal #2: ECD2B.ch
 Acq On : 23 Aug 2019 17:25
 Operator : SG\AJ
 Sample : K4493-32
 Misc :
 ALS Vial : 37 Sample Multiplier: 1

Instrument :
 ECD_L
 ClientSampleId :

Integration File signal 1: autoint1.e
 Integration File signal 2: autoint2.e
 Quant Time: Aug 23 22:47:33 2019
 Quant Method : Z:\pestpcbsrv\HPCHEM1\ECD_L\methods\PL081919.M
 Quant Title : GC Extractables
 QLast Update : Mon Aug 19 18:03:07 2019
 Response via : Initial Calibration
 Integrator: ChemStation

Volume Inj. : 1 µl
 Signal #1 Phase : ZB-MR2 Signal #2 Phase: ZB-MR1
 Signal #1 Info : 30M x 0.32mm x0.2 Signal #2 Info : 30M x 0.32mm x0.5µm

Compound	RT#1	RT#2	Resp#1	Resp#2	ng/ml	ng/ml
System Monitoring Compounds						
1) SA Tetrachlo...	3.314	3.925	187.8E6	47794558	21.943	21.876
28) SA Decachlor...	7.971	8.951	207.0E6	51765410	17.053	17.006
Target Compounds						
6) B beta-BHC	0.000	4.802f	0	4551768	N.D.	3.123 #
15) B Endosulfa...	0.000	6.845f	0	3400102	N.D.	1.032 #

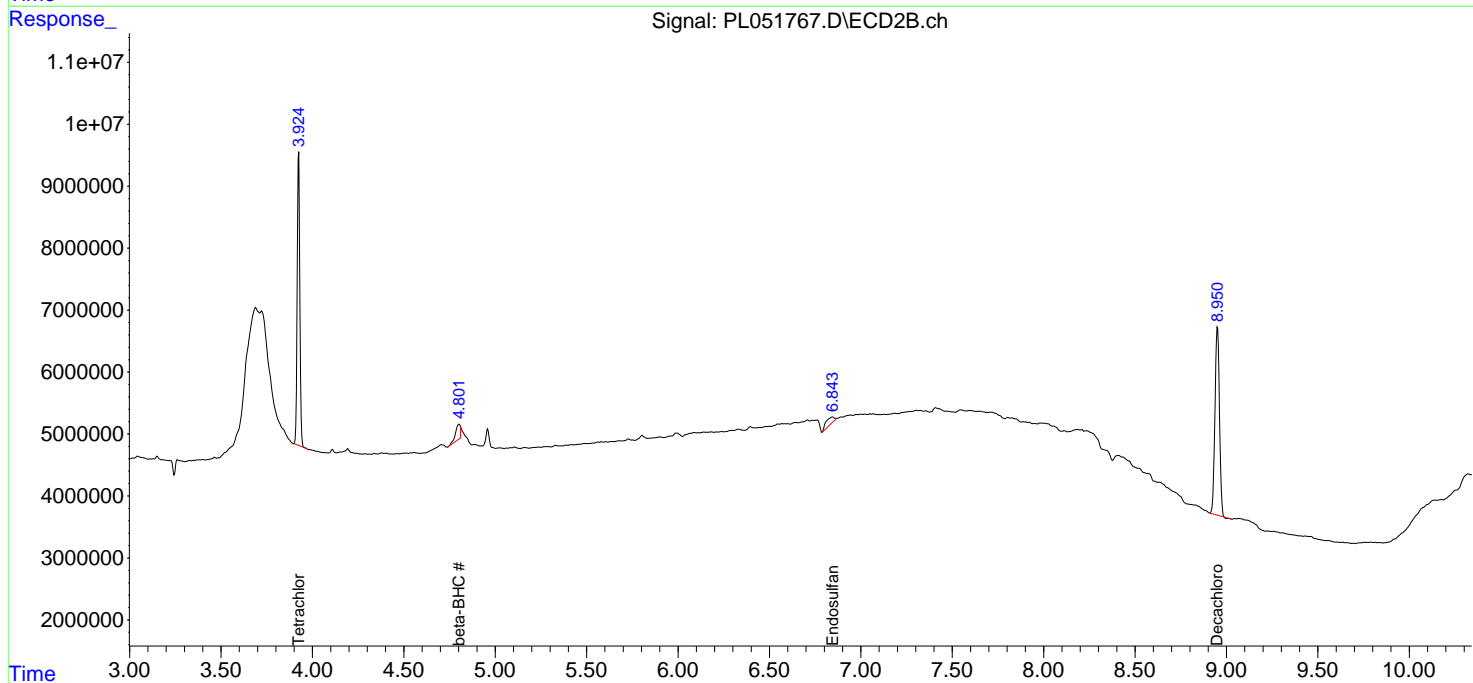
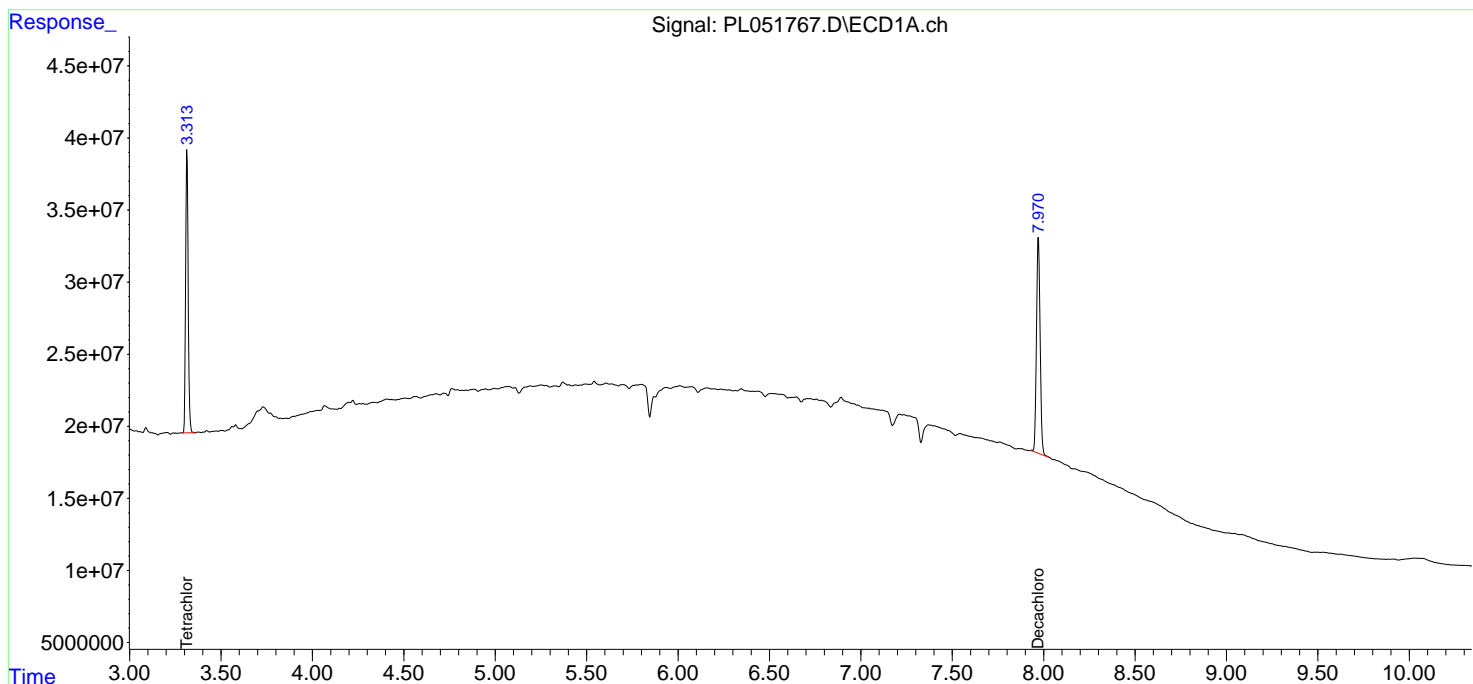
(f)=RT Delta > 1/2 Window (#)=Amounts differ by > 25% (m)=manual int.

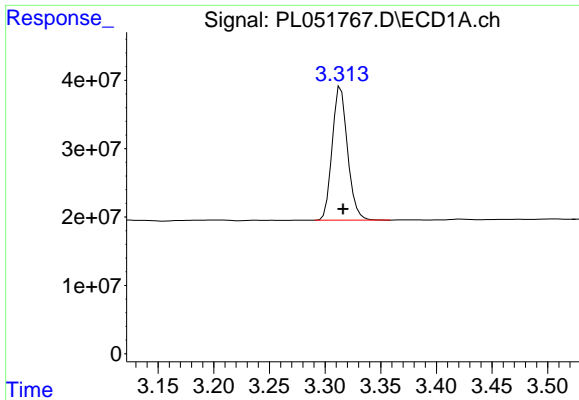
Data Path : Z:\pestpcbsrv\HPCHEM1\ECD_L\Data\PL082319\
 Data File : PL051767.D
 Signal(s) : Signal #1: ECD1A.ch Signal #2: ECD2B.ch
 Acq On : 23 Aug 2019 17:25
 Operator : SG\AJ
 Sample : K4493-32
 Misc :
 ALS Vial : 37 Sample Multiplier: 1

Instrument :
 ECD_L
 ClientSampled :

Integration File signal 1: autoint1.e
 Integration File signal 2: autoint2.e
 Quant Time: Aug 23 22:47:33 2019
 Quant Method : Z:\pestpcbsrv\HPCHEM1\ECD_L\methods\PL081919.M
 Quant Title : GC Extractables
 QLast Update : Mon Aug 19 18:03:07 2019
 Response via : Initial Calibration
 Integrator: ChemStation

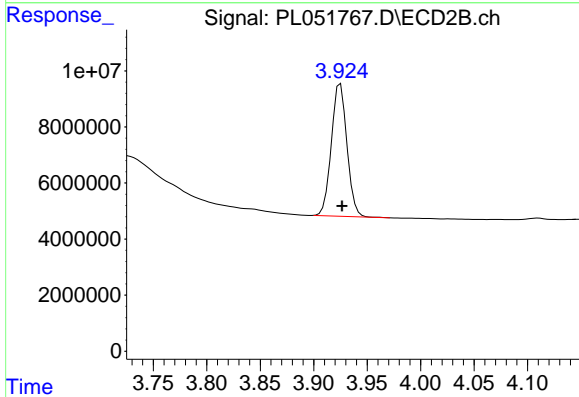
Volume Inj. : 1 µl
 Signal #1 Phase : ZB-MR2 Signal #2 Phase: ZB-MR1
 Signal #1 Info : 30M x 0.32mm x0.2 Signal #2 Info : 30M x 0.32mm x0.5µm



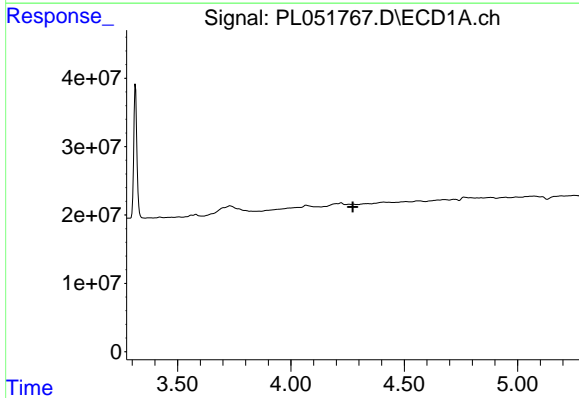


#1 Tetrachloro-m-xylene
 R.T.: 3.314 min
 Delta R.T.: -0.002 min
 Response: 187800419
 Conc: 21.94 ng/ml

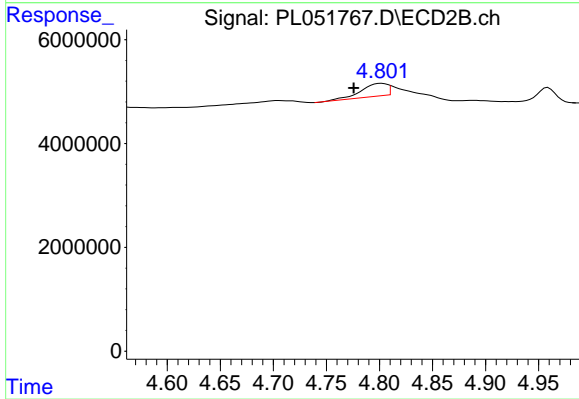
Instrument :
 ECD_L
 ClientSampleId :



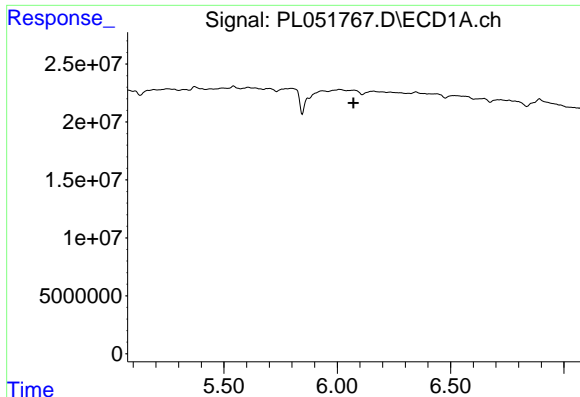
#1 Tetrachloro-m-xylene
 R.T.: 3.925 min
 Delta R.T.: -0.002 min
 Response: 47794558
 Conc: 21.88 ng/ml



#6 beta-BHC
 R.T.: 0.000 min
 Exp R.T. : 4.273 min
 Response: 0
 Conc: N.D.



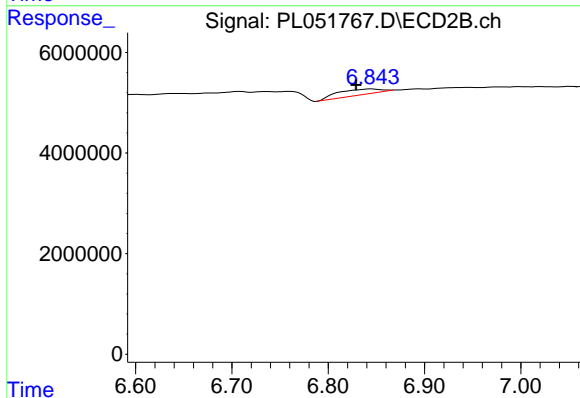
#6 beta-BHC
 R.T.: 4.802 min
 Delta R.T.: 0.026 min
 Response: 4551768
 Conc: 3.12 ng/ml



#15 Endosulfan II

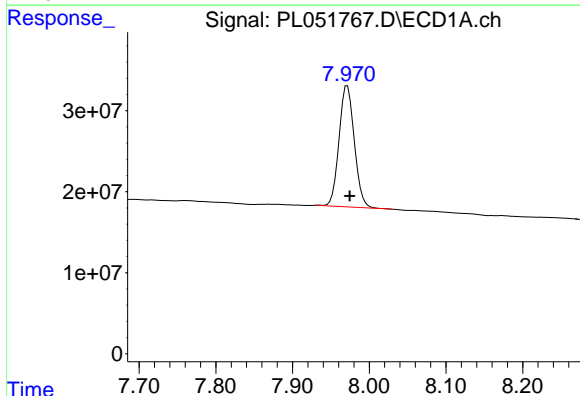
R.T.: 0.000 min
 Exp R.T.: 6.072 min
 Response: 0
 Conc: N.D.

Instrument :
 ECD_L
 ClientSampleId :



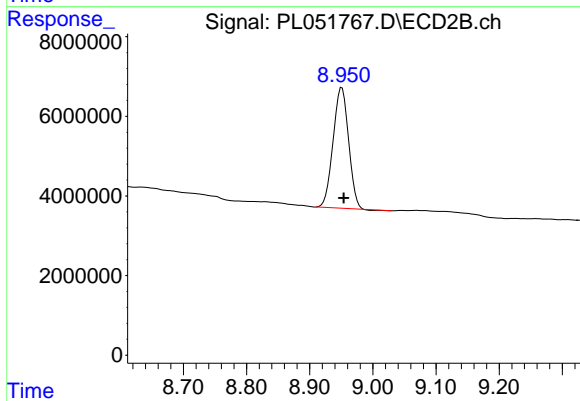
#15 Endosulfan II

R.T.: 6.845 min
 Delta R.T.: 0.016 min
 Response: 3400102
 Conc: 1.03 ng/ml



#28 Decachlorobiphenyl

R.T.: 7.971 min
 Delta R.T.: -0.003 min
 Response: 206990601
 Conc: 17.05 ng/ml



#28 Decachlorobiphenyl

R.T.: 8.951 min
 Delta R.T.: -0.003 min
 Response: 51765410
 Conc: 17.01 ng/ml