

Data Path : Z:\pestpcbsrv\HPCHEM1\ECD\_L\Data\PL082323\  
 Data File : PL084927.D  
 Signal(s) : Signal #1: ECD1A.ch Signal #2: ECD2B.ch  
 Acq On : 23 Aug 2023 11:53  
 Operator : AR\AJ  
 Sample : 03573-2  
 Misc : TOX MDL WATER  
 ALS Vial : 5 Sample Multiplier: 1

Instrument :  
 ECD\_L  
 ClientSampleId :

Integration File signal 1: autoint1.e  
 Integration File signal 2: autoint2.e  
 Quant Time: Aug 23 22:26:16 2023  
 Quant Method : Z:\pestpcbsrv\HPCHEM1\ECD\_L\methods\PL081523CLP.M  
 Quant Title : GC Extractables  
 QLast Update : Tue Aug 15 05:52:51 2023  
 Response via : Initial Calibration  
 Integrator: ChemStation

Volume Inj. : 1 µl  
 Signal #1 Phase : ZB-MR2 Signal #2 Phase: ZB-MR1  
 Signal #1 Info : 30M x 0.32mm x0.2 Signal #2 Info : 30M x 0.32mm x 0.50µm

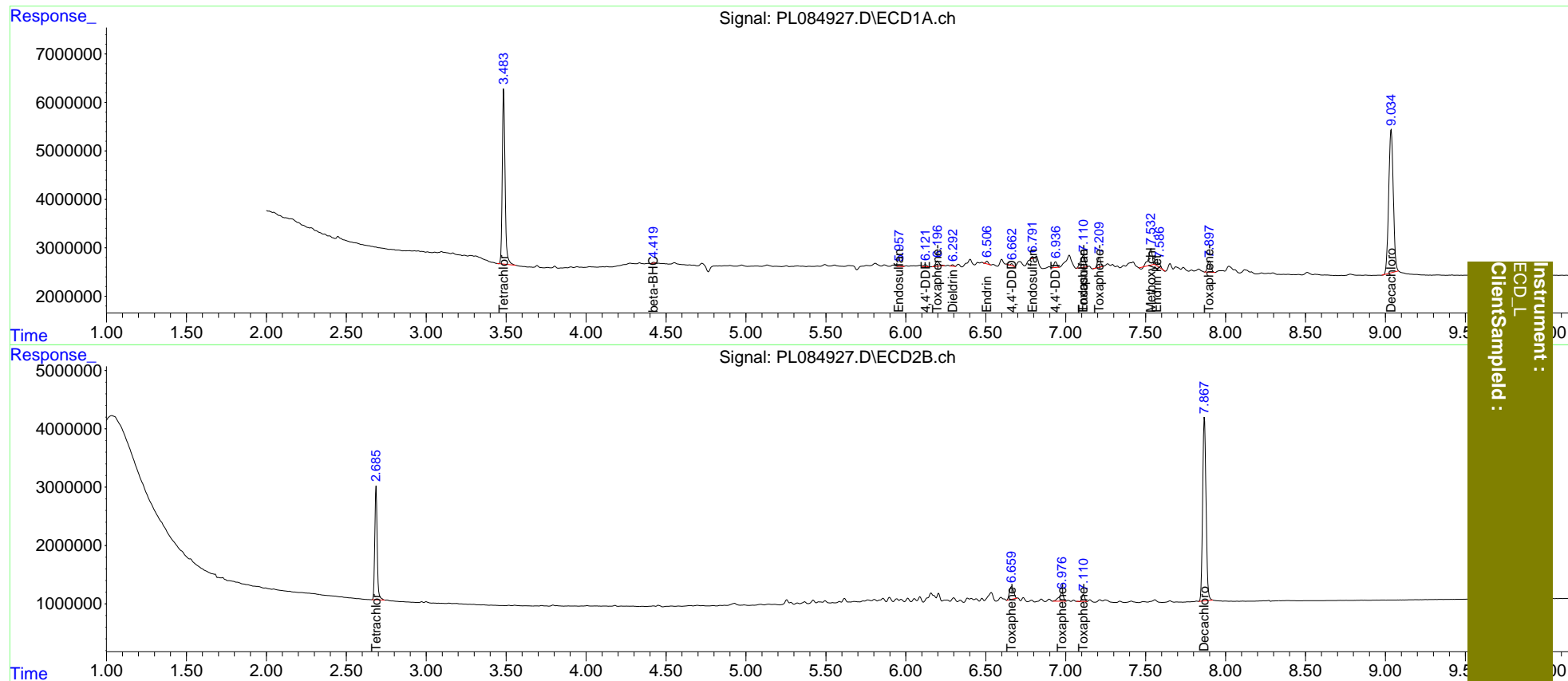
Compound	RT#1	RT#2	Resp#1	Resp#2	ng/ml	ng/ml
-----						
System Monitoring Compounds						
1) SA Tetrachlo...	3.485	2.686	44445809	20627524	17.729	17.474
27) SA Decachlor...	9.036	7.868	59520138	46247088	34.731	34.146
Target Compounds						
2) A alpha-BHC	3.944	0.000	144628	0	<MDL	N.D. #
3) MA gamma-BHC...	4.276	0.000	186083	0	<MDL	N.D. #
5) MB Aldrin	5.253f	0.000	164890	0	<MDL	N.D. #
6) B beta-BHC	4.422f	0.000	232531	0	0.132	N.D. #
7) B delta-BHC	4.726	0.000	360181	0	<MDL	N.D. #
8) B Heptachlo...	5.645	0.000	55098	0	<MDL	N.D. #
9) A Endosulfan I	5.960f	0.000	311346	0	0.109	N.D. #
10) B trans-Chl...	5.866	0.000	275828	0	<MDL	N.D. #
11) B cis-Chlor...	5.960	0.000	311346	0	<MDL	N.D. #
12) B 4,4'-DDE	6.123	0.000	636530	0	0.241	N.D. #
13) MA Dieldrin	6.293	0.000	334934	0	0.117	N.D. #
14) MA Endrin	6.508	0.000	604186	0	0.265	N.D. #
15) B Endosulfa...	6.792f	0.000	344254	0	0.146	N.D. #
16) A 4,4'-DDD	6.662	0.000	368384	0	0.195	N.D. #
17) MA 4,4'-DDT	6.938f	0.000	1536392	0	0.797	N.D. #
18) B Endrin al...	6.897	0.000	27744	0	<MDL	N.D. #
19) B Endosulfa...	7.111	0.000	4720855	0	2.134	N.D. #
20) A Methoxychlor	7.533f	0.000	5198232	0	5.358	N.D. #
21) B Endrin ke...	7.569	0.000	1670061	0	0.761	N.D. #
22) Toxaphene-1	6.198	0.000	1876163	0	91.234	N.D. #
24) Toxaphene-3	7.111	6.661	4720855	3965110	99.540	83.604
25) Toxaphene-4	7.210	6.977	2716418	2767222	99.105	87.093
26) Toxaphene-5	7.898	7.111	3543917	1430495	107.800	75.079 #

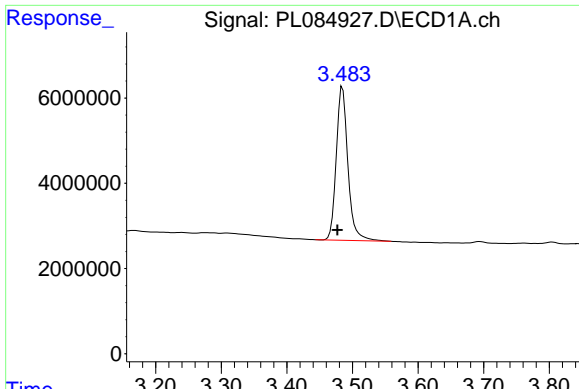
(f)=RT Delta > 1/2 Window (#)=Amounts differ by > 25% (m)=manual int.

Data Path : Z:\pestpcbsrv\HPCHEM1\ECD\_L\Data\PL082323\  
 Data File : PL084927.D  
 Signal(s) : Signal #1: ECD1A.ch Signal #2: ECD2B.ch  
 Acq On : 23 Aug 2023 11:53  
 Operator : AR\AJ  
 Sample : 03573-2  
 Misc : TOX MDL WATER  
 ALS Vial : 5 Sample Multiplier: 1

Integration File signal 1: autoint1.e  
 Integration File signal 2: autoint2.e  
 Quant Time: Aug 23 22:26:16 2023  
 Quant Method : Z:\pestpcbsrv\HPCHEM1\ECD\_L\methods\PL081523CLP.M  
 Quant Title : GC Extractables  
 QLast Update : Tue Aug 15 05:52:51 2023  
 Response via : Initial Calibration  
 Integrator: ChemStation

Volume Inj. : 1 µl  
 Signal #1 Phase : ZB-MR2 Signal #2 Phase: ZB-MR1  
 Signal #1 Info : 30M x 0.32mm x0.2 Signal #2 Info : 30M x 0.32mm x 0.50µm

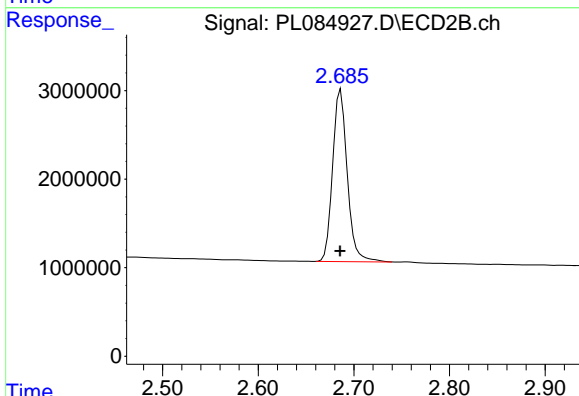




#1 Tetrachloro-m-xylene

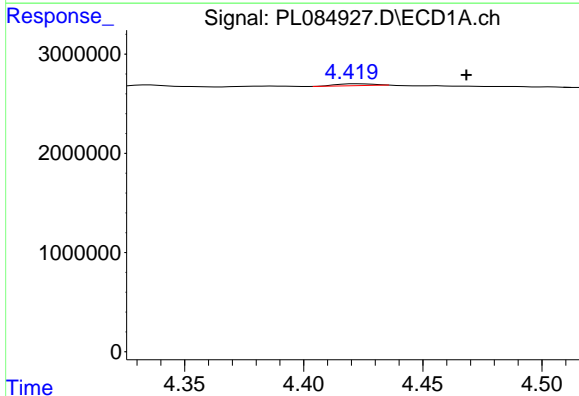
R.T.: 3.485 min  
 Delta R.T.: 0.008 min  
 Response: 44445809  
 Conc: 17.73 ng/ml

Instrument :  
 ECD\_L  
 ClientSampleId :



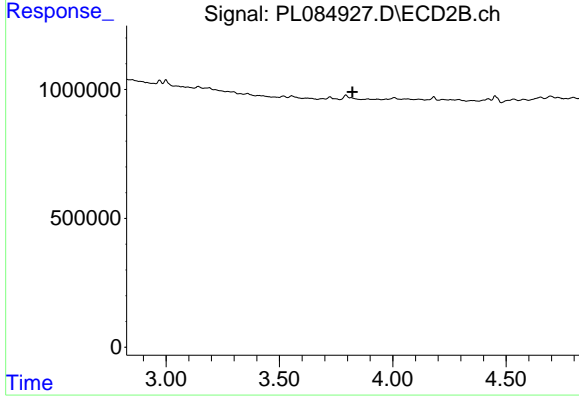
#1 Tetrachloro-m-xylene

R.T.: 2.686 min  
 Delta R.T.: 0.000 min  
 Response: 20627524  
 Conc: 17.47 ng/ml



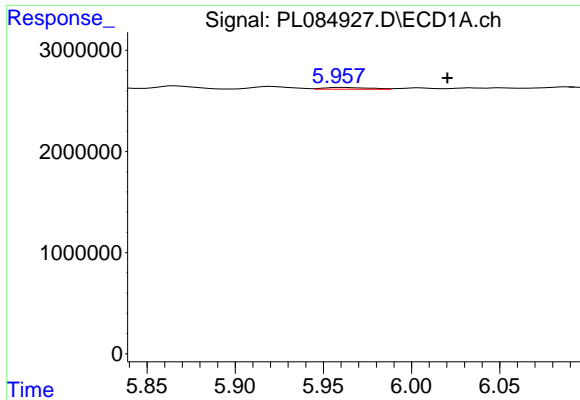
#6 beta-BHC

R.T.: 4.422 min  
 Delta R.T.: -0.046 min  
 Response: 232531  
 Conc: 0.13 ng/ml



#6 beta-BHC

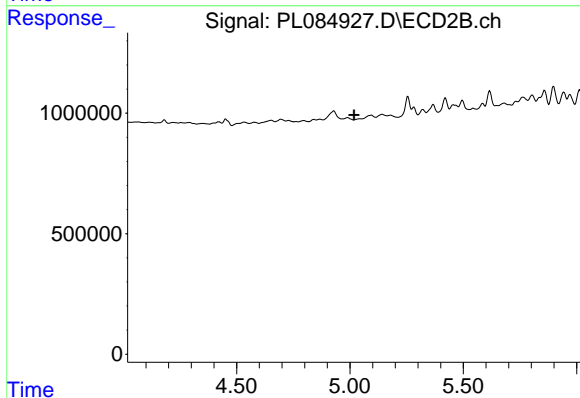
R.T.: 0.000 min  
 Exp R.T. : 3.822 min  
 Response: 0  
 Conc: N.D.



#9 Endosulfan I

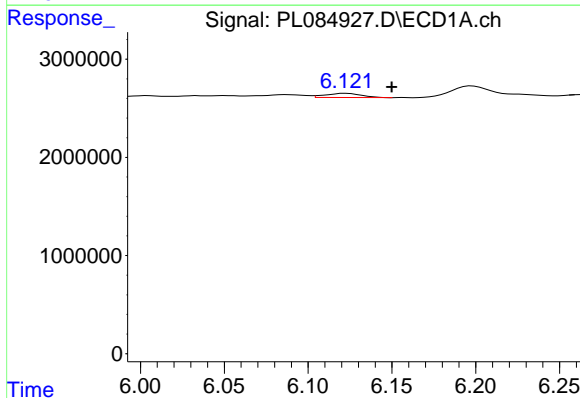
R.T.: 5.960 min  
 Delta R.T.: -0.060 min  
 Response: 311346  
 Conc: 0.11 ng/ml

Instrument :  
 ECD\_L  
 ClientSampleId :



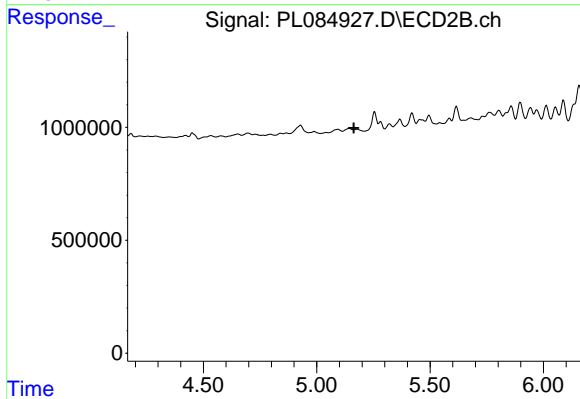
#9 Endosulfan I

R.T.: 0.000 min  
 Exp R.T. : 5.019 min  
 Response: 0  
 Conc: N.D.



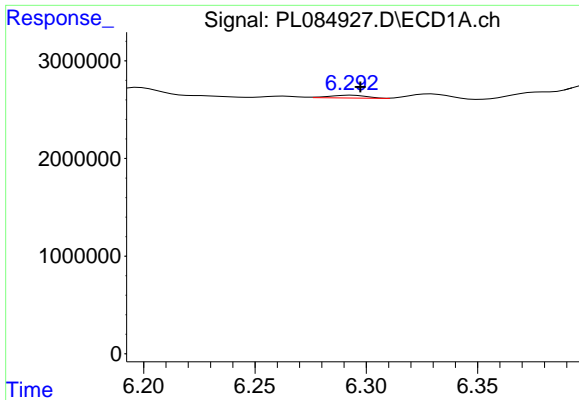
#12 4,4'-DDE

R.T.: 6.123 min  
 Delta R.T.: -0.027 min  
 Response: 636530  
 Conc: 0.24 ng/ml



#12 4,4'-DDE

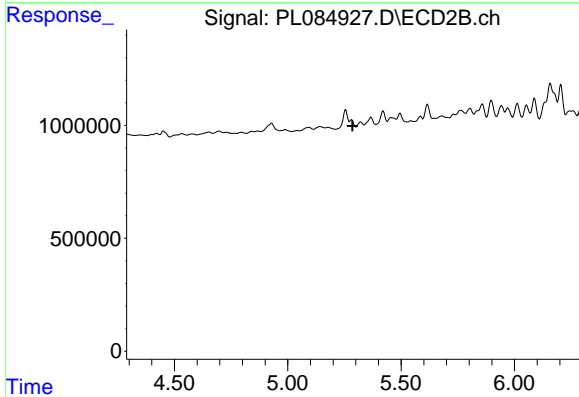
R.T.: 0.000 min  
 Exp R.T. : 5.163 min  
 Response: 0  
 Conc: N.D.



#13 Dieldrin

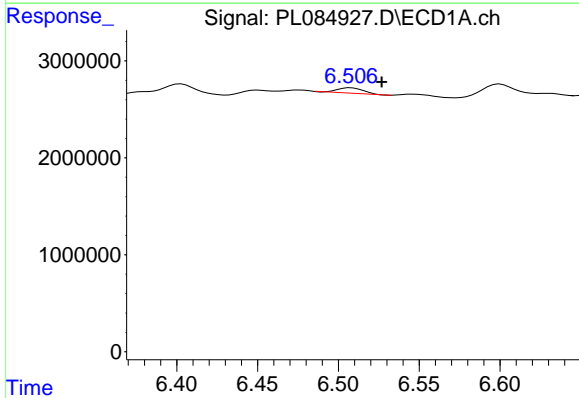
R.T.: 6.293 min  
 Delta R.T.: -0.004 min  
 Response: 334934  
 Conc: 0.12 ng/ml

Instrument :  
 ECD\_L  
 ClientSampleId :



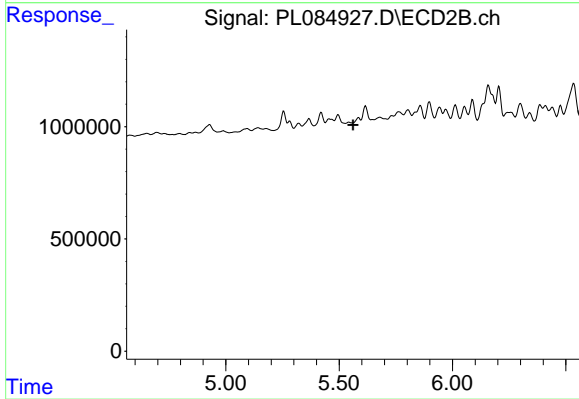
#13 Dieldrin

R.T.: 0.000 min  
 Exp R.T. : 5.286 min  
 Response: 0  
 Conc: N.D.



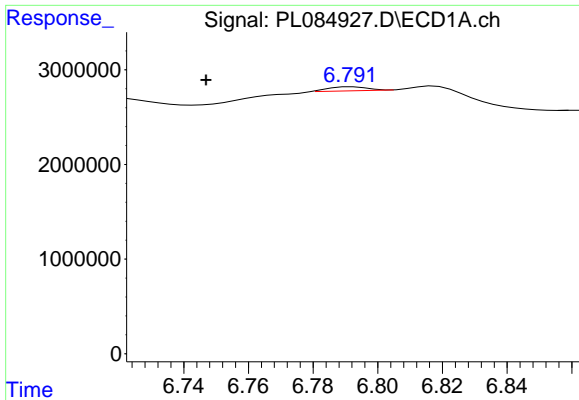
#14 Endrin

R.T.: 6.508 min  
 Delta R.T.: -0.019 min  
 Response: 604186  
 Conc: 0.27 ng/ml



#14 Endrin

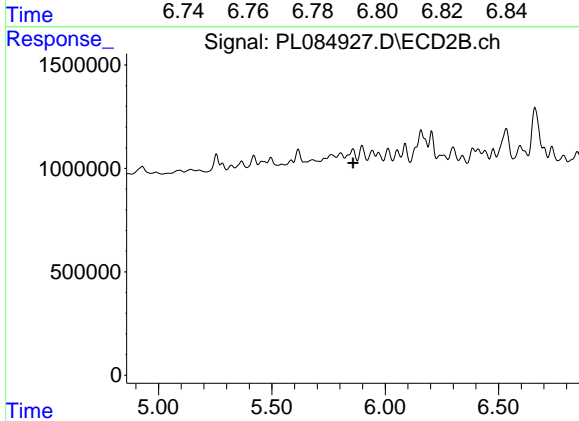
R.T.: 0.000 min  
 Exp R.T. : 5.561 min  
 Response: 0  
 Conc: N.D.



#15 Endosulfan II

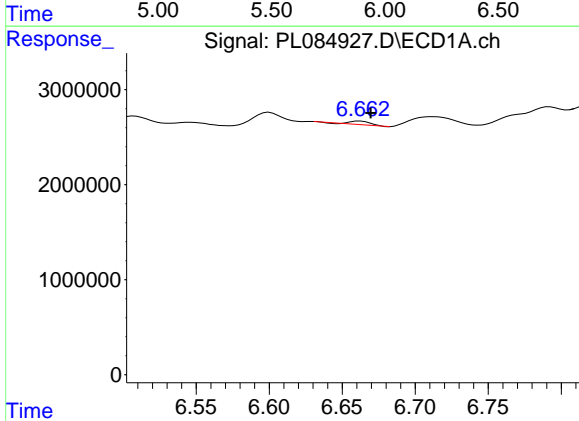
R.T.: 6.792 min  
 Delta R.T.: 0.045 min  
 Response: 344254  
 Conc: 0.15 ng/ml

Instrument :  
 ECD\_L  
 ClientSampleId :



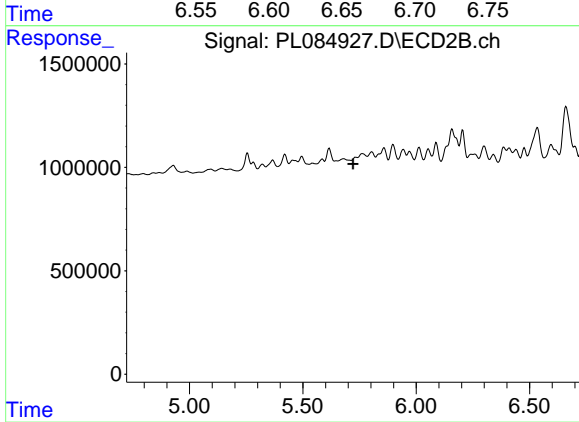
#15 Endosulfan II

R.T.: 0.000 min  
 Exp R.T. : 5.859 min  
 Response: 0  
 Conc: N.D.



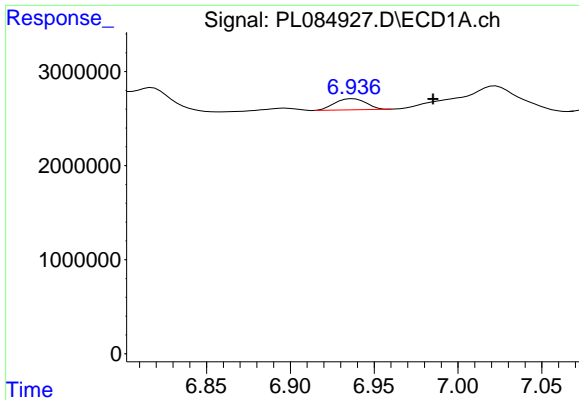
#16 4,4'-DDD

R.T.: 6.662 min  
 Delta R.T.: -0.007 min  
 Response: 368384  
 Conc: 0.19 ng/ml



#16 4,4'-DDD

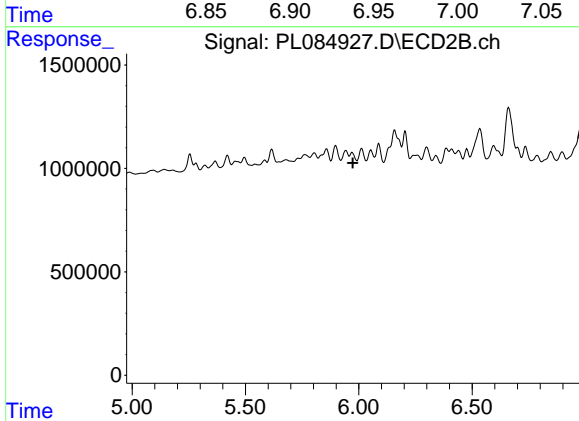
R.T.: 0.000 min  
 Exp R.T. : 5.722 min  
 Response: 0  
 Conc: N.D.



#17 4,4'-DDT

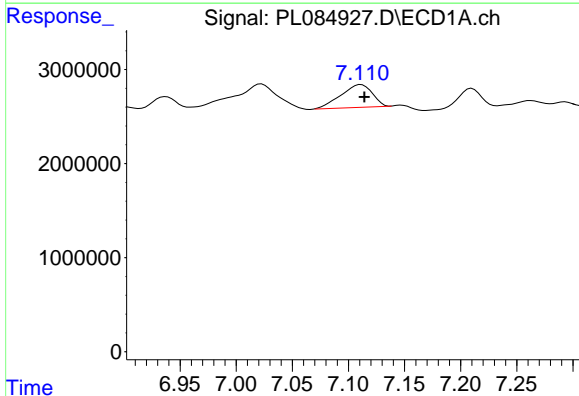
R.T.: 6.938 min  
 Delta R.T.: -0.047 min  
 Response: 1536392  
 Conc: 0.80 ng/ml

Instrument :  
 ECD\_L  
 ClientSampleId :



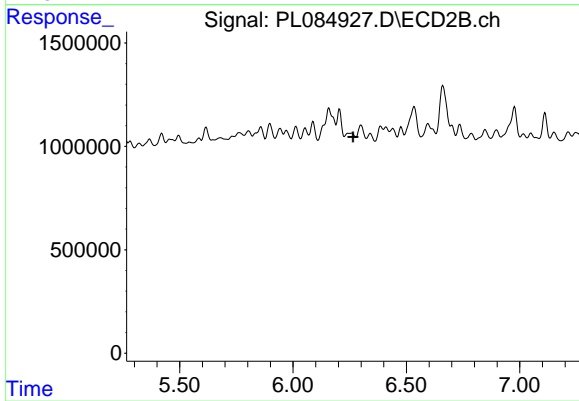
#17 4,4'-DDT

R.T.: 0.000 min  
 Exp R.T. : 5.974 min  
 Response: 0  
 Conc: N.D.



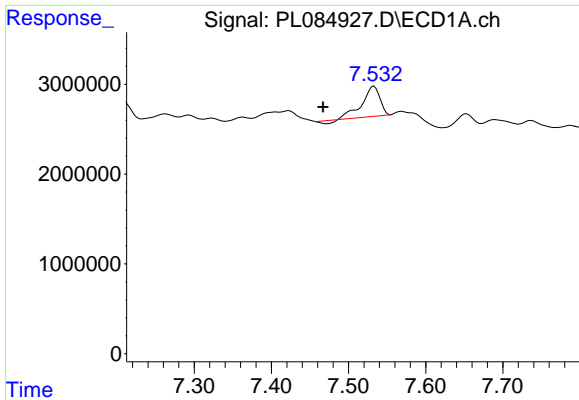
#19 Endosulfan Sulfate

R.T.: 7.111 min  
 Delta R.T.: -0.003 min  
 Response: 4720855  
 Conc: 2.13 ng/ml



#19 Endosulfan Sulfate

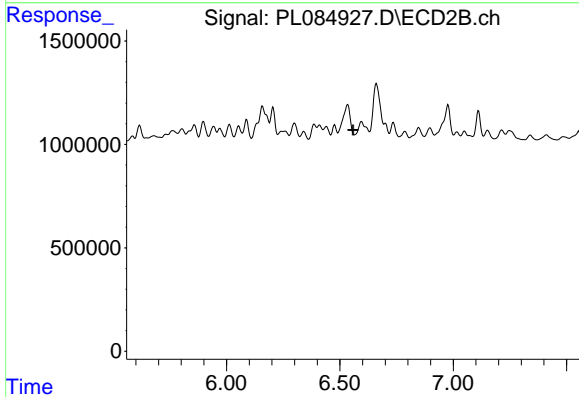
R.T.: 0.000 min  
 Exp R.T. : 6.265 min  
 Response: 0  
 Conc: N.D.



#20 Methoxychlor

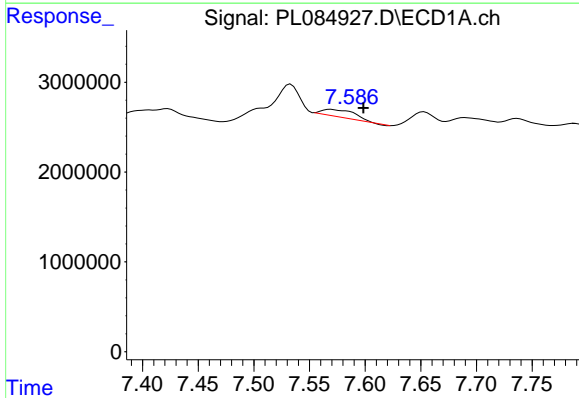
R.T.: 7.533 min  
 Delta R.T.: 0.066 min  
 Response: 5198232  
 Conc: 5.36 ng/ml

Instrument :  
 ECD\_L  
 ClientSampleId :



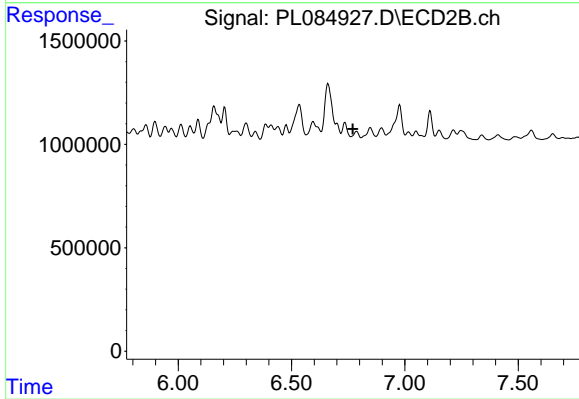
#20 Methoxychlor

R.T.: 0.000 min  
 Exp R.T. : 6.559 min  
 Response: 0  
 Conc: N.D.



#21 Endrin ketone

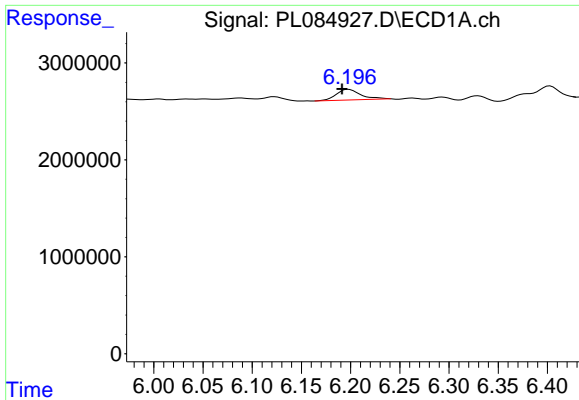
R.T.: 7.569 min  
 Delta R.T.: -0.029 min  
 Response: 1670061  
 Conc: 0.76 ng/ml



#21 Endrin ketone

R.T.: 0.000 min  
 Exp R.T. : 6.770 min  
 Response: 0  
 Conc: N.D.

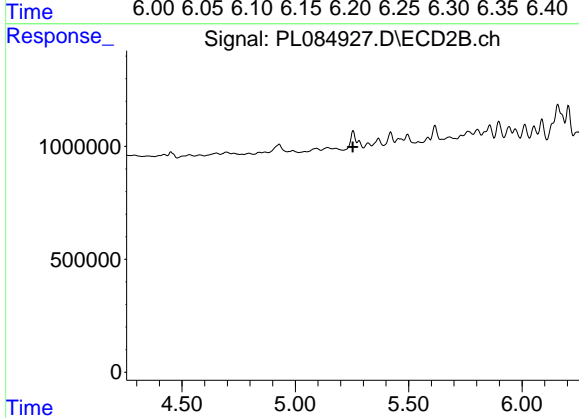




#22 Toxaphene-1

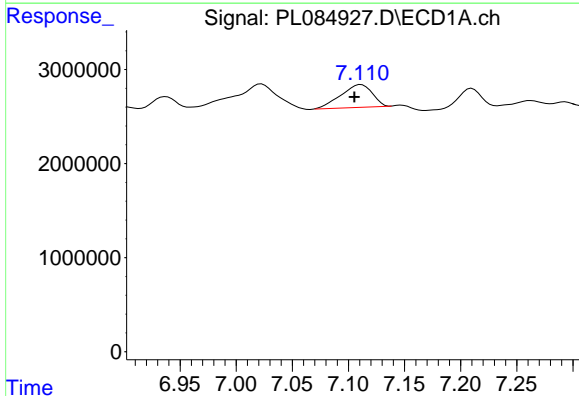
R.T.: 6.198 min  
 Delta R.T.: 0.007 min  
 Response: 1876163  
 Conc: 91.23 ng/ml

Instrument :  
 ECD\_L  
 ClientSampleId :



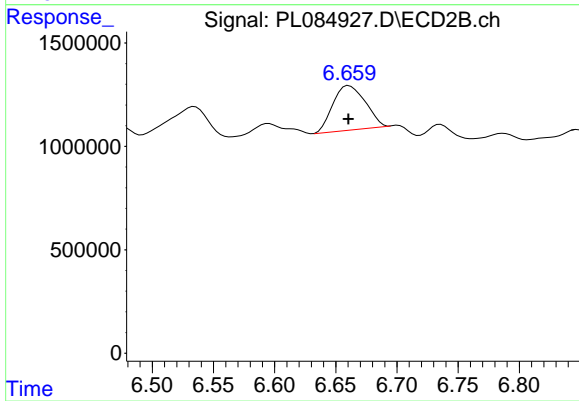
#22 Toxaphene-1

R.T.: 0.000 min  
 Exp R.T. : 5.254 min  
 Response: 0  
 Conc: N.D.



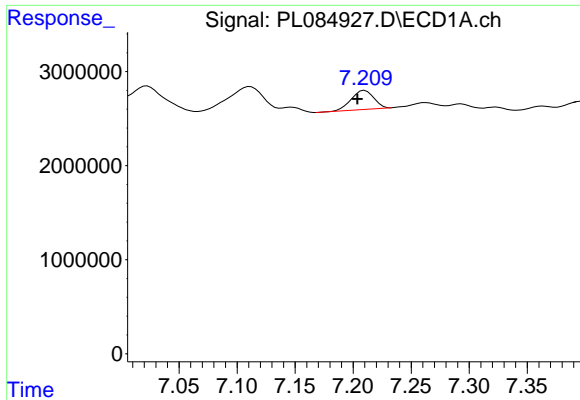
#24 Toxaphene-3

R.T.: 7.111 min  
 Delta R.T.: 0.006 min  
 Response: 4720855  
 Conc: 99.54 ng/ml



#24 Toxaphene-3

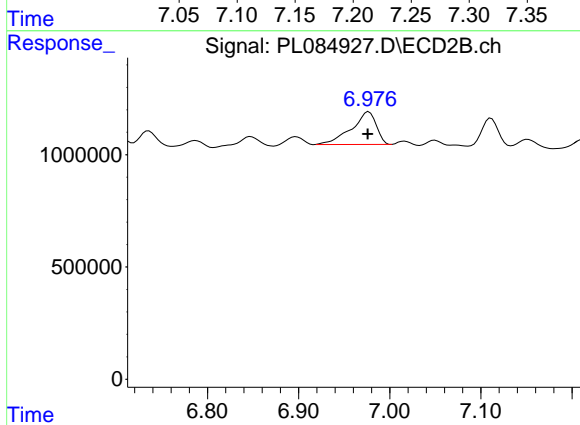
R.T.: 6.661 min  
 Delta R.T.: 0.000 min  
 Response: 3965110  
 Conc: 83.60 ng/ml



#25 Toxaphene-4

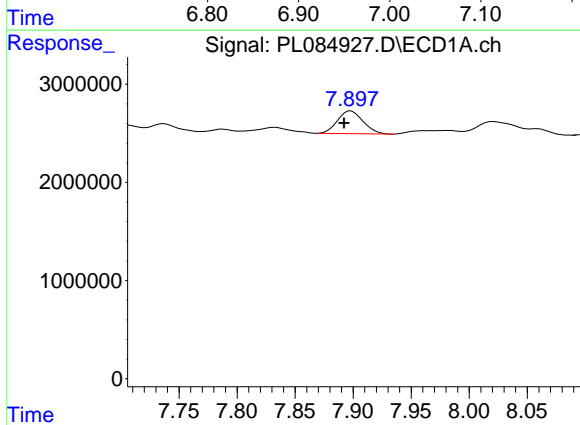
R.T.: 7.210 min  
 Delta R.T.: 0.006 min  
 Response: 2716418  
 Conc: 99.10 ng/ml

Instrument :  
 ECD\_L  
 ClientSampleId :



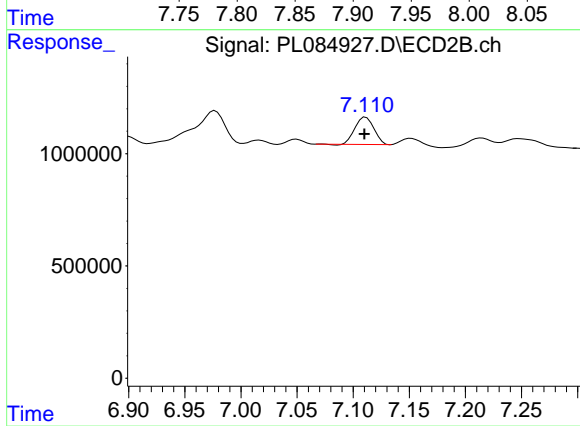
#25 Toxaphene-4

R.T.: 6.977 min  
 Delta R.T.: 0.001 min  
 Response: 2767222  
 Conc: 87.09 ng/ml



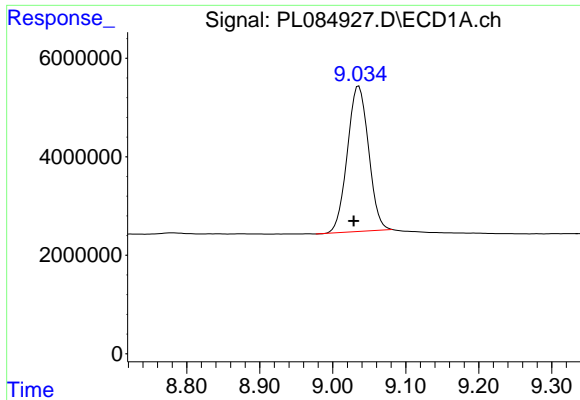
#26 Toxaphene-5

R.T.: 7.898 min  
 Delta R.T.: 0.006 min  
 Response: 3543917  
 Conc: 107.80 ng/ml



#26 Toxaphene-5

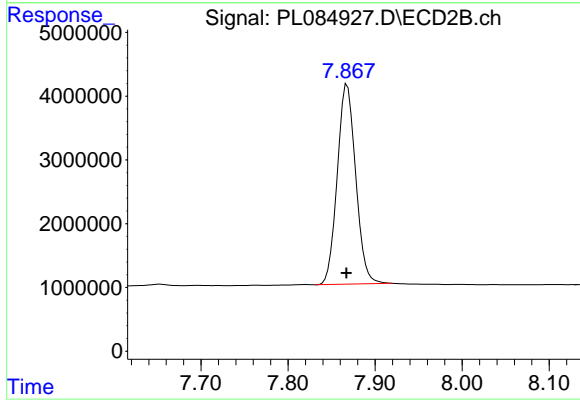
R.T.: 7.111 min  
 Delta R.T.: 0.001 min  
 Response: 1430495  
 Conc: 75.08 ng/ml



#27 Decachlorobiphenyl

R.T.: 9.036 min  
Delta R.T.: 0.007 min  
Response: 59520138  
Conc: 34.73 ng/ml

Instrument :  
ECD\_L  
ClientSampleId :



#27 Decachlorobiphenyl

R.T.: 7.868 min  
Delta R.T.: 0.000 min  
Response: 46247088  
Conc: 34.15 ng/ml