

Data Path : Z:\pestpcbsrv\HPCHEM1\ECD_L\Data\PL082323\
 Data File : PL084942.D
 Signal(s) : Signal #1: ECD1A.ch Signal #2: ECD2B.ch
 Acq On : 23 Aug 2023 18:30
 Operator : AR\AJ
 Sample : 04105-08
 Misc :
 ALS Vial : 18 Sample Multiplier: 1

Instrument :
 ECD_L
 ClientSampleId :

Integration File signal 1: autoint1.e
 Integration File signal 2: autoint2.e
 Quant Time: Aug 23 22:32:17 2023
 Quant Method : Z:\pestpcbsrv\HPCHEM1\ECD_L\methods\PL081523CLP.M
 Quant Title : GC Extractables
 QLast Update : Tue Aug 15 05:52:51 2023
 Response via : Initial Calibration
 Integrator: ChemStation

Volume Inj. : 1 µl
 Signal #1 Phase : ZB-MR2 Signal #2 Phase: ZB-MR1
 Signal #1 Info : 30M x 0.32mm x0.2 Signal #2 Info : 30M x 0.32mm x 0.50µm

	Compound	RT#1	RT#2	Resp#1	Resp#2	ng/ml	ng/ml

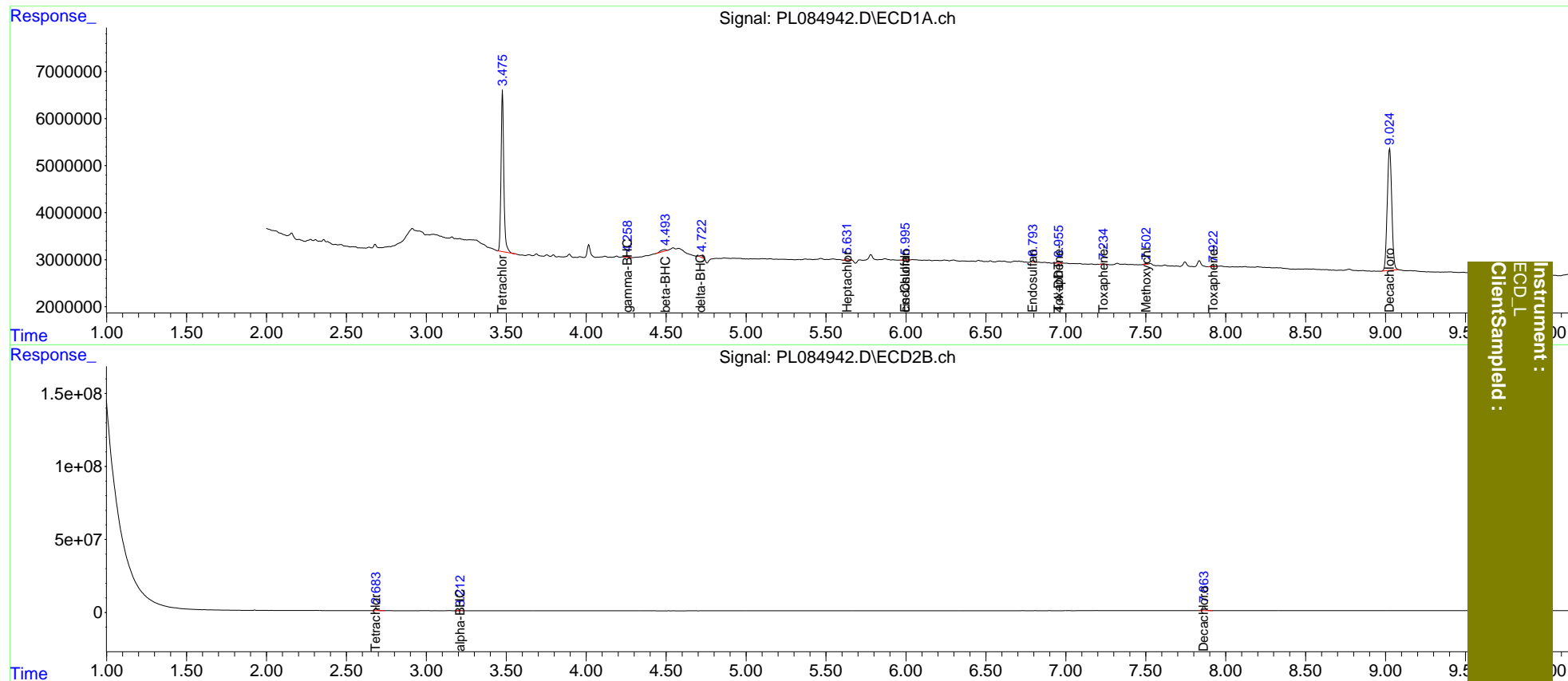
System Monitoring Compounds							
1)	SA Tetrachlo...	3.477	2.685	42086888	20515806	16.788	17.379
2)	SA Decachlor...	9.026	7.864	51011202	40726009	29.766	30.069
Target Compounds							
2)	A alpha-BHC	3.961f	3.213	205709	1092292	<MDL	0.644 #
3)	MA gamma-BHC...	4.260	0.000	346730	0	0.100	N.D. #
6)	B beta-BHC	4.494f	0.000	827725	0	0.469	N.D. #
7)	B delta-BHC	4.718	0.000	501564	0	0.137	N.D. #
8)	B Heptachlo...	5.632	0.000	566228	0	0.170	N.D. #
9)	A Endosulfan I	5.997	0.000	412021	0	0.145	N.D. #
10)	B trans-Chl...	5.869	0.000	307521	0	<MDL	N.D. #
11)	B cis-Chlor...	5.997	0.000	412021	0	0.129	N.D. #
13)	MA Dieldrin	6.299	0.000	203464	0	<MDL	N.D. #
14)	MA Endrin	6.528	0.000	171543	0	<MDL	N.D. #
15)	B Endosulfa...	6.795f	0.000	417995	0	0.178	N.D. #
16)	A 4,4'-DDD	6.679	0.000	72731	0	<MDL	N.D. #
17)	MA 4,4'-DDT	6.956	0.000	592167	0	0.307	N.D. #
20)	A Methoxychlor	7.504f	0.000	187136	0	0.193	N.D. #
21)	B Endrin ke...	7.621	0.000	136995	0	<MDL	N.D. #
23)	Toxaphene-2	6.956f	0.000	592167	0	8.910	N.D. #
25)	Toxaphene-4	7.236	0.000	168731	0	6.156	N.D. #
26)	Toxaphene-5	7.924	0.000	189245	0	5.757	N.D. #

(f)=RT Delta > 1/2 Window (#)=Amounts differ by > 25% (m)=manual int.

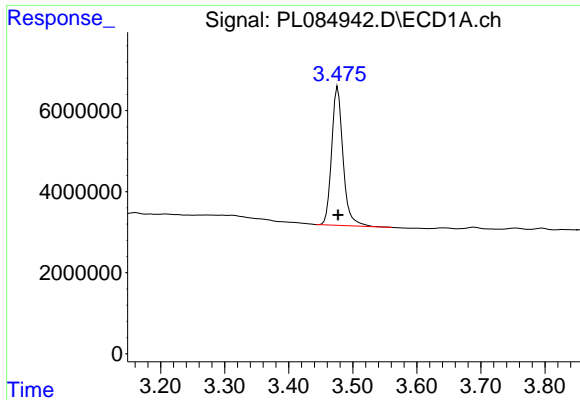
Data Path : Z:\pestpcbsrv\HPCHEM1\ECD_L\Data\PL082323\
 Data File : PL084942.D
 Signal(s) : Signal #1: ECD1A.ch Signal #2: ECD2B.ch
 Acq On : 23 Aug 2023 18:30
 Operator : AR\AJ
 Sample : 04105-08
 Misc :
 ALS Vial : 18 Sample Multiplier: 1

Integration File signal 1: autoint1.e
 Integration File signal 2: autoint2.e
 Quant Time: Aug 23 22:32:17 2023
 Quant Method : Z:\pestpcbsrv\HPCHEM1\ECD_L\methods\PL081523CLP.M
 Quant Title : GC Extractables
 QLast Update : Tue Aug 15 05:52:51 2023
 Response via : Initial Calibration
 Integrator: ChemStation

Volume Inj. : 1 µl
 Signal #1 Phase : ZB-MR2 Signal #2 Phase: ZB-MR1
 Signal #1 Info : 30M x 0.32mm x0.2 Signal #2 Info : 30M x 0.32mm x 0.50µm



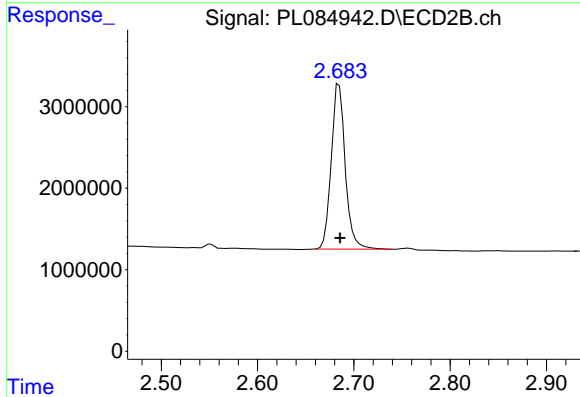
Instrument : ECD_L
 Client/Sample :



#1 Tetrachloro-m-xylene

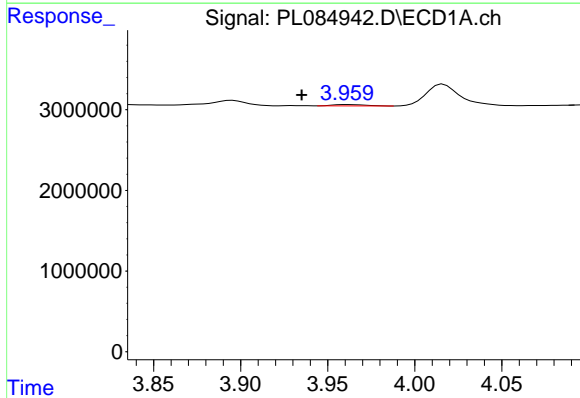
R.T.: 3.477 min
 Delta R.T.: 0.000 min
 Response: 42086888
 Conc: 16.79 ng/ml

Instrument :
 ECD_L
 ClientSampleId :



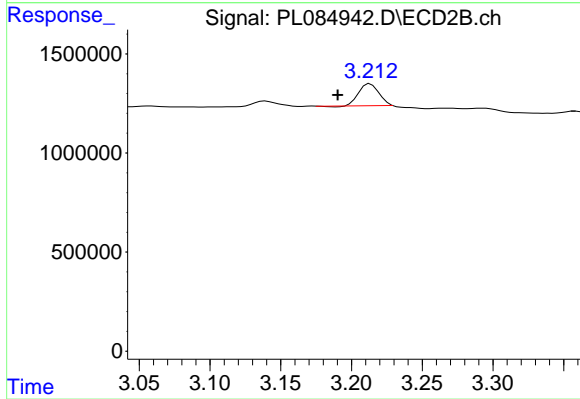
#1 Tetrachloro-m-xylene

R.T.: 2.685 min
 Delta R.T.: 0.000 min
 Response: 20515806
 Conc: 17.38 ng/ml



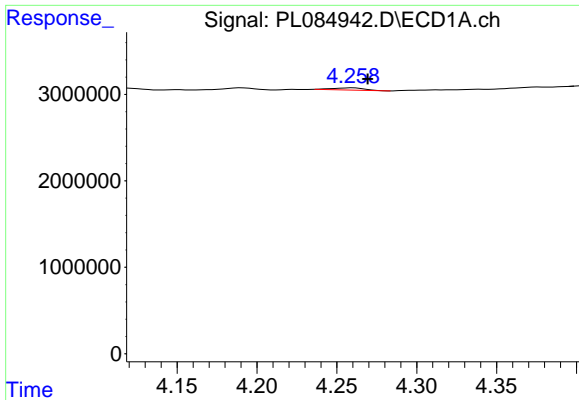
#2 alpha-BHC

R.T.: 3.961 min
 Delta R.T.: 0.026 min
 Response: 205709
 Conc: N.D.



#2 alpha-BHC

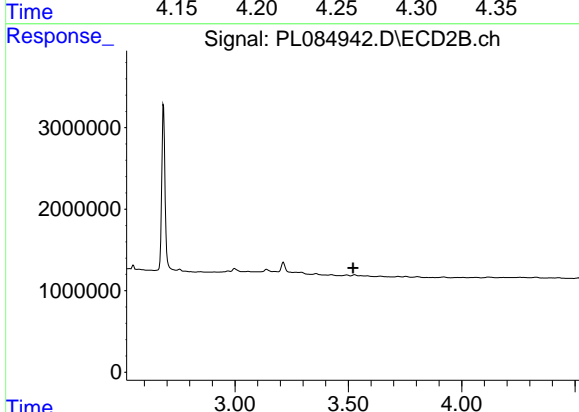
R.T.: 3.213 min
 Delta R.T.: 0.023 min
 Response: 1092292
 Conc: 0.64 ng/ml



#3 gamma-BHC (Lindane)

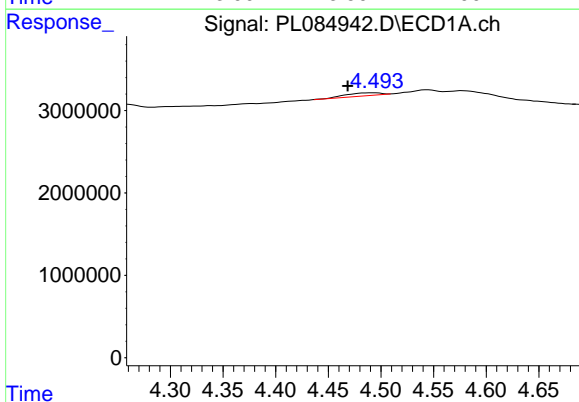
R.T.: 4.260 min
 Delta R.T.: -0.010 min
 Response: 346730
 Conc: 0.10 ng/ml

Instrument :
 ECD_L
 ClientSampleId :



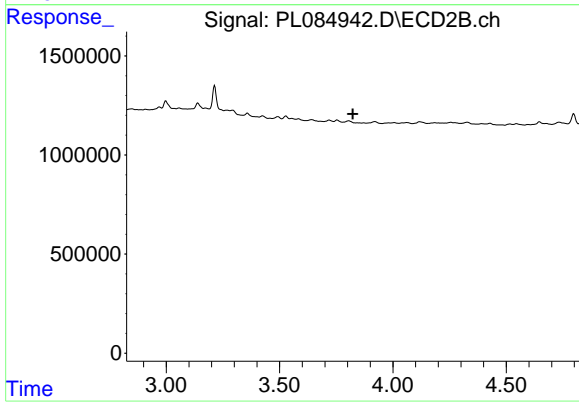
#3 gamma-BHC (Lindane)

R.T.: 0.000 min
 Exp R.T. : 3.521 min
 Response: 0
 Conc: N.D.



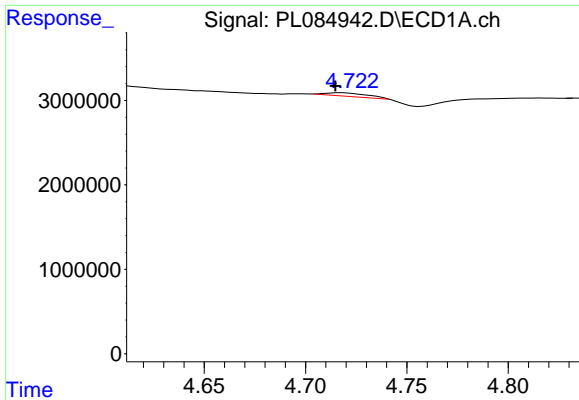
#6 beta-BHC

R.T.: 4.494 min
 Delta R.T.: 0.025 min
 Response: 827725
 Conc: 0.47 ng/ml



#6 beta-BHC

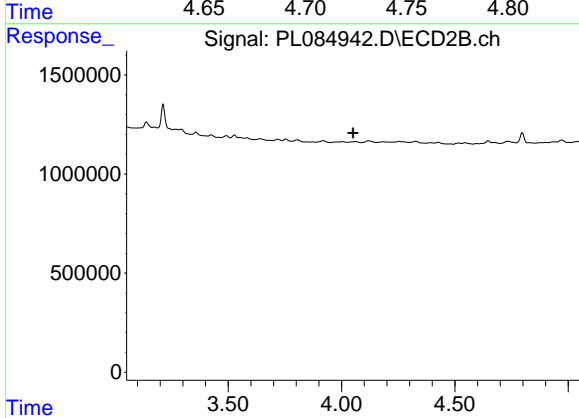
R.T.: 0.000 min
 Exp R.T. : 3.822 min
 Response: 0
 Conc: N.D.



#7 delta-BHC

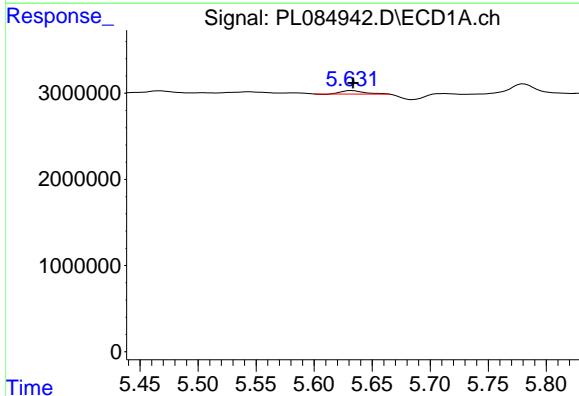
R.T.: 4.718 min
 Delta R.T.: 0.003 min
 Response: 501564
 Conc: 0.14 ng/ml

Instrument :
 ECD_L
 ClientSampleId :



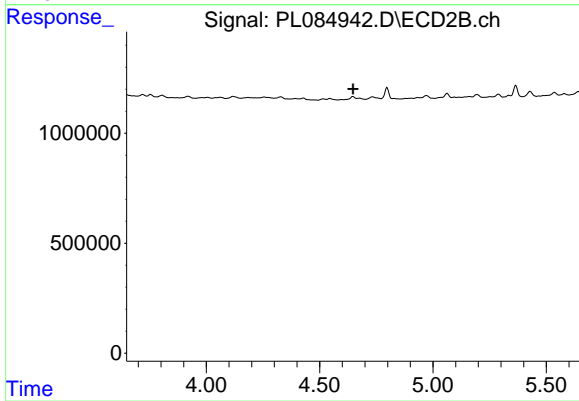
#7 delta-BHC

R.T.: 0.000 min
 Exp R.T. : 4.051 min
 Response: 0
 Conc: N.D.



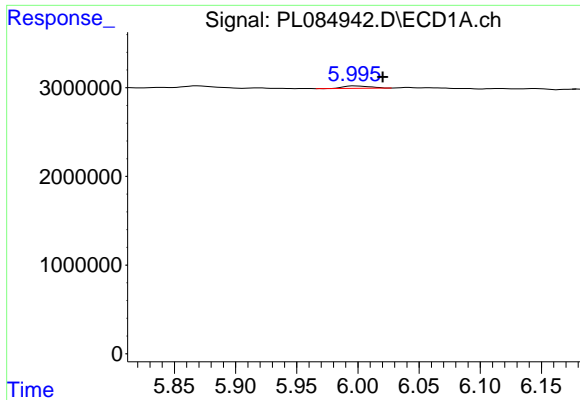
#8 Heptachlor epoxide

R.T.: 5.632 min
 Delta R.T.: -0.002 min
 Response: 566228
 Conc: 0.17 ng/ml



#8 Heptachlor epoxide

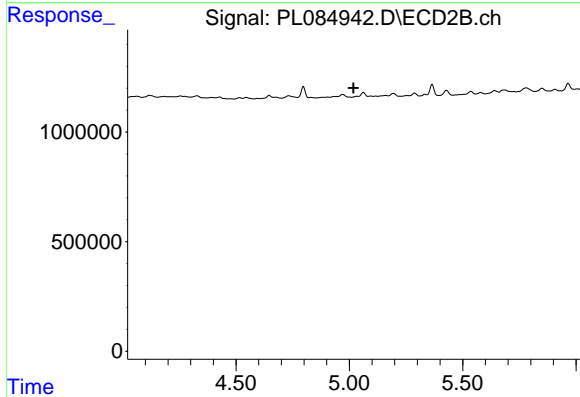
R.T.: 0.000 min
 Exp R.T. : 4.648 min
 Response: 0
 Conc: N.D.



#9 Endosulfan I

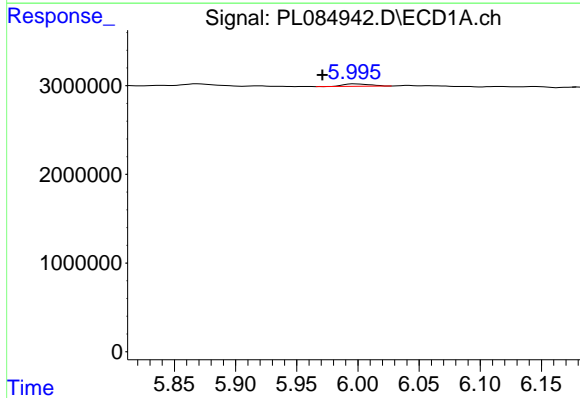
R.T.: 5.997 min
 Delta R.T.: -0.024 min
 Response: 412021
 Conc: 0.14 ng/ml

Instrument :
 ECD_L
 ClientSampleId :



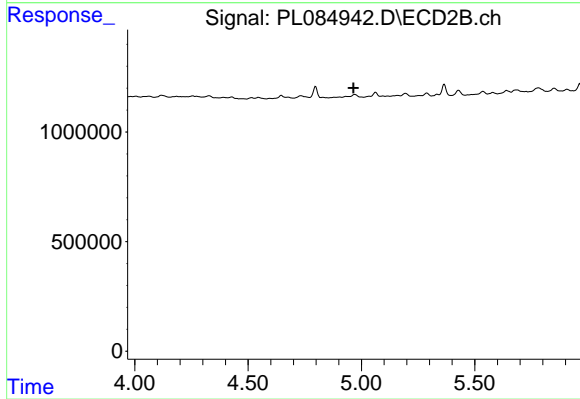
#9 Endosulfan I

R.T.: 0.000 min
 Exp R.T. : 5.019 min
 Response: 0
 Conc: N.D.



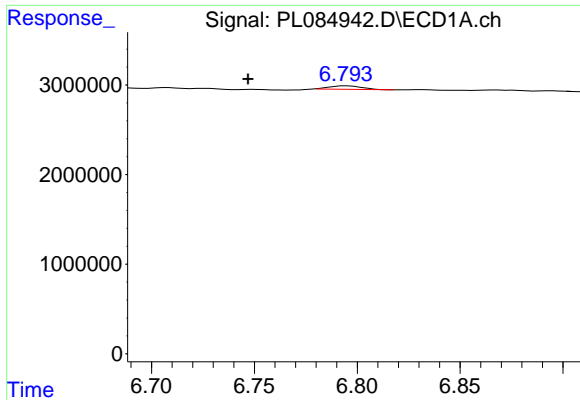
#11 cis-Chlordane

R.T.: 5.997 min
 Delta R.T.: 0.026 min
 Response: 412021
 Conc: 0.13 ng/ml



#11 cis-Chlordane

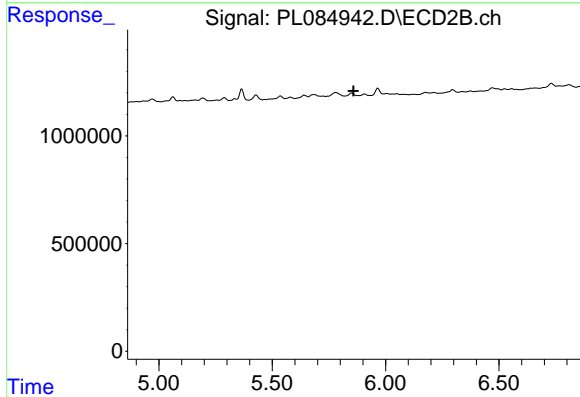
R.T.: 0.000 min
 Exp R.T. : 4.965 min
 Response: 0
 Conc: N.D.



#15 Endosulfan II

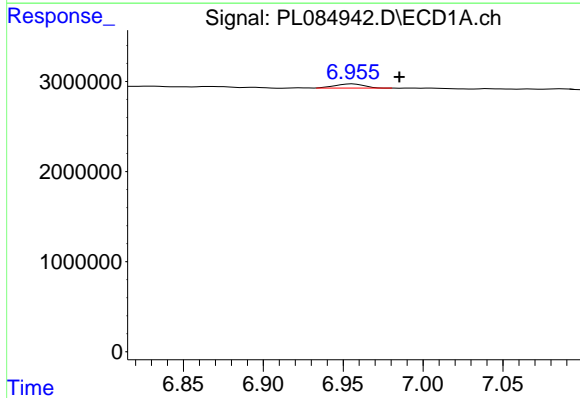
R.T.: 6.795 min
 Delta R.T.: 0.048 min
 Response: 417995
 Conc: 0.18 ng/ml

Instrument :
 ECD_L
 ClientSampleId :



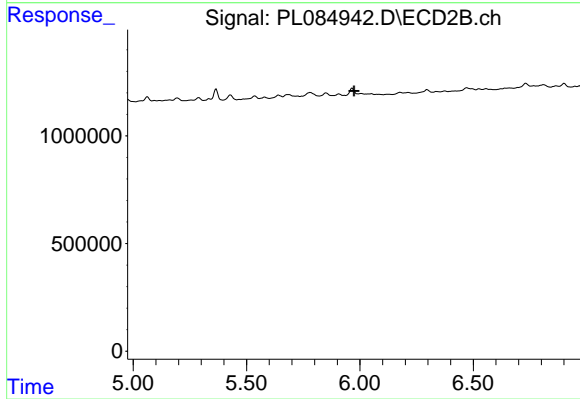
#15 Endosulfan II

R.T.: 0.000 min
 Exp R.T. : 5.859 min
 Response: 0
 Conc: N.D.



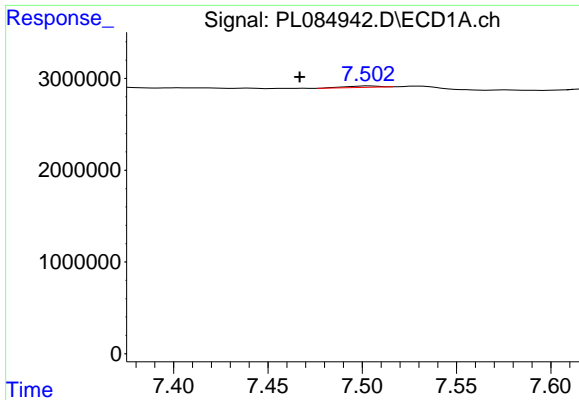
#17 4,4'-DDT

R.T.: 6.956 min
 Delta R.T.: -0.029 min
 Response: 592167
 Conc: 0.31 ng/ml



#17 4,4'-DDT

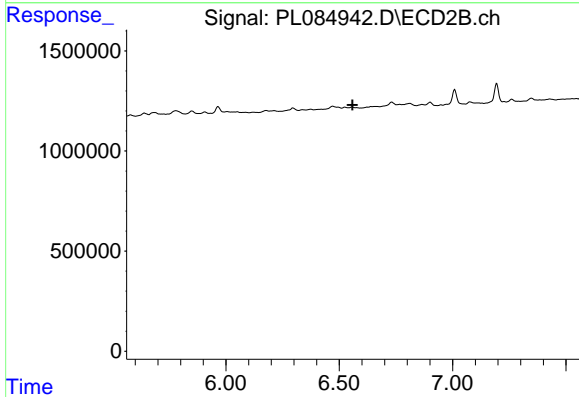
R.T.: 0.000 min
 Exp R.T. : 5.974 min
 Response: 0
 Conc: N.D.



#20 Methoxychlor

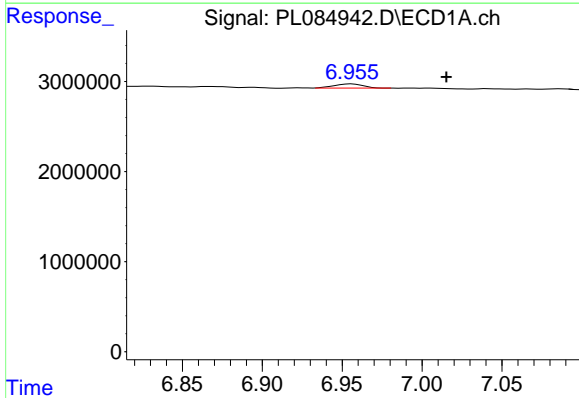
R.T.: 7.504 min
 Delta R.T.: 0.037 min
 Response: 187136
 Conc: 0.19 ng/ml

Instrument :
 ECD_L
 ClientSampleId :



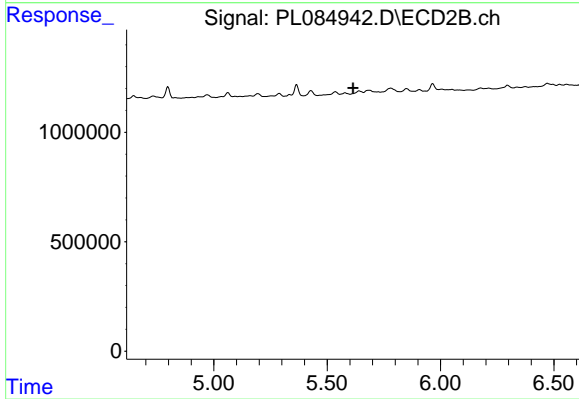
#20 Methoxychlor

R.T.: 0.000 min
 Exp R.T. : 6.559 min
 Response: 0
 Conc: N.D.



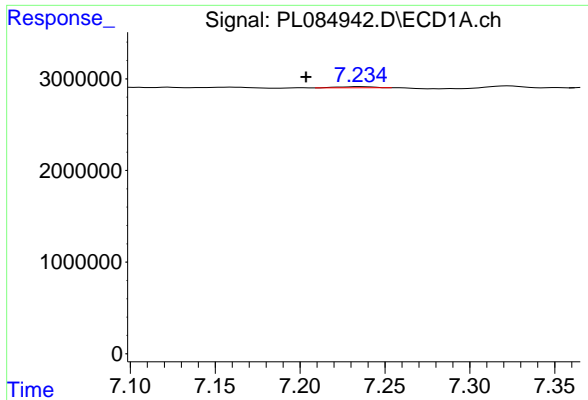
#23 Toxaphene-2

R.T.: 6.956 min
 Delta R.T.: -0.059 min
 Response: 592167
 Conc: 8.91 ng/ml



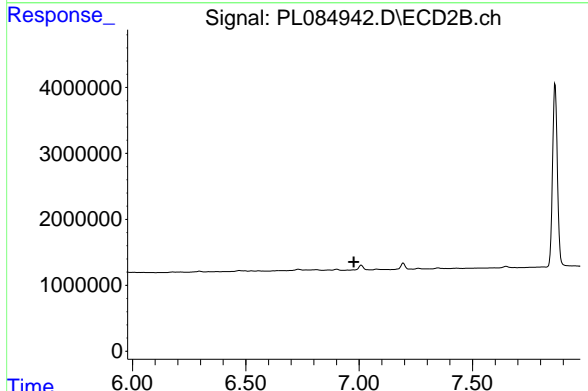
#23 Toxaphene-2

R.T.: 0.000 min
 Exp R.T. : 5.615 min
 Response: 0
 Conc: N.D.

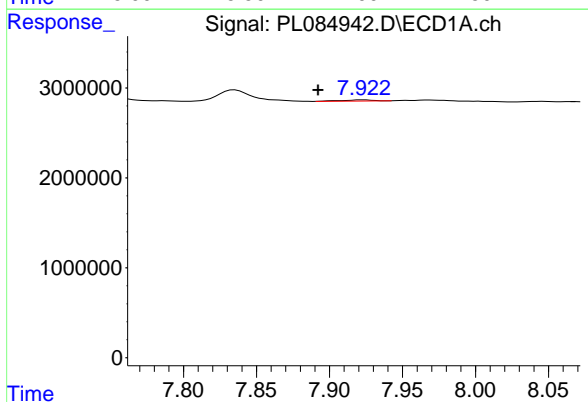


#25 Toxaphene-4
 R.T.: 7.236 min
 Delta R.T.: 0.032 min
 Response: 168731
 Conc: 6.16 ng/ml

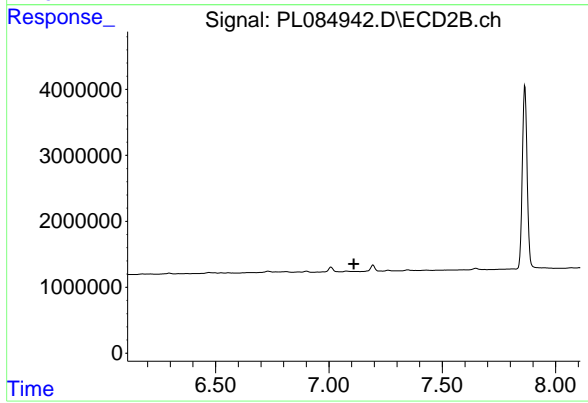
Instrument :
 ECD_L
 ClientSampleId :



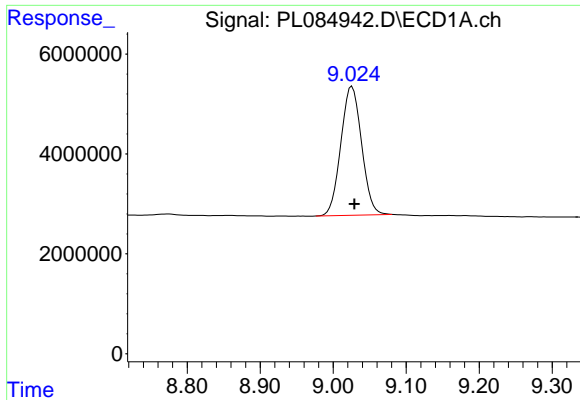
#25 Toxaphene-4
 R.T.: 0.000 min
 Exp R.T. : 6.976 min
 Response: 0
 Conc: N.D.



#26 Toxaphene-5
 R.T.: 7.924 min
 Delta R.T.: 0.031 min
 Response: 189245
 Conc: 5.76 ng/ml



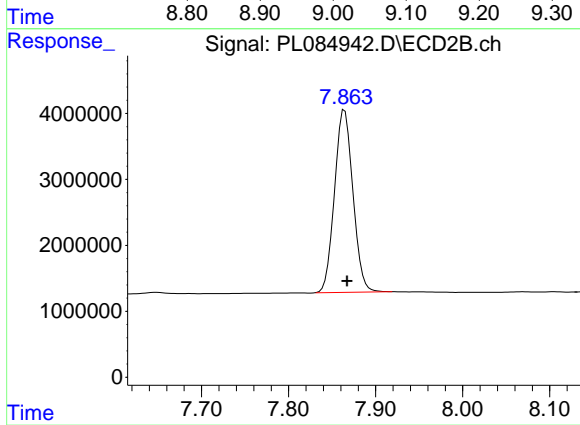
#26 Toxaphene-5
 R.T.: 0.000 min
 Exp R.T. : 7.110 min
 Response: 0
 Conc: N.D.



#27 Decachlorobiphenyl

R.T.: 9.026 min
Delta R.T.: -0.003 min
Response: 51011202
Conc: 29.77 ng/ml

Instrument :
ECD_L
ClientSampleId :



#27 Decachlorobiphenyl

R.T.: 7.864 min
Delta R.T.: -0.003 min
Response: 40726009
Conc: 30.07 ng/ml