

Data Path : Z:\pestpcbsrv\HPCHEM1\ECD\_L\Data\PL082323\  
 Data File : PL084954.D  
 Signal(s) : Signal #1: ECD1A.ch Signal #2: ECD2B.ch  
 Acq On : 23 Aug 2023 21:17  
 Operator : AR\AJ  
 Sample : 04105-18  
 Misc :  
 ALS Vial : 28 Sample Multiplier: 1

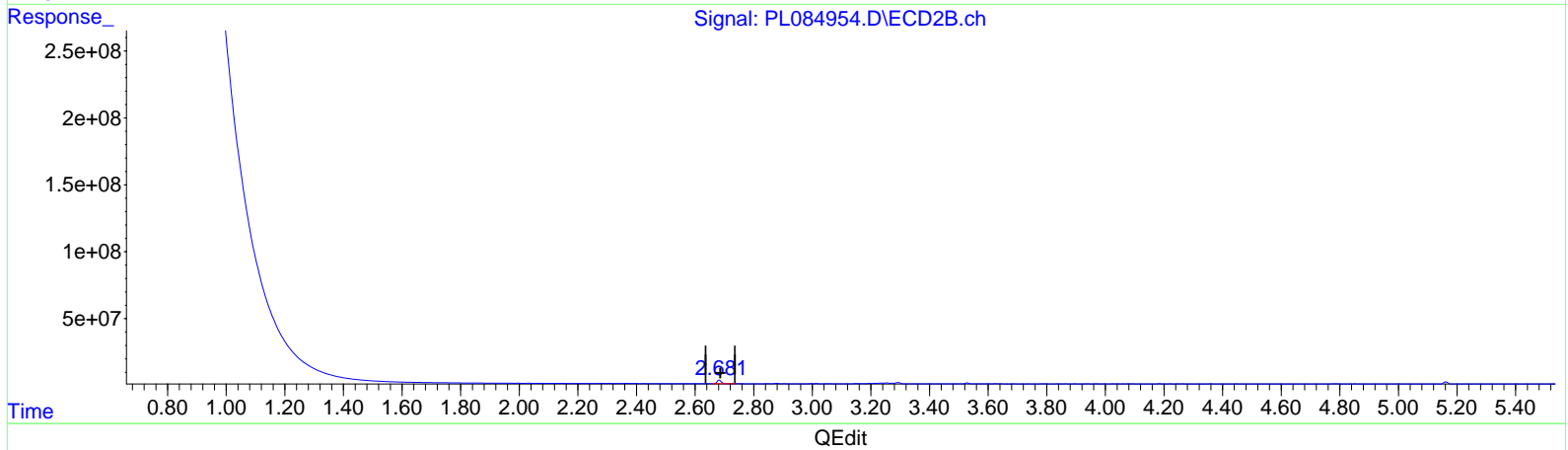
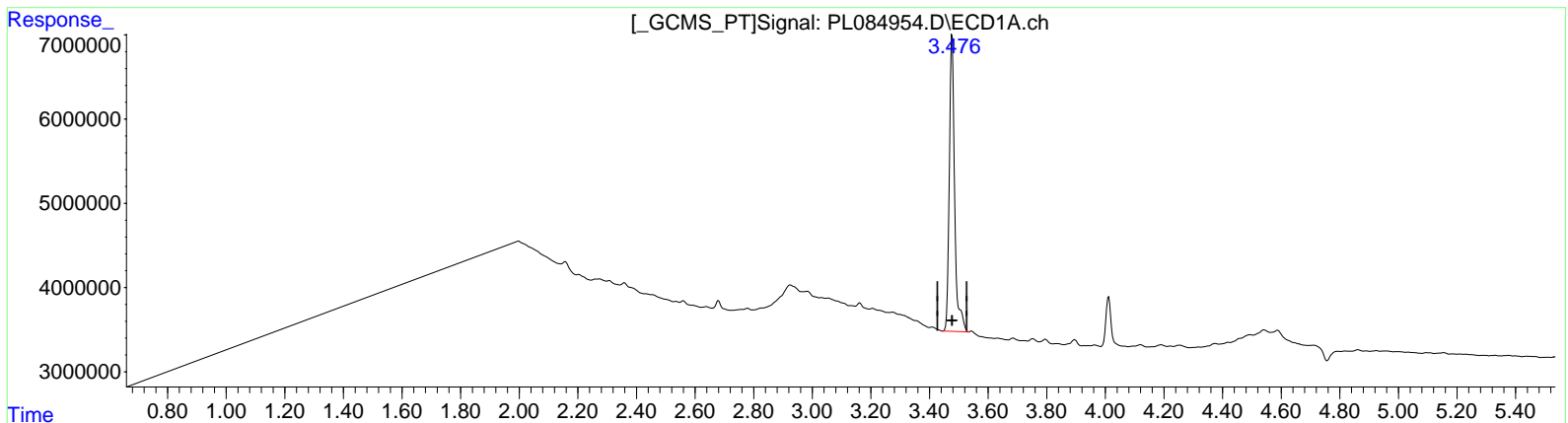
Instrument :  
 ECD\_L  
 ClientSampleId :  
 BH8X3

Manual Integrations APPROVED

Reviewed By : Abdul Mirza 08/25/2023  
 Supervised By : mohammad ahmed 08/25/2023

Integration File signal 1: autoint1.e  
 Integration File signal 2: autoint2.e  
 Quant Time: Aug 23 22:37:10 2023  
 Quant Method : Z:\pestpcbsrv\HPCHEM1\ECD\_L\methods\PL081523CLP.M  
 Quant Title : GC Extractables  
 QLast Update : Tue Aug 15 05:52:51 2023  
 Response via : Initial Calibration  
 Integrator: ChemStation

Volume Inj. : 1 µl  
 Signal #1 Phase : ZB-MR2 Signal #2 Phase: ZB-MR1  
 Signal #1 Info : 30M x 0.32mm x 0.2 Signal #2 Info : 30M x 0.32mm x 0.50µm



(1) Tetrachloro-m-xylene (SA)  
 3.477min 17.871 ng/ml  
 response 44802538

(1) Tetrachloro-m-xylene #2 (SA)  
 2.682min 23.657 ng/ml  
 response 27927257

Data Path : Z:\pestpcbsrv\HPCHEM1\ECD\_L\Data\PL082323\  
 Data File : PL084954.D  
 Signal(s) : Signal #1: ECD1A.ch Signal #2: ECD2B.ch  
 Acq On : 23 Aug 2023 21:17  
 Operator : AR\AJ  
 Sample : 04105-18  
 Misc :  
 ALS Vial : 28 Sample Multiplier: 1

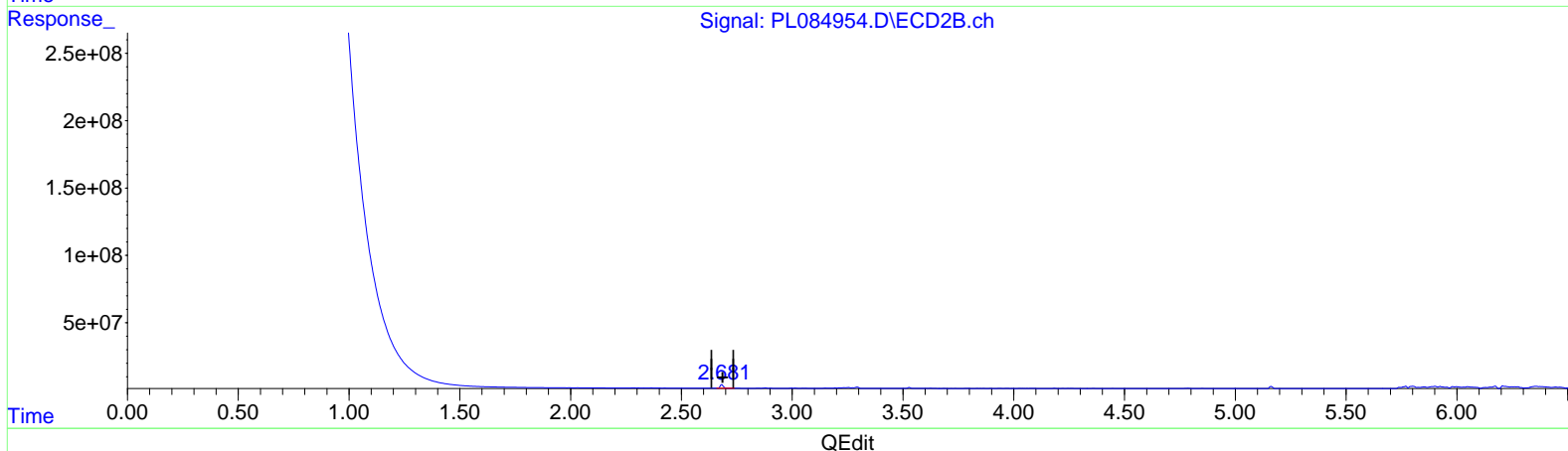
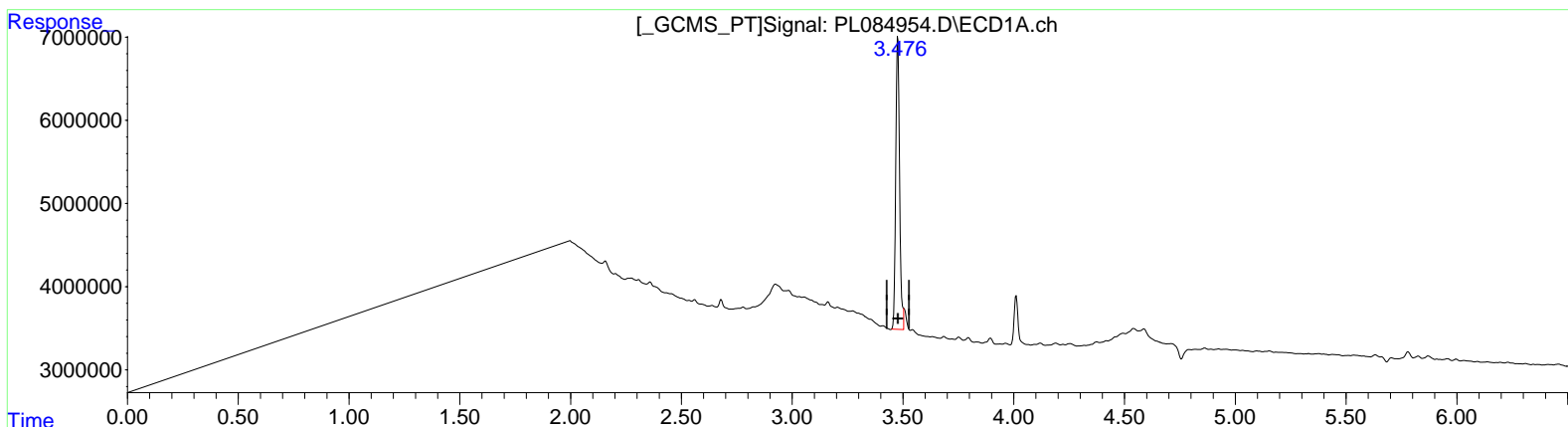
Instrument :  
 ECD\_L  
 ClientSampleId :  
 BH8X3

Manual Integrations APPROVED

Reviewed By : Abdul Mirza 08/25/2023  
 Supervised By : mohammad ahmed 08/25/2023

Integration File signal 1: autoint1.e  
 Integration File signal 2: autoint2.e  
 Quant Time: Aug 23 22:37:10 2023  
 Quant Method : Z:\pestpcbsrv\HPCHEM1\ECD\_L\methods\PL081523CLP.M  
 Quant Title : GC Extractables  
 QLast Update : Tue Aug 15 05:52:51 2023  
 Response via : Initial Calibration  
 Integrator: ChemStation

Volume Inj. : 1 µl  
 Signal #1 Phase : ZB-MR2 Signal #2 Phase: ZB-MR1  
 Signal #1 Info : 30M x 0.32mm x 0.2 Signal #2 Info : 30M x 0.32mm x 0.50µm



(1) Tetrachloro-m-xylene (SA)  
 3.476min 16.883 ng/ml m  
 response 42323606

(1) Tetrachloro-m-xylene #2 (SA)  
 2.682min 23.657 ng/ml  
 response 27927257