

Data Path : Z:\pestpcbsrv\HPCHEM1\ECD_L\Data\PL082521\
 Data File : PL0693436.D
 Signal(s) : Signal #1: ECD1A.ch Signal #2: ECD2B.ch
 Acq On : 25 Aug 2021 11:09
 Operator : AR\AJ
 Sample : PB138694BS
 Misc : CHLOR BS
 ALS Vial : 8 Sample Multiplier: 1

Instrument :
 ECD_L
 ClientSampleId :
 PB138694BS

Integration File signal 1: autoint1.e
 Integration File signal 2: autoint2.e
 Quant Time: Aug 26 03:46:25 2021
 Quant Method : Z:\pestpcbsrv\HPCHEM1\ECD_L\methods\PL082021.M
 Quant Title : GC Extractables
 QLast Update : Sat Aug 21 02:23:37 2021
 Response via : Initial Calibration
 Integrator: ChemStation

Volume Inj. : 1 µl
 Signal #1 Phase : ZB-MR2 Signal #2 Phase: ZB-MR1
 Signal #1 Info : 30M x 0.32mm x0.2 Signal #2 Info : 30M x 0.32mm x0.5µm

| Compound | RT#1 | RT#2 | Resp#1 | Resp#2 | ng/ml | ng/ml |
|-----------------------------|--------|--------|----------|----------|---------|----------|
| ----- | | | | | | |
| System Monitoring Compounds | | | | | | |
| 1) SA Tetrachlo... | 4.637 | 5.569 | 9628743 | 27840090 | 20.870 | 19.435 |
| 28) SA Decachlor... | 10.405 | 11.495 | 12504445 | 23470213 | 18.527 | 19.150 |
| Target Compounds | | | | | | |
| 2) A alpha-BHC | 0.000 | 6.149 | 0 | 725888 | N.D. | 0.371 # |
| 4) MA Heptachlor | 6.176 | 7.196 | 4971840 | 13429207 | 7.179 | 7.369 |
| 5) MB Aldrin | 0.000 | 7.545f | 0 | 10912549 | N.D. | 6.566 # |
| 6) B beta-BHC | 6.153 | 6.800 | 2653203 | 1545436 | 4.500 | 1.644 # |
| 7) B delta-BHC | 0.000 | 7.035f | 0 | 8732809 | N.D. | 4.728 # |
| 8) B Heptachlo... | 0.000 | 8.021 | 0 | 6401985 | N.D. | 4.256 # |
| 9) A Endosulfan I | 7.477 | 0.000 | 1091279 | 0 | 1.843 | N.D. # |
| 10) B gamma-Chl... | 7.354 | 8.303 | 10551205 | 37612971 | 16.485 | 24.451 # |
| 11) B alpha-Chl... | 7.424 | 8.385 | 11308177 | 46828622 | 17.354 | 31.341 # |
| 13) MA Dieldrin | 0.000 | 8.722 | 0 | 2347247 | N.D. | 1.672 # |
| 14) MA Endrin | 0.000 | 8.989f | 0 | 1136629 | N.D. | 0.968 # |
| 15) B Endosulfa... | 8.374 | 9.171f | 4181430 | 1308341 | 7.526 | 1.106 # |
| 16) A 4,4'-DDD | 0.000 | 9.121 | 0 | 2069123 | N.D. | 1.687 # |
| 23) Chlordane-1 | 5.965 | 6.954 | 3029828 | 10859717 | 171.116 | 191.830 |
| 24) Chlordane-2 | 6.653 | 7.545 | 4599458 | 10912549 | 180.192 | 190.487 |
| 25) Chlordane-3 | 7.354 | 8.303 | 10551205 | 37612971 | 162.369 | 175.641 |
| 26) Chlordane-4 | 7.424 | 8.385 | 11308177 | 46828622 | 162.054 | 181.942 |
| 27) Chlordane-5 | 8.374 | 9.273 | 4181430 | 8012732 | 163.950 | 179.628 |

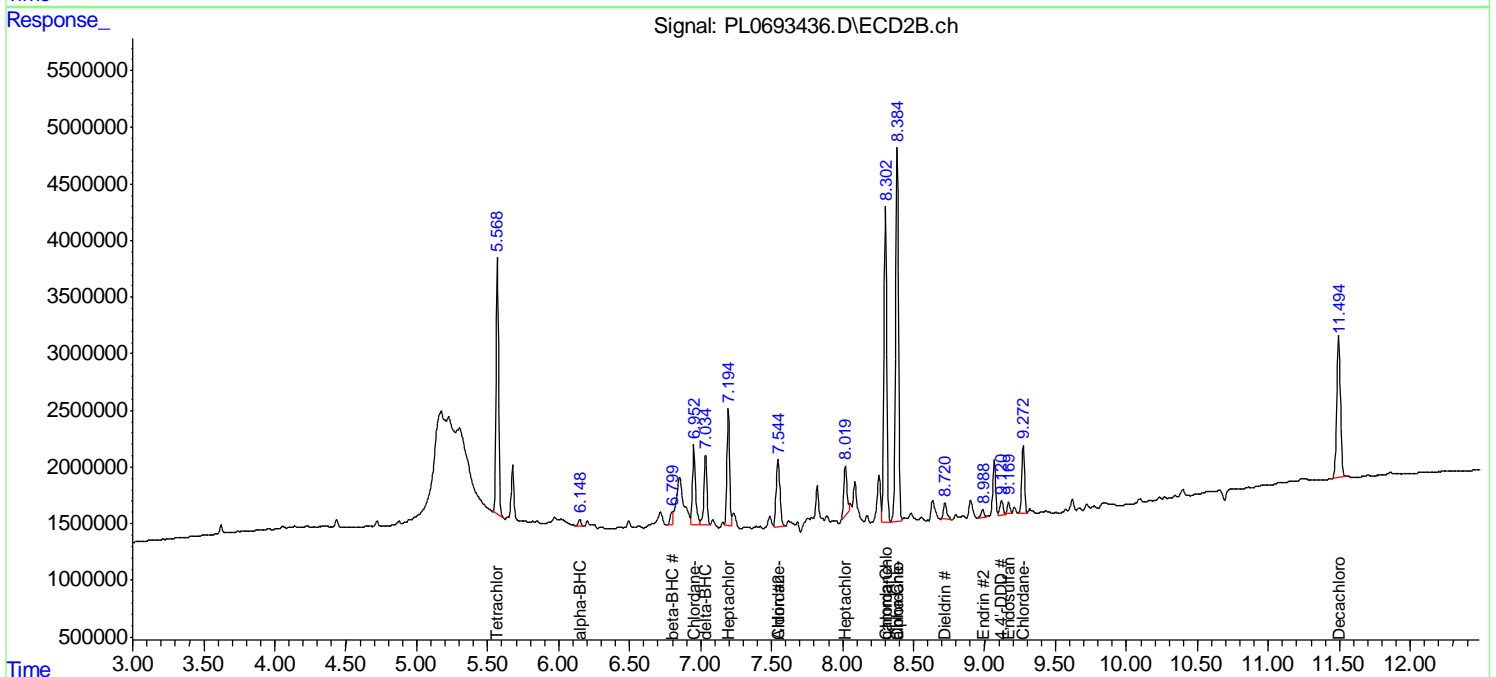
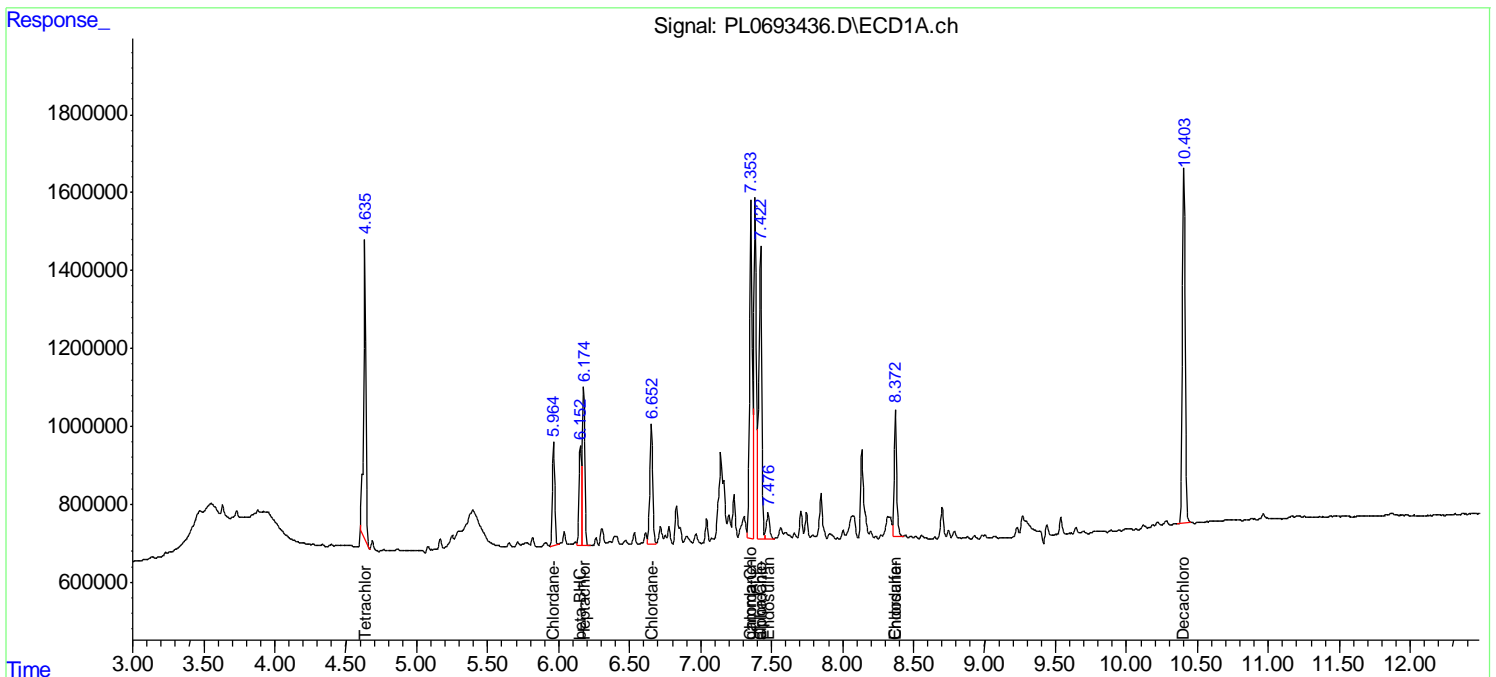
(f)=RT Delta > 1/2 Window (#)=Amounts differ by > 25% (m)=manual int.

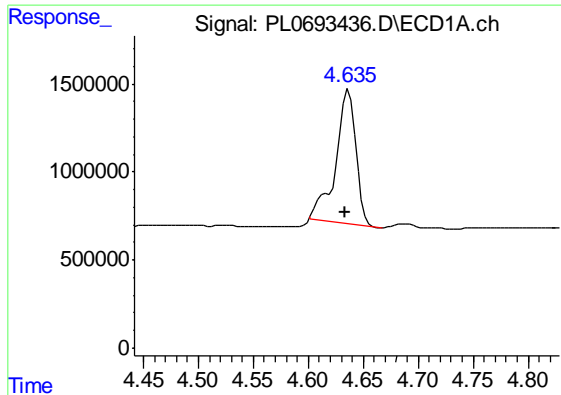
Data Path : Z:\pestpcbsrv\HPCHEM1\ECD_L\Data\PL082521\
 Data File : PL0693436.D
 Signal(s) : Signal #1: ECD1A.ch Signal #2: ECD2B.ch
 Acq On : 25 Aug 2021 11:09
 Operator : AR\AJ
 Sample : PB138694BS
 Misc : CHLOR BS
 ALS Vial : 8 Sample Multiplier: 1

Instrument :
 ECD_L
 Client Sampled :
 PB138694BS

Integration File signal 1: autoint1.e
 Integration File signal 2: autoint2.e
 Quant Time: Aug 26 03:46:25 2021
 Quant Method : Z:\pestpcbsrv\HPCHEM1\ECD_L\methods\PL082021.M
 Quant Title : GC Extractables
 QLast Update : Sat Aug 21 02:23:37 2021
 Response via : Initial Calibration
 Integrator: ChemStation

Volume Inj. : 1 µl
 Signal #1 Phase : ZB-MR2 Signal #2 Phase: ZB-MR1
 Signal #1 Info : 30M x 0.32mm x0.2 Signal #2 Info : 30M x 0.32mm x0.5µm

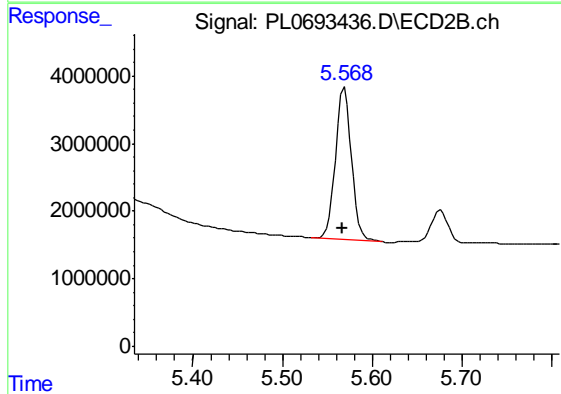




#1 Tetrachloro-m-xylene

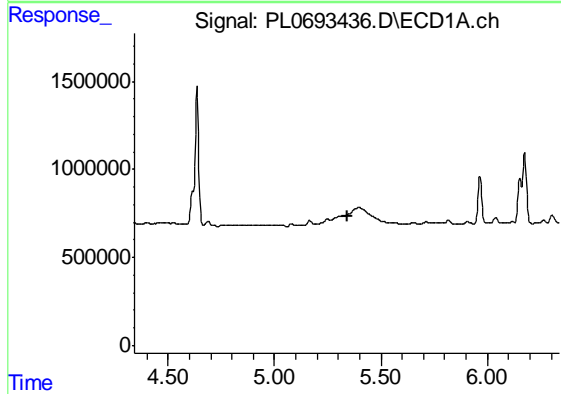
R.T.: 4.637 min
 Delta R.T.: 0.003 min
 Response: 9628743
 Conc: 20.87 ng/ml

Instrument :
 ECD_L
 ClientSampleId :
 PB138694BS



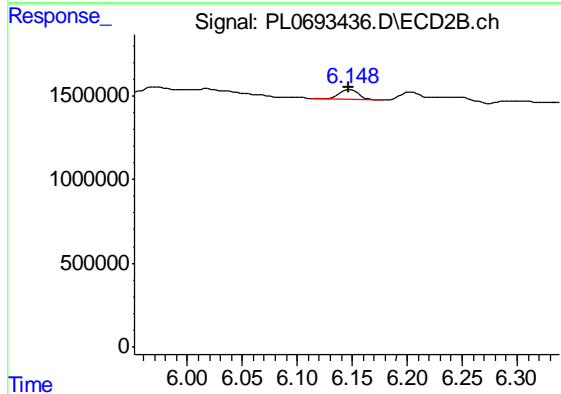
#1 Tetrachloro-m-xylene

R.T.: 5.569 min
 Delta R.T.: 0.003 min
 Response: 27840090
 Conc: 19.43 ng/ml



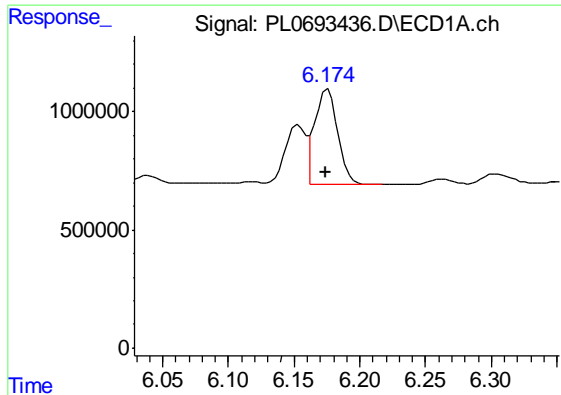
#2 alpha-BHC

R.T.: 0.000 min
 Exp R.T. : 5.340 min
 Response: 0
 Conc: N.D.



#2 alpha-BHC

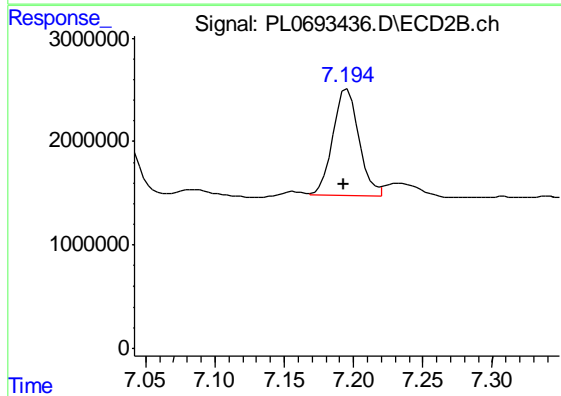
R.T.: 6.149 min
 Delta R.T.: 0.002 min
 Response: 725888
 Conc: 0.37 ng/ml



#4 Heptachlor

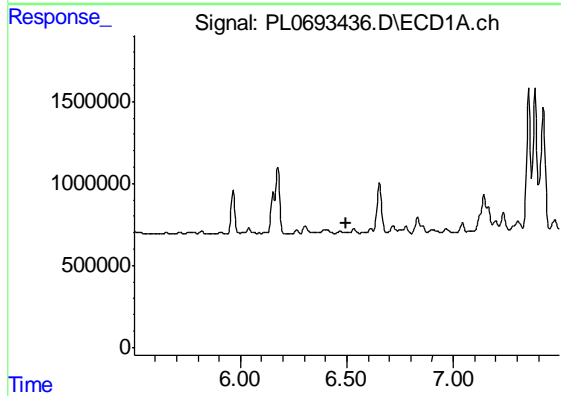
R.T.: 6.176 min
 Delta R.T.: 0.002 min
 Response: 4971840
 Conc: 7.18 ng/ml

Instrument :
 ECD_L
 ClientSampleId :
 PB138694BS



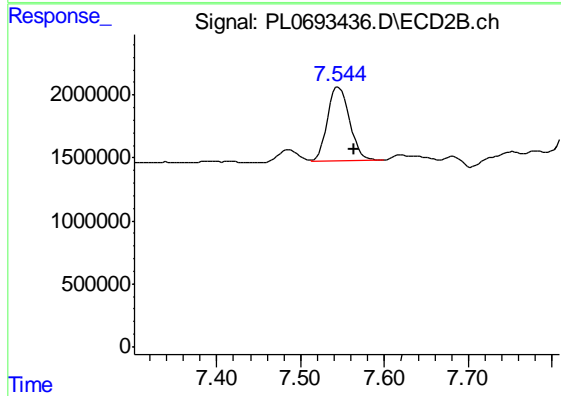
#4 Heptachlor

R.T.: 7.196 min
 Delta R.T.: 0.003 min
 Response: 13429207
 Conc: 7.37 ng/ml



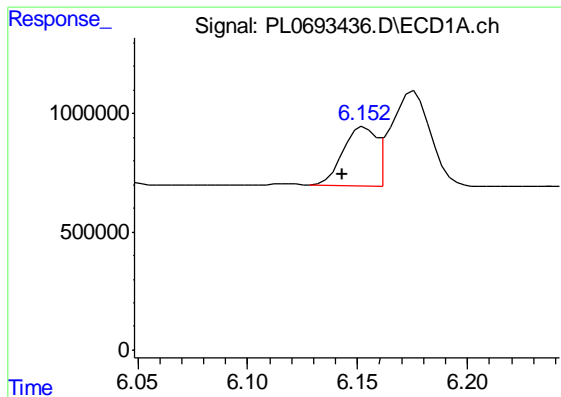
#5 Aldrin

R.T.: 0.000 min
 Exp R.T. : 6.499 min
 Response: 0
 Conc: N.D.



#5 Aldrin

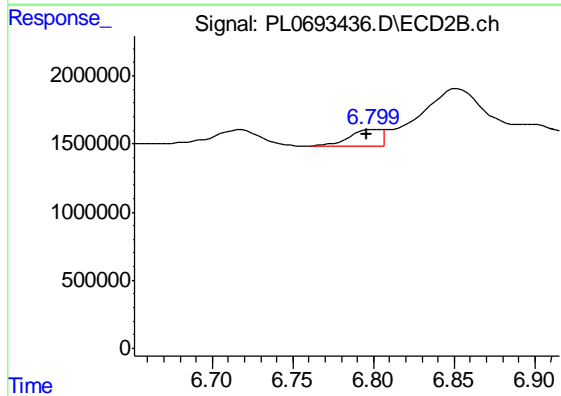
R.T.: 7.545 min
 Delta R.T.: -0.019 min
 Response: 10912549
 Conc: 6.57 ng/ml



#6 beta-BHC

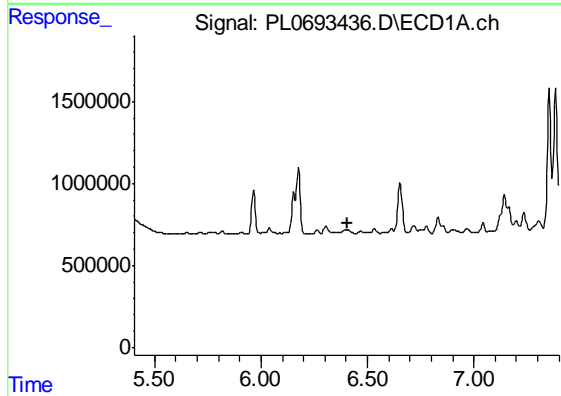
R.T.: 6.153 min
 Delta R.T.: 0.010 min
 Response: 2653203
 Conc: 4.50 ng/ml

Instrument :
 ECD_L
 ClientSampled :
 PB138694BS



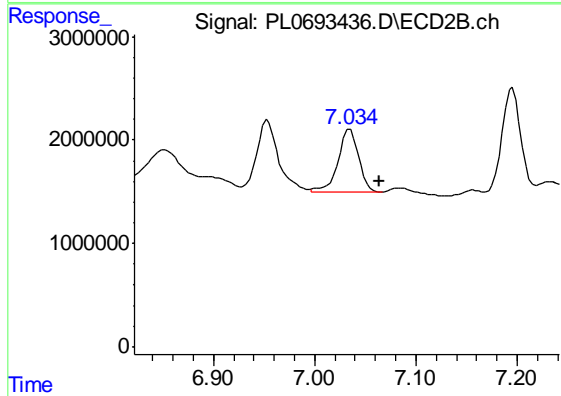
#6 beta-BHC

R.T.: 6.800 min
 Delta R.T.: 0.004 min
 Response: 1545436
 Conc: 1.64 ng/ml



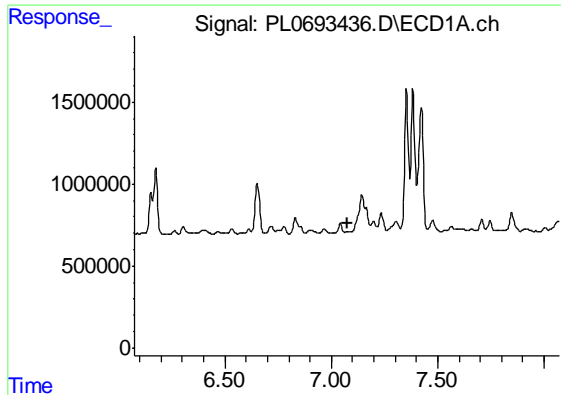
#7 delta-BHC

R.T.: 0.000 min
 Exp R.T. : 6.404 min
 Response: 0
 Conc: N.D.



#7 delta-BHC

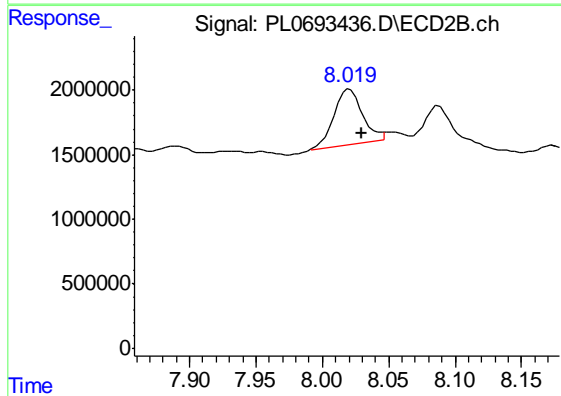
R.T.: 7.035 min
 Delta R.T.: -0.029 min
 Response: 8732809
 Conc: 4.73 ng/ml



#8 Heptachlor epoxide

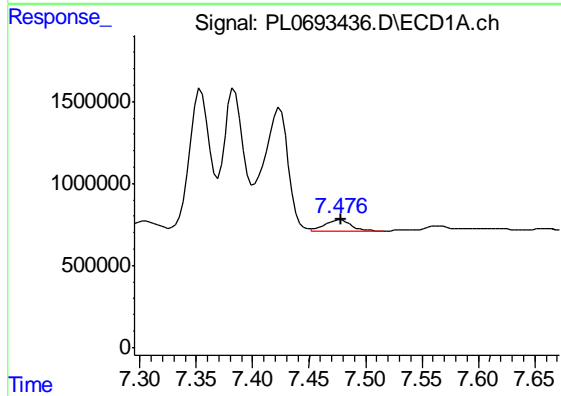
R.T.: 0.000 min
 Exp R.T. : 7.075 min
 Response: 0
 Conc: N.D.

Instrument :
 ECD_L
 ClientSampleId :
 PB138694BS



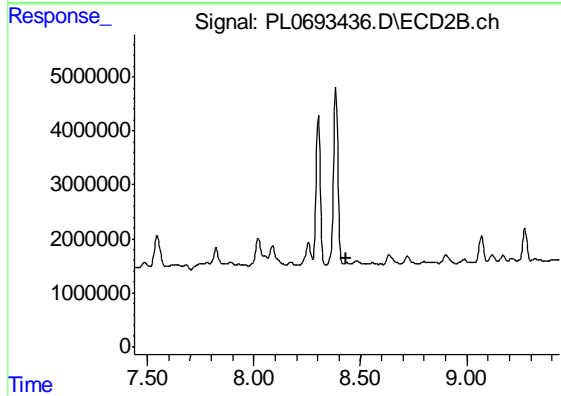
#8 Heptachlor epoxide

R.T.: 8.021 min
 Delta R.T.: -0.009 min
 Response: 6401985
 Conc: 4.26 ng/ml



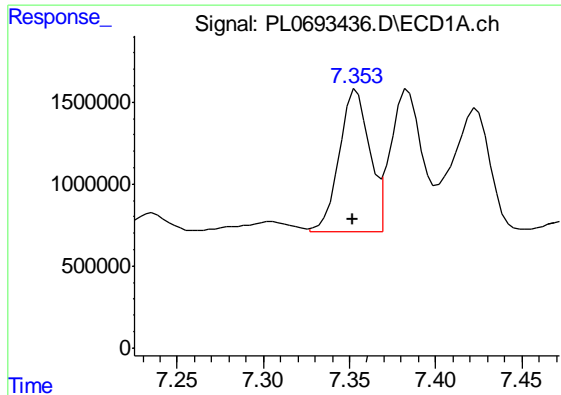
#9 Endosulfan I

R.T.: 7.477 min
 Delta R.T.: 0.000 min
 Response: 1091279
 Conc: 1.84 ng/ml



#9 Endosulfan I

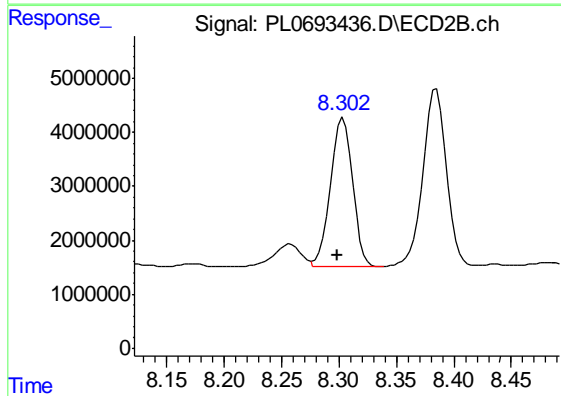
R.T.: 0.000 min
 Exp R.T. : 8.436 min
 Response: 0
 Conc: N.D.



#10 gamma-Chlordane

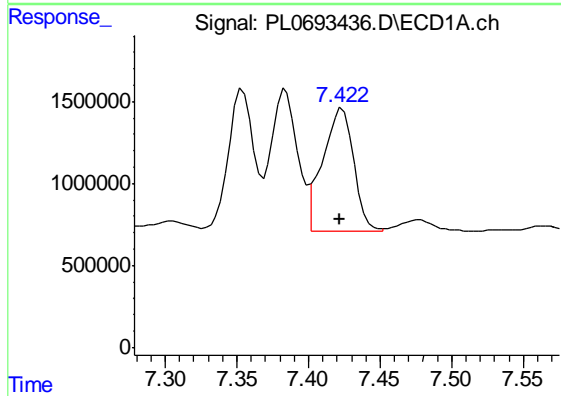
R.T.: 7.354 min
 Delta R.T.: 0.002 min
 Response: 10551205
 Conc: 16.48 ng/ml

Instrument :
 ECD_L
 ClientSampleId :
 PB138694BS



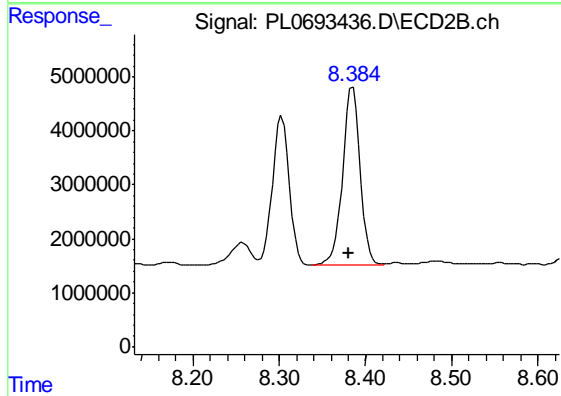
#10 gamma-Chlordane

R.T.: 8.303 min
 Delta R.T.: 0.004 min
 Response: 37612971
 Conc: 24.45 ng/ml



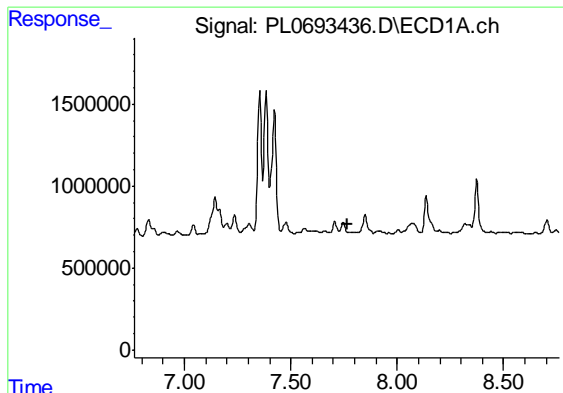
#11 alpha-Chlordane

R.T.: 7.424 min
 Delta R.T.: 0.002 min
 Response: 11308177
 Conc: 17.35 ng/ml



#11 alpha-Chlordane

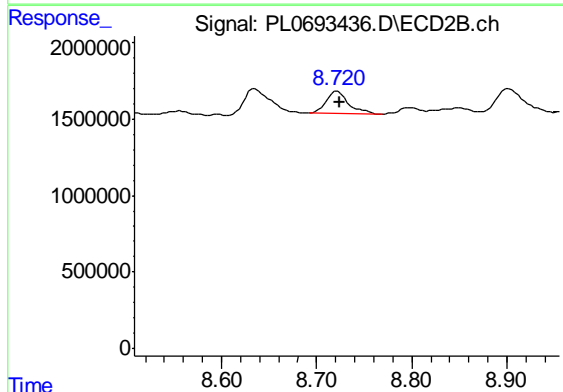
R.T.: 8.385 min
 Delta R.T.: 0.004 min
 Response: 46828622
 Conc: 31.34 ng/ml



#13 Dieldrin

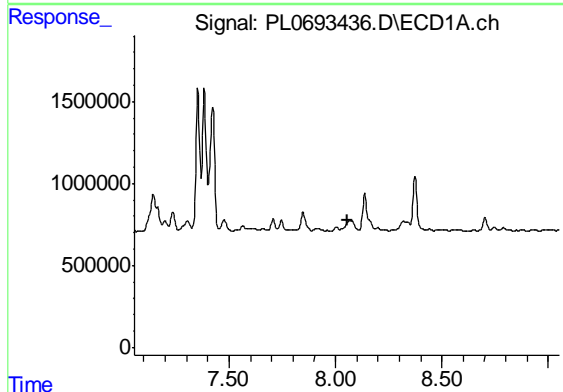
R.T.: 0.000 min
 Exp R.T. : 7.764 min
 Response: 0
 Conc: N.D.

Instrument :
 ECD_L
 ClientSampled :
 PB138694BS



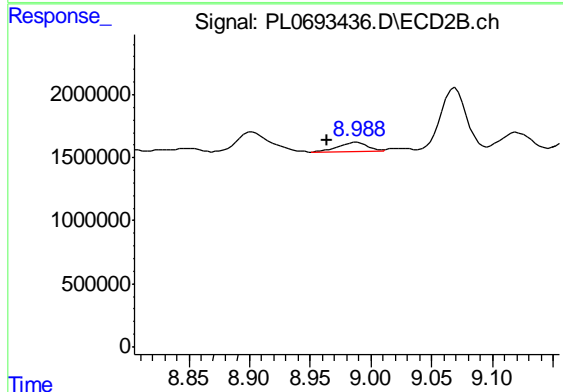
#13 Dieldrin

R.T.: 8.722 min
 Delta R.T.: -0.003 min
 Response: 2347247
 Conc: 1.67 ng/ml



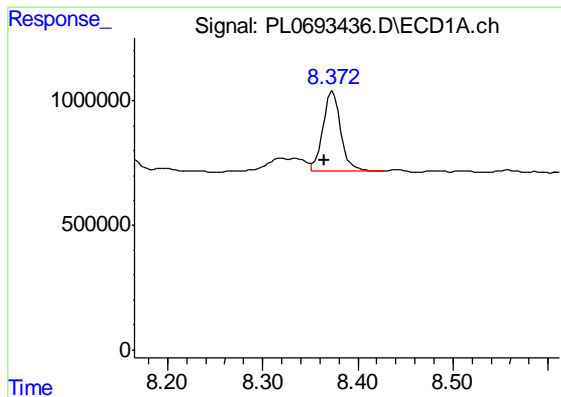
#14 Endrin

R.T.: 0.000 min
 Exp R.T. : 8.054 min
 Response: 0
 Conc: N.D.



#14 Endrin

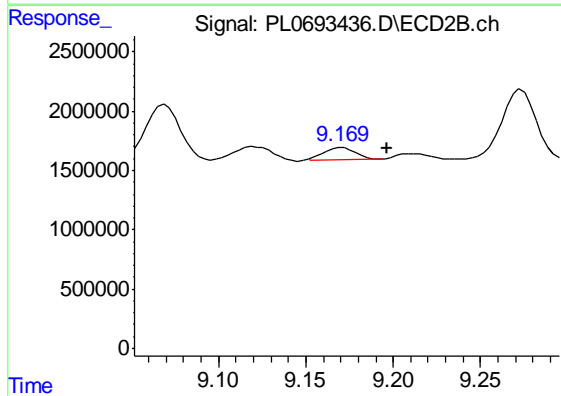
R.T.: 8.989 min
 Delta R.T.: 0.025 min
 Response: 1136629
 Conc: 0.97 ng/ml



#15 Endosulfan II

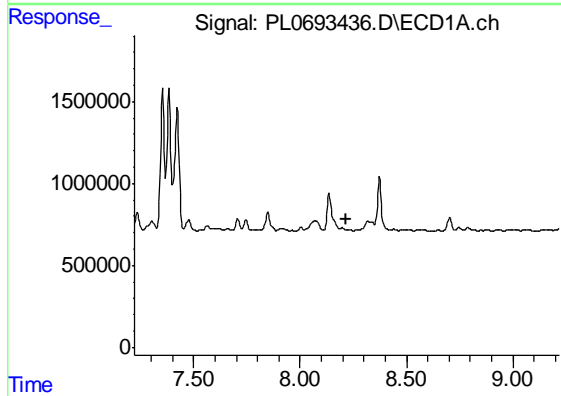
R.T.: 8.374 min
 Delta R.T.: 0.009 min
 Response: 4181430
 Conc: 7.53 ng/ml

Instrument :
 ECD_L
 ClientSampled :
 PB138694BS



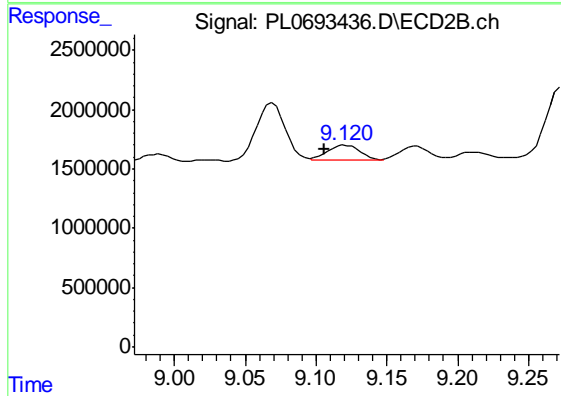
#15 Endosulfan II

R.T.: 9.171 min
 Delta R.T.: -0.026 min
 Response: 1308341
 Conc: 1.11 ng/ml



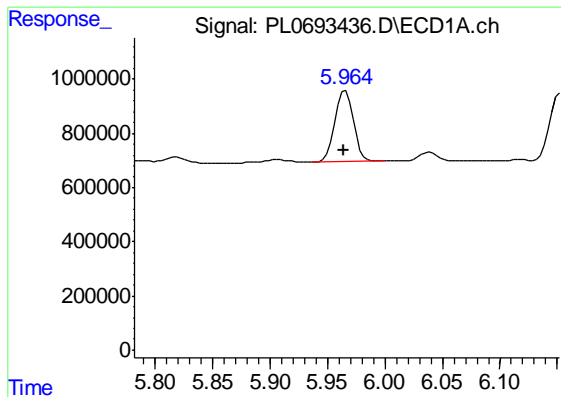
#16 4,4'-DDD

R.T.: 0.000 min
 Exp R.T. : 8.220 min
 Response: 0
 Conc: N.D.



#16 4,4'-DDD

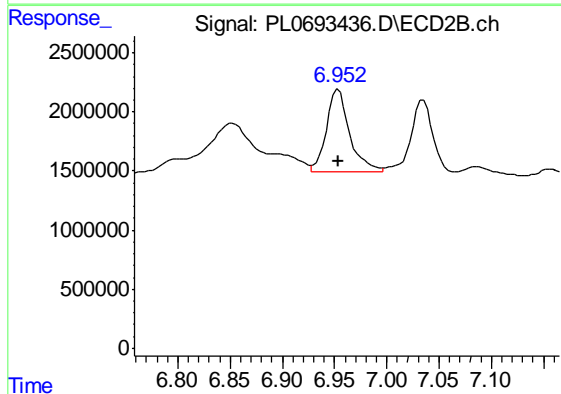
R.T.: 9.121 min
 Delta R.T.: 0.015 min
 Response: 2069123
 Conc: 1.69 ng/ml



#23 Chlordane-1

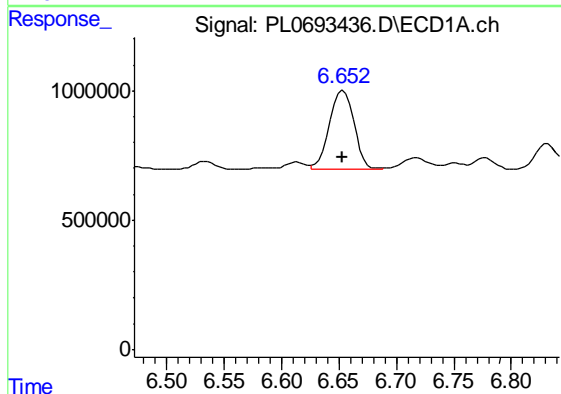
R.T.: 5.965 min
 Delta R.T.: 0.001 min
 Response: 3029828
 Conc: 171.12 ng/ml

Instrument :
 ECD_L
 ClientSampled :
 PB138694BS



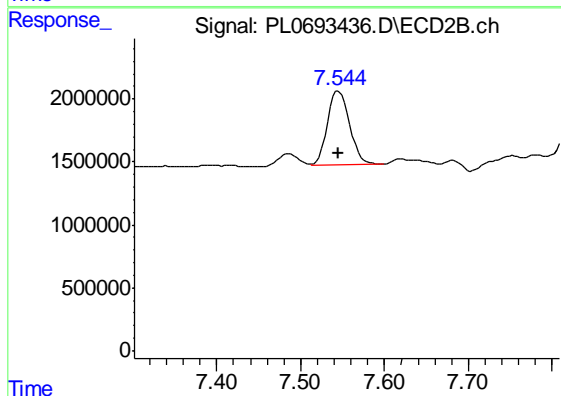
#23 Chlordane-1

R.T.: 6.954 min
 Delta R.T.: 0.000 min
 Response: 10859717
 Conc: 191.83 ng/ml



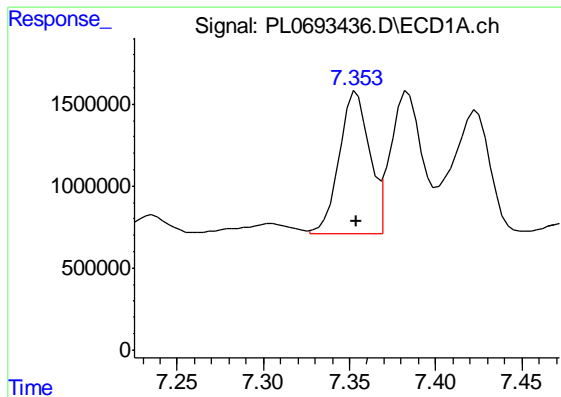
#24 Chlordane-2

R.T.: 6.653 min
 Delta R.T.: 0.000 min
 Response: 4599458
 Conc: 180.19 ng/ml



#24 Chlordane-2

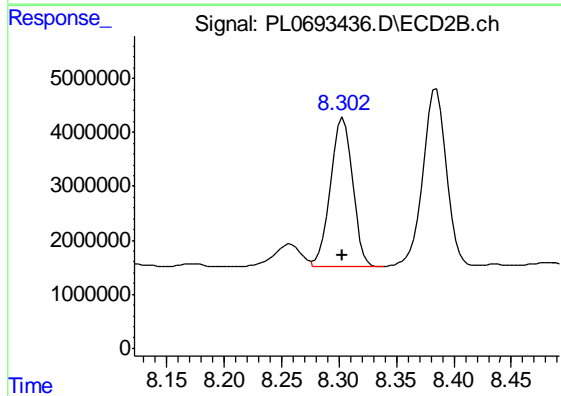
R.T.: 7.545 min
 Delta R.T.: 0.000 min
 Response: 10912549
 Conc: 190.49 ng/ml



#25 Chlordane-3

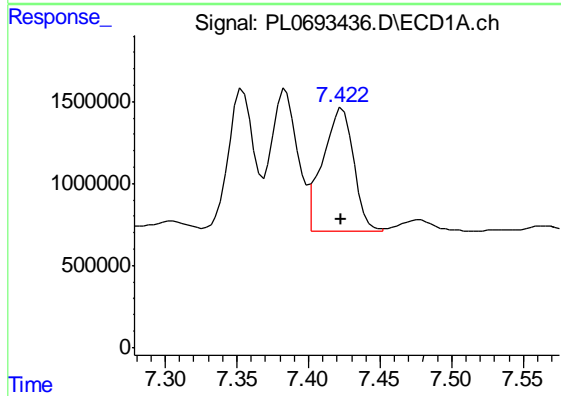
R.T.: 7.354 min
 Delta R.T.: 0.000 min
 Response: 10551205
 Conc: 162.37 ng/ml

Instrument :
 ECD_L
 ClientSampleId :
 PB138694BS



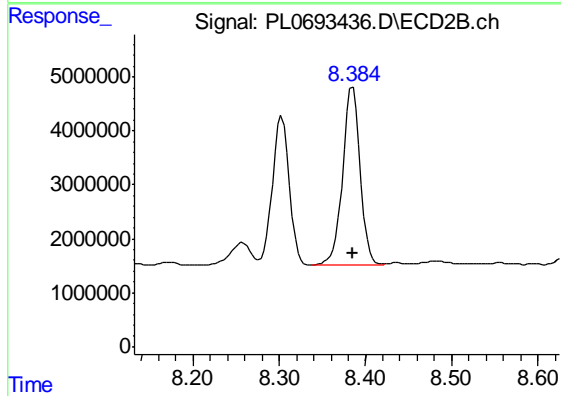
#25 Chlordane-3

R.T.: 8.303 min
 Delta R.T.: 0.000 min
 Response: 37612971
 Conc: 175.64 ng/ml



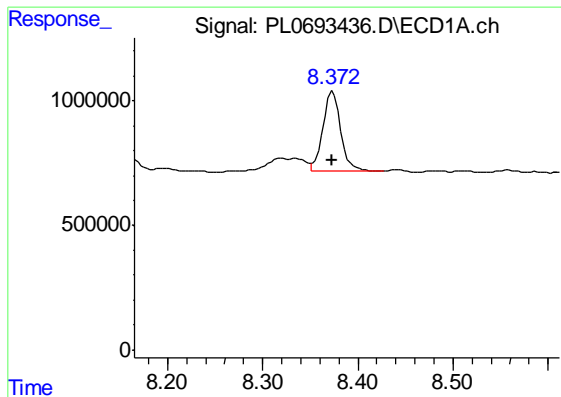
#26 Chlordane-4

R.T.: 7.424 min
 Delta R.T.: 0.000 min
 Response: 11308177
 Conc: 162.05 ng/ml



#26 Chlordane-4

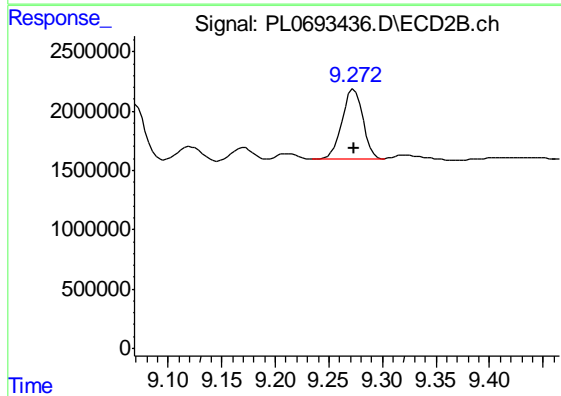
R.T.: 8.385 min
 Delta R.T.: 0.000 min
 Response: 46828622
 Conc: 181.94 ng/ml



#27 Chlordane-5

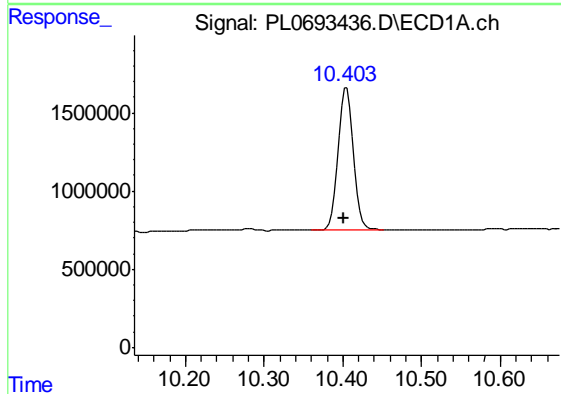
R.T.: 8.374 min
 Delta R.T.: 0.000 min
 Response: 4181430
 Conc: 163.95 ng/ml

Instrument :
 ECD_L
 ClientSampled :
 PB138694BS



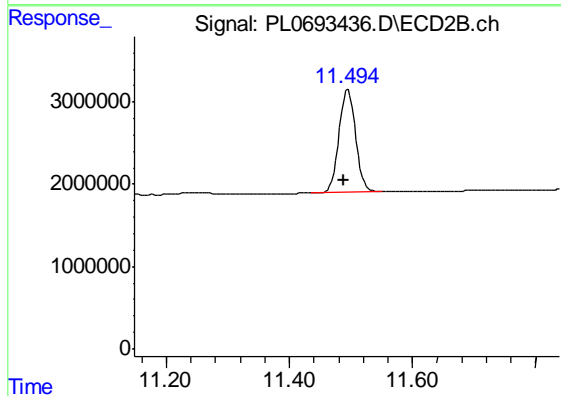
#27 Chlordane-5

R.T.: 9.273 min
 Delta R.T.: 0.000 min
 Response: 8012732
 Conc: 179.63 ng/ml



#28 Decachlorobiphenyl

R.T.: 10.405 min
 Delta R.T.: 0.003 min
 Response: 12504445
 Conc: 18.53 ng/ml



#28 Decachlorobiphenyl

R.T.: 11.495 min
 Delta R.T.: 0.007 min
 Response: 23470213
 Conc: 19.15 ng/ml