

Data Path : Z:\pestpcbsrv\HPCHEM1\ECD_L\Data\PL082620\
 Data File : PL061002.D
 Signal(s) : Signal #1: ECD1A.ch Signal #2: ECD2B.ch
 Acq On : 26 Aug 2020 13:20
 Operator : DD\AJ
 Sample : L3793-17
 Misc :
 ALS Vial : 12 Sample Multiplier: 1

Instrument :
 ECD_L
 ClientSampleId :

Integration File signal 1: autoint1.e
 Integration File signal 2: autoint2.e
 Quant Time: Aug 26 16:14:28 2020
 Quant Method : Z:\pestpcbsrv\HPCHEM1\ECD_L\methods\PL082520.M
 Quant Title : GC Extractables
 QLast Update : Tue Aug 25 16:59:57 2020
 Response via : Initial Calibration
 Integrator: ChemStation

Volume Inj. : 1 µl
 Signal #1 Phase : ZB-MR2 Signal #2 Phase: ZB-MR1
 Signal #1 Info : 30M x 0.32mm x0.2 Signal #2 Info : 30M x 0.32mm x0.5µm

Compound	RT#1	RT#2	Resp#1	Resp#2	ng/ml	ng/ml
System Monitoring Compounds						
1) SA Tetrachlo...	3.460	4.009	38288128	50637525	20.748	19.483
28) SA Decachlor...	8.214	9.097	35614600	45055738	21.141	21.353
Target Compounds						
15) B Endosulfa...	0.000	6.949	0	4978294	N.D.	1.935 #
21) B Endrin ke...	0.000	7.750	0	3909777	N.D.	1.571 #

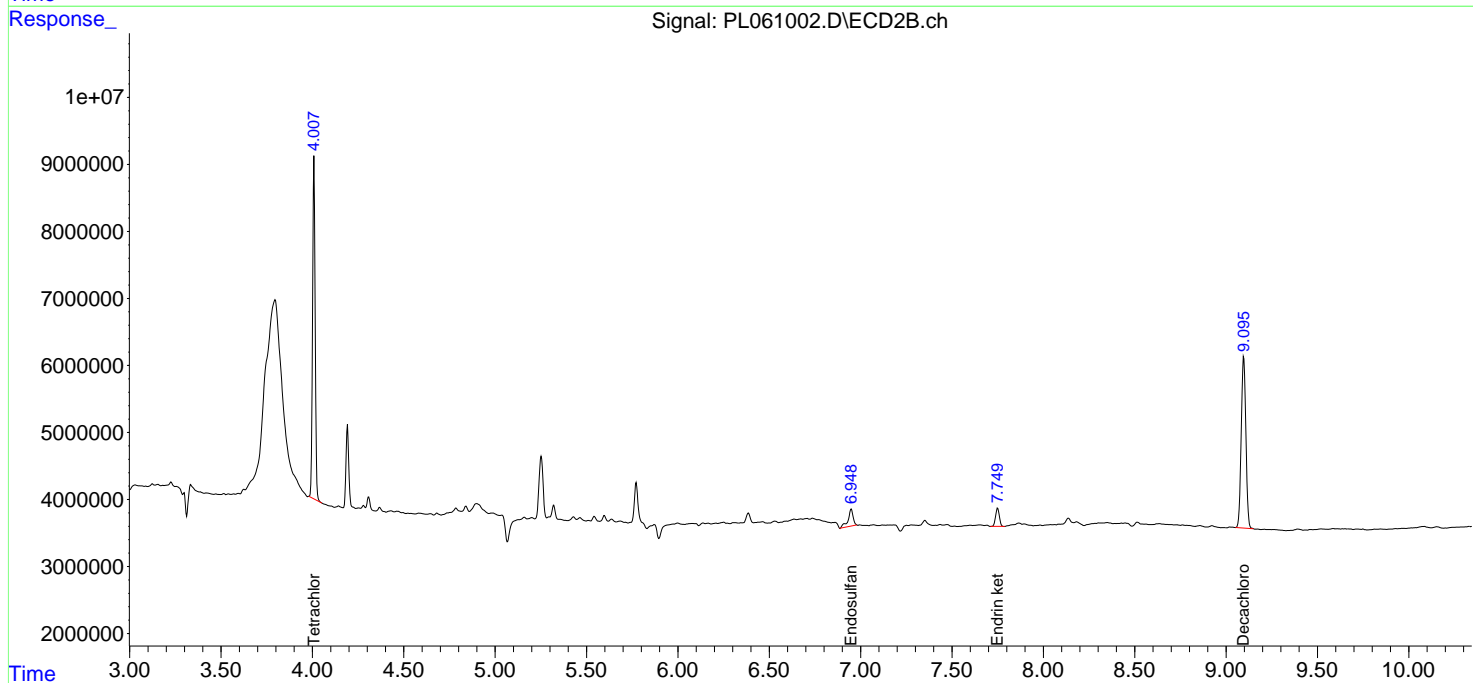
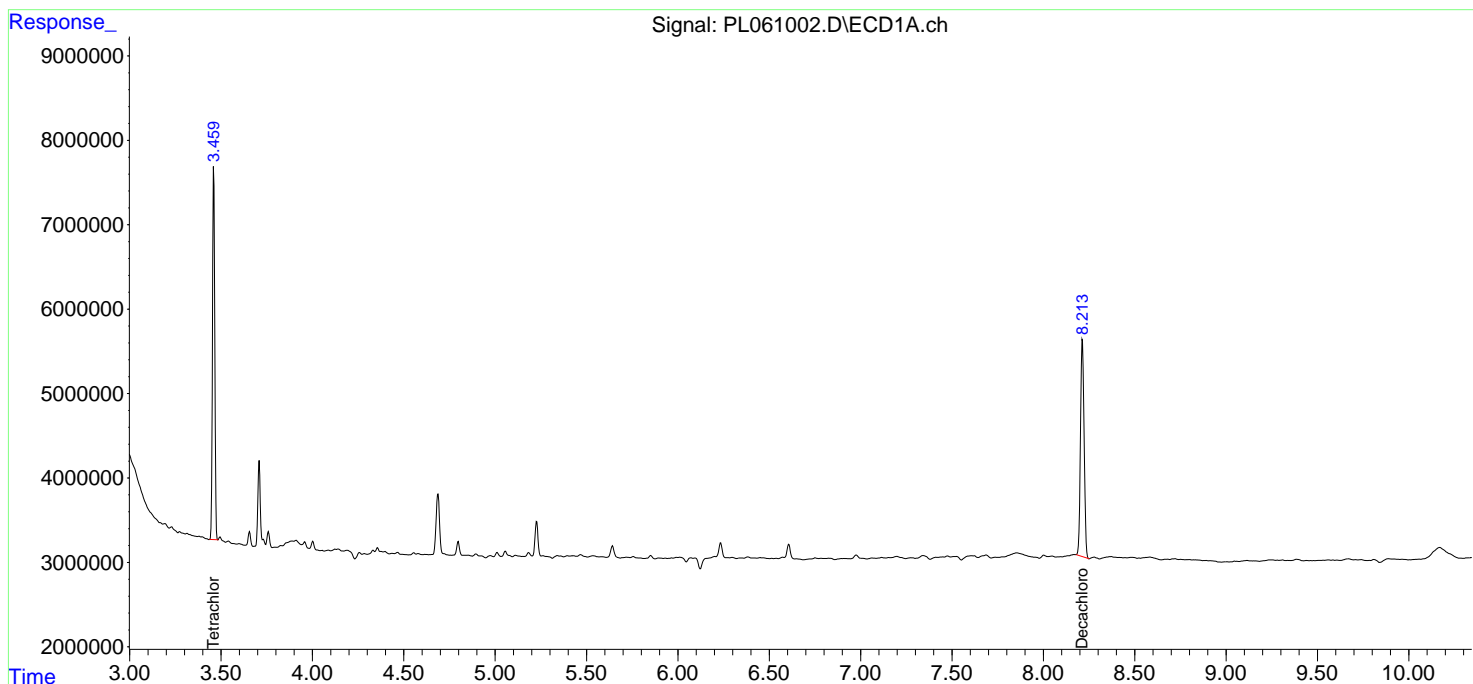
(f)=RT Delta > 1/2 Window (#)=Amounts differ by > 25% (m)=manual int.

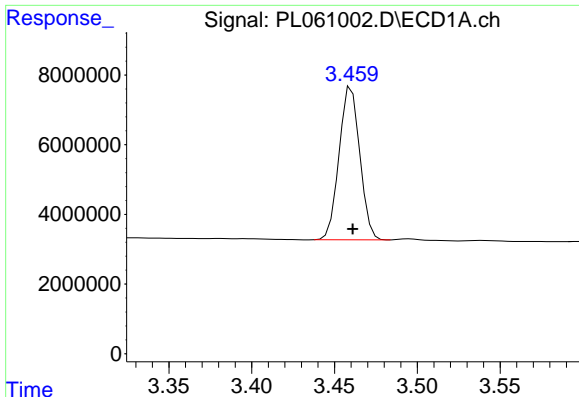
Data Path : Z:\pestpcbsrv\HPCHEM1\ECD_L\Data\PL082620\
 Data File : PL061002.D
 Signal(s) : Signal #1: ECD1A.ch Signal #2: ECD2B.ch
 Acq On : 26 Aug 2020 13:20
 Operator : DD\AJ
 Sample : L3793-17
 Misc :
 ALS Vial : 12 Sample Multiplier: 1

Instrument :
 ECD_L
 ClientSampleId :

Integration File signal 1: autoint1.e
 Integration File signal 2: autoint2.e
 Quant Time: Aug 26 16:14:28 2020
 Quant Method : Z:\pestpcbsrv\HPCHEM1\ECD_L\methods\PL082520.M
 Quant Title : GC Extractables
 QLast Update : Tue Aug 25 16:59:57 2020
 Response via : Initial Calibration
 Integrator: ChemStation

Volume Inj. : 1 µl
 Signal #1 Phase : ZB-MR2 Signal #2 Phase: ZB-MR1
 Signal #1 Info : 30M x 0.32mm x0.2 Signal #2 Info : 30M x 0.32mm x0.5µm

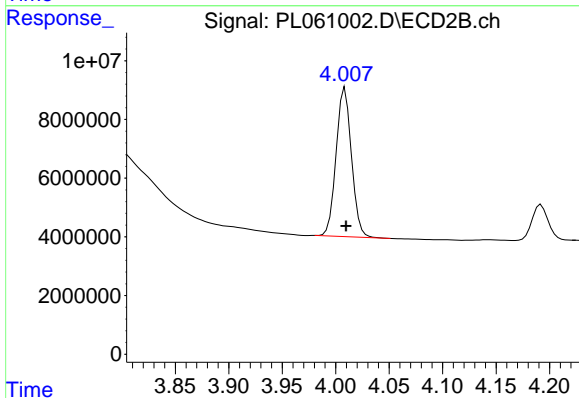




#1 Tetrachloro-m-xylene

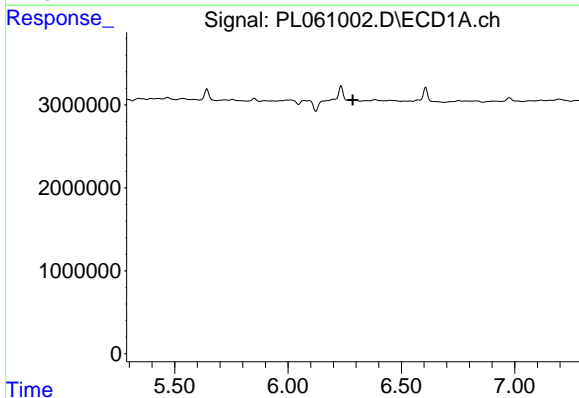
R.T.: 3.460 min
 Delta R.T.: 0.000 min
 Response: 38288128
 Conc: 20.75 ng/ml

Instrument :
 ECD_L
 ClientSampled :



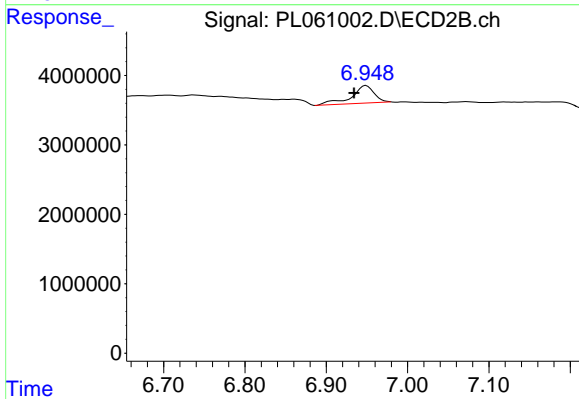
#1 Tetrachloro-m-xylene

R.T.: 4.009 min
 Delta R.T.: -0.001 min
 Response: 50637525
 Conc: 19.48 ng/ml



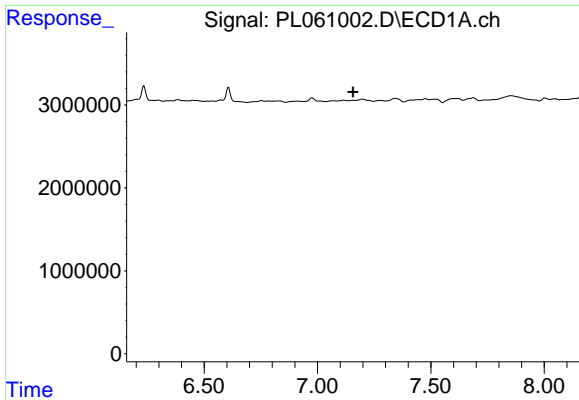
#15 Endosulfan II

R.T.: 0.000 min
 Exp R.T. : 6.286 min
 Response: 0
 Conc: N.D.



#15 Endosulfan II

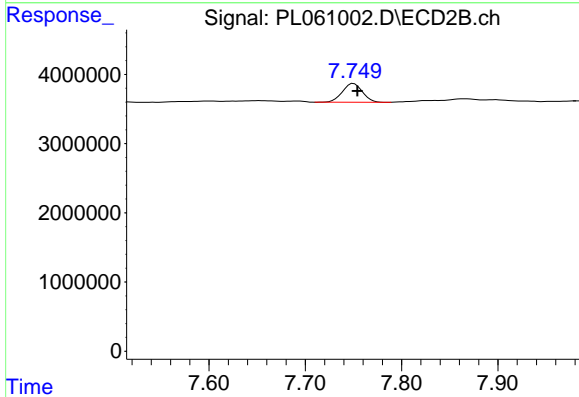
R.T.: 6.949 min
 Delta R.T.: 0.015 min
 Response: 4978294
 Conc: 1.94 ng/ml



#21 Endrin ketone

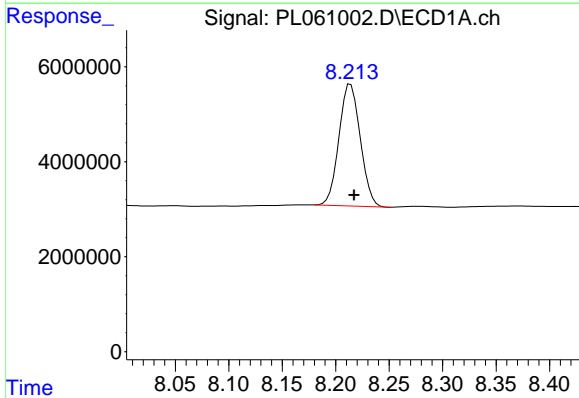
R.T.: 0.000 min
 Exp R.T.: 7.157 min
 Response: 0
 Conc: N.D.

Instrument :
 ECD_L
 ClientSampled :



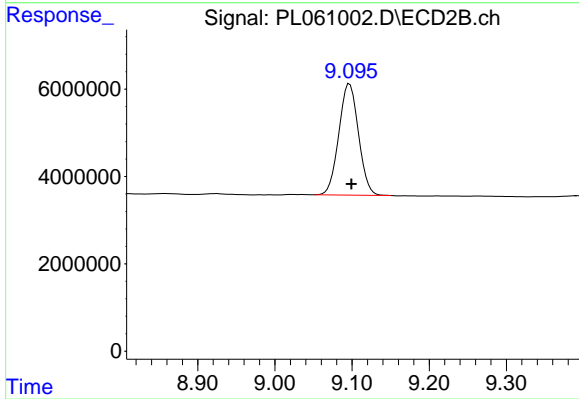
#21 Endrin ketone

R.T.: 7.750 min
 Delta R.T.: -0.004 min
 Response: 3909777
 Conc: 1.57 ng/ml



#28 Decachlorobiphenyl

R.T.: 8.214 min
 Delta R.T.: -0.003 min
 Response: 35614600
 Conc: 21.14 ng/ml



#28 Decachlorobiphenyl

R.T.: 9.097 min
 Delta R.T.: -0.002 min
 Response: 45055738
 Conc: 21.35 ng/ml