

Data Path : Z:\pestpcbsrv\HPCHEM1\ECD_L\Data\PL082724\
 Data File : PL091366.D
 Signal(s) : Signal #1: ECD1A.ch Signal #2: ECD2B.ch
 Acq On : 27 Aug 2024 21:18
 Operator : AR\AJ
 Sample : P3745-01
 Misc :
 ALS Vial : 25 Sample Multiplier: 1

Instrument :
 ECD_L
 ClientSampleId :
 CM-SOIL-PILE

Integration File signal 1: autoint1.e
 Integration File signal 2: autoint2.e
 Quant Time: Aug 28 05:38:22 2024
 Quant Method : Z:\pestpcbsrv\HPCHEM1\ECD_L\methods\PL081324.M
 Quant Title : GC Extractables
 QLast Update : Wed Aug 14 13:09:19 2024
 Response via : Initial Calibration
 Integrator: ChemStation

Volume Inj. : 1 µl
 Signal #1 Phase : ZB-MR1 Signal #2 Phase: ZB-MR1
 Signal #1 Info : 30M x 0.32mm x0.2 Signal #2 Info : 30M x 0.32mm x0.5µm

Compound	RT#1	RT#2	Resp#1	Resp#2	ng/ml	ng/ml

System Monitoring Compounds						
1) SA Tetrachlo...	3.544	2.784	24147311	23278255	11.246	11.925
28) SA Decachlor...	9.053	7.922	19223481	22704469	12.609	11.987
Target Compounds						
3) MA gamma-BHC...	0.000	3.635f	0	209622	N.D.	0.080 #
4) MA Heptachlor	0.000	3.981f	0	217786	N.D.	0.084 #
5) MB Aldrin	0.000	4.224	0	270363	N.D.	0.110 #
6) B beta-BHC	4.553f	0.000	314742	0	0.233	N.D. #
7) B delta-BHC	0.000	4.143	0	287986	N.D.	0.114 #
8) B Heptachlo...	0.000	4.738	0	83277	N.D.	0.037 #
9) A Endosulfan I	0.000	5.126	0	649680	N.D.	0.308 #
10) B gamma-Chl...	0.000	4.995	0	277066	N.D.	0.117 #
11) B alpha-Chl...	0.000	5.050	0	1016631	N.D.	0.432 #
12) B 4,4'-DDE	6.192	5.240	2367333	3503837	1.132	1.677 #
13) MA Dieldrin	0.000	5.373	0	1539146	N.D.	0.676 #
14) MA Endrin	0.000	5.659	0	2675361	N.D.	1.313 #
15) B Endosulfa...	0.000	5.935	0	89113	N.D.	0.046 #
16) A 4,4'-DDD	6.715	5.795	2111848	544513	1.397	0.330 #
17) MA 4,4'-DDT	7.023	6.044	5346521	5288968	3.012	2.977
18) B Endrin al...	0.000	6.121	0	184920	N.D.	0.119 #
19) B Endosulfa...	0.000	6.340	0	183639	N.D.	0.095 #
22) Mirex	0.000	7.014f	0	18048	N.D.	0.010 #
23) Chlordane-1	0.000	3.781	0	641048	N.D.	8.793 #
24) Chlordane-2	0.000	4.377	0	26570	N.D.	0.283 #
25) Chlordane-3	0.000	4.995	0	277066	N.D.	1.141 #
26) Chlordane-4	0.000	5.050	0	1016631	N.D.	4.360 #
27) Chlordane-5	0.000	5.734	0	1765007	N.D.	25.493 #

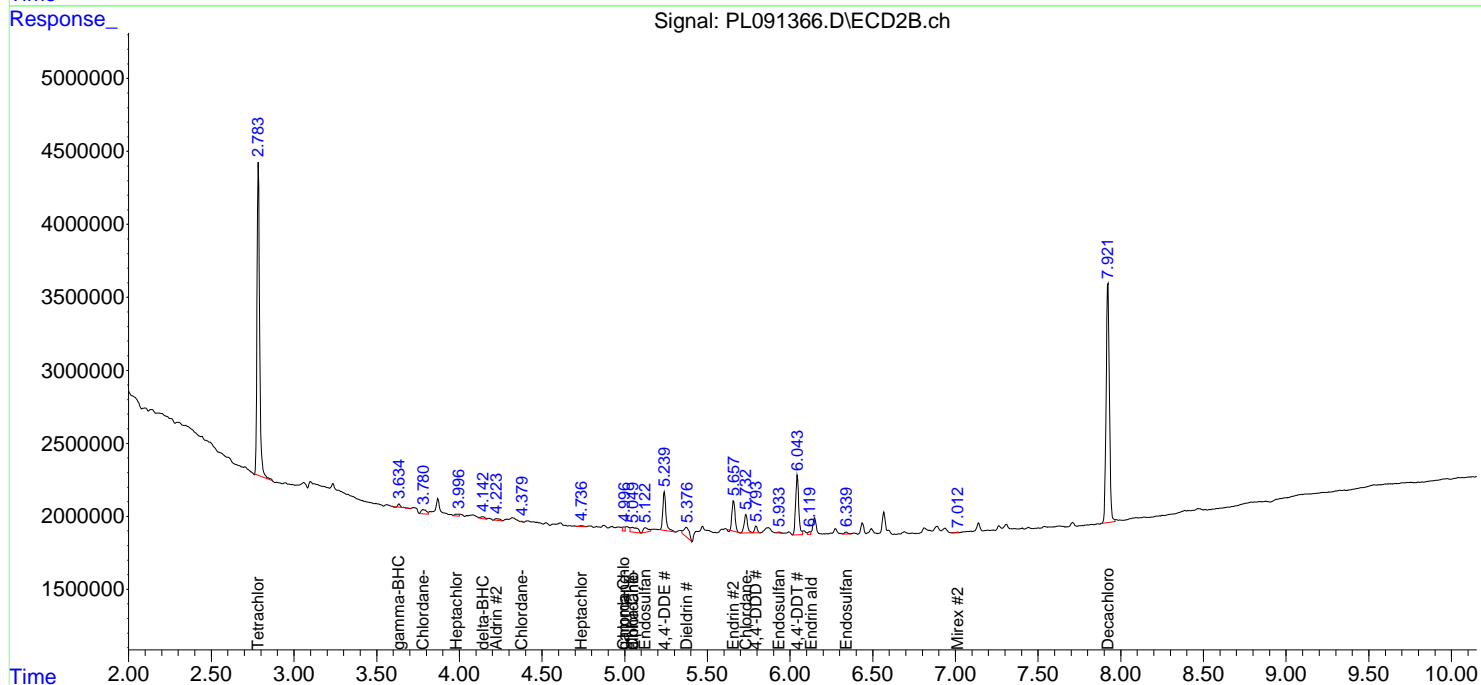
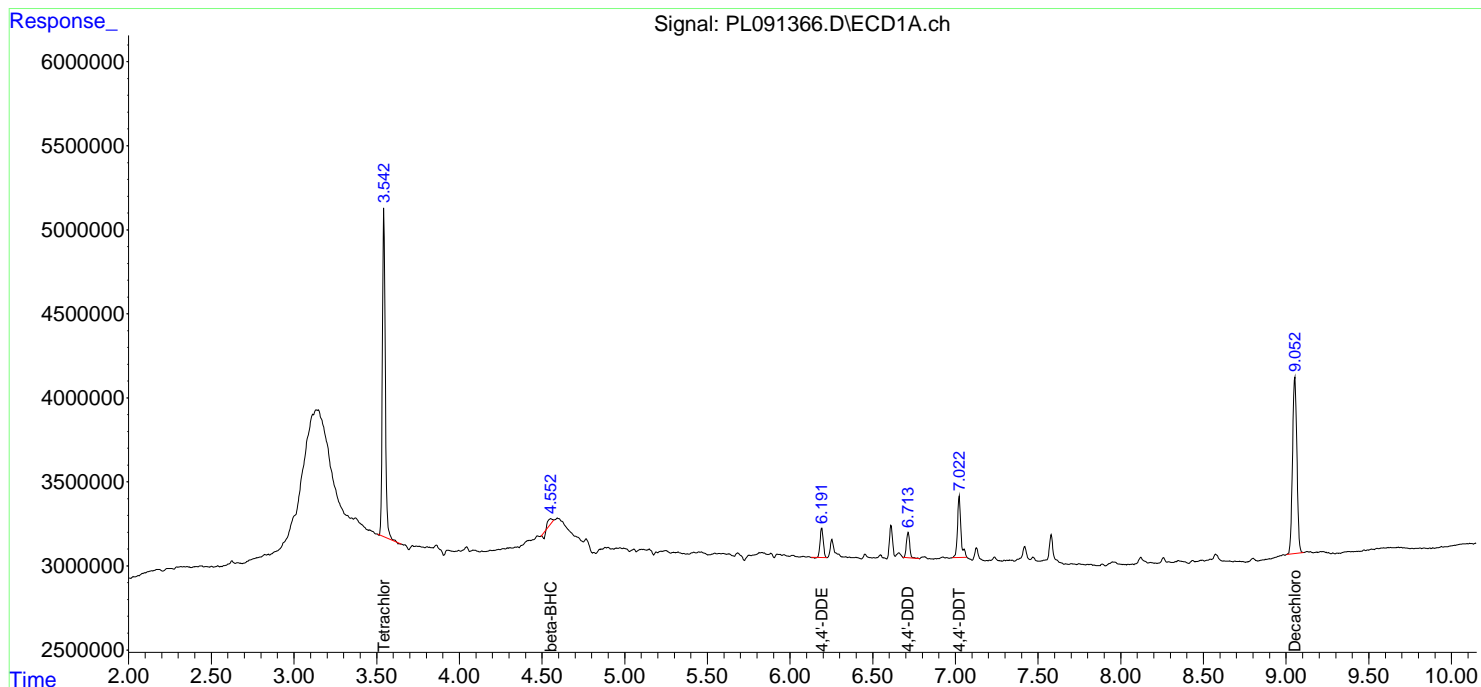
(f)=RT Delta > 1/2 Window (#)=Amounts differ by > 25% (m)=manual int.

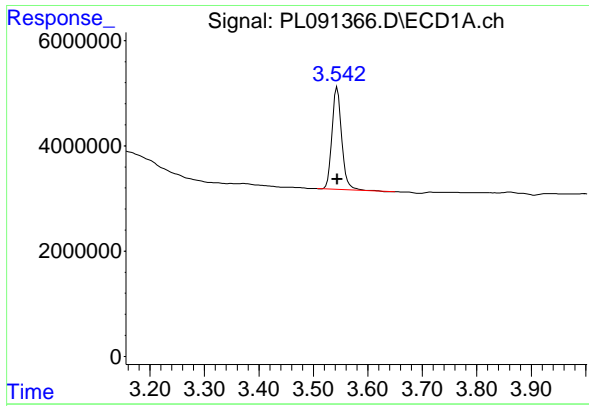
Data Path : Z:\pestpcbsrv\HPCHEM1\ECD_L\Data\PL082724\
 Data File : PL091366.D
 Signal(s) : Signal #1: ECD1A.ch Signal #2: ECD2B.ch
 Acq On : 27 Aug 2024 21:18
 Operator : AR\AJ
 Sample : P3745-01
 Misc :
 ALS Vial : 25 Sample Multiplier: 1

Instrument :
 ECD_L
 ClientSampleId :
 CM-SOIL-PILE

Integration File signal 1: autoint1.e
 Integration File signal 2: autoint2.e
 Quant Time: Aug 28 05:38:22 2024
 Quant Method : Z:\pestpcbsrv\HPCHEM1\ECD_L\methods\PL081324.M
 Quant Title : GC Extractables
 QLast Update : Wed Aug 14 13:09:19 2024
 Response via : Initial Calibration
 Integrator: ChemStation

Volume Inj. : 1 µl
 Signal #1 Phase : ZB-MR2 Signal #2 Phase: ZB-MR1
 Signal #1 Info : 30M x 0.32mm x0.2 Signal #2 Info : 30M x 0.32mm x0.5µm

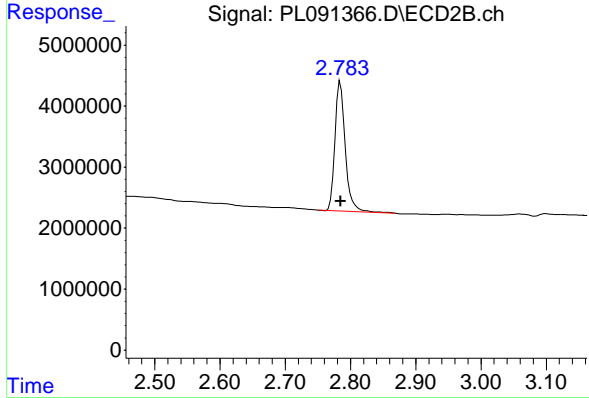




#1 Tetrachloro-m-xylene

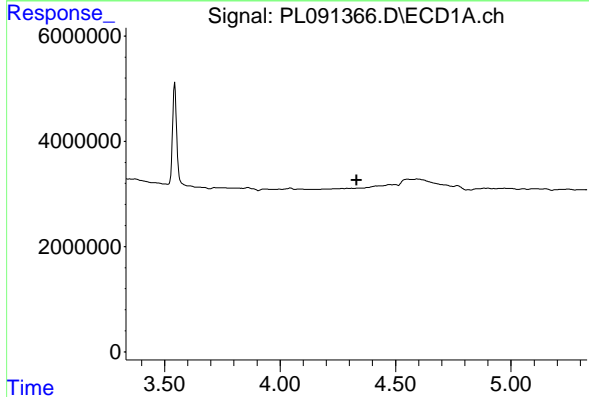
R.T.: 3.544 min
 Delta R.T.: 0.000 min
 Response: 24147311
 Conc: 11.25 ng/ml

Instrument : ECD_L
 ClientSampleId : CM-SOIL-PILE



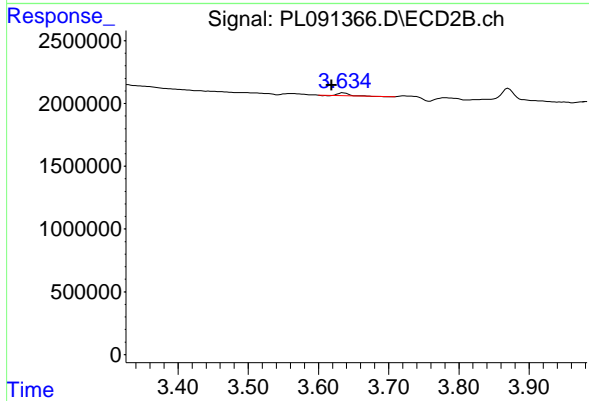
#1 Tetrachloro-m-xylene

R.T.: 2.784 min
 Delta R.T.: 0.000 min
 Response: 23278255
 Conc: 11.93 ng/ml



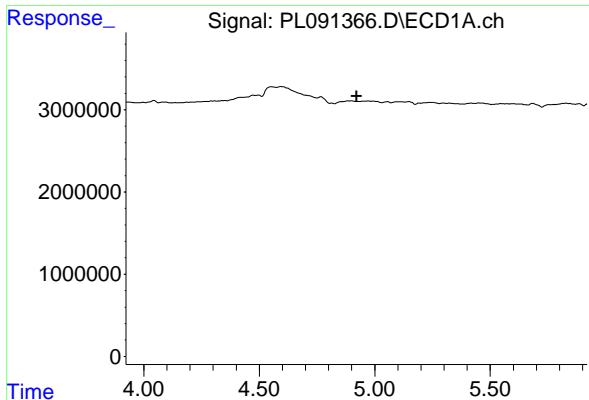
#3 gamma-BHC (Lindane)

R.T.: 0.000 min
 Exp R.T. : 4.332 min
 Response: 0
 Conc: N.D.



#3 gamma-BHC (Lindane)

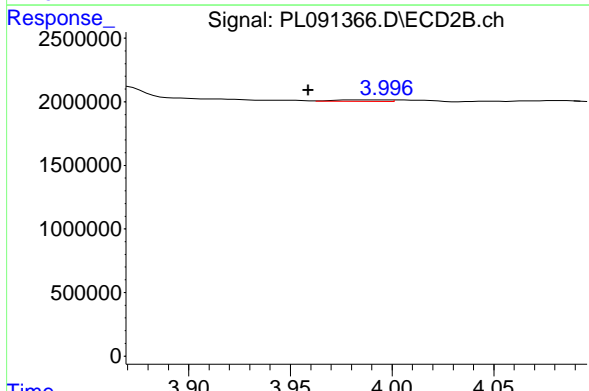
R.T.: 3.635 min
 Delta R.T.: 0.017 min
 Response: 209622
 Conc: 0.08 ng/ml



#4 Heptachlor

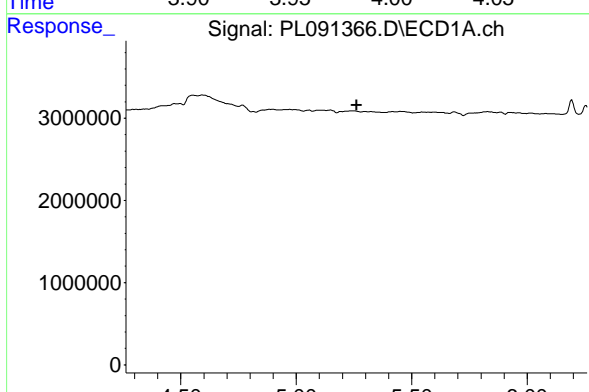
R.T.: 0.000 min
 Exp R.T.: 4.921 min
 Response: 0
 Conc: N.D.

Instrument : ECD_L
 ClientSampleId : CM-SOIL-PILE



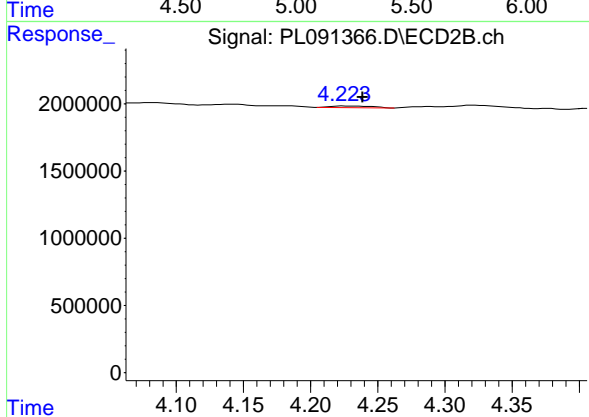
#4 Heptachlor

R.T.: 3.981 min
 Delta R.T.: 0.023 min
 Response: 217786
 Conc: 0.08 ng/ml



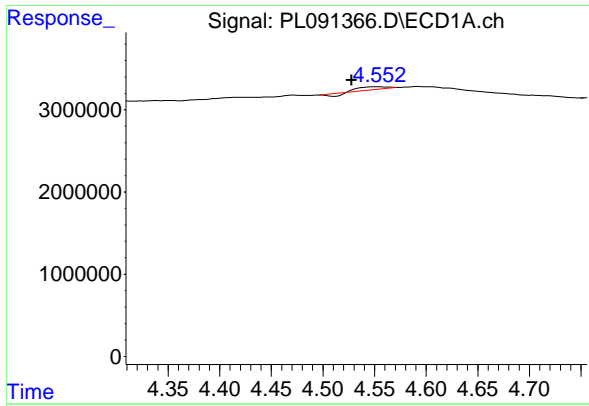
#5 Aldrin

R.T.: 0.000 min
 Exp R.T.: 5.262 min
 Response: 0
 Conc: N.D.



#5 Aldrin

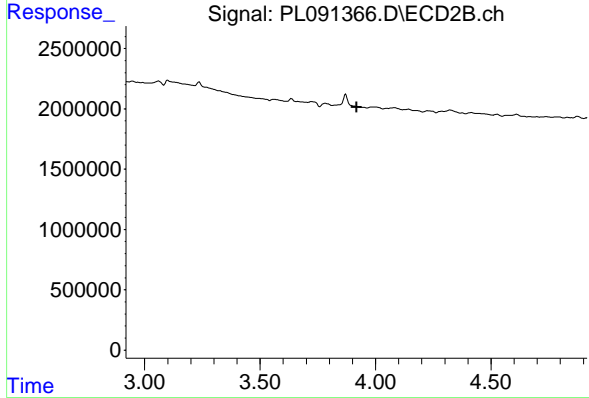
R.T.: 4.224 min
 Delta R.T.: -0.015 min
 Response: 270363
 Conc: 0.11 ng/ml



#6 beta-BHC

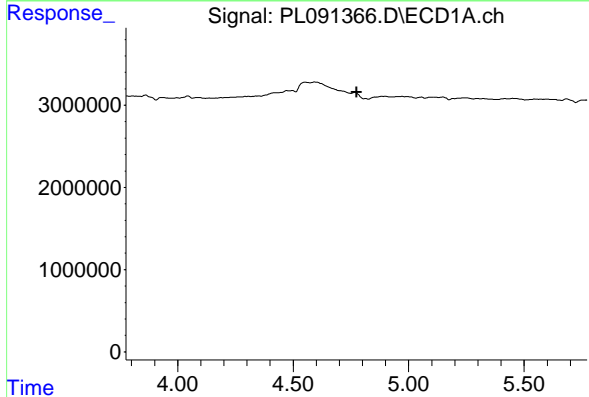
R.T.: 4.553 min
 Delta R.T.: 0.026 min
 Response: 314742
 Conc: 0.23 ng/ml

Instrument :
 ECD_L
 ClientSampleId :
 CM-SOIL-PILE



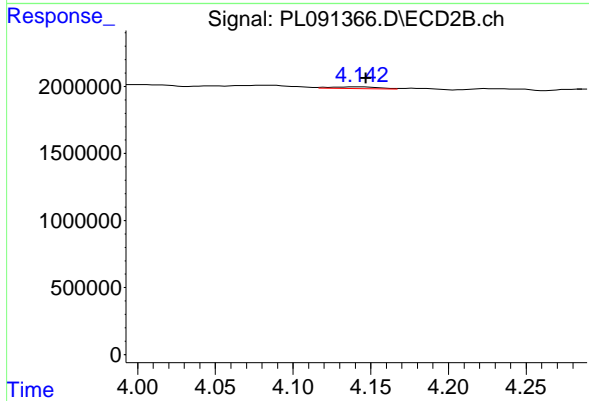
#6 beta-BHC

R.T.: 0.000 min
 Exp R.T. : 3.917 min
 Response: 0
 Conc: N.D.



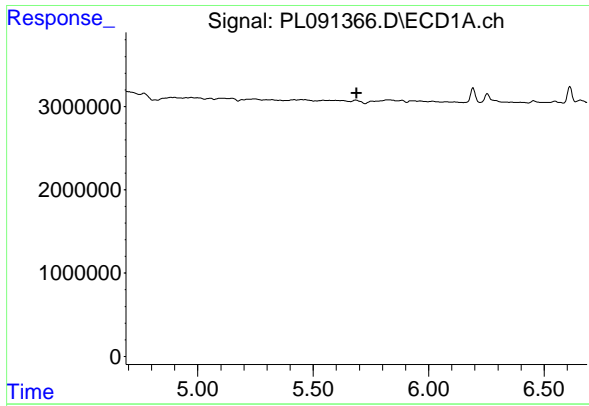
#7 delta-BHC

R.T.: 0.000 min
 Exp R.T. : 4.775 min
 Response: 0
 Conc: N.D.



#7 delta-BHC

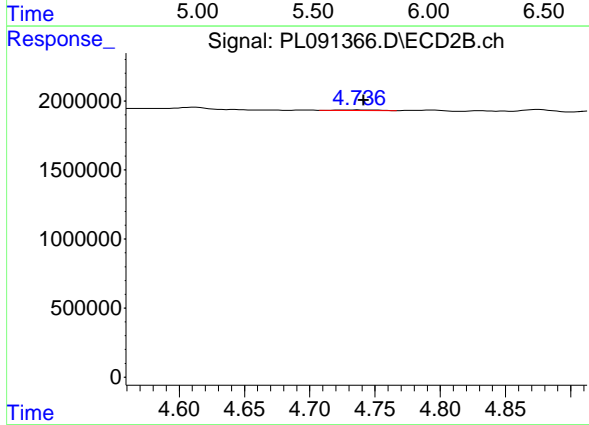
R.T.: 4.143 min
 Delta R.T.: -0.004 min
 Response: 287986
 Conc: 0.11 ng/ml



#8 Heptachlor epoxide

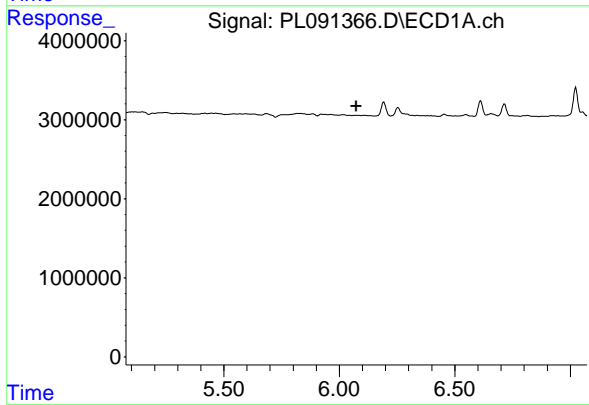
R.T.: 0.000 min
 Exp R.T.: 5.688 min
 Response: 0
 Conc: N.D.

Instrument : ECD_L
 ClientSampleId : CM-SOIL-PILE



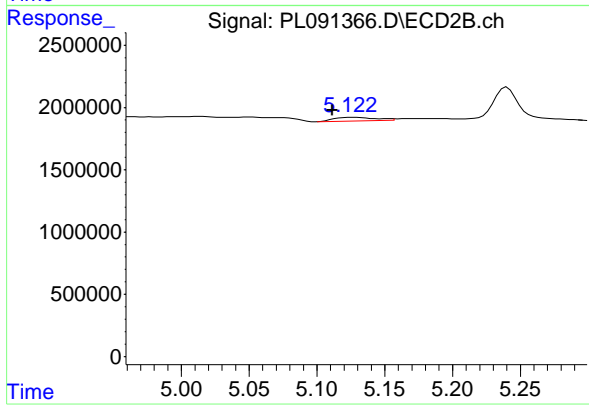
#8 Heptachlor epoxide

R.T.: 4.738 min
 Delta R.T.: -0.004 min
 Response: 83277
 Conc: 0.04 ng/ml



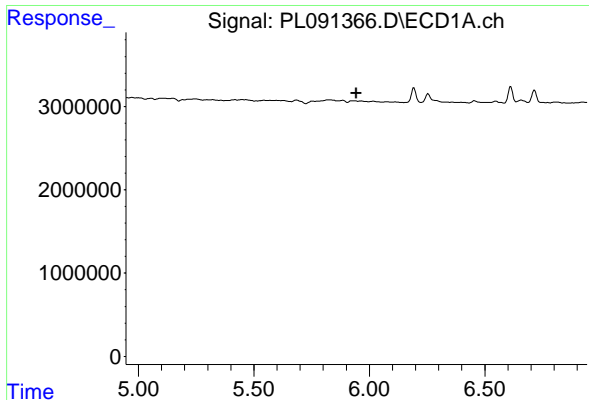
#9 Endosulfan I

R.T.: 0.000 min
 Exp R.T.: 6.073 min
 Response: 0
 Conc: N.D.



#9 Endosulfan I

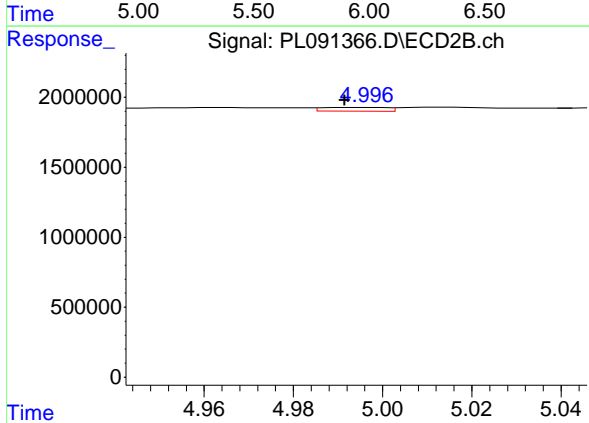
R.T.: 5.126 min
 Delta R.T.: 0.014 min
 Response: 649680
 Conc: 0.31 ng/ml



#10 gamma-Chlordane

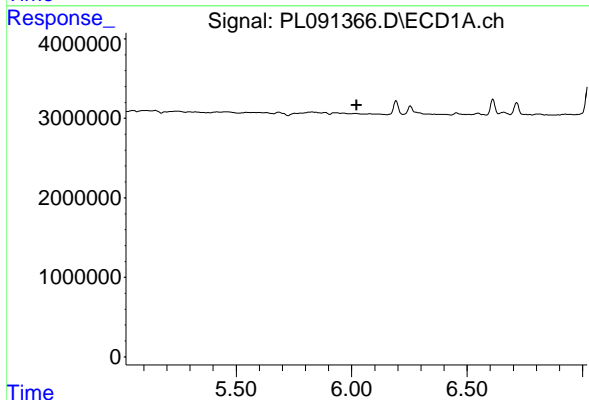
R.T.: 0.000 min
 Exp R.T.: 5.943 min
 Response: 0
 Conc: N.D.

Instrument :
 ECD_L
 ClientSampleId :
 CM-SOIL-PILE



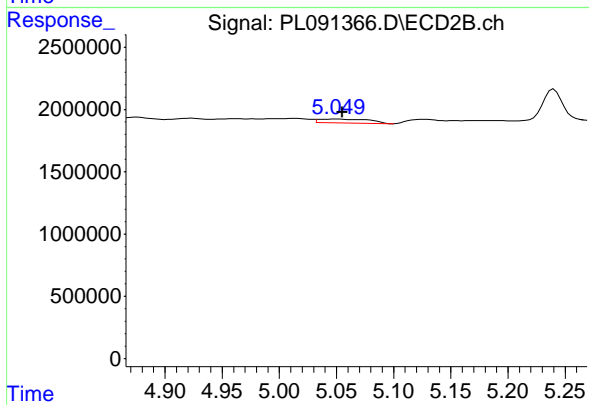
#10 gamma-Chlordane

R.T.: 4.995 min
 Delta R.T.: 0.004 min
 Response: 277066
 Conc: 0.12 ng/ml



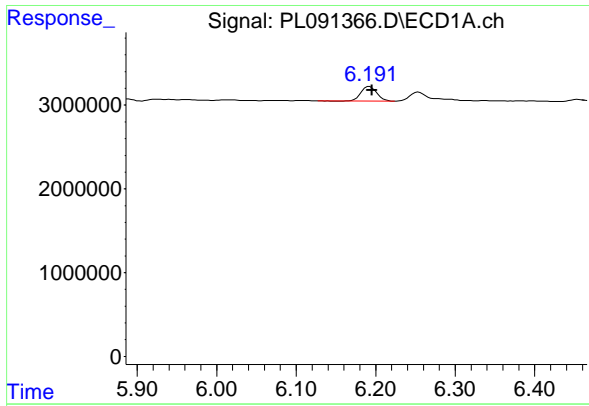
#11 alpha-Chlordane

R.T.: 0.000 min
 Exp R.T.: 6.022 min
 Response: 0
 Conc: N.D.



#11 alpha-Chlordane

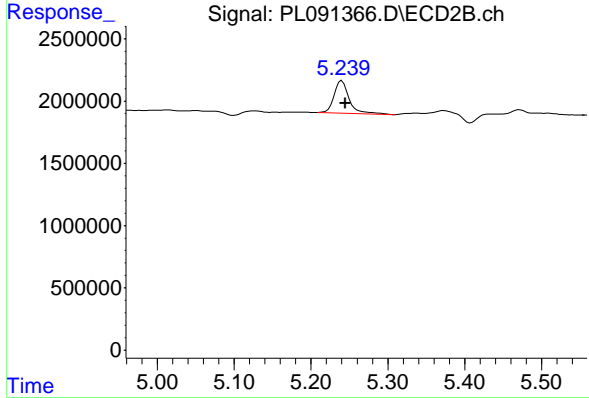
R.T.: 5.050 min
 Delta R.T.: -0.005 min
 Response: 1016631
 Conc: 0.43 ng/ml



#12 4,4' -DDE

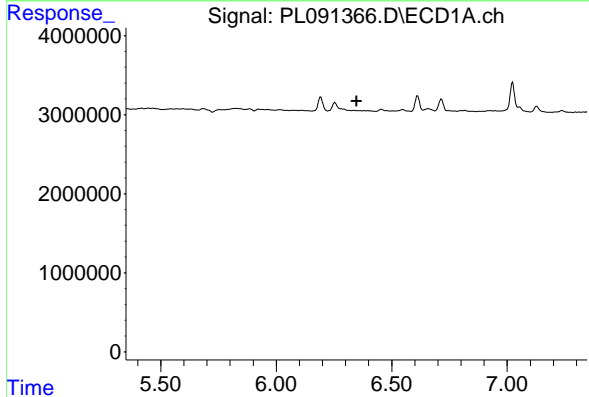
R.T.: 6.192 min
 Delta R.T.: -0.003 min
 Response: 2367333
 Conc: 1.13 ng/ml

Instrument : ECD_L
 ClientSampleId : CM-SOIL-PILE



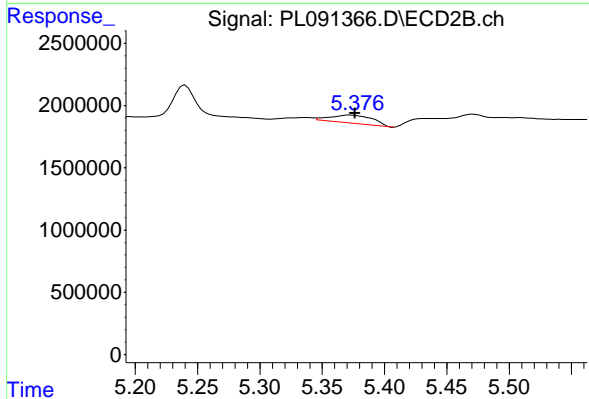
#12 4,4' -DDE

R.T.: 5.240 min
 Delta R.T.: -0.004 min
 Response: 3503837
 Conc: 1.68 ng/ml



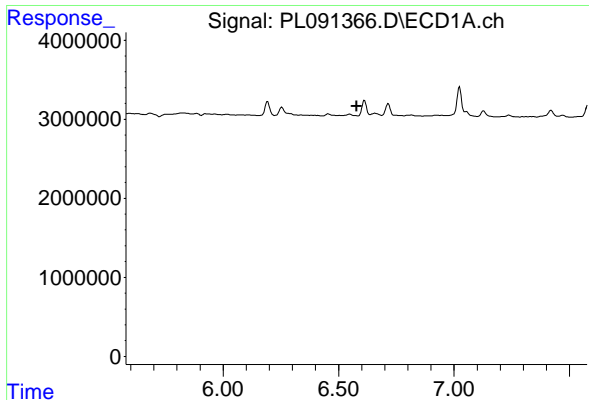
#13 Dieldrin

R.T.: 0.000 min
 Exp R.T. : 6.348 min
 Response: 0
 Conc: N.D.



#13 Dieldrin

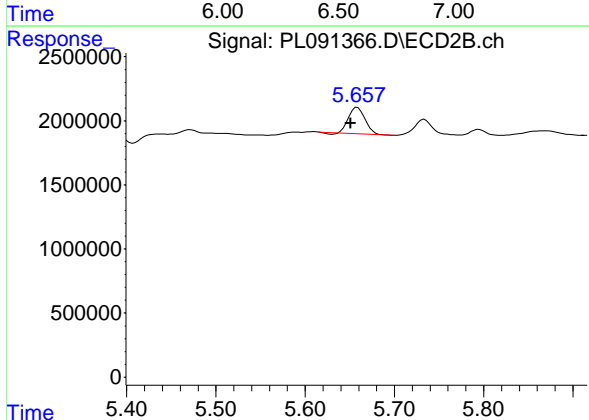
R.T.: 5.373 min
 Delta R.T.: -0.003 min
 Response: 1539146
 Conc: 0.68 ng/ml



#14 Endrin

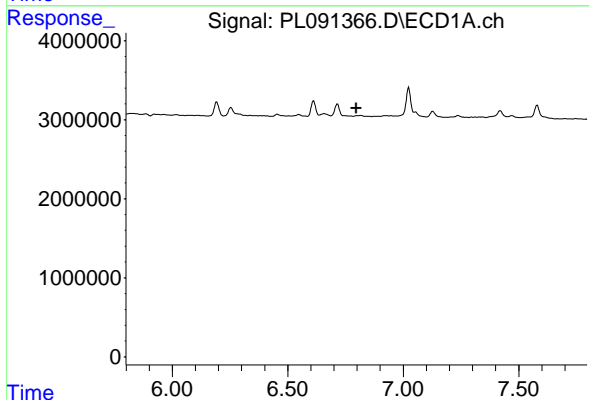
R.T.: 0.000 min
 Exp R.T.: 6.577 min
 Response: 0
 Conc: N.D.

Instrument :
 ECD_L
 ClientSampleId :
 CM-SOIL-PILE



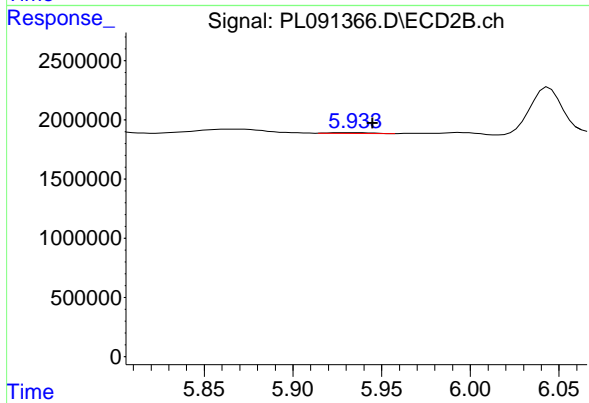
#14 Endrin

R.T.: 5.659 min
 Delta R.T.: 0.007 min
 Response: 2675361
 Conc: 1.31 ng/ml



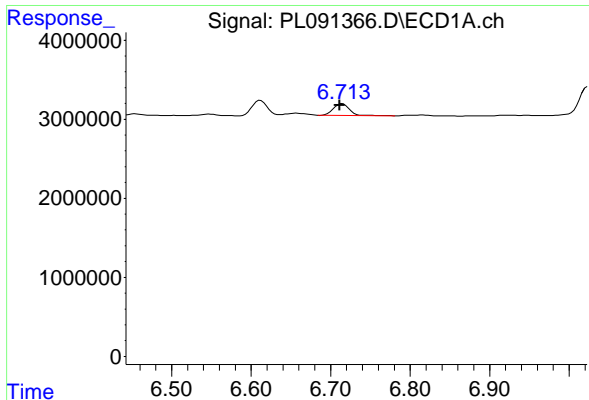
#15 Endosulfan II

R.T.: 0.000 min
 Exp R.T.: 6.796 min
 Response: 0
 Conc: N.D.



#15 Endosulfan II

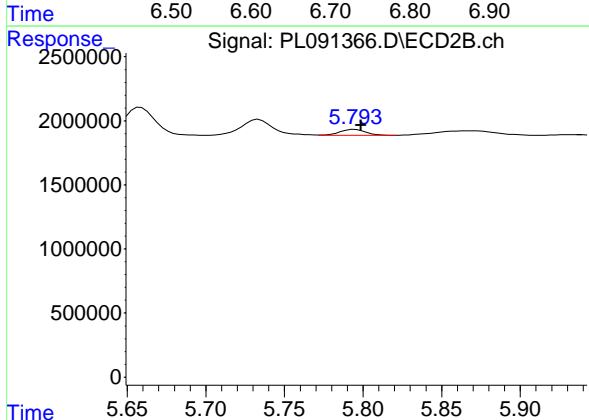
R.T.: 5.935 min
 Delta R.T.: -0.010 min
 Response: 89113
 Conc: 0.05 ng/ml



#16 4,4' -DDD

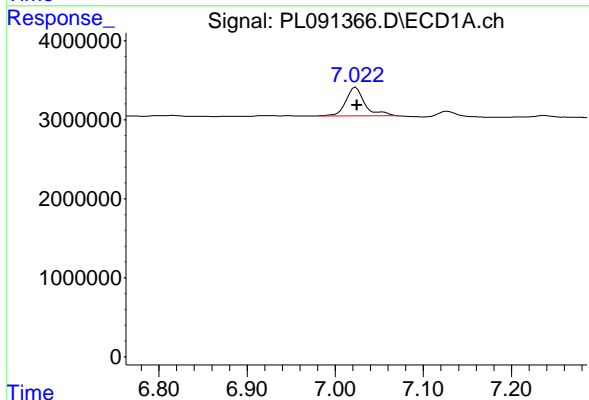
R.T.: 6.715 min
 Delta R.T.: 0.003 min
 Response: 2111848
 Conc: 1.40 ng/ml

Instrument : ECD_L
 Client SampleId : CM-SOIL-PILE



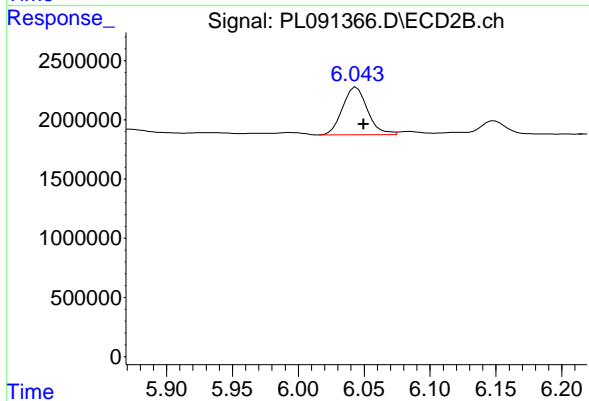
#16 4,4' -DDD

R.T.: 5.795 min
 Delta R.T.: -0.004 min
 Response: 544513
 Conc: 0.33 ng/ml



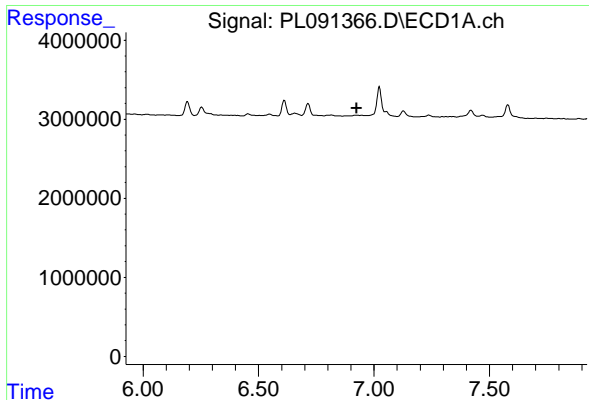
#17 4,4' -DDT

R.T.: 7.023 min
 Delta R.T.: -0.002 min
 Response: 5346521
 Conc: 3.01 ng/ml



#17 4,4' -DDT

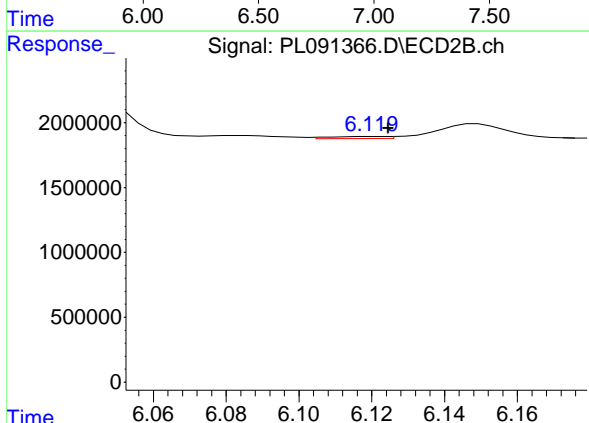
R.T.: 6.044 min
 Delta R.T.: -0.005 min
 Response: 5288968
 Conc: 2.98 ng/ml



#18 Endrin aldehyde

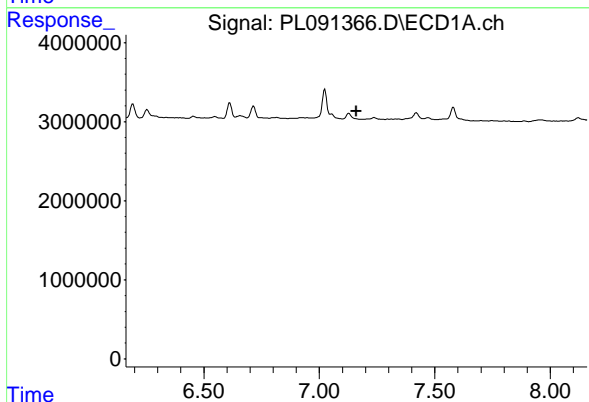
R.T.: 0.000 min
 Exp R.T.: 6.925 min
 Response: 0
 Conc: N.D.

Instrument : ECD_L
 ClientSampleId : CM-SOIL-PILE



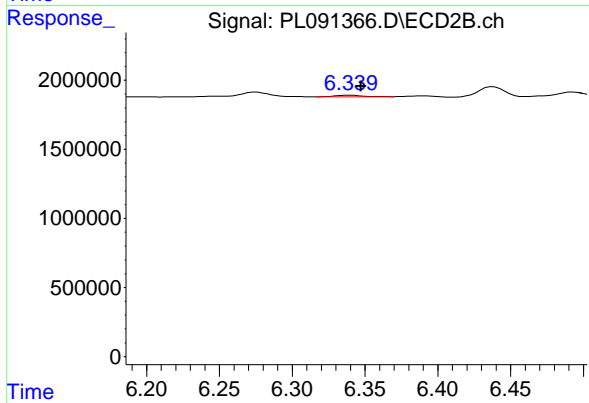
#18 Endrin aldehyde

R.T.: 6.121 min
 Delta R.T.: -0.003 min
 Response: 184920
 Conc: 0.12 ng/ml



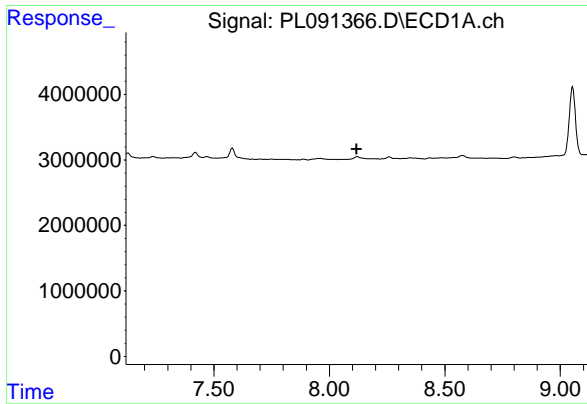
#19 Endosulfan Sulfate

R.T.: 0.000 min
 Exp R.T.: 7.160 min
 Response: 0
 Conc: N.D.



#19 Endosulfan Sulfate

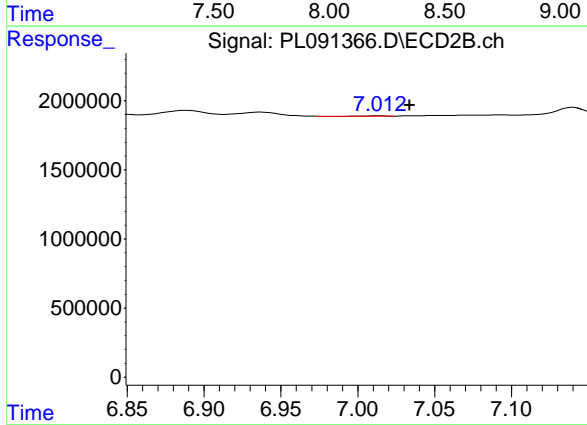
R.T.: 6.340 min
 Delta R.T.: -0.007 min
 Response: 183639
 Conc: 0.10 ng/ml



#22 Mirex

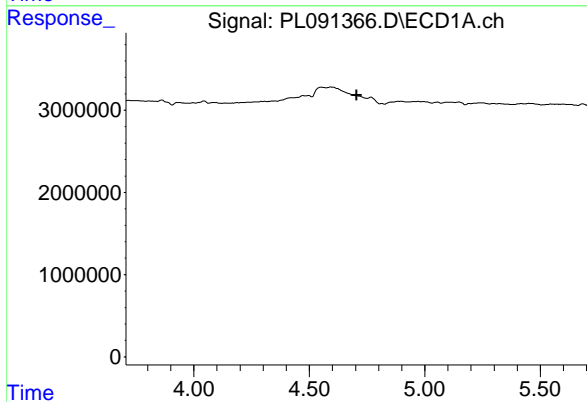
R.T.: 0.000 min
 Exp R.T.: 8.118 min
 Response: 0
 Conc: N.D.

Instrument : ECD_L
 ClientSampleId : CM-SOIL-PILE



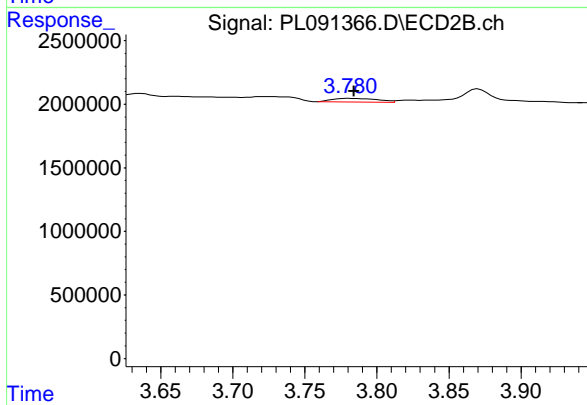
#22 Mirex

R.T.: 7.014 min
 Delta R.T.: -0.020 min
 Response: 18048
 Conc: 0.01 ng/ml



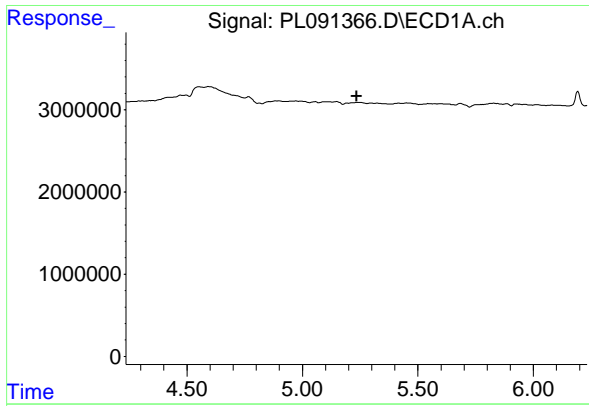
#23 Chlordane-1

R.T.: 0.000 min
 Exp R.T.: 4.706 min
 Response: 0
 Conc: N.D.



#23 Chlordane-1

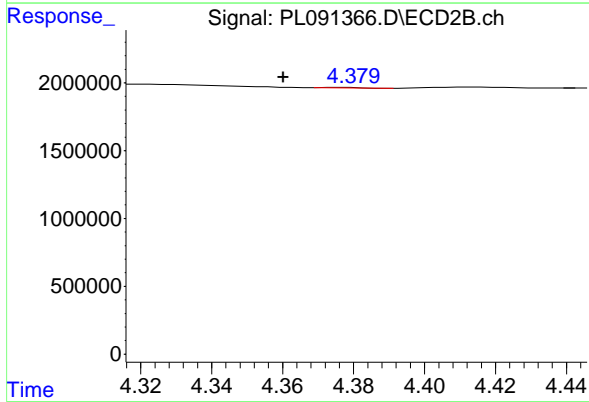
R.T.: 3.781 min
 Delta R.T.: -0.003 min
 Response: 641048
 Conc: 8.79 ng/ml



#24 Chlordane-2

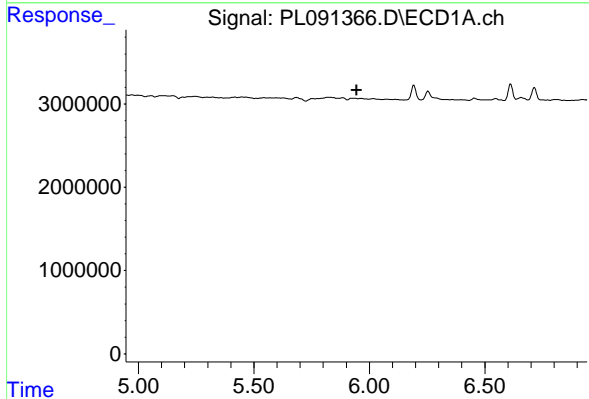
R.T.: 0.000 min
 Exp R.T.: 5.234 min
 Response: 0
 Conc: N.D.

Instrument :
 ECD_L
 ClientSampleId :
 CM-SOIL-PILE



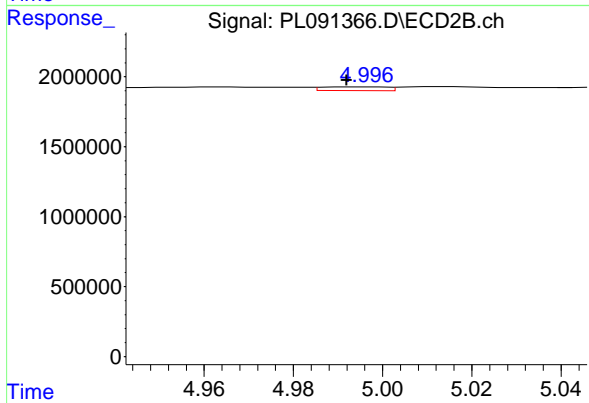
#24 Chlordane-2

R.T.: 4.377 min
 Delta R.T.: 0.017 min
 Response: 26570
 Conc: 0.28 ng/ml



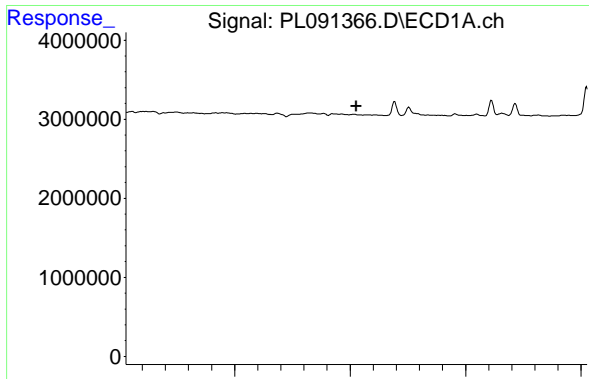
#25 Chlordane-3

R.T.: 0.000 min
 Exp R.T.: 5.944 min
 Response: 0
 Conc: N.D.



#25 Chlordane-3

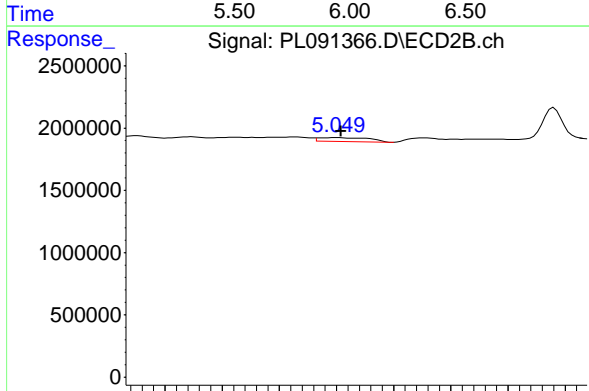
R.T.: 4.995 min
 Delta R.T.: 0.003 min
 Response: 277066
 Conc: 1.14 ng/ml



#26 Chlordane-4

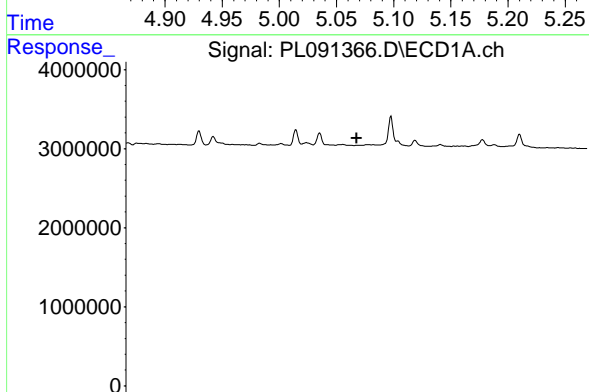
R.T.: 0.000 min
 Exp R.T.: 6.026 min
 Response: 0
 Conc: N.D.

Instrument : ECD_L
 ClientSampleId : CM-SOIL-PILE



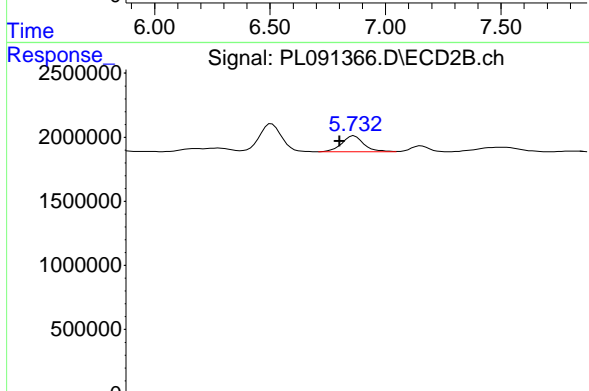
#26 Chlordane-4

R.T.: 5.050 min
 Delta R.T.: -0.004 min
 Response: 1016631
 Conc: 4.36 ng/ml



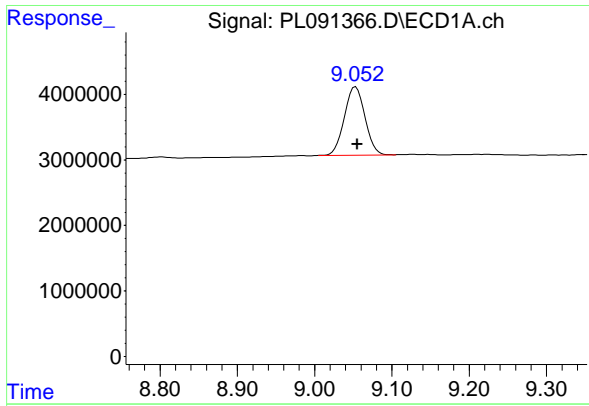
#27 Chlordane-5

R.T.: 0.000 min
 Exp R.T.: 6.875 min
 Response: 0
 Conc: N.D.



#27 Chlordane-5

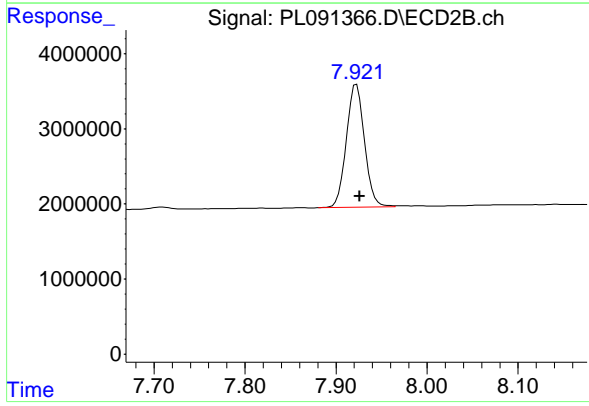
R.T.: 5.734 min
 Delta R.T.: 0.013 min
 Response: 1765007
 Conc: 25.49 ng/ml



#28 Decachlorobiphenyl

R.T.: 9.053 min
Delta R.T.: -0.002 min
Response: 19223481
Conc: 12.61 ng/ml

Instrument :
ECD_L
ClientSampleId :
CM-SOIL-PILE



#28 Decachlorobiphenyl

R.T.: 7.922 min
Delta R.T.: -0.003 min
Response: 22704469
Conc: 11.99 ng/ml