

Data Path : Z:\pestpcbsrv\HPCHEM1\ECD_L\Data\PL082818\
 Data File : PL039554.D
 Signal(s) : Signal #1: ECD1A.ch Signal #2: ECD2B.ch
 Acq On : 28 Aug 2018 12:15
 Operator : AJ\SJ
 Sample : I.BLK
 Misc :
 ALS Vial : 2 Sample Multiplier: 1

Instrument :
 ECD_L
 ClientSampleId :

Integration File signal 1: autoint1.e
 Integration File signal 2: autoint2.e
 Quant Time: Aug 28 13:05:26 2018
 Quant Method : Z:\pestpcbsrv\HPCHEM1\ECD_L\methods\PL081318.M
 Quant Title : GC Extractables
 QLast Update : Wed Aug 15 15:04:22 2018
 Response via : Initial Calibration
 Integrator: ChemStation

Volume Inj. : 2 µl
 Signal #1 Phase : ZB-MR1 Signal #2 Phase: ZB-MR2
 Signal #1 Info : 30M x 0.32mm x0.5 Signal #2 Info : 30M x 0.32mm x0.25µm

Compound	RT#1	RT#2	Resp#1	Resp#2	ng/ml	ng/ml

System Monitoring Compounds						
1) SA Tetrachlo...	3.303	3.905	168.5E6	71025827	24.112	26.493
2) SA Decachlor...	7.959	8.892	169.1E6	62759942	24.076	27.045
Target Compounds						
3) MA gamma-BHC...	0.000	4.524f	0	8001664	N.D.	1.987 #
21) B Endrin ke...	6.884f	0.000	1626798	0	0.189	N.D. #
23) Chlordane-1	4.213	0.000	9411897	0	29.729	N.D. #

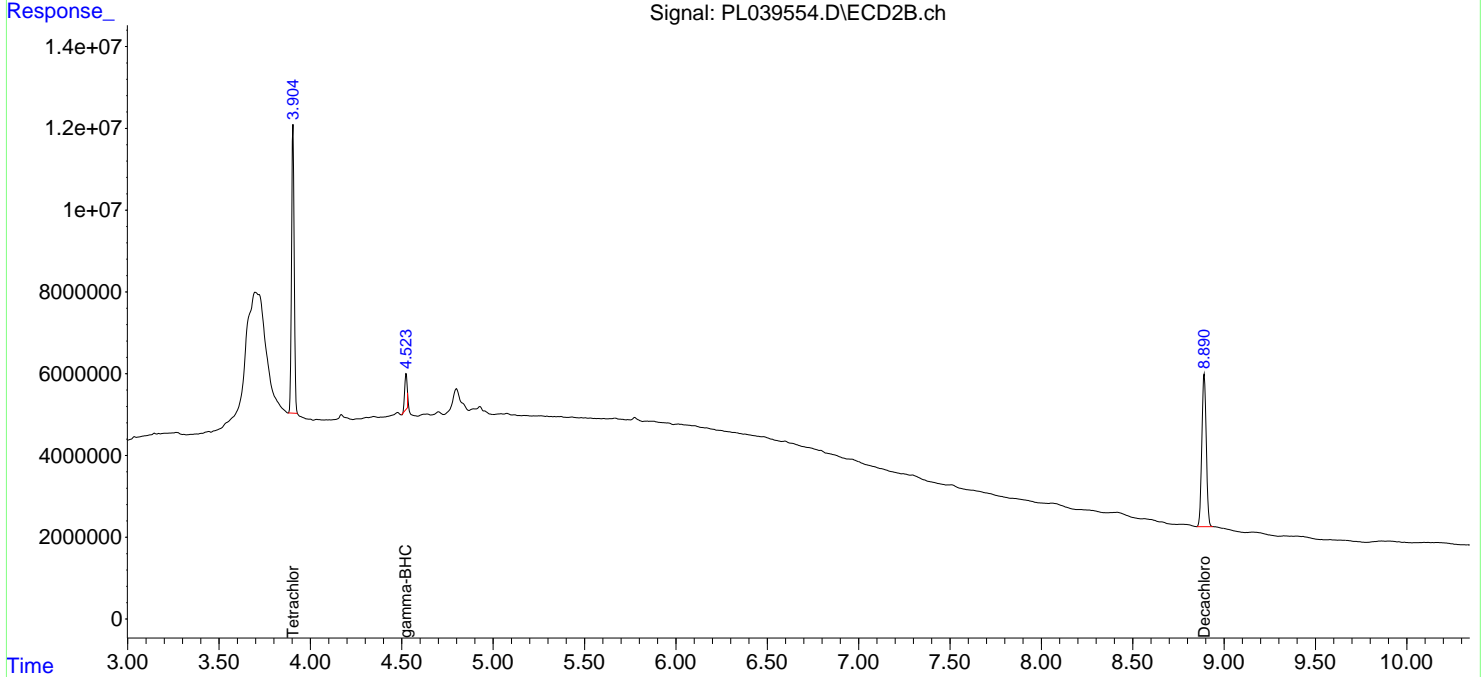
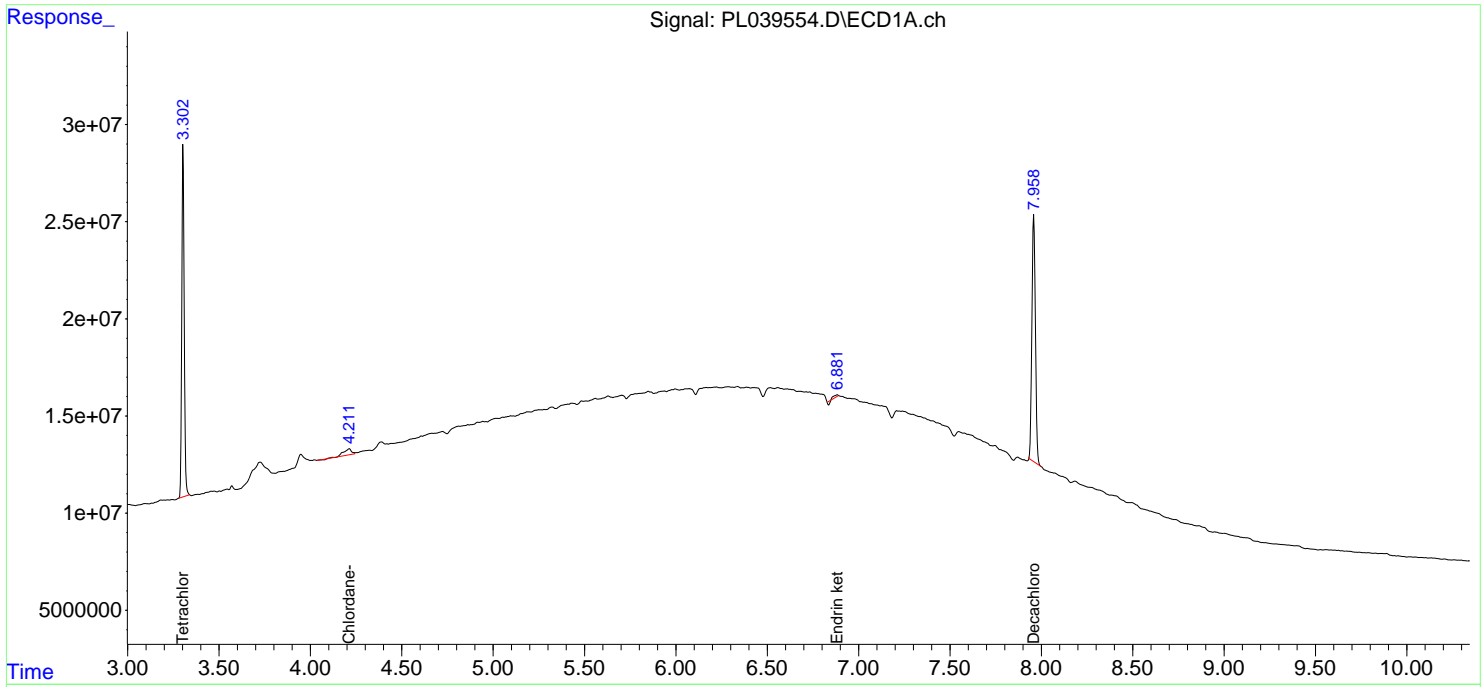
(f)=RT Delta > 1/2 Window (#)=Amounts differ by > 25% (m)=manual int.

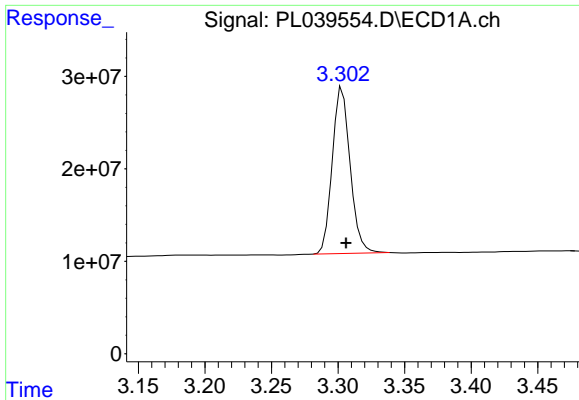
Data Path : Z:\pestpcbsrv\HPCHEM1\ECD_L\Data\PL082818\
 Data File : PL039554.D
 Signal(s) : Signal #1: ECD1A.ch Signal #2: ECD2B.ch
 Acq On : 28 Aug 2018 12:15
 Operator : AJ\SJ
 Sample : I.BLK
 Misc :
 ALS Vial : 2 Sample Multiplier: 1

Instrument :
 ECD_L
 ClientSampled :

Integration File signal 1: autoint1.e
 Integration File signal 2: autoint2.e
 Quant Time: Aug 28 13:05:26 2018
 Quant Method : Z:\pestpcbsrv\HPCHEM1\ECD_L\methods\PL081318.M
 Quant Title : GC Extractables
 QLast Update : Wed Aug 15 15:04:22 2018
 Response via : Initial Calibration
 Integrator: ChemStation

Volume Inj. : 2 µl
 Signal #1 Phase : ZB-MR1 Signal #2 Phase: ZB-MR2
 Signal #1 Info : 30M x 0.32mm x0.5 Signal #2 Info : 30M x 0.32mm x0.25µm

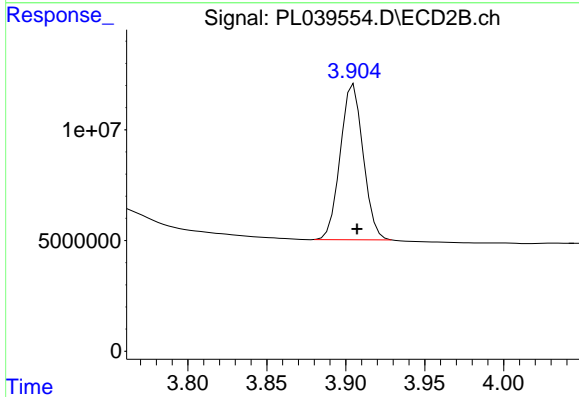




#1 Tetrachloro-m-xylene

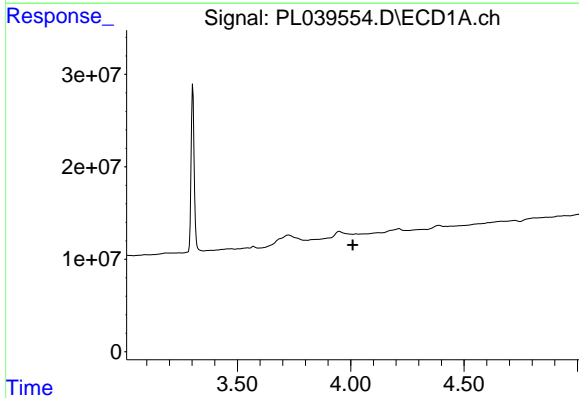
R.T.: 3.303 min
 Delta R.T.: -0.003 min
 Response: 168549558
 Conc: 24.11 ng/ml

Instrument :
 ECD_L
 ClientSampleId :



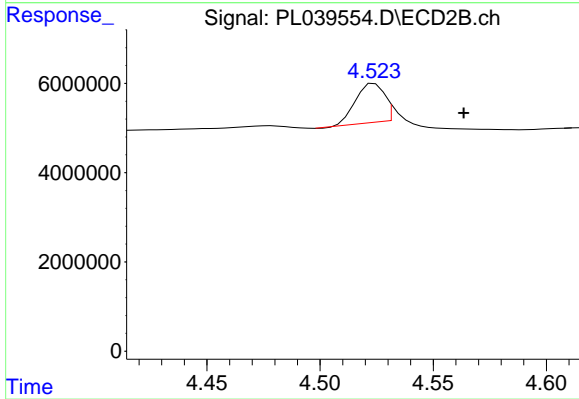
#1 Tetrachloro-m-xylene

R.T.: 3.905 min
 Delta R.T.: -0.002 min
 Response: 71025827
 Conc: 26.49 ng/ml



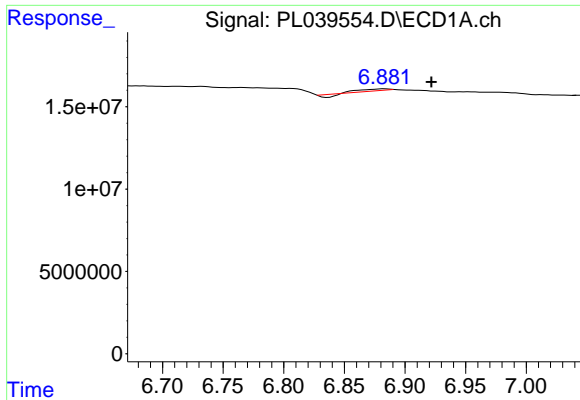
#3 gamma-BHC (Lindane)

R.T.: 0.000 min
 Exp R.T. : 4.009 min
 Response: 0
 Conc: N.D.



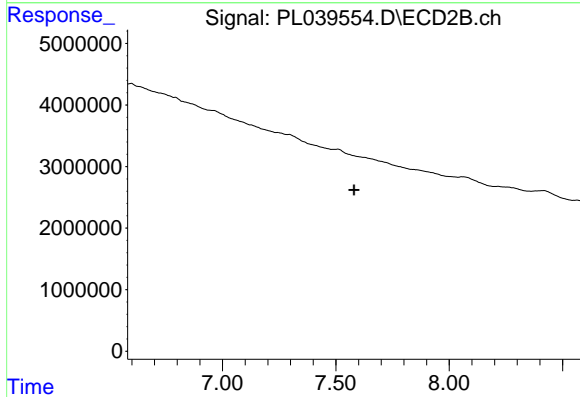
#3 gamma-BHC (Lindane)

R.T.: 4.524 min
 Delta R.T.: -0.039 min
 Response: 8001664
 Conc: 1.99 ng/ml

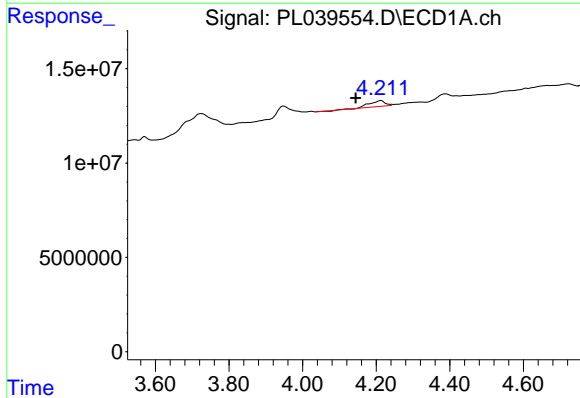


#21 Endrin ketone
 R.T.: 6.884 min
 Delta R.T.: -0.038 min
 Response: 1626798
 Conc: 0.19 ng/ml

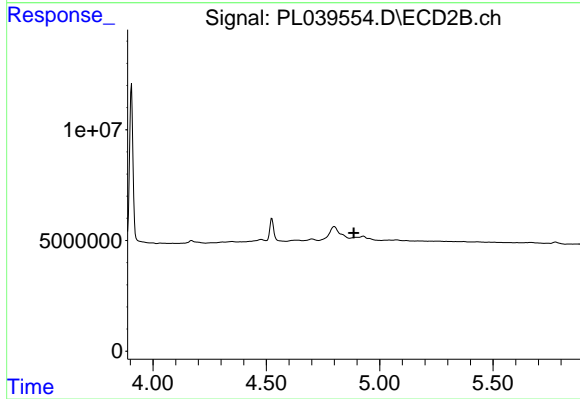
Instrument :
 ECD_L
 ClientSampleId :



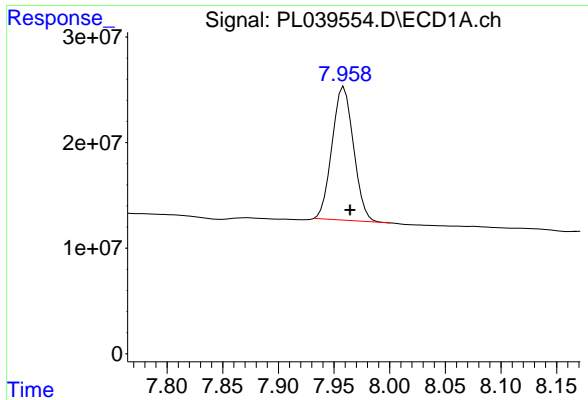
#21 Endrin ketone
 R.T.: 0.000 min
 Exp R.T. : 7.580 min
 Response: 0
 Conc: N.D.



#23 Chlordane-1
 R.T.: 4.213 min
 Delta R.T.: 0.069 min
 Response: 9411897
 Conc: 29.73 ng/ml



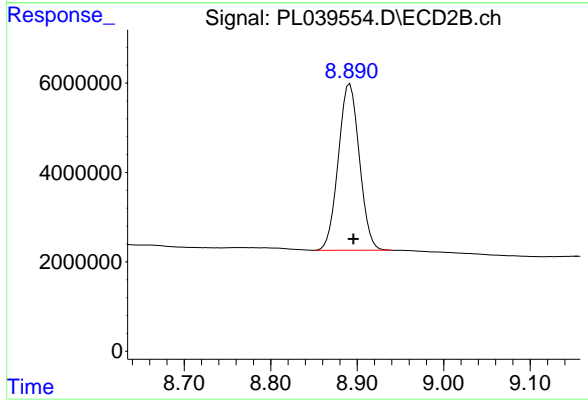
#23 Chlordane-1
 R.T.: 0.000 min
 Exp R.T. : 4.885 min
 Response: 0
 Conc: N.D.



#28 Decachlorobiphenyl

R.T.: 7.959 min
Delta R.T.: -0.005 min
Response: 169098073
Conc: 24.08 ng/ml

Instrument :
ECD_L
ClientSampleId :



#28 Decachlorobiphenyl

R.T.: 8.892 min
Delta R.T.: -0.004 min
Response: 62759942
Conc: 27.04 ng/ml