

Data Path : Z:\pestpcbsrv\HPCHEM1\ECD_L\Data\PL082820\
 Data File : PL061074.D
 Signal(s) : Signal #1: ECD1A.ch Signal #2: ECD2B.ch
 Acq On : 28 Aug 2020 18:38
 Operator : DD\AJ
 Sample : PSTDCCC050
 Misc :
 ALS Vial : 4 Sample Multiplier: 1

Instrument :
 ECD_L
 ClientSampleId :

Integration File signal 1: autoint1.e
 Integration File signal 2: autoint2.e
 Quant Time: Aug 28 18:51:13 2020
 Quant Method : Z:\pestpcbsrv\HPCHEM1\ECD_L\methods\PL082520.M
 Quant Title : GC Extractables
 QLast Update : Tue Aug 25 16:59:57 2020
 Response via : Initial Calibration
 Integrator: ChemStation

Volume Inj. : 1 µl
 Signal #1 Phase : ZB-MR2 Signal #2 Phase: ZB-MR1
 Signal #1 Info : 30M x 0.32mm x0.2 Signal #2 Info : 30M x 0.32mm x0.5µm

Compound	RT#1	RT#2	Resp#1	Resp#2	ng/ml	ng/ml
System Monitoring Compounds						
1) SA Tetrachlo...	3.461	4.010	90071711	126.8E6	48.809	48.798
28) SA Decachlor...	8.215	9.099	78833525	108.4E6	46.796	51.395
Target Compounds						
2) A alpha-BHC	3.898	4.399	138.2E6	199.1E6	48.883	49.011
3) MA gamma-BHC...	4.181	4.685	124.0E6	183.1E6	48.559	48.691
4) MA Heptachlor	4.483	5.196	114.7E6	178.5E6	48.890	48.774
5) MB Aldrin	4.731	5.502	102.1E6	163.3E6	48.946	48.440
6) B beta-BHC	4.432	4.856	50941874	75374634	49.870	50.611
7) B delta-BHC	4.636	5.073	117.7E6	156.9E6	49.523	57.115
8) B Heptachlo...	5.174	5.889	97782799	146.3E6	49.596	55.943
9) A Endosulfan I	5.513	6.248	90070221	138.6E6	49.567	48.213
10) B gamma-Chl...	5.402	6.125	97155166	151.9E6	49.445	48.908
11) B alpha-Chl...	5.460	6.198	96640001	150.9E6	49.516	48.553
12) B 4,4'-DDE	5.625	6.355	88700903	137.2E6	48.206	47.473
13) MA Dieldrin	5.756	6.506	93951945	142.1E6	48.819	47.576
14) MA Endrin	6.012	6.724	83902993	116.9E6	46.136	46.037
15) B Endosulfa...	6.285	6.934	85517131	122.7E6	47.909	47.699
16) A 4,4'-DDD	6.140	6.847	76510461	111.7E6	48.398	47.840
17) MA 4,4'-DDT	6.381	7.147	71782741	107.1E6	47.488	46.488
18) B Endrin al...	6.453	7.058	72980700	104.5E6	48.196	47.893
19) B Endosulfa...	6.667	7.282	83346635	117.6E6	48.669	48.504
20) A Methoxychlor	6.927	7.607	42952224	61491148	47.848	47.563
21) B Endrin ke...	7.157	7.754	94221796	123.5E6	48.812	49.618
22) Mirex	7.346	8.211	68308099	87477483	47.960	50.274
24) Chlordane-2	0.000	5.502f	0	163.3E6	N.D.	1586.404 #
25) Chlordane-3	5.402	6.125	97155166	151.9E6	538.308	380.069 #
26) Chlordane-4	5.460	6.198	96640001	150.9E6	649.960	313.997 #
27) Chlordane-5	6.285	0.000	85517131	0	1366.620	N.D. #

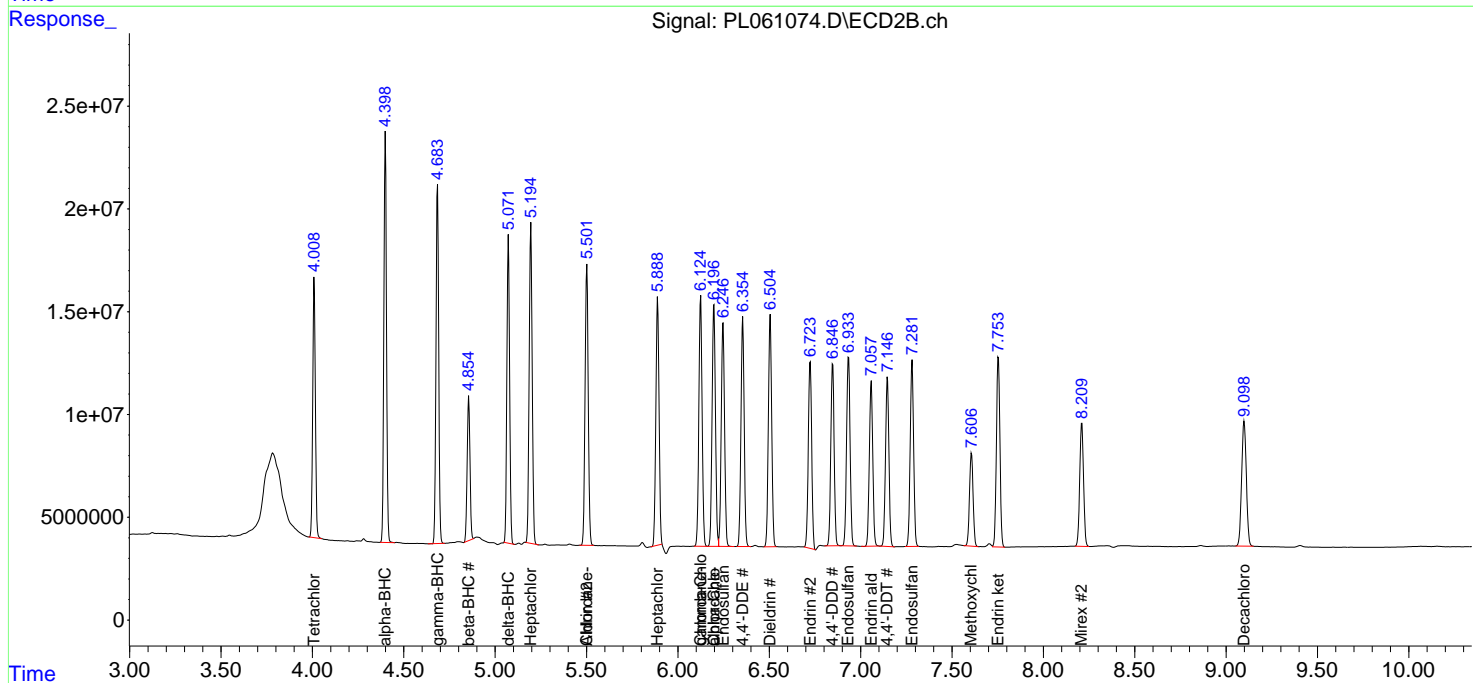
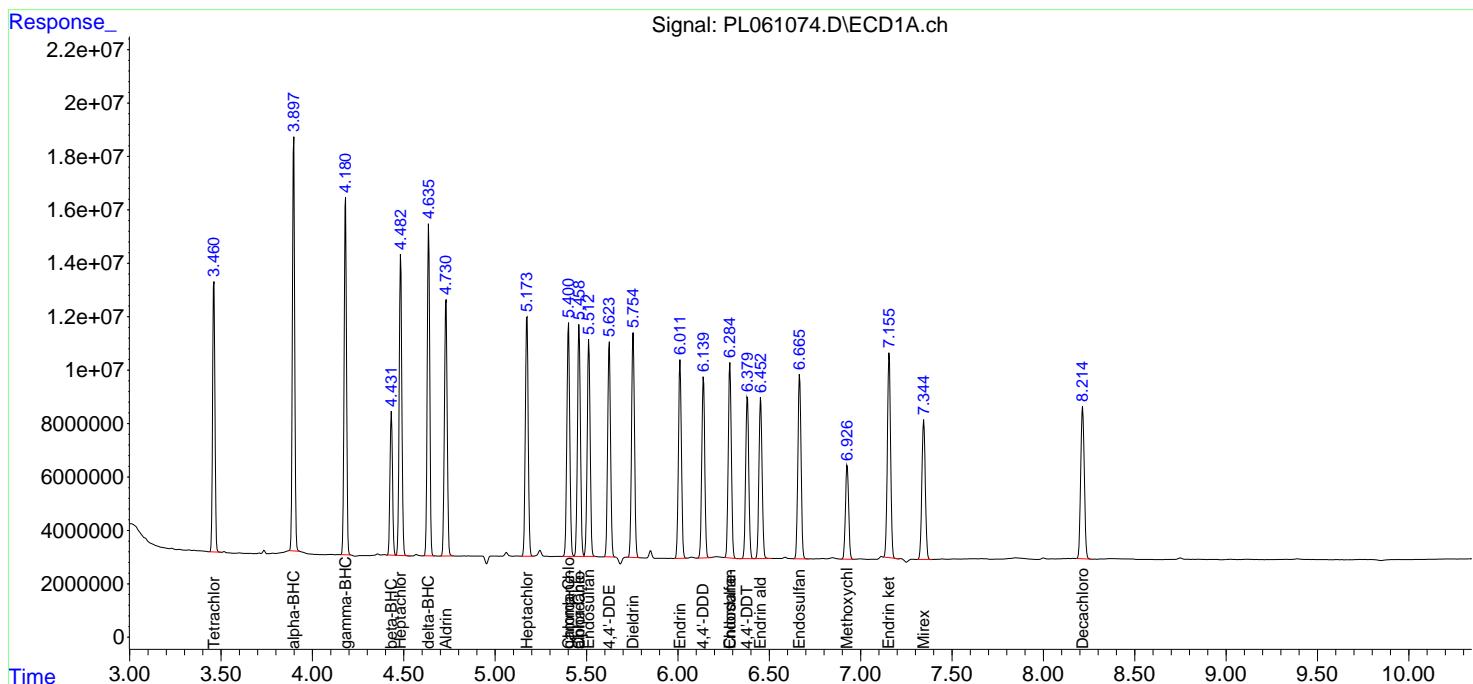
(f)=RT Delta > 1/2 Window (#)=Amounts differ by > 25% (m)=manual int.

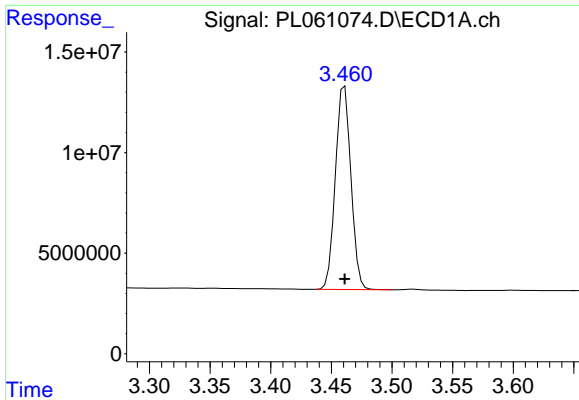
Data Path : Z:\pestpcbsrv\HPCHEM1\ECD_L\Data\PL082820\
 Data File : PL061074.D
 Signal(s) : Signal #1: ECD1A.ch Signal #2: ECD2B.ch
 Acq On : 28 Aug 2020 18:38
 Operator : DD\AJ
 Sample : PSTDCCC050
 Misc :
 ALS Vial : 4 Sample Multiplier: 1

Instrument :
 ECD_L
 ClientSampled :

Integration File signal 1: autoint1.e
 Integration File signal 2: autoint2.e
 Quant Time: Aug 28 18:51:13 2020
 Quant Method : Z:\pestpcbsrv\HPCHEM1\ECD_L\methods\PL082520.M
 Quant Title : GC Extractables
 QLast Update : Tue Aug 25 16:59:57 2020
 Response via : Initial Calibration
 Integrator: ChemStation

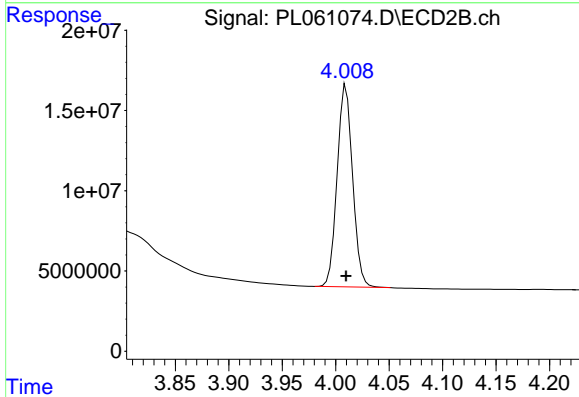
Volume Inj. : 1 µl
 Signal #1 Phase : ZB-MR2 Signal #2 Phase: ZB-MR1
 Signal #1 Info : 30M x 0.32mm x0.2 Signal #2 Info : 30M x 0.32mm x0.5µm



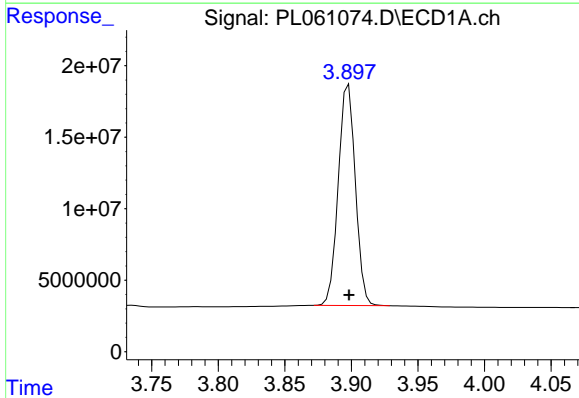


#1 Tetrachloro-m-xylene
 R.T.: 3.461 min
 Delta R.T.: 0.000 min
 Response: 90071711
 Conc: 48.81 ng/ml

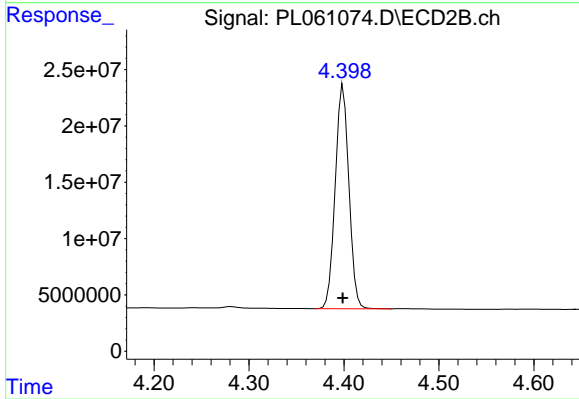
Instrument :
 ECD_L
 ClientSampleId :



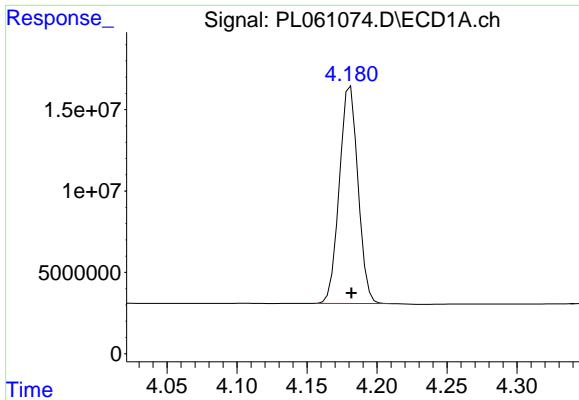
#1 Tetrachloro-m-xylene
 R.T.: 4.010 min
 Delta R.T.: 0.000 min
 Response: 126826584
 Conc: 48.80 ng/ml



#2 alpha-BHC
 R.T.: 3.898 min
 Delta R.T.: 0.000 min
 Response: 138233214
 Conc: 48.88 ng/ml

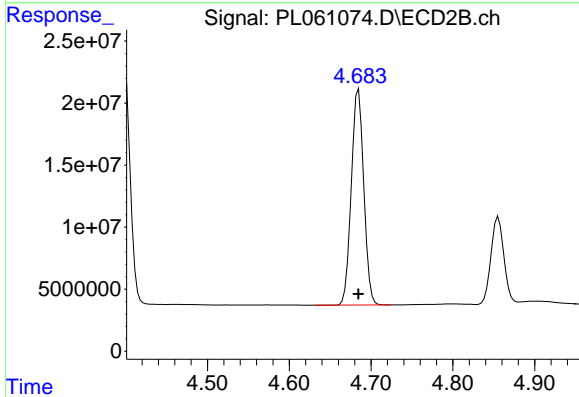


#2 alpha-BHC
 R.T.: 4.399 min
 Delta R.T.: 0.000 min
 Response: 199095723
 Conc: 49.01 ng/ml

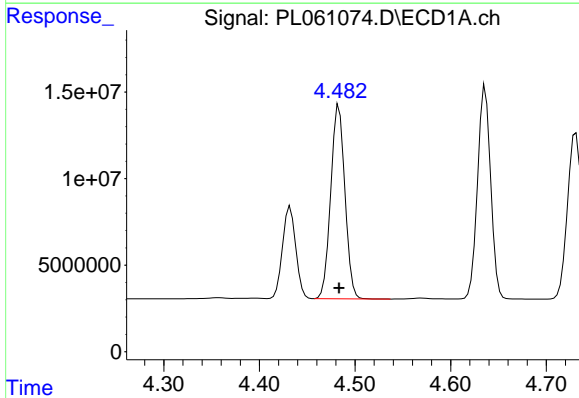


#3 gamma-BHC (Lindane)
 R.T.: 4.181 min
 Delta R.T.: 0.000 min
 Response: 123967950
 Conc: 48.56 ng/ml

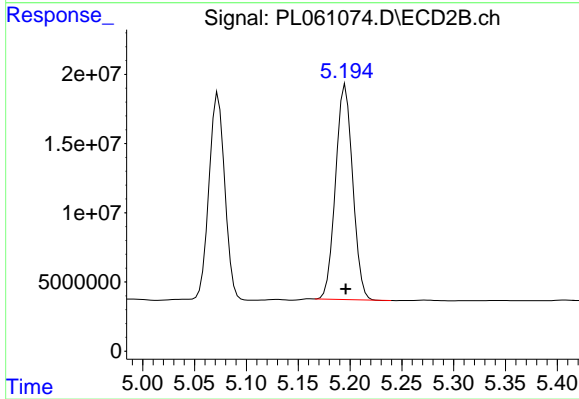
Instrument :
 ECD_L
 ClientSampleId :



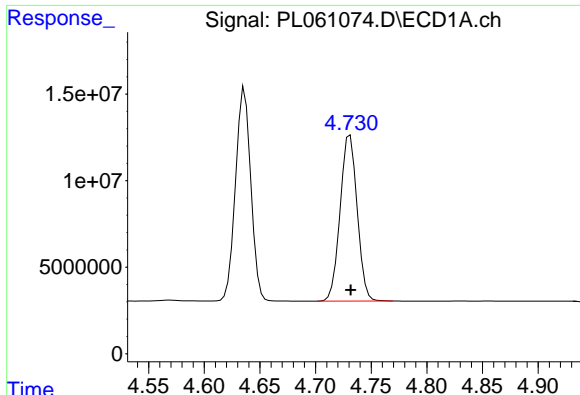
#3 gamma-BHC (Lindane)
 R.T.: 4.685 min
 Delta R.T.: 0.000 min
 Response: 183143158
 Conc: 48.69 ng/ml



#4 Heptachlor
 R.T.: 4.483 min
 Delta R.T.: 0.000 min
 Response: 114740554
 Conc: 48.89 ng/ml

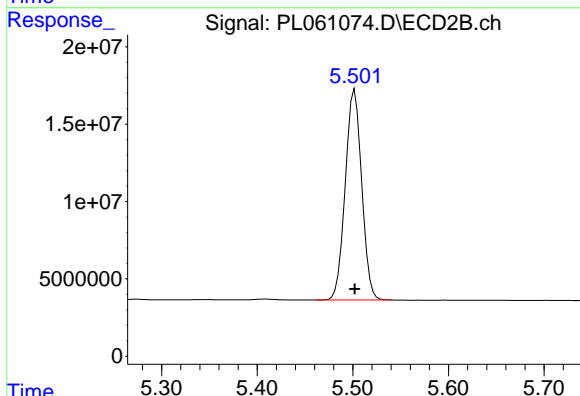


#4 Heptachlor
 R.T.: 5.196 min
 Delta R.T.: 0.000 min
 Response: 178468965
 Conc: 48.77 ng/ml

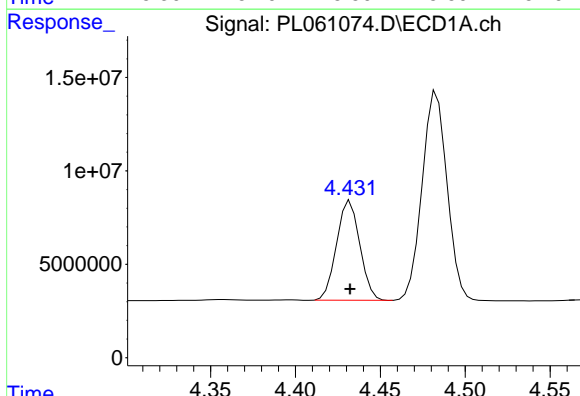


#5 Aldrin
 R.T.: 4.731 min
 Delta R.T.: 0.000 min
 Response: 102130181
 Conc: 48.95 ng/ml

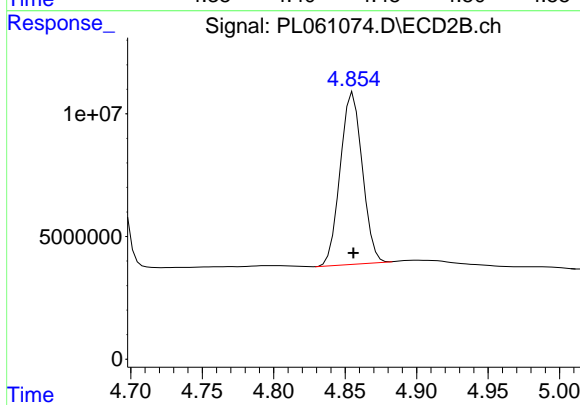
Instrument :
 ECD_L
 ClientSampled :



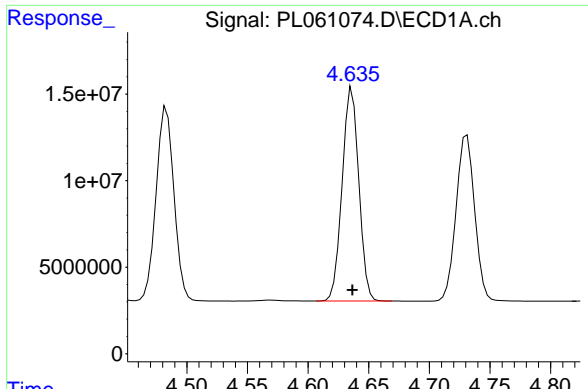
#5 Aldrin
 R.T.: 5.502 min
 Delta R.T.: 0.000 min
 Response: 163258508
 Conc: 48.44 ng/ml



#6 beta-BHC
 R.T.: 4.432 min
 Delta R.T.: 0.000 min
 Response: 50941874
 Conc: 49.87 ng/ml



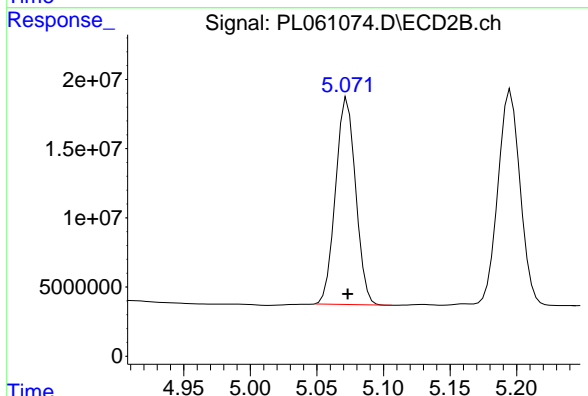
#6 beta-BHC
 R.T.: 4.856 min
 Delta R.T.: 0.000 min
 Response: 75374634
 Conc: 50.61 ng/ml



#7 delta-BHC

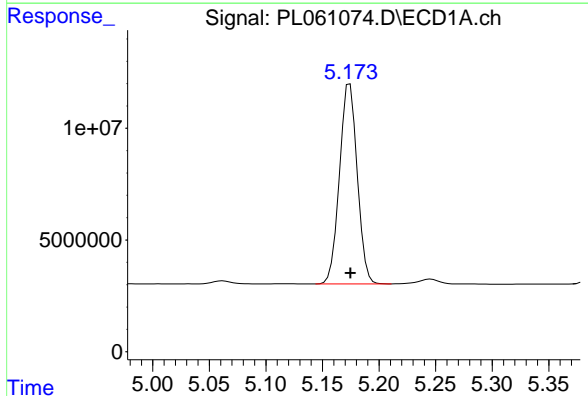
R.T.: 4.636 min
 Delta R.T.: 0.000 min
 Response: 117675577
 Conc: 49.52 ng/ml

Instrument :
 ECD_L
 ClientSampled :



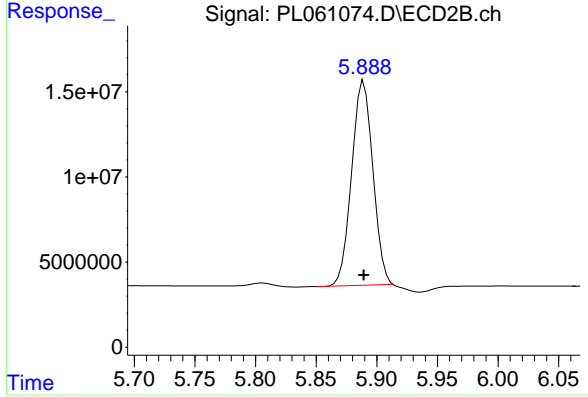
#7 delta-BHC

R.T.: 5.073 min
 Delta R.T.: 0.000 min
 Response: 156885150
 Conc: 57.11 ng/ml



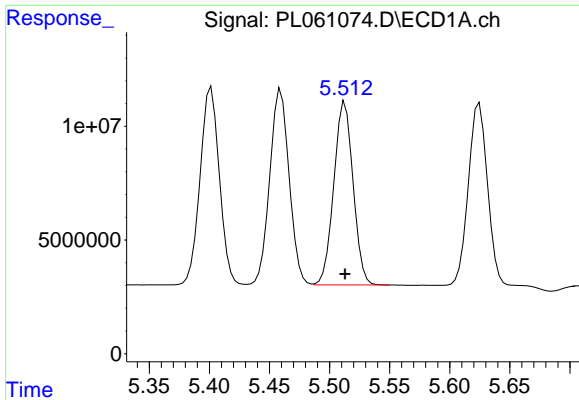
#8 Heptachlor epoxide

R.T.: 5.174 min
 Delta R.T.: 0.000 min
 Response: 97782799
 Conc: 49.60 ng/ml



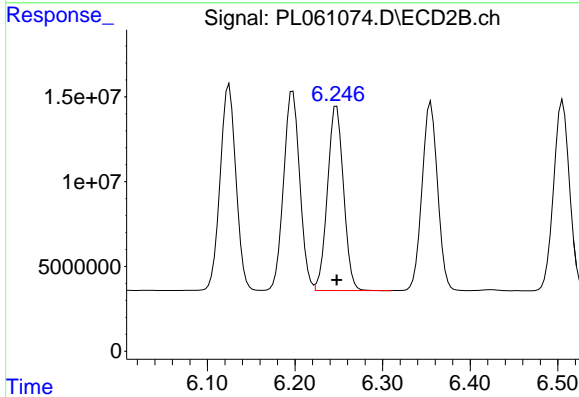
#8 Heptachlor epoxide

R.T.: 5.889 min
 Delta R.T.: 0.000 min
 Response: 146332114
 Conc: 55.94 ng/ml

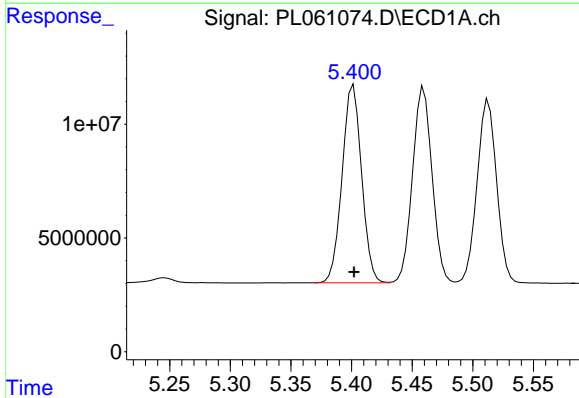


#9 Endosulfan I
 R.T.: 5.513 min
 Delta R.T.: 0.000 min
 Response: 90070221
 Conc: 49.57 ng/ml

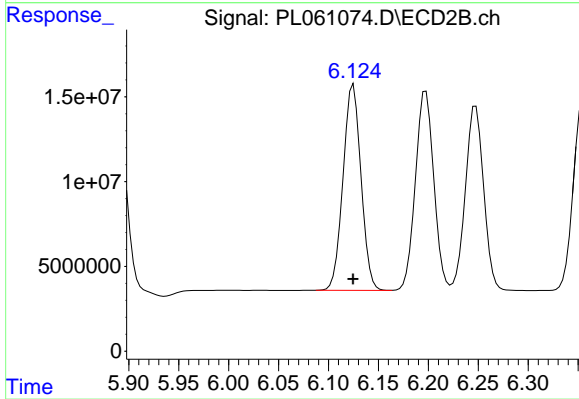
Instrument :
 ECD_L
 ClientSampleId :



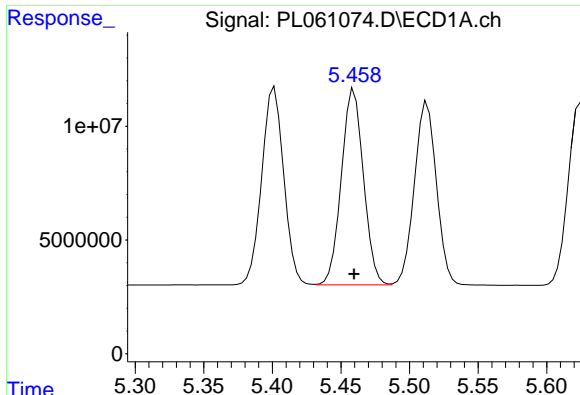
#9 Endosulfan I
 R.T.: 6.248 min
 Delta R.T.: 0.000 min
 Response: 138614745
 Conc: 48.21 ng/ml



#10 gamma-Chlordane
 R.T.: 5.402 min
 Delta R.T.: 0.000 min
 Response: 97155166
 Conc: 49.44 ng/ml



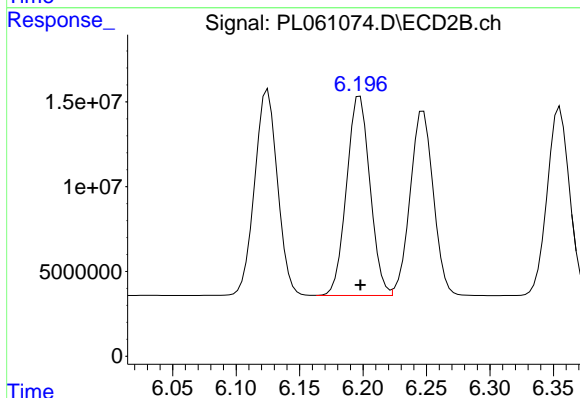
#10 gamma-Chlordane
 R.T.: 6.125 min
 Delta R.T.: 0.000 min
 Response: 151906707
 Conc: 48.91 ng/ml



#11 alpha-Chlordane

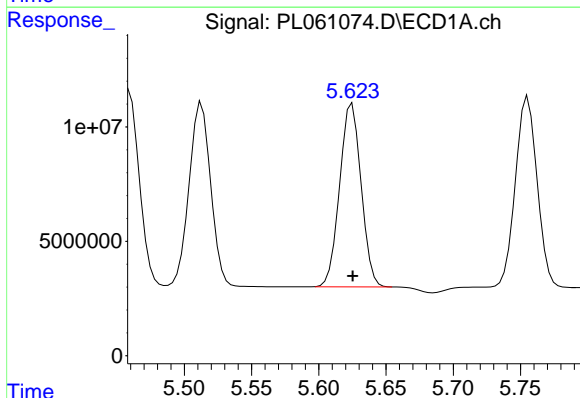
R.T.: 5.460 min
 Delta R.T.: 0.000 min
 Response: 96640001
 Conc: 49.52 ng/ml

Instrument :
 ECD_L
 ClientSampled :



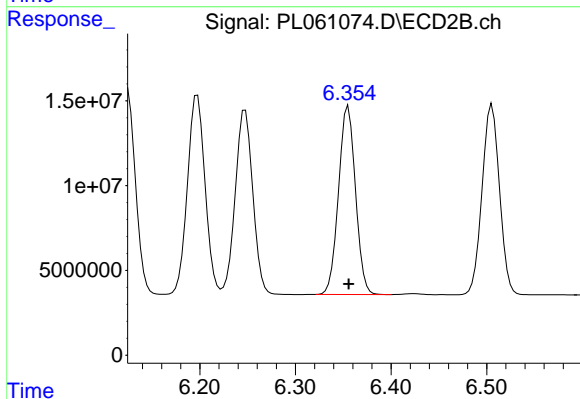
#11 alpha-Chlordane

R.T.: 6.198 min
 Delta R.T.: 0.000 min
 Response: 150946814
 Conc: 48.55 ng/ml



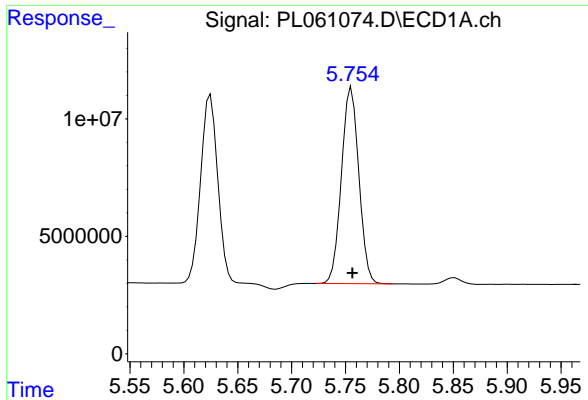
#12 4,4'-DDE

R.T.: 5.625 min
 Delta R.T.: 0.000 min
 Response: 88700903
 Conc: 48.21 ng/ml



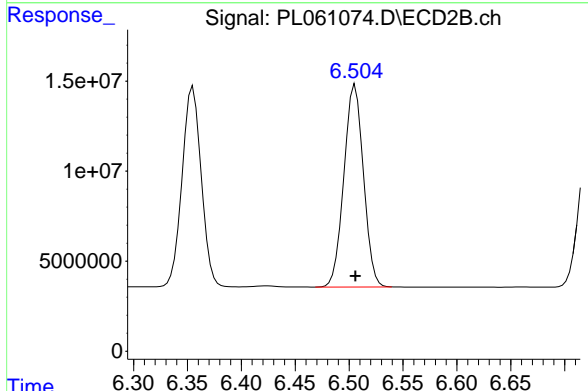
#12 4,4'-DDE

R.T.: 6.355 min
 Delta R.T.: 0.000 min
 Response: 137208828
 Conc: 47.47 ng/ml

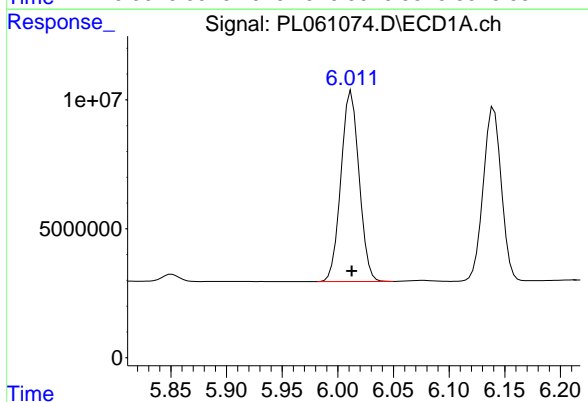


#13 Dieldrin
 R.T.: 5.756 min
 Delta R.T.: 0.000 min
 Response: 93951945
 Conc: 48.82 ng/ml

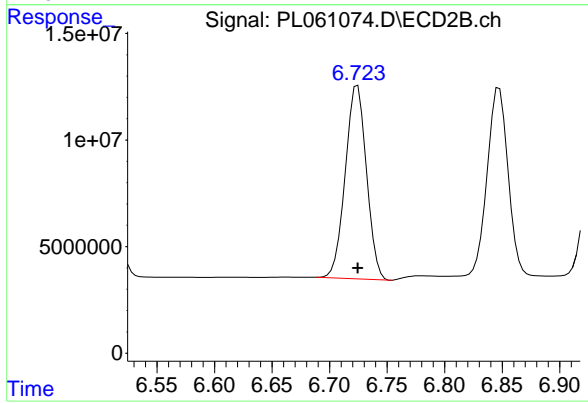
Instrument :
 ECD_L
 ClientSampled :



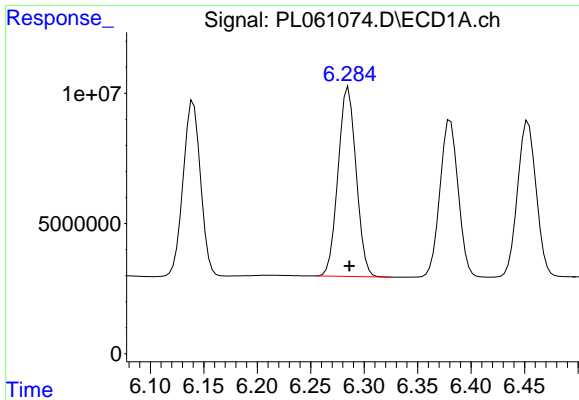
#13 Dieldrin
 R.T.: 6.506 min
 Delta R.T.: 0.000 min
 Response: 142081012
 Conc: 47.58 ng/ml



#14 Endrin
 R.T.: 6.012 min
 Delta R.T.: 0.000 min
 Response: 83902993
 Conc: 46.14 ng/ml

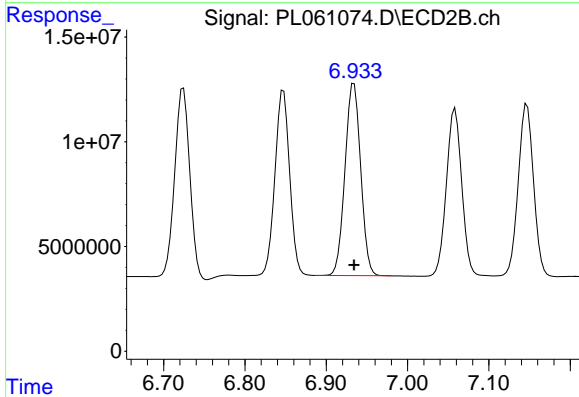


#14 Endrin
 R.T.: 6.724 min
 Delta R.T.: 0.000 min
 Response: 116926656
 Conc: 46.04 ng/ml

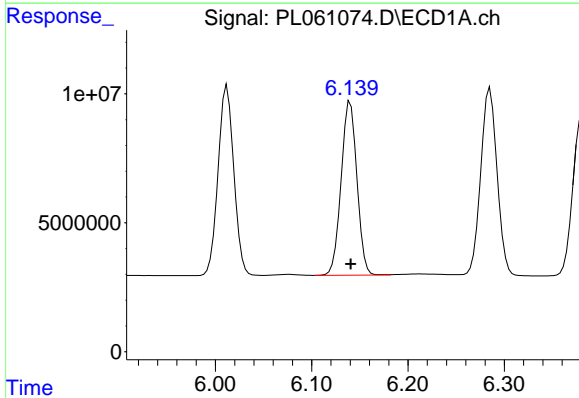


#15 Endosulfan II
R.T.: 6.285 min
Delta R.T.: 0.000 min
Response: 85517131
Conc: 47.91 ng/ml

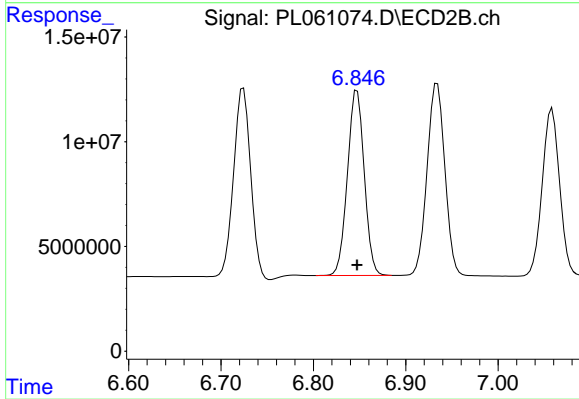
Instrument :
ECD_L
ClientSampled :



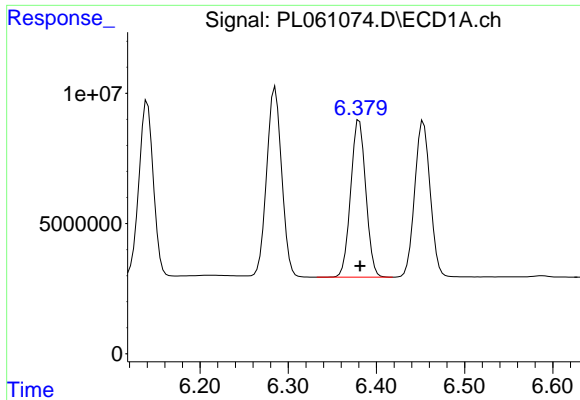
#15 Endosulfan II
R.T.: 6.934 min
Delta R.T.: 0.000 min
Response: 122702383
Conc: 47.70 ng/ml



#16 4,4'-DDD
R.T.: 6.140 min
Delta R.T.: 0.000 min
Response: 76510461
Conc: 48.40 ng/ml

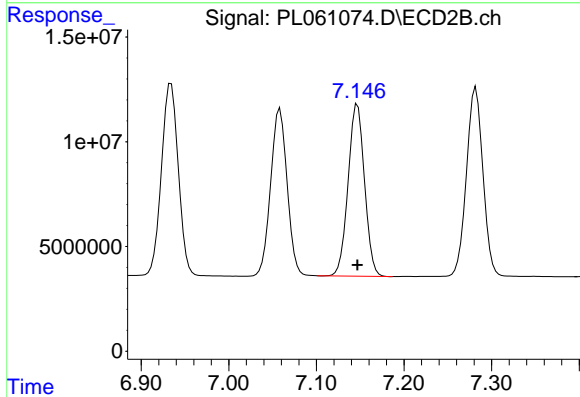


#16 4,4'-DDD
R.T.: 6.847 min
Delta R.T.: 0.000 min
Response: 111722516
Conc: 47.84 ng/ml

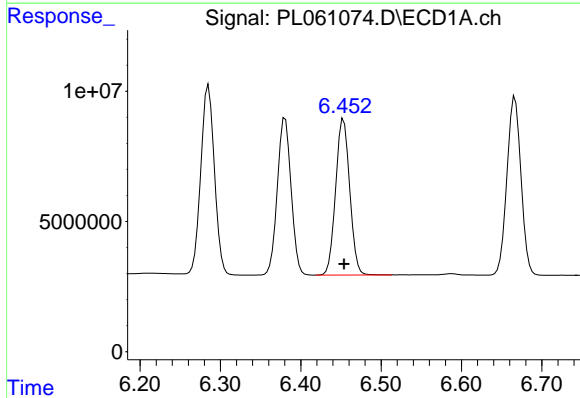


#17 4,4'-DDT
 R.T.: 6.381 min
 Delta R.T.: 0.000 min
 Response: 71782741
 Conc: 47.49 ng/ml

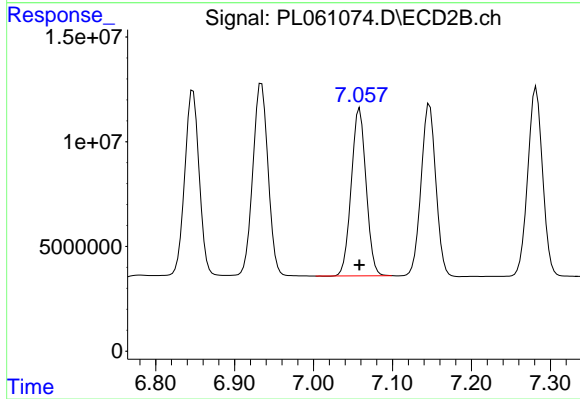
Instrument :
 ECD_L
 ClientSampled :



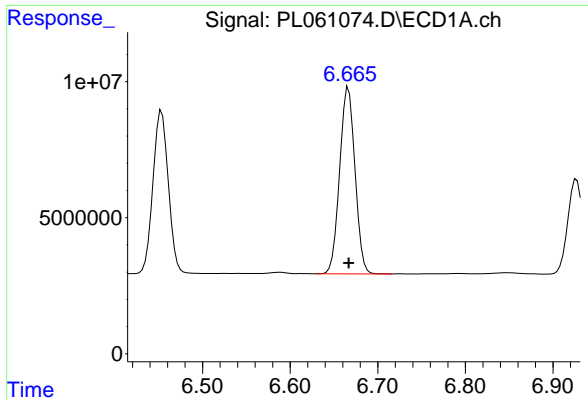
#17 4,4'-DDT
 R.T.: 7.147 min
 Delta R.T.: 0.000 min
 Response: 107062222
 Conc: 46.49 ng/ml



#18 Endrin aldehyde
 R.T.: 6.453 min
 Delta R.T.: 0.000 min
 Response: 72980700
 Conc: 48.20 ng/ml



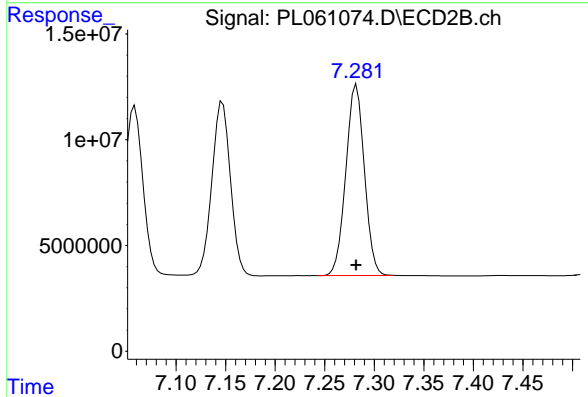
#18 Endrin aldehyde
 R.T.: 7.058 min
 Delta R.T.: 0.000 min
 Response: 104482612
 Conc: 47.89 ng/ml



#19 Endosulfan Sulfate

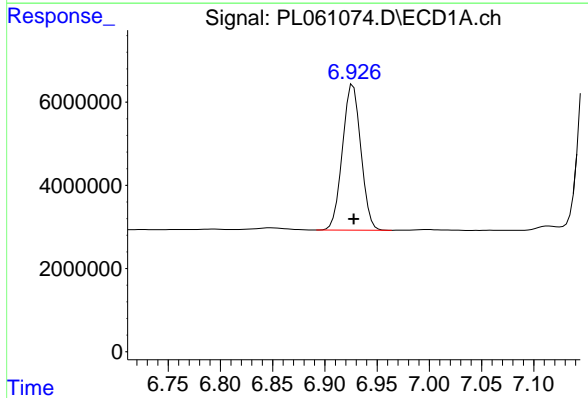
R.T.: 6.667 min
Delta R.T.: 0.000 min
Response: 83346635
Conc: 48.67 ng/ml

Instrument :
ECD_L
ClientSampled :



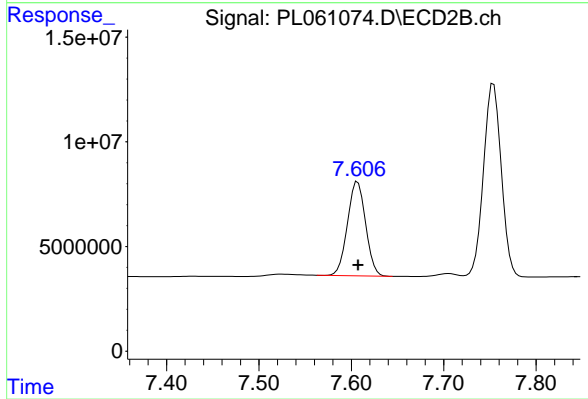
#19 Endosulfan Sulfate

R.T.: 7.282 min
Delta R.T.: 0.000 min
Response: 117557682
Conc: 48.50 ng/ml



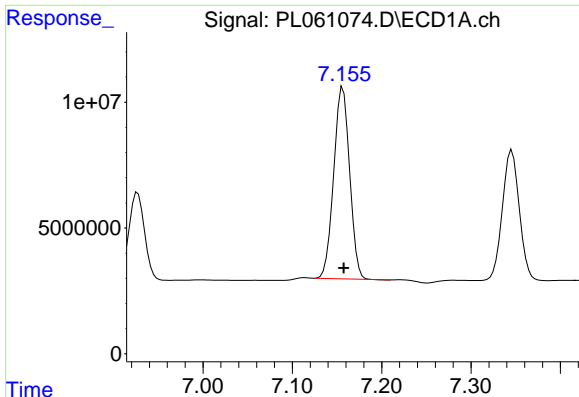
#20 Methoxychlor

R.T.: 6.927 min
Delta R.T.: 0.000 min
Response: 42952224
Conc: 47.85 ng/ml



#20 Methoxychlor

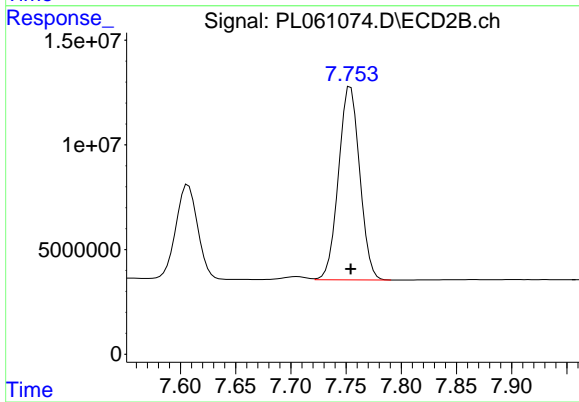
R.T.: 7.607 min
Delta R.T.: 0.000 min
Response: 61491148
Conc: 47.56 ng/ml



#21 Endrin ketone

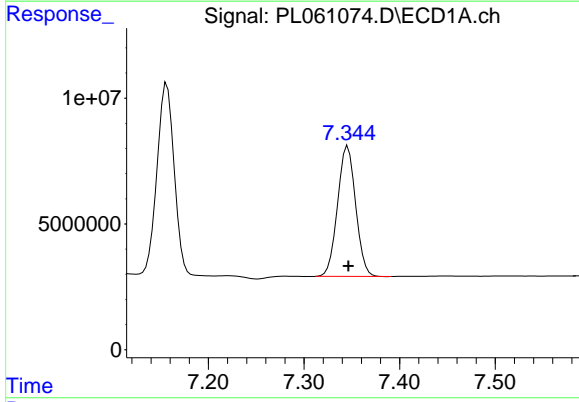
R.T.: 7.157 min
 Delta R.T.: 0.000 min
 Response: 94221796
 Conc: 48.81 ng/ml

Instrument :
 ECD_L
 ClientSampled :



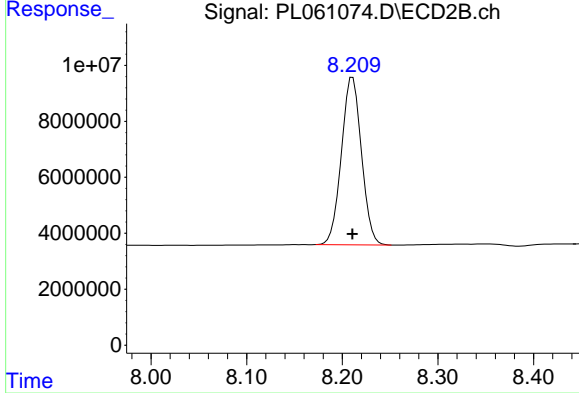
#21 Endrin ketone

R.T.: 7.754 min
 Delta R.T.: 0.000 min
 Response: 123499168
 Conc: 49.62 ng/ml



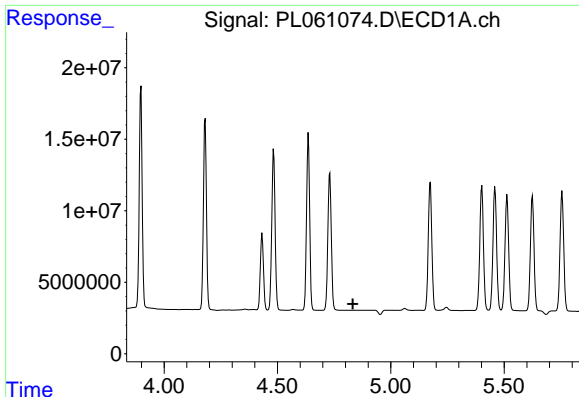
#22 Mirex

R.T.: 7.346 min
 Delta R.T.: 0.000 min
 Response: 68308099
 Conc: 47.96 ng/ml



#22 Mirex

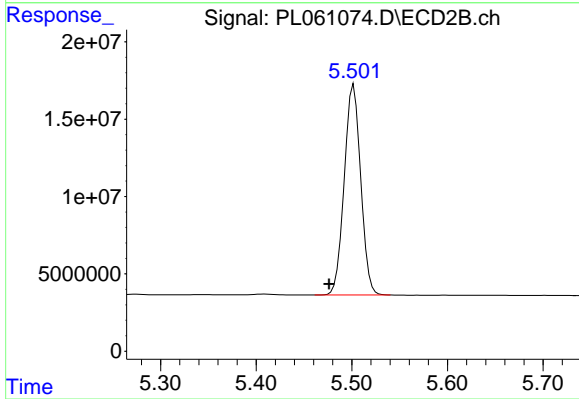
R.T.: 8.211 min
 Delta R.T.: 0.000 min
 Response: 87477483
 Conc: 50.27 ng/ml



#24 Chlordane-2

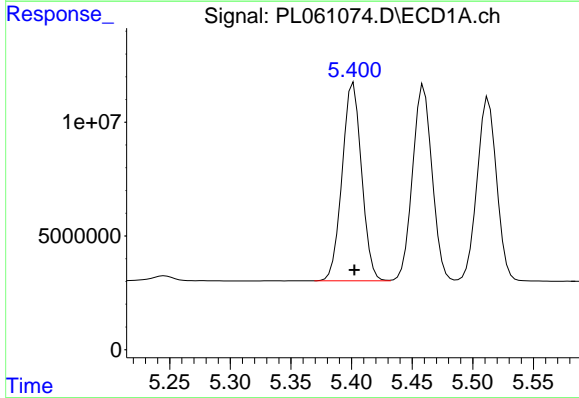
R.T.: 0.000 min
 Exp R.T.: 4.833 min
 Response: 0
 Conc: N.D.

Instrument :
 ECD_L
 ClientSampled :



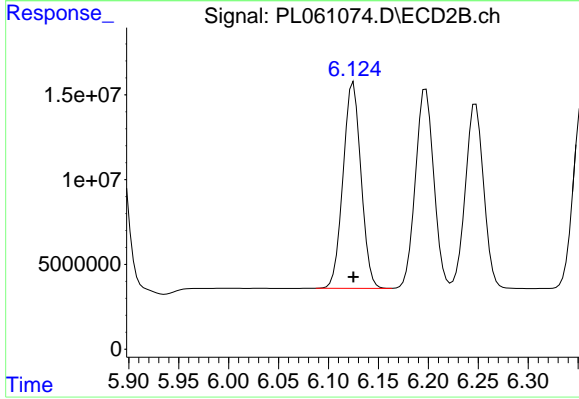
#24 Chlordane-2

R.T.: 5.502 min
 Delta R.T.: 0.026 min
 Response: 163258508
 Conc: 1586.40 ng/ml



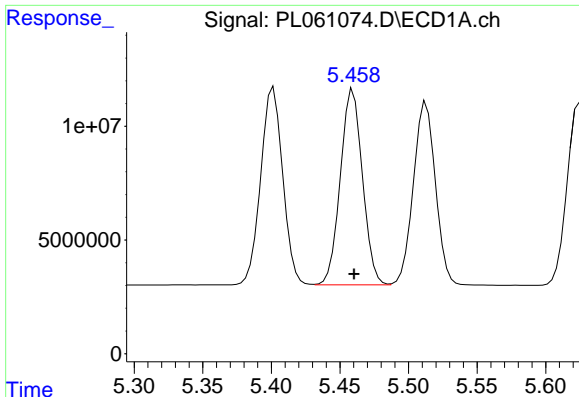
#25 Chlordane-3

R.T.: 5.402 min
 Delta R.T.: 0.000 min
 Response: 97155166
 Conc: 538.31 ng/ml



#25 Chlordane-3

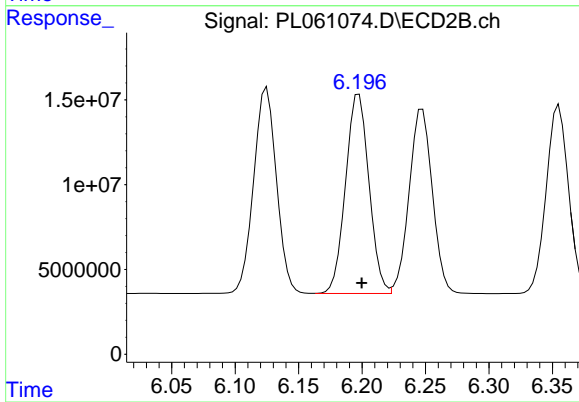
R.T.: 6.125 min
 Delta R.T.: 0.000 min
 Response: 151906707
 Conc: 380.07 ng/ml



#26 Chlordane-4

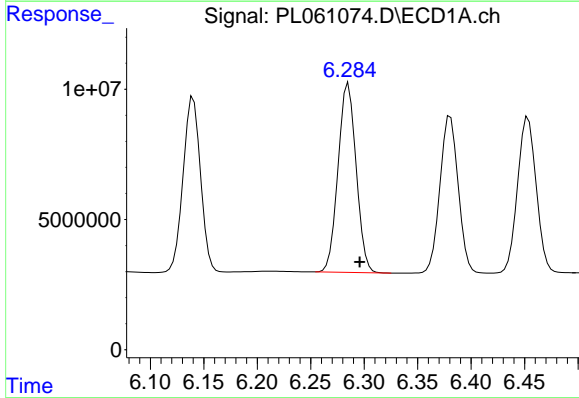
R.T.: 5.460 min
 Delta R.T.: 0.000 min
 Response: 96640001
 Conc: 649.96 ng/ml

Instrument :
 ECD_L
 ClientSampleId :



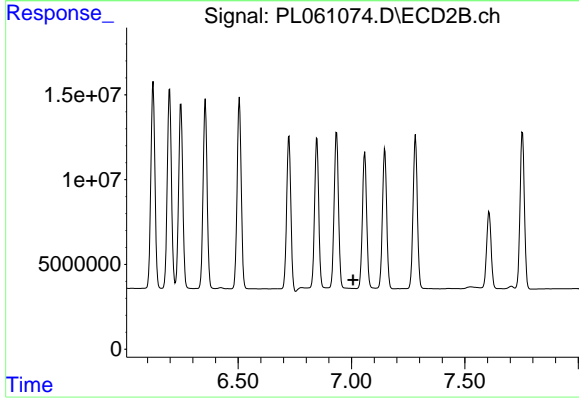
#26 Chlordane-4

R.T.: 6.198 min
 Delta R.T.: -0.002 min
 Response: 150946814
 Conc: 314.00 ng/ml



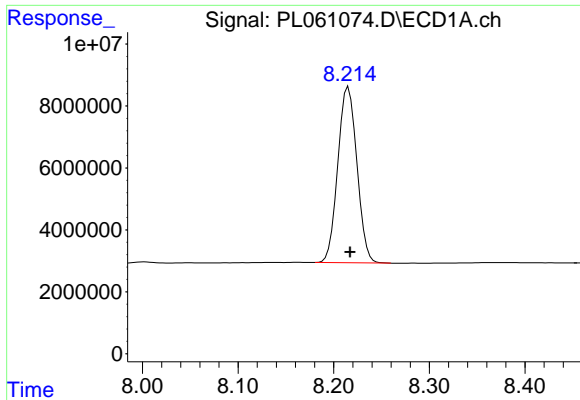
#27 Chlordane-5

R.T.: 6.285 min
 Delta R.T.: -0.011 min
 Response: 85517131
 Conc: 1366.62 ng/ml



#27 Chlordane-5

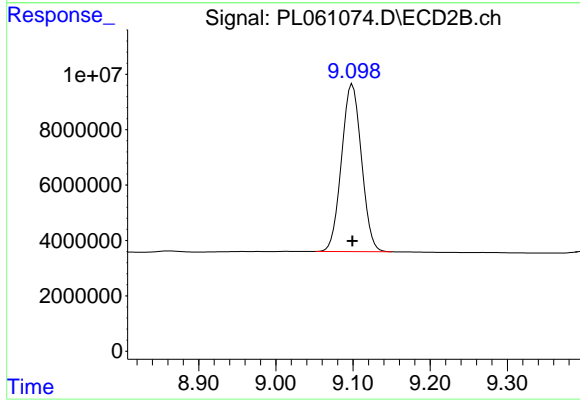
R.T.: 0.000 min
 Exp R.T.: 7.007 min
 Response: 0
 Conc: N.D.



#28 Decachlorobiphenyl

R.T.: 8.215 min
Delta R.T.: -0.002 min
Response: 78833525
Conc: 46.80 ng/ml

Instrument :
ECD_L
ClientSampled :



#28 Decachlorobiphenyl

R.T.: 9.099 min
Delta R.T.: 0.000 min
Response: 108445279
Conc: 51.40 ng/ml