

Data Path : Z:\pestpcbsrv\HPCHEM1\ECD_L\Data\PL082823\
 Data File : PL085006.D
 Signal(s) : Signal #1: ECD1A.ch Signal #2: ECD2B.ch
 Acq On : 28 Aug 2023 09:46
 Operator : AR\AJ
 Sample : PB155121BL
 Misc :
 ALS Vial : 5 Sample Multiplier: 1

Instrument :
 ECD_L
ClientSampleId :
 PB155121BL

Integration File signal 1: autoint1.e
 Integration File signal 2: autoint2.e
 Quant Time: Aug 28 22:03:51 2023
 Quant Method : Z:\pestpcbsrv\HPCHEM1\ECD_L\methods\PL080323.M
 Quant Title : GC Extractables
 QLast Update : Thu Aug 03 16:21:43 2023
 Response via : Initial Calibration
 Integrator: ChemStation

Volume Inj. : 1 µl
 Signal #1 Phase : ZB-MR2 Signal #2 Phase: ZB-MR1
 Signal #1 Info : 30M x 0.32mm x0.2 Signal #2 Info : 30M x 0.32mm x0.5µm

Compound	RT#1	RT#2	Resp#1	Resp#2	ng/ml	ng/ml

System Monitoring Compounds						
1) SA Tetrachlo...	3.486	2.686	41975557	20043992	18.066	18.433
28) SA Decachlor...	9.036	7.868	31305890	23843159	19.240	19.123

Target Compounds

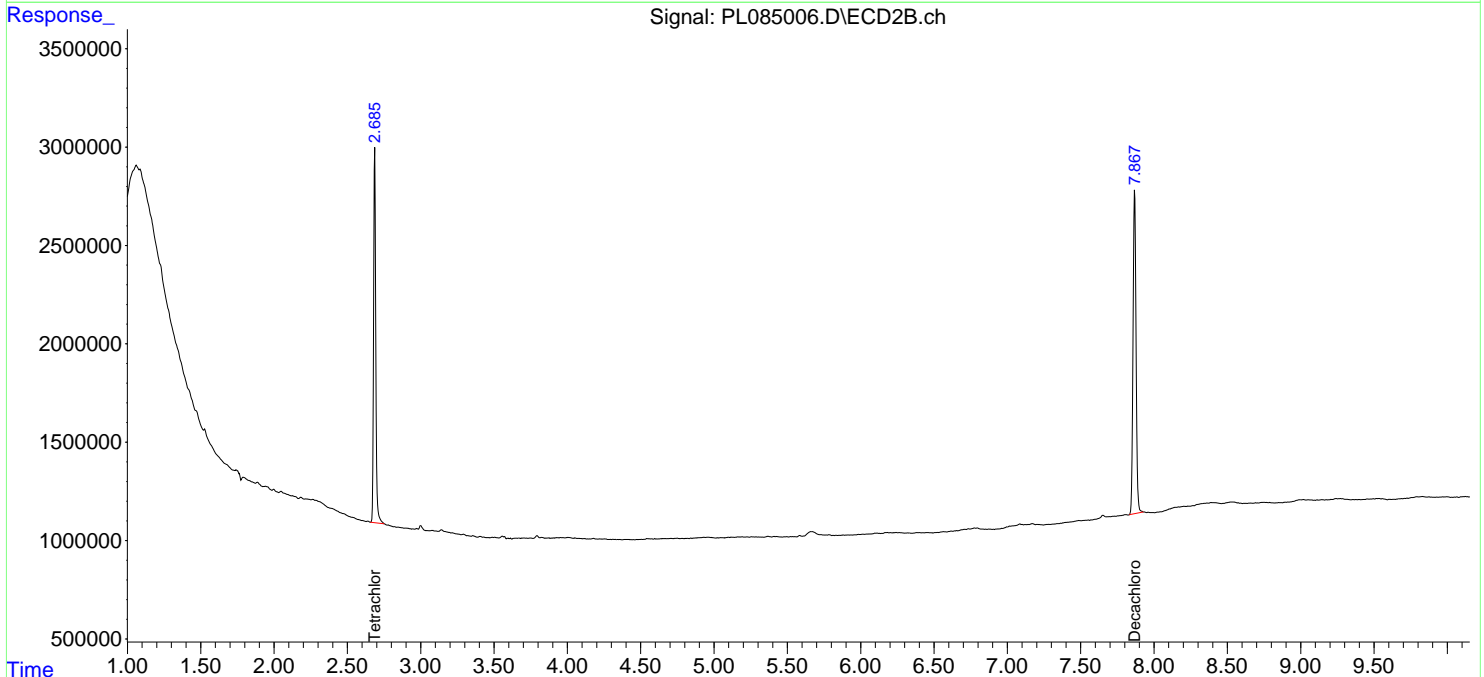
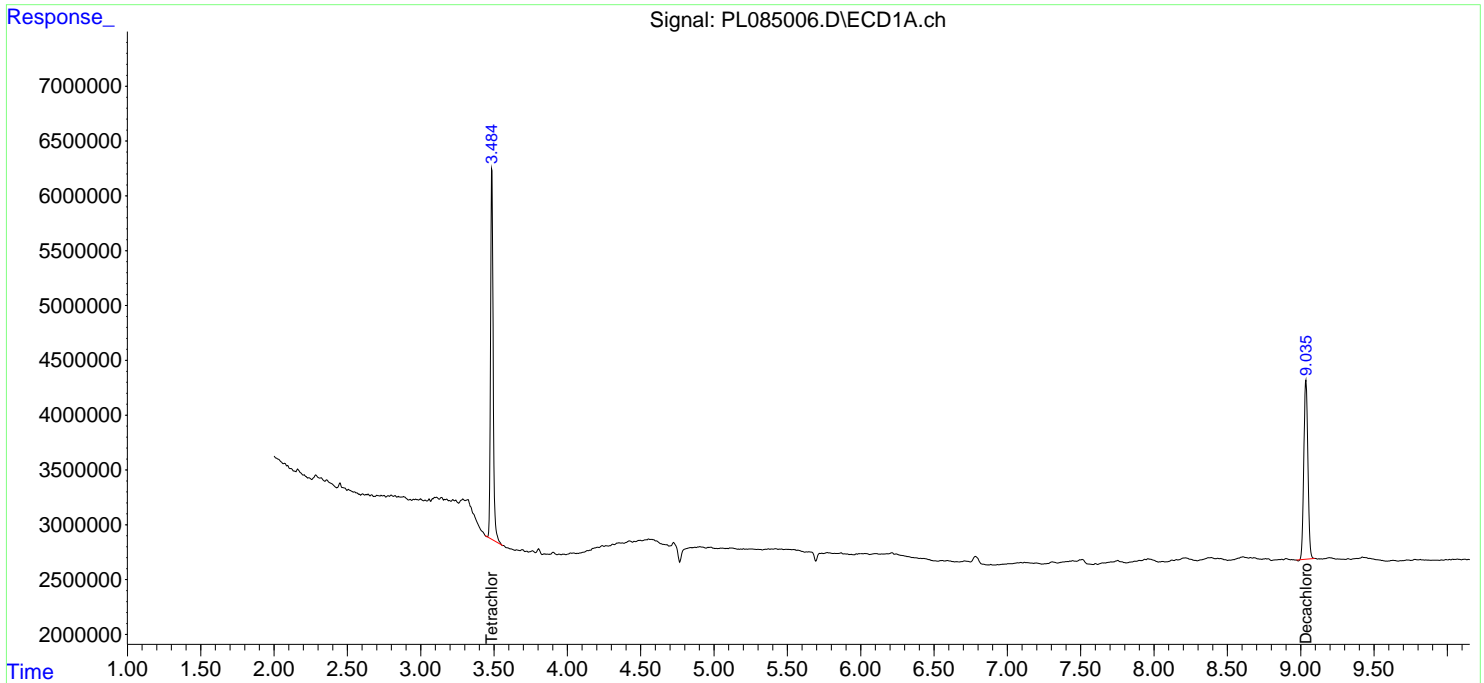
 (f)=RT Delta > 1/2 Window (#)=Amounts differ by > 25% (m)=manual int.

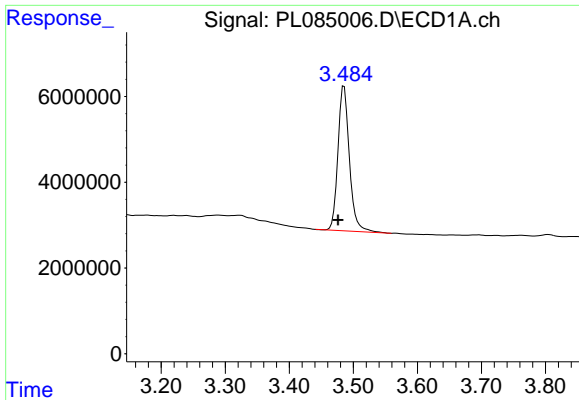
Data Path : Z:\pestpcbsrv\HPCHEM1\ECD_L\Data\PL082823\
 Data File : PL085006.D
 Signal(s) : Signal #1: ECD1A.ch Signal #2: ECD2B.ch
 Acq On : 28 Aug 2023 09:46
 Operator : AR\AJ
 Sample : PB155121BL
 Misc :
 ALS Vial : 5 Sample Multiplier: 1

Instrument :
 ECD_L
 ClientSampleId :
 PB155121BL

Integration File signal 1: autoint1.e
 Integration File signal 2: autoint2.e
 Quant Time: Aug 28 22:03:51 2023
 Quant Method : Z:\pestpcbsrv\HPCHEM1\ECD_L\methods\PL080323.M
 Quant Title : GC Extractables
 QLast Update : Thu Aug 03 16:21:43 2023
 Response via : Initial Calibration
 Integrator: ChemStation

Volume Inj. : 1 µl
 Signal #1 Phase : ZB-MR2 Signal #2 Phase: ZB-MR1
 Signal #1 Info : 30M x 0.32mm x0.2 Signal #2 Info : 30M x 0.32mm x0.5µm

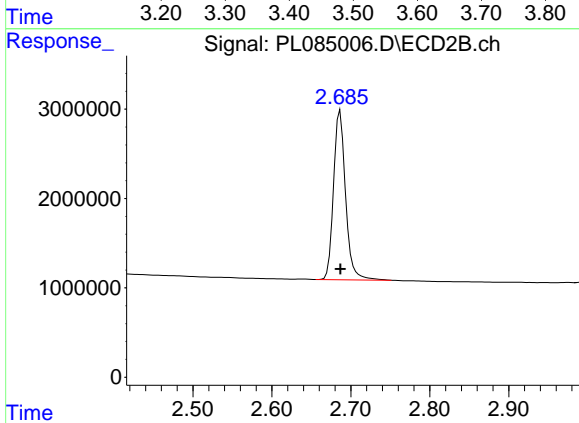




#1 Tetrachloro-m-xylene

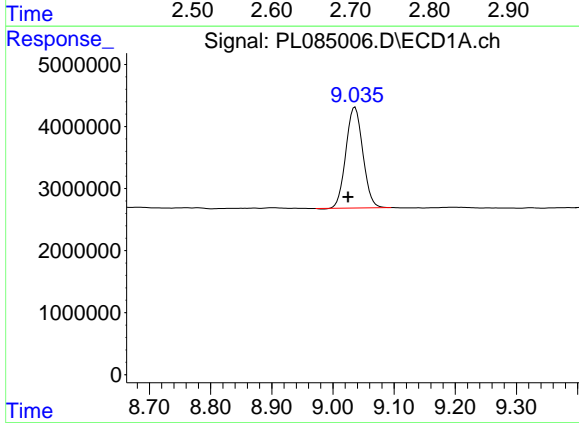
R.T.: 3.486 min
 Delta R.T.: 0.010 min
 Response: 41975557
 Conc: 18.07 ng/ml

Instrument :
 ECD_L
 ClientSampleId :
 PB155121BL



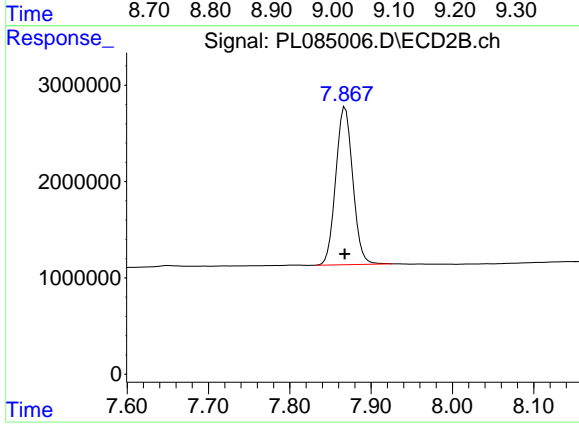
#1 Tetrachloro-m-xylene

R.T.: 2.686 min
 Delta R.T.: 0.000 min
 Response: 20043992
 Conc: 18.43 ng/ml



#28 Decachlorobiphenyl

R.T.: 9.036 min
 Delta R.T.: 0.011 min
 Response: 31305890
 Conc: 19.24 ng/ml



#28 Decachlorobiphenyl

R.T.: 7.868 min
 Delta R.T.: 0.000 min
 Response: 23843159
 Conc: 19.12 ng/ml