

Data Path : Z:\pestpcbsrv\HPCHEM1\ECD_L\Data\PL082823\
 Data File : PL085007.D
 Signal(s) : Signal #1: ECD1A.ch Signal #2: ECD2B.ch
 Acq On : 28 Aug 2023 10:00
 Operator : AR\AJ
 Sample : PB155121BS
 Misc :
 ALS Vial : 6 Sample Multiplier: 1

Instrument :
 ECD_L
 ClientSampleId :
 PB155121BS

Integration File signal 1: autoint1.e
 Integration File signal 2: autoint2.e
 Quant Time: Aug 28 22:04:15 2023
 Quant Method : Z:\pestpcbsrv\HPCHEM1\ECD_L\methods\PL080323.M
 Quant Title : GC Extractables
 QLast Update : Thu Aug 03 16:21:43 2023
 Response via : Initial Calibration
 Integrator: ChemStation

Volume Inj. : 1 µl
 Signal #1 Phase : ZB-MR2 Signal #2 Phase: ZB-MR1
 Signal #1 Info : 30M x 0.32mm x0.2 Signal #2 Info : 30M x 0.32mm x0.5µm

Compound	RT#1	RT#2	Resp#1	Resp#2	ng/ml	ng/ml

System Monitoring Compounds						
1) SA Tetrachlo...	3.477	2.685	39598123	18625671	17.043	17.129
28) SA Decachlor...	9.027	7.865	30758273	23088159	18.904	18.518
Target Compounds						
2) A alpha-BHC	3.936	3.189	179.8E6	87113198	54.448	56.418
3) MA gamma-BHC...	4.269	3.520	168.9E6	81683671	52.955	53.756
4) MA Heptachlor	4.862	3.861	190.8E6	80757358	56.747	56.706
5) MB Aldrin	5.204	4.141	173.6E6	80180612	52.534	55.168
6) B beta-BHC	4.469	3.822	74087393	34930342	53.036	52.133
7) B delta-BHC	4.716	4.050	171.7E6	81613962	53.251	53.757
8) B Heptachlo...	5.634	4.647	158.1E6	73698193	52.489	55.546
9) A Endosulfan I	6.020	5.017	137.5E6	70299782	52.219	56.725
10) B gamma-Chl...	5.892	4.900	150.4E6	76630813	52.523	56.502
11) B alpha-Chl...	5.972	4.964	146.2E6	76169269	51.791	55.904
12) B 4,4'-DDE	6.151	5.162	126.3E6	70157140	55.028	56.971
13) MA Dieldrin	6.297	5.284	133.8E6	74359311	50.627	54.765
14) MA Endrin	6.527	5.559	109.4E6	65874633	50.154	53.854
15) B Endosulfa...	6.747	5.857	103.8E6	63403089	49.070	52.547
16) A 4,4'-DDD	6.670	5.720	94814407	59201029	56.552	57.297
17) MA 4,4'-DDT	6.985	5.972	101.4E6	62591259	54.101	53.932
18) B Endrin al...	6.879	6.039	84812825	52395728	50.276	52.832
19) B Endosulfa...	7.115	6.264	103.5E6	66476530	51.793	55.901
20) A Methoxychlor	7.467	6.556	48529876	32135061	50.568	46.837
21) B Endrin ke...	7.598	6.768	104.1E6	79221058	52.055	54.907
22) Mirex	8.074	6.949	82946921	60234640	49.943	52.229

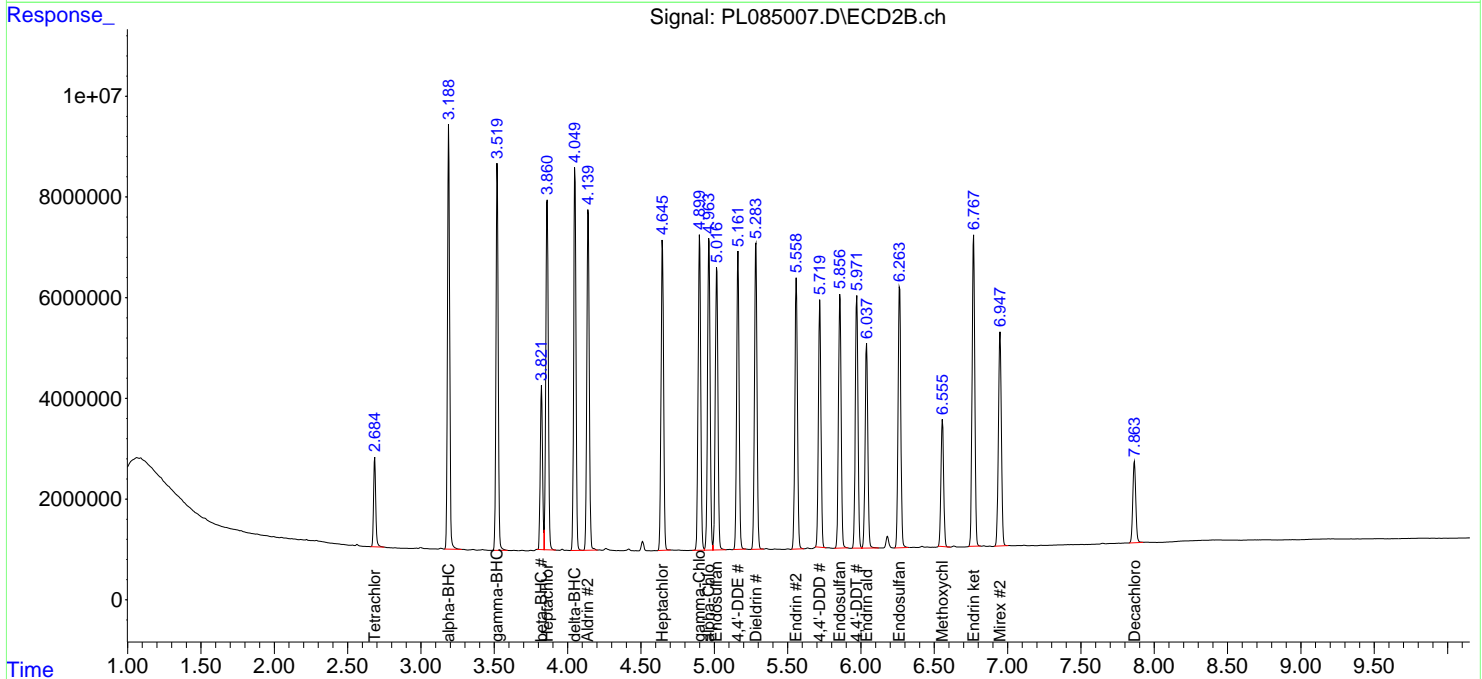
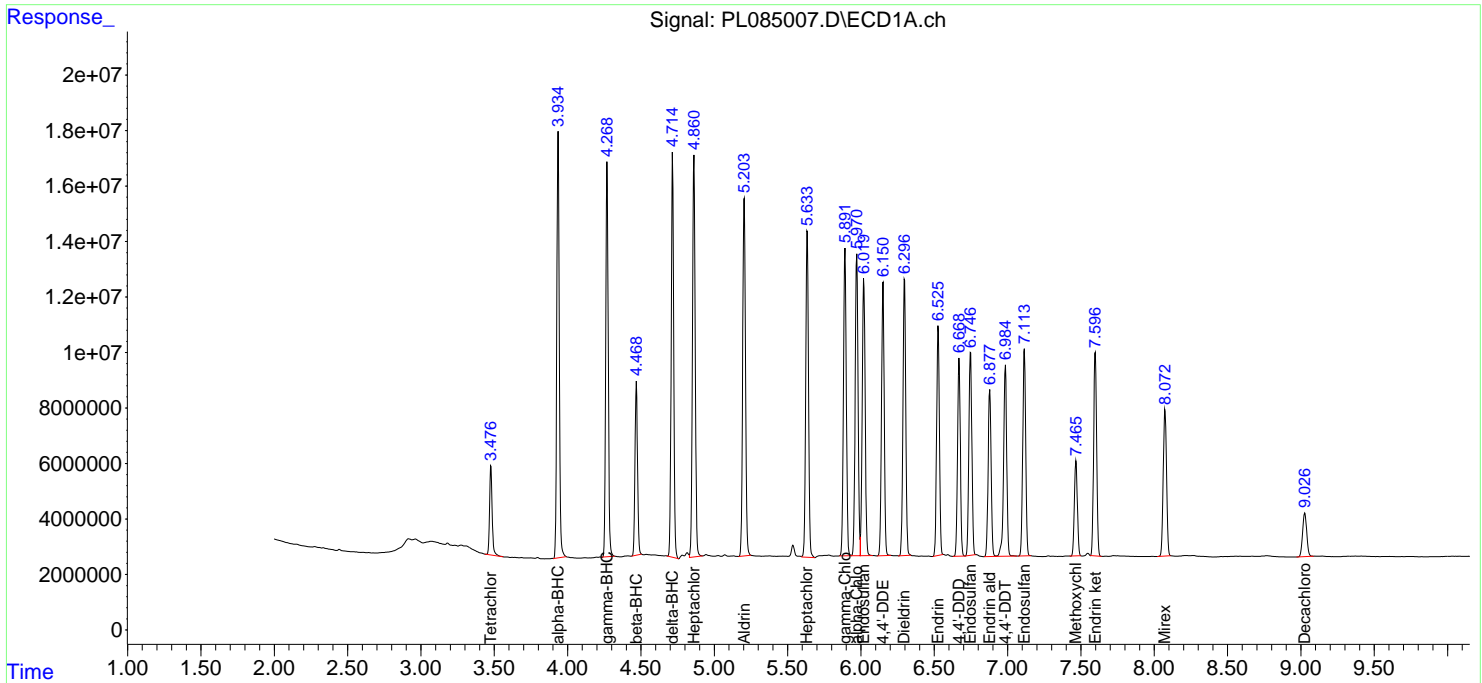
(f)=RT Delta > 1/2 Window (#)=Amounts differ by > 25% (m)=manual int.

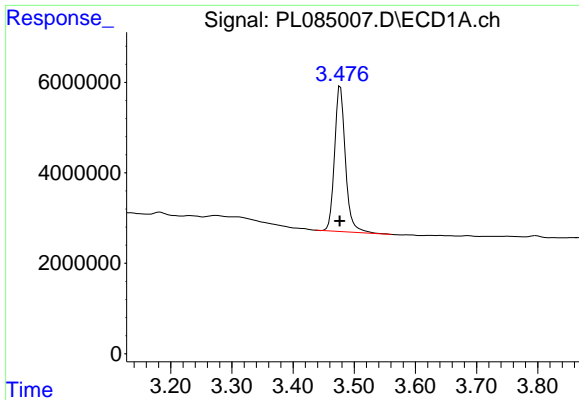
Data Path : Z:\pestpcbsrv\HPCHEM1\ECD_L\Data\PL082823\
 Data File : PL085007.D
 Signal(s) : Signal #1: ECD1A.ch Signal #2: ECD2B.ch
 Acq On : 28 Aug 2023 10:00
 Operator : AR\AJ
 Sample : PB155121BS
 Misc :
 ALS Vial : 6 Sample Multiplier: 1

Instrument :
 ECD_L
 ClientSampleId :
 PB155121BS

Integration File signal 1: autoint1.e
 Integration File signal 2: autoint2.e
 Quant Time: Aug 28 22:04:15 2023
 Quant Method : Z:\pestpcbsrv\HPCHEM1\ECD_L\methods\PL080323.M
 Quant Title : GC Extractables
 QLast Update : Thu Aug 03 16:21:43 2023
 Response via : Initial Calibration
 Integrator: ChemStation

Volume Inj. : 1 µl
 Signal #1 Phase : ZB-MR2 Signal #2 Phase: ZB-MR1
 Signal #1 Info : 30M x 0.32mm x0.2 Signal #2 Info : 30M x 0.32mm x0.5µm

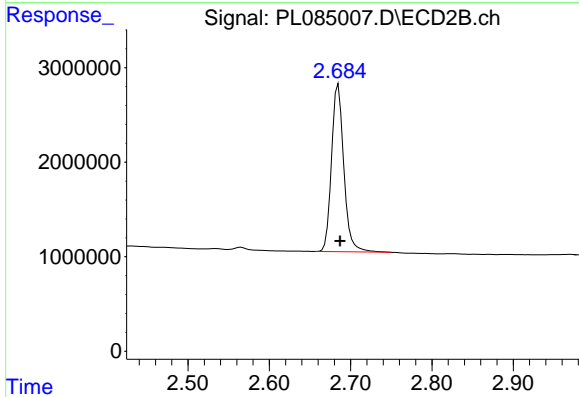




#1 Tetrachloro-m-xylene

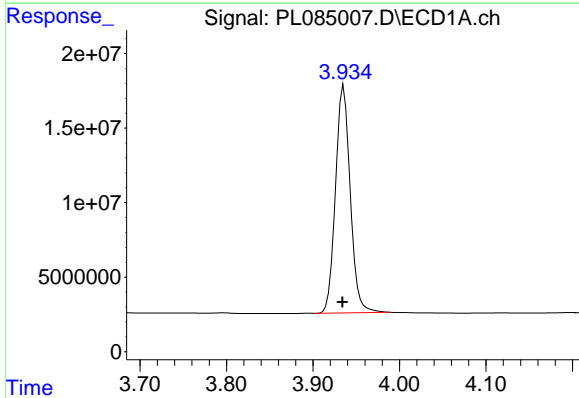
R.T.: 3.477 min
 Delta R.T.: 0.001 min
 Response: 39598123
 Conc: 17.04 ng/ml

Instrument :
 ECD_L
 ClientSampleId :
 PB155121BS



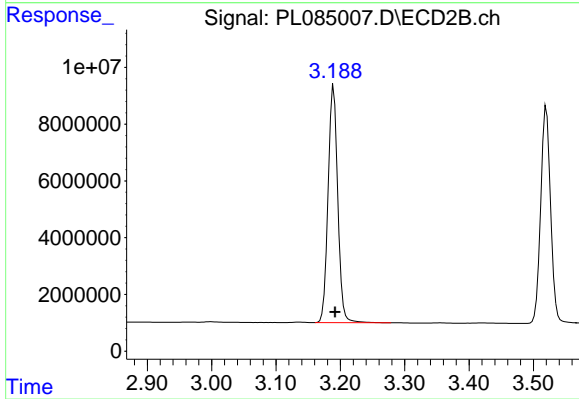
#1 Tetrachloro-m-xylene

R.T.: 2.685 min
 Delta R.T.: -0.002 min
 Response: 18625671
 Conc: 17.13 ng/ml



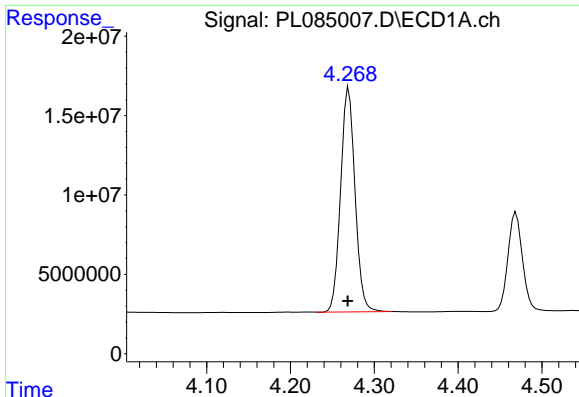
#2 alpha-BHC

R.T.: 3.936 min
 Delta R.T.: 0.002 min
 Response: 179755008
 Conc: 54.45 ng/ml



#2 alpha-BHC

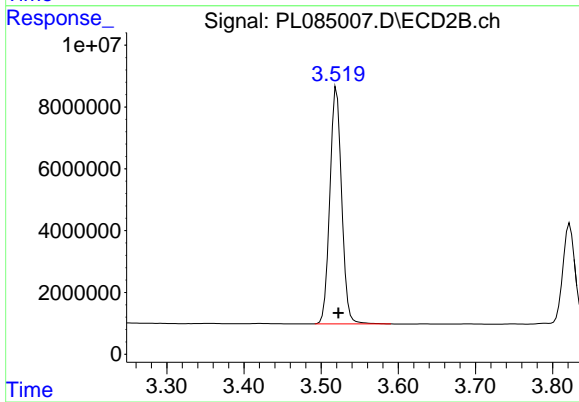
R.T.: 3.189 min
 Delta R.T.: -0.002 min
 Response: 87113198
 Conc: 56.42 ng/ml



#3 gamma-BHC (Lindane)

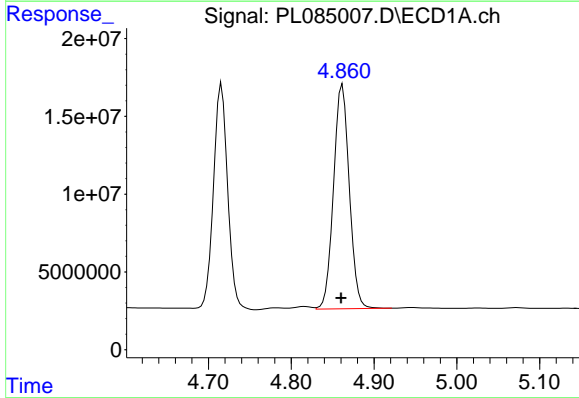
R.T.: 4.269 min
 Delta R.T.: 0.001 min
 Response: 168926933
 Conc: 52.96 ng/ml

Instrument :
 ECD_L
 ClientSampleId :
 PB155121BS



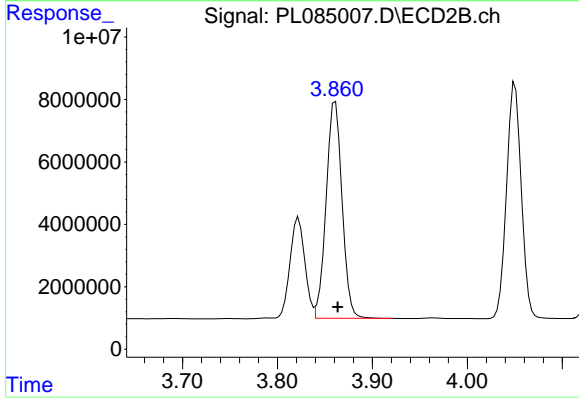
#3 gamma-BHC (Lindane)

R.T.: 3.520 min
 Delta R.T.: -0.002 min
 Response: 81683671
 Conc: 53.76 ng/ml



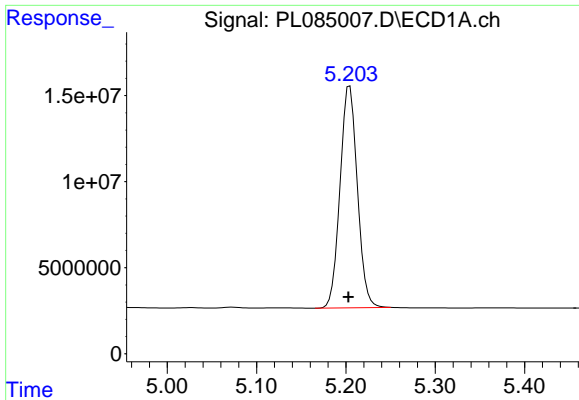
#4 Heptachlor

R.T.: 4.862 min
 Delta R.T.: 0.002 min
 Response: 190832280
 Conc: 56.75 ng/ml



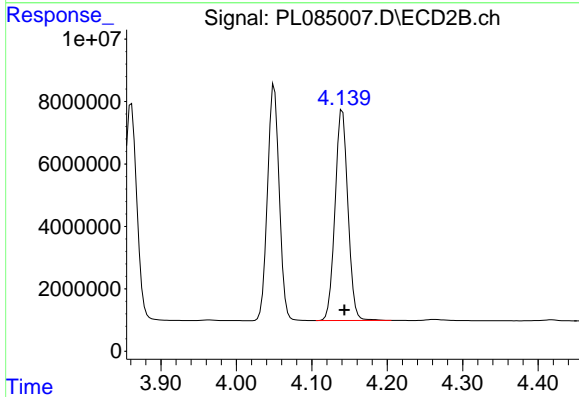
#4 Heptachlor

R.T.: 3.861 min
 Delta R.T.: -0.002 min
 Response: 80757358
 Conc: 56.71 ng/ml

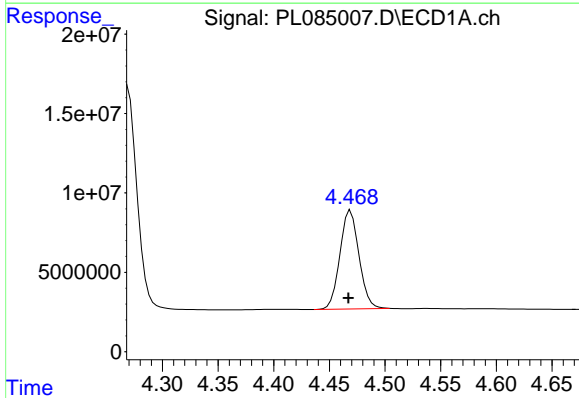


#5 Aldrin
 R.T.: 5.204 min
 Delta R.T.: 0.002 min
 Response: 173642772
 Conc: 52.53 ng/ml

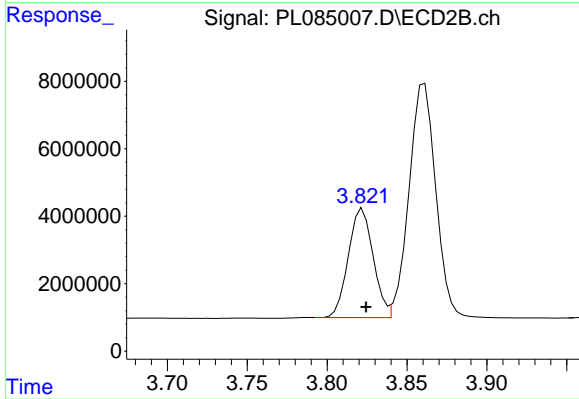
Instrument :
 ECD_L
 ClientSampleId :
 PB155121BS



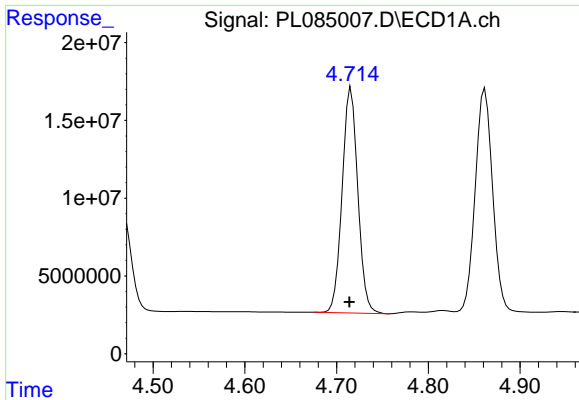
#5 Aldrin
 R.T.: 4.141 min
 Delta R.T.: -0.003 min
 Response: 80180612
 Conc: 55.17 ng/ml



#6 beta-BHC
 R.T.: 4.469 min
 Delta R.T.: 0.002 min
 Response: 74087393
 Conc: 53.04 ng/ml



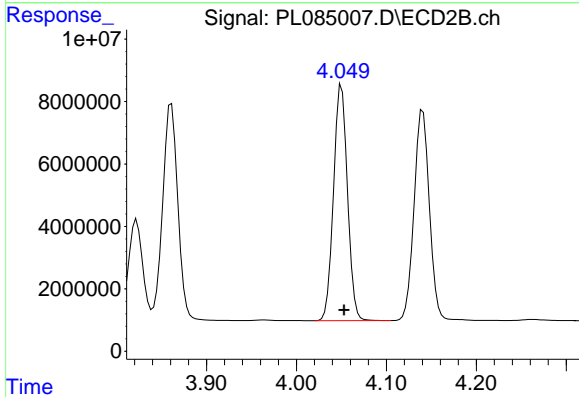
#6 beta-BHC
 R.T.: 3.822 min
 Delta R.T.: -0.002 min
 Response: 34930342
 Conc: 52.13 ng/ml



#7 delta-BHC

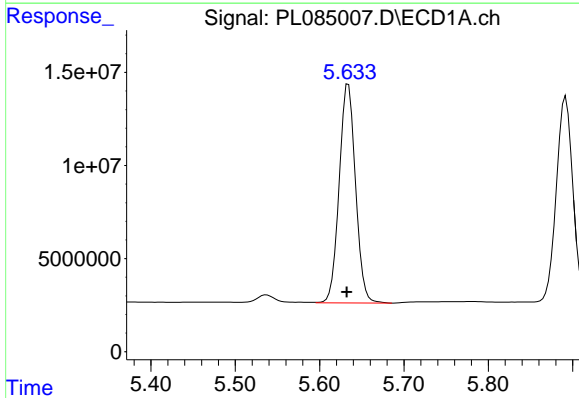
R.T.: 4.716 min
 Delta R.T.: 0.002 min
 Response: 171720670
 Conc: 53.25 ng/ml

Instrument :
 ECD_L
 ClientSampleId :
 PB155121BS



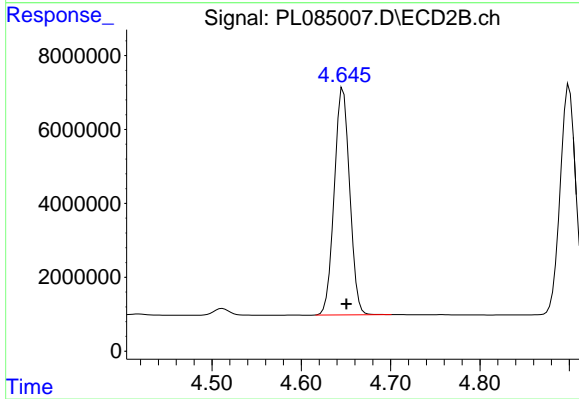
#7 delta-BHC

R.T.: 4.050 min
 Delta R.T.: -0.003 min
 Response: 81613962
 Conc: 53.76 ng/ml



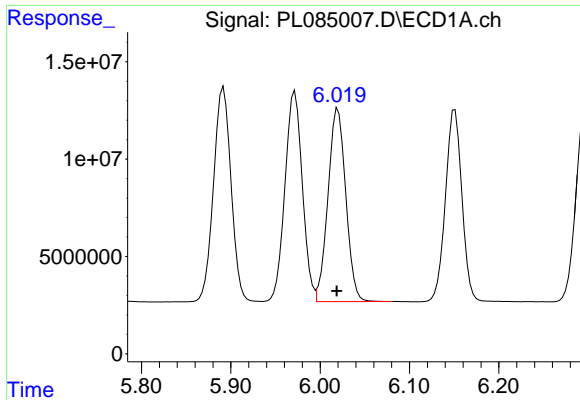
#8 Heptachlor epoxide

R.T.: 5.634 min
 Delta R.T.: 0.002 min
 Response: 158133878
 Conc: 52.49 ng/ml



#8 Heptachlor epoxide

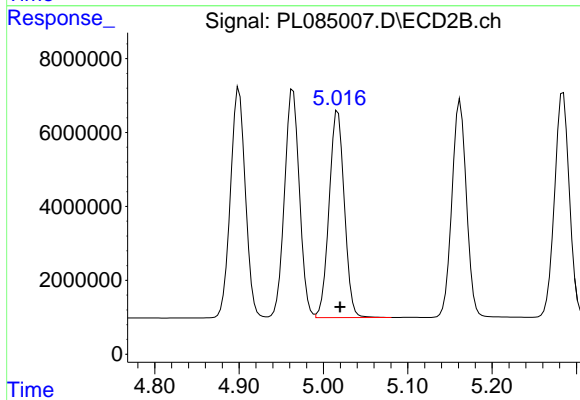
R.T.: 4.647 min
 Delta R.T.: -0.004 min
 Response: 73698193
 Conc: 55.55 ng/ml



#9 Endosulfan I

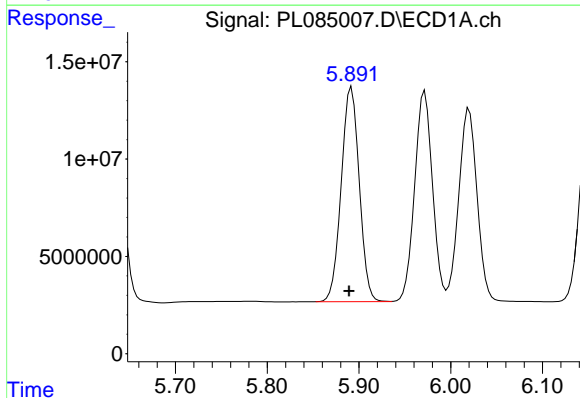
R.T.: 6.020 min
 Delta R.T.: 0.002 min
 Response: 137452573
 Conc: 52.22 ng/ml

Instrument :
 ECD_L
 ClientSampleId :
 PB155121BS



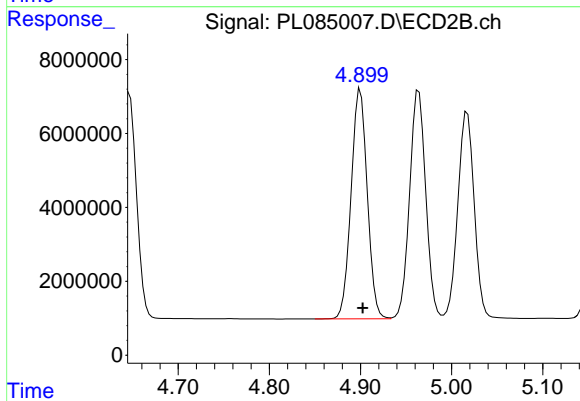
#9 Endosulfan I

R.T.: 5.017 min
 Delta R.T.: -0.003 min
 Response: 70299782
 Conc: 56.73 ng/ml



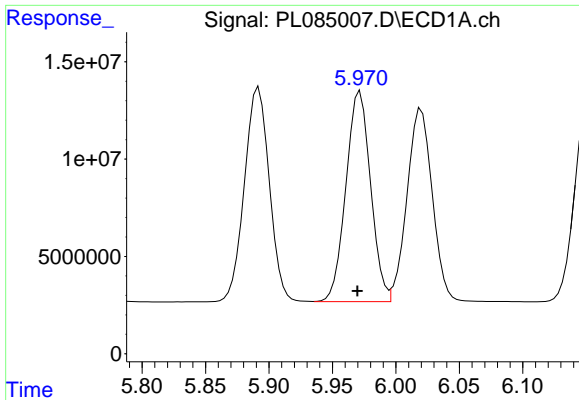
#10 gamma-Chlordane

R.T.: 5.892 min
 Delta R.T.: 0.003 min
 Response: 150405123
 Conc: 52.52 ng/ml



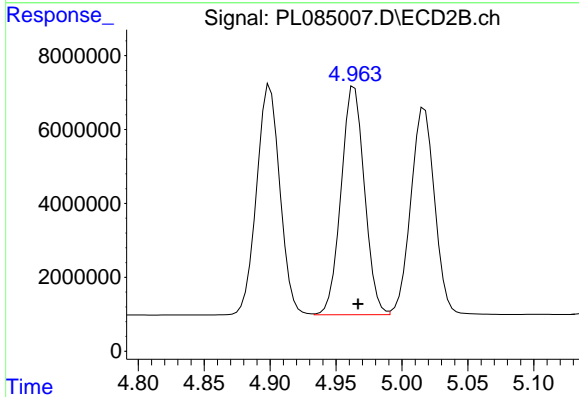
#10 gamma-Chlordane

R.T.: 4.900 min
 Delta R.T.: -0.003 min
 Response: 76630813
 Conc: 56.50 ng/ml

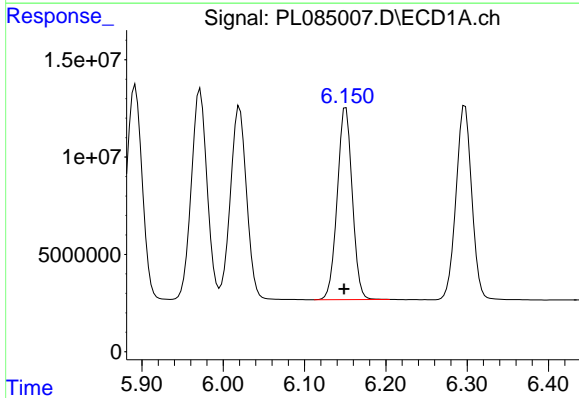


#11 alpha-Chlordane
R.T.: 5.972 min
Delta R.T.: 0.002 min
Response: 146216016
Conc: 51.79 ng/ml

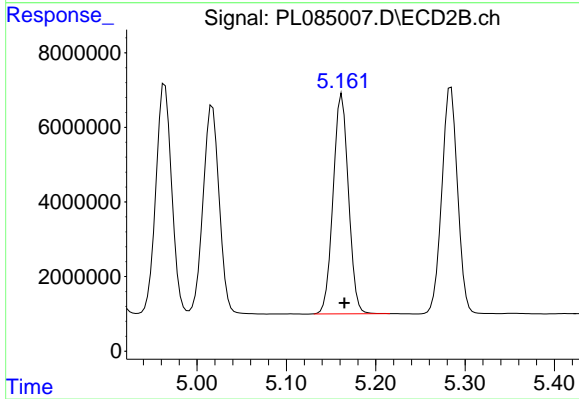
Instrument :
ECD_L
ClientSampleId :
PB155121BS



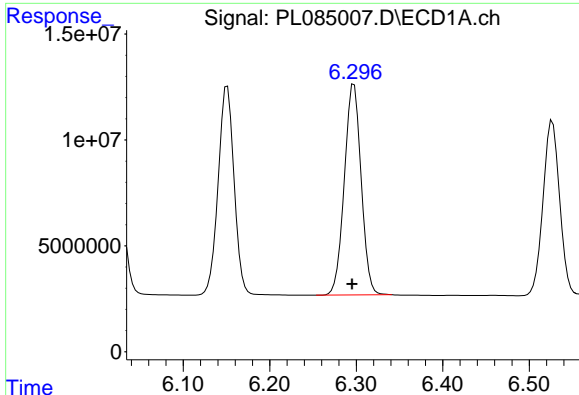
#11 alpha-Chlordane
R.T.: 4.964 min
Delta R.T.: -0.003 min
Response: 76169269
Conc: 55.90 ng/ml



#12 4,4'-DDE
R.T.: 6.151 min
Delta R.T.: 0.003 min
Response: 126305625
Conc: 55.03 ng/ml



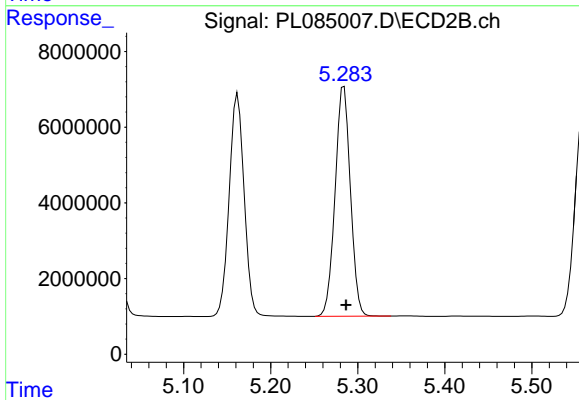
#12 4,4'-DDE
R.T.: 5.162 min
Delta R.T.: -0.003 min
Response: 70157140
Conc: 56.97 ng/ml



#13 Dieldrin

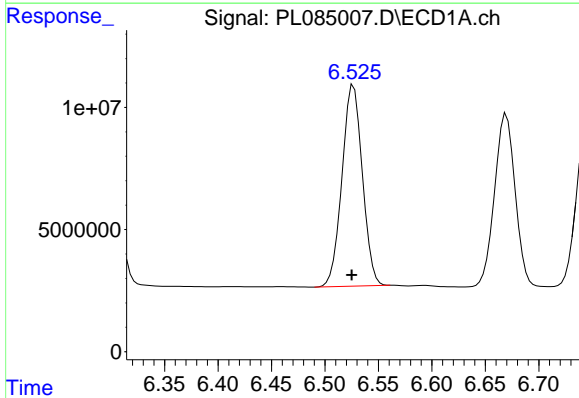
R.T.: 6.297 min
 Delta R.T.: 0.002 min
 Response: 133786987
 Conc: 50.63 ng/ml

Instrument :
 ECD_L
 ClientSampleId :
 PB155121BS



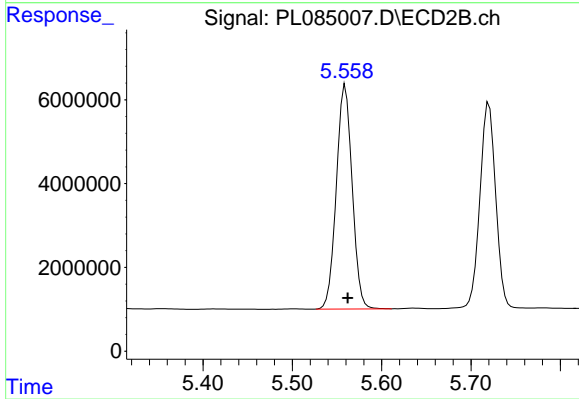
#13 Dieldrin

R.T.: 5.284 min
 Delta R.T.: -0.003 min
 Response: 74359311
 Conc: 54.77 ng/ml



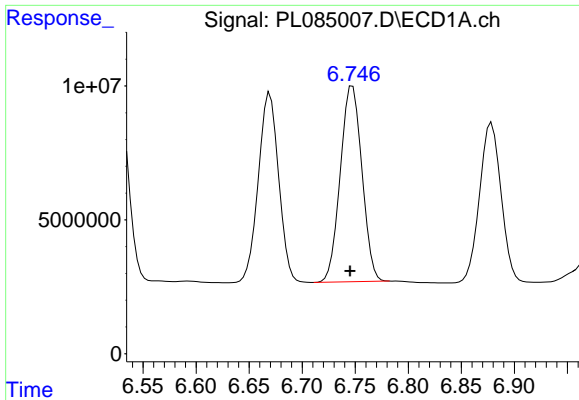
#14 Endrin

R.T.: 6.527 min
 Delta R.T.: 0.002 min
 Response: 109386200
 Conc: 50.15 ng/ml



#14 Endrin

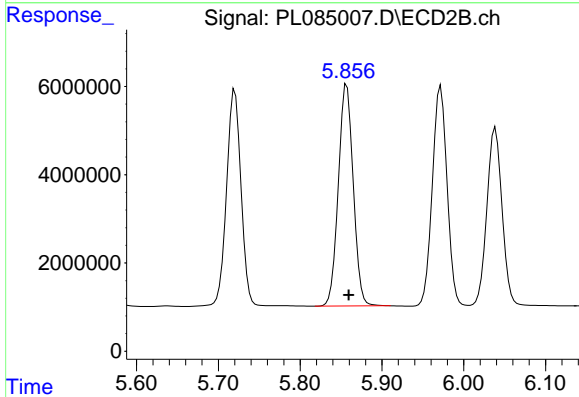
R.T.: 5.559 min
 Delta R.T.: -0.002 min
 Response: 65874633
 Conc: 53.85 ng/ml



#15 Endosulfan II

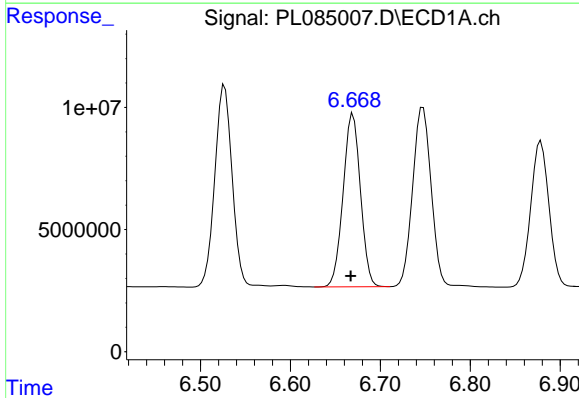
R.T.: 6.747 min
 Delta R.T.: 0.002 min
 Response: 103783902
 Conc: 49.07 ng/ml

Instrument :
 ECD_L
 ClientSampleId :
 PB155121BS



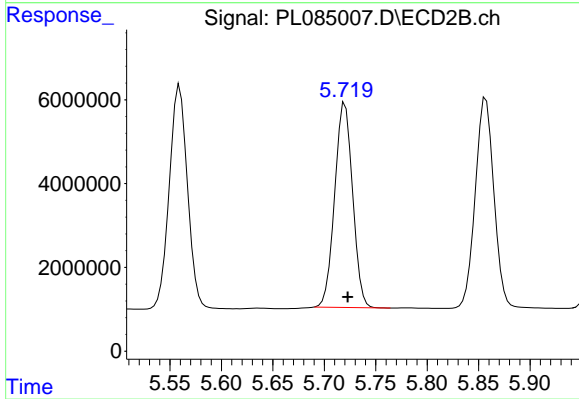
#15 Endosulfan II

R.T.: 5.857 min
 Delta R.T.: -0.003 min
 Response: 63403089
 Conc: 52.55 ng/ml



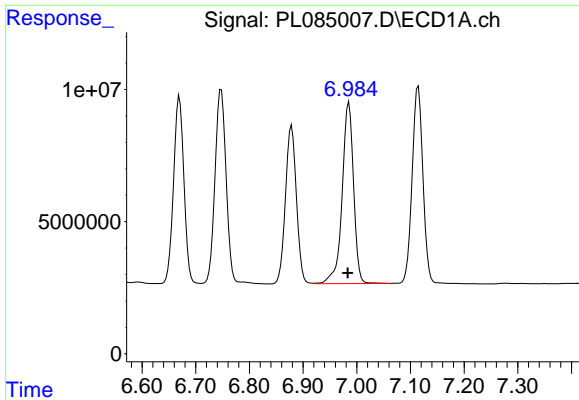
#16 4,4'-DDD

R.T.: 6.670 min
 Delta R.T.: 0.003 min
 Response: 94814407
 Conc: 56.55 ng/ml



#16 4,4'-DDD

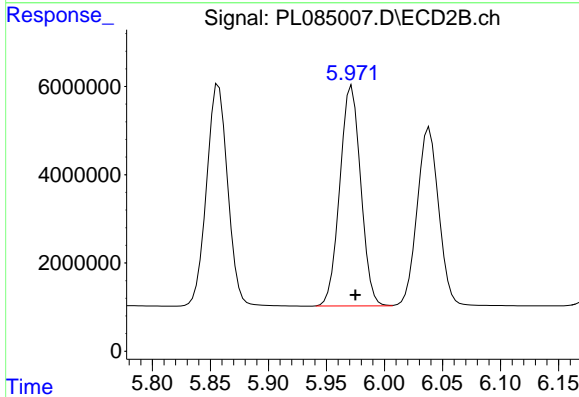
R.T.: 5.720 min
 Delta R.T.: -0.003 min
 Response: 59201029
 Conc: 57.30 ng/ml



#17 4,4'-DDT

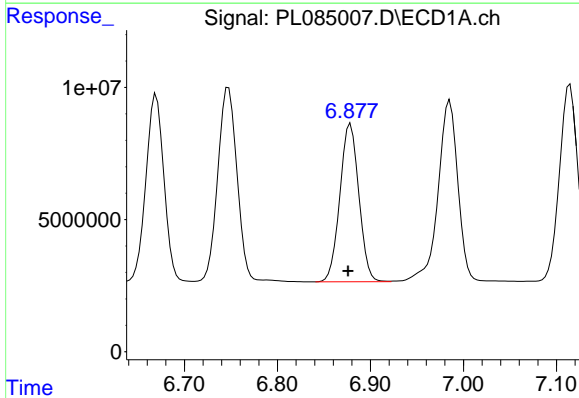
R.T.: 6.985 min
Delta R.T.: 0.002 min
Response: 101369836
Conc: 54.10 ng/ml

Instrument :
ECD_L
ClientSampleId :
PB155121BS



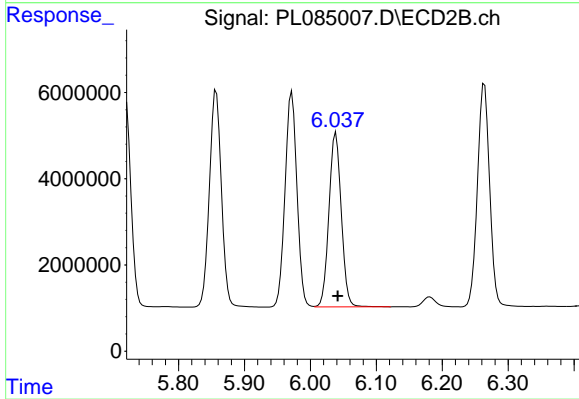
#17 4,4'-DDT

R.T.: 5.972 min
Delta R.T.: -0.003 min
Response: 62591259
Conc: 53.93 ng/ml



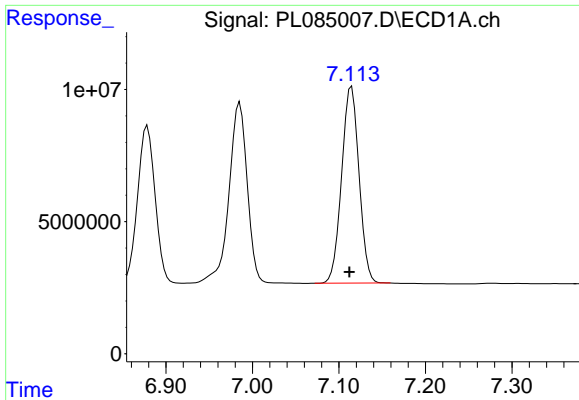
#18 Endrin aldehyde

R.T.: 6.879 min
Delta R.T.: 0.003 min
Response: 84812825
Conc: 50.28 ng/ml



#18 Endrin aldehyde

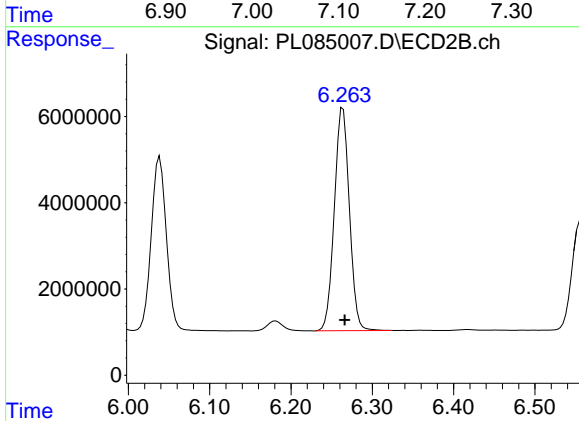
R.T.: 6.039 min
Delta R.T.: -0.003 min
Response: 52395728
Conc: 52.83 ng/ml



#19 Endosulfan Sulfate

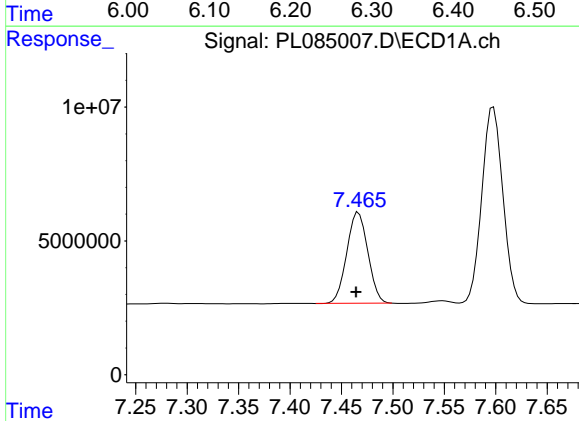
R.T.: 7.115 min
 Delta R.T.: 0.002 min
 Response: 103466500
 Conc: 51.79 ng/ml

Instrument :
 ECD_L
 ClientSampleId :
 PB155121BS



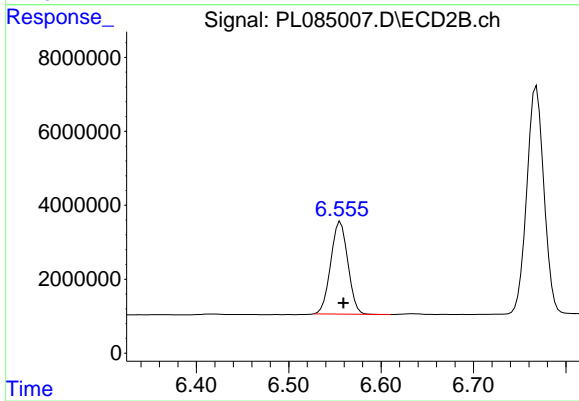
#19 Endosulfan Sulfate

R.T.: 6.264 min
 Delta R.T.: -0.002 min
 Response: 66476530
 Conc: 55.90 ng/ml



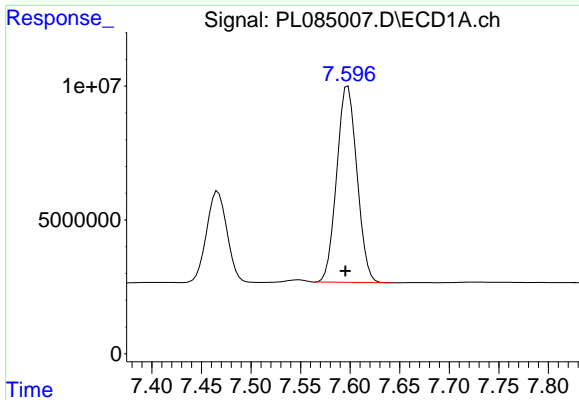
#20 Methoxychlor

R.T.: 7.467 min
 Delta R.T.: 0.003 min
 Response: 48529876
 Conc: 50.57 ng/ml



#20 Methoxychlor

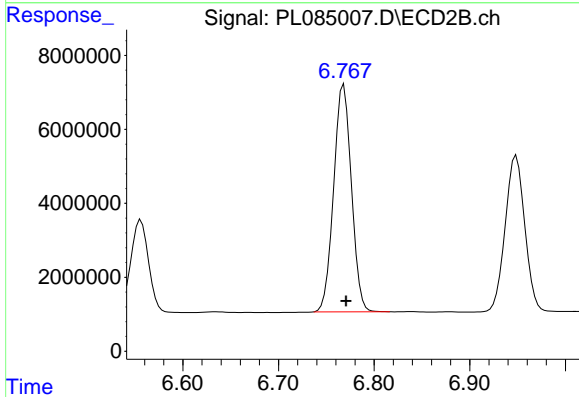
R.T.: 6.556 min
 Delta R.T.: -0.003 min
 Response: 32135061
 Conc: 46.84 ng/ml



#21 Endrin ketone

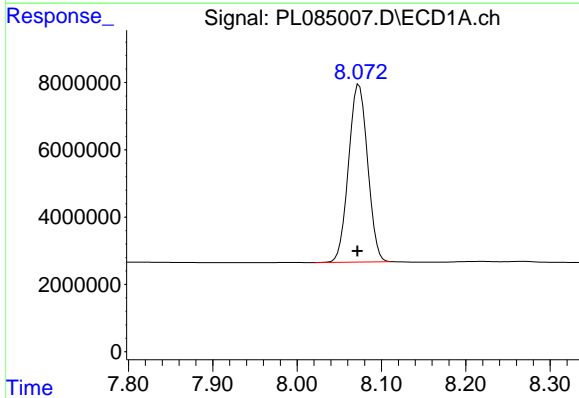
R.T.: 7.598 min
 Delta R.T.: 0.002 min
 Response: 104132148
 Conc: 52.05 ng/ml

Instrument :
 ECD_L
 ClientSampleId :
 PB155121BS



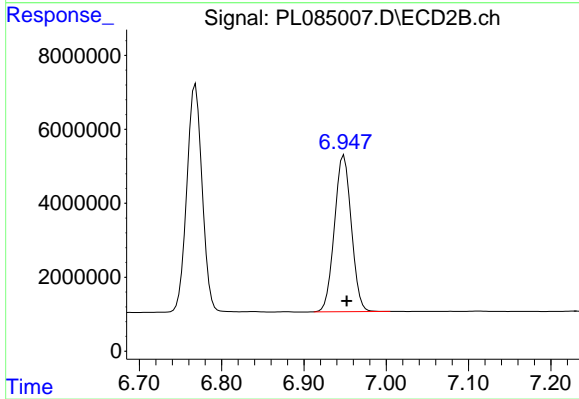
#21 Endrin ketone

R.T.: 6.768 min
 Delta R.T.: -0.002 min
 Response: 79221058
 Conc: 54.91 ng/ml



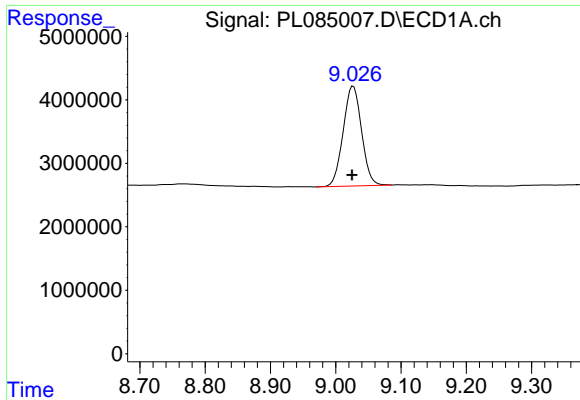
#22 Mirex

R.T.: 8.074 min
 Delta R.T.: 0.002 min
 Response: 82946921
 Conc: 49.94 ng/ml



#22 Mirex

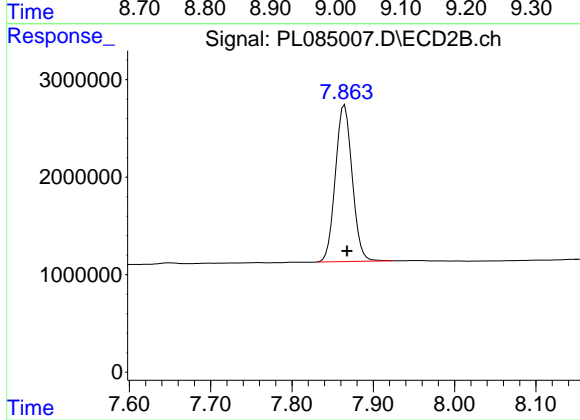
R.T.: 6.949 min
 Delta R.T.: -0.003 min
 Response: 60234640
 Conc: 52.23 ng/ml



#28 Decachlorobiphenyl

R.T.: 9.027 min
Delta R.T.: 0.002 min
Response: 30758273
Conc: 18.90 ng/ml

Instrument :
ECD_L
ClientSampleId :
PB155121BS



#28 Decachlorobiphenyl

R.T.: 7.865 min
Delta R.T.: -0.003 min
Response: 23088159
Conc: 18.52 ng/ml