

Data Path : Z:\pestpcbsrv\HPCHEM1\ECD_L\Data\PL082823\
 Data File : PL085008.D
 Signal(s) : Signal #1: ECD1A.ch Signal #2: ECD2B.ch
 Acq On : 28 Aug 2023 10:14
 Operator : AR\AJ
 Sample : PB155121BSD
 Misc :
 ALS Vial : 7 Sample Multiplier: 1

Instrument :
 ECD_L
 ClientSampleId :
 PB155121BSD

Integration File signal 1: autoint1.e
 Integration File signal 2: autoint2.e
 Quant Time: Aug 28 22:04:39 2023
 Quant Method : Z:\pestpcbsrv\HPCHEM1\ECD_L\methods\PL080323.M
 Quant Title : GC Extractables
 QLast Update : Thu Aug 03 16:21:43 2023
 Response via : Initial Calibration
 Integrator: ChemStation

Volume Inj. : 1 µl
 Signal #1 Phase : ZB-MR2 Signal #2 Phase: ZB-MR1
 Signal #1 Info : 30M x 0.32mm x0.2 Signal #2 Info : 30M x 0.32mm x0.5µm

Compound	RT#1	RT#2	Resp#1	Resp#2	ng/ml	ng/ml

System Monitoring Compounds						
1) SA Tetrachlo...	3.477	2.684	38839255	18523796	16.716	17.035
28) SA Decachlor...	9.025	7.864	30175713	22958130	18.546	18.414
Target Compounds						
2) A alpha-BHC	3.935	3.189	177.5E6	86490347	53.755	56.014
3) MA gamma-BHC...	4.269	3.520	166.9E6	81051611	52.327	53.340
4) MA Heptachlor	4.861	3.861	188.6E6	80242172	56.071	56.344
5) MB Aldrin	5.203	4.140	171.6E6	79491903	51.929	54.694
6) B beta-BHC	4.468	3.822	73110460	34771679	52.337	51.896
7) B delta-BHC	4.715	4.050	169.1E6	81308423	52.450	53.555
8) B Heptachlo...	5.633	4.647	156.2E6	73155017	51.834	55.136
9) A Endosulfan I	6.019	5.017	135.6E6	69637749	51.533	56.191
10) B gamma-Chl...	5.891	4.900	148.7E6	76051743	51.931	56.075
11) B alpha-Chl...	5.970	4.964	144.4E6	75243877	51.152	55.225
12) B 4,4'-DDE	6.149	5.161	123.8E6	69374948	53.944	56.335
13) MA Dieldrin	6.296	5.284	132.0E6	73737822	49.943	54.307
14) MA Endrin	6.526	5.558	108.5E6	65698606	49.764	53.710
15) B Endosulfa...	6.747	5.856	102.6E6	62876967	48.515	52.111
16) A 4,4'-DDD	6.668	5.719	93581585	58601289	55.817	56.716
17) MA 4,4'-DDT	6.984	5.971	99618356	62171214	53.166	53.570
18) B Endrin al...	6.878	6.038	83383629	51761634	49.429	52.192
19) B Endosulfa...	7.113	6.263	102.7E6	65966627	51.390	55.472
20) A Methoxychlor	7.466	6.555	48305972	32256095	50.335	47.014
21) B Endrin ke...	7.597	6.767	103.0E6	78244921	51.469	54.231
22) Mirex	8.073	6.947	82011170	59847396	49.380	51.893

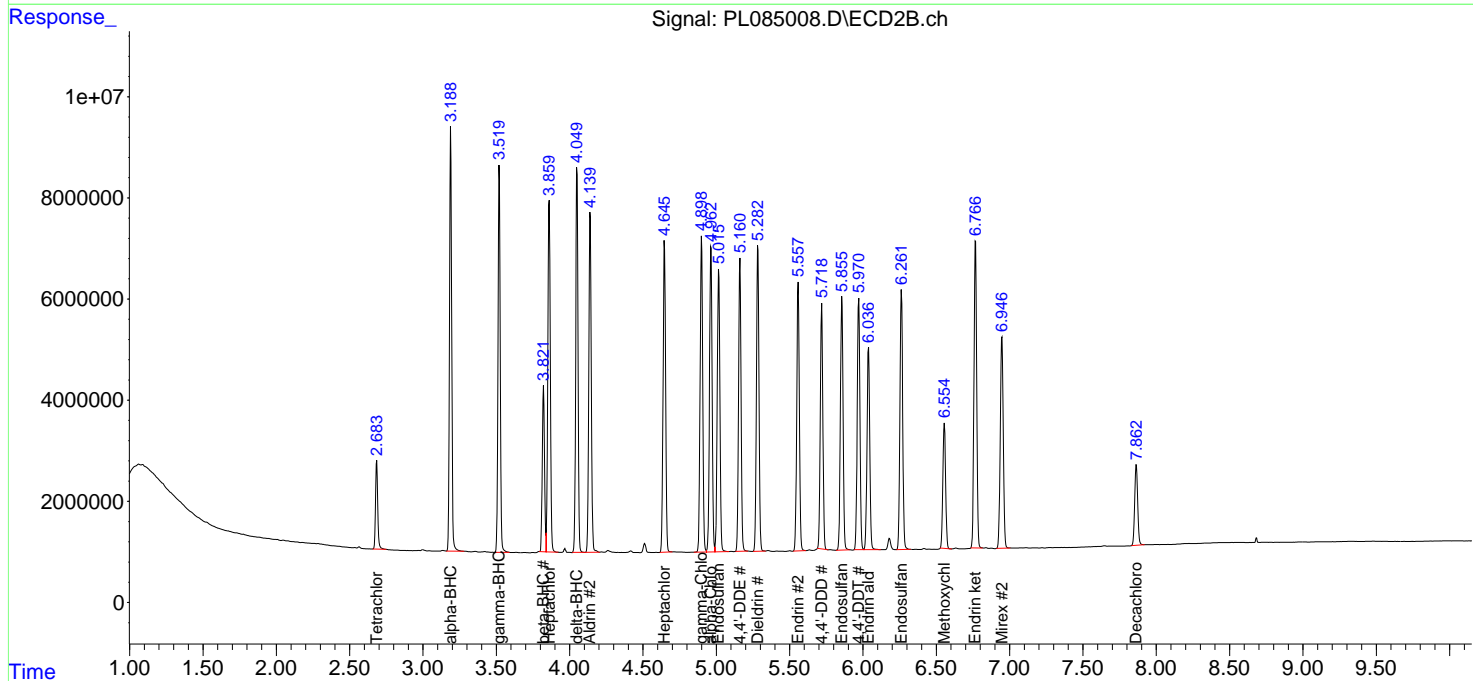
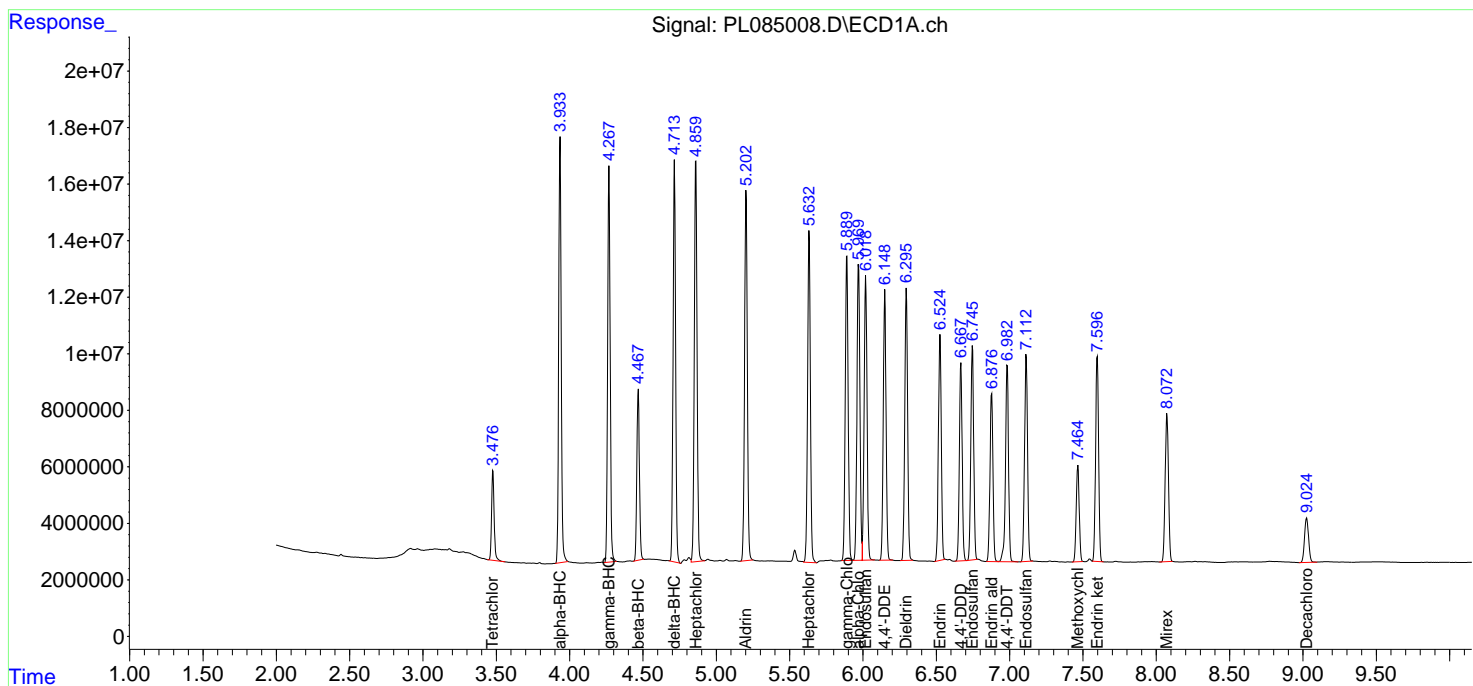
(f)=RT Delta > 1/2 Window (#)=Amounts differ by > 25% (m)=manual int.

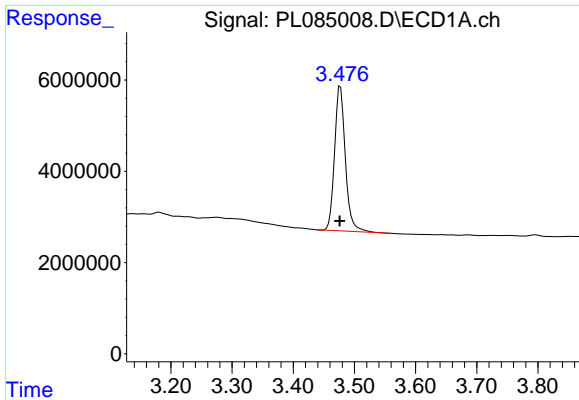
Data Path : Z:\pestpcbsrv\HPCHEM1\ECD_L\Data\PL082823\
 Data File : PL085008.D
 Signal(s) : Signal #1: ECD1A.ch Signal #2: ECD2B.ch
 Acq On : 28 Aug 2023 10:14
 Operator : AR\AJ
 Sample : PB155121BSD
 Misc :
 ALS Vial : 7 Sample Multiplier: 1

Instrument :
 ECD_L
 ClientSampleId :
 PB155121BSD

Integration File signal 1: autoint1.e
 Integration File signal 2: autoint2.e
 Quant Time: Aug 28 22:04:39 2023
 Quant Method : Z:\pestpcbsrv\HPCHEM1\ECD_L\methods\PL080323.M
 Quant Title : GC Extractables
 QLast Update : Thu Aug 03 16:21:43 2023
 Response via : Initial Calibration
 Integrator: ChemStation

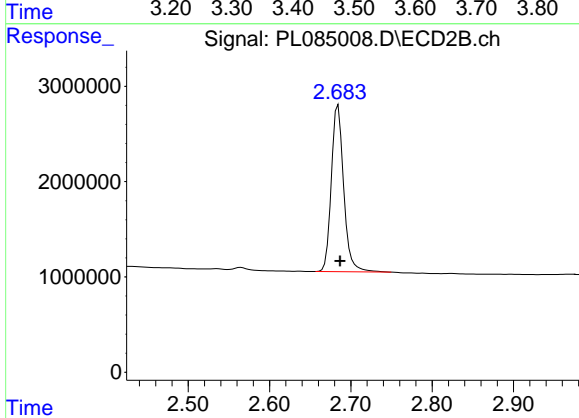
Volume Inj. : 1 µl
 Signal #1 Phase : ZB-MR2 Signal #2 Phase: ZB-MR1
 Signal #1 Info : 30M x 0.32mm x0.2 Signal #2 Info : 30M x 0.32mm x0.5µm



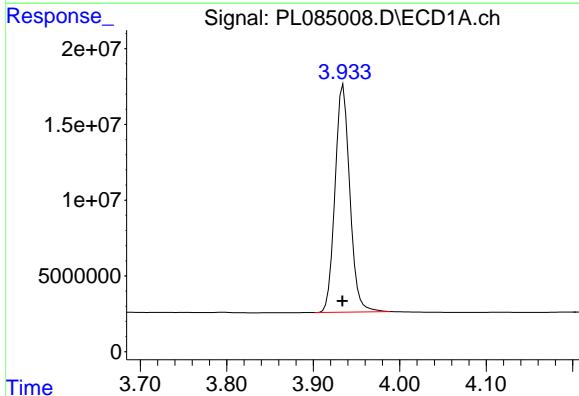


#1 Tetrachloro-m-xylene
 R.T.: 3.477 min
 Delta R.T.: 0.001 min
 Response: 38839255
 Conc: 16.72 ng/ml

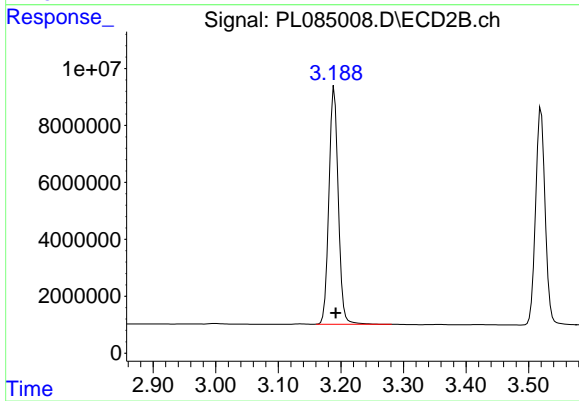
Instrument :
 ECD_L
 ClientSampleId :
 PB155121BSD



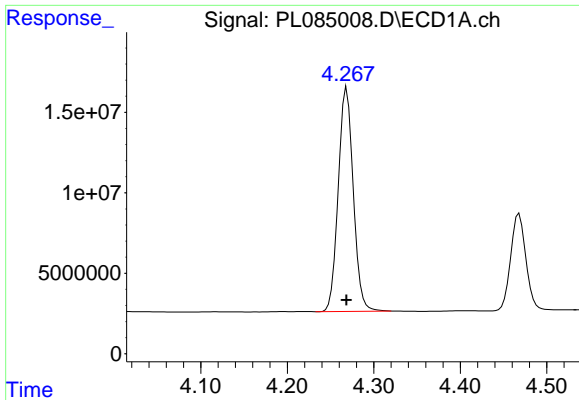
#1 Tetrachloro-m-xylene
 R.T.: 2.684 min
 Delta R.T.: -0.002 min
 Response: 18523796
 Conc: 17.03 ng/ml



#2 alpha-BHC
 R.T.: 3.935 min
 Delta R.T.: 0.000 min
 Response: 177466753
 Conc: 53.75 ng/ml

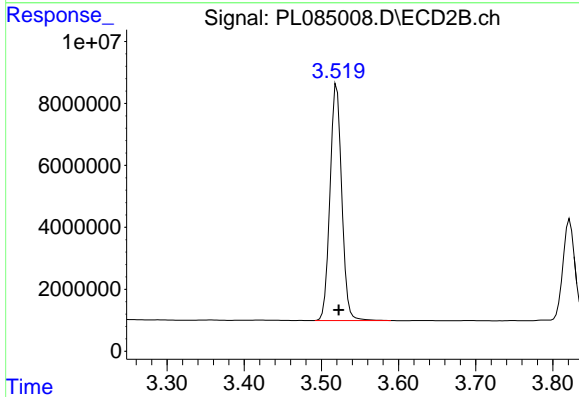


#2 alpha-BHC
 R.T.: 3.189 min
 Delta R.T.: -0.002 min
 Response: 86490347
 Conc: 56.01 ng/ml

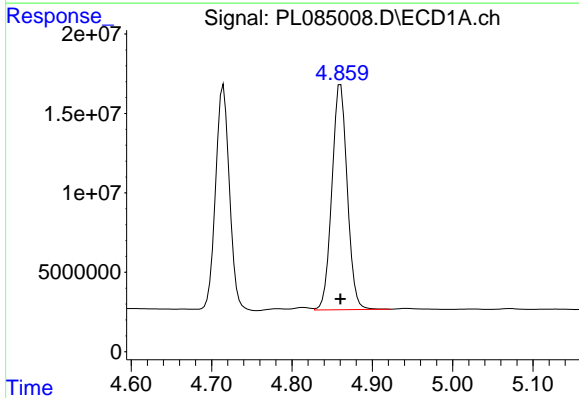


#3 gamma-BHC (Lindane)
 R.T.: 4.269 min
 Delta R.T.: 0.000 min
 Response: 166922813
 Conc: 52.33 ng/ml

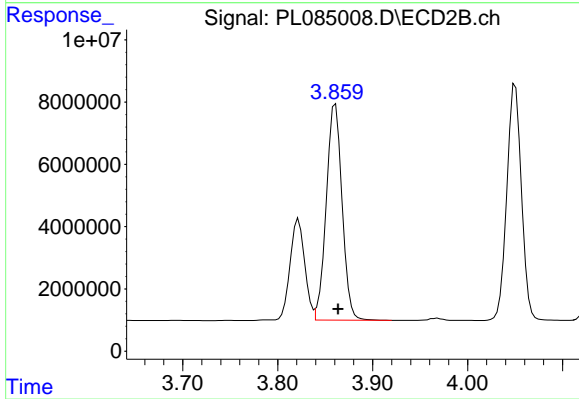
Instrument :
 ECD_L
 ClientSampleId :
 PB155121BSD



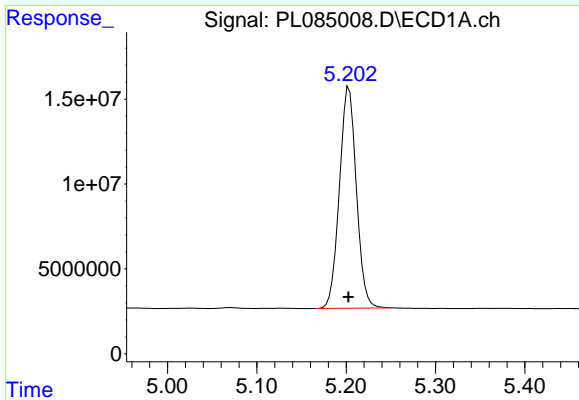
#3 gamma-BHC (Lindane)
 R.T.: 3.520 min
 Delta R.T.: -0.003 min
 Response: 81051611
 Conc: 53.34 ng/ml



#4 Heptachlor
 R.T.: 4.861 min
 Delta R.T.: 0.000 min
 Response: 188558220
 Conc: 56.07 ng/ml

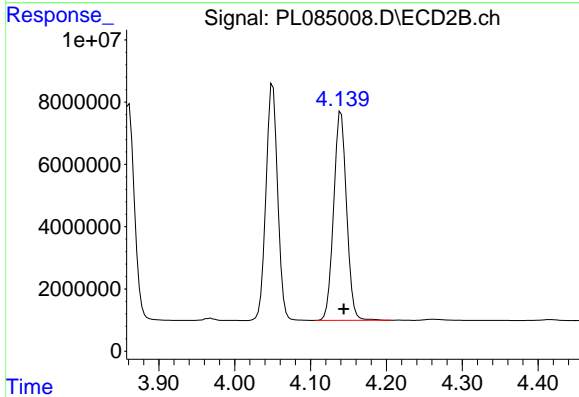


#4 Heptachlor
 R.T.: 3.861 min
 Delta R.T.: -0.003 min
 Response: 80242172
 Conc: 56.34 ng/ml

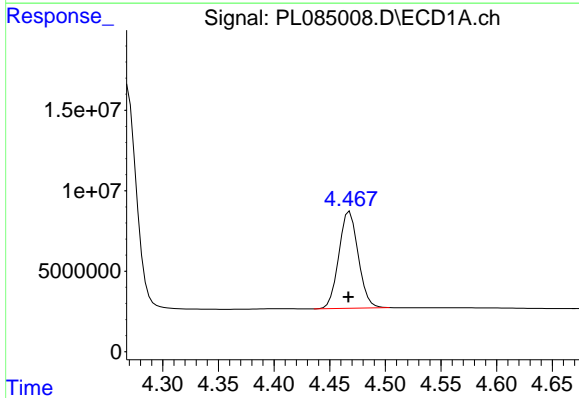


#5 Aldrin
 R.T.: 5.203 min
 Delta R.T.: 0.000 min
 Response: 171642950
 Conc: 51.93 ng/ml

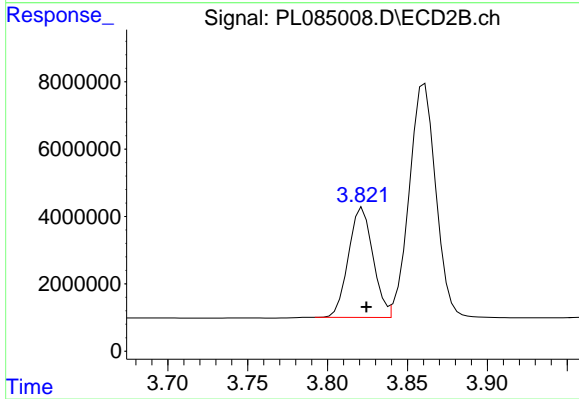
Instrument :
 ECD_L
 ClientSampleId :
 PB155121BSD



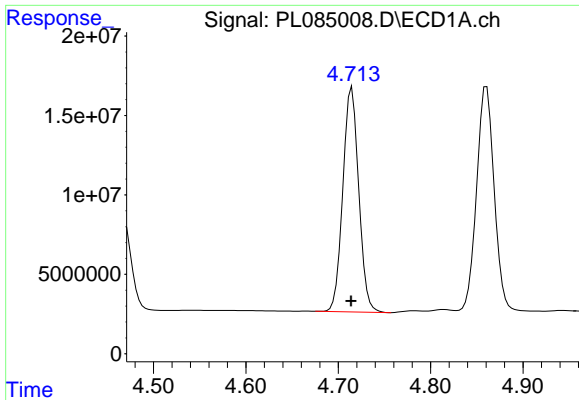
#5 Aldrin
 R.T.: 4.140 min
 Delta R.T.: -0.003 min
 Response: 79491903
 Conc: 54.69 ng/ml



#6 beta-BHC
 R.T.: 4.468 min
 Delta R.T.: 0.001 min
 Response: 73110460
 Conc: 52.34 ng/ml



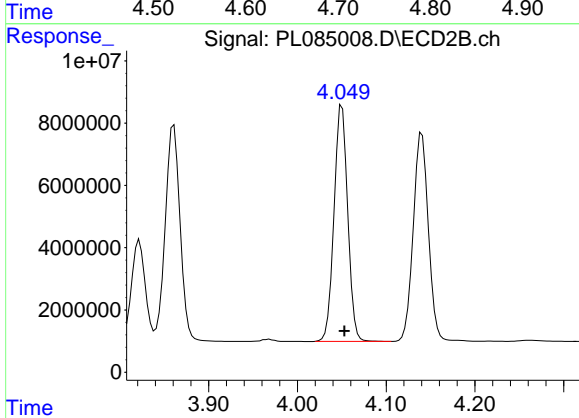
#6 beta-BHC
 R.T.: 3.822 min
 Delta R.T.: -0.002 min
 Response: 34771679
 Conc: 51.90 ng/ml



#7 delta-BHC

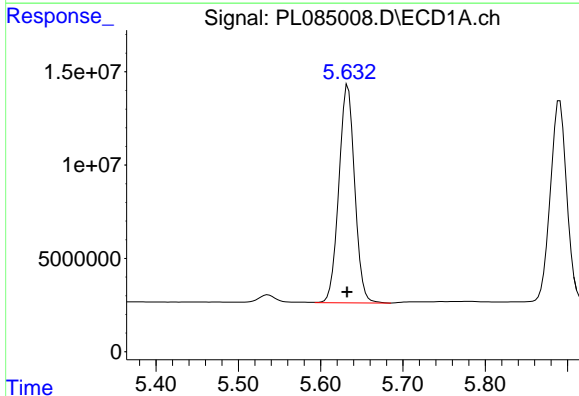
R.T.: 4.715 min
 Delta R.T.: 0.000 min
 Response: 169137108
 Conc: 52.45 ng/ml

Instrument :
 ECD_L
 ClientSampleId :
 PB155121BSD



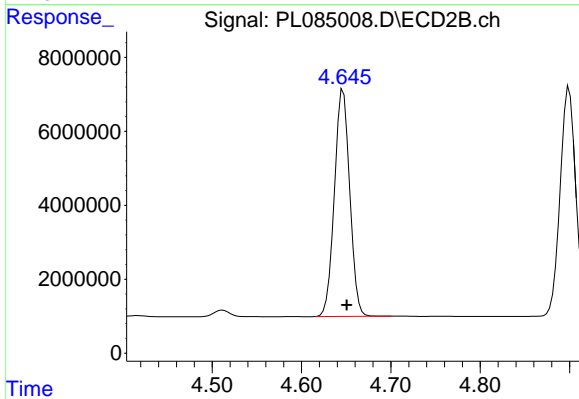
#7 delta-BHC

R.T.: 4.050 min
 Delta R.T.: -0.003 min
 Response: 81308423
 Conc: 53.56 ng/ml



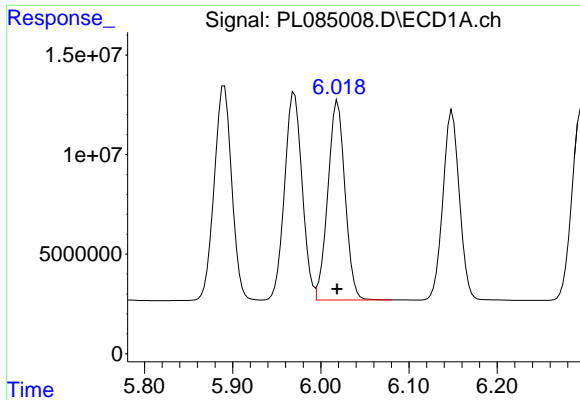
#8 Heptachlor epoxide

R.T.: 5.633 min
 Delta R.T.: 0.001 min
 Response: 156161445
 Conc: 51.83 ng/ml



#8 Heptachlor epoxide

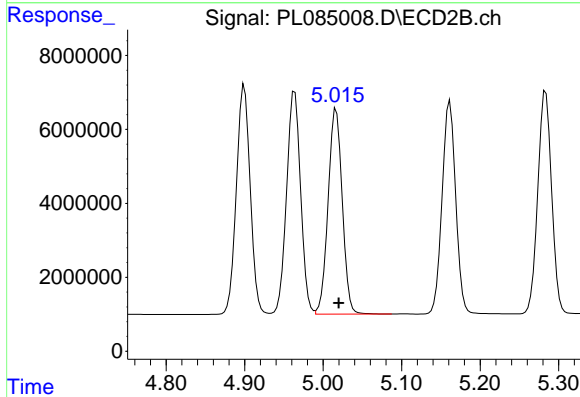
R.T.: 4.647 min
 Delta R.T.: -0.004 min
 Response: 73155017
 Conc: 55.14 ng/ml



#9 Endosulfan I

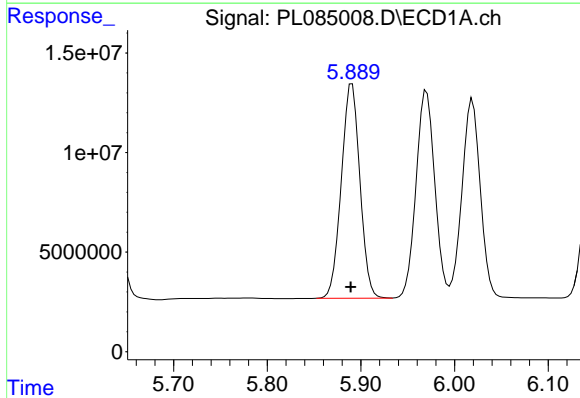
R.T.: 6.019 min
 Delta R.T.: 0.000 min
 Response: 135648899
 Conc: 51.53 ng/ml

Instrument :
 ECD_L
 ClientSampleId :
 PB155121BSD



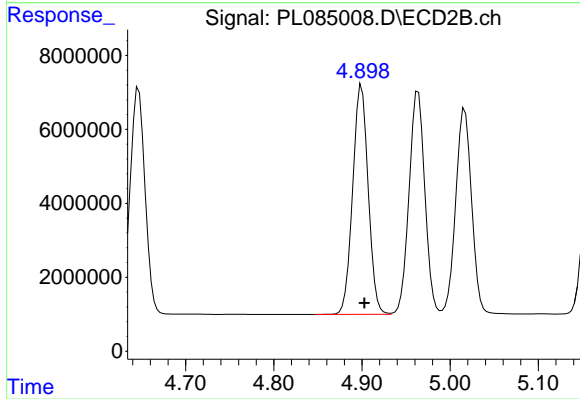
#9 Endosulfan I

R.T.: 5.017 min
 Delta R.T.: -0.003 min
 Response: 69637749
 Conc: 56.19 ng/ml



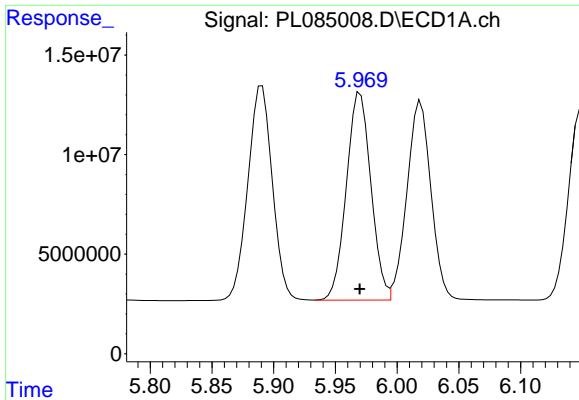
#10 gamma-Chlordane

R.T.: 5.891 min
 Delta R.T.: 0.001 min
 Response: 148712165
 Conc: 51.93 ng/ml



#10 gamma-Chlordane

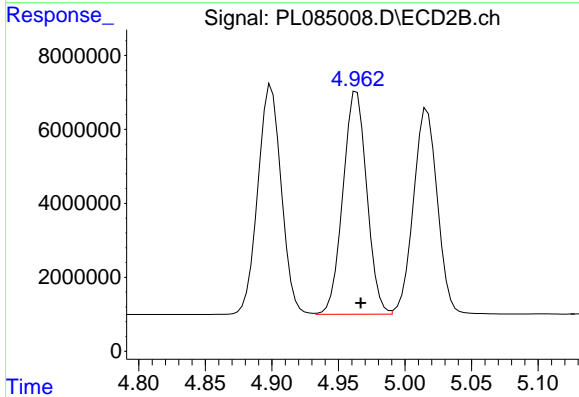
R.T.: 4.900 min
 Delta R.T.: -0.003 min
 Response: 76051743
 Conc: 56.07 ng/ml



#11 alpha-Chlordane

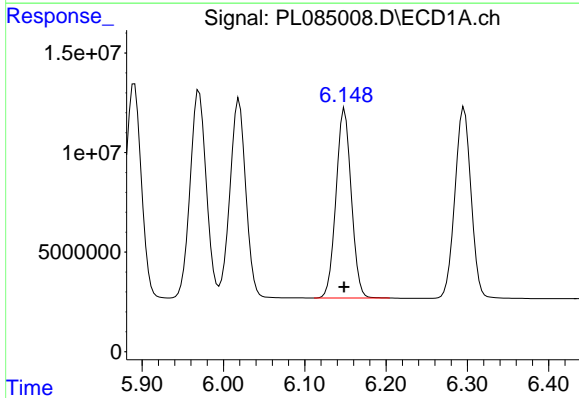
R.T.: 5.970 min
Delta R.T.: 0.000 min
Response: 144412011
Conc: 51.15 ng/ml

Instrument :
ECD_L
ClientSampleId :
PB155121BSD



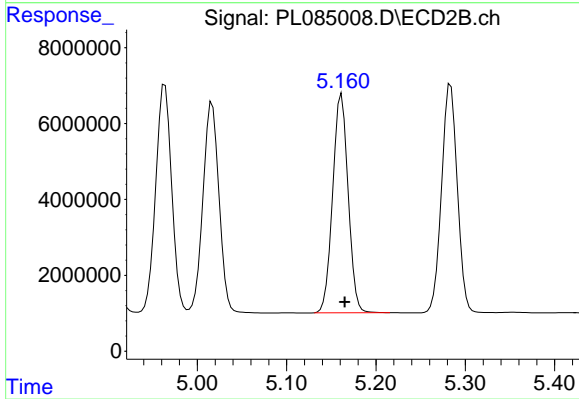
#11 alpha-Chlordane

R.T.: 4.964 min
Delta R.T.: -0.003 min
Response: 75243877
Conc: 55.22 ng/ml



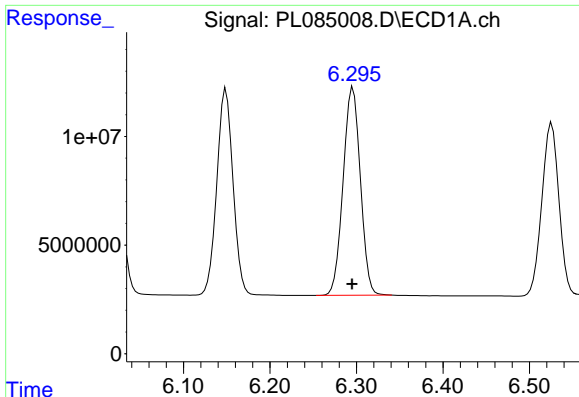
#12 4,4'-DDE

R.T.: 6.149 min
Delta R.T.: 0.000 min
Response: 123816785
Conc: 53.94 ng/ml



#12 4,4'-DDE

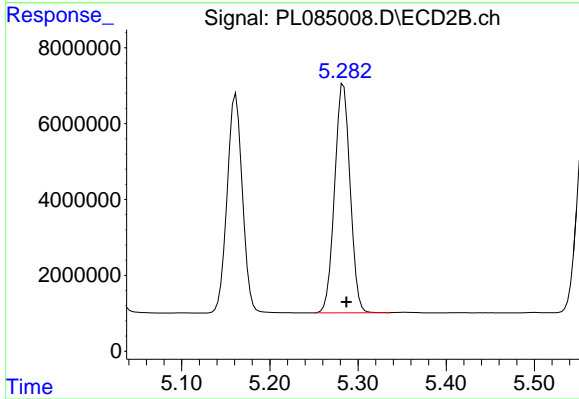
R.T.: 5.161 min
Delta R.T.: -0.004 min
Response: 69374948
Conc: 56.34 ng/ml



#13 Dieldrin

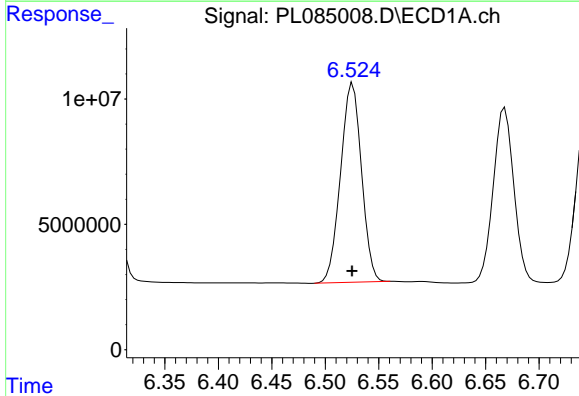
R.T.: 6.296 min
 Delta R.T.: 0.000 min
 Response: 131979507
 Conc: 49.94 ng/ml

Instrument :
 ECD_L
 ClientSampleId :
 PB155121BSD



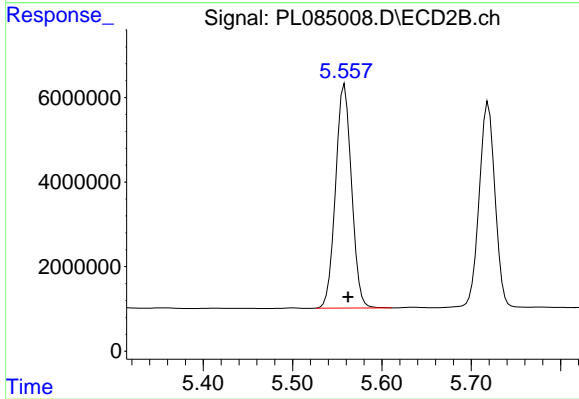
#13 Dieldrin

R.T.: 5.284 min
 Delta R.T.: -0.003 min
 Response: 73737822
 Conc: 54.31 ng/ml



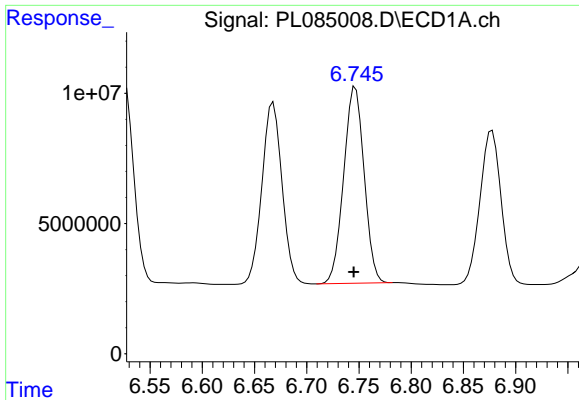
#14 Endrin

R.T.: 6.526 min
 Delta R.T.: 0.000 min
 Response: 108535278
 Conc: 49.76 ng/ml



#14 Endrin

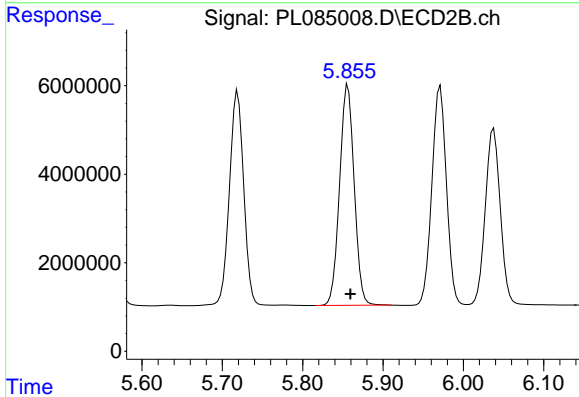
R.T.: 5.558 min
 Delta R.T.: -0.004 min
 Response: 65698606
 Conc: 53.71 ng/ml



#15 Endosulfan II

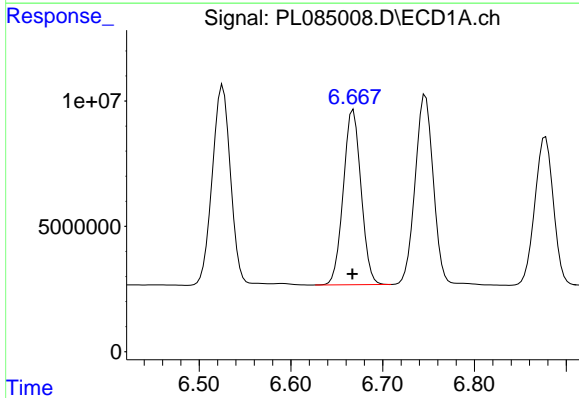
R.T.: 6.747 min
 Delta R.T.: 0.002 min
 Response: 102609761
 Conc: 48.52 ng/ml

Instrument :
 ECD_L
 ClientSampleId :
 PB155121BSD



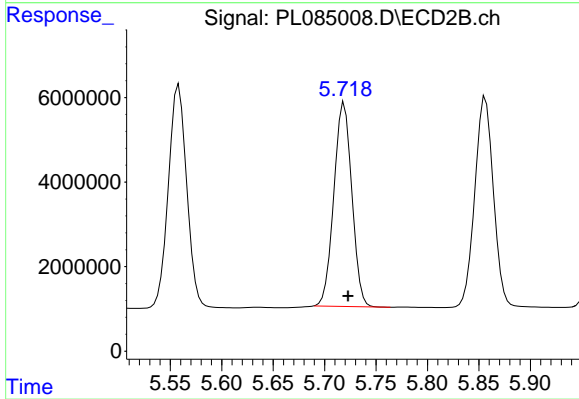
#15 Endosulfan II

R.T.: 5.856 min
 Delta R.T.: -0.003 min
 Response: 62876967
 Conc: 52.11 ng/ml



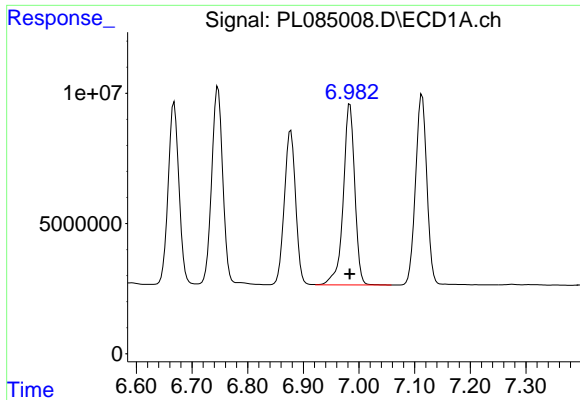
#16 4,4'-DDD

R.T.: 6.668 min
 Delta R.T.: 0.000 min
 Response: 93581585
 Conc: 55.82 ng/ml



#16 4,4'-DDD

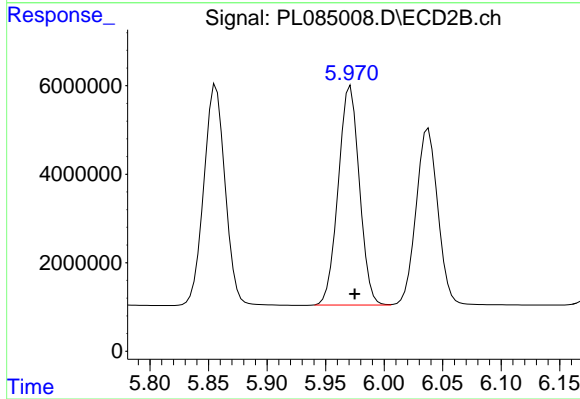
R.T.: 5.719 min
 Delta R.T.: -0.004 min
 Response: 58601289
 Conc: 56.72 ng/ml



#17 4,4'-DDT

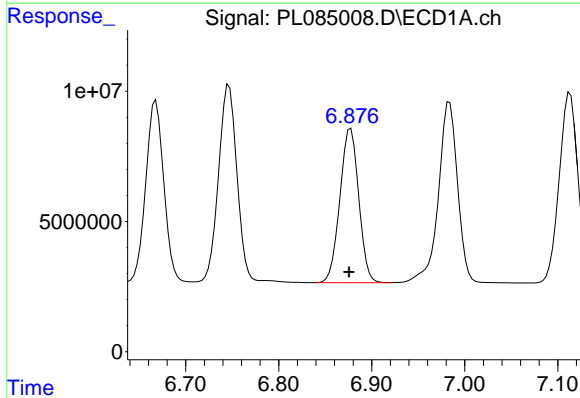
R.T.: 6.984 min
 Delta R.T.: 0.000 min
 Response: 99618356
 Conc: 53.17 ng/ml

Instrument :
 ECD_L
 ClientSampleId :
 PB155121BSD



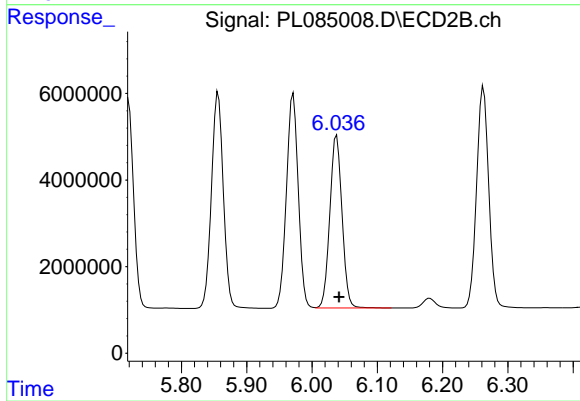
#17 4,4'-DDT

R.T.: 5.971 min
 Delta R.T.: -0.004 min
 Response: 62171214
 Conc: 53.57 ng/ml



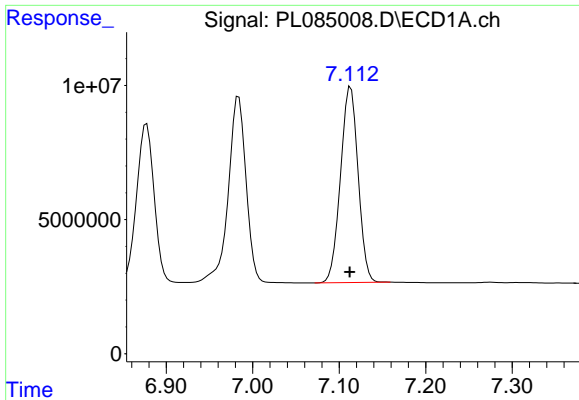
#18 Endrin aldehyde

R.T.: 6.878 min
 Delta R.T.: 0.002 min
 Response: 83383629
 Conc: 49.43 ng/ml



#18 Endrin aldehyde

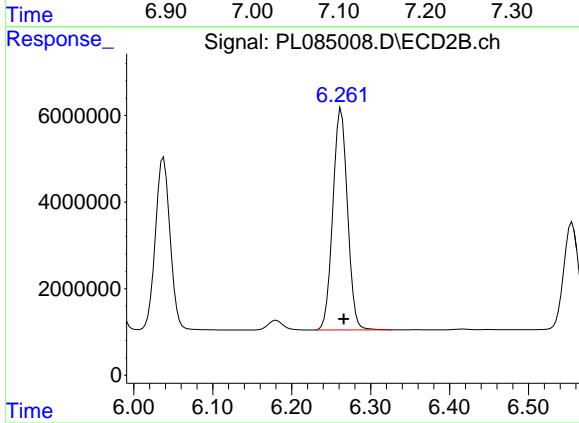
R.T.: 6.038 min
 Delta R.T.: -0.003 min
 Response: 51761634
 Conc: 52.19 ng/ml



#19 Endosulfan Sulfate

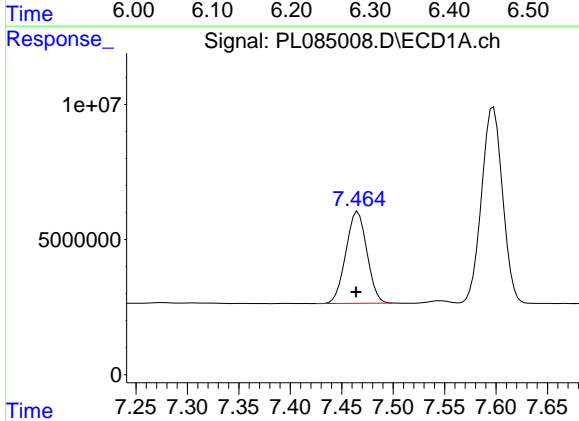
R.T.: 7.113 min
 Delta R.T.: 0.001 min
 Response: 102660864
 Conc: 51.39 ng/ml

Instrument :
 ECD_L
 ClientSampleId :
 PB155121BSD



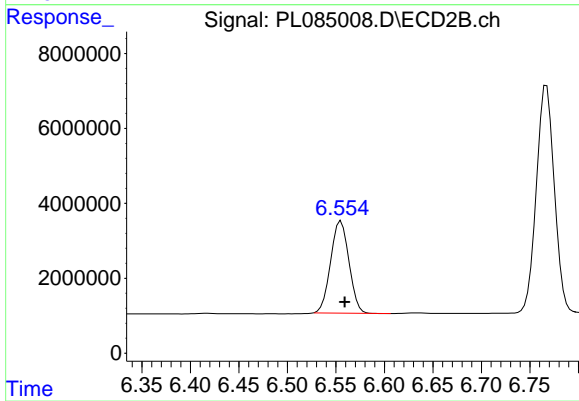
#19 Endosulfan Sulfate

R.T.: 6.263 min
 Delta R.T.: -0.003 min
 Response: 65966627
 Conc: 55.47 ng/ml



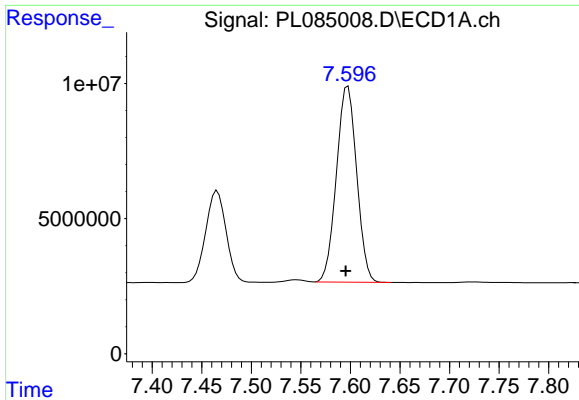
#20 Methoxychlor

R.T.: 7.466 min
 Delta R.T.: 0.002 min
 Response: 48305972
 Conc: 50.34 ng/ml



#20 Methoxychlor

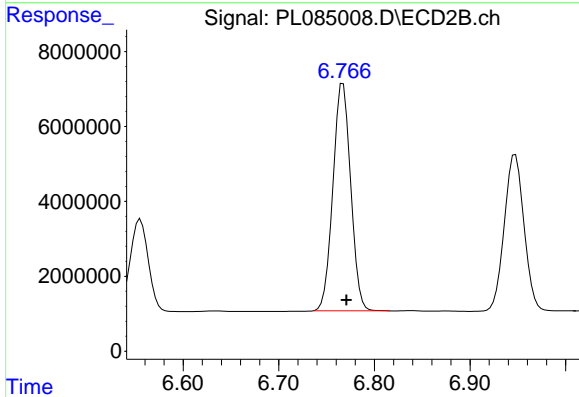
R.T.: 6.555 min
 Delta R.T.: -0.004 min
 Response: 32256095
 Conc: 47.01 ng/ml



#21 Endrin ketone

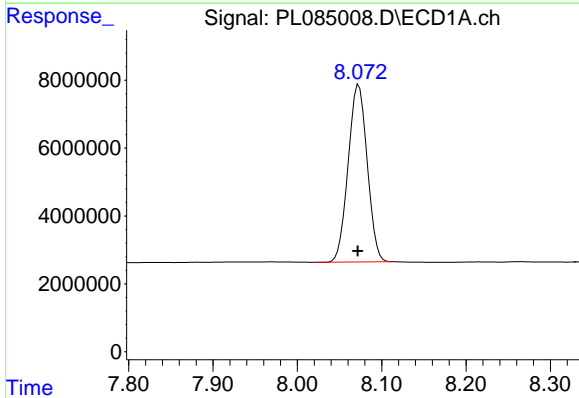
R.T.: 7.597 min
 Delta R.T.: 0.002 min
 Response: 102960856
 Conc: 51.47 ng/ml

Instrument :
 ECD_L
 ClientSampleId :
 PB155121BSD



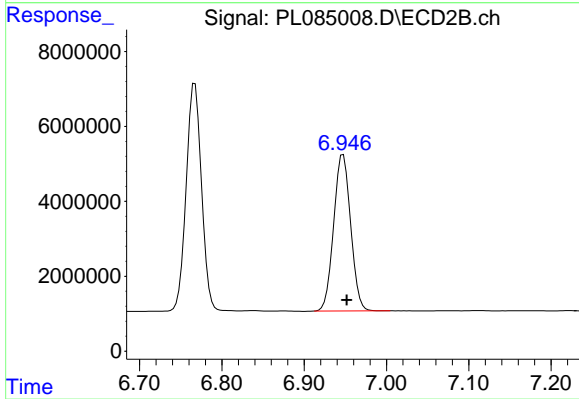
#21 Endrin ketone

R.T.: 6.767 min
 Delta R.T.: -0.004 min
 Response: 78244921
 Conc: 54.23 ng/ml



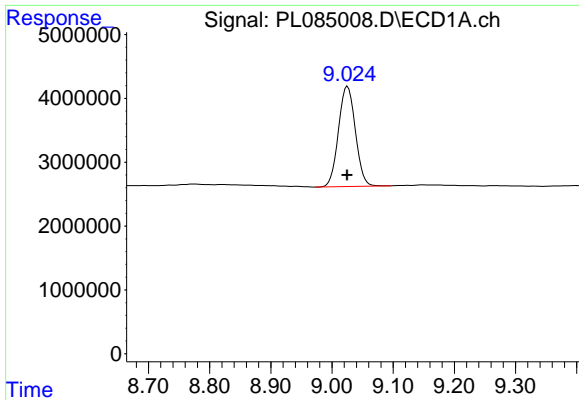
#22 Mirex

R.T.: 8.073 min
 Delta R.T.: 0.002 min
 Response: 82011170
 Conc: 49.38 ng/ml



#22 Mirex

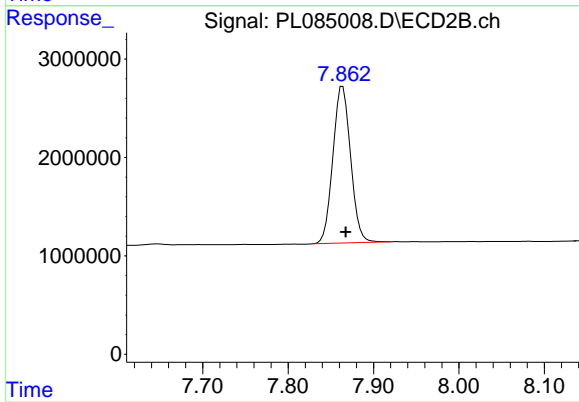
R.T.: 6.947 min
 Delta R.T.: -0.005 min
 Response: 59847396
 Conc: 51.89 ng/ml



#28 Decachlorobiphenyl

R.T.: 9.025 min
Delta R.T.: 0.000 min
Response: 30175713
Conc: 18.55 ng/ml

Instrument :
ECD_L
ClientSampleId :
PB155121BSD



#28 Decachlorobiphenyl

R.T.: 7.864 min
Delta R.T.: -0.004 min
Response: 22958130
Conc: 18.41 ng/ml