

Data Path : Z:\pestpcbsrv\HPCHEM1\ECD_L\Data\PL082823\
 Data File : PL085011.D
 Signal(s) : Signal #1: ECD1A.ch Signal #2: ECD2B.ch
 Acq On : 28 Aug 2023 10:56
 Operator : AR\AJ
 Sample : 04177-01
 Misc :
 ALS Vial : 10 Sample Multiplier: 1

Instrument :
 ECD_L
ClientSampleId :
 EO-1-082523

Manual Integrations
APPROVED
 Reviewed By :Abdul Mirza 08/29/2023
 Supervised By :Ankita Jodhani 08/29/2023

Integration File signal 1: autoint1.e
 Integration File signal 2: autoint2.e
 Quant Time: Aug 28 22:05:39 2023
 Quant Method : Z:\pestpcbsrv\HPCHEM1\ECD_L\methods\PL080323.M
 Quant Title : GC Extractables
 QLast Update : Thu Aug 03 16:21:43 2023
 Response via : Initial Calibration
 Integrator: ChemStation

Volume Inj. : 1 µl
 Signal #1 Phase : ZB-MR2 Signal #2 Phase: ZB-MR1
 Signal #1 Info : 30M x 0.32mm x0.2 Signal #2 Info : 30M x 0.32mm x0.5µm

Compound	RT#1	RT#2	Resp#1	Resp#2	ng/ml	ng/ml

System Monitoring Compounds						
1) SA Tetrachlo...	3.477	2.684	17816555	9280961	7.668	8.535
28) SA Decachlor...	9.028	7.864	15841253	10807457	9.736	8.668
Target Compounds						
12) B 4,4'-DDE	6.149	5.161	2656027	1645418	1.157m	1.336
17) MA 4,4'-DDT	6.983	5.970	1243726	865163	0.664m	0.745

(f)=RT Delta > 1/2 Window (#)=Amounts differ by > 25% (m)=manual int.

Data Path : Z:\pestpcbsrv\HPCHEM1\ECD_L\Data\PL082823\
 Data File : PL085011.D
 Signal(s) : Signal #1: ECD1A.ch Signal #2: ECD2B.ch
 Acq On : 28 Aug 2023 10:56
 Operator : AR\AJ
 Sample : 04177-01
 Misc :
 ALS Vial : 10 Sample Multiplier: 1

Instrument :

ECD_L

ClientSampleId :

EO-1-082523

Manual Integrations

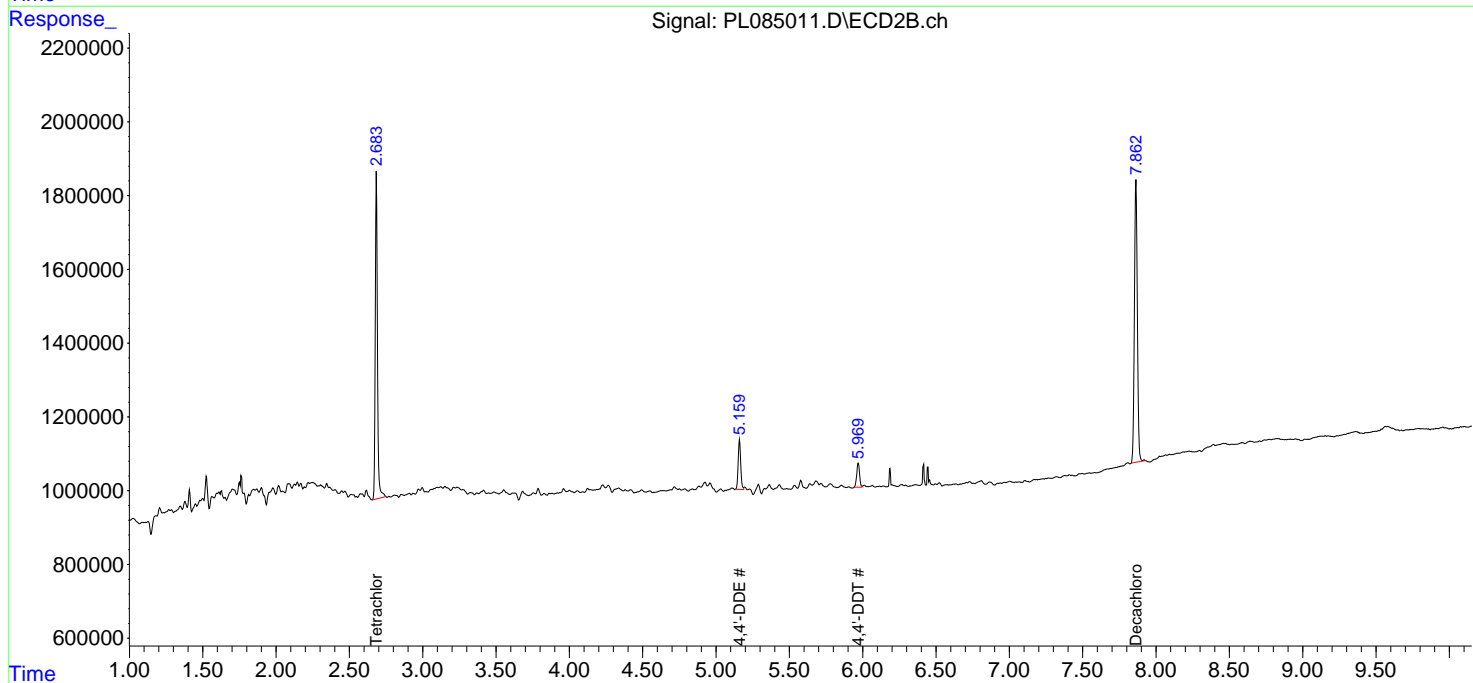
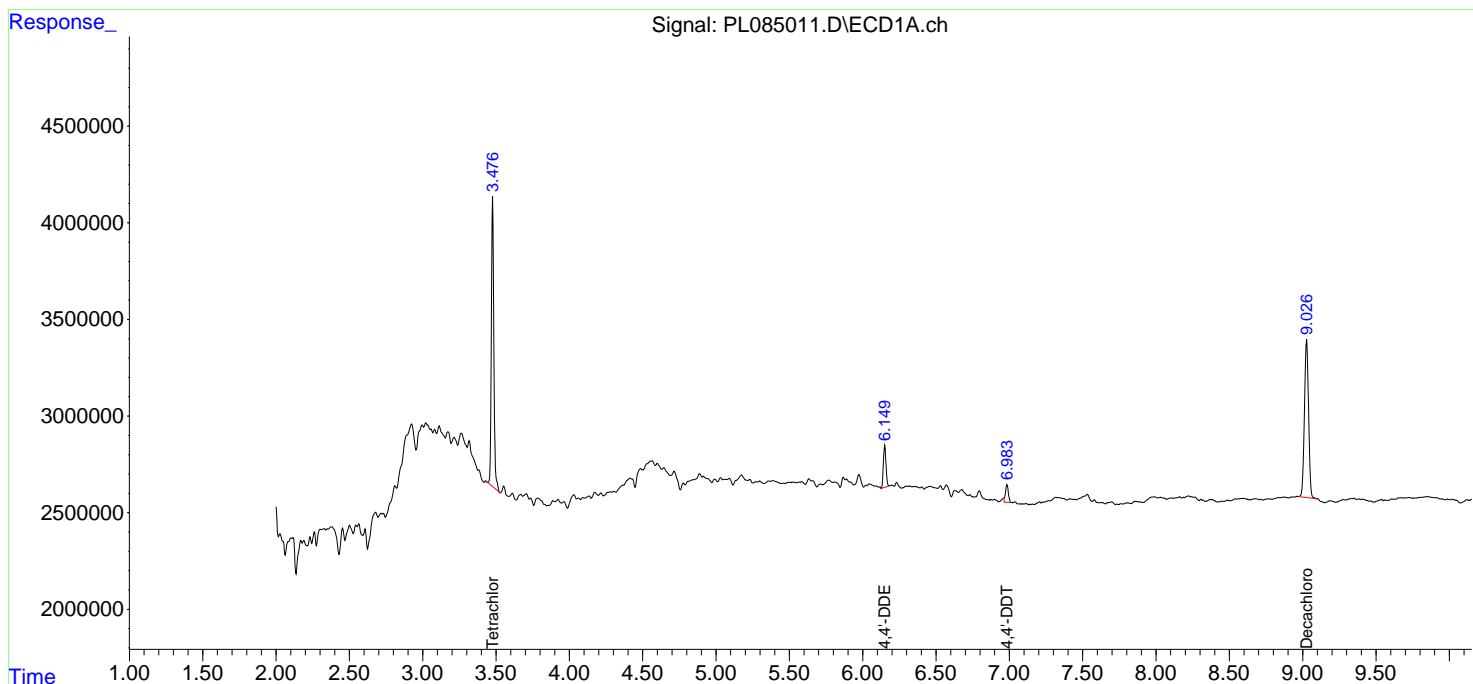
APPROVED

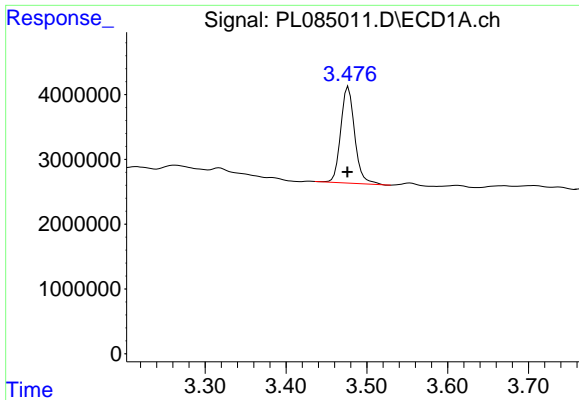
Reviewed By :Abdul Mirza 08/29/2023

Supervised By :Ankita Jodhani 08/29/2023

Integration File signal 1: autoint1.e
 Integration File signal 2: autoint2.e
 Quant Time: Aug 28 22:05:39 2023
 Quant Method : Z:\pestpcbsrv\HPCHEM1\ECD_L\methods\PL080323.M
 Quant Title : GC Extractables
 QLast Update : Thu Aug 03 16:21:43 2023
 Response via : Initial Calibration
 Integrator: ChemStation

Volume Inj. : 1 µl
 Signal #1 Phase : ZB-MR2 Signal #2 Phase: ZB-MR1
 Signal #1 Info : 30M x 0.32mm x0.2 Signal #2 Info : 30M x 0.32mm x0.5µm





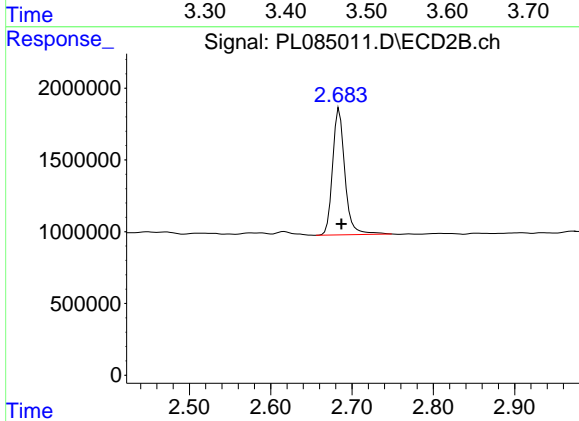
#1 Tetrachloro-m-xylene

R.T.: 3.477 min
 Delta R.T.: 0.001 min
 Response: 17816555
 Conc: 7.67 ng/ml

Instrument :
 ECD_L
 ClientSampleId :
 EO-1-082523

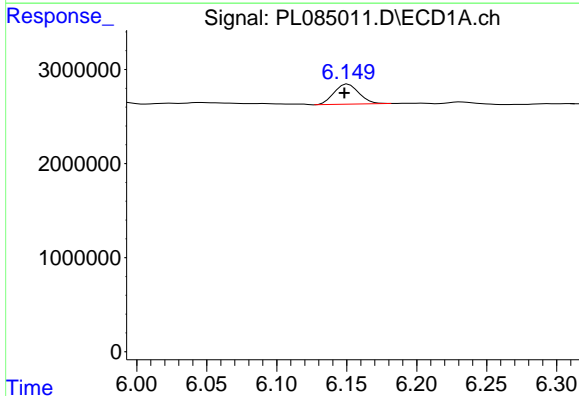
Manual Integrations
 APPROVED

Reviewed By :Abdul Mirza 08/29/2023
 Supervised By :Ankita Jodhani 08/29/2023



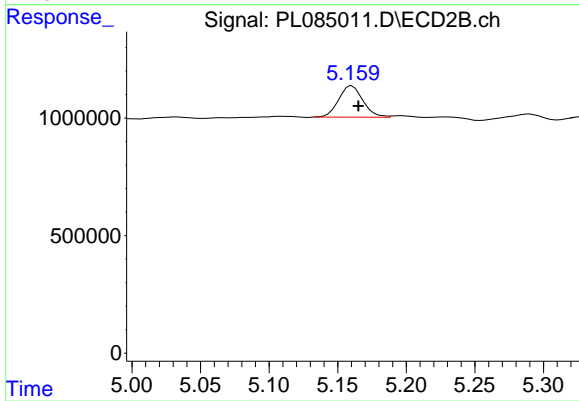
#1 Tetrachloro-m-xylene

R.T.: 2.684 min
 Delta R.T.: -0.002 min
 Response: 9280961
 Conc: 8.53 ng/ml



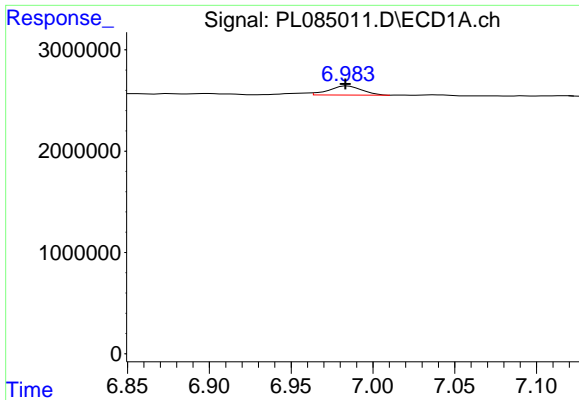
#12 4,4'-DDE

R.T.: 6.149 min
 Delta R.T.: 0.001 min
 Response: 2656027
 Conc: 1.16 ng/ml m



#12 4,4'-DDE

R.T.: 5.161 min
 Delta R.T.: -0.004 min
 Response: 1645418
 Conc: 1.34 ng/ml



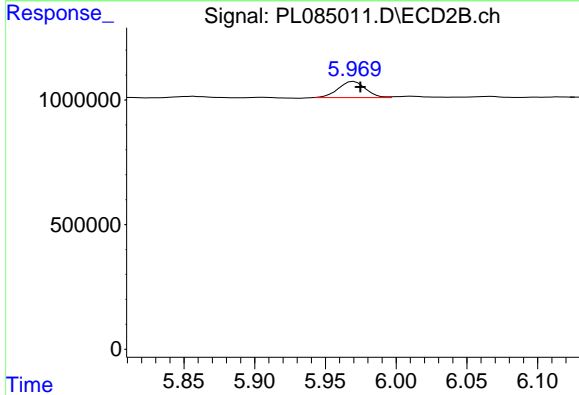
#17 4,4'-DDT

R.T.: 6.983 min
 Delta R.T.: 0.000 min
 Response: 1243726
 Conc: 0.66 ng/ml

Instrument : ECD_L
 Client Sample Id : EO-1-082523

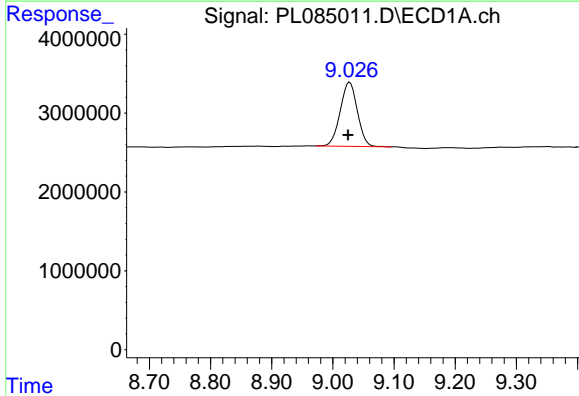
Manual Integrations
 APPROVED

Reviewed By :Abdul Mirza 08/29/2023
 Supervised By :Ankita Jodhani 08/29/2023



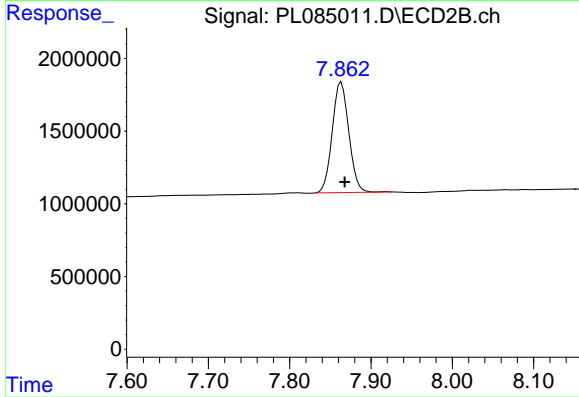
#17 4,4'-DDT

R.T.: 5.970 min
 Delta R.T.: -0.005 min
 Response: 865163
 Conc: 0.75 ng/ml



#28 Decachlorobiphenyl

R.T.: 9.028 min
 Delta R.T.: 0.003 min
 Response: 15841253
 Conc: 9.74 ng/ml



#28 Decachlorobiphenyl

R.T.: 7.864 min
 Delta R.T.: -0.004 min
 Response: 10807457
 Conc: 8.67 ng/ml