

Data Path : Z:\pestpcbsrv\HPCHEM1\ECD\_L\Data\PL082823\  
 Data File : PL085019.D  
 Signal(s) : Signal #1: ECD1A.ch Signal #2: ECD2B.ch  
 Acq On : 28 Aug 2023 13:15  
 Operator : AR\AJ  
 Sample : 04188-07  
 Misc :  
 ALS Vial : 18 Sample Multiplier: 1

Instrument :  
 ECD\_L  
 ClientSampleId :  
 WC-5

Integration File signal 1: autoint1.e  
 Integration File signal 2: autoint2.e  
 Quant Time: Aug 28 22:07:36 2023  
 Quant Method : Z:\pestpcbsrv\HPCHEM1\ECD\_L\methods\PL080323.M  
 Quant Title : GC Extractables  
 QLast Update : Thu Aug 03 16:21:43 2023  
 Response via : Initial Calibration  
 Integrator: ChemStation

Volume Inj. : 1 µl  
 Signal #1 Phase : ZB-MR2 Signal #2 Phase: ZB-MR1  
 Signal #1 Info : 30M x 0.32mm x0.2 Signal #2 Info : 30M x 0.32mm x0.5µm

Compound	RT#1	RT#2	Resp#1	Resp#2	ng/ml	ng/ml
-----						
System Monitoring Compounds						
1) SA Tetrachlo...	3.477	2.684	40433717	19709553	17.402	18.125
28) SA Decachlor...	9.027	7.864	24713903	19234144	15.189	15.427
Target Compounds						
17) MA 4,4'-DDT	6.984	5.969	1040460	803082	0.555	0.692
-----						

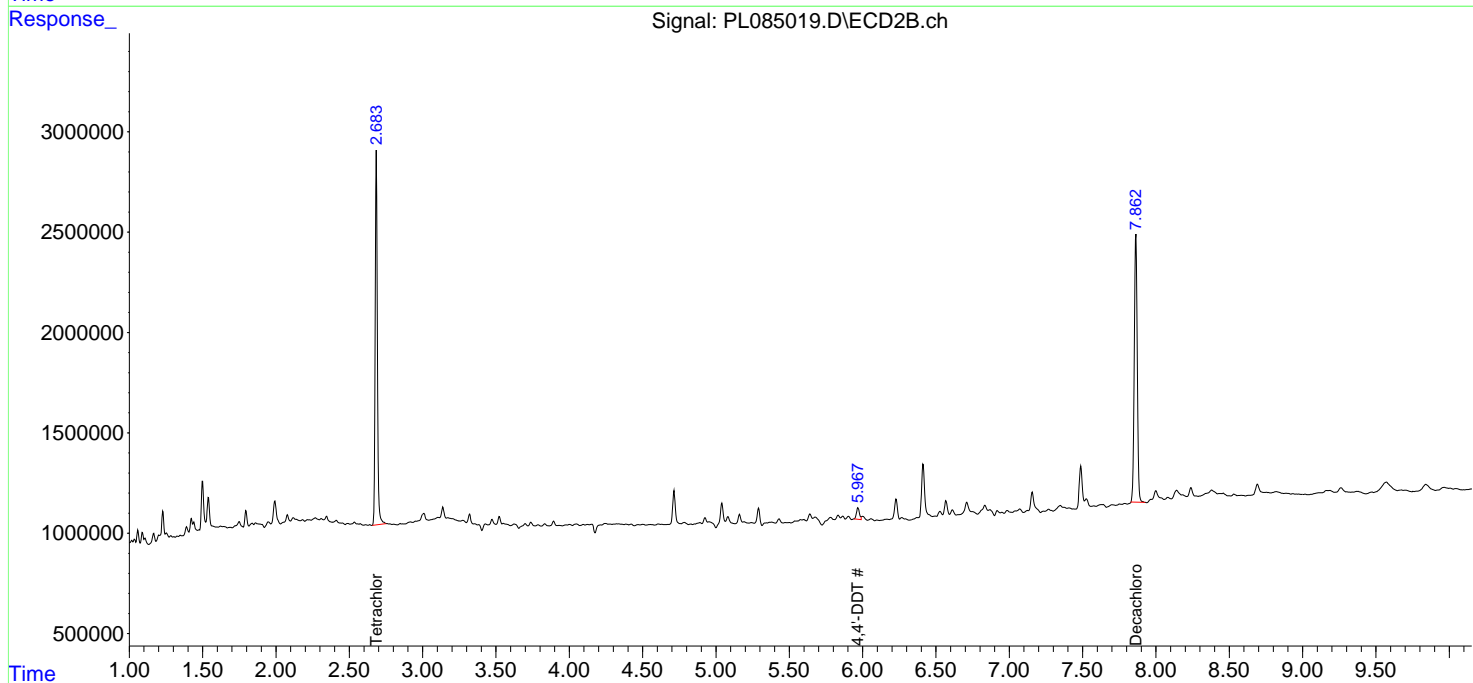
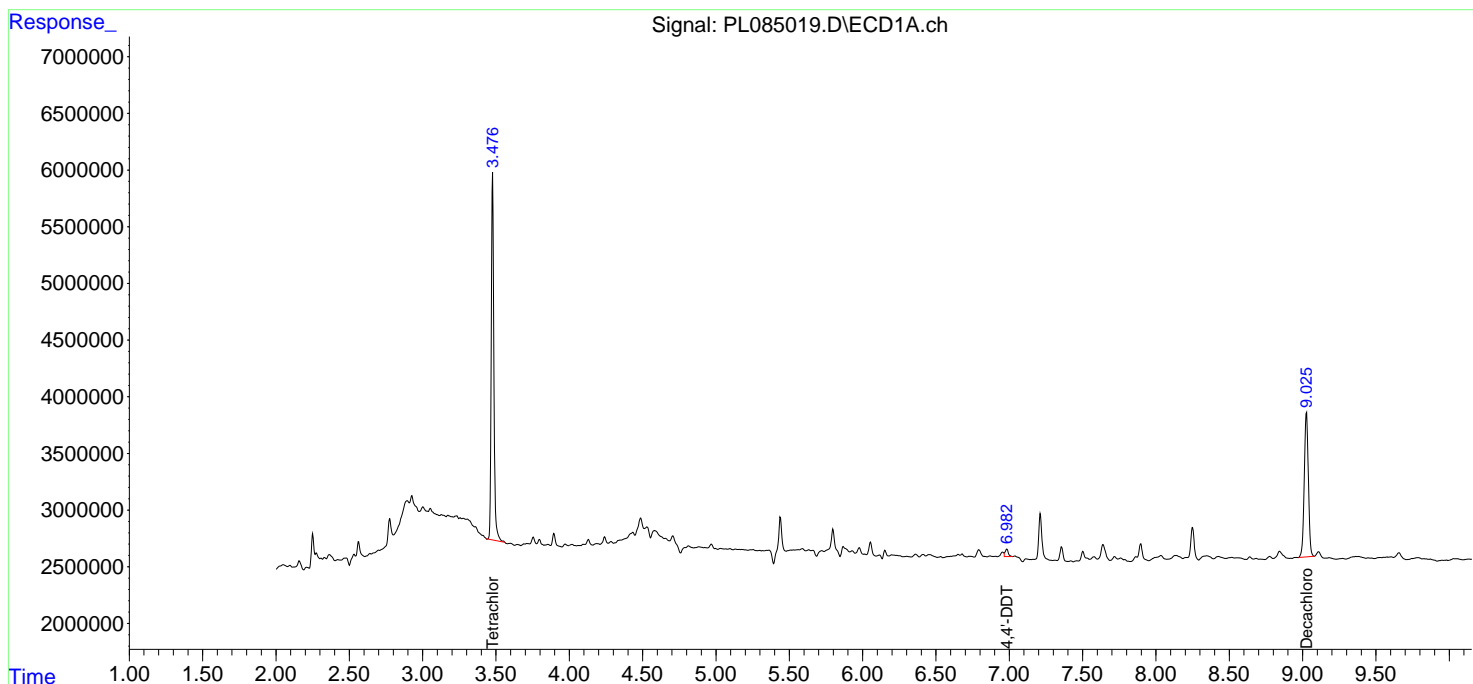
(f)=RT Delta > 1/2 Window (#)=Amounts differ by > 25% (m)=manual int.

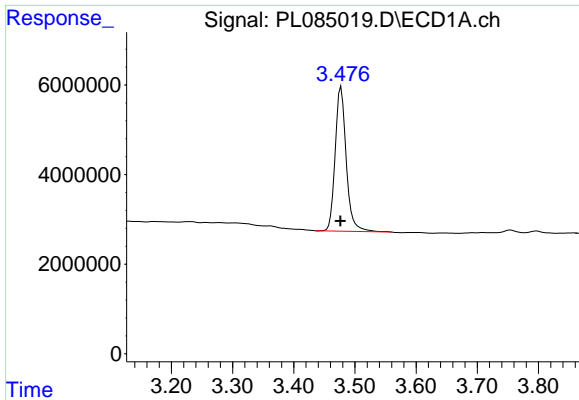
Data Path : Z:\pestpcbsrv\HPCHEM1\ECD\_L\Data\PL082823\  
 Data File : PL085019.D  
 Signal(s) : Signal #1: ECD1A.ch Signal #2: ECD2B.ch  
 Acq On : 28 Aug 2023 13:15  
 Operator : AR\AJ  
 Sample : 04188-07  
 Misc :  
 ALS Vial : 18 Sample Multiplier: 1

Instrument :  
 ECD\_L  
 ClientSampleId :  
 WC-5

Integration File signal 1: autoint1.e  
 Integration File signal 2: autoint2.e  
 Quant Time: Aug 28 22:07:36 2023  
 Quant Method : Z:\pestpcbsrv\HPCHEM1\ECD\_L\methods\PL080323.M  
 Quant Title : GC Extractables  
 QLast Update : Thu Aug 03 16:21:43 2023  
 Response via : Initial Calibration  
 Integrator: ChemStation

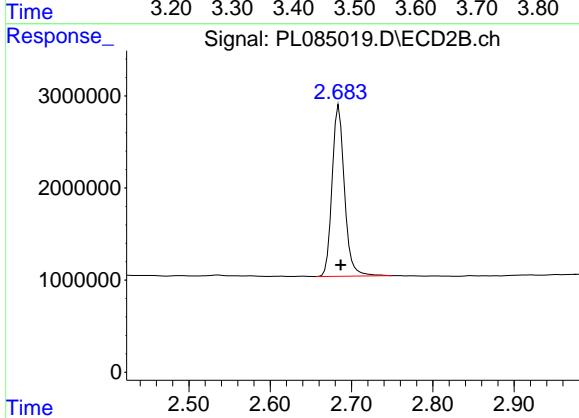
Volume Inj. : 1 µl  
 Signal #1 Phase : ZB-MR2 Signal #2 Phase: ZB-MR1  
 Signal #1 Info : 30M x 0.32mm x0.2 Signal #2 Info : 30M x 0.32mm x0.5µm



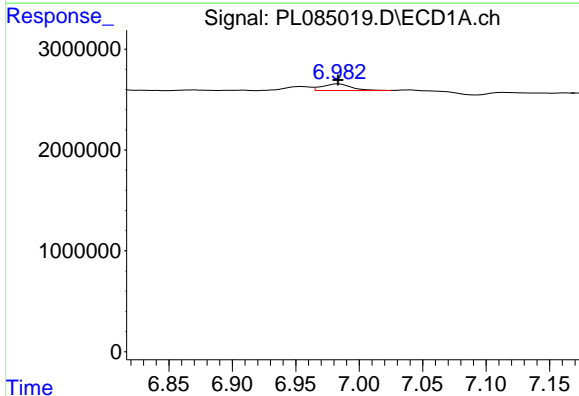


#1 Tetrachloro-m-xylene  
 R.T.: 3.477 min  
 Delta R.T.: 0.001 min  
 Response: 40433717  
 Conc: 17.40 ng/ml

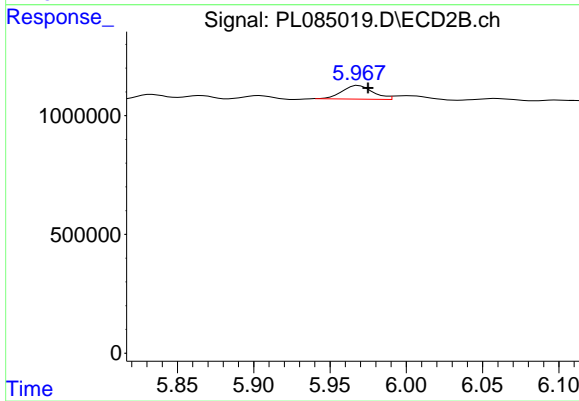
Instrument :  
 ECD\_L  
 ClientSampleId :  
 WC-5



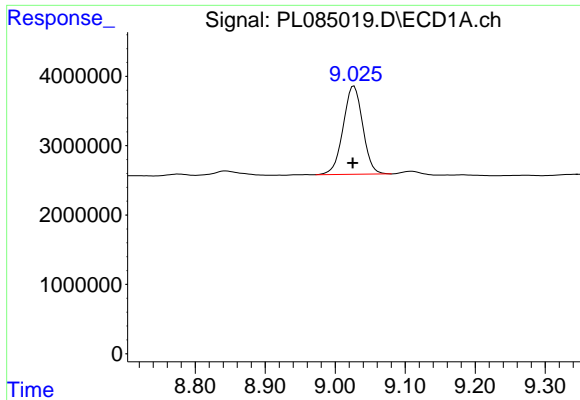
#1 Tetrachloro-m-xylene  
 R.T.: 2.684 min  
 Delta R.T.: -0.002 min  
 Response: 19709553  
 Conc: 18.13 ng/ml



#17 4,4'-DDT  
 R.T.: 6.984 min  
 Delta R.T.: 0.000 min  
 Response: 1040460  
 Conc: 0.56 ng/ml



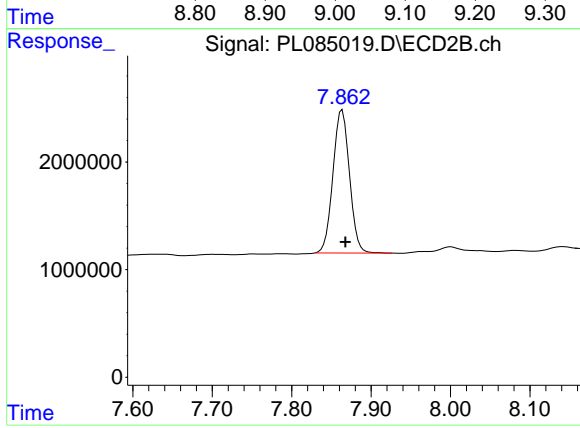
#17 4,4'-DDT  
 R.T.: 5.969 min  
 Delta R.T.: -0.006 min  
 Response: 803082  
 Conc: 0.69 ng/ml



#28 Decachlorobiphenyl

R.T.: 9.027 min  
Delta R.T.: 0.002 min  
Response: 24713903  
Conc: 15.19 ng/ml

Instrument :  
ECD\_L  
ClientSampleId :  
WC-5



#28 Decachlorobiphenyl

R.T.: 7.864 min  
Delta R.T.: -0.004 min  
Response: 19234144  
Conc: 15.43 ng/ml