

Data Path : Z:\pestpcbsrv\HPCHEM1\ECD\_L\Data\PL082823\  
 Data File : PL085023.D  
 Signal(s) : Signal #1: ECD1A.ch Signal #2: ECD2B.ch  
 Acq On : 28 Aug 2023 14:11  
 Operator : AR\AJ  
 Sample : 04170-02  
 Misc :  
 ALS Vial : 22 Sample Multiplier: 1

Instrument :  
 ECD\_L  
 ClientSampleId :  
 WC-SCAS-01

Integration File signal 1: autoint1.e  
 Integration File signal 2: autoint2.e  
 Quant Time: Aug 28 22:08:37 2023  
 Quant Method : Z:\pestpcbsrv\HPCHEM1\ECD\_L\methods\PL080323.M  
 Quant Title : GC Extractables  
 QLast Update : Thu Aug 03 16:21:43 2023  
 Response via : Initial Calibration  
 Integrator: ChemStation

Volume Inj. : 1 µl  
 Signal #1 Phase : ZB-MR2 Signal #2 Phase: ZB-MR1  
 Signal #1 Info : 30M x 0.32mm x0.2 Signal #2 Info : 30M x 0.32mm x0.5µm

Compound	RT#1	RT#2	Resp#1	Resp#2	ng/ml	ng/ml
-----						
System Monitoring Compounds						
1) SA Tetrachlo...	3.477	2.684	40439612	19607958	17.405	18.032
28) SA Decachlor...	9.026	7.864	29348394	23141452	18.037	18.561

Target Compounds

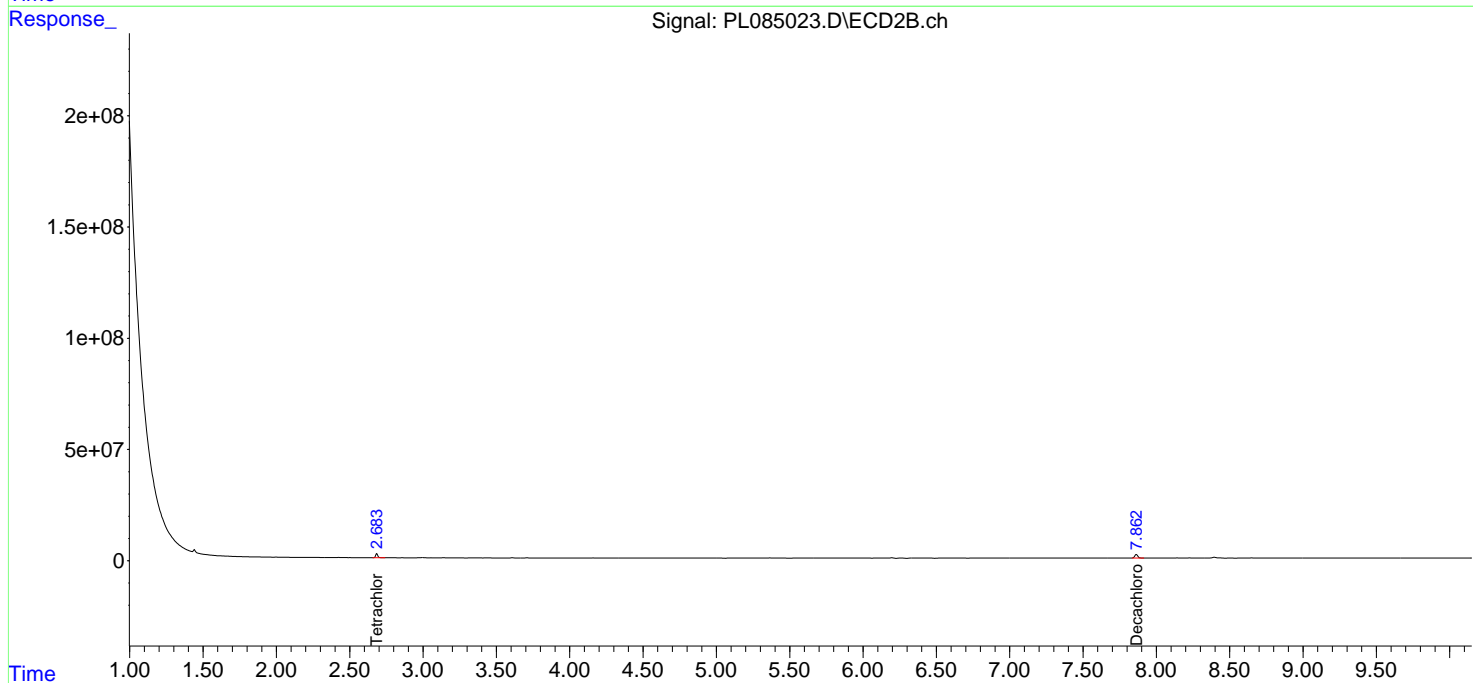
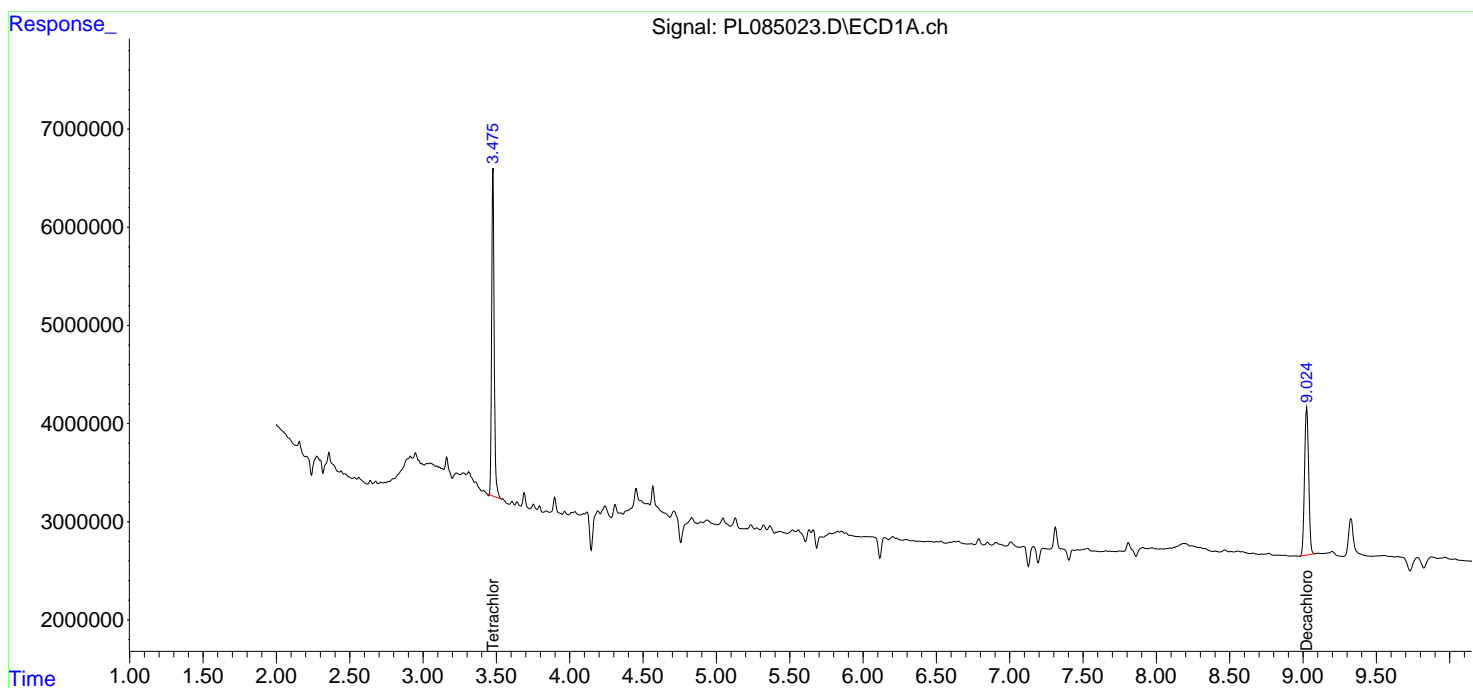
-----  
 (f)=RT Delta > 1/2 Window (#)=Amounts differ by > 25% (m)=manual int.

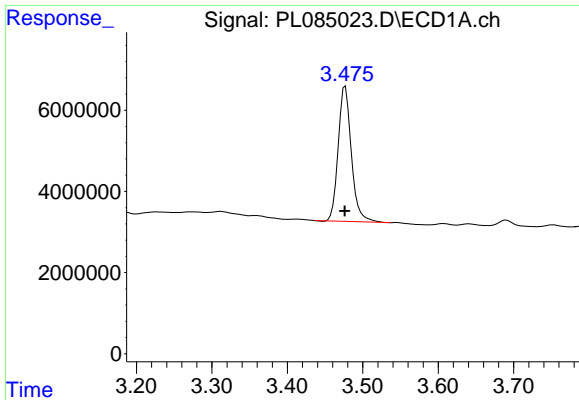
Data Path : Z:\pestpcbsrv\HPCHEM1\ECD\_L\Data\PL082823\  
 Data File : PL085023.D  
 Signal(s) : Signal #1: ECD1A.ch Signal #2: ECD2B.ch  
 Acq On : 28 Aug 2023 14:11  
 Operator : AR\AJ  
 Sample : 04170-02  
 Misc :  
 ALS Vial : 22 Sample Multiplier: 1

Instrument :  
 ECD\_L  
 ClientSampleId :  
 WC-SCAS-01

Integration File signal 1: autoint1.e  
 Integration File signal 2: autoint2.e  
 Quant Time: Aug 28 22:08:37 2023  
 Quant Method : Z:\pestpcbsrv\HPCHEM1\ECD\_L\methods\PL080323.M  
 Quant Title : GC Extractables  
 QLast Update : Thu Aug 03 16:21:43 2023  
 Response via : Initial Calibration  
 Integrator: ChemStation

Volume Inj. : 1 µl  
 Signal #1 Phase : ZB-MR2 Signal #2 Phase: ZB-MR1  
 Signal #1 Info : 30M x 0.32mm x0.2 Signal #2 Info : 30M x 0.32mm x0.5µm

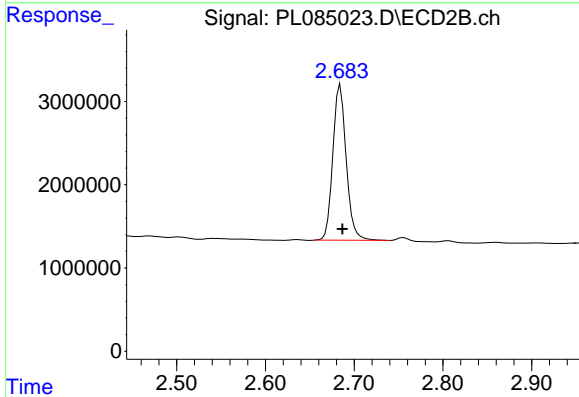




#1 Tetrachloro-m-xylene

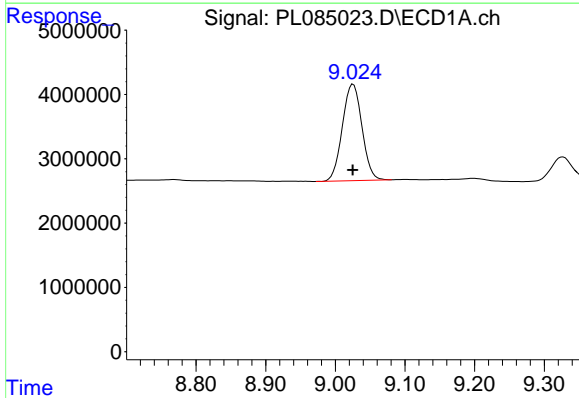
R.T.: 3.477 min  
 Delta R.T.: 0.000 min  
 Response: 40439612  
 Conc: 17.40 ng/ml

Instrument :  
 ECD\_L  
 ClientSampleId :  
 WC-SCAS-01



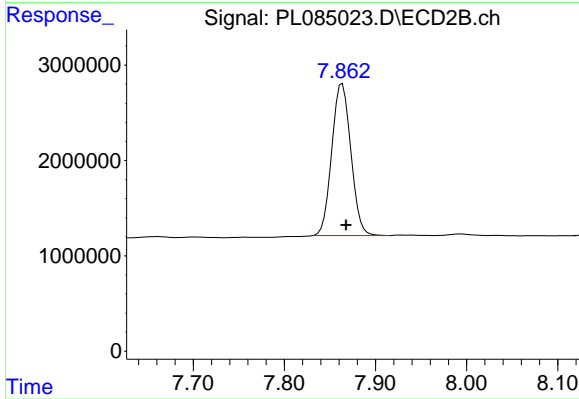
#1 Tetrachloro-m-xylene

R.T.: 2.684 min  
 Delta R.T.: -0.002 min  
 Response: 19607958  
 Conc: 18.03 ng/ml



#28 Decachlorobiphenyl

R.T.: 9.026 min  
 Delta R.T.: 0.000 min  
 Response: 29348394  
 Conc: 18.04 ng/ml



#28 Decachlorobiphenyl

R.T.: 7.864 min  
 Delta R.T.: -0.004 min  
 Response: 23141452  
 Conc: 18.56 ng/ml