

Data Path : Z:\pestpcbsrv\HPCHEM1\ECD_L\Data\PL082823\
 Data File : PL085027.D
 Signal(s) : Signal #1: ECD1A.ch Signal #2: ECD2B.ch
 Acq On : 28 Aug 2023 15:07
 Operator : AR\AJ
 Sample : PSTDCCC050
 Misc :
 ALS Vial : 4 Sample Multiplier: 1

Instrument :
 ECD_L
 ClientSampleId :
 PSTDCCC050

Integration File signal 1: autoint1.e
 Integration File signal 2: autoint2.e
 Quant Time: Aug 28 22:09:39 2023
 Quant Method : Z:\pestpcbsrv\HPCHEM1\ECD_L\methods\PL080323.M
 Quant Title : GC Extractables
 QLast Update : Thu Aug 03 16:21:43 2023
 Response via : Initial Calibration
 Integrator: ChemStation

Volume Inj. : 1 µl
 Signal #1 Phase : ZB-MR2 Signal #2 Phase: ZB-MR1
 Signal #1 Info : 30M x 0.32mm x0.2 Signal #2 Info : 30M x 0.32mm x0.5µm

Compound	RT#1	RT#2	Resp#1	Resp#2	ng/ml	ng/ml
System Monitoring Compounds						
1) SA Tetrachlo...	3.477	2.685	119.0E6	58708890	51.232	53.990
28) SA Decachlor...	9.025	7.864	76839985	62465168	47.225	50.100
Target Compounds						
2) A alpha-BHC	3.935	3.189	171.1E6	86474203	51.824	56.004
3) MA gamma-BHC...	4.269	3.520	162.8E6	83763079	51.029	55.124
4) MA Heptachlor	4.861	3.861	154.7E6	77672726	46.005	54.540
5) MB Aldrin	5.204	4.140	145.7E6	80069656	44.086	55.091
6) B beta-BHC	4.468	3.822	69001343	35820366	49.395	53.462
7) B delta-BHC	4.715	4.050	155.3E6	84130949	48.155	55.414
8) B Heptachlo...	5.633	4.647	129.8E6	71576588	43.070	53.947 #
9) A Endosulfan I	6.019	5.016	111.9E6	66402703	42.518	53.581 #
10) B gamma-Chl...	5.890	4.899	121.0E6	73468941	42.267	54.170 #
11) B alpha-Chl...	5.970	4.964	119.8E6	73351141	42.450	53.836 #
12) B 4,4'-DDE	6.149	5.162	103.2E6	67882338	44.976	55.123
13) MA Dieldrin	6.296	5.283	115.7E6	74321346	43.767	54.737 #
14) MA Endrin	6.526	5.559	96215029	66069381	44.115	54.013
15) B Endosulfa...	6.746	5.857	94969012	63826930	44.902	52.899
16) A 4,4'-DDD	6.668	5.719	82177577	57909878	49.015	56.047
17) MA 4,4'-DDT	6.984	5.971	84487901	60910222	45.091	52.484
18) B Endrin al...	6.878	6.038	75151662	51523068	44.549	51.952
19) B Endosulfa...	7.113	6.263	90359631	62629415	45.232	52.666
20) A Methoxychlor	7.466	6.555	45455042	34049055	47.364	49.627
21) B Endrin ke...	7.597	6.768	95702662	76251620	47.841	52.849
22) Mirex	8.073	6.947	75523742	58097654	45.474	50.376

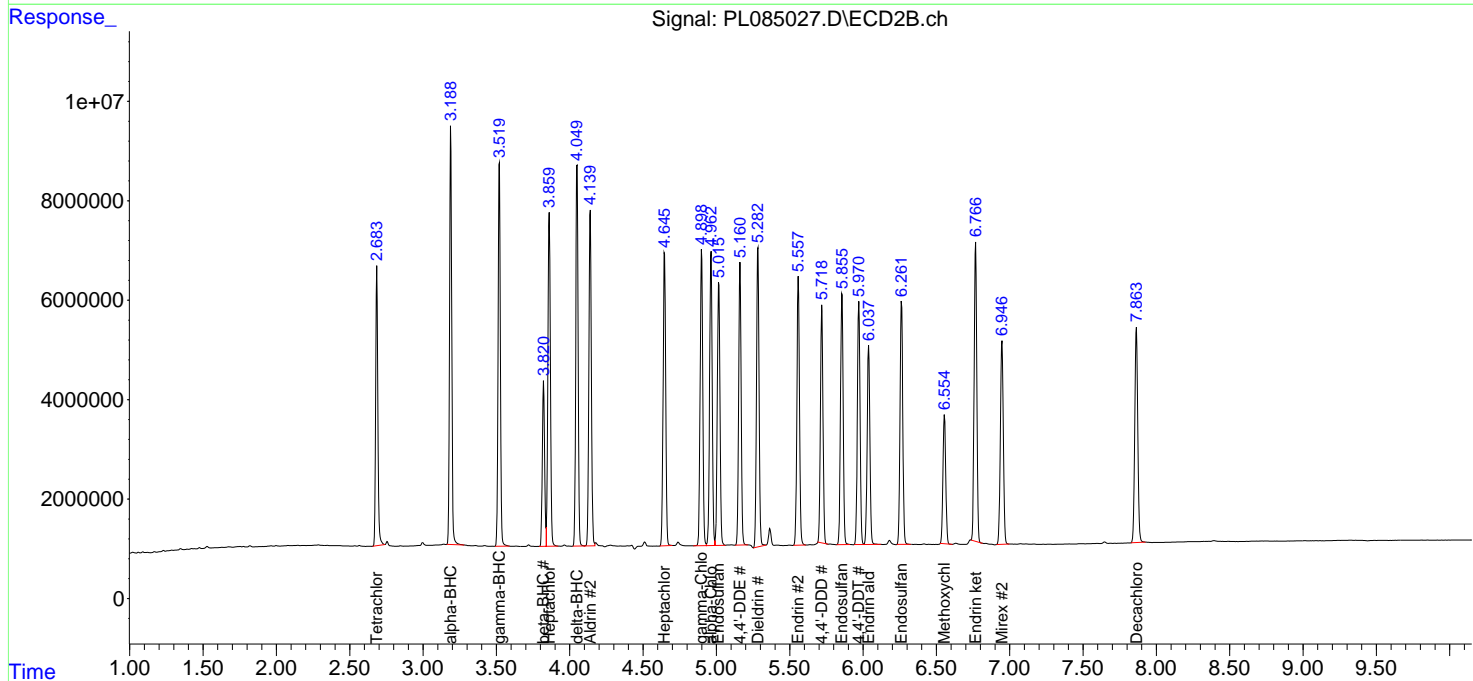
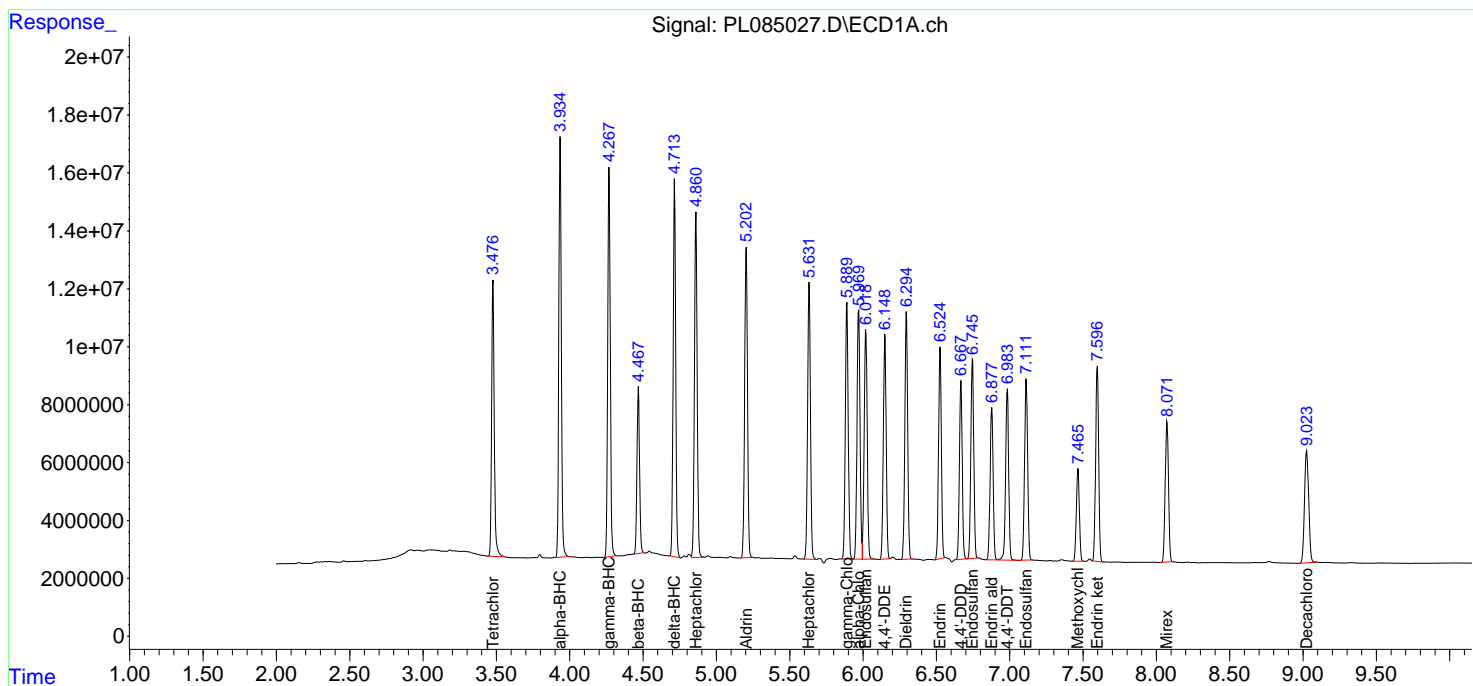
(f)=RT Delta > 1/2 Window (#)=Amounts differ by > 25% (m)=manual int.

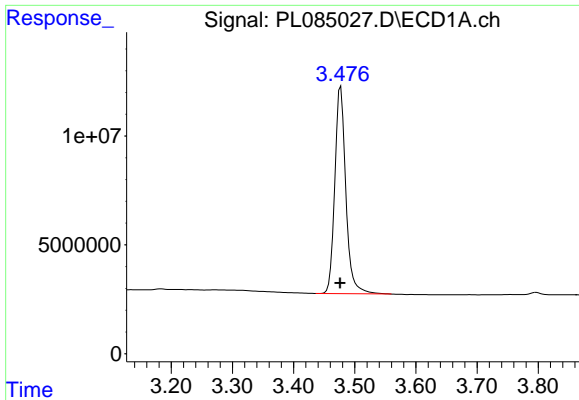
Data Path : Z:\pestpcbsrv\HPCHEM1\ECD_L\Data\PL082823\
 Data File : PL085027.D
 Signal(s) : Signal #1: ECD1A.ch Signal #2: ECD2B.ch
 Acq On : 28 Aug 2023 15:07
 Operator : AR\AJ
 Sample : PSTDCCC050
 Misc :
 ALS Vial : 4 Sample Multiplier: 1

Instrument :
 ECD_L
 ClientSampleId :
 PSTDCCC050

Integration File signal 1: autoint1.e
 Integration File signal 2: autoint2.e
 Quant Time: Aug 28 22:09:39 2023
 Quant Method : Z:\pestpcbsrv\HPCHEM1\ECD_L\methods\PL080323.M
 Quant Title : GC Extractables
 QLast Update : Thu Aug 03 16:21:43 2023
 Response via : Initial Calibration
 Integrator: ChemStation

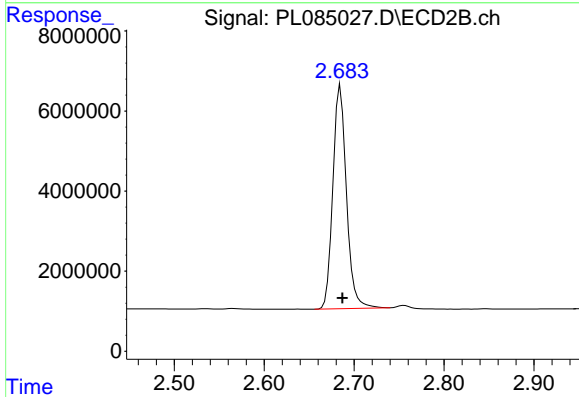
Volume Inj. : 1 µl
 Signal #1 Phase : ZB-MR2 Signal #2 Phase: ZB-MR1
 Signal #1 Info : 30M x 0.32mm x0.2 Signal #2 Info : 30M x 0.32mm x0.5µm



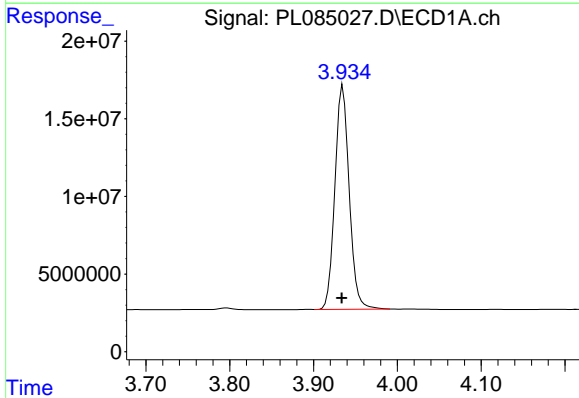


#1 Tetrachloro-m-xylene
 R.T.: 3.477 min
 Delta R.T.: 0.001 min
 Response: 119036488
 Conc: 51.23 ng/ml

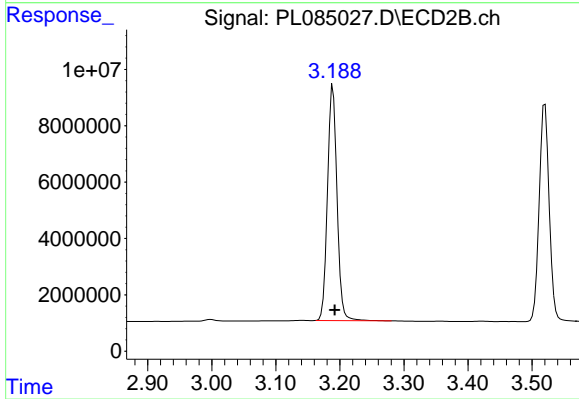
Instrument :
 ECD_L
 ClientSampleId :
 PSTDCCC050



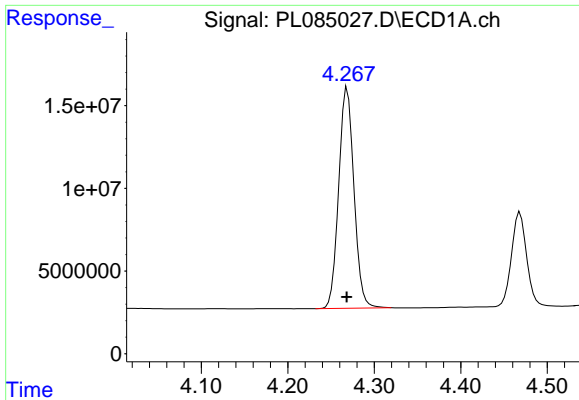
#1 Tetrachloro-m-xylene
 R.T.: 2.685 min
 Delta R.T.: -0.002 min
 Response: 58708890
 Conc: 53.99 ng/ml



#2 alpha-BHC
 R.T.: 3.935 min
 Delta R.T.: 0.001 min
 Response: 171092738
 Conc: 51.82 ng/ml

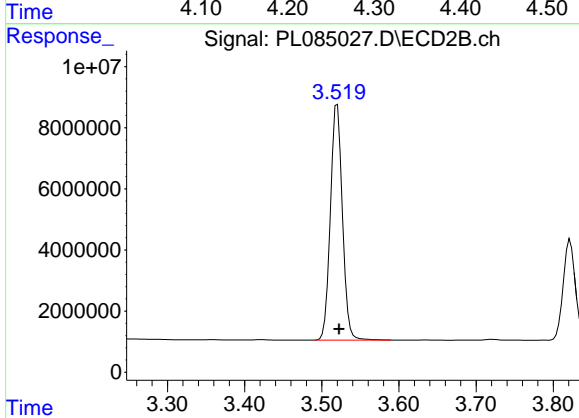


#2 alpha-BHC
 R.T.: 3.189 min
 Delta R.T.: -0.003 min
 Response: 86474203
 Conc: 56.00 ng/ml

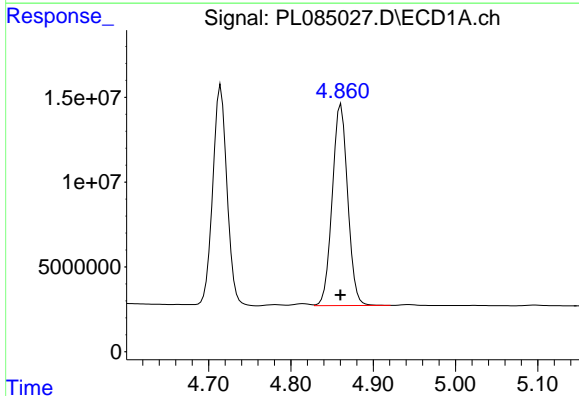


#3 gamma-BHC (Lindane)
 R.T.: 4.269 min
 Delta R.T.: 0.000 min
 Response: 162783157
 Conc: 51.03 ng/ml

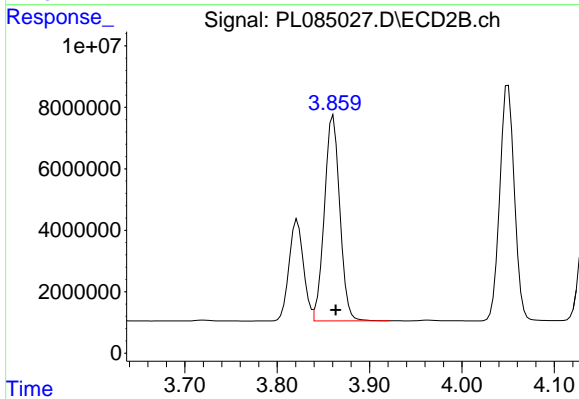
Instrument :
 ECD_L
 ClientSampleId :
 PSTDCCC050



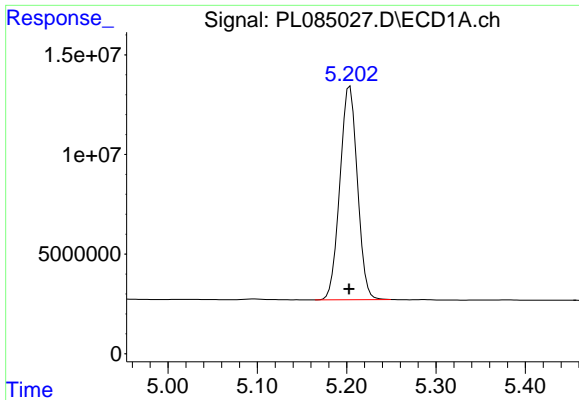
#3 gamma-BHC (Lindane)
 R.T.: 3.520 min
 Delta R.T.: -0.002 min
 Response: 83763079
 Conc: 55.12 ng/ml



#4 Heptachlor
 R.T.: 4.861 min
 Delta R.T.: 0.000 min
 Response: 154707686
 Conc: 46.00 ng/ml

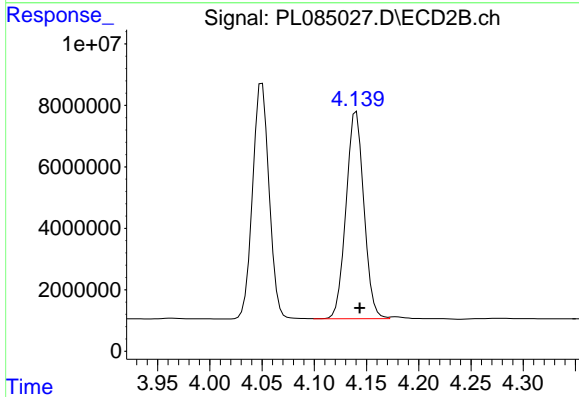


#4 Heptachlor
 R.T.: 3.861 min
 Delta R.T.: -0.003 min
 Response: 77672726
 Conc: 54.54 ng/ml

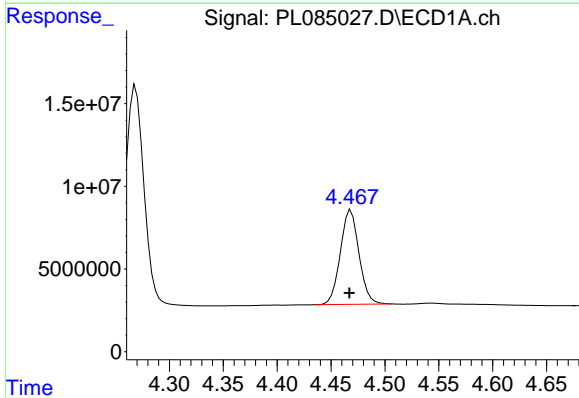


#5 Aldrin
 R.T.: 5.204 min
 Delta R.T.: 0.000 min
 Response: 145719818
 Conc: 44.09 ng/ml

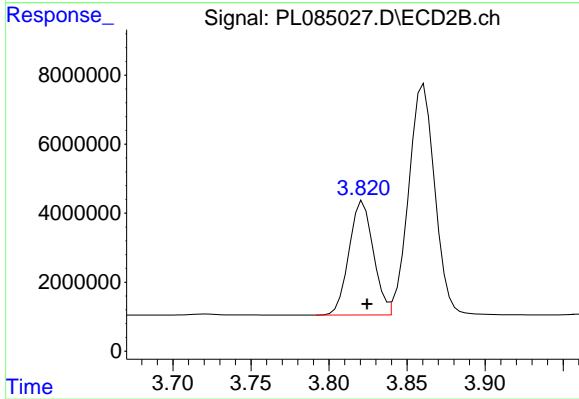
Instrument :
 ECD_L
 ClientSampleId :
 PSTDCCC050



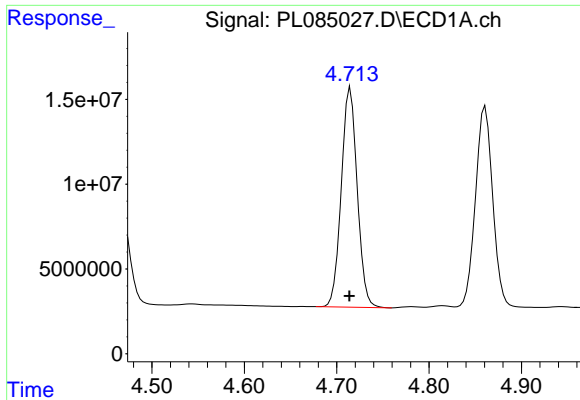
#5 Aldrin
 R.T.: 4.140 min
 Delta R.T.: -0.003 min
 Response: 80069656
 Conc: 55.09 ng/ml



#6 beta-BHC
 R.T.: 4.468 min
 Delta R.T.: 0.002 min
 Response: 69001343
 Conc: 49.40 ng/ml



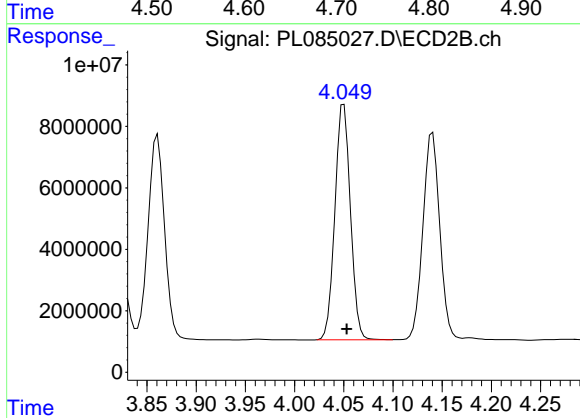
#6 beta-BHC
 R.T.: 3.822 min
 Delta R.T.: -0.002 min
 Response: 35820366
 Conc: 53.46 ng/ml



#7 delta-BHC

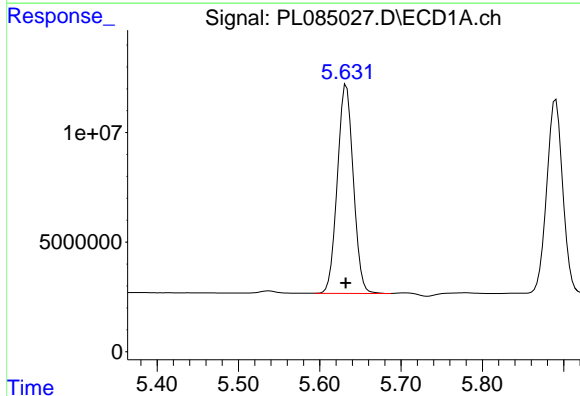
R.T.: 4.715 min
 Delta R.T.: 0.000 min
 Response: 155286670
 Conc: 48.16 ng/ml

Instrument :
 ECD_L
 ClientSampleId :
 PSTDCCC050



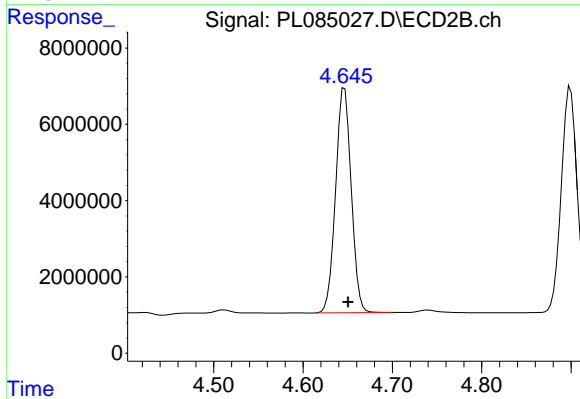
#7 delta-BHC

R.T.: 4.050 min
 Delta R.T.: -0.003 min
 Response: 84130949
 Conc: 55.41 ng/ml



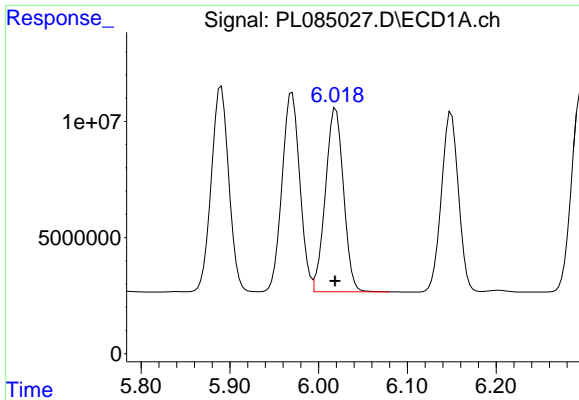
#8 Heptachlor epoxide

R.T.: 5.633 min
 Delta R.T.: 0.000 min
 Response: 129758095
 Conc: 43.07 ng/ml



#8 Heptachlor epoxide

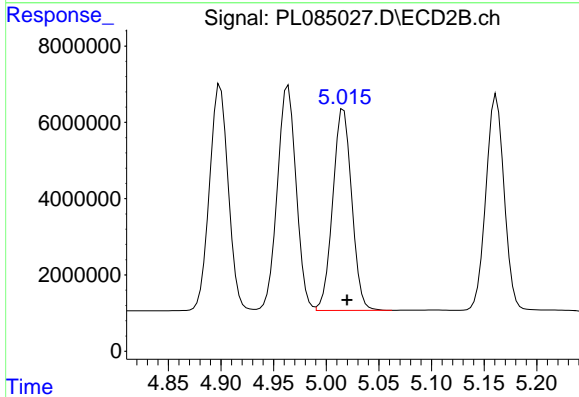
R.T.: 4.647 min
 Delta R.T.: -0.004 min
 Response: 71576588
 Conc: 53.95 ng/ml



#9 Endosulfan I

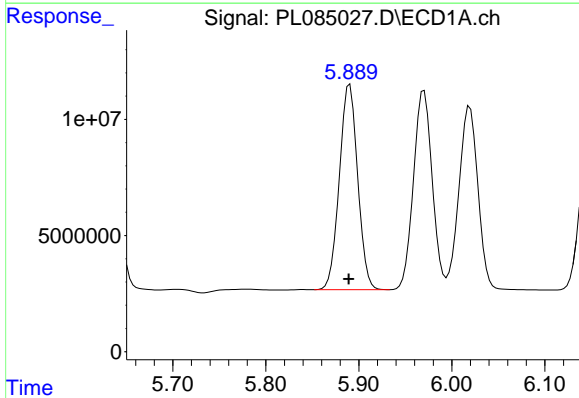
R.T.: 6.019 min
 Delta R.T.: 0.000 min
 Response: 111917076
 Conc: 42.52 ng/ml

Instrument :
 ECD_L
 ClientSampleId :
 PSTDCCC050



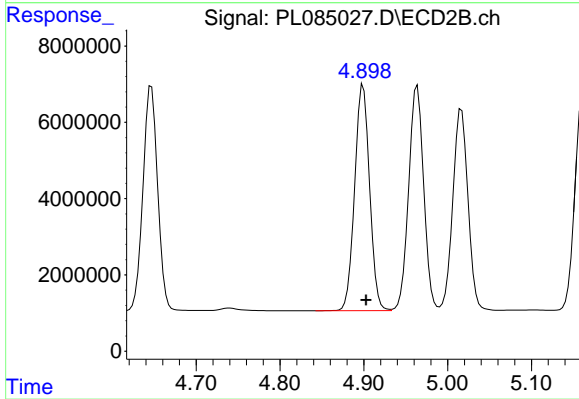
#9 Endosulfan I

R.T.: 5.016 min
 Delta R.T.: -0.003 min
 Response: 66402703
 Conc: 53.58 ng/ml



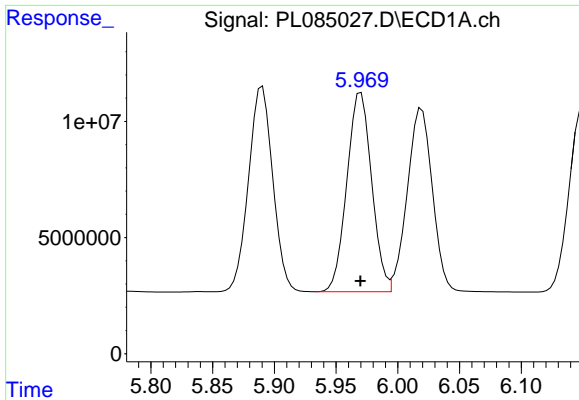
#10 gamma-Chlordane

R.T.: 5.890 min
 Delta R.T.: 0.001 min
 Response: 121037517
 Conc: 42.27 ng/ml



#10 gamma-Chlordane

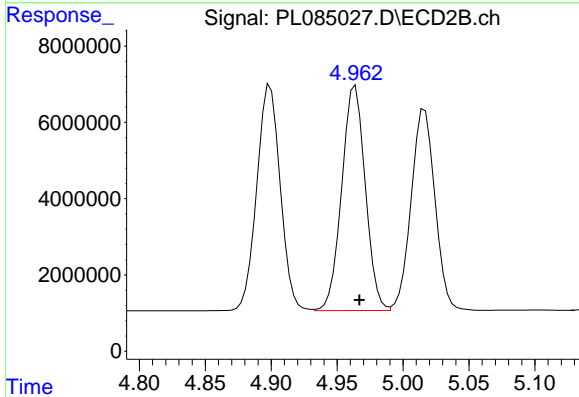
R.T.: 4.899 min
 Delta R.T.: -0.003 min
 Response: 73468941
 Conc: 54.17 ng/ml



#11 alpha-Chlordane

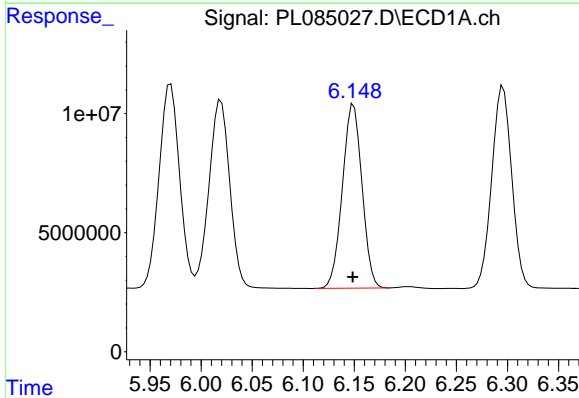
R.T.: 5.970 min
Delta R.T.: 0.000 min
Response: 119844067
Conc: 42.45 ng/ml

Instrument :
ECD_L
ClientSampleId :
PSTDCCC050



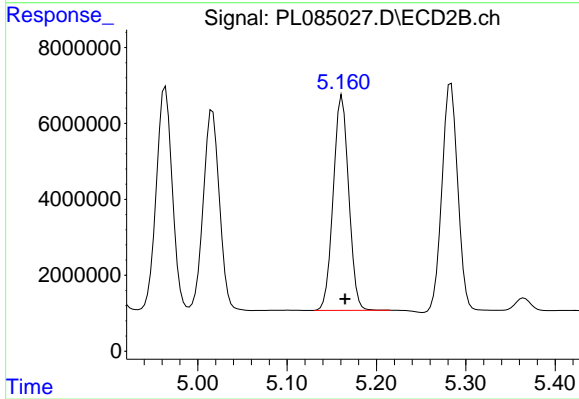
#11 alpha-Chlordane

R.T.: 4.964 min
Delta R.T.: -0.003 min
Response: 73351141
Conc: 53.84 ng/ml



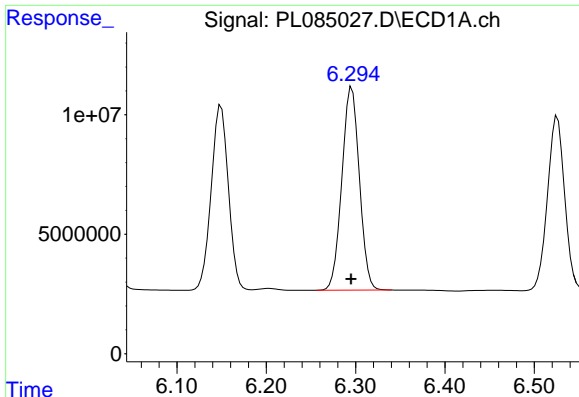
#12 4,4'-DDE

R.T.: 6.149 min
Delta R.T.: 0.001 min
Response: 103231655
Conc: 44.98 ng/ml



#12 4,4'-DDE

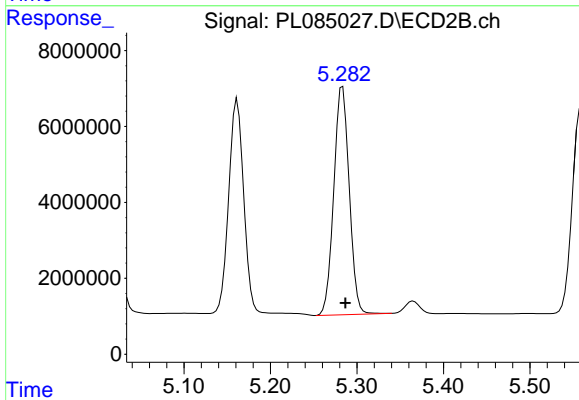
R.T.: 5.162 min
Delta R.T.: -0.003 min
Response: 67882338
Conc: 55.12 ng/ml



#13 Dieldrin

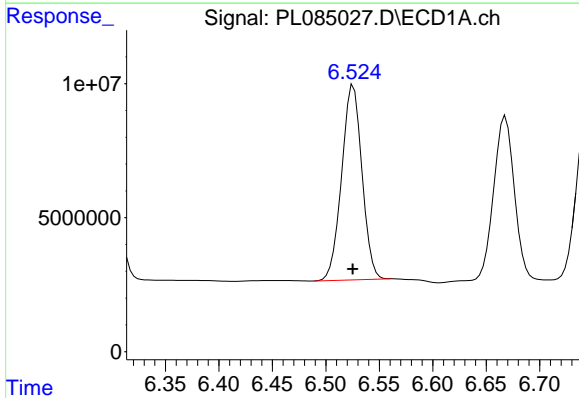
R.T.: 6.296 min
 Delta R.T.: 0.000 min
 Response: 115660357
 Conc: 43.77 ng/ml

Instrument :
 ECD_L
 ClientSampleId :
 PSTDCCC050



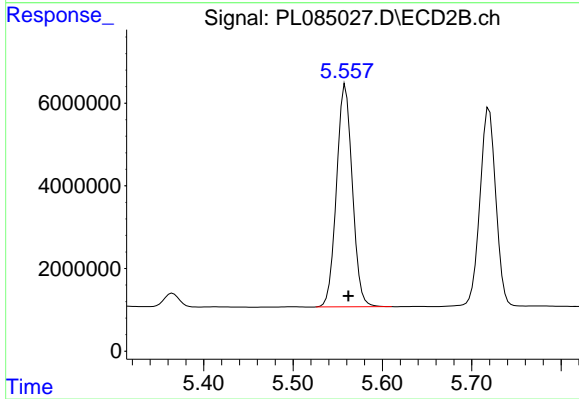
#13 Dieldrin

R.T.: 5.283 min
 Delta R.T.: -0.003 min
 Response: 74321346
 Conc: 54.74 ng/ml



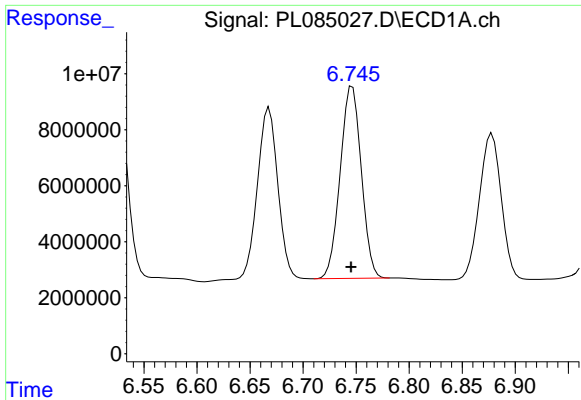
#14 Endrin

R.T.: 6.526 min
 Delta R.T.: 0.000 min
 Response: 96215029
 Conc: 44.12 ng/ml



#14 Endrin

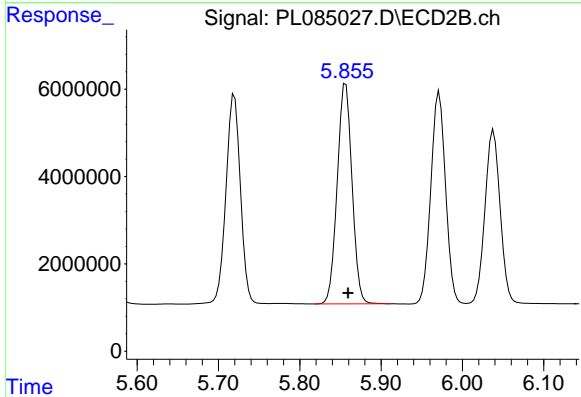
R.T.: 5.559 min
 Delta R.T.: -0.003 min
 Response: 66069381
 Conc: 54.01 ng/ml



#15 Endosulfan II

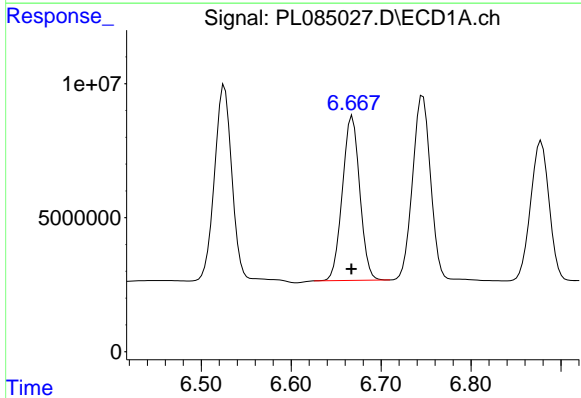
R.T.: 6.746 min
 Delta R.T.: 0.001 min
 Response: 94969012
 Conc: 44.90 ng/ml

Instrument :
 ECD_L
 ClientSampleId :
 PSTDCCC050



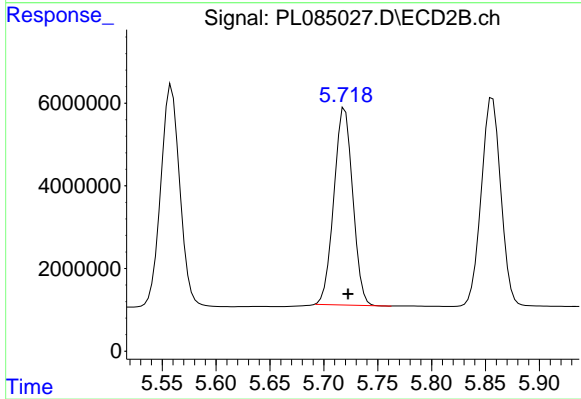
#15 Endosulfan II

R.T.: 5.857 min
 Delta R.T.: -0.003 min
 Response: 63826930
 Conc: 52.90 ng/ml



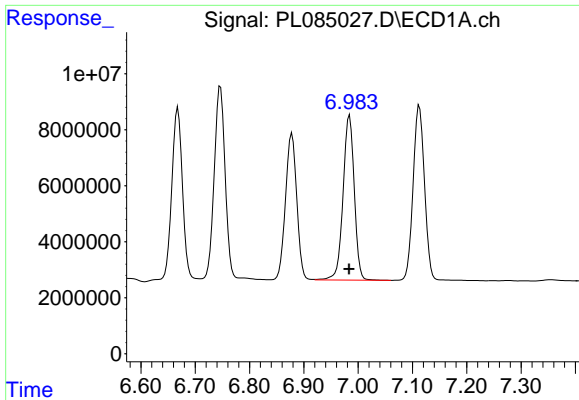
#16 4,4'-DDD

R.T.: 6.668 min
 Delta R.T.: 0.001 min
 Response: 82177577
 Conc: 49.01 ng/ml



#16 4,4'-DDD

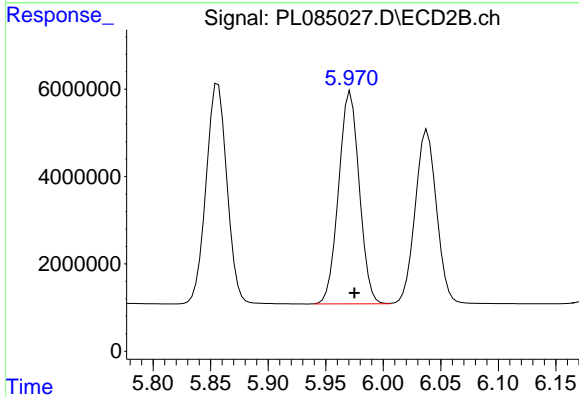
R.T.: 5.719 min
 Delta R.T.: -0.003 min
 Response: 57909878
 Conc: 56.05 ng/ml



#17 4,4'-DDT

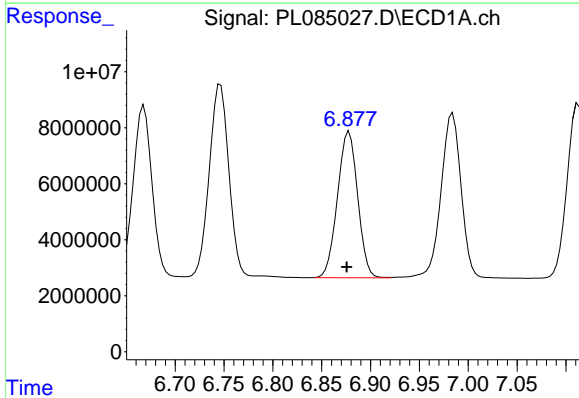
R.T.: 6.984 min
 Delta R.T.: 0.000 min
 Response: 84487901
 Conc: 45.09 ng/ml

Instrument :
 ECD_L
 ClientSampleId :
 PSTDCCC050



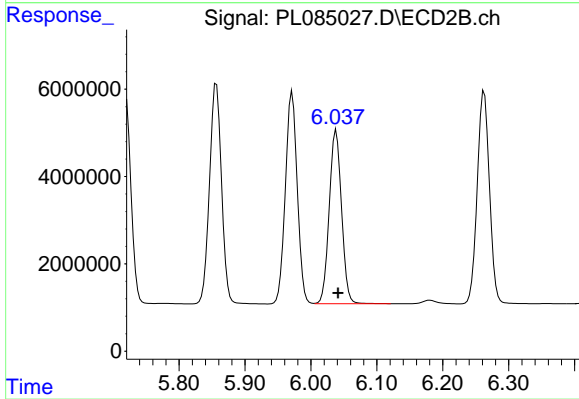
#17 4,4'-DDT

R.T.: 5.971 min
 Delta R.T.: -0.003 min
 Response: 60910222
 Conc: 52.48 ng/ml



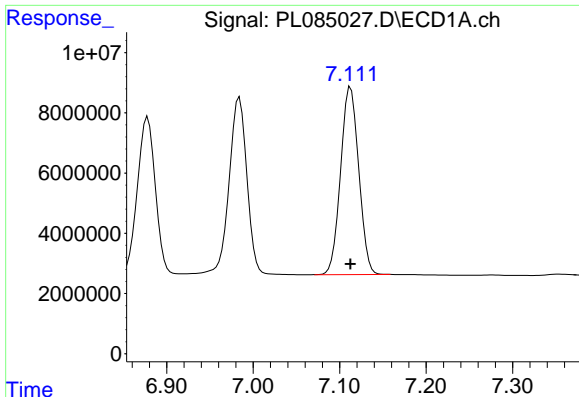
#18 Endrin aldehyde

R.T.: 6.878 min
 Delta R.T.: 0.002 min
 Response: 75151662
 Conc: 44.55 ng/ml



#18 Endrin aldehyde

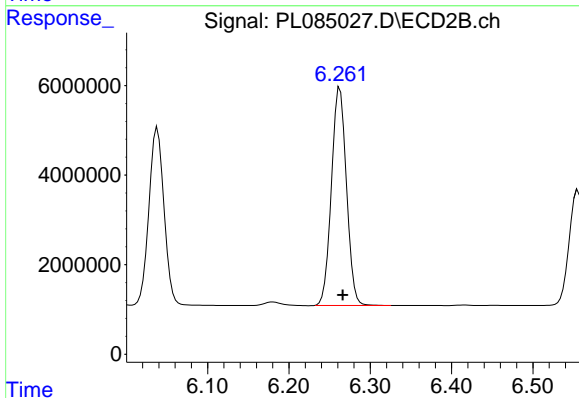
R.T.: 6.038 min
 Delta R.T.: -0.003 min
 Response: 51523068
 Conc: 51.95 ng/ml



#19 Endosulfan Sulfate

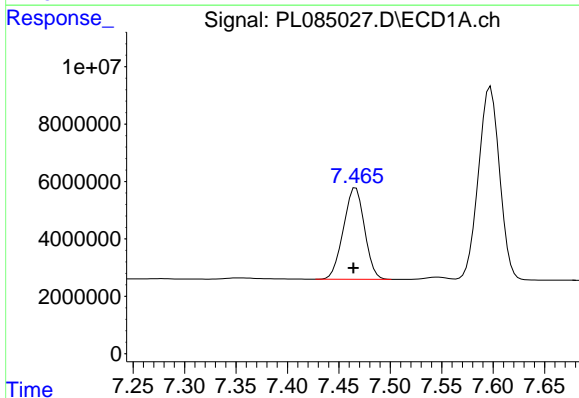
R.T.: 7.113 min
 Delta R.T.: 0.000 min
 Response: 90359631
 Conc: 45.23 ng/ml

Instrument :
 ECD_L
 ClientSampleId :
 PSTDCCC050



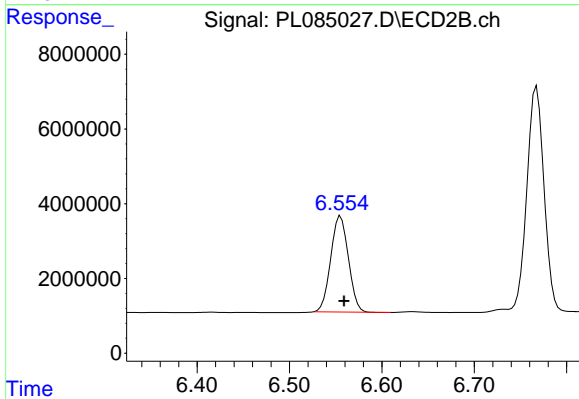
#19 Endosulfan Sulfate

R.T.: 6.263 min
 Delta R.T.: -0.003 min
 Response: 62629415
 Conc: 52.67 ng/ml



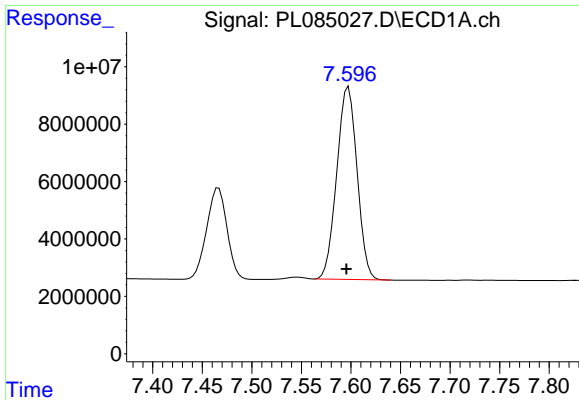
#20 Methoxychlor

R.T.: 7.466 min
 Delta R.T.: 0.002 min
 Response: 45455042
 Conc: 47.36 ng/ml



#20 Methoxychlor

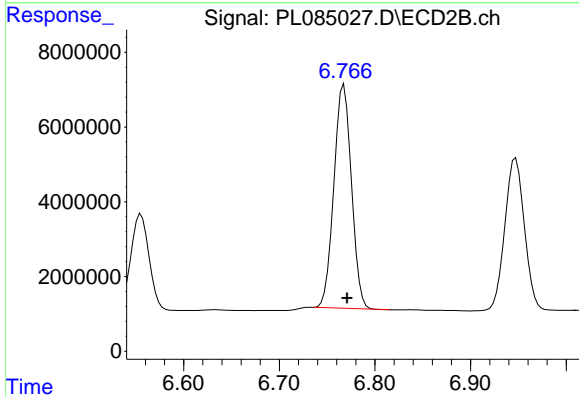
R.T.: 6.555 min
 Delta R.T.: -0.004 min
 Response: 34049055
 Conc: 49.63 ng/ml



#21 Endrin ketone

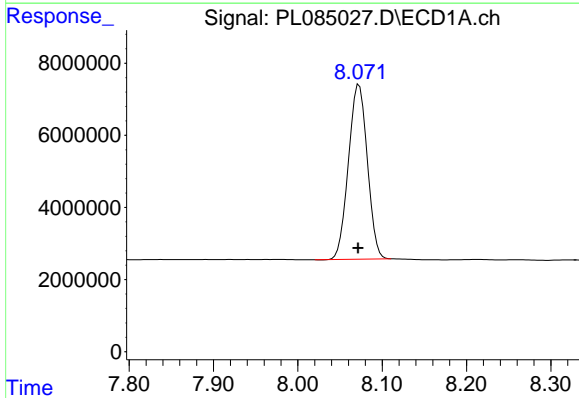
R.T.: 7.597 min
 Delta R.T.: 0.002 min
 Response: 95702662
 Conc: 47.84 ng/ml

Instrument :
 ECD_L
 ClientSampleId :
 PSTDCCC050



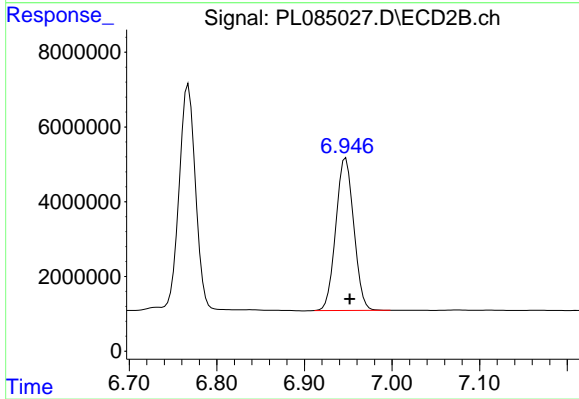
#21 Endrin ketone

R.T.: 6.768 min
 Delta R.T.: -0.003 min
 Response: 76251620
 Conc: 52.85 ng/ml



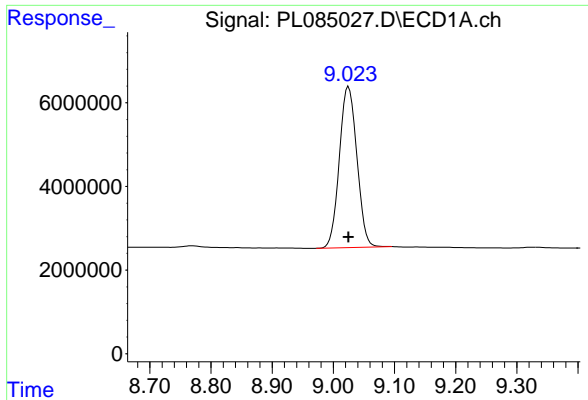
#22 Mirex

R.T.: 8.073 min
 Delta R.T.: 0.001 min
 Response: 75523742
 Conc: 45.47 ng/ml



#22 Mirex

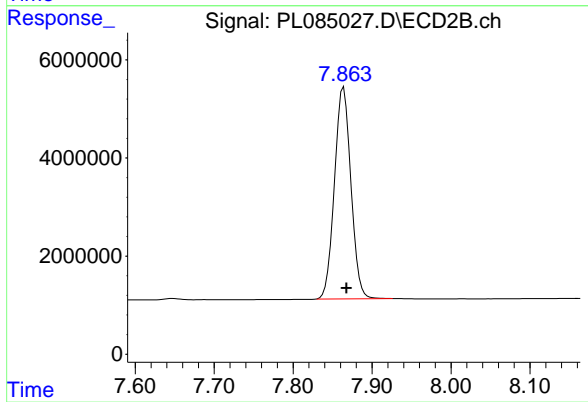
R.T.: 6.947 min
 Delta R.T.: -0.005 min
 Response: 58097654
 Conc: 50.38 ng/ml



#28 Decachlorobiphenyl

R.T.: 9.025 min
Delta R.T.: 0.000 min
Response: 76839985
Conc: 47.23 ng/ml

Instrument :
ECD_L
ClientSampleId :
PSTDCCC050



#28 Decachlorobiphenyl

R.T.: 7.864 min
Delta R.T.: -0.004 min
Response: 62465168
Conc: 50.10 ng/ml