

Data Path : Z:\pestpcbsrv\HPCHEM1\ECD_L\Data\PL082823\
 Data File : PL085028.D
 Signal(s) : Signal #1: ECD1A.ch Signal #2: ECD2B.ch
 Acq On : 28 Aug 2023 15:55
 Operator : AR\AJ
 Sample : PB155133BL
 Misc :
 ALS Vial : 25 Sample Multiplier: 1

Instrument :
 ECD_L
 ClientSampleId :
 PB155133BL

Integration File signal 1: autoint1.e
 Integration File signal 2: autoint2.e
 Quant Time: Aug 28 22:09:54 2023
 Quant Method : Z:\pestpcbsrv\HPCHEM1\ECD_L\methods\PL080323.M
 Quant Title : GC Extractables
 QLast Update : Thu Aug 03 16:21:43 2023
 Response via : Initial Calibration
 Integrator: ChemStation

Volume Inj. : 1 µl
 Signal #1 Phase : ZB-MR2 Signal #2 Phase: ZB-MR1
 Signal #1 Info : 30M x 0.32mm x0.2 Signal #2 Info : 30M x 0.32mm x0.5µm

Compound	RT#1	RT#2	Resp#1	Resp#2	ng/ml	ng/ml

System Monitoring Compounds						
1) SA Tetrachlo...	3.479	2.685	41073070	19710438	17.677	18.126
28) SA Decachlor...	9.029	7.866	31179520	23902660	19.163	19.171

Target Compounds

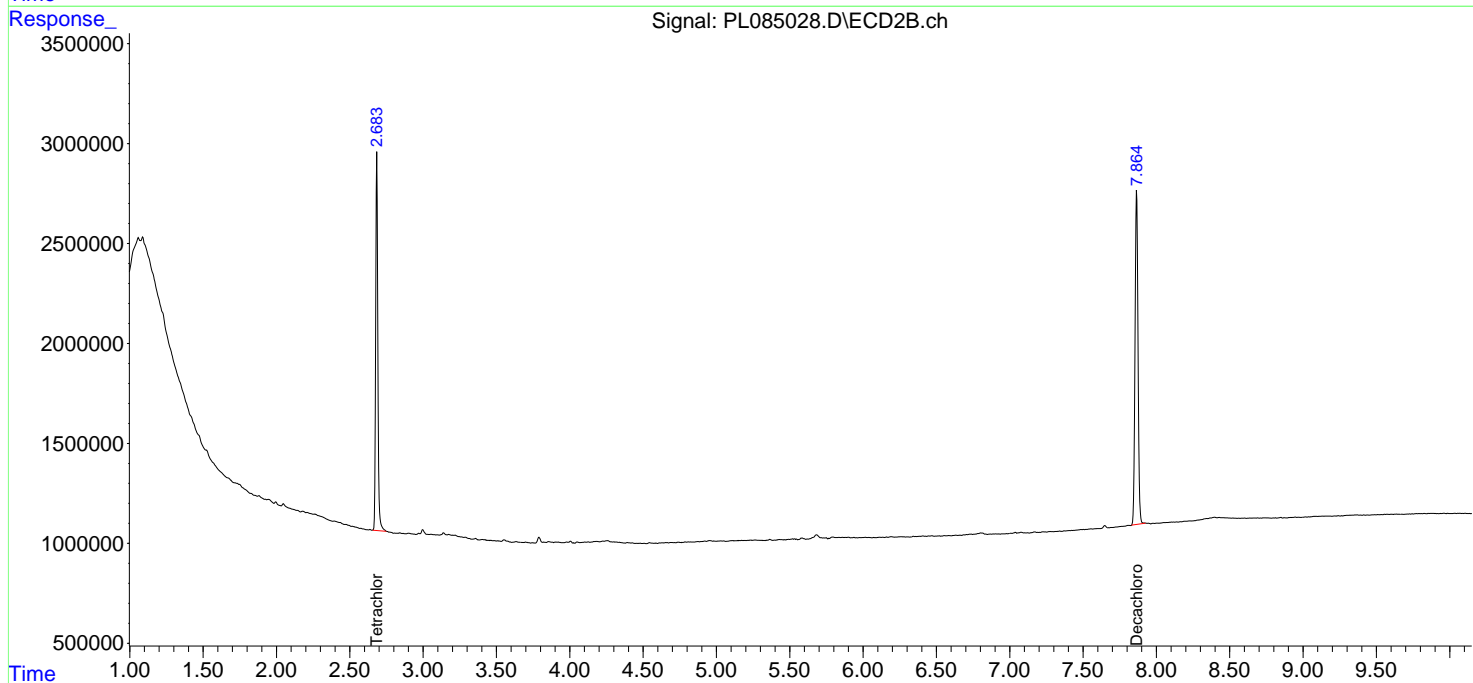
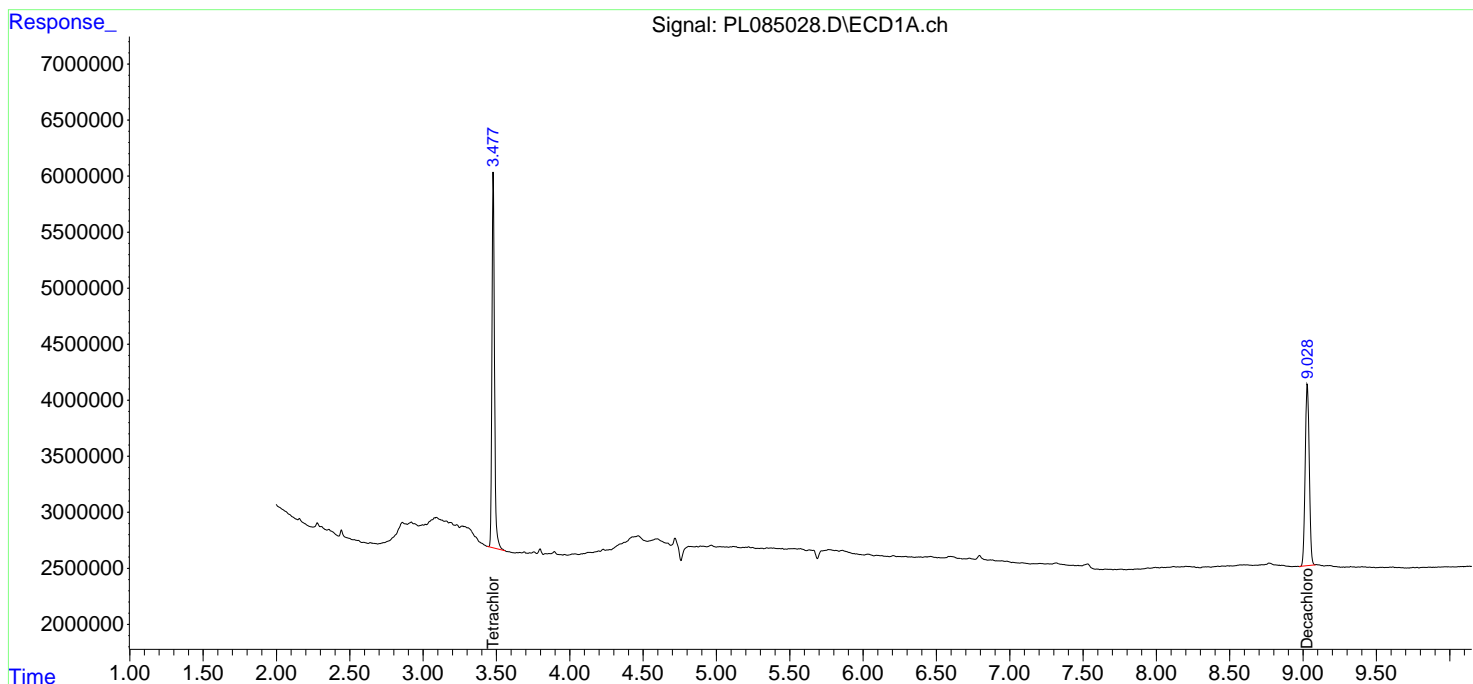
(f)=RT Delta > 1/2 Window (#)=Amounts differ by > 25% (m)=manual int.

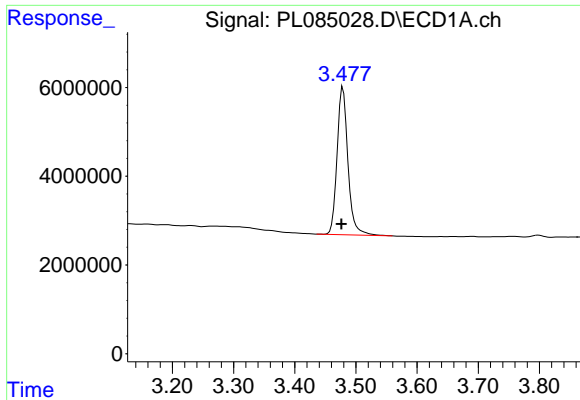
Data Path : Z:\pestpcbsrv\HPCHEM1\ECD_L\Data\PL082823\
 Data File : PL085028.D
 Signal(s) : Signal #1: ECD1A.ch Signal #2: ECD2B.ch
 Acq On : 28 Aug 2023 15:55
 Operator : AR\AJ
 Sample : PB155133BL
 Misc :
 ALS Vial : 25 Sample Multiplier: 1

Instrument :
 ECD_L
 ClientSampleId :
 PB155133BL

Integration File signal 1: autoint1.e
 Integration File signal 2: autoint2.e
 Quant Time: Aug 28 22:09:54 2023
 Quant Method : Z:\pestpcbsrv\HPCHEM1\ECD_L\methods\PL080323.M
 Quant Title : GC Extractables
 QLast Update : Thu Aug 03 16:21:43 2023
 Response via : Initial Calibration
 Integrator: ChemStation

Volume Inj. : 1 µl
 Signal #1 Phase : ZB-MR2 Signal #2 Phase: ZB-MR1
 Signal #1 Info : 30M x 0.32mm x0.2 Signal #2 Info : 30M x 0.32mm x0.5µm

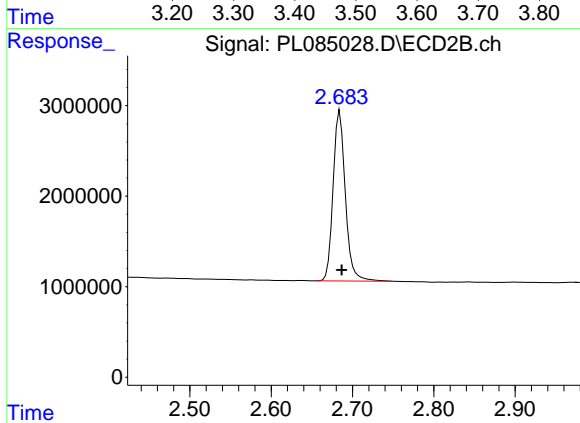




#1 Tetrachloro-m-xylene

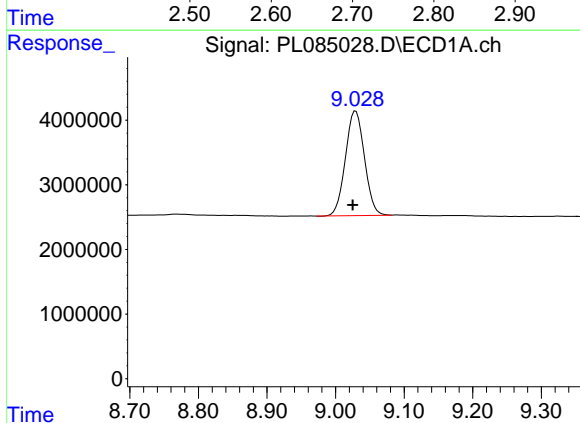
R.T.: 3.479 min
 Delta R.T.: 0.003 min
 Response: 41073070
 Conc: 17.68 ng/ml

Instrument :
 ECD_L
 ClientSampleId :
 PB155133BL



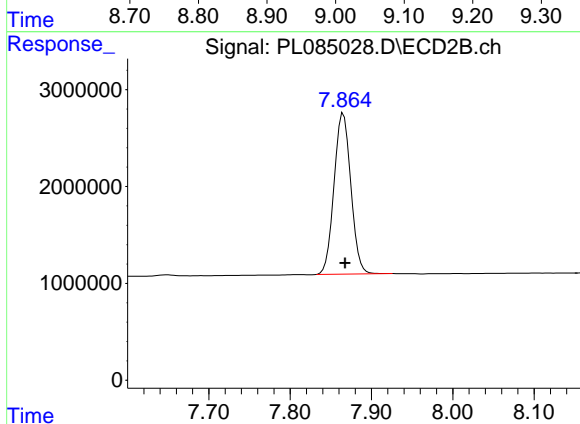
#1 Tetrachloro-m-xylene

R.T.: 2.685 min
 Delta R.T.: -0.002 min
 Response: 19710438
 Conc: 18.13 ng/ml



#28 Decachlorobiphenyl

R.T.: 9.029 min
 Delta R.T.: 0.005 min
 Response: 31179520
 Conc: 19.16 ng/ml



#28 Decachlorobiphenyl

R.T.: 7.866 min
 Delta R.T.: -0.002 min
 Response: 23902660
 Conc: 19.17 ng/ml