

Data Path : Z:\pestpcbsrv\HPCHEM1\ECD_L\Data\PL082823\
 Data File : PL085032.D
 Signal(s) : Signal #1: ECD1A.ch Signal #2: ECD2B.ch
 Acq On : 28 Aug 2023 16:51
 Operator : AR\AJ
 Sample : PSTDCCC050
 Misc :
 ALS Vial : 4 Sample Multiplier: 1

Instrument :
 ECD_L
 ClientSampleId :
 PSTDCCC050

Integration File signal 1: autoint1.e
 Integration File signal 2: autoint2.e
 Quant Time: Aug 28 22:10:54 2023
 Quant Method : Z:\pestpcbsrv\HPCHEM1\ECD_L\methods\PL080323.M
 Quant Title : GC Extractables
 QLast Update : Thu Aug 03 16:21:43 2023
 Response via : Initial Calibration
 Integrator: ChemStation

Volume Inj. : 1 µl
 Signal #1 Phase : ZB-MR2 Signal #2 Phase: ZB-MR1
 Signal #1 Info : 30M x 0.32mm x0.2 Signal #2 Info : 30M x 0.32mm x0.5µm

Compound	RT#1	RT#2	Resp#1	Resp#2	ng/ml	ng/ml

System Monitoring Compounds						
1) SA Tetrachlo...	3.477	2.685	122.1E6	59814851	52.555	55.007
28) SA Decachlor...	9.027	7.864	81299274	63680117	49.966	51.075
Target Compounds						
2) A alpha-BHC	3.935	3.189	174.8E6	87247092	52.956	56.504
3) MA gamma-BHC...	4.269	3.520	172.2E6	84594547	53.968	55.671
4) MA Heptachlor	4.861	3.861	174.6E6	78268328	51.934	54.958
5) MB Aldrin	5.204	4.141	169.5E6	80883248	51.280	55.651
6) B beta-BHC	4.469	3.822	74216214	36172013	53.128	53.986
7) B delta-BHC	4.716	4.050	171.9E6	85166170	53.314	56.096
8) B Heptachlo...	5.634	4.647	149.5E6	72292898	49.634	54.486
9) A Endosulfan I	6.020	5.017	128.7E6	67816752	48.887	54.722
10) B gamma-Chl...	5.891	4.900	141.3E6	74485563	49.352	54.920
11) B alpha-Chl...	5.971	4.964	139.4E6	74579062	49.360	54.737
12) B 4,4'-DDE	6.150	5.162	117.2E6	68851773	51.066	55.910
13) MA Dieldrin	6.297	5.284	129.4E6	75008737	48.972	55.243
14) MA Endrin	6.526	5.559	104.1E6	65702700	47.714	53.713
15) B Endosulfa...	6.747	5.856	104.6E6	65723509	49.434	54.471
16) A 4,4'-DDD	6.669	5.719	89990751	59624432	53.675	57.706
17) MA 4,4'-DDT	6.984	5.972	90956596	61298487	48.544	52.818
18) B Endrin al...	6.878	6.038	80399220	51226036	47.659	51.652
19) B Endosulfa...	7.114	6.263	98095289	64148670	49.104	53.943
20) A Methoxychlor	7.466	6.556	46512995	34322377	48.467	50.025
21) B Endrin ke...	7.598	6.768	101.1E6	79102062	50.531	54.825
22) Mirex	8.073	6.948	79593642	60193014	47.924	52.193

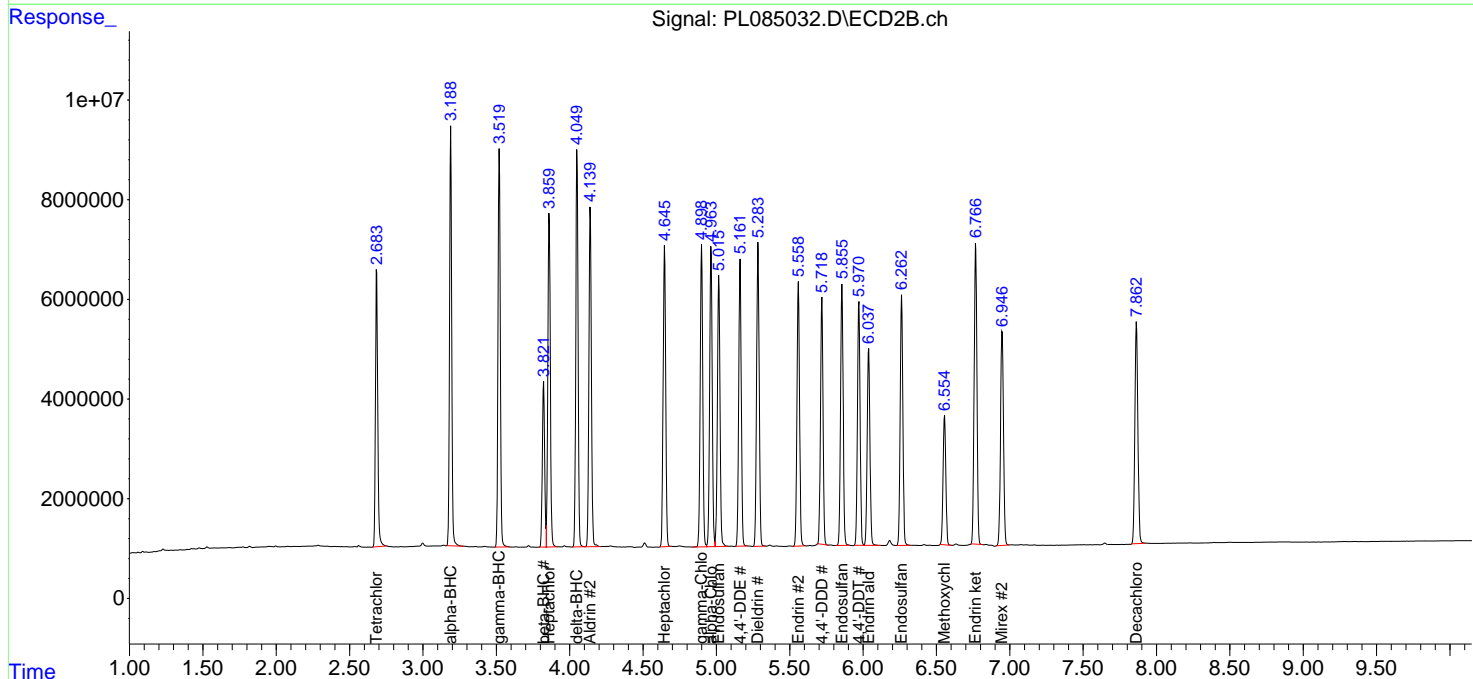
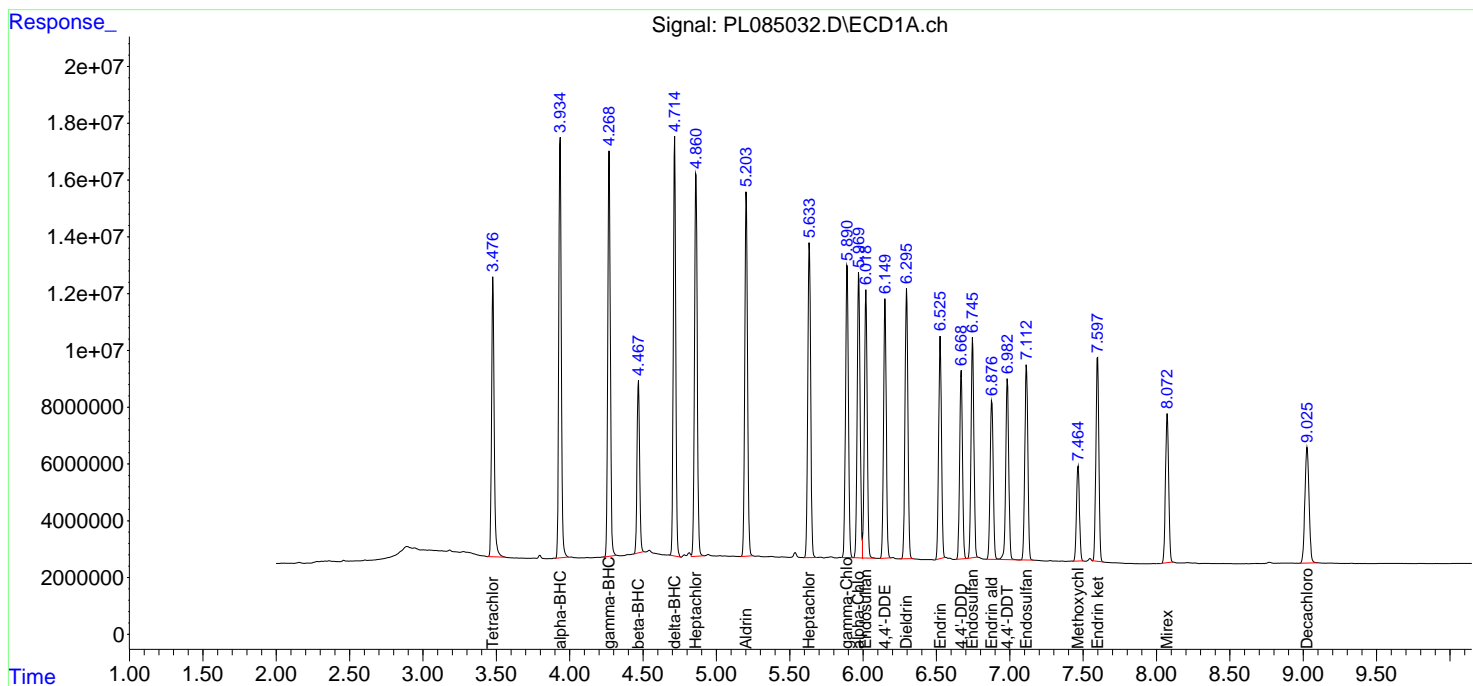
(f)=RT Delta > 1/2 Window (#)=Amounts differ by > 25% (m)=manual int.

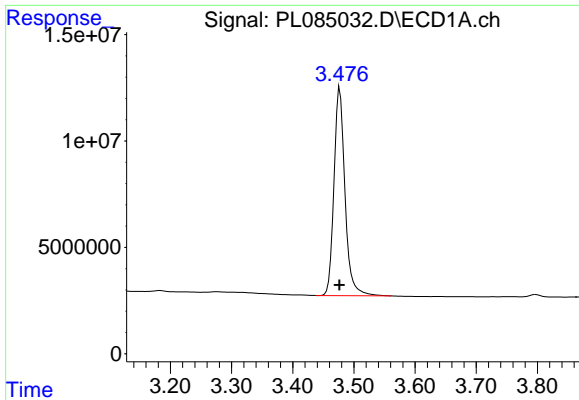
Data Path : Z:\pestpcbsrv\HPCHEM1\ECD_L\Data\PL082823\
 Data File : PL085032.D
 Signal(s) : Signal #1: ECD1A.ch Signal #2: ECD2B.ch
 Acq On : 28 Aug 2023 16:51
 Operator : AR\AJ
 Sample : PSTDCCC050
 Misc :
 ALS Vial : 4 Sample Multiplier: 1

Instrument :
 ECD_L
 ClientSampleId :
 PSTDCCC050

Integration File signal 1: autoint1.e
 Integration File signal 2: autoint2.e
 Quant Time: Aug 28 22:10:54 2023
 Quant Method : Z:\pestpcbsrv\HPCHEM1\ECD_L\methods\PL080323.M
 Quant Title : GC Extractables
 QLast Update : Thu Aug 03 16:21:43 2023
 Response via : Initial Calibration
 Integrator: ChemStation

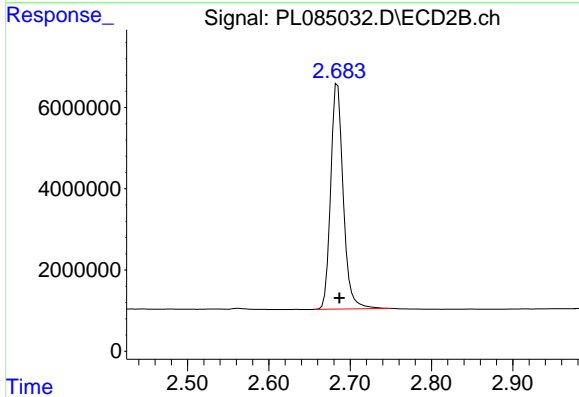
Volume Inj. : 1 µl
 Signal #1 Phase : ZB-MR2 Signal #2 Phase: ZB-MR1
 Signal #1 Info : 30M x 0.32mm x0.2 Signal #2 Info : 30M x 0.32mm x0.5µm



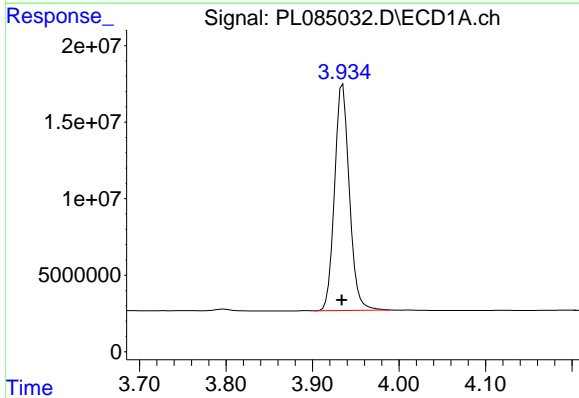


#1 Tetrachloro-m-xylene
 R.T.: 3.477 min
 Delta R.T.: 0.000 min
 Response: 122110190
 Conc: 52.55 ng/ml

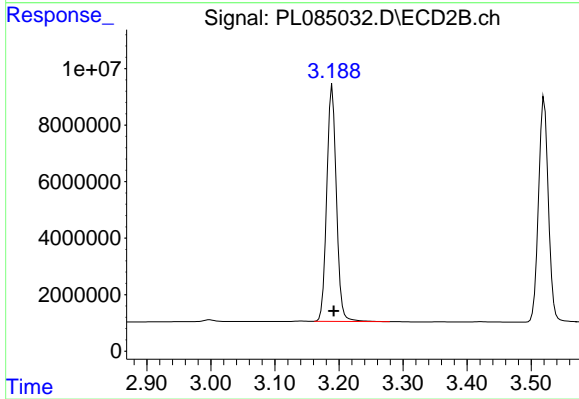
Instrument :
 ECD_L
 ClientSampleId :
 PSTDCCC050



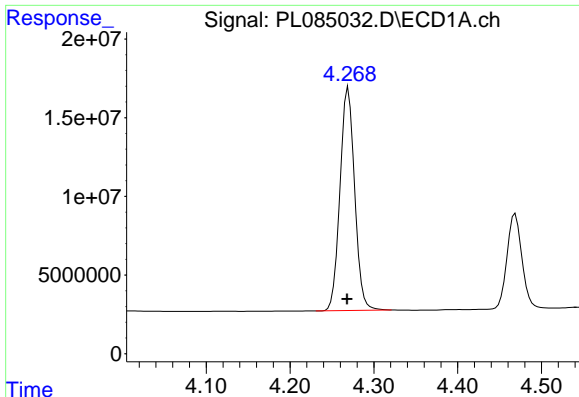
#1 Tetrachloro-m-xylene
 R.T.: 2.685 min
 Delta R.T.: -0.002 min
 Response: 59814851
 Conc: 55.01 ng/ml



#2 alpha-BHC
 R.T.: 3.935 min
 Delta R.T.: 0.001 min
 Response: 174828423
 Conc: 52.96 ng/ml



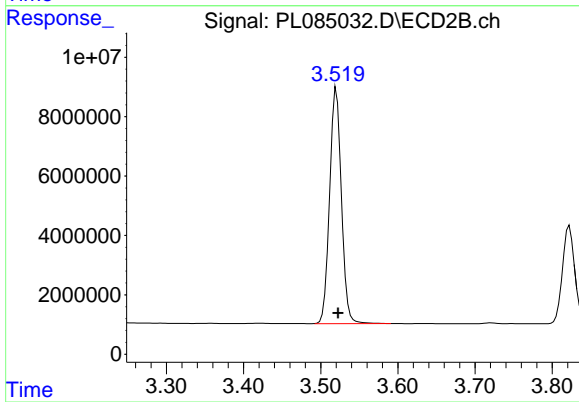
#2 alpha-BHC
 R.T.: 3.189 min
 Delta R.T.: -0.002 min
 Response: 87247092
 Conc: 56.50 ng/ml



#3 gamma-BHC (Lindane)

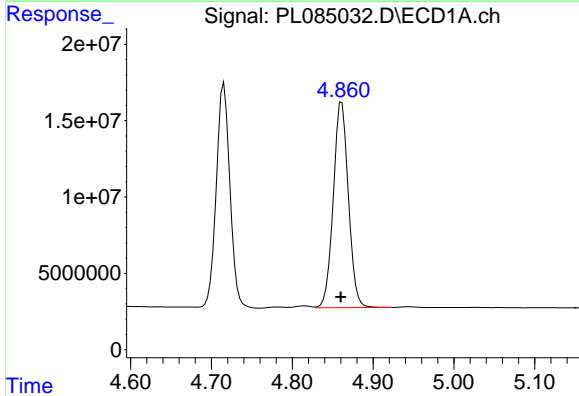
R.T.: 4.269 min
Delta R.T.: 0.001 min
Response: 172156944
Conc: 53.97 ng/ml

Instrument :
ECD_L
ClientSampleId :
PSTDCCC050



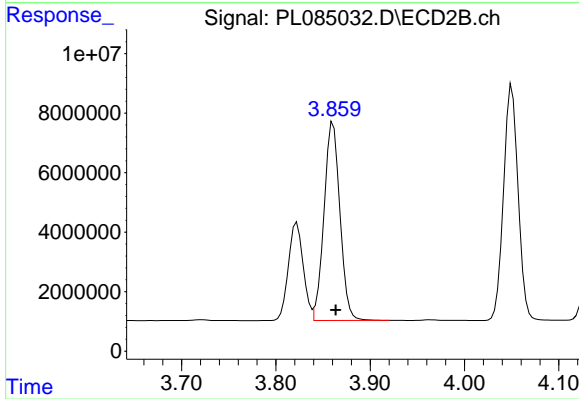
#3 gamma-BHC (Lindane)

R.T.: 3.520 min
Delta R.T.: -0.002 min
Response: 84594547
Conc: 55.67 ng/ml



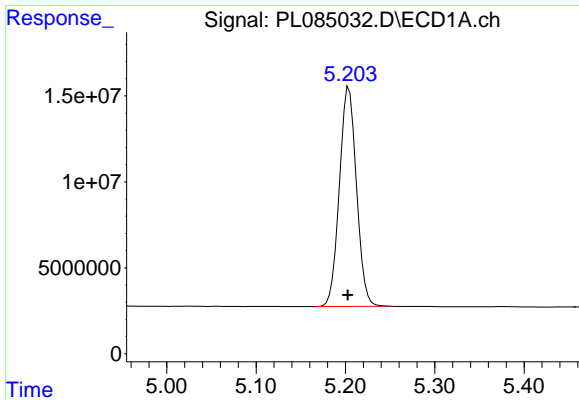
#4 Heptachlor

R.T.: 4.861 min
Delta R.T.: 0.001 min
Response: 174645645
Conc: 51.93 ng/ml



#4 Heptachlor

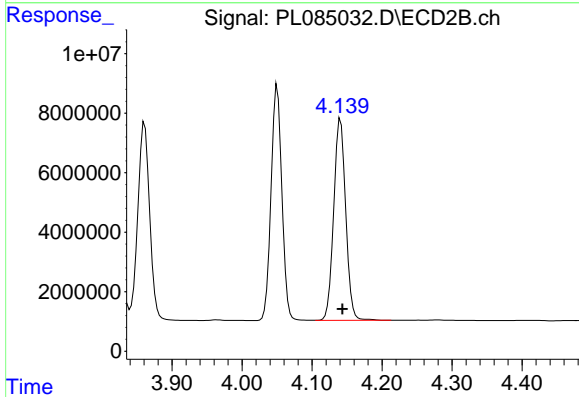
R.T.: 3.861 min
Delta R.T.: -0.003 min
Response: 78268328
Conc: 54.96 ng/ml



#5 Aldrin

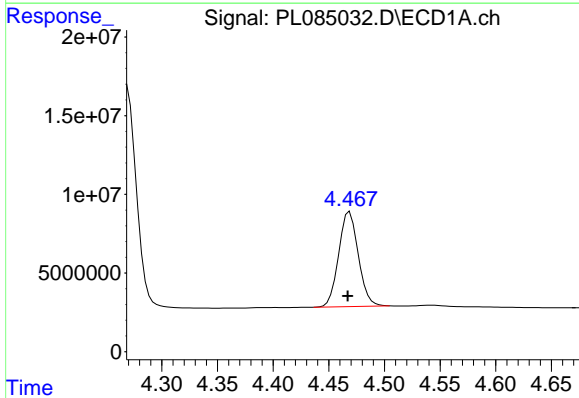
R.T.: 5.204 min
 Delta R.T.: 0.001 min
 Response: 169499132
 Conc: 51.28 ng/ml

Instrument :
 ECD_L
 ClientSampleId :
 PSTDCCC050



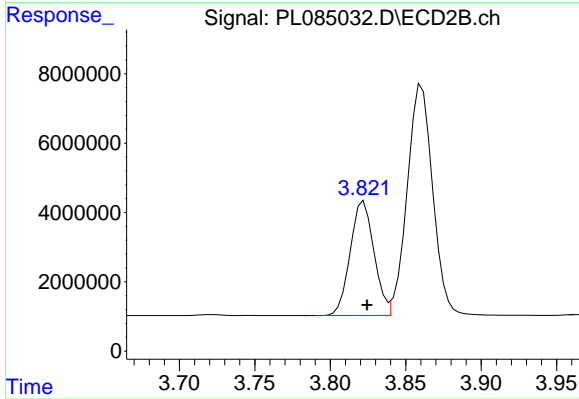
#5 Aldrin

R.T.: 4.141 min
 Delta R.T.: -0.003 min
 Response: 80883248
 Conc: 55.65 ng/ml



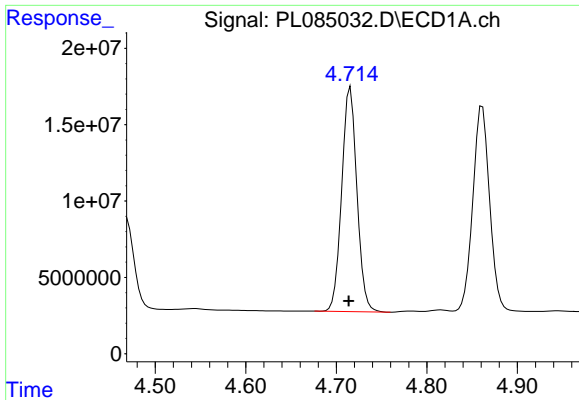
#6 beta-BHC

R.T.: 4.469 min
 Delta R.T.: 0.002 min
 Response: 74216214
 Conc: 53.13 ng/ml



#6 beta-BHC

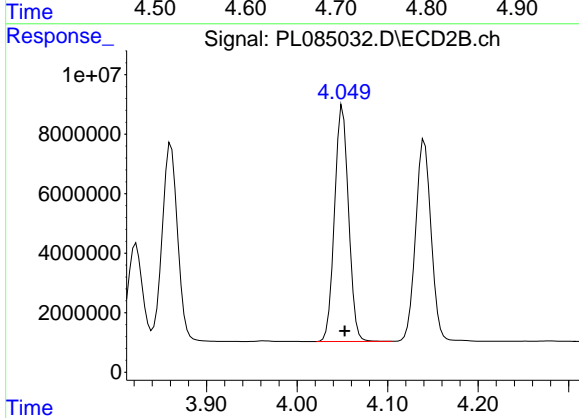
R.T.: 3.822 min
 Delta R.T.: -0.002 min
 Response: 36172013
 Conc: 53.99 ng/ml



#7 delta-BHC

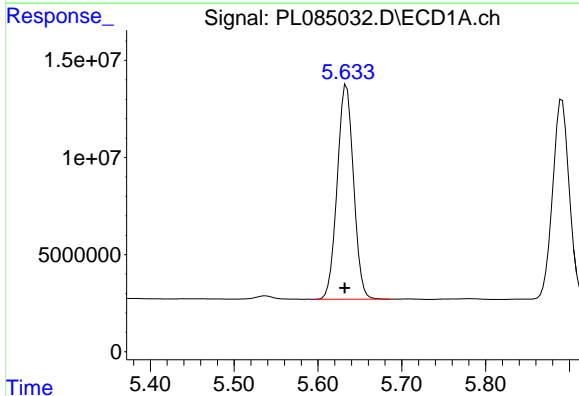
R.T.: 4.716 min
 Delta R.T.: 0.002 min
 Response: 171923624
 Conc: 53.31 ng/ml

Instrument :
 ECD_L
 ClientSampleId :
 PSTDCCC050



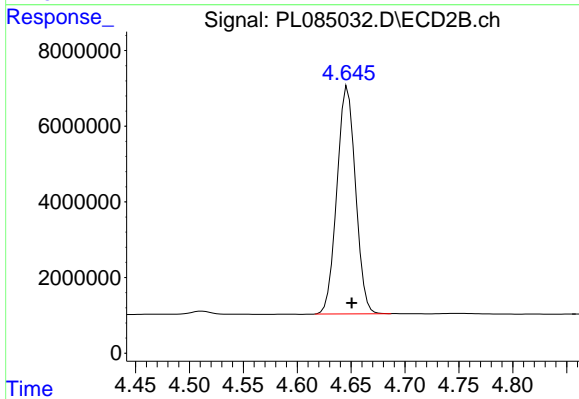
#7 delta-BHC

R.T.: 4.050 min
 Delta R.T.: -0.003 min
 Response: 85166170
 Conc: 56.10 ng/ml



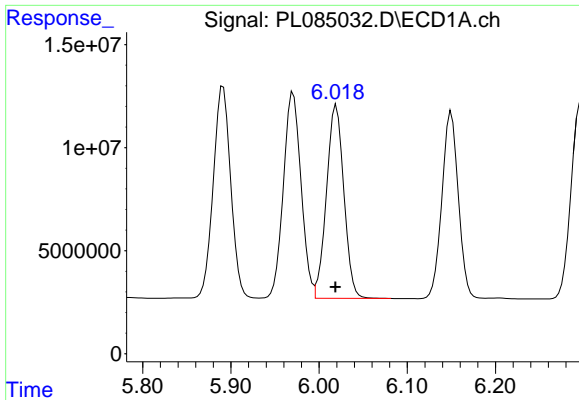
#8 Heptachlor epoxide

R.T.: 5.634 min
 Delta R.T.: 0.002 min
 Response: 149532854
 Conc: 49.63 ng/ml



#8 Heptachlor epoxide

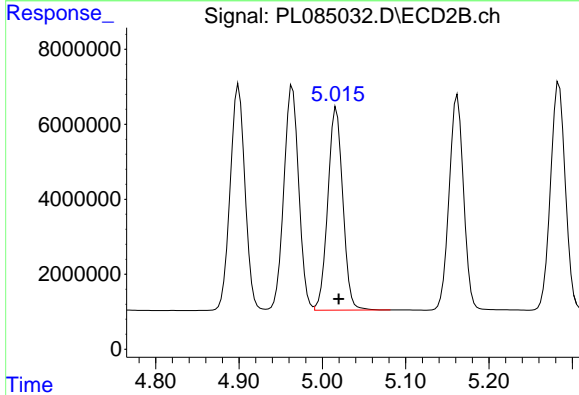
R.T.: 4.647 min
 Delta R.T.: -0.004 min
 Response: 72292898
 Conc: 54.49 ng/ml



#9 Endosulfan I

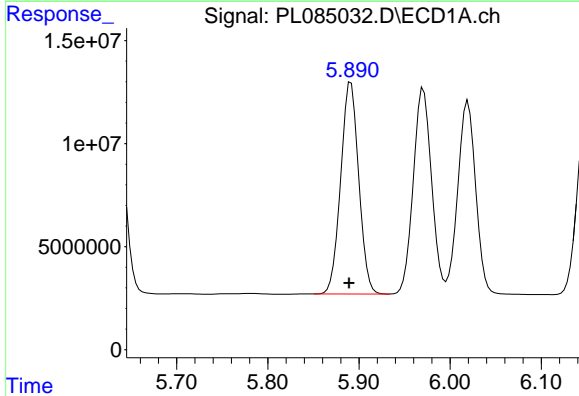
R.T.: 6.020 min
 Delta R.T.: 0.001 min
 Response: 128683231
 Conc: 48.89 ng/ml

Instrument :
 ECD_L
 ClientSampleId :
 PSTDCCC050



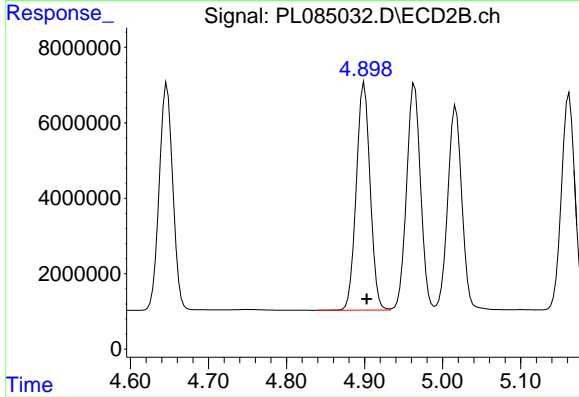
#9 Endosulfan I

R.T.: 5.017 min
 Delta R.T.: -0.003 min
 Response: 67816752
 Conc: 54.72 ng/ml



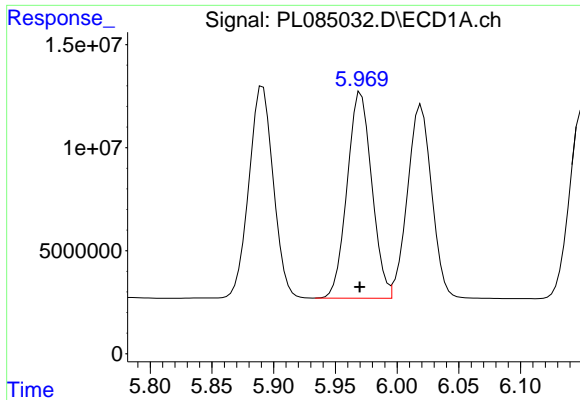
#10 gamma-Chlordane

R.T.: 5.891 min
 Delta R.T.: 0.002 min
 Response: 141326359
 Conc: 49.35 ng/ml



#10 gamma-Chlordane

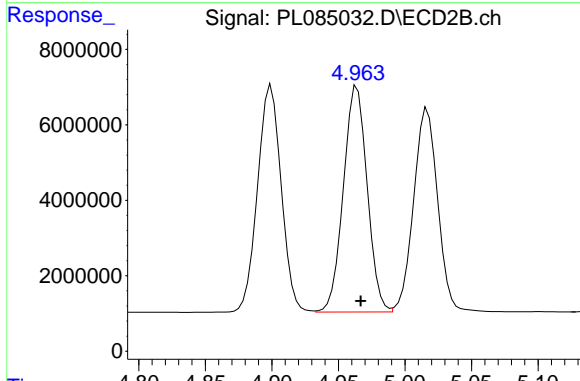
R.T.: 4.900 min
 Delta R.T.: -0.003 min
 Response: 74485563
 Conc: 54.92 ng/ml



#11 alpha-Chlordane

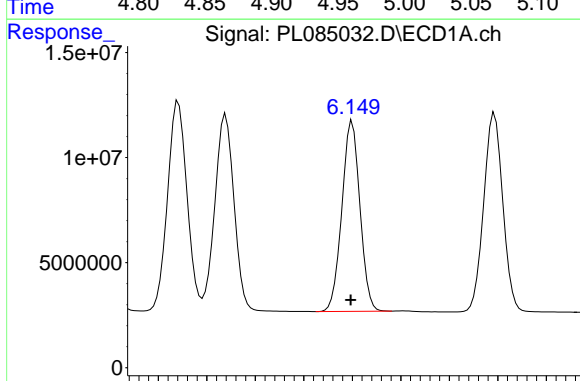
R.T.: 5.971 min
 Delta R.T.: 0.001 min
 Response: 139351487
 Conc: 49.36 ng/ml

Instrument :
 ECD_L
 ClientSampleId :
 PSTDCCC050



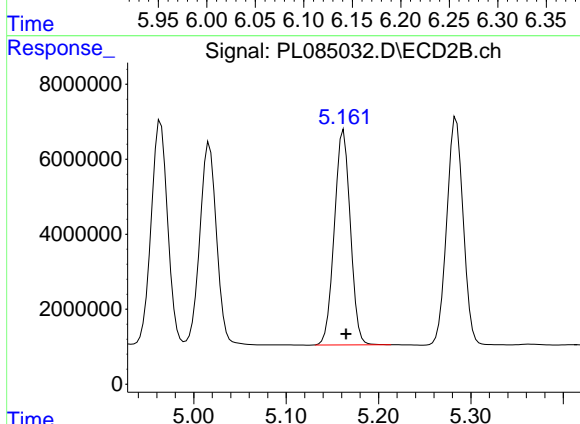
#11 alpha-Chlordane

R.T.: 4.964 min
 Delta R.T.: -0.003 min
 Response: 74579062
 Conc: 54.74 ng/ml



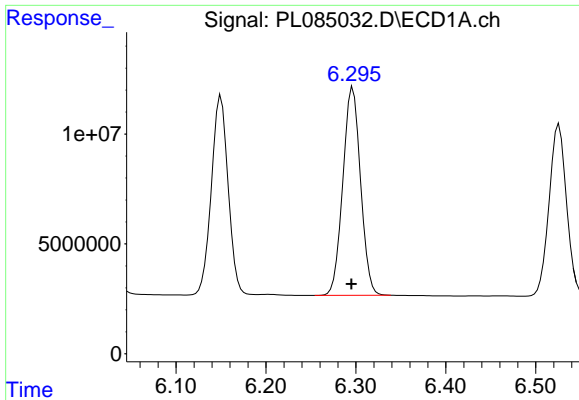
#12 4,4'-DDE

R.T.: 6.150 min
 Delta R.T.: 0.002 min
 Response: 117210845
 Conc: 51.07 ng/ml



#12 4,4'-DDE

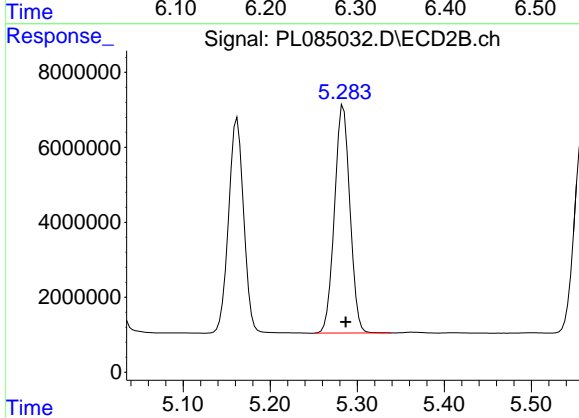
R.T.: 5.162 min
 Delta R.T.: -0.003 min
 Response: 68851773
 Conc: 55.91 ng/ml



#13 Dieldrin

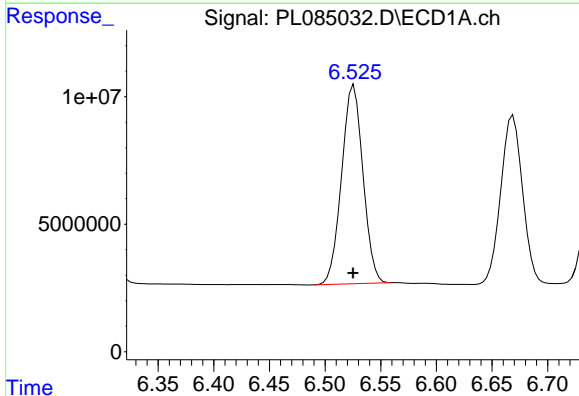
R.T.: 6.297 min
 Delta R.T.: 0.002 min
 Response: 129414204
 Conc: 48.97 ng/ml

Instrument :
 ECD_L
 ClientSampleId :
 PSTDCCC050



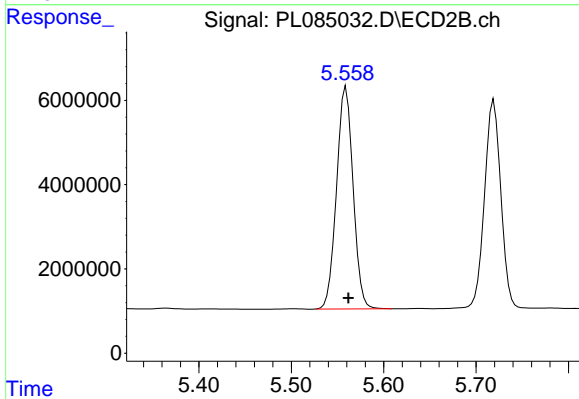
#13 Dieldrin

R.T.: 5.284 min
 Delta R.T.: -0.003 min
 Response: 75008737
 Conc: 55.24 ng/ml



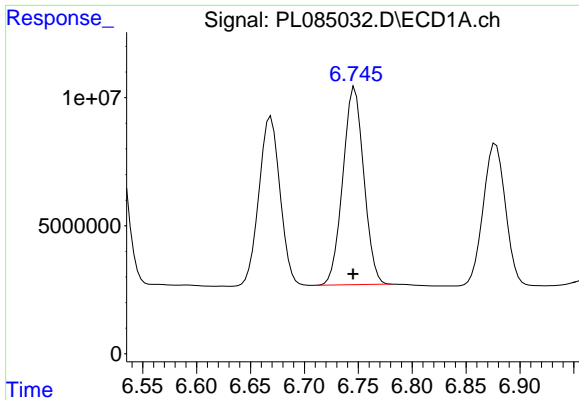
#14 Endrin

R.T.: 6.526 min
 Delta R.T.: 0.000 min
 Response: 104062752
 Conc: 47.71 ng/ml



#14 Endrin

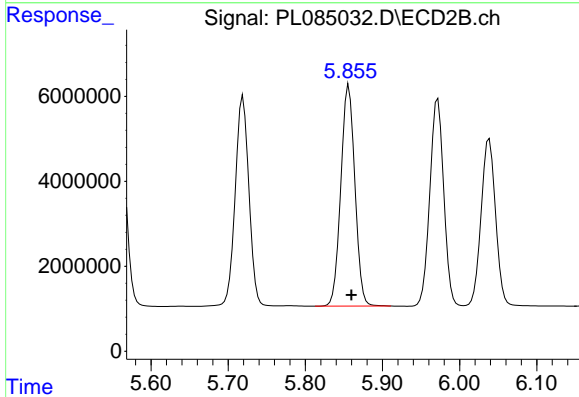
R.T.: 5.559 min
 Delta R.T.: -0.003 min
 Response: 65702700
 Conc: 53.71 ng/ml



#15 Endosulfan II

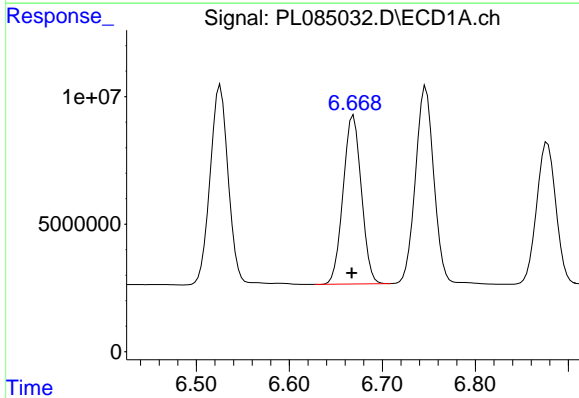
R.T.: 6.747 min
 Delta R.T.: 0.002 min
 Response: 104554421
 Conc: 49.43 ng/ml

Instrument :
 ECD_L
 ClientSampleId :
 PSTDCCC050



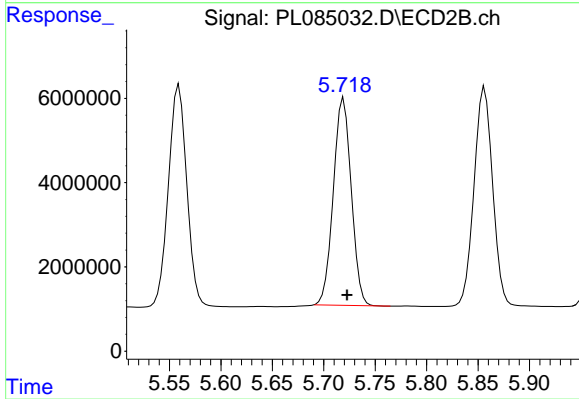
#15 Endosulfan II

R.T.: 5.856 min
 Delta R.T.: -0.003 min
 Response: 65723509
 Conc: 54.47 ng/ml



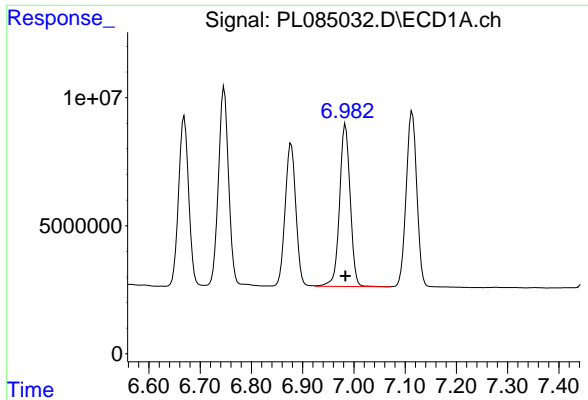
#16 4,4'-DDD

R.T.: 6.669 min
 Delta R.T.: 0.002 min
 Response: 89990751
 Conc: 53.67 ng/ml



#16 4,4'-DDD

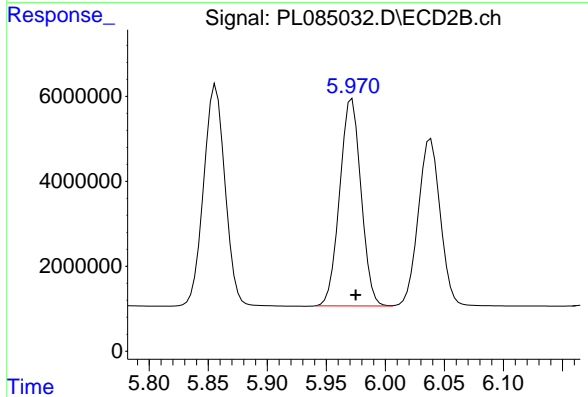
R.T.: 5.719 min
 Delta R.T.: -0.003 min
 Response: 59624432
 Conc: 57.71 ng/ml



#17 4,4'-DDT

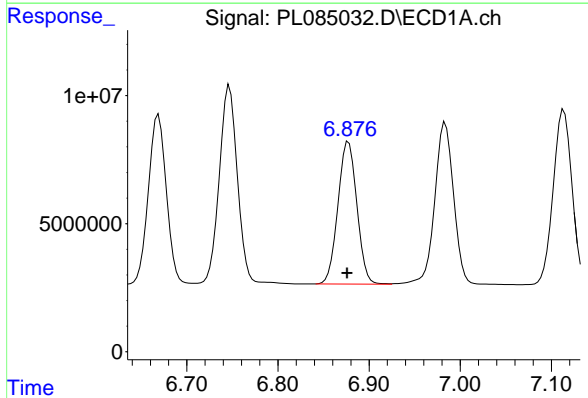
R.T.: 6.984 min
 Delta R.T.: 0.000 min
 Response: 90956596
 Conc: 48.54 ng/ml

Instrument :
 ECD_L
 ClientSampleId :
 PSTDCCC050



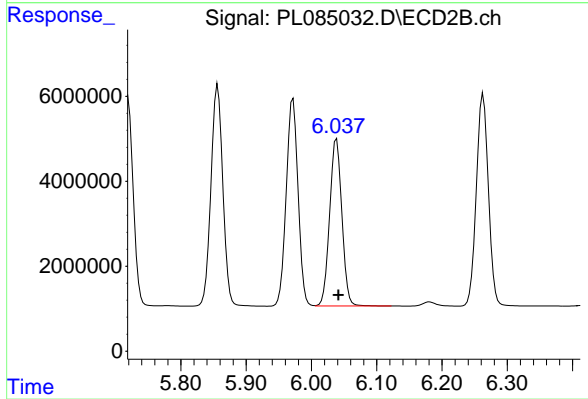
#17 4,4'-DDT

R.T.: 5.972 min
 Delta R.T.: -0.003 min
 Response: 61298487
 Conc: 52.82 ng/ml



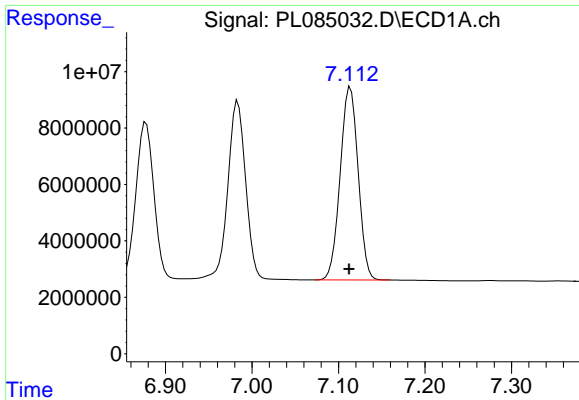
#18 Endrin aldehyde

R.T.: 6.878 min
 Delta R.T.: 0.002 min
 Response: 80399220
 Conc: 47.66 ng/ml



#18 Endrin aldehyde

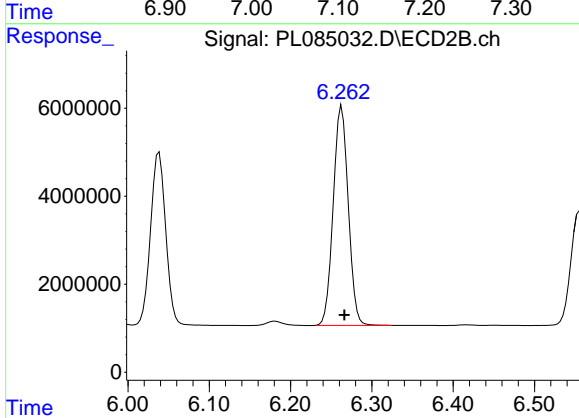
R.T.: 6.038 min
 Delta R.T.: -0.003 min
 Response: 51226036
 Conc: 51.65 ng/ml



#19 Endosulfan Sulfate

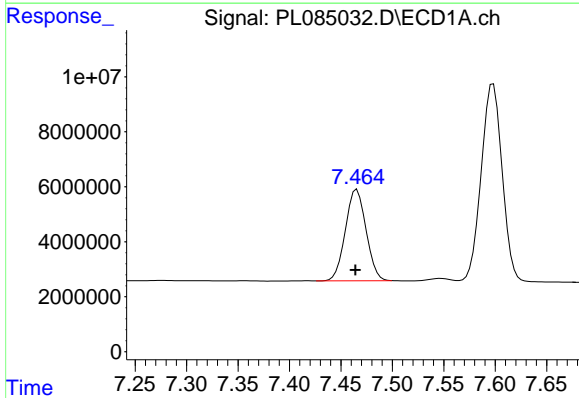
R.T.: 7.114 min
 Delta R.T.: 0.002 min
 Response: 98095289
 Conc: 49.10 ng/ml

Instrument :
 ECD_L
 ClientSampleId :
 PSTDCCC050



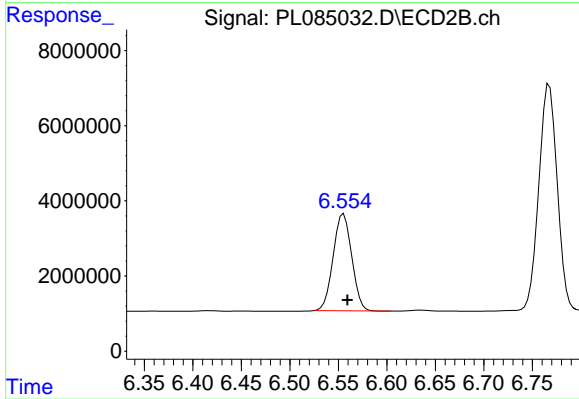
#19 Endosulfan Sulfate

R.T.: 6.263 min
 Delta R.T.: -0.003 min
 Response: 64148670
 Conc: 53.94 ng/ml



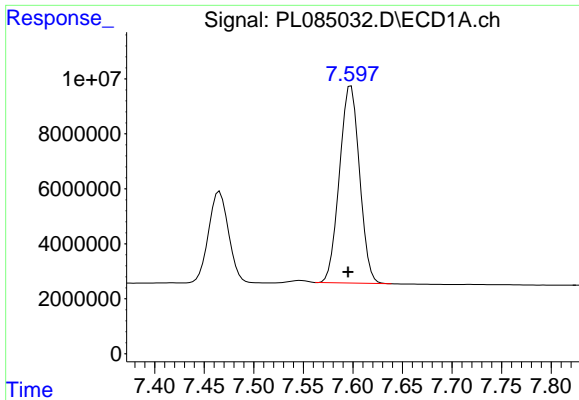
#20 Methoxychlor

R.T.: 7.466 min
 Delta R.T.: 0.001 min
 Response: 46512995
 Conc: 48.47 ng/ml



#20 Methoxychlor

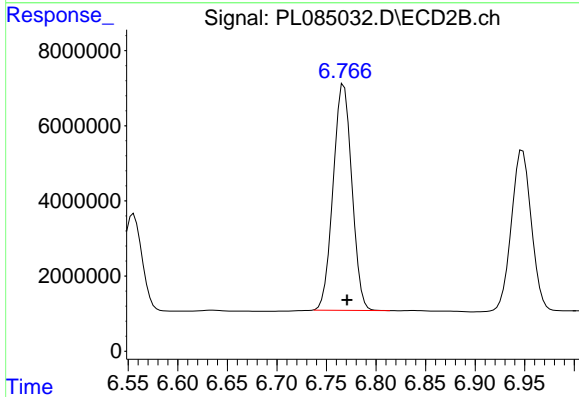
R.T.: 6.556 min
 Delta R.T.: -0.004 min
 Response: 34322377
 Conc: 50.03 ng/ml



#21 Endrin ketone

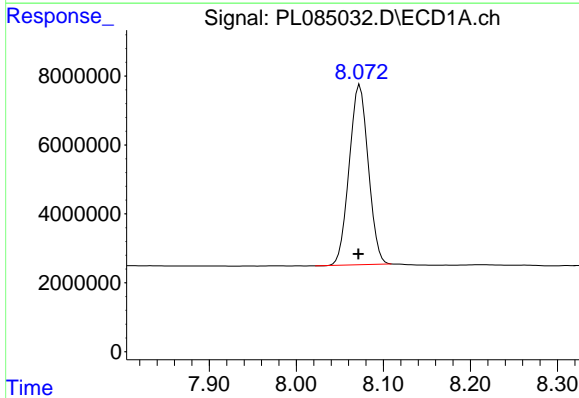
R.T.: 7.598 min
 Delta R.T.: 0.003 min
 Response: 101083906
 Conc: 50.53 ng/ml

Instrument :
 ECD_L
 ClientSampleId :
 PSTDCCC050



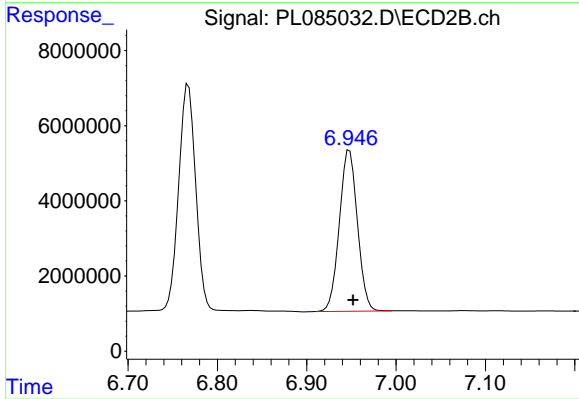
#21 Endrin ketone

R.T.: 6.768 min
 Delta R.T.: -0.003 min
 Response: 79102062
 Conc: 54.82 ng/ml



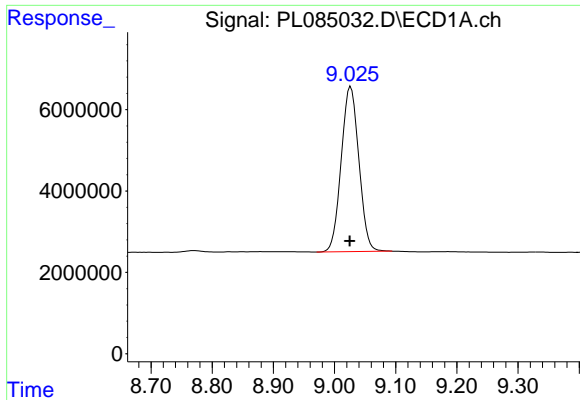
#22 Mirex

R.T.: 8.073 min
 Delta R.T.: 0.002 min
 Response: 79593642
 Conc: 47.92 ng/ml



#22 Mirex

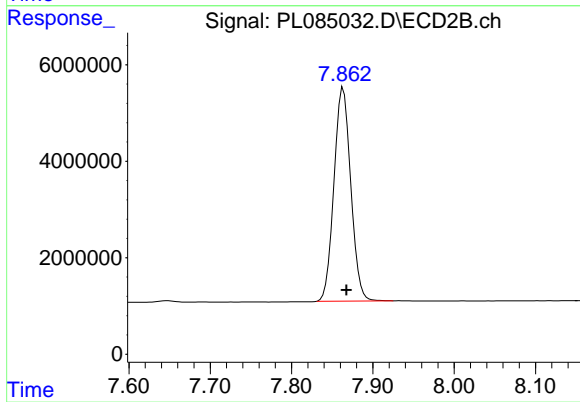
R.T.: 6.948 min
 Delta R.T.: -0.004 min
 Response: 60193014
 Conc: 52.19 ng/ml



#28 Decachlorobiphenyl

R.T.: 9.027 min
Delta R.T.: 0.002 min
Response: 81299274
Conc: 49.97 ng/ml

Instrument :
ECD_L
ClientSampleId :
PSTDCCC050



#28 Decachlorobiphenyl

R.T.: 7.864 min
Delta R.T.: -0.004 min
Response: 63680117
Conc: 51.07 ng/ml