

Data Path : Z:\pestpcbsrv\HPCHEM1\ECD_L\Data\PL082923\
 Data File : PL085075.D
 Signal(s) : Signal #1: ECD1A.ch Signal #2: ECD2B.ch
 Acq On : 29 Aug 2023 22:22
 Operator : AR\AJ
 Sample : 04198-08
 Misc :
 ALS Vial : 38 Sample Multiplier: 1

Instrument :
 ECD_L
 ClientSampleId :

Integration File signal 1: autoint1.e
 Integration File signal 2: autoint2.e
 Quant Time: Aug 30 03:43:50 2023
 Quant Method : Z:\pestpcbsrv\HPCHEM1\ECD_L\methods\PL080323.M
 Quant Title : GC Extractables
 QLast Update : Thu Aug 03 16:21:43 2023
 Response via : Initial Calibration
 Integrator: ChemStation

Volume Inj. : 1 µl
 Signal #1 Phase : ZB-MR2 Signal #2 Phase: ZB-MR1
 Signal #1 Info : 30M x 0.32mm x0.2 Signal #2 Info : 30M x 0.32mm x0.5µm

Compound	RT#1	RT#2	Resp#1	Resp#2	ng/ml	ng/ml

System Monitoring Compounds						
1) SA Tetrachlo...	3.477	2.684	34238557	16368948	14.736	15.053
28) SA Decachlor...	9.027	7.864	27720695	21488321	17.037	17.235
Target Compounds						
2) A alpha-BHC	0.000	3.218f	0	111458	N.D.	0.072 #
4) MA Heptachlor	4.862	3.893f	3255980	156292	0.968	0.110 #
5) MB Aldrin	0.000	4.126f	0	94319	N.D.	0.065 #
6) B beta-BHC	4.492f	0.000	463225	0	0.332	N.D. #
7) B delta-BHC	4.716	0.000	6693197	0	2.076	N.D. #
8) B Heptachlo...	5.633	4.645	3413843	140236	1.133	0.106 #
10) B gamma-Chl...	0.000	4.922f	0	59440	N.D.	0.044 #
11) B alpha-Chl...	0.000	4.957	0	124255	N.D.	0.091 #
12) B 4,4'-DDE	0.000	5.181f	0	50651	N.D.	0.041 #
13) MA Dieldrin	6.297	5.282	722822	294808	0.274	0.217
14) MA Endrin	0.000	5.580f	0	282575	N.D.	0.231 #
18) B Endrin al...	0.000	6.054	0	40913	N.D.	0.041 #
19) B Endosulfa...	0.000	6.253	0	31133	N.D.	0.026 #
20) A Methoxychlor	0.000	6.561	0	100906	N.D.	0.147 #
22) Mirex	0.000	6.956	0	70217	N.D.	0.061 #
23) Chlordane-1	0.000	3.706f	0	75451	N.D.	1.969 #
24) Chlordane-2	0.000	4.257	0	112964	N.D.	2.255 #
25) Chlordane-3	0.000	4.922f	0	59440	N.D.	0.429 #
26) Chlordane-4	0.000	4.957	0	124255	N.D.	0.866 #

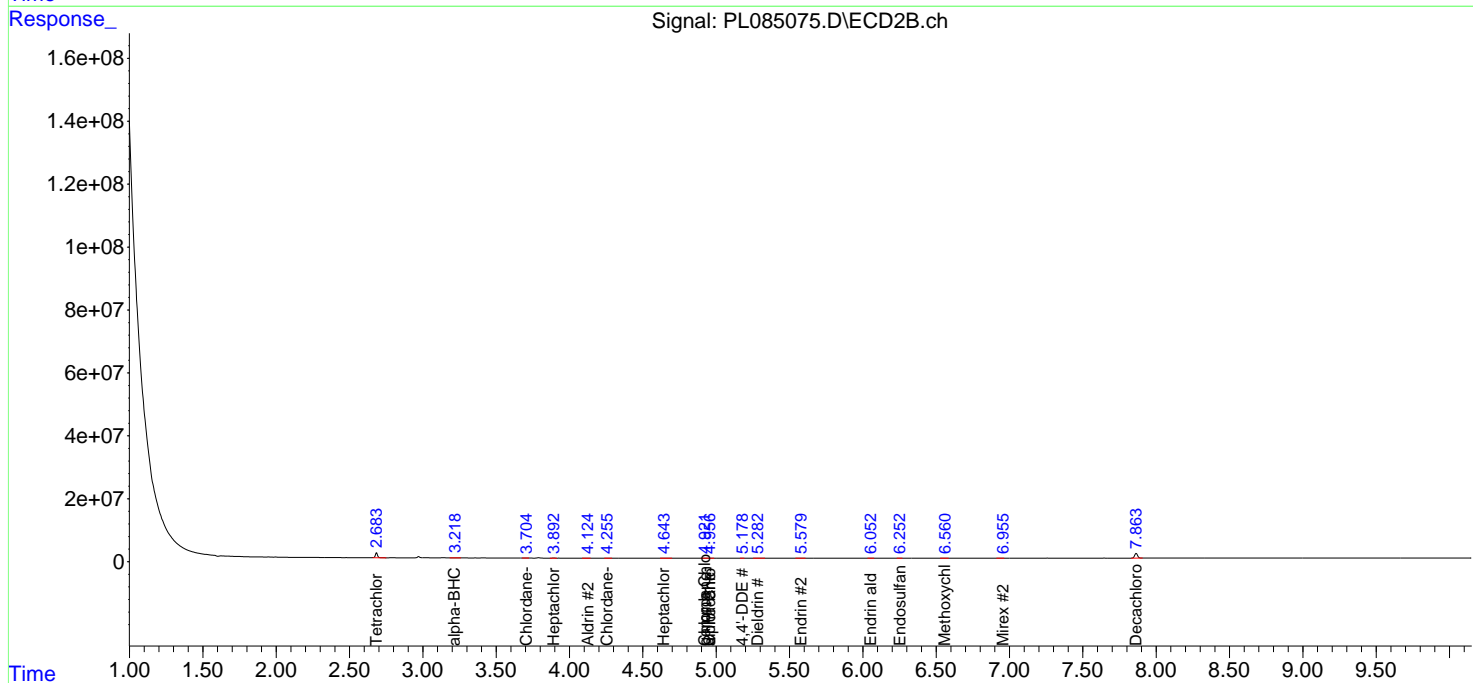
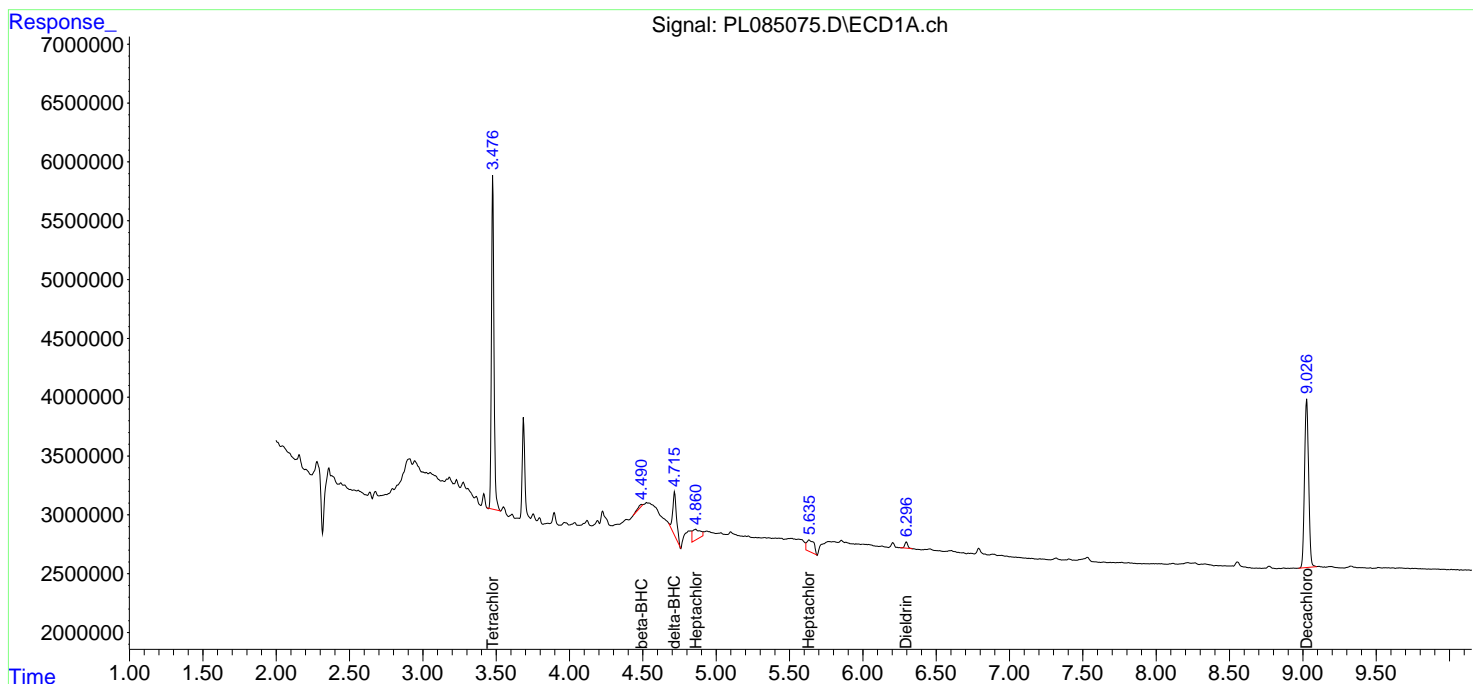
(f)=RT Delta > 1/2 Window (#)=Amounts differ by > 25% (m)=manual int.

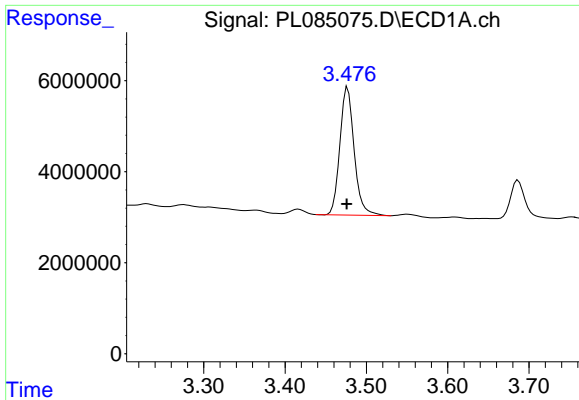
Data Path : Z:\pestpcbsrv\HPCHEM1\ECD_L\Data\PL082923\
 Data File : PL085075.D
 Signal(s) : Signal #1: ECD1A.ch Signal #2: ECD2B.ch
 Acq On : 29 Aug 2023 22:22
 Operator : AR\AJ
 Sample : 04198-08
 Misc :
 ALS Vial : 38 Sample Multiplier: 1

Instrument :
 ECD_L
 ClientSampleId :

Integration File signal 1: autoint1.e
 Integration File signal 2: autoint2.e
 Quant Time: Aug 30 03:43:50 2023
 Quant Method : Z:\pestpcbsrv\HPCHEM1\ECD_L\methods\PL080323.M
 Quant Title : GC Extractables
 QLast Update : Thu Aug 03 16:21:43 2023
 Response via : Initial Calibration
 Integrator: ChemStation

Volume Inj. : 1 µl
 Signal #1 Phase : ZB-MR2 Signal #2 Phase: ZB-MR1
 Signal #1 Info : 30M x 0.32mm x0.2 Signal #2 Info : 30M x 0.32mm x0.5µm

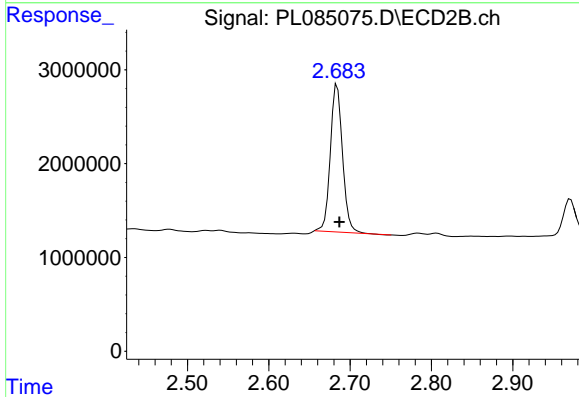




#1 Tetrachloro-m-xylene

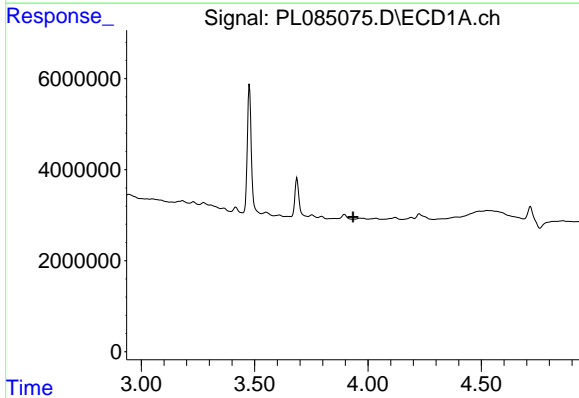
R.T.: 3.477 min
 Delta R.T.: 0.001 min
 Response: 34238557
 Conc: 14.74 ng/ml

Instrument :
 ECD_L
 ClientSampleId :



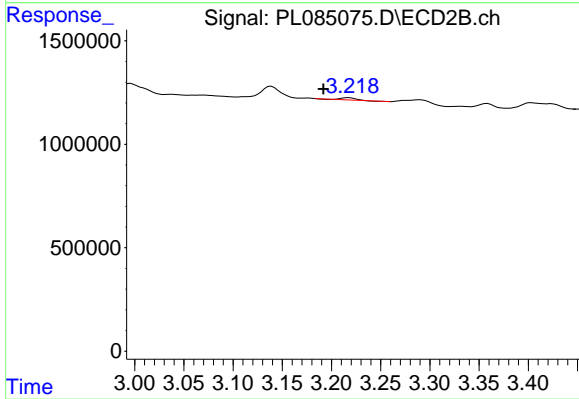
#1 Tetrachloro-m-xylene

R.T.: 2.684 min
 Delta R.T.: -0.003 min
 Response: 16368948
 Conc: 15.05 ng/ml



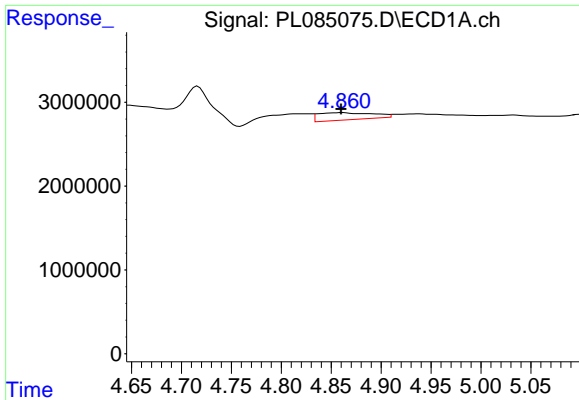
#2 alpha-BHC

R.T.: 0.000 min
 Exp R.T. : 3.934 min
 Response: 0
 Conc: N.D.



#2 alpha-BHC

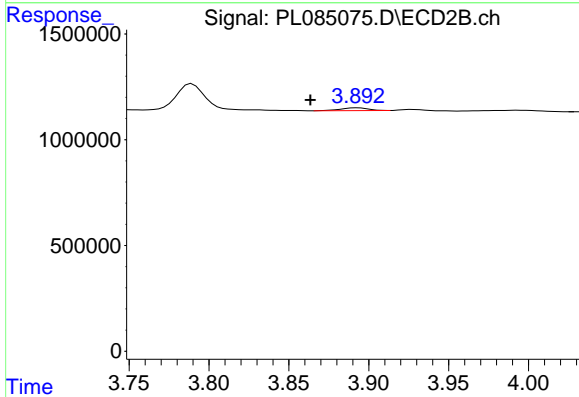
R.T.: 3.218 min
 Delta R.T.: 0.026 min
 Response: 111458
 Conc: 0.07 ng/ml



#4 Heptachlor

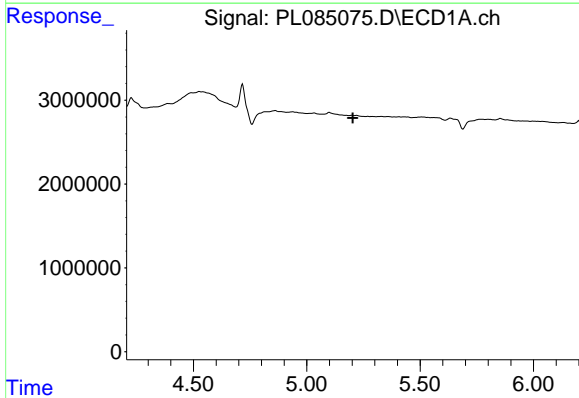
R.T.: 4.862 min
 Delta R.T.: 0.002 min
 Response: 3255980
 Conc: 0.97 ng/ml

Instrument :
 ECD_L
 ClientSampleId :



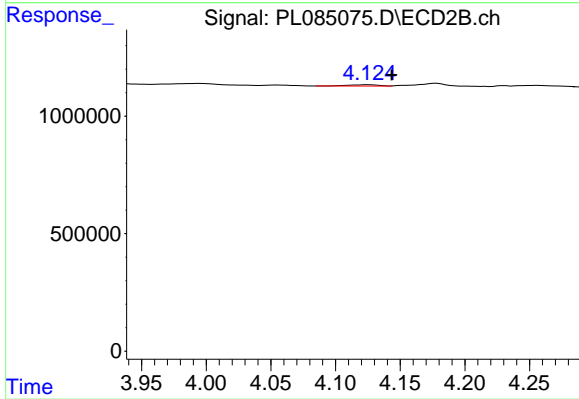
#4 Heptachlor

R.T.: 3.893 min
 Delta R.T.: 0.030 min
 Response: 156292
 Conc: 0.11 ng/ml



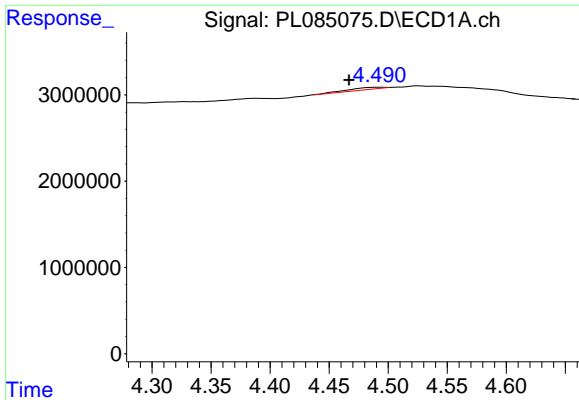
#5 Aldrin

R.T.: 0.000 min
 Exp R.T. : 5.203 min
 Response: 0
 Conc: N.D.



#5 Aldrin

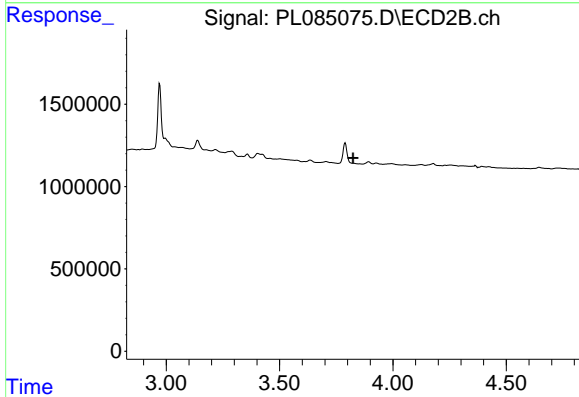
R.T.: 4.126 min
 Delta R.T.: -0.018 min
 Response: 94319
 Conc: 0.06 ng/ml



#6 beta-BHC

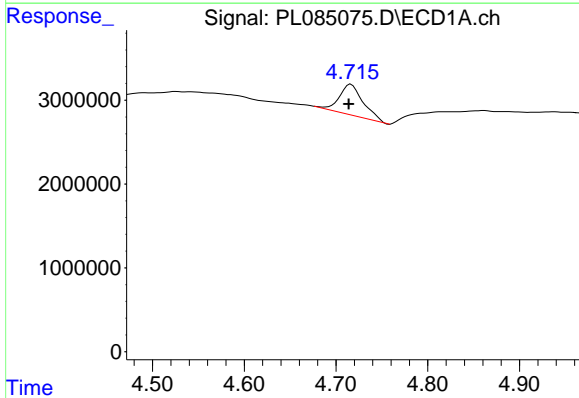
R.T.: 4.492 min
 Delta R.T.: 0.025 min
 Response: 463225
 Conc: 0.33 ng/ml

Instrument :
 ECD_L
 ClientSampleId :



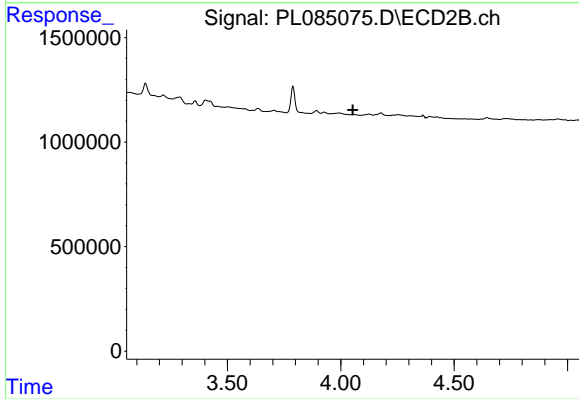
#6 beta-BHC

R.T.: 0.000 min
 Exp R.T. : 3.824 min
 Response: 0
 Conc: N.D.



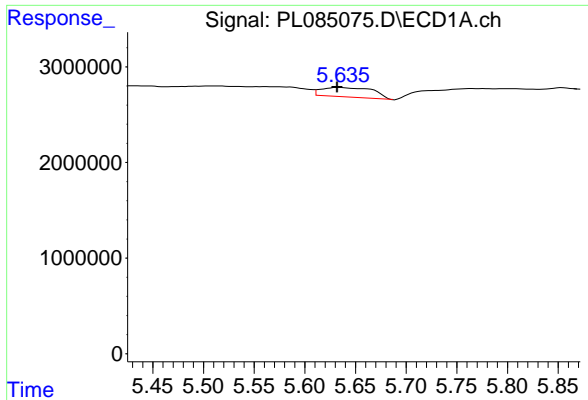
#7 delta-BHC

R.T.: 4.716 min
 Delta R.T.: 0.002 min
 Response: 6693197
 Conc: 2.08 ng/ml



#7 delta-BHC

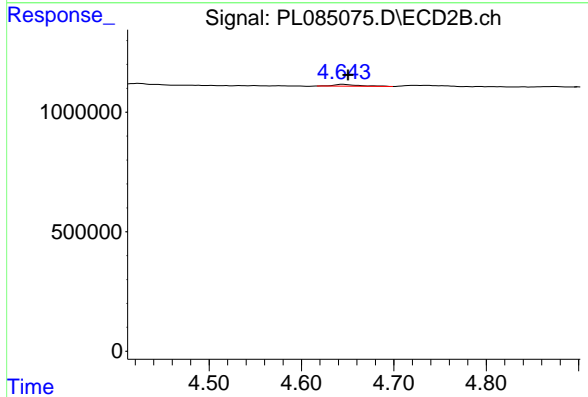
R.T.: 0.000 min
 Exp R.T. : 4.053 min
 Response: 0
 Conc: N.D.



#8 Heptachlor epoxide

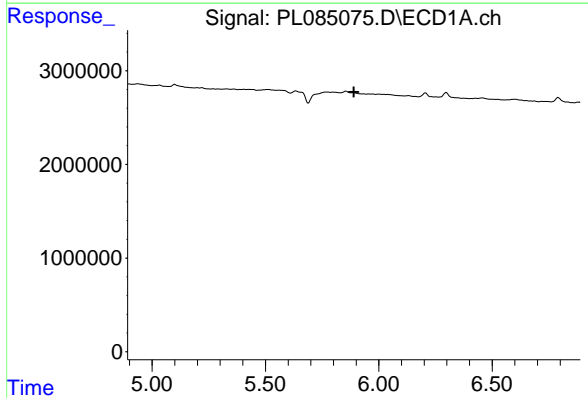
R.T.: 5.633 min
 Delta R.T.: 0.001 min
 Response: 3413843
 Conc: 1.13 ng/ml

Instrument :
 ECD_L
 ClientSampleId :



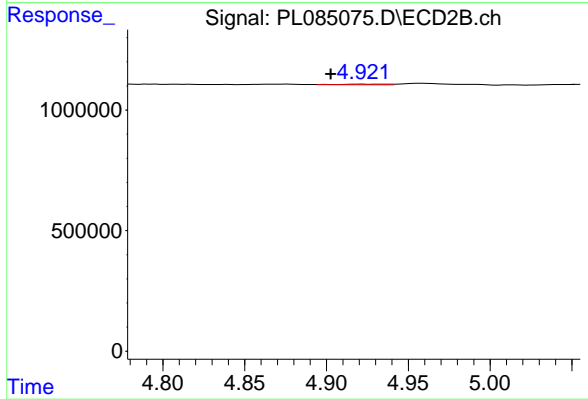
#8 Heptachlor epoxide

R.T.: 4.645 min
 Delta R.T.: -0.006 min
 Response: 140236
 Conc: 0.11 ng/ml



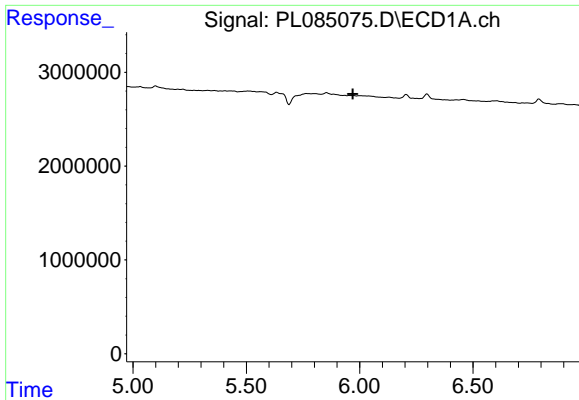
#10 gamma-Chlordane

R.T.: 0.000 min
 Exp R.T. : 5.889 min
 Response: 0
 Conc: N.D.



#10 gamma-Chlordane

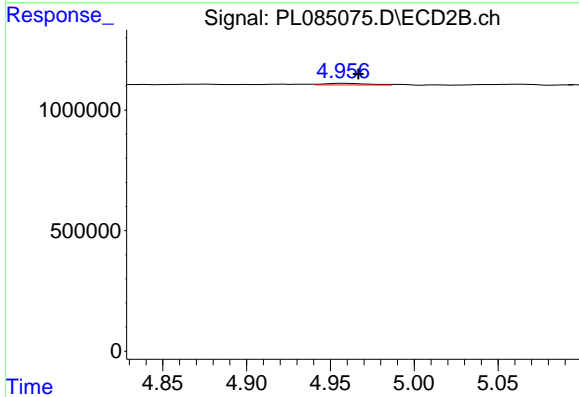
R.T.: 4.922 min
 Delta R.T.: 0.020 min
 Response: 59440
 Conc: 0.04 ng/ml



#11 alpha-Chlordane

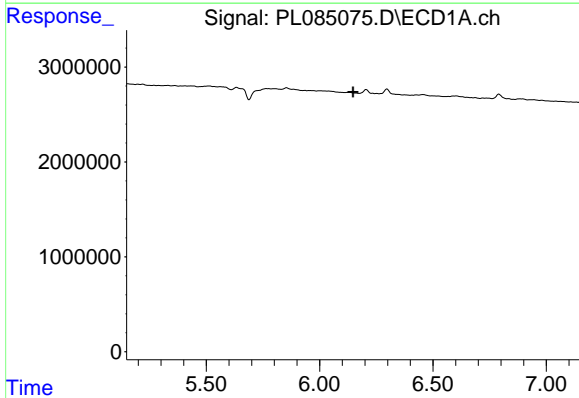
R.T.: 0.000 min
 Exp R.T.: 5.970 min
 Response: 0
 Conc: N.D.

Instrument :
 ECD_L
 ClientSampleId :



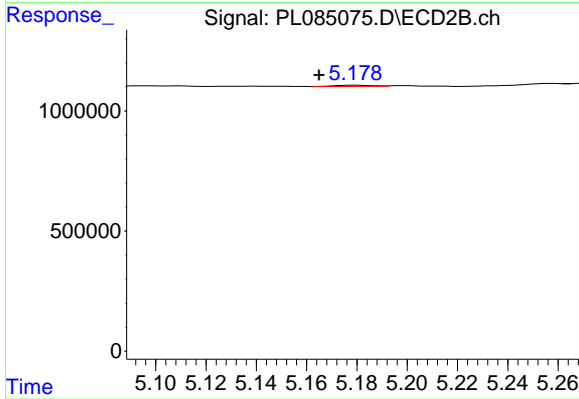
#11 alpha-Chlordane

R.T.: 4.957 min
 Delta R.T.: -0.009 min
 Response: 124255
 Conc: 0.09 ng/ml



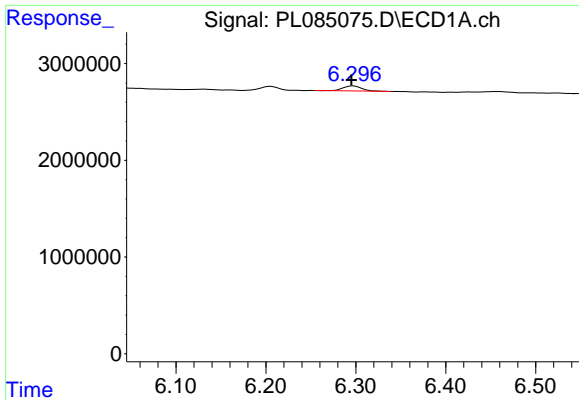
#12 4,4'-DDE

R.T.: 0.000 min
 Exp R.T.: 6.148 min
 Response: 0
 Conc: N.D.



#12 4,4'-DDE

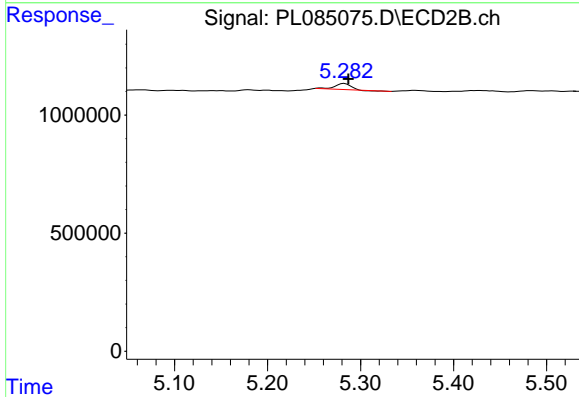
R.T.: 5.181 min
 Delta R.T.: 0.016 min
 Response: 50651
 Conc: 0.04 ng/ml



#13 Dieldrin

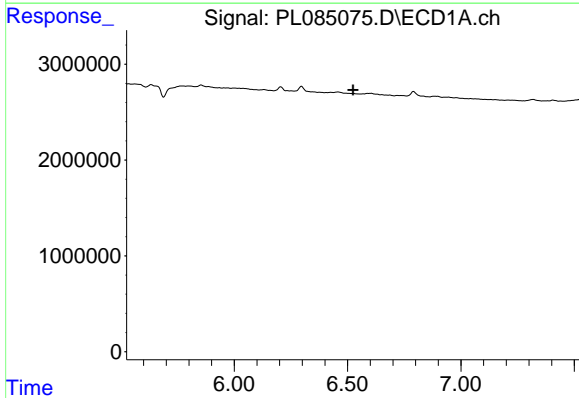
R.T.: 6.297 min
 Delta R.T.: 0.002 min
 Response: 722822
 Conc: 0.27 ng/ml

Instrument :
 ECD_L
 ClientSampleId :



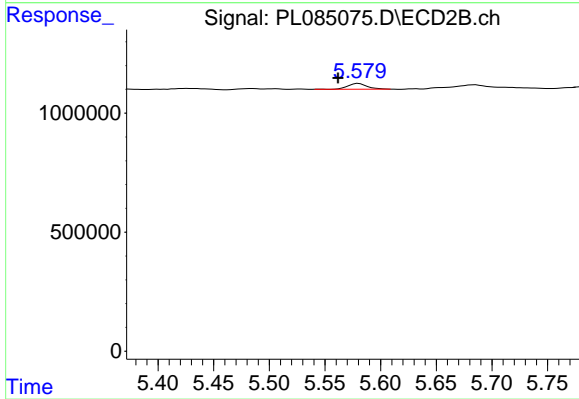
#13 Dieldrin

R.T.: 5.282 min
 Delta R.T.: -0.004 min
 Response: 294808
 Conc: 0.22 ng/ml



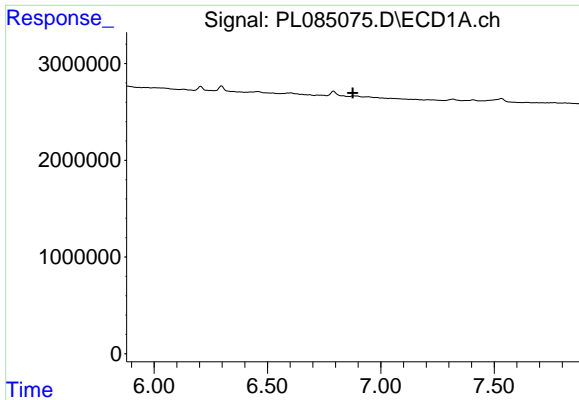
#14 Endrin

R.T.: 0.000 min
 Exp R.T. : 6.525 min
 Response: 0
 Conc: N.D.



#14 Endrin

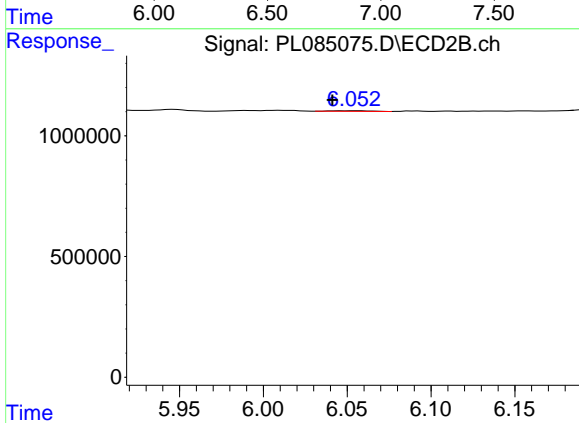
R.T.: 5.580 min
 Delta R.T.: 0.018 min
 Response: 282575
 Conc: 0.23 ng/ml



#18 Endrin aldehyde

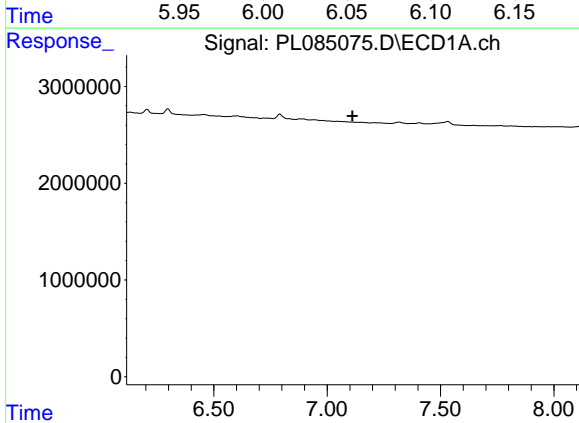
R.T.: 0.000 min
 Exp R.T.: 6.876 min
 Response: 0
 Conc: N.D.

Instrument :
 ECD_L
 ClientSampleId :



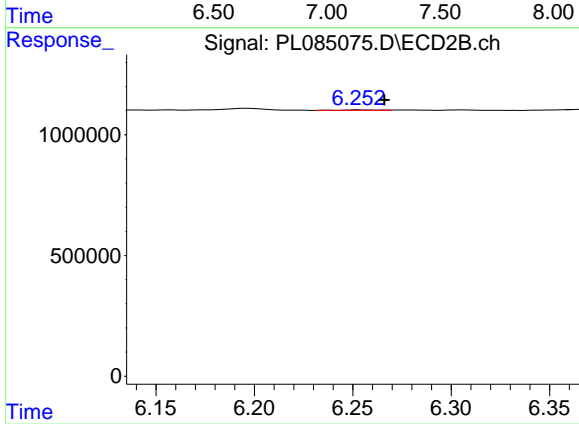
#18 Endrin aldehyde

R.T.: 6.054 min
 Delta R.T.: 0.012 min
 Response: 40913
 Conc: 0.04 ng/ml



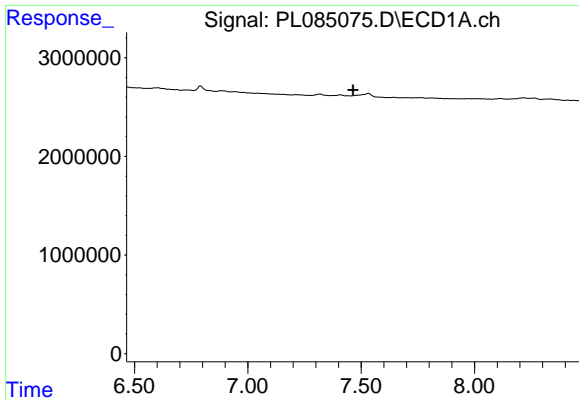
#19 Endosulfan Sulfate

R.T.: 0.000 min
 Exp R.T.: 7.112 min
 Response: 0
 Conc: N.D.



#19 Endosulfan Sulfate

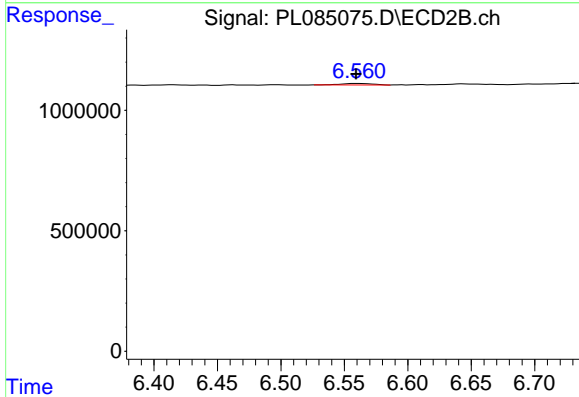
R.T.: 6.253 min
 Delta R.T.: -0.013 min
 Response: 31133
 Conc: 0.03 ng/ml



#20 Methoxychlor

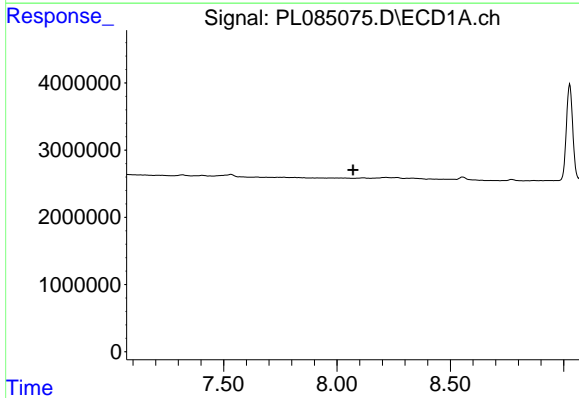
R.T.: 0.000 min
 Exp R.T.: 7.464 min
 Response: 0
 Conc: N.D.

Instrument :
 ECD_L
 ClientSampleId :



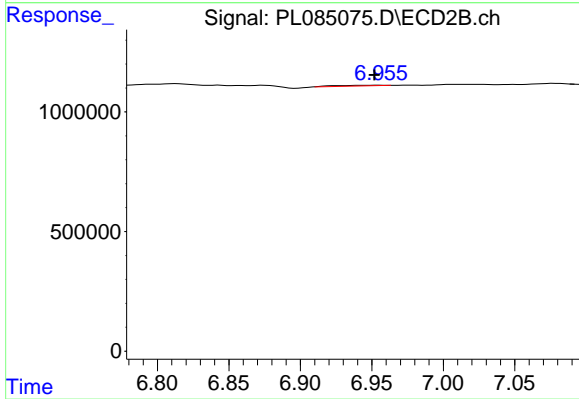
#20 Methoxychlor

R.T.: 6.561 min
 Delta R.T.: 0.002 min
 Response: 100906
 Conc: 0.15 ng/ml



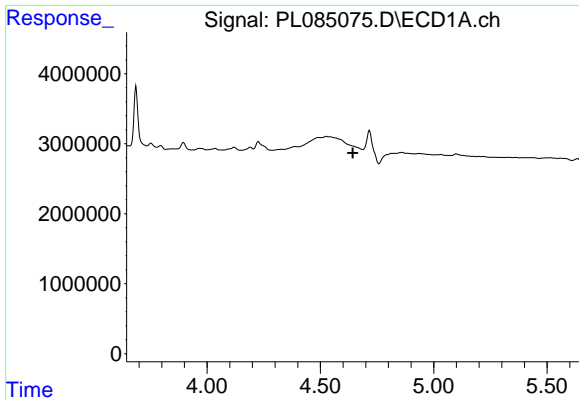
#22 Mirex

R.T.: 0.000 min
 Exp R.T.: 8.071 min
 Response: 0
 Conc: N.D.



#22 Mirex

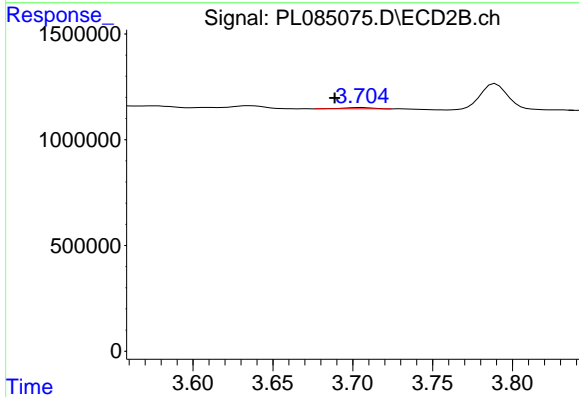
R.T.: 6.956 min
 Delta R.T.: 0.004 min
 Response: 70217
 Conc: 0.06 ng/ml



#23 Chlordane-1

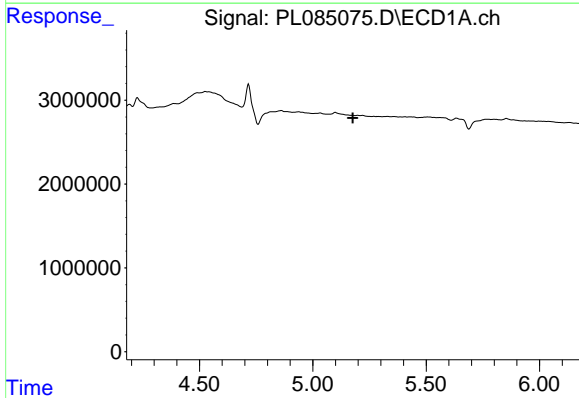
R.T.: 0.000 min
 Exp R.T.: 4.644 min
 Response: 0
 Conc: N.D.

Instrument :
 ECD_L
 ClientSampleId :



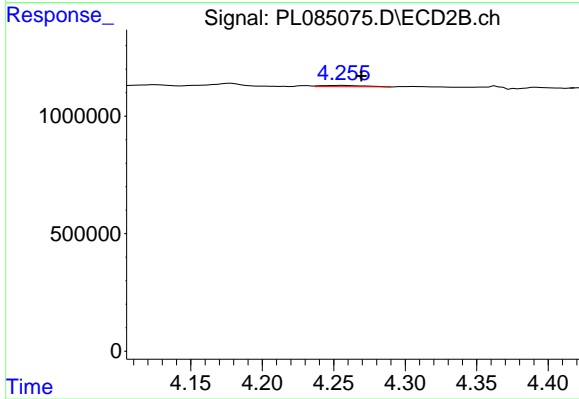
#23 Chlordane-1

R.T.: 3.706 min
 Delta R.T.: 0.017 min
 Response: 75451
 Conc: 1.97 ng/ml



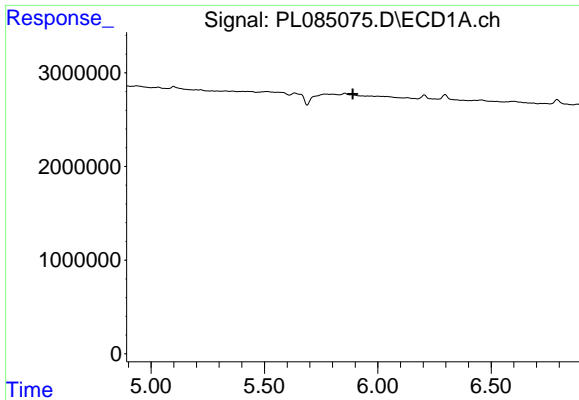
#24 Chlordane-2

R.T.: 0.000 min
 Exp R.T.: 5.177 min
 Response: 0
 Conc: N.D.



#24 Chlordane-2

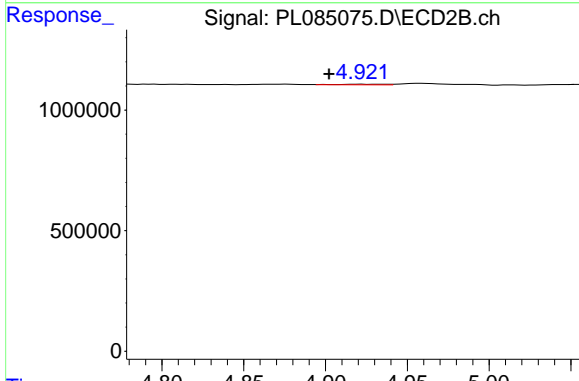
R.T.: 4.257 min
 Delta R.T.: -0.013 min
 Response: 112964
 Conc: 2.26 ng/ml



#25 Chlordane-3

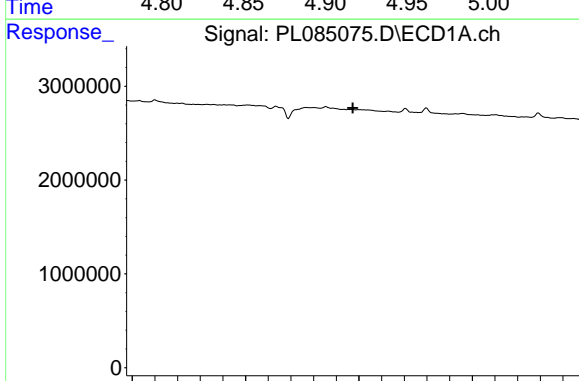
R.T.: 0.000 min
 Exp R.T.: 5.890 min
 Response: 0
 Conc: N.D.

Instrument :
 ECD_L
 ClientSampleId :



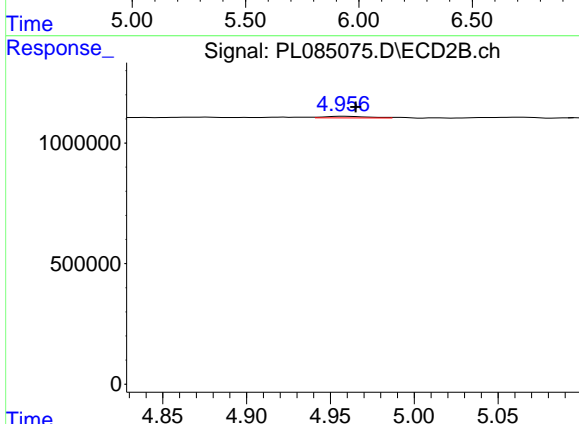
#25 Chlordane-3

R.T.: 4.922 min
 Delta R.T.: 0.020 min
 Response: 59440
 Conc: 0.43 ng/ml



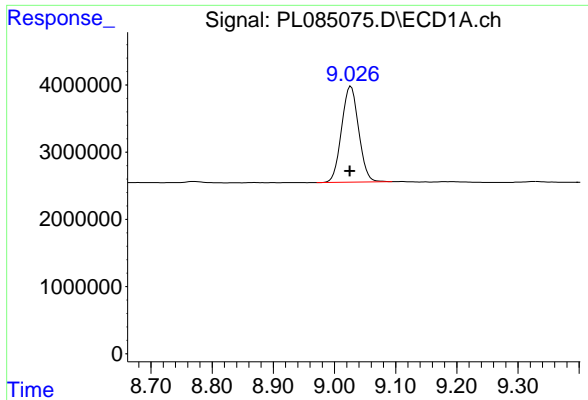
#26 Chlordane-4

R.T.: 0.000 min
 Exp R.T.: 5.973 min
 Response: 0
 Conc: N.D.



#26 Chlordane-4

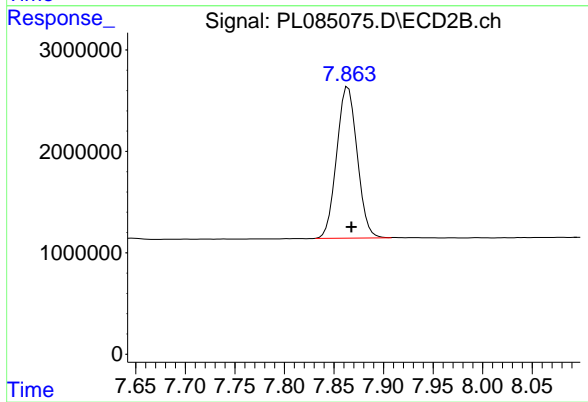
R.T.: 4.957 min
 Delta R.T.: -0.008 min
 Response: 124255
 Conc: 0.87 ng/ml



#28 Decachlorobiphenyl

R.T.: 9.027 min
Delta R.T.: 0.002 min
Response: 27720695
Conc: 17.04 ng/ml

Instrument :
ECD_L
ClientSampleId :



#28 Decachlorobiphenyl

R.T.: 7.864 min
Delta R.T.: -0.003 min
Response: 21488321
Conc: 17.23 ng/ml