

Data Path : Z:\pestpcbsrv\HPCHEM1\ECD\_L\Data\PL083018\  
 Data File : PL039605.D  
 Signal(s) : Signal #1: ECD1A.ch Signal #2: ECD2B.ch  
 Acq On : 30 Aug 2018 15:30  
 Operator : AJ\SJ  
 Sample : J4275-21  
 Misc :  
 ALS Vial : 9 Sample Multiplier: 1

Instrument :  
 ECD\_L  
 ClientSampleId :

Integration File signal 1: autoint1.e  
 Integration File signal 2: autoint2.e  
 Quant Time: Aug 31 02:07:05 2018  
 Quant Method : Z:\pestpcbsrv\HPCHEM1\ECD\_L\methods\PL081318.M  
 Quant Title : GC Extractables  
 QLast Update : Wed Aug 15 15:04:22 2018  
 Response via : Initial Calibration  
 Integrator: ChemStation

Volume Inj. : 2 µl  
 Signal #1 Phase : ZB-MR1 Signal #2 Phase: ZB-MR2  
 Signal #1 Info : 30M x 0.32mm x0.5 Signal #2 Info : 30M x 0.32mm x0.25µm

Compound	RT#1	RT#2	Resp#1	Resp#2	ng/ml	ng/ml
System Monitoring Compounds						
1) SA Tetrachlo...	3.302	3.905	82797931	34141898	11.844	12.735
28) SA Decachlor...	7.956	8.891	56034151	26944315	7.978	11.611 #
Target Compounds						
5) MB Aldrin	4.515	0.000	87363993	0	8.723	N.D. #
23) Chlordane-1	4.144	0.000	4782928	0	15.108	N.D. #
24) Chlordane-2	4.665	0.000	8666675	0	24.791	N.D. #

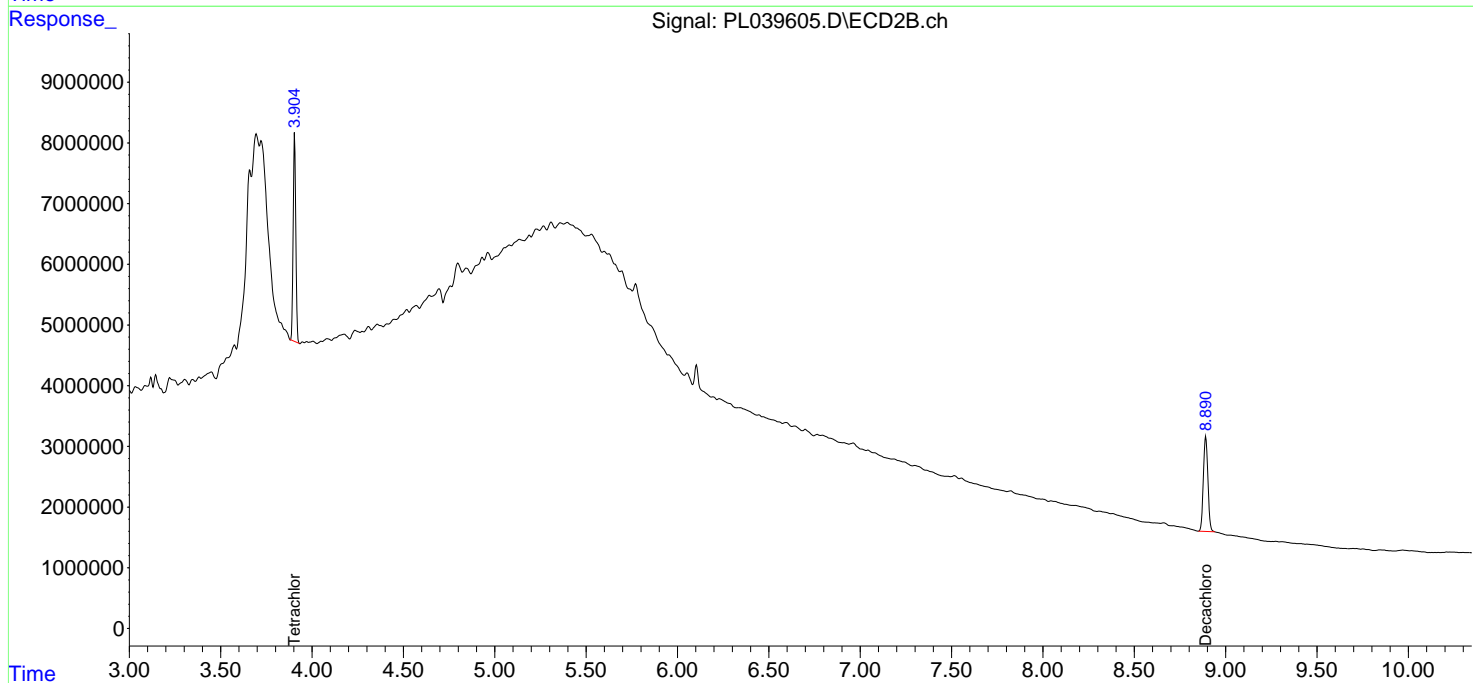
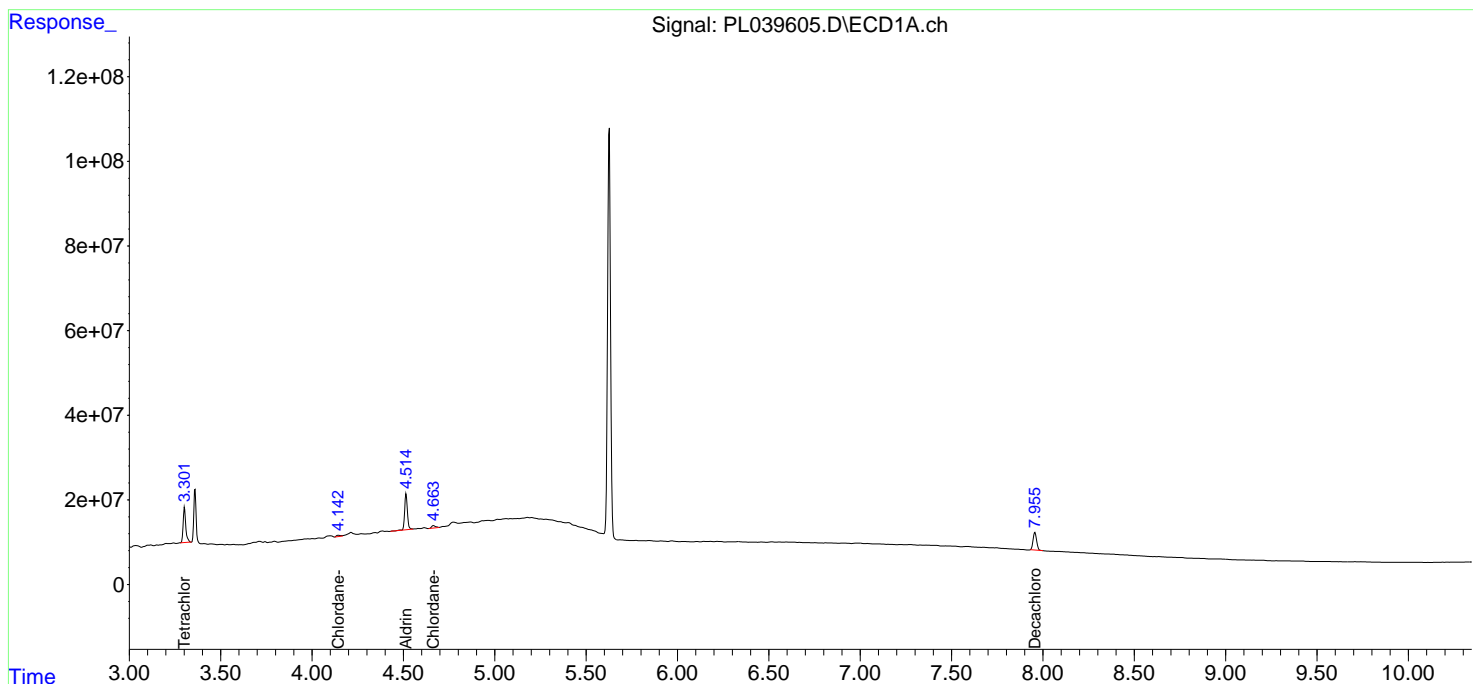
(f)=RT Delta > 1/2 Window (#)=Amounts differ by > 25% (m)=manual int.

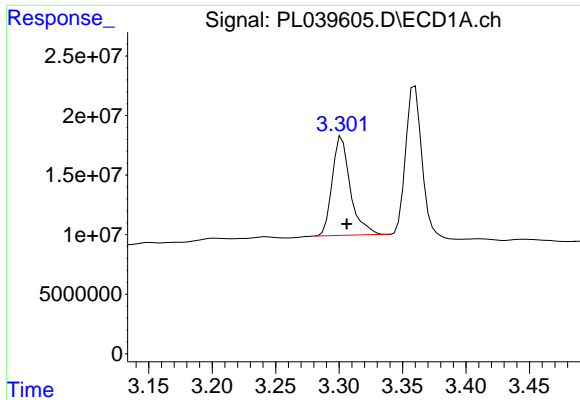
Data Path : Z:\pestpcbsrv\HPCHEM1\ECD\_L\Data\PL083018\  
 Data File : PL039605.D  
 Signal(s) : Signal #1: ECD1A.ch Signal #2: ECD2B.ch  
 Acq On : 30 Aug 2018 15:30  
 Operator : AJ\SJ  
 Sample : J4275-21  
 Misc :  
 ALS Vial : 9 Sample Multiplier: 1

Instrument :  
 ECD\_L  
 ClientSampled :

Integration File signal 1: autoint1.e  
 Integration File signal 2: autoint2.e  
 Quant Time: Aug 31 02:07:05 2018  
 Quant Method : Z:\pestpcbsrv\HPCHEM1\ECD\_L\methods\PL081318.M  
 Quant Title : GC Extractables  
 QLast Update : Wed Aug 15 15:04:22 2018  
 Response via : Initial Calibration  
 Integrator: ChemStation

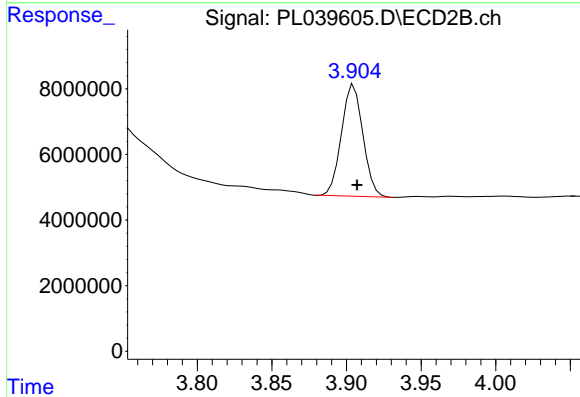
Volume Inj. : 2 µl  
 Signal #1 Phase : ZB-MR1 Signal #2 Phase: ZB-MR2  
 Signal #1 Info : 30M x 0.32mm x0.5 Signal #2 Info : 30M x 0.32mm x0.25µm



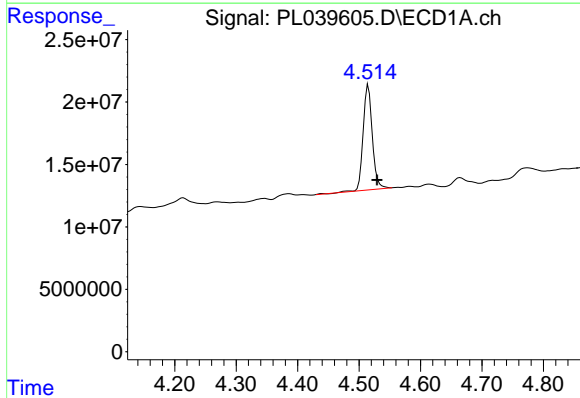


#1 Tetrachloro-m-xylene  
 R.T.: 3.302 min  
 Delta R.T.: -0.004 min  
 Response: 82797931  
 Conc: 11.84 ng/ml

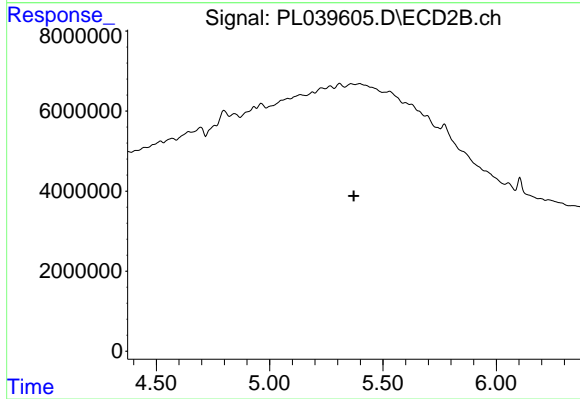
Instrument :  
 ECD\_L  
 ClientSampled :



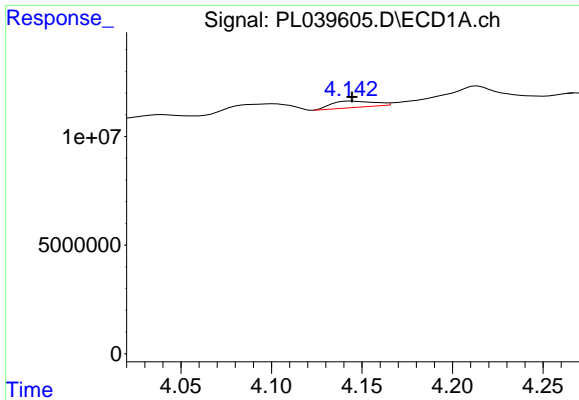
#1 Tetrachloro-m-xylene  
 R.T.: 3.905 min  
 Delta R.T.: -0.002 min  
 Response: 34141898  
 Conc: 12.74 ng/ml



#5 Aldrin  
 R.T.: 4.515 min  
 Delta R.T.: -0.014 min  
 Response: 87363993  
 Conc: 8.72 ng/ml

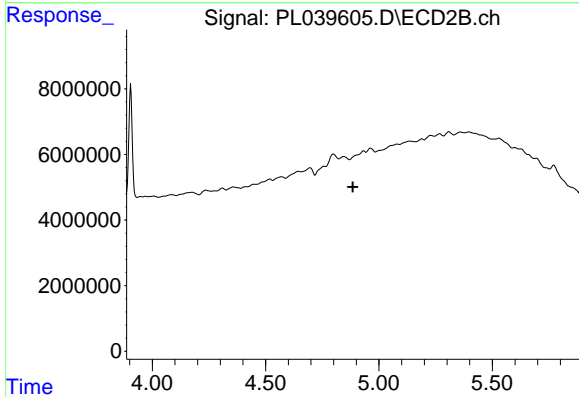


#5 Aldrin  
 R.T.: 0.000 min  
 Exp R.T. : 5.372 min  
 Response: 0  
 Conc: N.D.

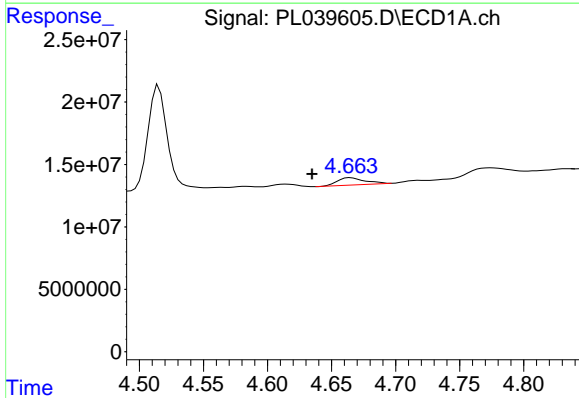


#23 Chlordane-1  
 R.T.: 4.144 min  
 Delta R.T.: 0.000 min  
 Response: 4782928  
 Conc: 15.11 ng/ml

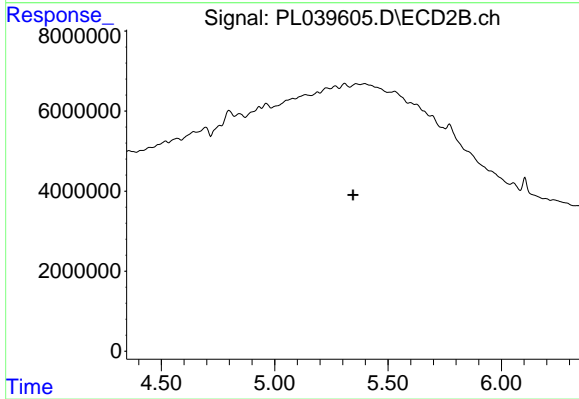
Instrument :  
 ECD\_L  
 ClientSampled :



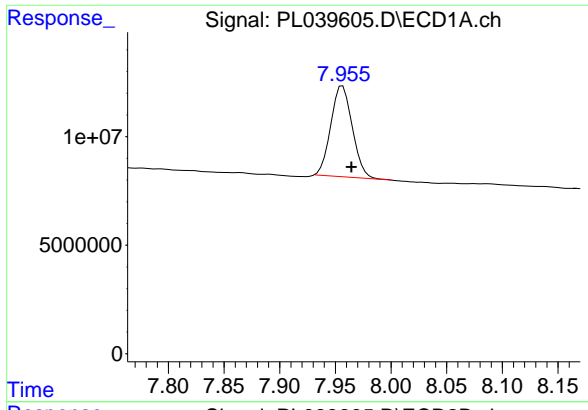
#23 Chlordane-1  
 R.T.: 0.000 min  
 Exp R.T. : 4.885 min  
 Response: 0  
 Conc: N.D.



#24 Chlordane-2  
 R.T.: 4.665 min  
 Delta R.T.: 0.030 min  
 Response: 8666675  
 Conc: 24.79 ng/ml



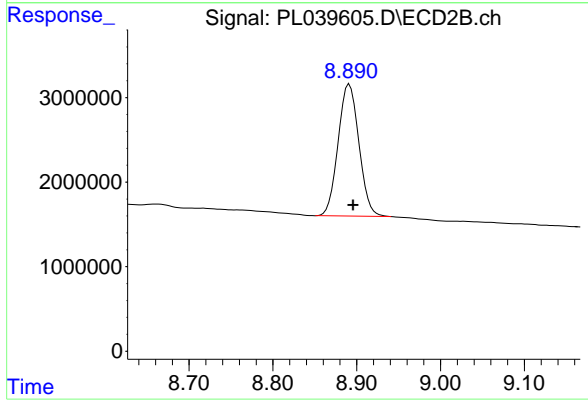
#24 Chlordane-2  
 R.T.: 0.000 min  
 Exp R.T. : 5.346 min  
 Response: 0  
 Conc: N.D.



#28 Decachlorobiphenyl

R.T.: 7.956 min  
Delta R.T.: -0.008 min  
Response: 56034151  
Conc: 7.98 ng/ml

Instrument :  
ECD\_L  
ClientSampleId :



#28 Decachlorobiphenyl

R.T.: 8.891 min  
Delta R.T.: -0.004 min  
Response: 26944315  
Conc: 11.61 ng/ml