

Data Path : Z:\pestpcbsrv\HPCHEM1\ECD_L\Data\PL083019\
 Data File : PL052100.D
 Signal(s) : Signal #1: ECD1A.ch Signal #2: ECD2B.ch
 Acq On : 31 Aug 2019 06:52
 Operator : SG\AJ
 Sample : PSTDCCC050
 Misc :
 ALS Vial : 4 Sample Multiplier: 1

Instrument :
 ECD_L
 ClientSampleId :
 PSTDCCC050

Integration File signal 1: autoint1.e
 Integration File signal 2: autoint2.e
 Quant Time: Aug 31 06:54:44 2019
 Quant Method : Z:\pestpcbsrv\HPCHEM1\ECD_L\methods\PL081919.M
 Quant Title : GC Extractables
 QLast Update : Mon Aug 19 18:03:07 2019
 Response via : Initial Calibration
 Integrator: ChemStation

Volume Inj. : 1 µl
 Signal #1 Phase : ZB-MR2 Signal #2 Phase: ZB-MR1
 Signal #1 Info : 30M x 0.32mm x0.2 Signal #2 Info : 30M x 0.32mm x0.5µm

	Compound	RT#1	RT#2	Resp#1	Resp#2	ng/ml	ng/ml

System Monitoring Compounds							
1)	SA Tetrachlo...	3.316	3.924	438.6E6	105.1E6	51.243	48.113
28)	SA Decachlor...	7.972	8.948	587.6E6	134.8E6	48.411	44.272
Target Compounds							
2)	A alpha-BHC	3.743	4.312	746.8E6	146.9E6	51.541	45.585
3)	MA gamma-BHC...	4.018	4.595	716.1E6	143.6E6	54.428	45.626
4)	MA Heptachlor	4.301	5.095	773.0E6	165.4E6	51.061	47.165
5)	MB Aldrin	4.538	5.397	753.3E6	161.0E6	52.131	49.087
6)	B beta-BHC	4.273	4.772	299.5E6	72902116	52.456	50.021
7)	B delta-BHC	4.465	4.985	778.4E6	157.2E6	52.349	50.230
8)	Heptachlo...	4.975	5.784	721.6E6	163.5E6	51.594	48.459
9)	A Endosulfan I	5.304	6.138	707.8E6	158.0E6	52.646	48.860
10)	B gamma-Chl...	5.196	6.017	771.1E6	170.0E6	51.640	46.570
11)	B alpha-Chl...	5.252	6.089	744.4E6	169.4E6	51.437	49.080
12)	B 4,4'-DDE	5.419	6.249	755.3E6	171.8E6	55.191	48.800
13)	MA Dieldrin	5.543	6.395	769.8E6	167.9E6	50.625	49.036
14)	MA Endrin	5.795	6.612	701.9E6	145.3E6	48.123	48.033
15)	B Endosulfa...	6.070	6.824	696.6E6	156.1E6	50.066	47.360
16)	A 4,4'-DDD	5.930	6.740	627.5E6	138.7E6	51.245	51.247
17)	MA 4,4'-DDT	6.163	7.036	611.0E6	134.9E6	47.914	46.092
18)	B Endrin al...	6.237	6.948	576.2E6	134.9E6	49.528	47.732
19)	B Endosulfa...	6.448	7.171	642.2E6	148.3E6	49.363	48.032
20)	A Methoxychlor	6.708	7.497	318.7E6	76145362	47.011	45.400
21)	B Endrin ke...	6.929	7.639	726.1E6	160.5E6	51.322	50.170
22)	Mirex	7.102	8.086	514.1E6	119.9E6	48.557	49.304
23)	Chlordane-1	4.188f	0.000	1648568	0	5.117	N.D. #
24)	Chlordane-2	0.000	5.397f	0	161.0E6	N.D.	1603.558 #
25)	Chlordane-3	5.196	6.017	771.1E6	170.0E6	593.899	381.626 #
26)	Chlordane-4	5.252	6.089	744.4E6	169.4E6	610.452	311.861 #
27)	Chlordane-5	6.070	6.874f	696.6E6	125039	1419.601	1.268 #

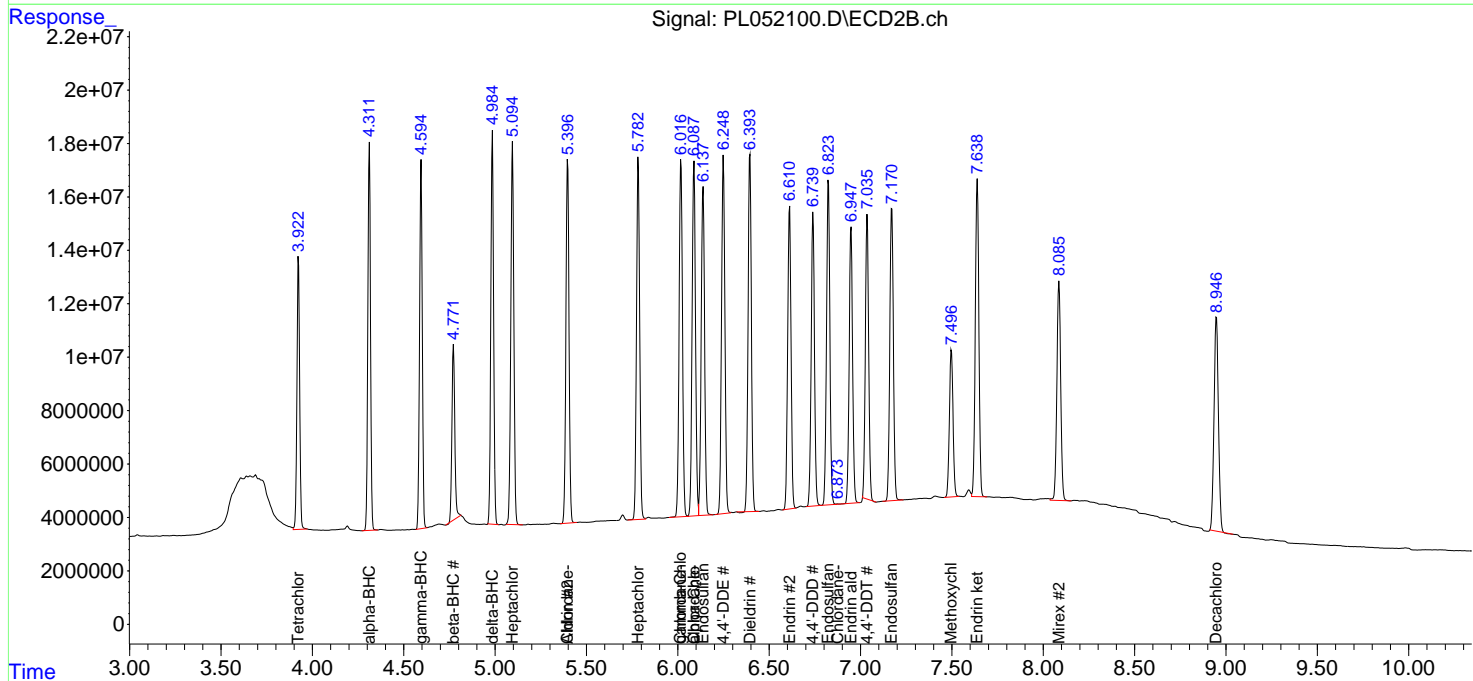
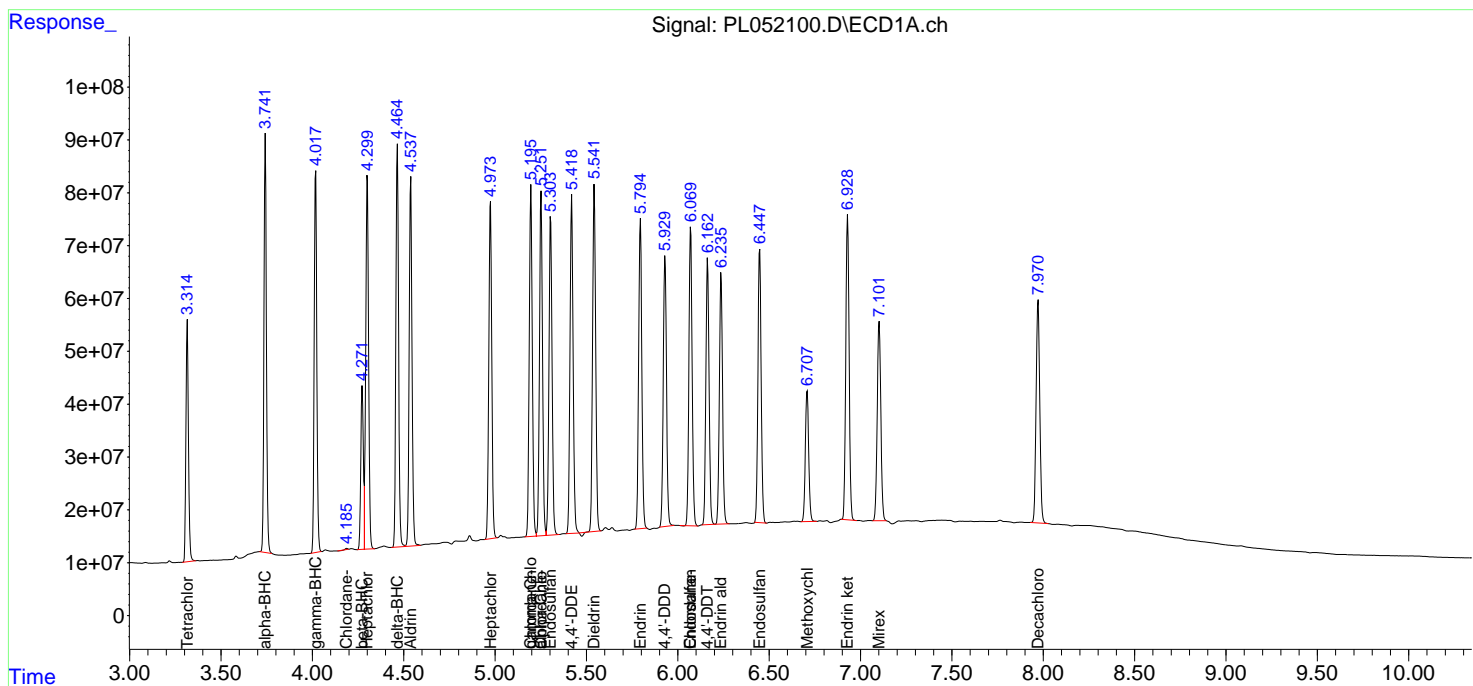
(f)=RT Delta > 1/2 Window (#)=Amounts differ by > 25% (m)=manual int.

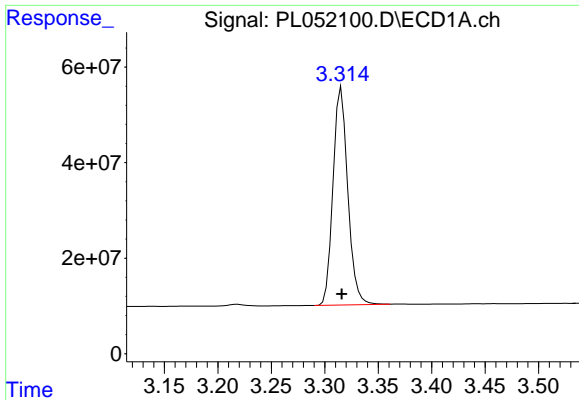
Data Path : Z:\pestpcbsrv\HPCHEM1\ECD_L\Data\PL083019\
 Data File : PL052100.D
 Signal(s) : Signal #1: ECD1A.ch Signal #2: ECD2B.ch
 Acq On : 31 Aug 2019 06:52
 Operator : SG\AJ
 Sample : PSTDCCC050
 Misc :
 ALS Vial : 4 Sample Multiplier: 1

Instrument :
 ECD_L
 ClientSampleId :
 PSTDCCC050

Integration File signal 1: autoint1.e
 Integration File signal 2: autoint2.e
 Quant Time: Aug 31 06:54:44 2019
 Quant Method : Z:\pestpcbsrv\HPCHEM1\ECD_L\methods\PL081919.M
 Quant Title : GC Extractables
 QLast Update : Mon Aug 19 18:03:07 2019
 Response via : Initial Calibration
 Integrator: ChemStation

Volume Inj. : 1 µl
 Signal #1 Phase : ZB-MR2 Signal #2 Phase: ZB-MR1
 Signal #1 Info : 30M x 0.32mm x0.2 Signal #2 Info : 30M x 0.32mm x0.5µm

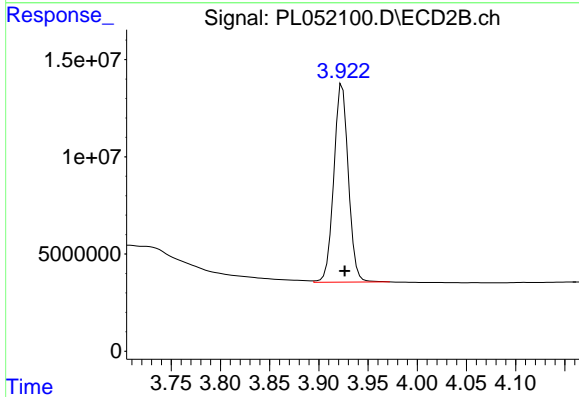




#1 Tetrachloro-m-xylene

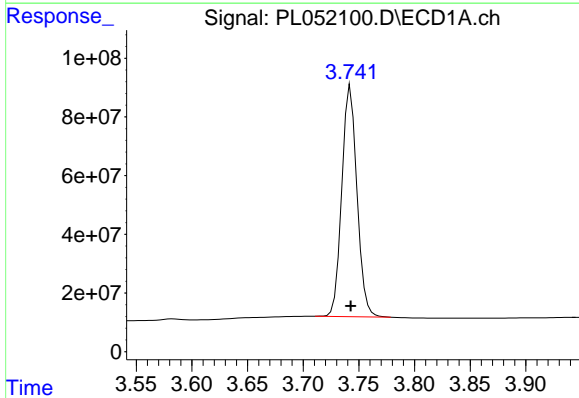
R.T.: 3.316 min
 Delta R.T.: 0.000 min
 Response: 438568676
 Conc: 51.24 ng/ml

Instrument :
 ECD_L
 ClientSampleId :
 PSTDCCC050



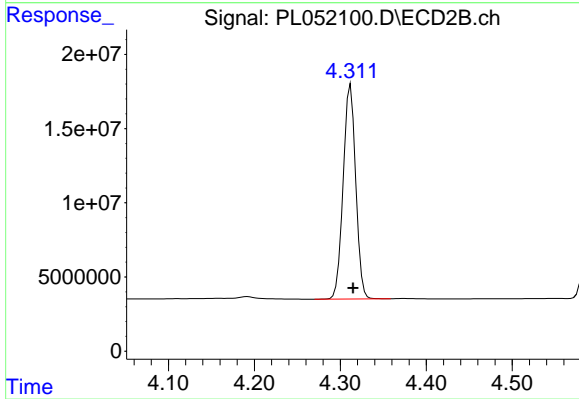
#1 Tetrachloro-m-xylene

R.T.: 3.924 min
 Delta R.T.: -0.003 min
 Response: 105118338
 Conc: 48.11 ng/ml



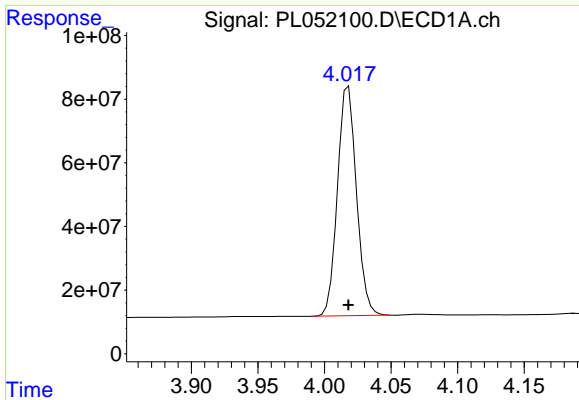
#2 alpha-BHC

R.T.: 3.743 min
 Delta R.T.: 0.000 min
 Response: 746812272
 Conc: 51.54 ng/ml



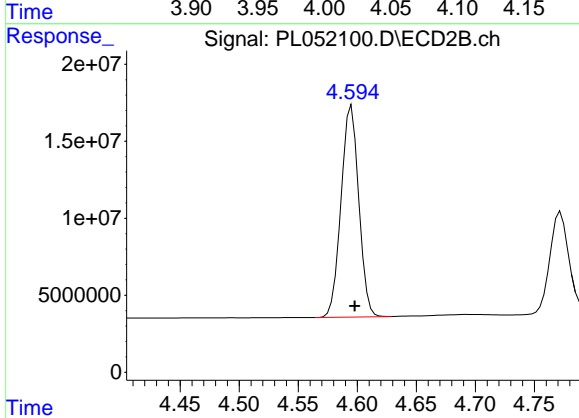
#2 alpha-BHC

R.T.: 4.312 min
 Delta R.T.: -0.003 min
 Response: 146892418
 Conc: 45.59 ng/ml

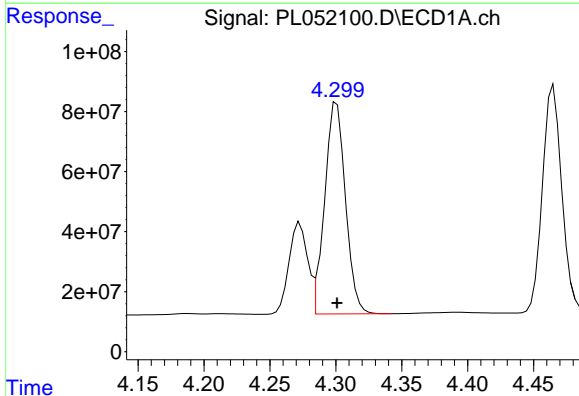


#3 gamma-BHC (Lindane)
 R.T.: 4.018 min
 Delta R.T.: 0.000 min
 Response: 716085822
 Conc: 54.43 ng/ml

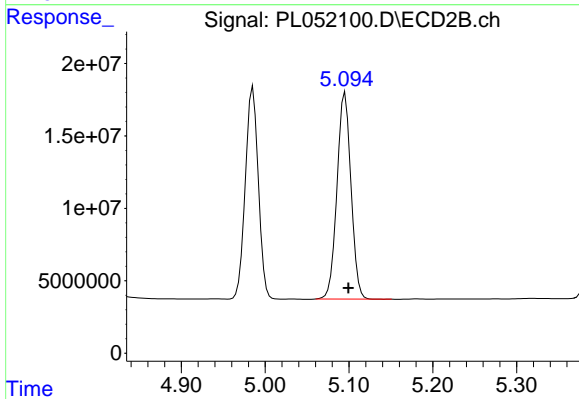
Instrument :
 ECD_L
 ClientSampleId :
 PSTDCCC050



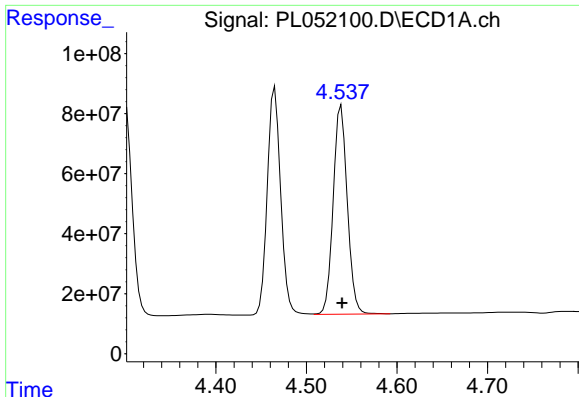
#3 gamma-BHC (Lindane)
 R.T.: 4.595 min
 Delta R.T.: -0.003 min
 Response: 143644610
 Conc: 45.63 ng/ml



#4 Heptachlor
 R.T.: 4.301 min
 Delta R.T.: 0.000 min
 Response: 772998124
 Conc: 51.06 ng/ml

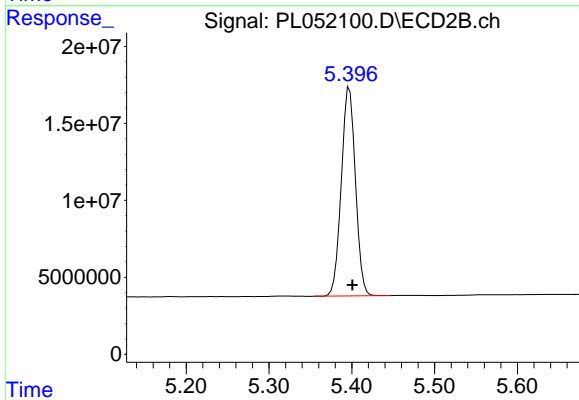


#4 Heptachlor
 R.T.: 5.095 min
 Delta R.T.: -0.004 min
 Response: 165404038
 Conc: 47.17 ng/ml

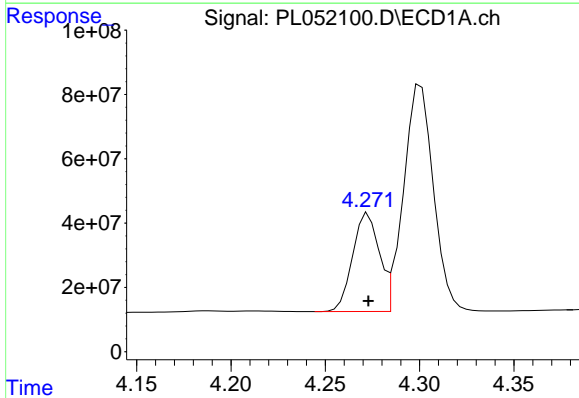


#5 Aldrin
 R.T.: 4.538 min
 Delta R.T.: 0.000 min
 Response: 753322924
 Conc: 52.13 ng/ml

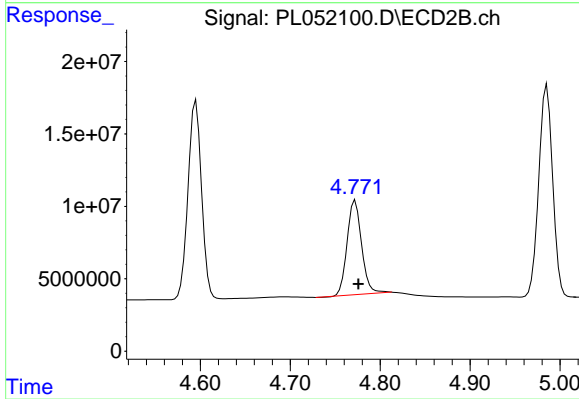
Instrument :
 ECD_L
 ClientSampled :
 PSTDCCC050



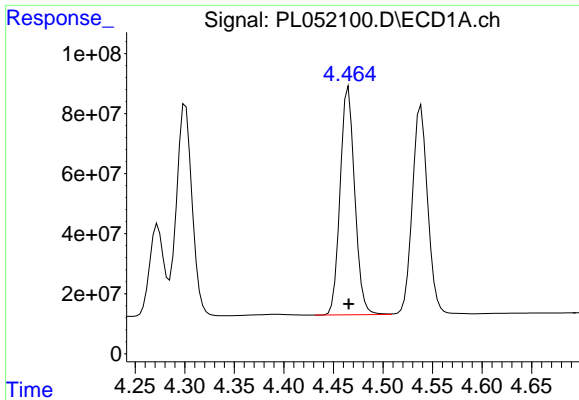
#5 Aldrin
 R.T.: 5.397 min
 Delta R.T.: -0.004 min
 Response: 160950106
 Conc: 49.09 ng/ml



#6 beta-BHC
 R.T.: 4.273 min
 Delta R.T.: 0.000 min
 Response: 299528110
 Conc: 52.46 ng/ml



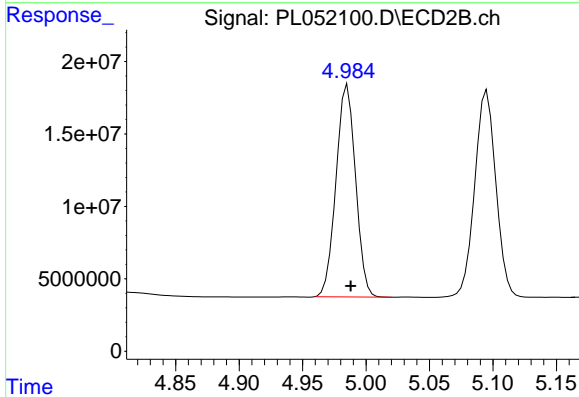
#6 beta-BHC
 R.T.: 4.772 min
 Delta R.T.: -0.003 min
 Response: 72902116
 Conc: 50.02 ng/ml



#7 delta-BHC

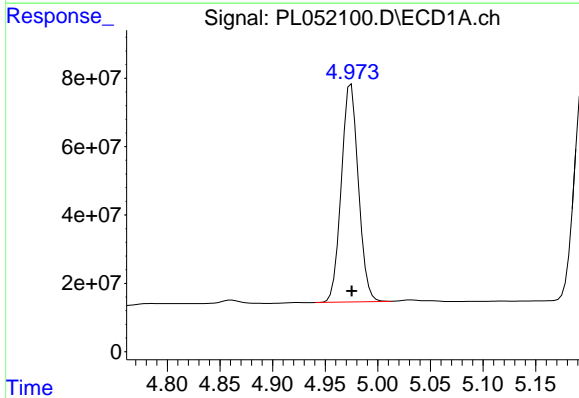
R.T.: 4.465 min
 Delta R.T.: 0.000 min
 Response: 778376493
 Conc: 52.35 ng/ml

Instrument :
 ECD_L
 ClientSampleId :
 PSTDCCC050



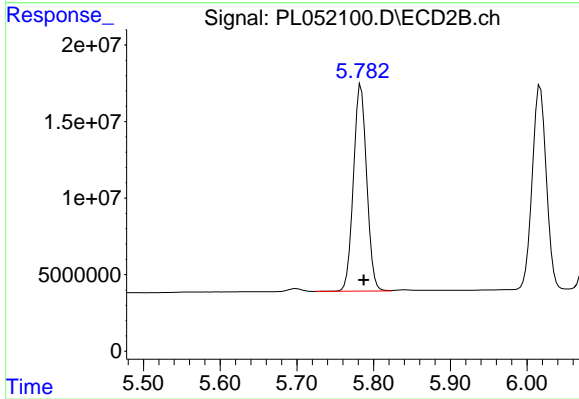
#7 delta-BHC

R.T.: 4.985 min
 Delta R.T.: -0.002 min
 Response: 157206238
 Conc: 50.23 ng/ml



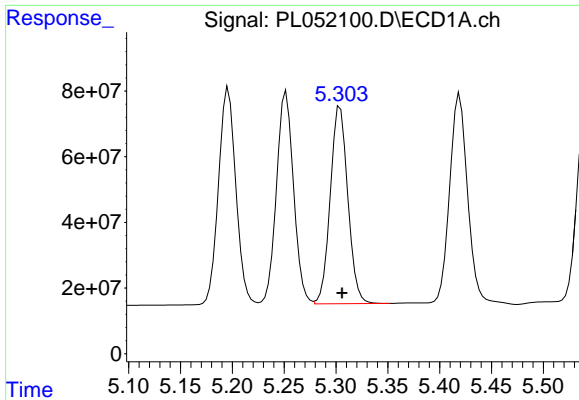
#8 Heptachlor epoxide

R.T.: 4.975 min
 Delta R.T.: 0.000 min
 Response: 721567988
 Conc: 51.59 ng/ml



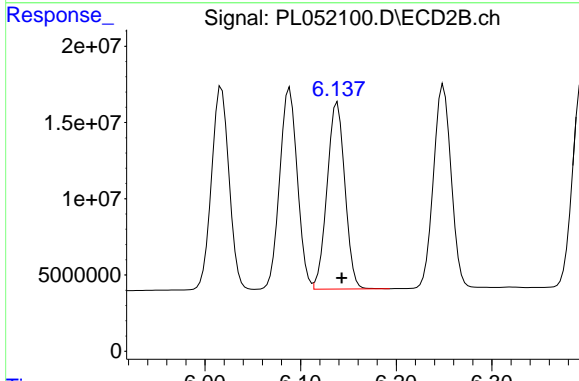
#8 Heptachlor epoxide

R.T.: 5.784 min
 Delta R.T.: -0.004 min
 Response: 163538427
 Conc: 48.46 ng/ml

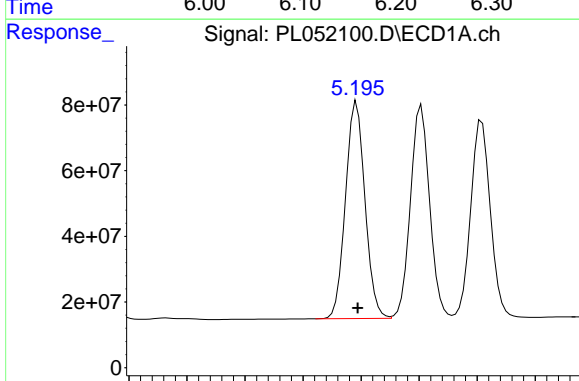


#9 Endosulfan I
 R.T.: 5.304 min
 Delta R.T.: -0.002 min
 Response: 707760717
 Conc: 52.65 ng/ml

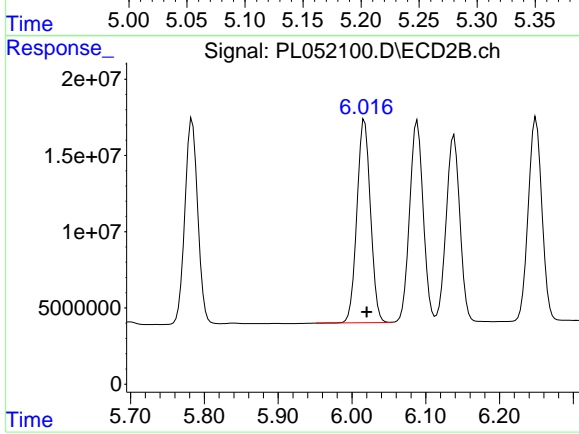
Instrument :
 ECD_L
 ClientSampleId :
 PSTDCCC050



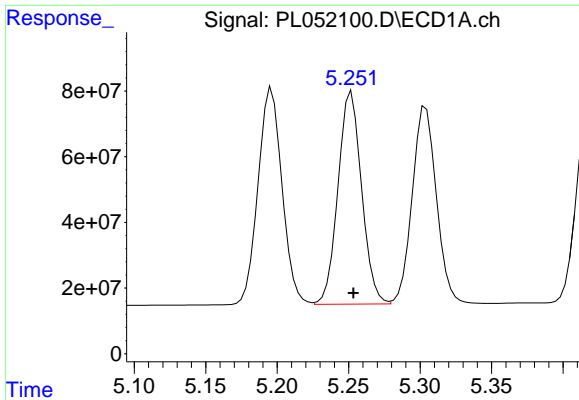
#9 Endosulfan I
 R.T.: 6.138 min
 Delta R.T.: -0.005 min
 Response: 157974565
 Conc: 48.86 ng/ml



#10 gamma-Chlordane
 R.T.: 5.196 min
 Delta R.T.: 0.000 min
 Response: 771083008
 Conc: 51.64 ng/ml

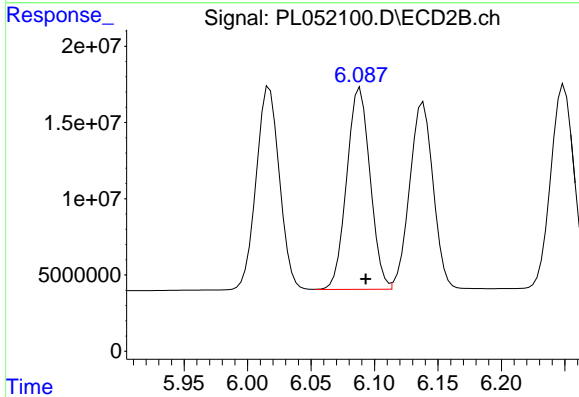


#10 gamma-Chlordane
 R.T.: 6.017 min
 Delta R.T.: -0.003 min
 Response: 170029530
 Conc: 46.57 ng/ml

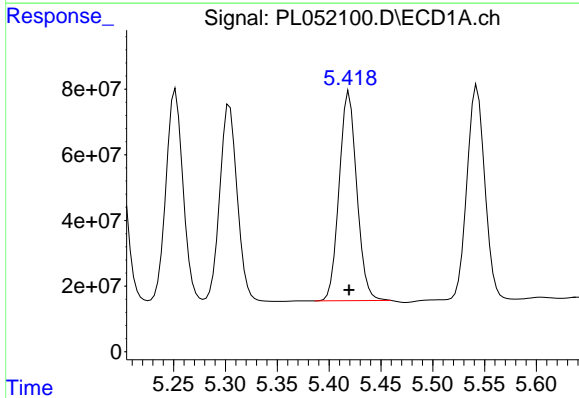


#11 alpha-Chlordane
 R.T.: 5.252 min
 Delta R.T.: -0.001 min
 Response: 744359086
 Conc: 51.44 ng/ml

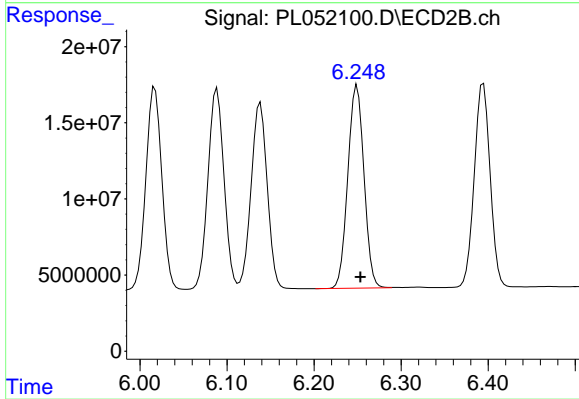
Instrument :
 ECD_L
 ClientSampleId :
 PSTDCCC050



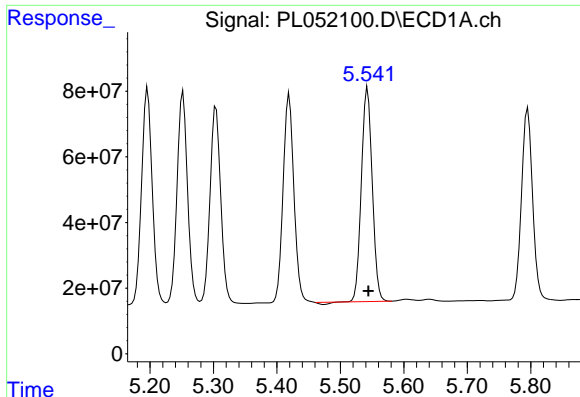
#11 alpha-Chlordane
 R.T.: 6.089 min
 Delta R.T.: -0.004 min
 Response: 169375444
 Conc: 49.08 ng/ml



#12 4,4'-DDE
 R.T.: 5.419 min
 Delta R.T.: 0.000 min
 Response: 755329106
 Conc: 55.19 ng/ml



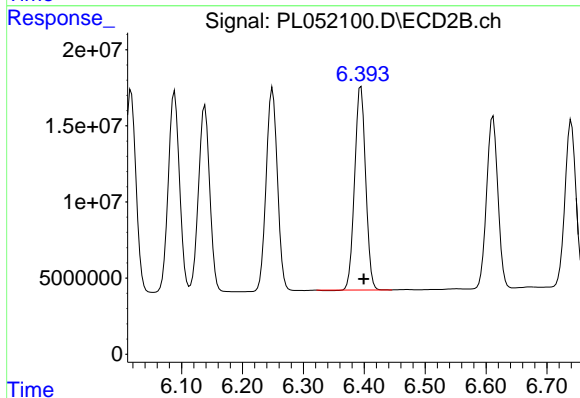
#12 4,4'-DDE
 R.T.: 6.249 min
 Delta R.T.: -0.004 min
 Response: 171779494
 Conc: 48.80 ng/ml



#13 Dieldrin

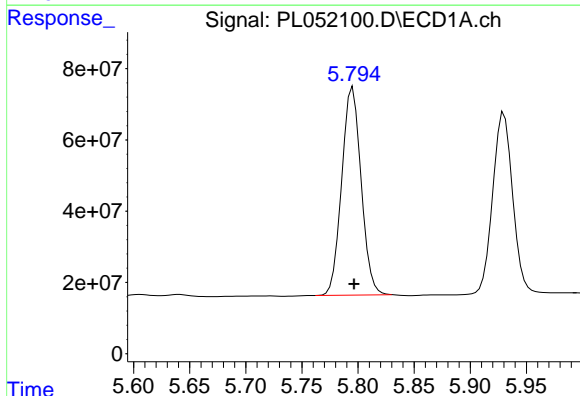
R.T.: 5.543 min
 Delta R.T.: -0.001 min
 Response: 769750656
 Conc: 50.63 ng/ml

Instrument :
 ECD_L
 ClientSampled :
 PSTDCCC050



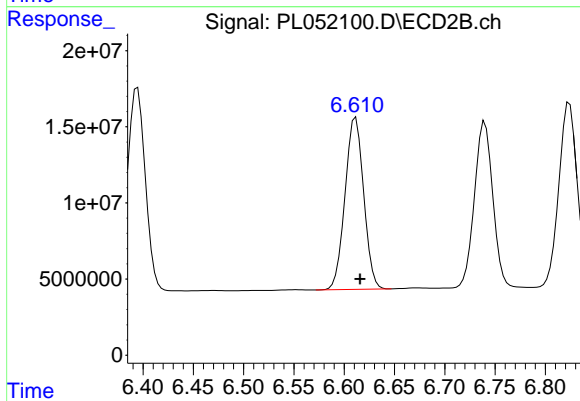
#13 Dieldrin

R.T.: 6.395 min
 Delta R.T.: -0.005 min
 Response: 167926521
 Conc: 49.04 ng/ml



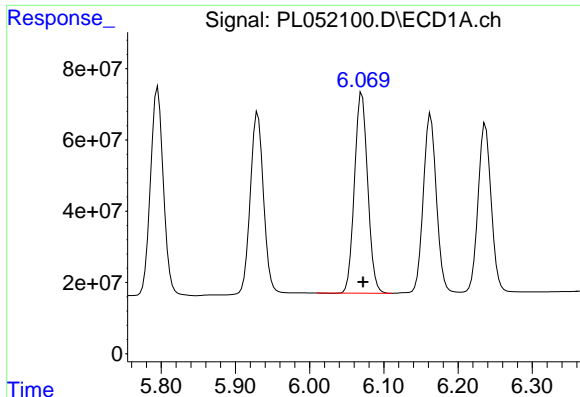
#14 Endrin

R.T.: 5.795 min
 Delta R.T.: -0.001 min
 Response: 701931438
 Conc: 48.12 ng/ml



#14 Endrin

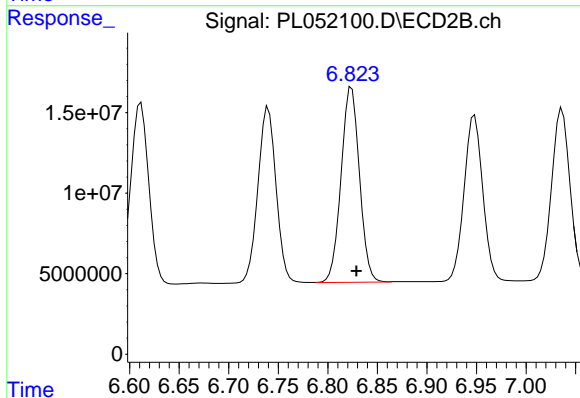
R.T.: 6.612 min
 Delta R.T.: -0.004 min
 Response: 145282671
 Conc: 48.03 ng/ml



#15 Endosulfan II

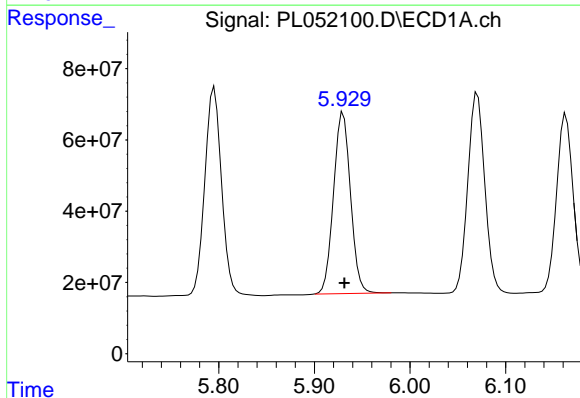
R.T.: 6.070 min
 Delta R.T.: -0.001 min
 Response: 696623150
 Conc: 50.07 ng/ml

Instrument :
 ECD_L
 ClientSampleId :
 PSTDCCC050



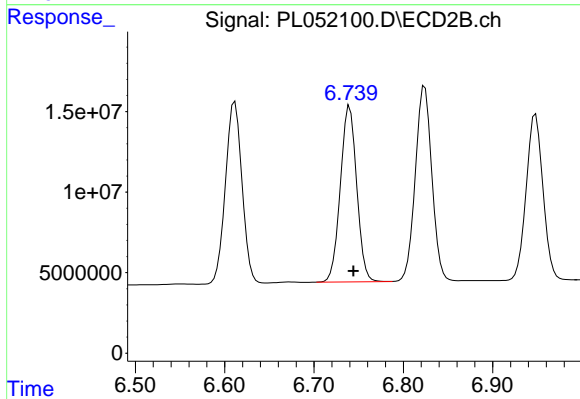
#15 Endosulfan II

R.T.: 6.824 min
 Delta R.T.: -0.005 min
 Response: 156100799
 Conc: 47.36 ng/ml



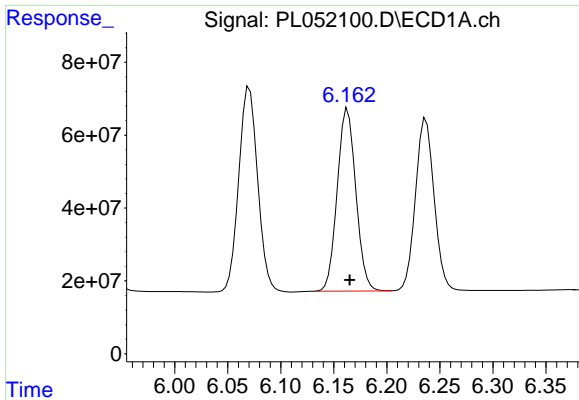
#16 4,4'-DDD

R.T.: 5.930 min
 Delta R.T.: -0.001 min
 Response: 627519842
 Conc: 51.24 ng/ml



#16 4,4'-DDD

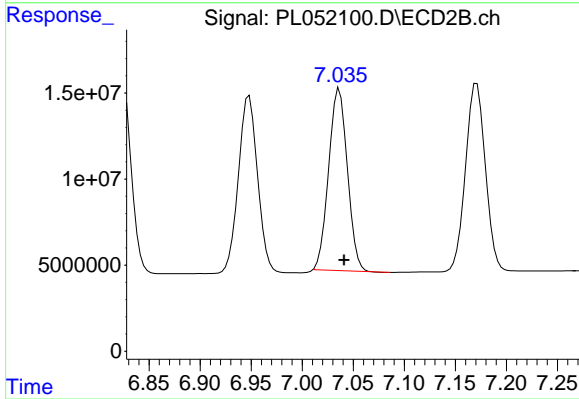
R.T.: 6.740 min
 Delta R.T.: -0.004 min
 Response: 138742742
 Conc: 51.25 ng/ml



#17 4,4'-DDT

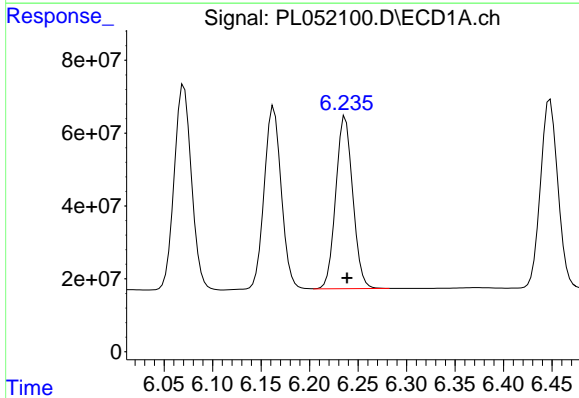
R.T.: 6.163 min
 Delta R.T.: -0.002 min
 Response: 610963099
 Conc: 47.91 ng/ml

Instrument :
 ECD_L
 ClientSampleId :
 PSTDCCC050



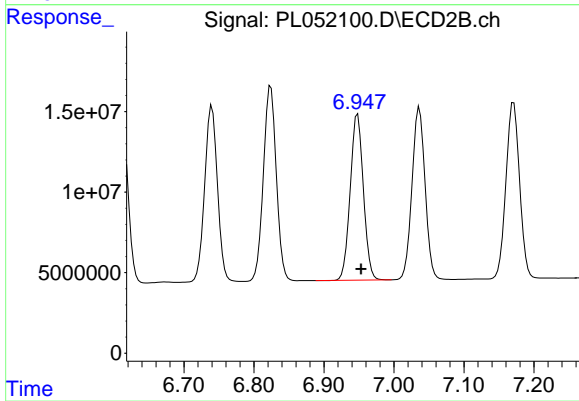
#17 4,4'-DDT

R.T.: 7.036 min
 Delta R.T.: -0.005 min
 Response: 134944182
 Conc: 46.09 ng/ml



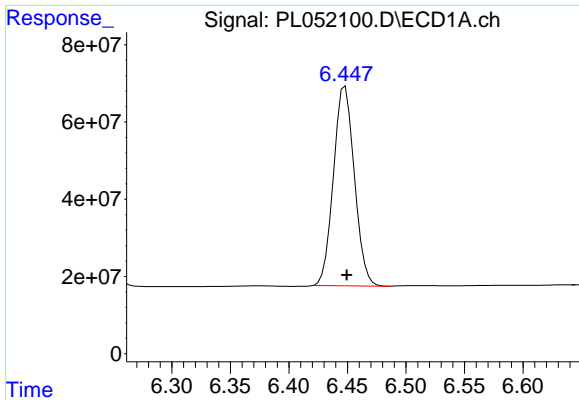
#18 Endrin aldehyde

R.T.: 6.237 min
 Delta R.T.: -0.002 min
 Response: 576168111
 Conc: 49.53 ng/ml



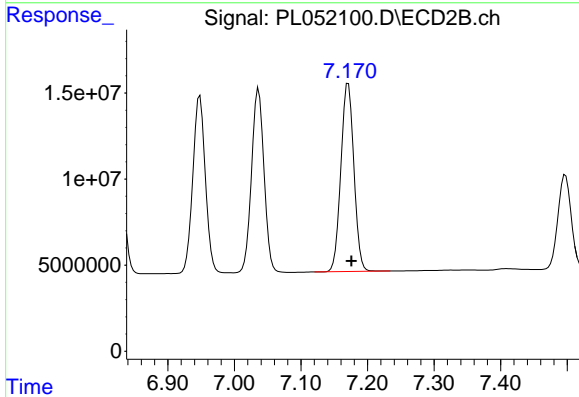
#18 Endrin aldehyde

R.T.: 6.948 min
 Delta R.T.: -0.005 min
 Response: 134901281
 Conc: 47.73 ng/ml

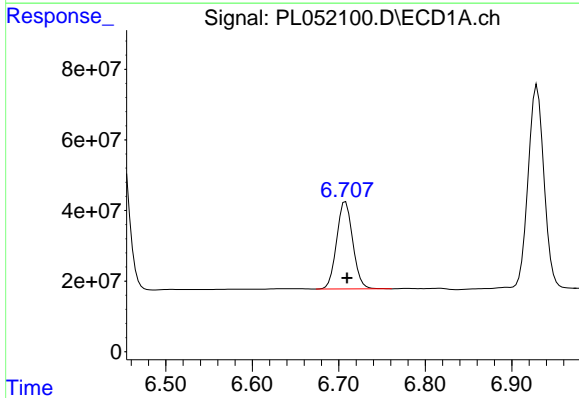


#19 Endosulfan Sulfate
 R.T.: 6.448 min
 Delta R.T.: -0.001 min
 Response: 642161126
 Conc: 49.36 ng/ml

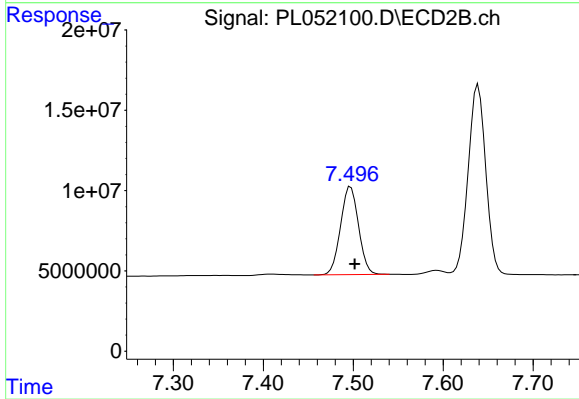
Instrument :
 ECD_L
 ClientSampleId :
 PSTDCCC050



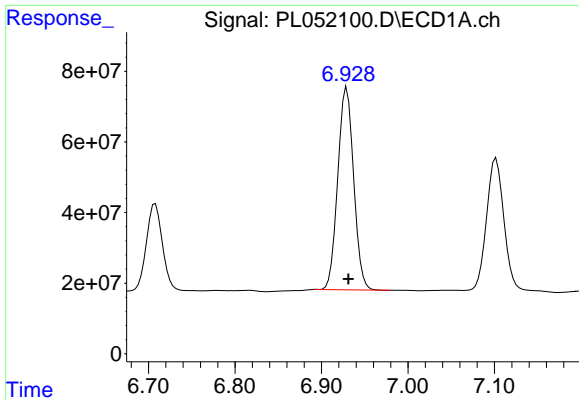
#19 Endosulfan Sulfate
 R.T.: 7.171 min
 Delta R.T.: -0.005 min
 Response: 148325572
 Conc: 48.03 ng/ml



#20 Methoxychlor
 R.T.: 6.708 min
 Delta R.T.: -0.002 min
 Response: 318723155
 Conc: 47.01 ng/ml

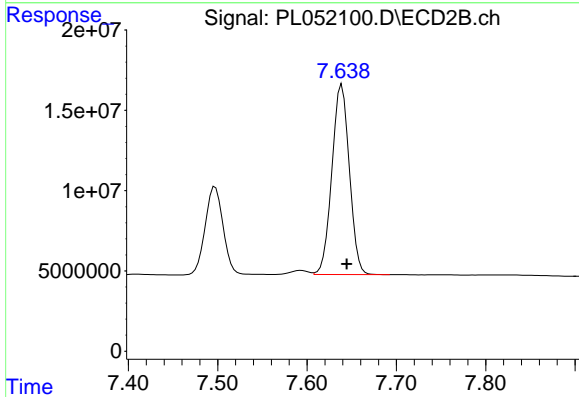


#20 Methoxychlor
 R.T.: 7.497 min
 Delta R.T.: -0.005 min
 Response: 76145362
 Conc: 45.40 ng/ml

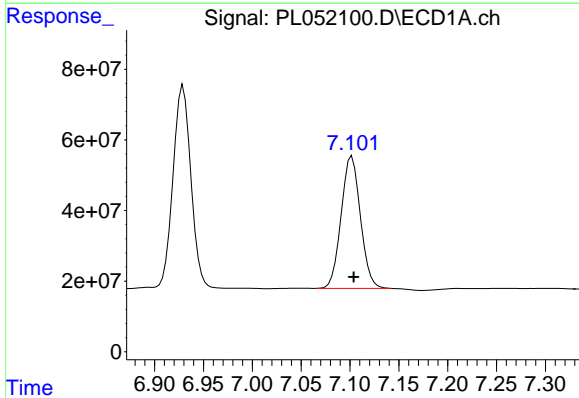


#21 Endrin ketone
 R.T.: 6.929 min
 Delta R.T.: -0.002 min
 Response: 726054737
 Conc: 51.32 ng/ml

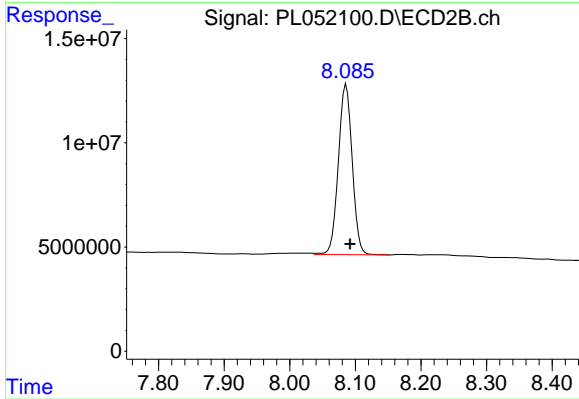
Instrument :
 ECD_L
 ClientSampleId :
 PSTDCCC050



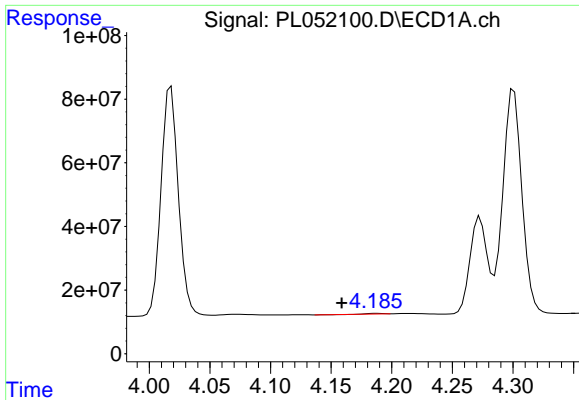
#21 Endrin ketone
 R.T.: 7.639 min
 Delta R.T.: -0.005 min
 Response: 160520301
 Conc: 50.17 ng/ml



#22 Mirex
 R.T.: 7.102 min
 Delta R.T.: -0.002 min
 Response: 514087862
 Conc: 48.56 ng/ml

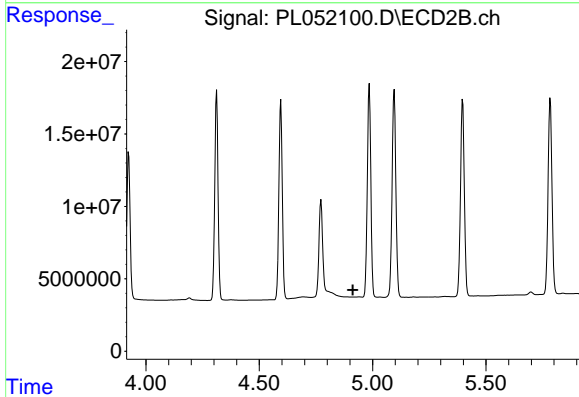


#22 Mirex
 R.T.: 8.086 min
 Delta R.T.: -0.006 min
 Response: 119943358
 Conc: 49.30 ng/ml

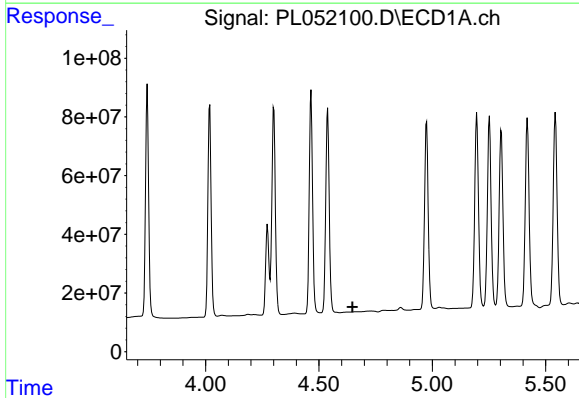


#23 Chlordane-1
 R.T.: 4.188 min
 Delta R.T.: 0.029 min
 Response: 1648568
 Conc: 5.12 ng/ml

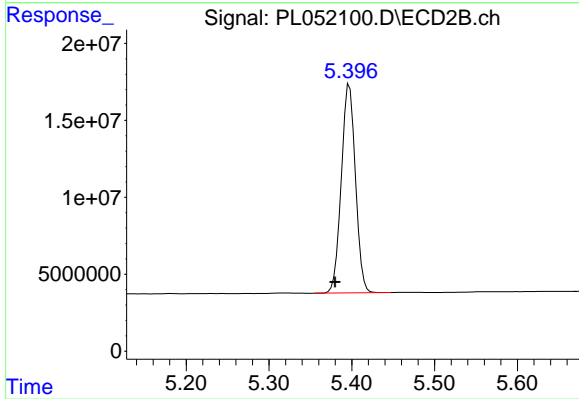
Instrument :
 ECD_L
 ClientSampleId :
 PSTDCCC050



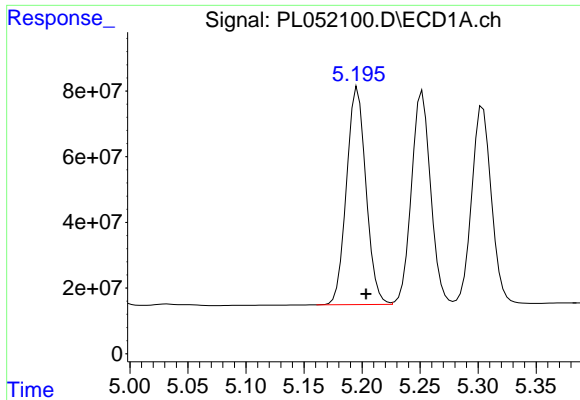
#23 Chlordane-1
 R.T.: 0.000 min
 Exp R.T. : 4.913 min
 Response: 0
 Conc: N.D.



#24 Chlordane-2
 R.T.: 0.000 min
 Exp R.T. : 4.649 min
 Response: 0
 Conc: N.D.

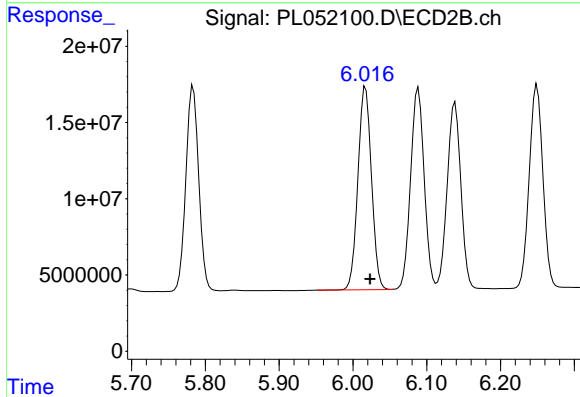


#24 Chlordane-2
 R.T.: 5.397 min
 Delta R.T.: 0.017 min
 Response: 160950106
 Conc: 1603.56 ng/ml

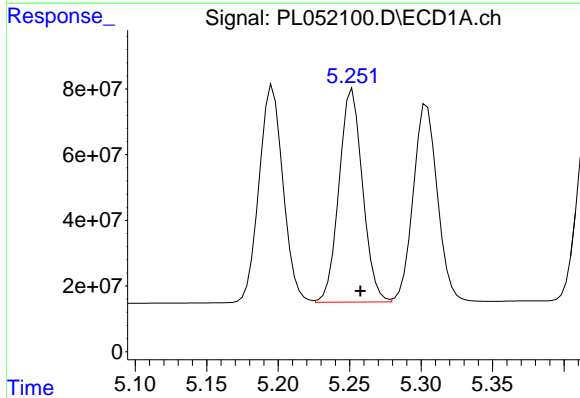


#25 Chlordane-3
 R.T.: 5.196 min
 Delta R.T.: -0.007 min
 Response: 771083008
 Conc: 593.90 ng/ml

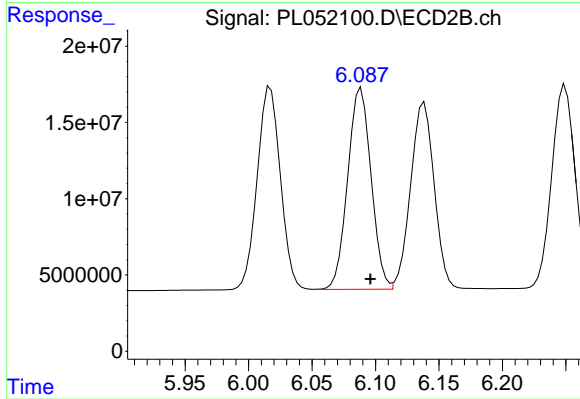
Instrument :
 ECD_L
 ClientSampleId :
 PSTDCCC050



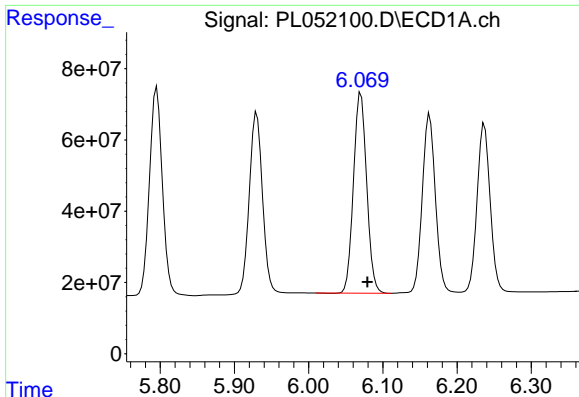
#25 Chlordane-3
 R.T.: 6.017 min
 Delta R.T.: -0.006 min
 Response: 170029530
 Conc: 381.63 ng/ml



#26 Chlordane-4
 R.T.: 5.252 min
 Delta R.T.: -0.005 min
 Response: 744359086
 Conc: 610.45 ng/ml



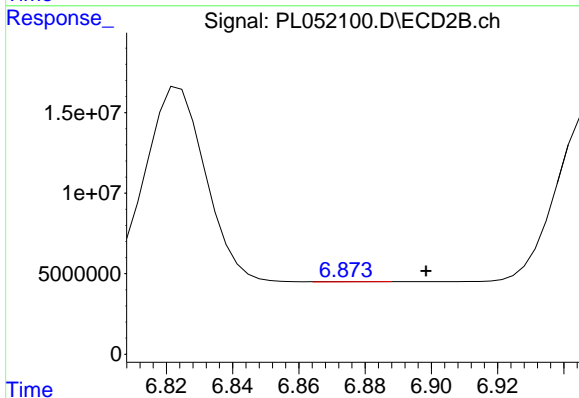
#26 Chlordane-4
 R.T.: 6.089 min
 Delta R.T.: -0.007 min
 Response: 169375444
 Conc: 311.86 ng/ml



#27 Chlordane-5

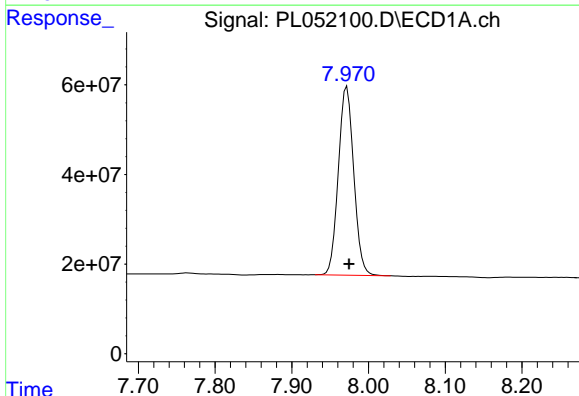
R.T.: 6.070 min
 Delta R.T.: -0.008 min
 Response: 696623150
 Conc: 1419.60 ng/ml

Instrument :
 ECD_L
 ClientSampleId :
 PSTDCCC050



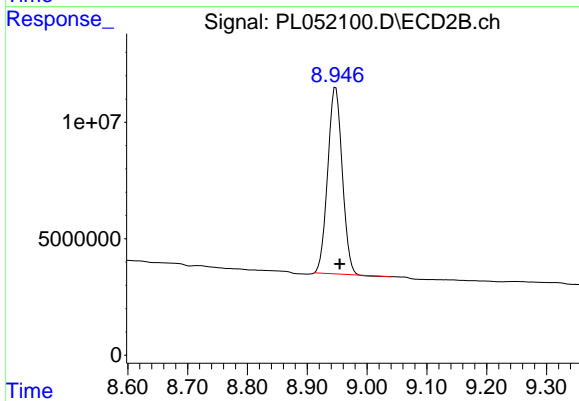
#27 Chlordane-5

R.T.: 6.874 min
 Delta R.T.: -0.024 min
 Response: 125039
 Conc: 1.27 ng/ml



#28 Decachlorobiphenyl

R.T.: 7.972 min
 Delta R.T.: -0.003 min
 Response: 587606545
 Conc: 48.41 ng/ml



#28 Decachlorobiphenyl

R.T.: 8.948 min
 Delta R.T.: -0.007 min
 Response: 134758144
 Conc: 44.27 ng/ml