

Data Path : Z:\pestpcbsrv\HPCHEM1\ECD_L\Data\PL083023\
 Data File : PL085086.D
 Signal(s) : Signal #1: ECD1A.ch Signal #2: ECD2B.ch
 Acq On : 30 Aug 2023 13:59
 Operator : AR\AJ
 Sample : 04210-01
 Misc :
 ALS Vial : 7 Sample Multiplier: 1

Instrument :
 ECD_L
 ClientSampleId :
 TR-04-082923

Integration File signal 1: autoint1.e
 Integration File signal 2: autoint2.e
 Quant Time: Aug 30 21:15:48 2023
 Quant Method : Z:\pestpcbsrv\HPCHEM1\ECD_L\methods\PL080323.M
 Quant Title : GC Extractables
 QLast Update : Thu Aug 03 16:21:43 2023
 Response via : Initial Calibration
 Integrator: ChemStation

Volume Inj. : 1 µl
 Signal #1 Phase : ZB-MR2 Signal #2 Phase: ZB-MR1
 Signal #1 Info : 30M x 0.32mm x0.2 Signal #2 Info : 30M x 0.32mm x0.5µm

Compound	RT#1	RT#2	Resp#1	Resp#2	ng/ml	ng/ml

System Monitoring Compounds						
1) SA Tetrachlo...	3.487	2.687	23615983	12404905	10.164	11.408
28) SA Decachlor...	9.041	7.870	19666382	13099570	12.087	10.507
Target Compounds						
17) MA 4,4'-DDT	6.994	5.973	609185	430125	0.325	0.371

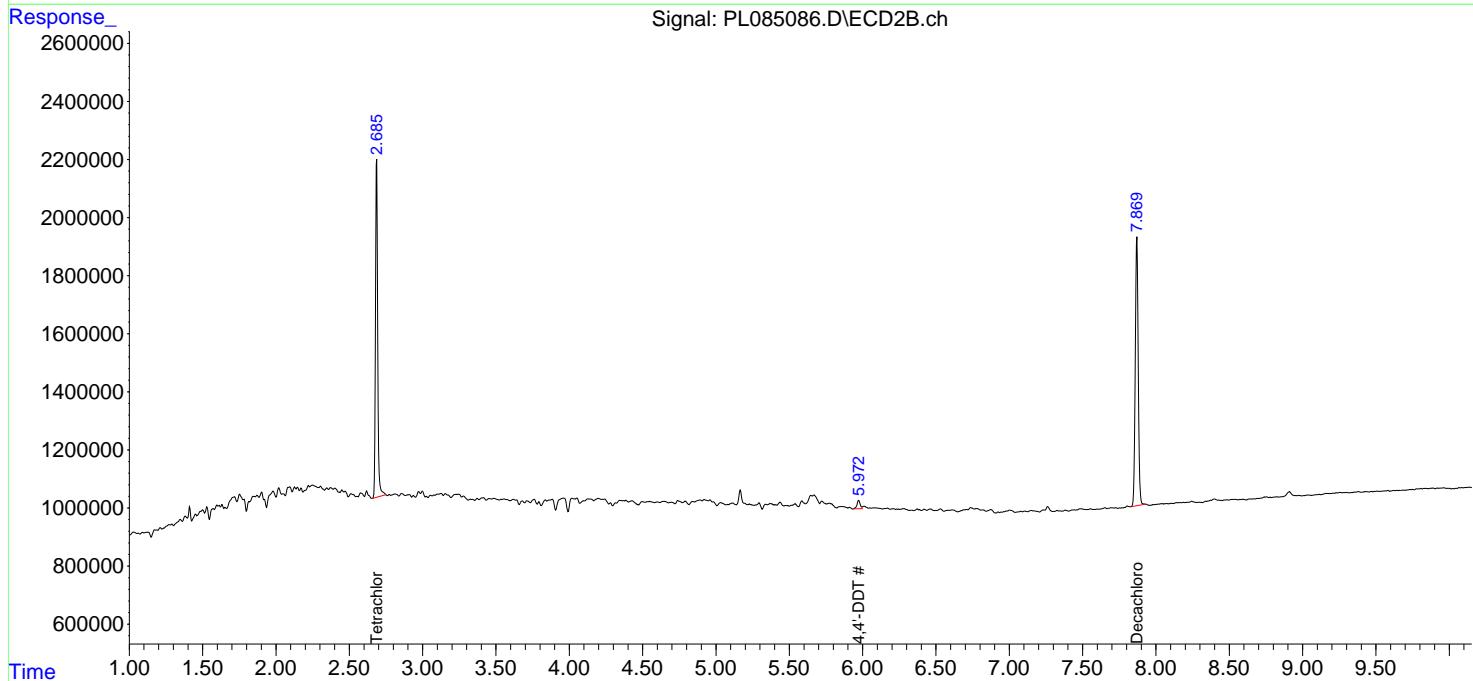
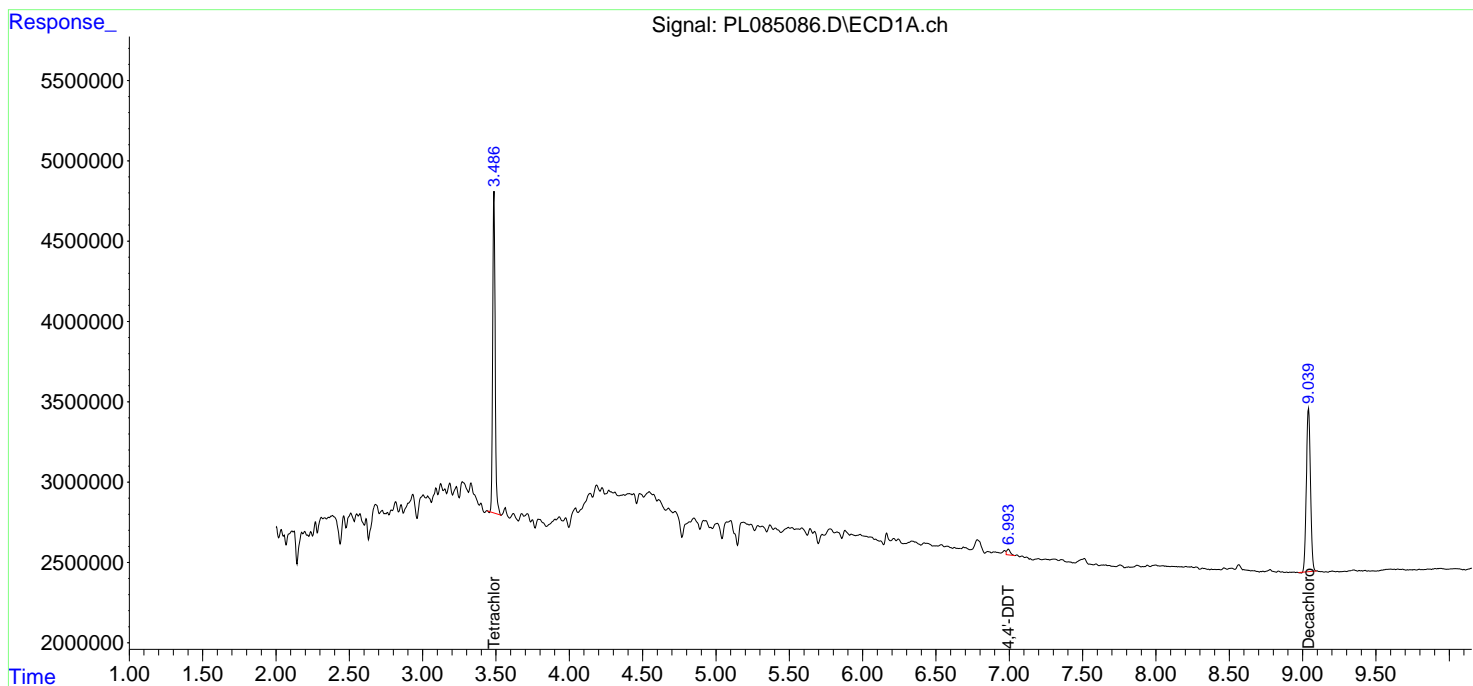
(f)=RT Delta > 1/2 Window (#)=Amounts differ by > 25% (m)=manual int.

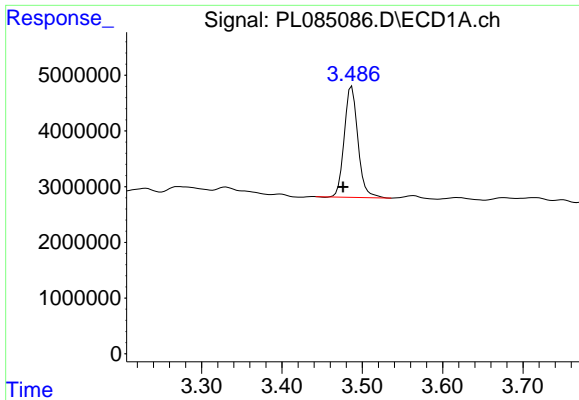
Data Path : Z:\pestpcbsrv\HPCHEM1\ECD_L\Data\PL083023\
 Data File : PL085086.D
 Signal(s) : Signal #1: ECD1A.ch Signal #2: ECD2B.ch
 Acq On : 30 Aug 2023 13:59
 Operator : AR\AJ
 Sample : 04210-01
 Misc :
 ALS Vial : 7 Sample Multiplier: 1

Instrument :
 ECD_L
 ClientSampleId :
 TR-04-082923

Integration File signal 1: autoint1.e
 Integration File signal 2: autoint2.e
 Quant Time: Aug 30 21:15:48 2023
 Quant Method : Z:\pestpcbsrv\HPCHEM1\ECD_L\methods\PL080323.M
 Quant Title : GC Extractables
 QLast Update : Thu Aug 03 16:21:43 2023
 Response via : Initial Calibration
 Integrator: ChemStation

Volume Inj. : 1 µl
 Signal #1 Phase : ZB-MR2 Signal #2 Phase: ZB-MR1
 Signal #1 Info : 30M x 0.32mm x0.2 Signal #2 Info : 30M x 0.32mm x0.5µm

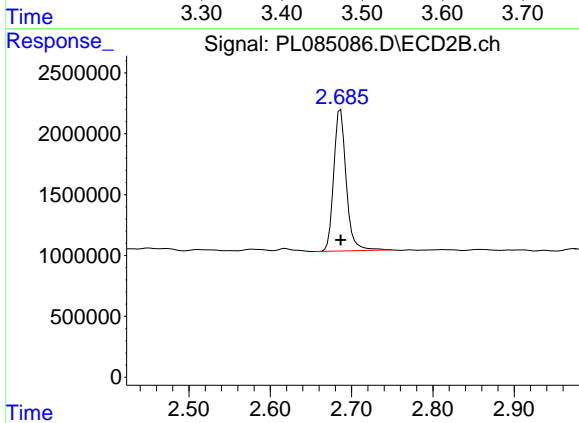




#1 Tetrachloro-m-xylene

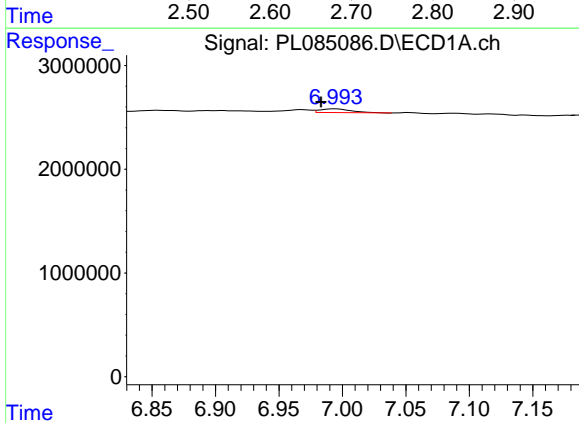
R.T.: 3.487 min
 Delta R.T.: 0.011 min
 Response: 23615983
 Conc: 10.16 ng/ml

Instrument :
 ECD_L
 ClientSampleId :
 TR-04-082923



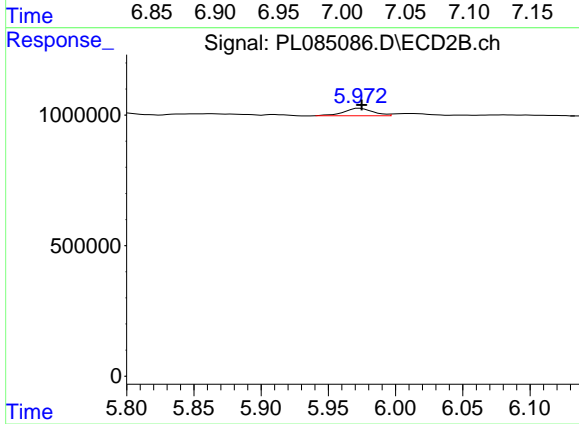
#1 Tetrachloro-m-xylene

R.T.: 2.687 min
 Delta R.T.: 0.000 min
 Response: 12404905
 Conc: 11.41 ng/ml



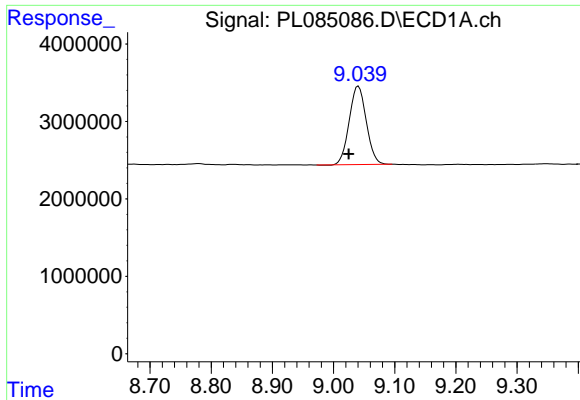
#17 4,4'-DDT

R.T.: 6.994 min
 Delta R.T.: 0.011 min
 Response: 609185
 Conc: 0.33 ng/ml



#17 4,4'-DDT

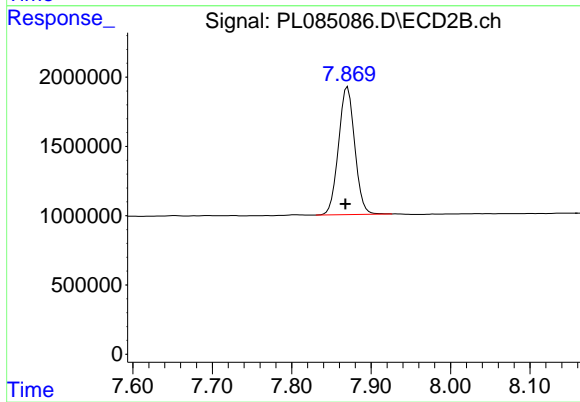
R.T.: 5.973 min
 Delta R.T.: -0.001 min
 Response: 430125
 Conc: 0.37 ng/ml



#28 Decachlorobiphenyl

R.T.: 9.041 min
Delta R.T.: 0.016 min
Response: 19666382
Conc: 12.09 ng/ml

Instrument :
ECD_L
ClientSampleId :
TR-04-082923



#28 Decachlorobiphenyl

R.T.: 7.870 min
Delta R.T.: 0.003 min
Response: 13099570
Conc: 10.51 ng/ml