

Data Path : Z:\pestpcbsrv\HPCHEM1\ECD\_L\Data\PL083119\  
 Data File : PL052108.D  
 Signal(s) : Signal #1: ECD1A.ch Signal #2: ECD2B.ch  
 Acq On : 31 Aug 2019 12:35  
 Operator : SG\AJ  
 Sample : I.BLK  
 Misc :  
 ALS Vial : 2 Sample Multiplier: 1

Integration File signal 1: autoint1.e  
 Integration File signal 2: autoint2.e  
 Quant Time: Aug 31 22:38:48 2019  
 Quant Method : Z:\pestpcbsrv\HPCHEM1\ECD\_L\methods\PL081919.M  
 Quant Title : GC Extractables  
 QLast Update : Mon Aug 19 18:03:07 2019  
 Response via : Initial Calibration  
 Integrator: ChemStation

Volume Inj. : 1 µl  
 Signal #1 Phase : ZB-MR2 Signal #2 Phase: ZB-MR1  
 Signal #1 Info : 30M x 0.32mm x0.2 Signal #2 Info : 30M x 0.32mm x0.5µm

Compound	RT#1	RT#2	Resp#1	Resp#2	ng/ml	ng/ml
----------	------	------	--------	--------	-------	-------

-----  
 System Monitoring Compounds

1) SA Tetrachlo...	3.314	3.923	245.8E6	60612611	28.722	27.743
28) SA Decachlor...	7.972	8.947	319.4E6	73070344	26.316	24.006

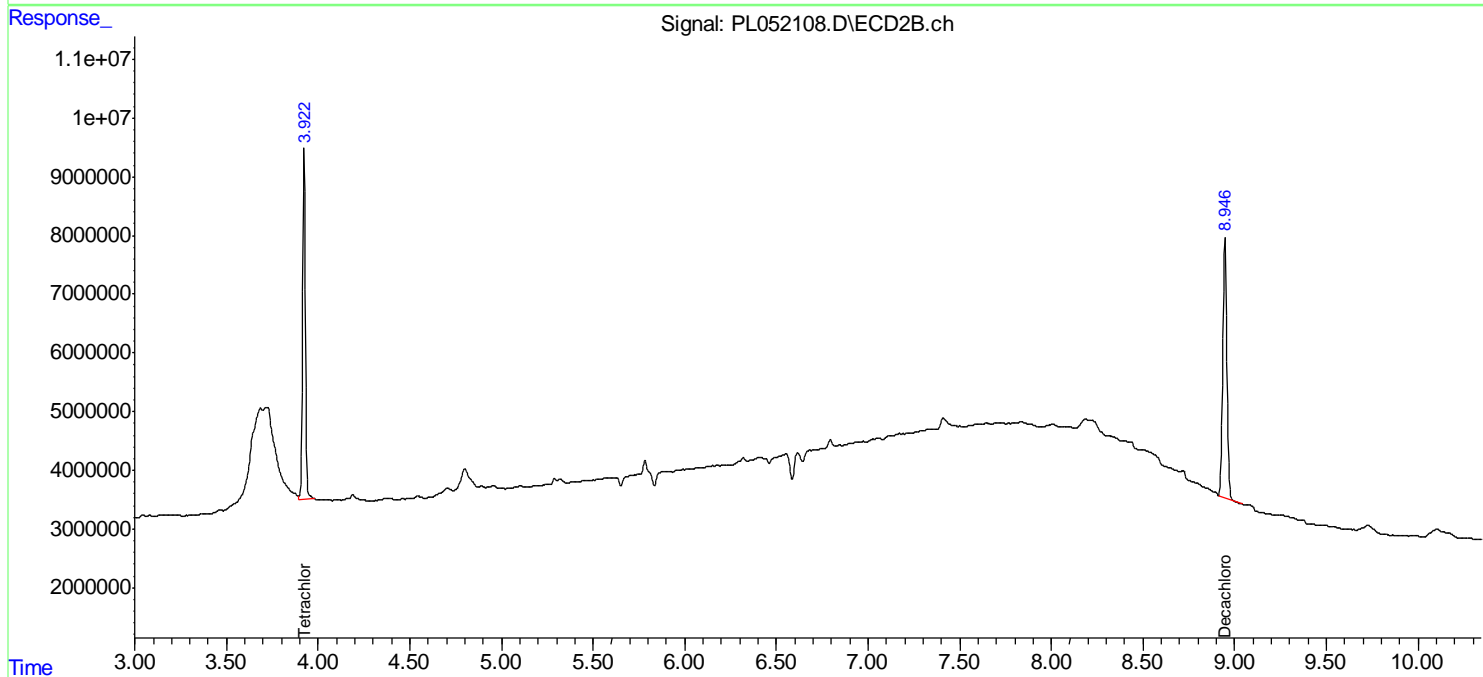
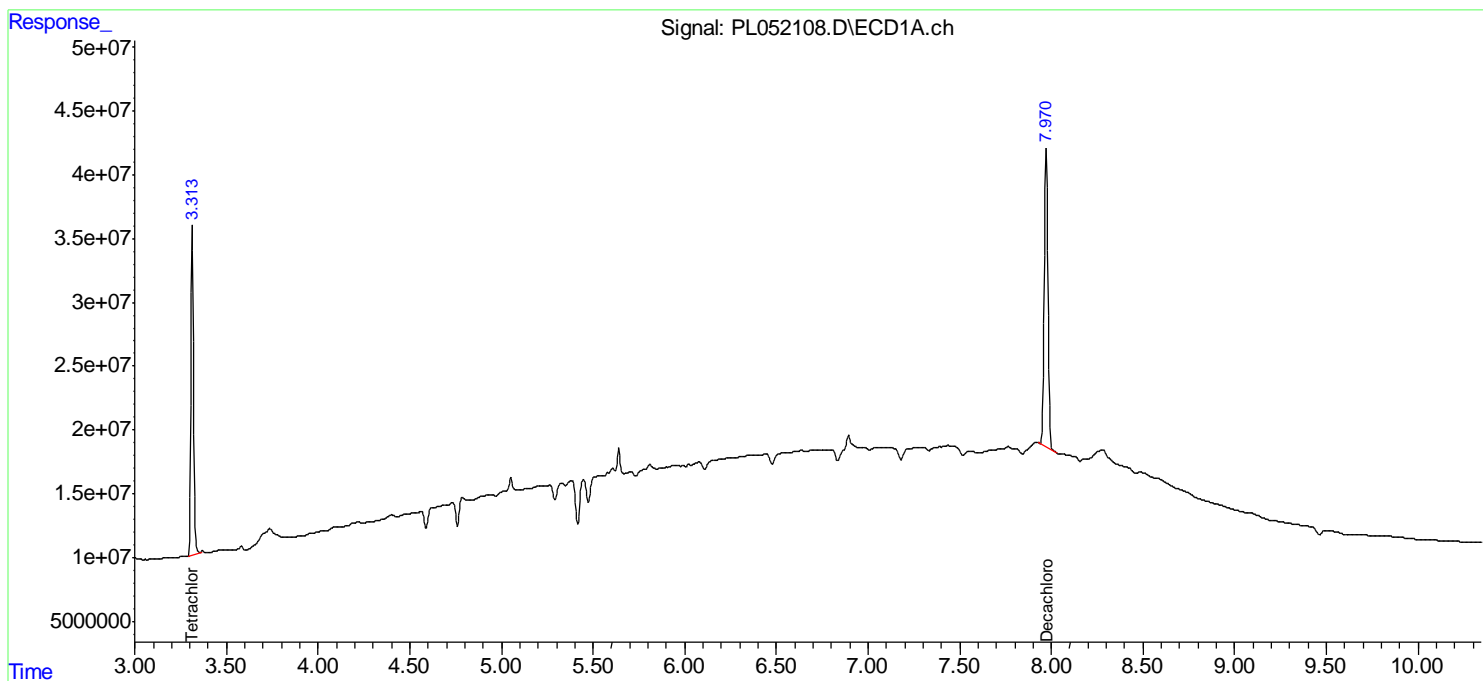
Target Compounds  
 -----

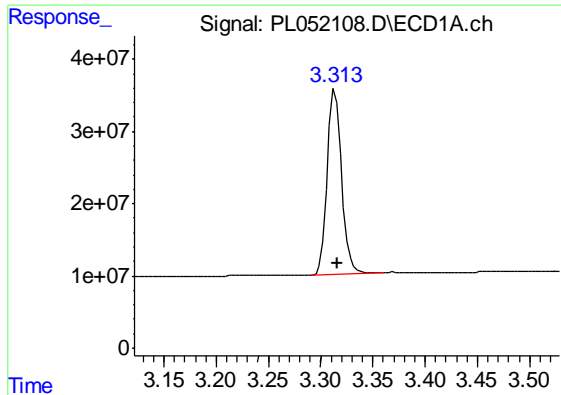
(f)=RT Delta > 1/2 Window (#)=Amounts differ by > 25% (m)=manual int.

Data Path : Z:\pestpcbsrv\HPCHEM1\ECD\_L\Data\PL083119\  
 Data File : PL052108.D  
 Signal(s) : Signal #1: ECD1A.ch Signal #2: ECD2B.ch  
 Acq On : 31 Aug 2019 12:35  
 Operator : SG\AJ  
 Sample : I.BLK  
 Misc :  
 ALS Vial : 2 Sample Multiplier: 1

Integration File signal 1: autoint1.e  
 Integration File signal 2: autoint2.e  
 Quant Time: Aug 31 22:38:48 2019  
 Quant Method : Z:\pestpcbsrv\HPCHEM1\ECD\_L\methods\PL081919.M  
 Quant Title : GC Extractables  
 QLast Update : Mon Aug 19 18:03:07 2019  
 Response via : Initial Calibration  
 Integrator: ChemStation

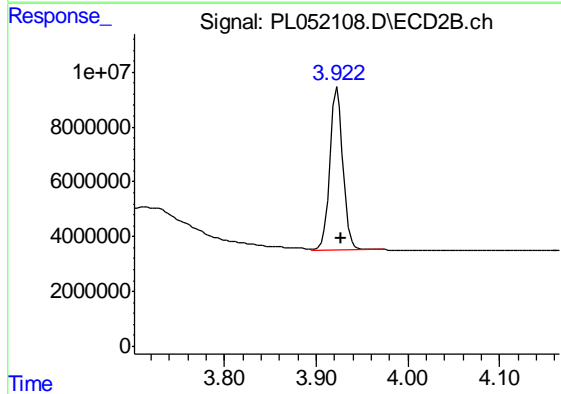
Volume Inj. : 1 µl  
 Signal #1 Phase : ZB-MR2 Signal #2 Phase: ZB-MR1  
 Signal #1 Info : 30M x 0.32mm x0.2 Signal #2 Info : 30M x 0.32mm x0.5µm





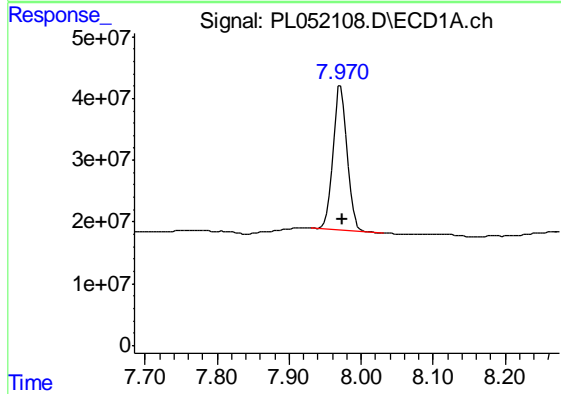
#1 Tetrachloro-m-xylene

R.T.: 3.314 min  
 Delta R.T.: -0.002 min  
 Response: 245817723  
 Conc: 28.72 ng/ml



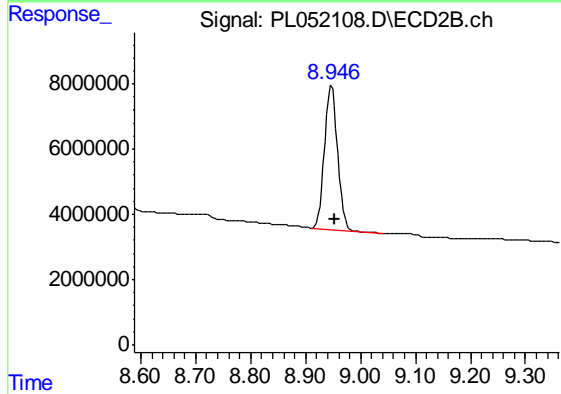
#1 Tetrachloro-m-xylene

R.T.: 3.923 min  
 Delta R.T.: -0.003 min  
 Response: 60612611  
 Conc: 27.74 ng/ml



#28 Decachlorobiphenyl

R.T.: 7.972 min  
 Delta R.T.: -0.003 min  
 Response: 319413337  
 Conc: 26.32 ng/ml



#28 Decachlorobiphenyl

R.T.: 8.947 min  
 Delta R.T.: -0.007 min  
 Response: 73070344  
 Conc: 24.01 ng/ml