

Data Path : Z:\pestpcbsrv\HPCHEM1\ECD_L\Data\PL083119\
 Data File : PL052111.D
 Signal(s) : Signal #1: ECD1A.ch Signal #2: ECD2B.ch
 Acq On : 31 Aug 2019 13:41
 Operator : SG\AJ
 Sample : PB122669BS
 Misc :
 ALS Vial : 5 Sample Multiplier: 1

Integration File signal 1: autoint1.e
 Integration File signal 2: autoint2.e
 Quant Time: Aug 31 22:39:24 2019
 Quant Method : Z:\pestpcbsrv\HPCHEM1\ECD_L\methods\PL081919.M
 Quant Title : GC Extractables
 QLast Update : Mon Aug 19 18:03:07 2019
 Response via : Initial Calibration
 Integrator: ChemStation

Volume Inj. : 1 µl
 Signal #1 Phase : ZB-MR2 Signal #2 Phase: ZB-MR1
 Signal #1 Info : 30M x 0.32mm x0.2 Signal #2 Info : 30M x 0.32mm x0.5µm

	Compound	RT#1	RT#2	Resp#1	Resp#2	ng/ml	ng/ml

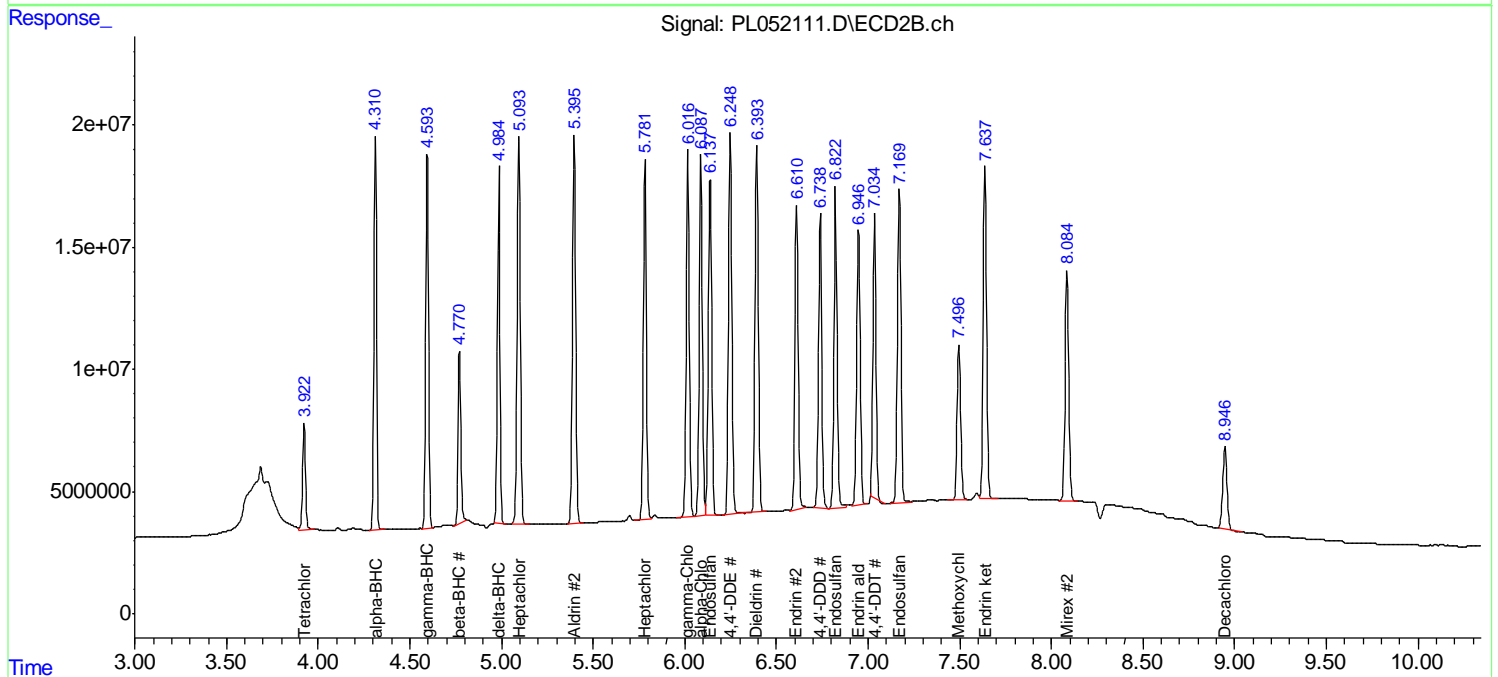
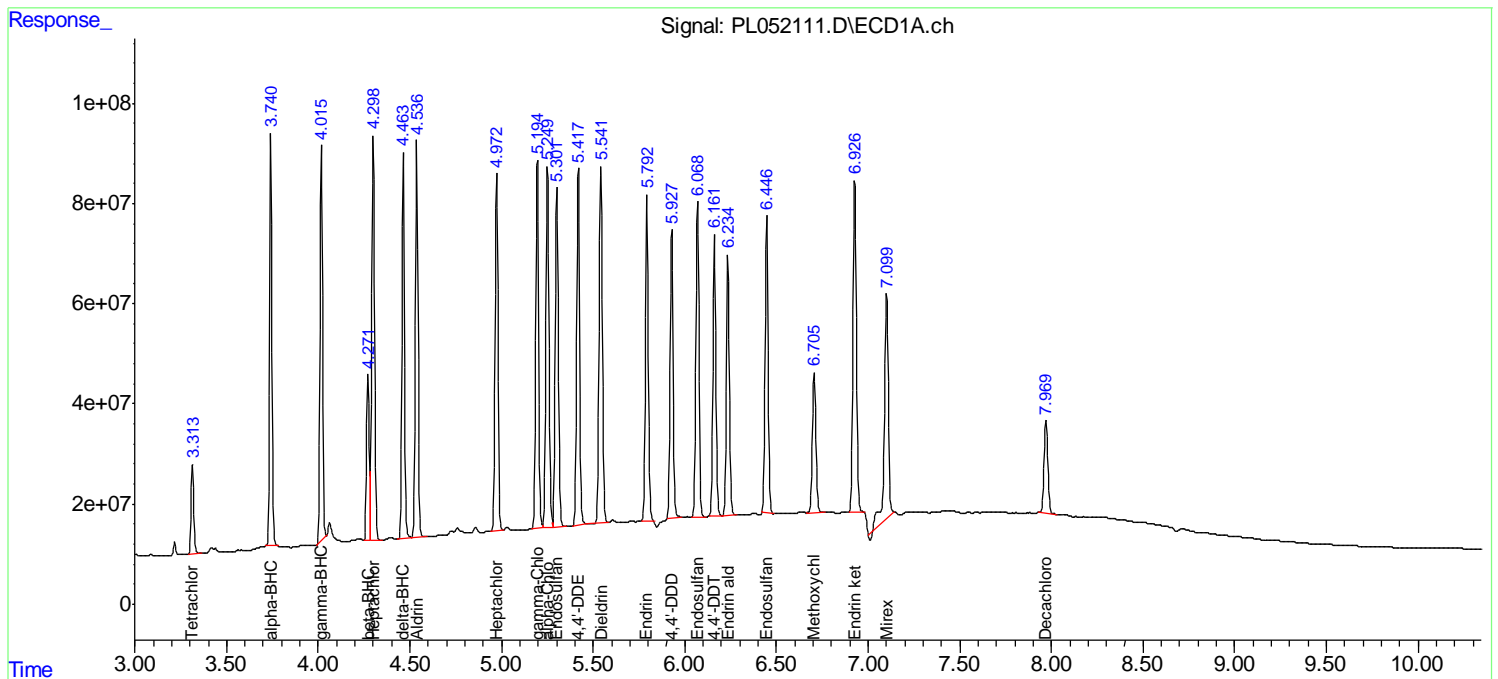
System Monitoring Compounds							
1)	SA Tetrachlo...	3.315	3.923	174.3E6	46325975	20.363	21.204
28)	SA Decachlor...	7.971	8.948	258.2E6	56756447	21.274	18.646
Target Compounds							
2)	A alpha-BHC	3.742	4.311	799.5E6	166.0E6	55.180	51.507
3)	MA gamma-BHC...	4.017	4.595	766.9E6	161.3E6	58.293	51.232
4)	MA Heptachlor	4.300	5.095	850.7E6	185.3E6	56.192	52.852
5)	MB Aldrin	4.537	5.396	846.7E6	185.5E6	58.593	56.562
6)	B beta-BHC	4.272	4.772	326.1E6	78393846	57.111	53.789
7)	B delta-BHC	4.464	4.985	798.6E6	157.3E6	53.709	50.266
8)	B Heptachlo...	4.973	5.783	798.5E6	181.5E6	57.098	53.791
9)	A Endosulfan I	5.303	6.138	783.7E6	175.3E6	58.292	54.209
10)	B gamma-Chl...	5.195	6.017	847.1E6	188.0E6	56.728	51.486
11)	B alpha-Chl...	5.251	6.088	820.6E6	187.6E6	56.706	54.358
12)	B 4,4'-DDE	5.418	6.249	836.6E6	193.7E6	61.127	55.022
13)	MA Dieldrin	5.542	6.394	853.8E6	188.0E6	56.154	54.890
14)	MA Endrin	5.794	6.611	773.4E6	161.0E6	53.026	53.221
15)	B Endosulfa...	6.069	6.823	750.6E6	172.7E6	53.948	52.400
16)	A 4,4'-DDD	5.929	6.739	693.0E6	156.4E6	56.596	57.759
17)	MA 4,4'-DDT	6.162	7.036	688.0E6	148.5E6	53.957	50.729
18)	B Endrin al...	6.236	6.948	631.8E6	148.6E6	54.308	52.565
19)	B Endosulfa...	6.447	7.170	739.5E6	172.3E6	56.845	55.804
20)	A Methoxychlor	6.707	7.497	359.3E6	85613584	53.000	51.046
21)	B Endrin ke...	6.928	7.639	834.0E6	182.7E6	58.949	57.093
22)	Mirex	7.101	8.086	694.6E6	134.6E6	65.609	55.319

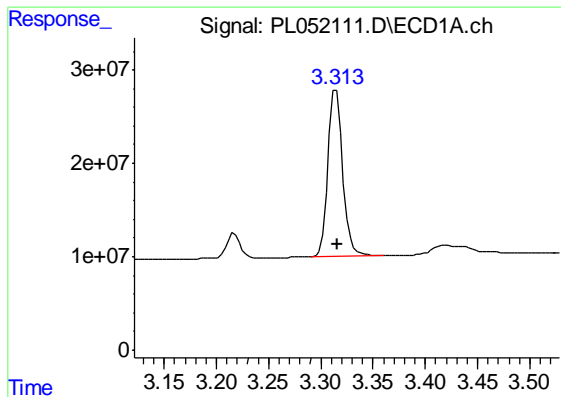
(f)=RT Delta > 1/2 Window (#)=Amounts differ by > 25% (m)=manual int.

Data Path : Z:\pestpcbsrv\HPCHEM1\ECD_L\Data\PL083119\
 Data File : PL052111.D
 Signal(s) : Signal #1: ECD1A.ch Signal #2: ECD2B.ch
 Acq On : 31 Aug 2019 13:41
 Operator : SG\AJ
 Sample : PB122669BS
 Misc :
 ALS Vial : 5 Sample Multiplier: 1

Integration File signal 1: autoint1.e
 Integration File signal 2: autoint2.e
 Quant Time: Aug 31 22:39:24 2019
 Quant Method : Z:\pestpcbsrv\HPCHEM1\ECD_L\methods\PL081919.M
 Quant Title : GC Extractables
 QLast Update : Mon Aug 19 18:03:07 2019
 Response via : Initial Calibration
 Integrator: ChemStation

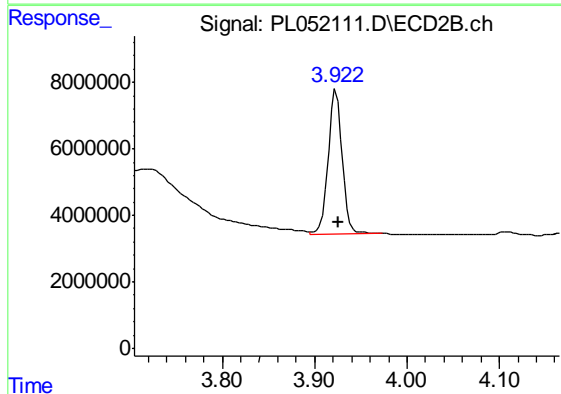
Volume Inj. : 1 µl
 Signal #1 Phase : ZB-MR2 Signal #2 Phase: ZB-MR1
 Signal #1 Info : 30M x 0.32mm x0.2 Signal #2 Info : 30M x 0.32mm x0.5µm





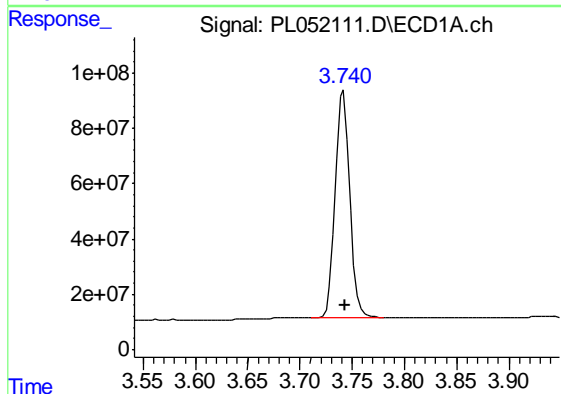
#1 Tetrachloro-m-xylene

R.T.: 3.315 min
Delta R.T.: -0.001 min
Response: 174275154
Conc: 20.36 ng/ml



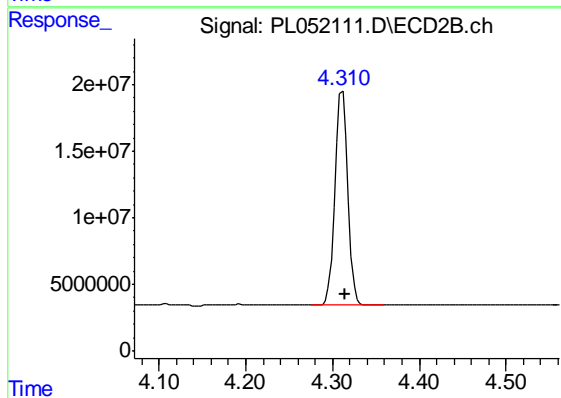
#1 Tetrachloro-m-xylene

R.T.: 3.923 min
Delta R.T.: -0.003 min
Response: 46325975
Conc: 21.20 ng/ml



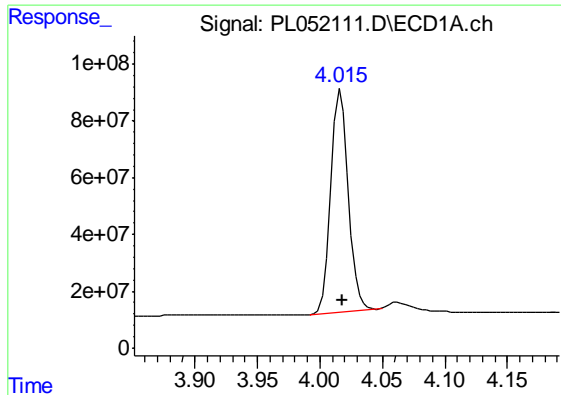
#2 alpha-BHC

R.T.: 3.742 min
Delta R.T.: 0.000 min
Response: 799545699
Conc: 55.18 ng/ml



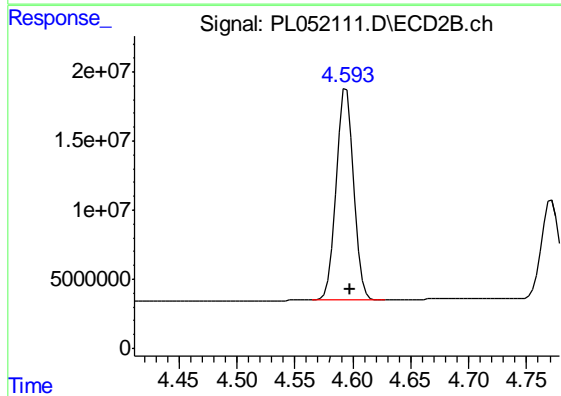
#2 alpha-BHC

R.T.: 4.311 min
Delta R.T.: -0.003 min
Response: 165973716
Conc: 51.51 ng/ml



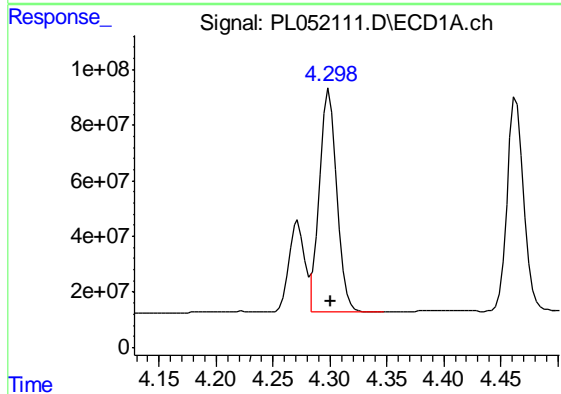
#3 gamma-BHC (Lindane)

R.T.: 4.017 min
Delta R.T.: -0.001 min
Response: 766940371
Conc: 58.29 ng/ml



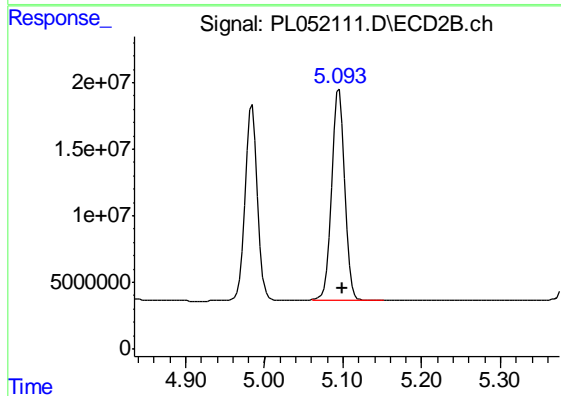
#3 gamma-BHC (Lindane)

R.T.: 4.595 min
Delta R.T.: -0.003 min
Response: 161293085
Conc: 51.23 ng/ml



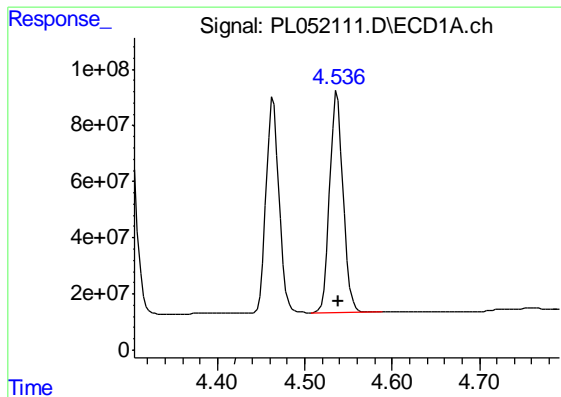
#4 Heptachlor

R.T.: 4.300 min
Delta R.T.: -0.001 min
Response: 850681346
Conc: 56.19 ng/ml



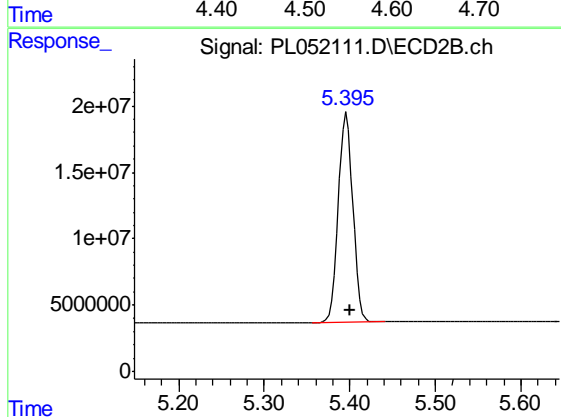
#4 Heptachlor

R.T.: 5.095 min
Delta R.T.: -0.004 min
Response: 185346181
Conc: 52.85 ng/ml



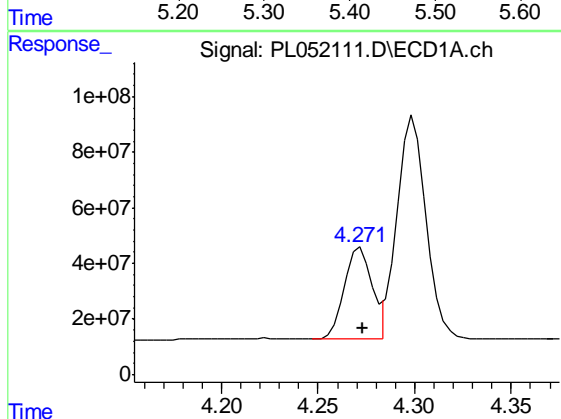
#5 Aldrin

R.T.: 4.537 min
Delta R.T.: -0.002 min
Response: 846703163
Conc: 58.59 ng/ml



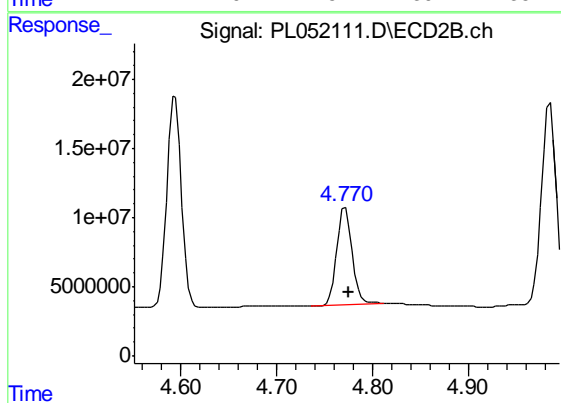
#5 Aldrin

R.T.: 5.396 min
Delta R.T.: -0.005 min
Response: 185459362
Conc: 56.56 ng/ml



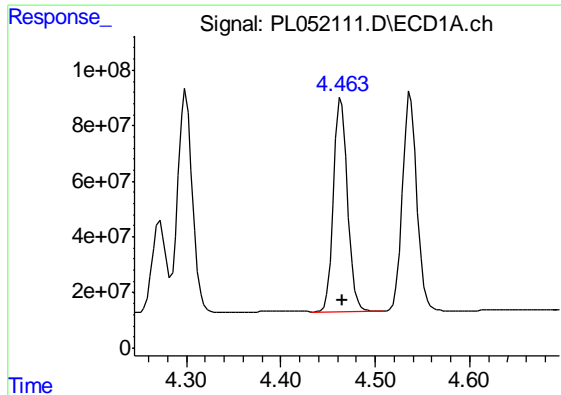
#6 beta-BHC

R.T.: 4.272 min
Delta R.T.: 0.000 min
Response: 326107656
Conc: 57.11 ng/ml



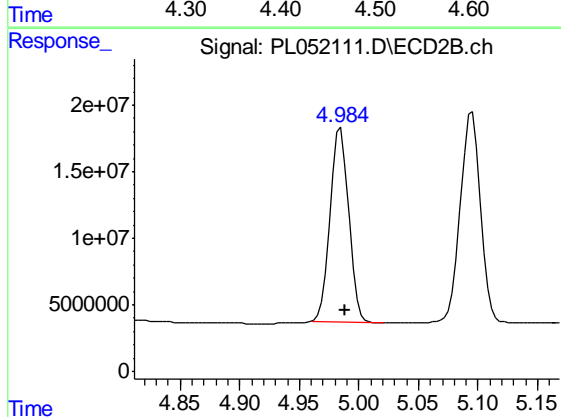
#6 beta-BHC

R.T.: 4.772 min
Delta R.T.: -0.004 min
Response: 78393846
Conc: 53.79 ng/ml



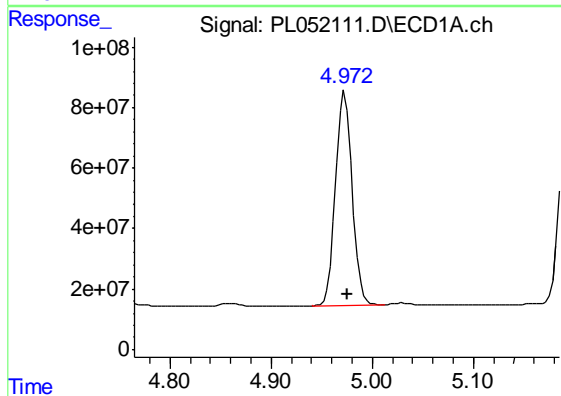
#7 delta-BHC

R.T.: 4.464 min
Delta R.T.: -0.001 min
Response: 798600471
Conc: 53.71 ng/ml



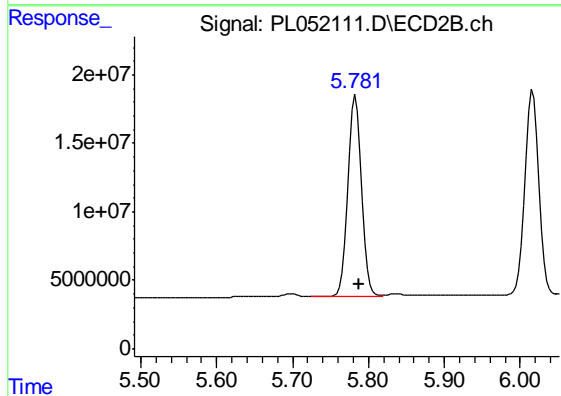
#7 delta-BHC

R.T.: 4.985 min
Delta R.T.: -0.003 min
Response: 157320087
Conc: 50.27 ng/ml



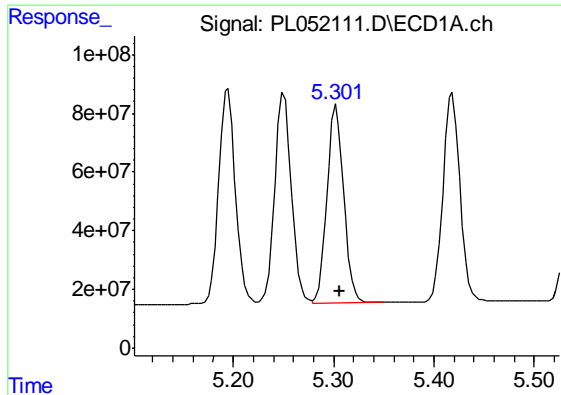
#8 Heptachlor epoxide

R.T.: 4.973 min
Delta R.T.: -0.002 min
Response: 798542921
Conc: 57.10 ng/ml



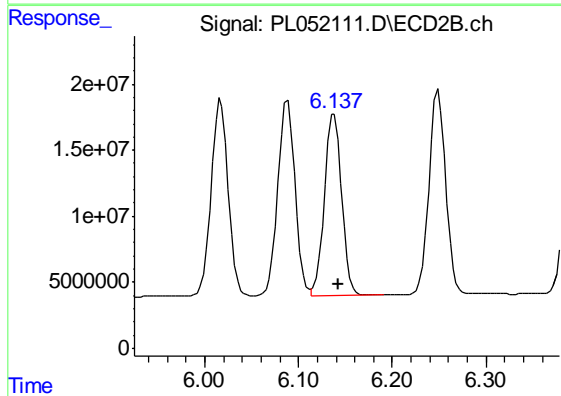
#8 Heptachlor epoxide

R.T.: 5.783 min
Delta R.T.: -0.004 min
Response: 181533129
Conc: 53.79 ng/ml



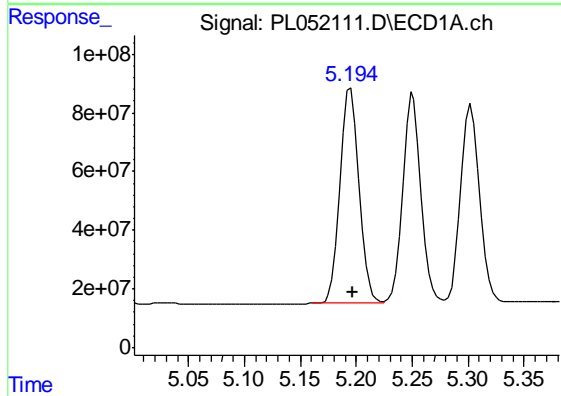
#9 Endosulfan I

R.T.: 5.303 min
Delta R.T.: -0.003 min
Response: 783663719
Conc: 58.29 ng/ml



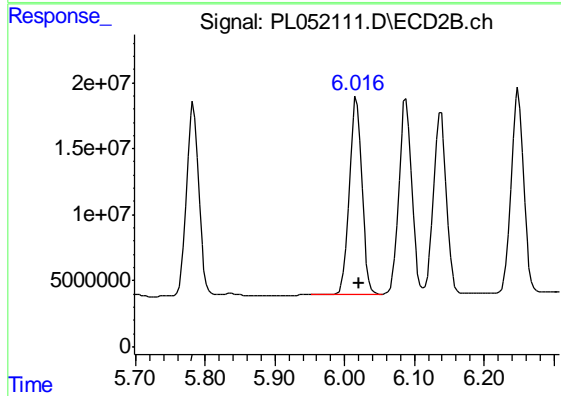
#9 Endosulfan I

R.T.: 6.138 min
Delta R.T.: -0.005 min
Response: 175268965
Conc: 54.21 ng/ml



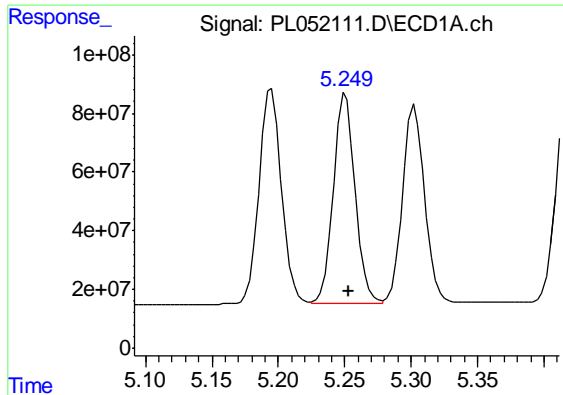
#10 gamma-Chlordane

R.T.: 5.195 min
Delta R.T.: -0.002 min
Response: 847058408
Conc: 56.73 ng/ml



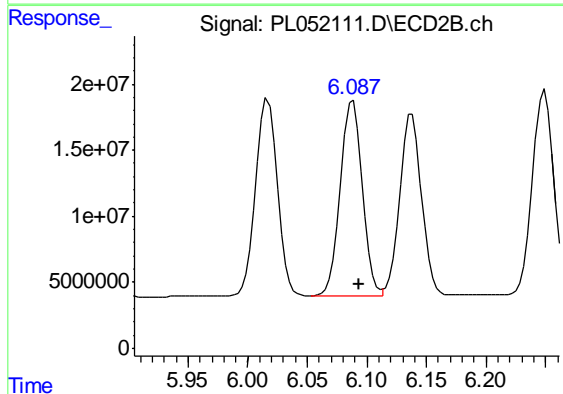
#10 gamma-Chlordane

R.T.: 6.017 min
Delta R.T.: -0.003 min
Response: 187975597
Conc: 51.49 ng/ml



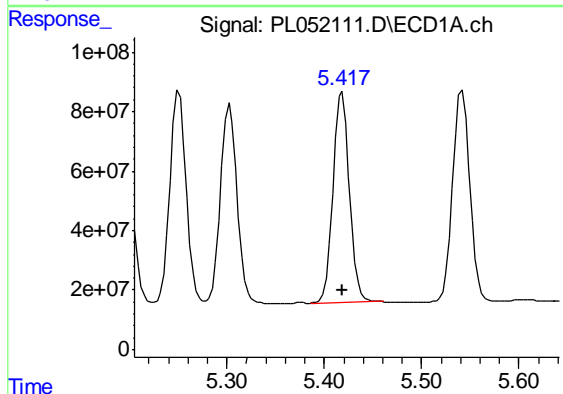
#11 alpha-Chlordane

R.T.: 5.251 min
Delta R.T.: -0.003 min
Response: 820603233
Conc: 56.71 ng/ml



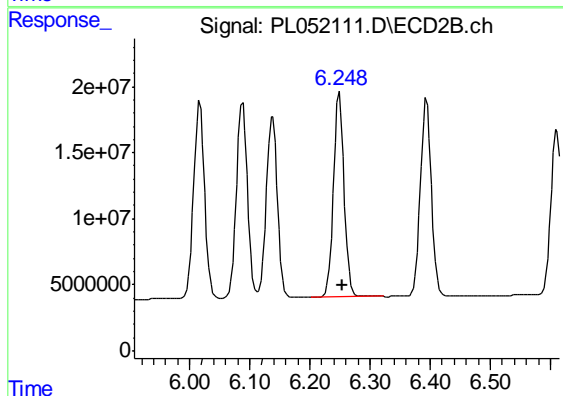
#11 alpha-Chlordane

R.T.: 6.088 min
Delta R.T.: -0.005 min
Response: 187588248
Conc: 54.36 ng/ml



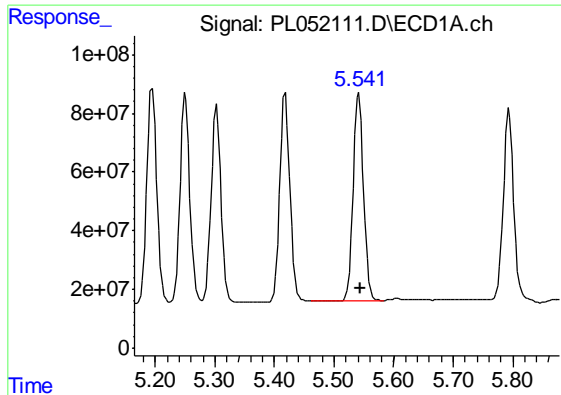
#12 4,4'-DDE

R.T.: 5.418 min
Delta R.T.: 0.000 min
Response: 836568021
Conc: 61.13 ng/ml



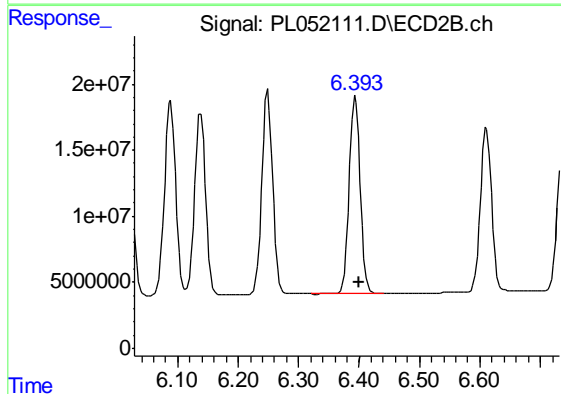
#12 4,4'-DDE

R.T.: 6.249 min
Delta R.T.: -0.004 min
Response: 193681402
Conc: 55.02 ng/ml



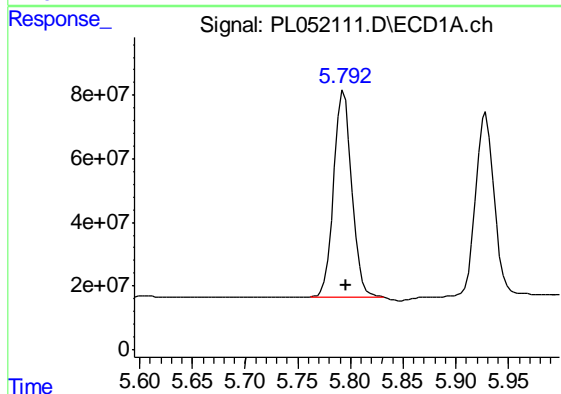
#13 Dieldrin

R.T.: 5.542 min
Delta R.T.: -0.002 min
Response: 853822099
Conc: 56.15 ng/ml



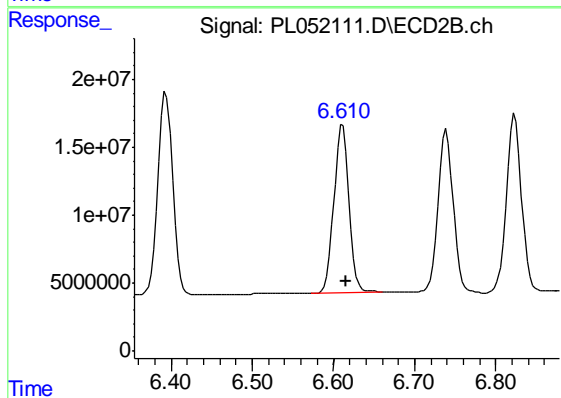
#13 Dieldrin

R.T.: 6.394 min
Delta R.T.: -0.005 min
Response: 187975839
Conc: 54.89 ng/ml



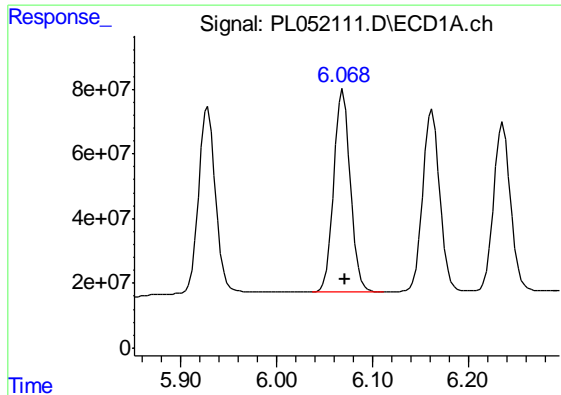
#14 Endrin

R.T.: 5.794 min
Delta R.T.: -0.003 min
Response: 773446462
Conc: 53.03 ng/ml



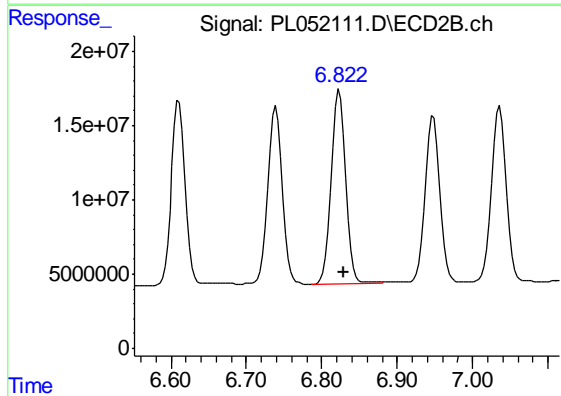
#14 Endrin

R.T.: 6.611 min
Delta R.T.: -0.005 min
Response: 160972627
Conc: 53.22 ng/ml



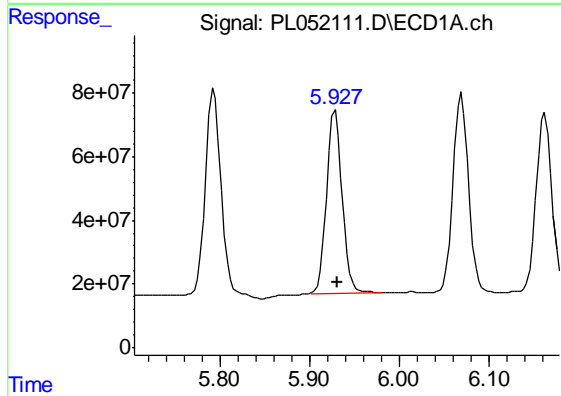
#15 Endosulfan II

R.T.: 6.069 min
Delta R.T.: -0.003 min
Response: 750634544
Conc: 53.95 ng/ml



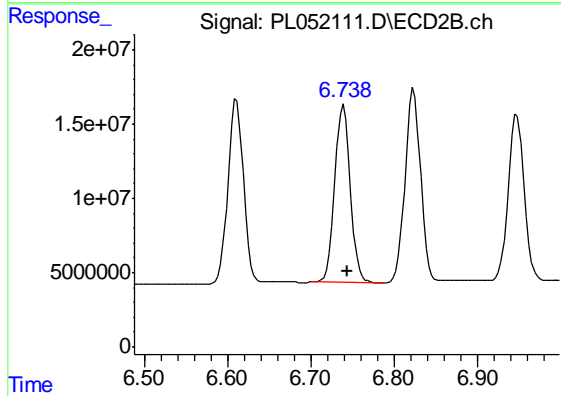
#15 Endosulfan II

R.T.: 6.823 min
Delta R.T.: -0.005 min
Response: 172711445
Conc: 52.40 ng/ml



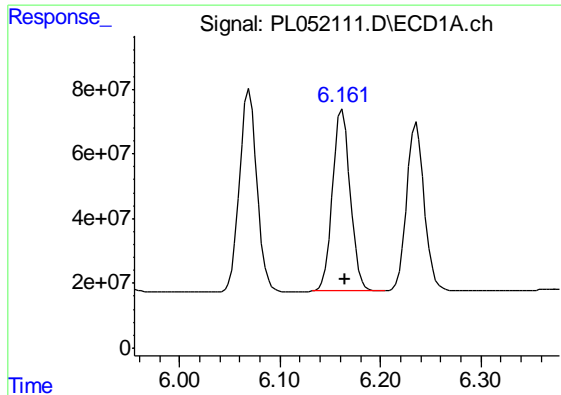
#16 4,4'-DDD

R.T.: 5.929 min
Delta R.T.: -0.003 min
Response: 693045759
Conc: 56.60 ng/ml



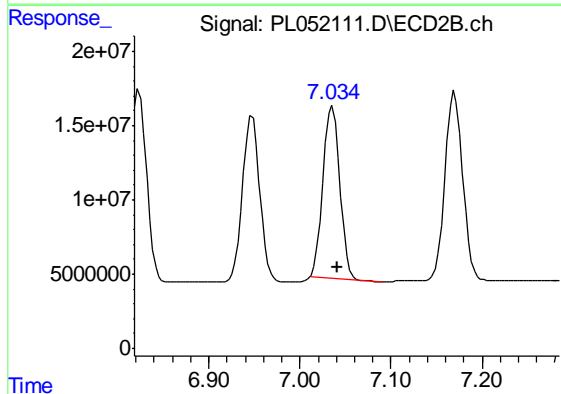
#16 4,4'-DDD

R.T.: 6.739 min
Delta R.T.: -0.005 min
Response: 156374365
Conc: 57.76 ng/ml



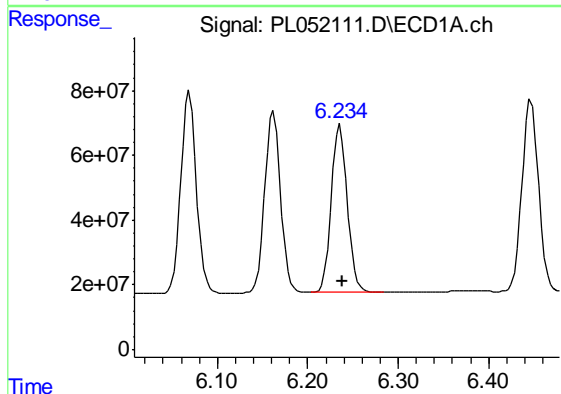
#17 4,4'-DDT

R.T.: 6.162 min
Delta R.T.: -0.003 min
Response: 688023246
Conc: 53.96 ng/ml



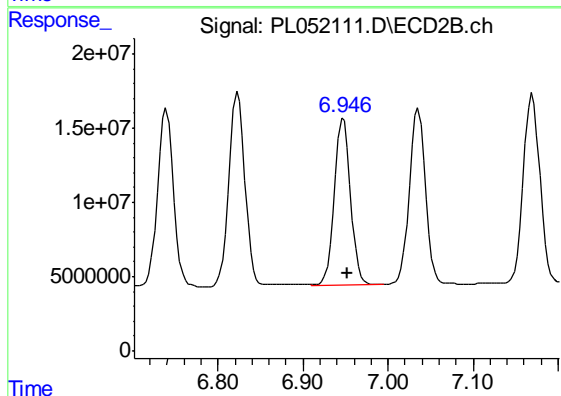
#17 4,4'-DDT

R.T.: 7.036 min
Delta R.T.: -0.005 min
Response: 148519553
Conc: 50.73 ng/ml



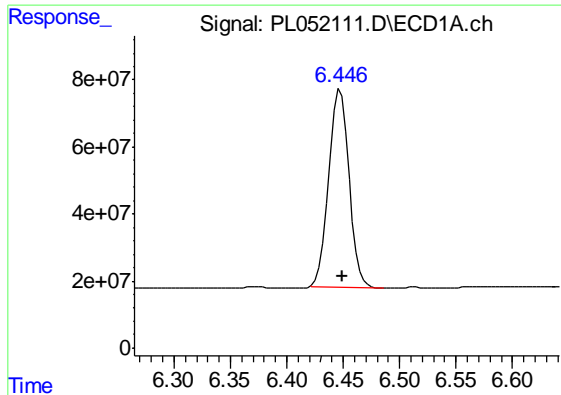
#18 Endrin aldehyde

R.T.: 6.236 min
Delta R.T.: -0.003 min
Response: 631778466
Conc: 54.31 ng/ml



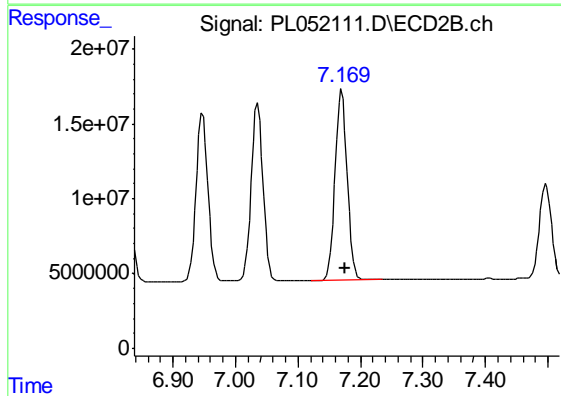
#18 Endrin aldehyde

R.T.: 6.948 min
Delta R.T.: -0.005 min
Response: 148559008
Conc: 52.56 ng/ml



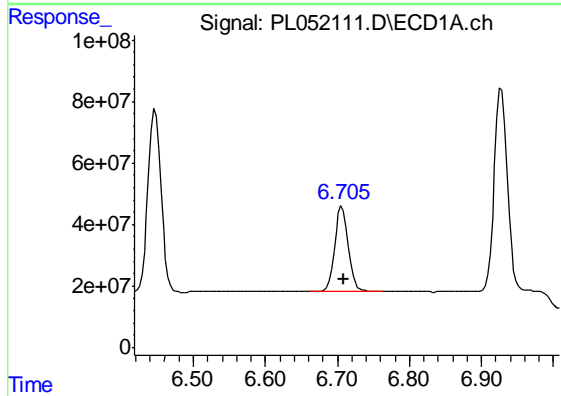
#19 Endosulfan Sulfate

R.T.: 6.447 min
 Delta R.T.: -0.002 min
 Response: 739494533
 Conc: 56.84 ng/ml



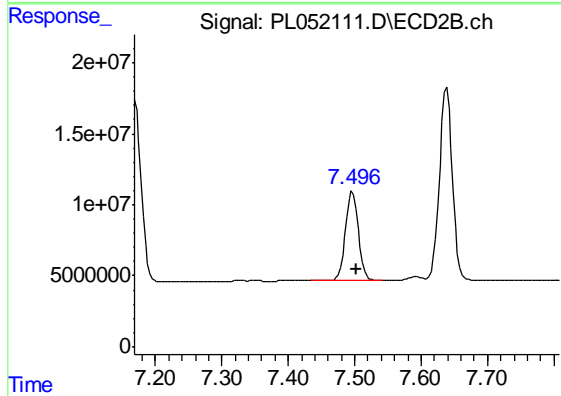
#19 Endosulfan Sulfate

R.T.: 7.170 min
 Delta R.T.: -0.006 min
 Response: 172324141
 Conc: 55.80 ng/ml



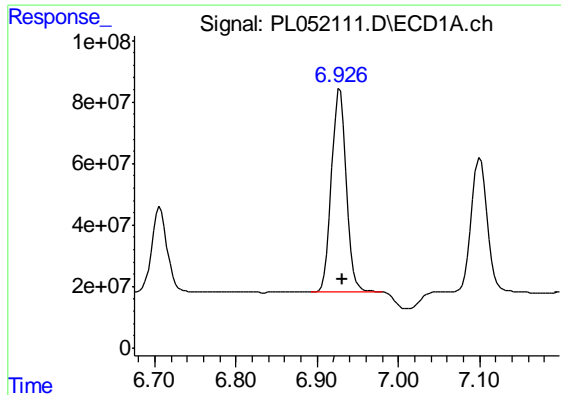
#20 Methoxychlor

R.T.: 6.707 min
 Delta R.T.: -0.003 min
 Response: 359328394
 Conc: 53.00 ng/ml



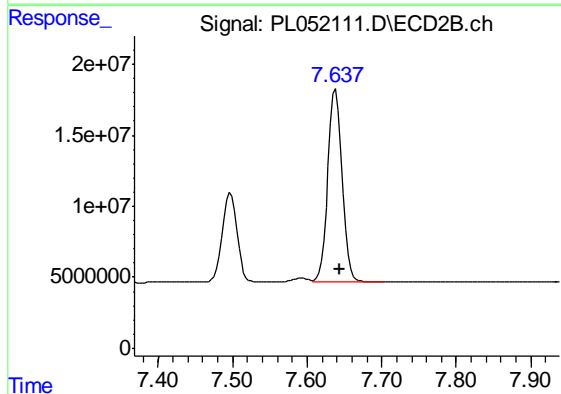
#20 Methoxychlor

R.T.: 7.497 min
 Delta R.T.: -0.005 min
 Response: 85613584
 Conc: 51.05 ng/ml



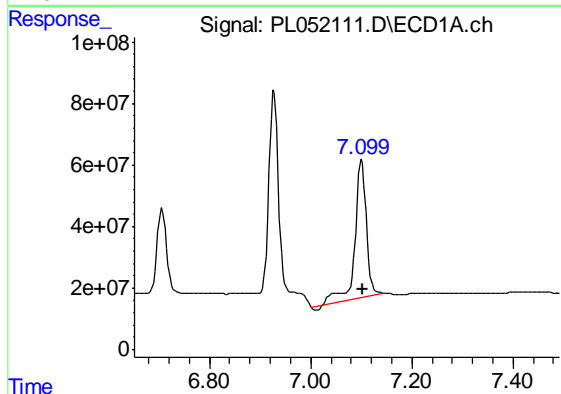
#21 Endrin ketone

R.T.: 6.928 min
Delta R.T.: -0.003 min
Response: 833953635
Conc: 58.95 ng/ml



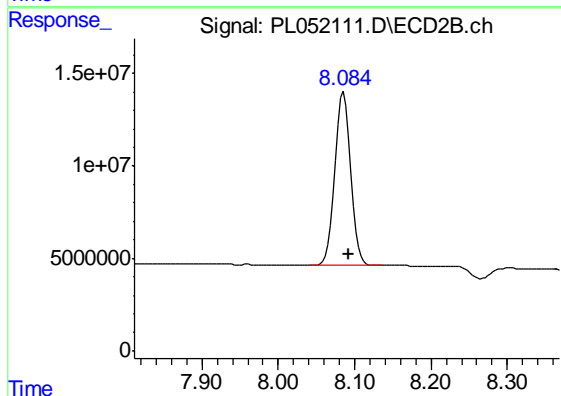
#21 Endrin ketone

R.T.: 7.639 min
Delta R.T.: -0.006 min
Response: 182668903
Conc: 57.09 ng/ml



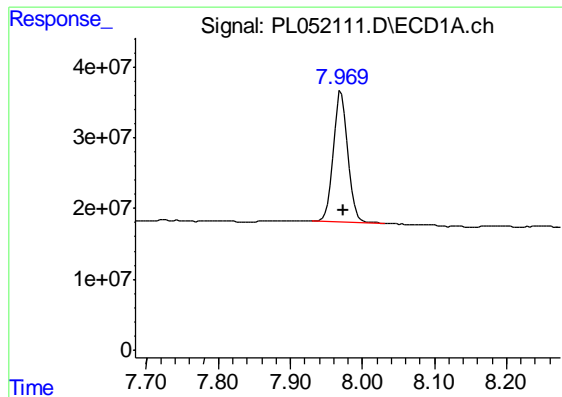
#22 Mirex

R.T.: 7.101 min
Delta R.T.: -0.003 min
Response: 694624762
Conc: 65.61 ng/ml



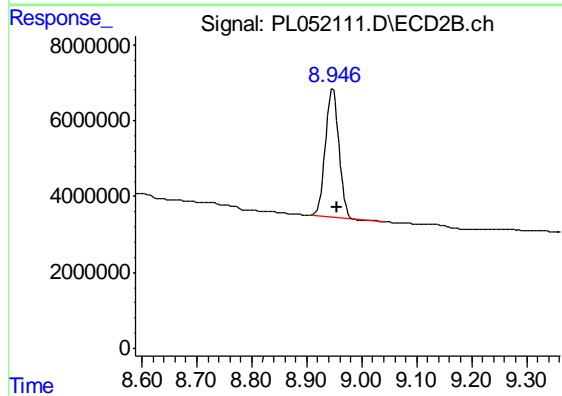
#22 Mirex

R.T.: 8.086 min
Delta R.T.: -0.006 min
Response: 134576965
Conc: 55.32 ng/ml



#28 Decachlorobiphenyl

R.T.: 7.971 min
Delta R.T.: -0.004 min
Response: 258220781
Conc: 21.27 ng/ml



#28 Decachlorobiphenyl

R.T.: 8.948 min
Delta R.T.: -0.007 min
Response: 56756447
Conc: 18.65 ng/ml