

Data Path : Z:\pestpcbsrv\HPCHEM1\ECD_L\Data\PL083119\
 Data File : PL052128.D
 Signal(s) : Signal #1: ECD1A.ch Signal #2: ECD2B.ch
 Acq On : 31 Aug 2019 17:45
 Operator : SG\AJ
 Sample : PB122728BS
 Misc :
 ALS Vial : 19 Sample Multiplier: 1

Integration File signal 1: autoint1.e
 Integration File signal 2: autoint2.e
 Quant Time: Aug 31 22:42:38 2019
 Quant Method : Z:\pestpcbsrv\HPCHEM1\ECD_L\methods\PL081919.M
 Quant Title : GC Extractables
 QLast Update : Mon Aug 19 18:03:07 2019
 Response via : Initial Calibration
 Integrator: ChemStation

Volume Inj. : 1 µl
 Signal #1 Phase : ZB-MR2 Signal #2 Phase: ZB-MR1
 Signal #1 Info : 30M x 0.32mm x0.2 Signal #2 Info : 30M x 0.32mm x0.5µm

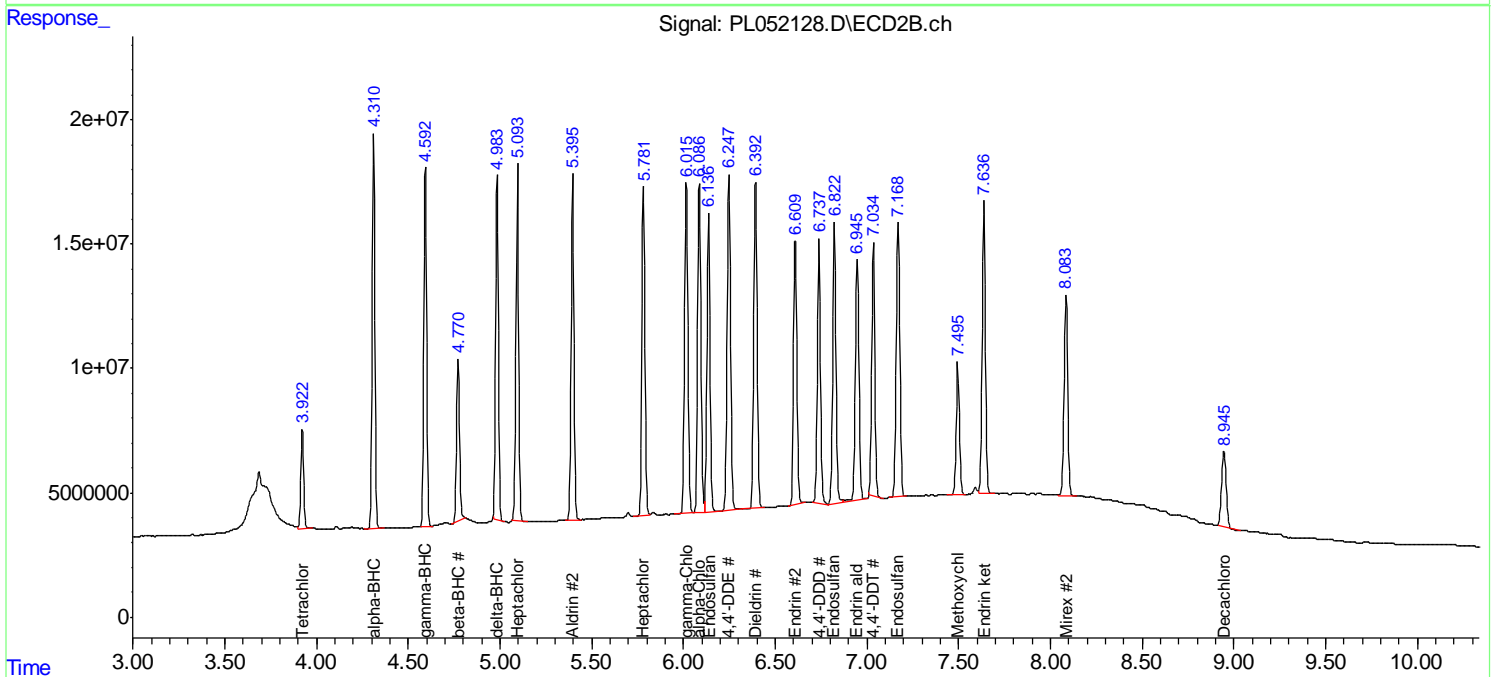
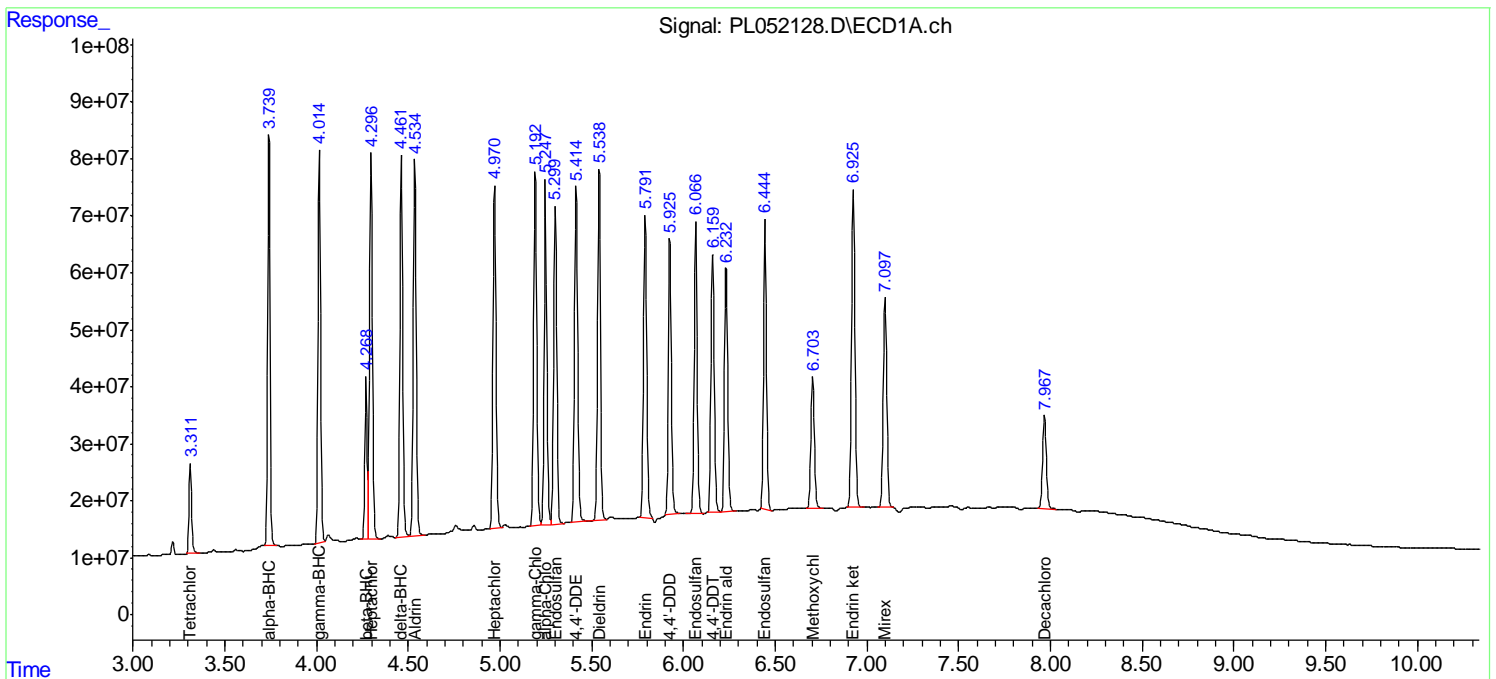
| | Compound | RT#1 | RT#2 | Resp#1 | Resp#2 | ng/ml | ng/ml |
|-----------------------------|-----------------|-------|-------|---------|----------|--------|--------|
| ----- | | | | | | | |
| System Monitoring Compounds | | | | | | | |
| 1) | SA Tetrachlo... | 3.313 | 3.923 | 151.8E6 | 41809009 | 17.732 | 19.136 |
| 28) | SA Decachlor... | 7.969 | 8.947 | 220.2E6 | 50191500 | 18.145 | 16.489 |
| Target Compounds | | | | | | | |
| 2) | A alpha-BHC | 3.740 | 4.311 | 697.3E6 | 156.2E6 | 48.126 | 48.485 |
| 3) | MA gamma-BHC... | 4.015 | 4.594 | 662.7E6 | 151.2E6 | 50.370 | 48.018 |
| 4) | MA Heptachlor | 4.298 | 5.095 | 725.7E6 | 165.6E6 | 47.938 | 47.209 |
| 5) | MB Aldrin | 4.536 | 5.396 | 721.1E6 | 164.3E6 | 49.903 | 50.120 |
| 6) | B beta-BHC | 4.270 | 4.771 | 279.2E6 | 72577950 | 48.905 | 49.799 |
| 7) | B delta-BHC | 4.462 | 4.984 | 679.8E6 | 143.1E6 | 45.718 | 45.707 |
| 8) | B Heptachlor... | 4.971 | 5.783 | 674.6E6 | 159.5E6 | 48.237 | 47.263 |
| 9) | A Endosulfan I | 5.301 | 6.137 | 654.4E6 | 154.2E6 | 48.676 | 47.689 |
| 10) | B gamma-Chl... | 5.193 | 6.016 | 711.5E6 | 165.6E6 | 47.653 | 45.358 |
| 11) | B alpha-Chl... | 5.249 | 6.087 | 687.3E6 | 165.3E6 | 47.496 | 47.892 |
| 12) | B 4,4'-DDE | 5.416 | 6.248 | 695.6E6 | 169.1E6 | 50.827 | 48.046 |
| 13) | MA Dieldrin | 5.540 | 6.394 | 714.5E6 | 164.8E6 | 46.991 | 48.121 |
| 14) | MA Endrin | 5.792 | 6.610 | 631.7E6 | 136.5E6 | 43.310 | 45.124 |
| 15) | B Endosulfa... | 6.067 | 6.823 | 627.3E6 | 150.1E6 | 45.087 | 45.538 |
| 16) | A 4,4'-DDD | 5.926 | 6.739 | 577.5E6 | 136.4E6 | 47.164 | 50.381 |
| 17) | MA 4,4'-DDT | 6.160 | 7.035 | 555.3E6 | 127.7E6 | 43.552 | 43.622 |
| 18) | B Endrin al... | 6.233 | 6.947 | 528.4E6 | 131.6E6 | 45.425 | 46.569 |
| 19) | B Endosulfa... | 6.445 | 7.170 | 616.1E6 | 148.3E6 | 47.361 | 48.023 |
| 20) | A Methoxychlor | 6.704 | 7.496 | 294.3E6 | 71582551 | 43.410 | 42.680 |
| 21) | B Endrin ke... | 6.926 | 7.638 | 700.5E6 | 157.0E6 | 49.513 | 49.079 |
| 22) | Mirex | 7.098 | 8.085 | 489.6E6 | 117.3E6 | 46.240 | 48.211 |

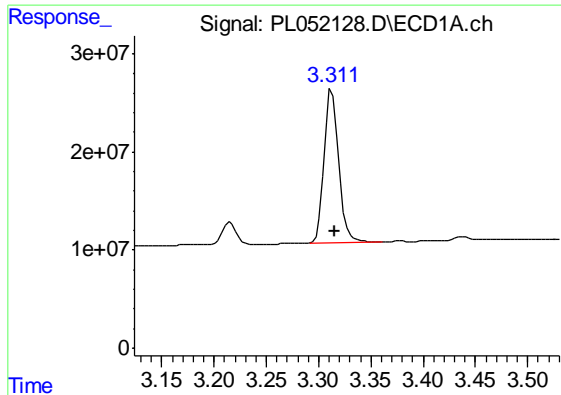
(f)=RT Delta > 1/2 Window (#)=Amounts differ by > 25% (m)=manual int.

Data Path : Z:\pestpcbsrv\HPCHEM1\ECD_L\Data\PL083119\
 Data File : PL052128.D
 Signal(s) : Signal #1: ECD1A.ch Signal #2: ECD2B.ch
 Acq On : 31 Aug 2019 17:45
 Operator : SG\AJ
 Sample : PB122728BS
 Misc :
 ALS Vial : 19 Sample Multiplier: 1

Integration File signal 1: autoint1.e
 Integration File signal 2: autoint2.e
 Quant Time: Aug 31 22:42:38 2019
 Quant Method : Z:\pestpcbsrv\HPCHEM1\ECD_L\methods\PL081919.M
 Quant Title : GC Extractables
 QLast Update : Mon Aug 19 18:03:07 2019
 Response via : Initial Calibration
 Integrator: ChemStation

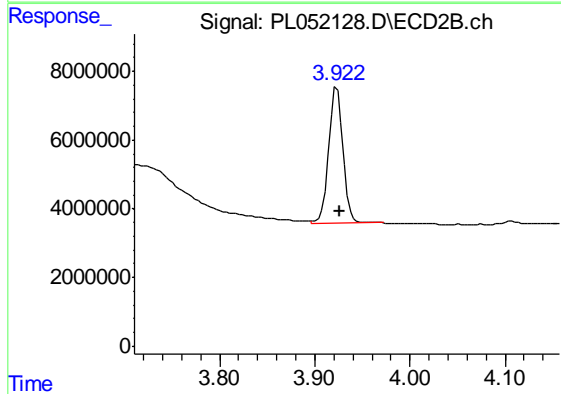
Volume Inj. : 1 µl
 Signal #1 Phase : ZB-MR2 Signal #2 Phase: ZB-MR1
 Signal #1 Info : 30M x 0.32mm x0.2 Signal #2 Info : 30M x 0.32mm x0.5µm





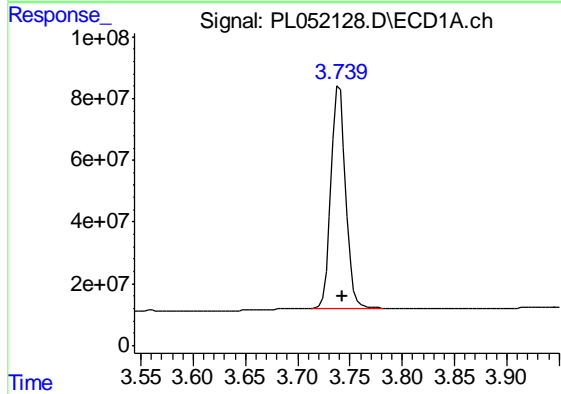
#1 Tetrachloro-m-xylene

R.T.: 3.313 min
Delta R.T.: -0.003 min
Response: 151762757
Conc: 17.73 ng/ml



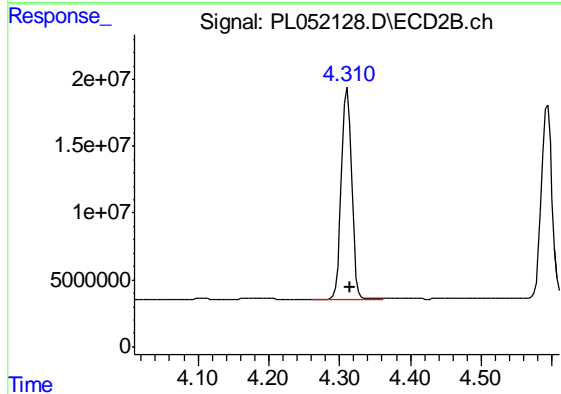
#1 Tetrachloro-m-xylene

R.T.: 3.923 min
Delta R.T.: -0.003 min
Response: 41809009
Conc: 19.14 ng/ml



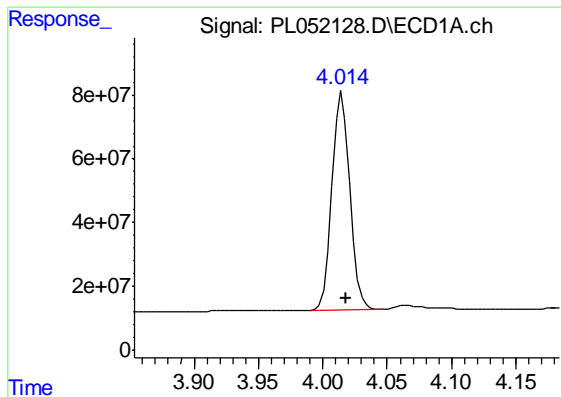
#2 alpha-BHC

R.T.: 3.740 min
Delta R.T.: -0.003 min
Response: 697330333
Conc: 48.13 ng/ml



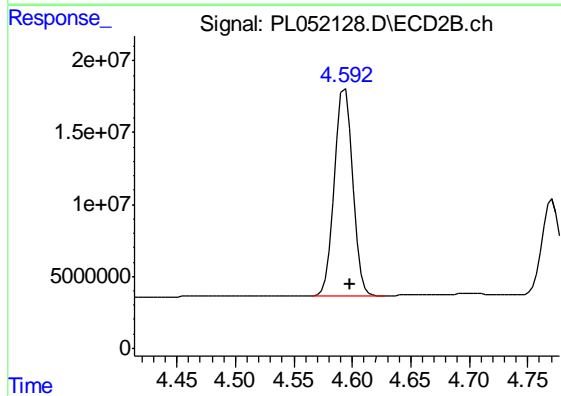
#2 alpha-BHC

R.T.: 4.311 min
Delta R.T.: -0.004 min
Response: 156238062
Conc: 48.49 ng/ml



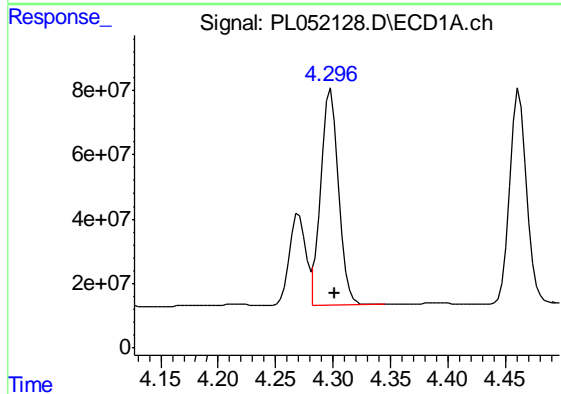
#3 gamma-BHC (Lindane)

R.T.: 4.015 min
Delta R.T.: -0.003 min
Response: 662692976
Conc: 50.37 ng/ml



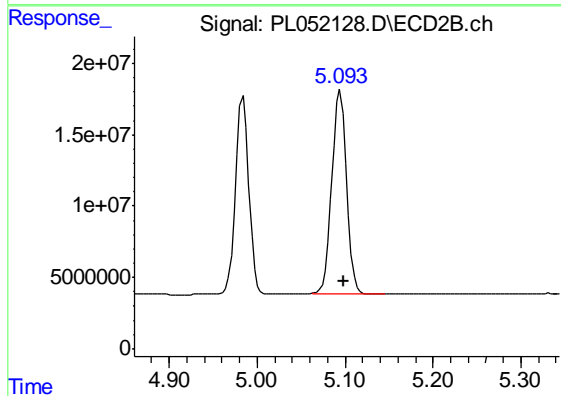
#3 gamma-BHC (Lindane)

R.T.: 4.594 min
Delta R.T.: -0.004 min
Response: 151176605
Conc: 48.02 ng/ml



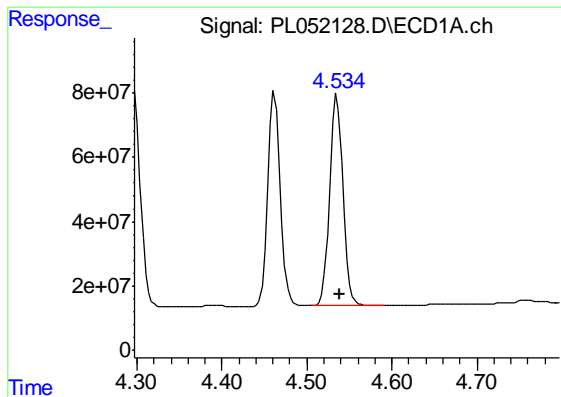
#4 Heptachlor

R.T.: 4.298 min
Delta R.T.: -0.003 min
Response: 725725151
Conc: 47.94 ng/ml



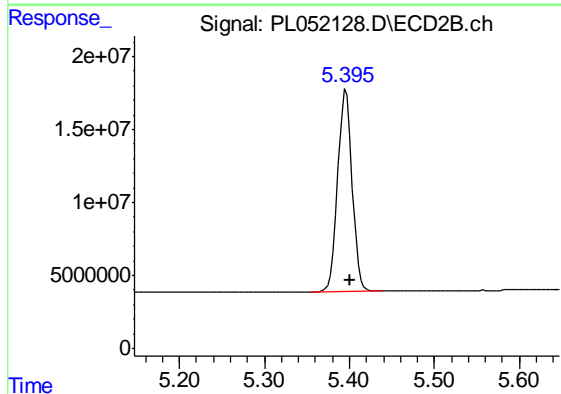
#4 Heptachlor

R.T.: 5.095 min
Delta R.T.: -0.004 min
Response: 165557802
Conc: 47.21 ng/ml



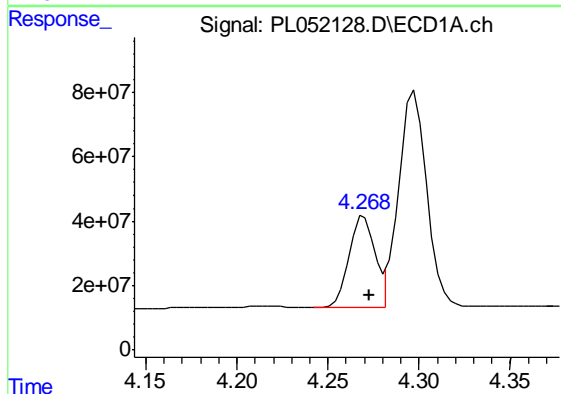
#5 Aldrin

R.T.: 4.536 min
Delta R.T.: -0.004 min
Response: 721131994
Conc: 49.90 ng/ml



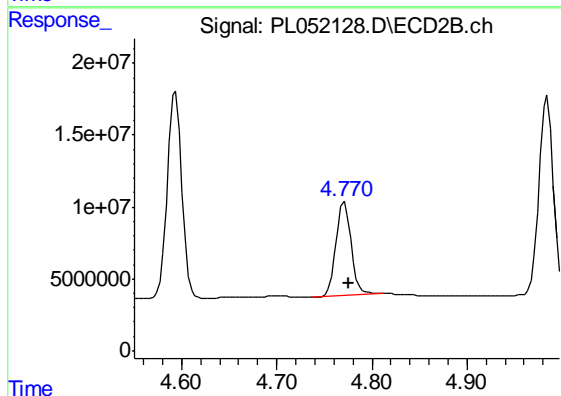
#5 Aldrin

R.T.: 5.396 min
Delta R.T.: -0.005 min
Response: 164338352
Conc: 50.12 ng/ml



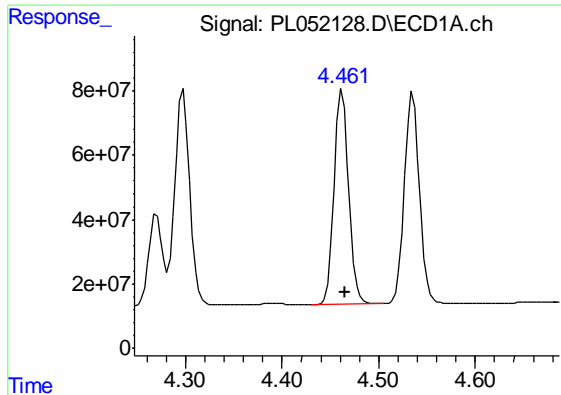
#6 beta-BHC

R.T.: 4.270 min
Delta R.T.: -0.003 min
Response: 279249251
Conc: 48.90 ng/ml



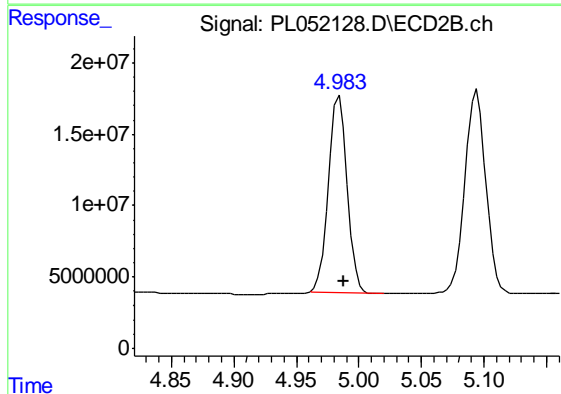
#6 beta-BHC

R.T.: 4.771 min
Delta R.T.: -0.005 min
Response: 72577950
Conc: 49.80 ng/ml



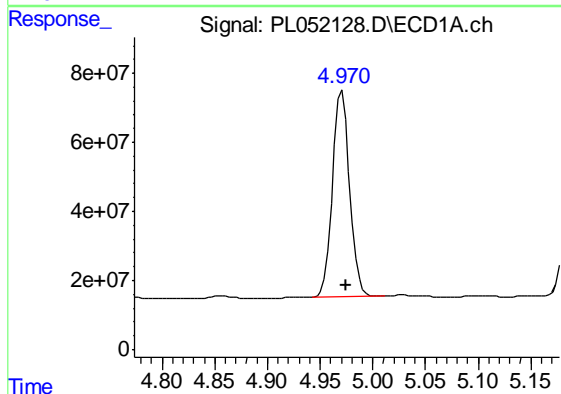
#7 delta-BHC

R.T.: 4.462 min
Delta R.T.: -0.003 min
Response: 679784748
Conc: 45.72 ng/ml



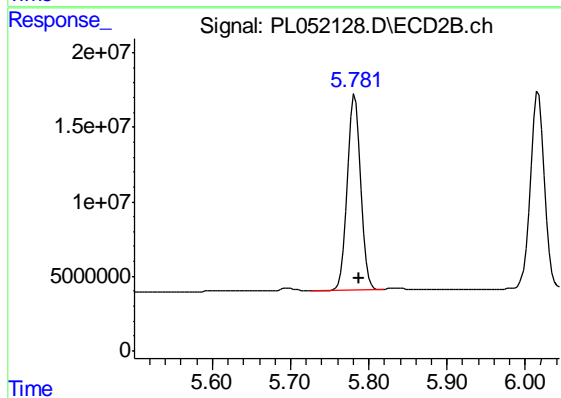
#7 delta-BHC

R.T.: 4.984 min
Delta R.T.: -0.004 min
Response: 143050948
Conc: 45.71 ng/ml



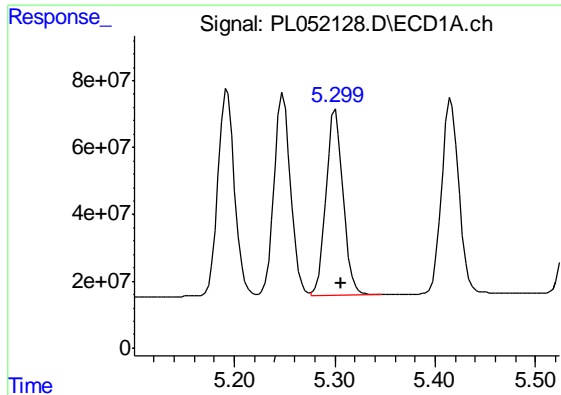
#8 Heptachlor epoxide

R.T.: 4.971 min
Delta R.T.: -0.004 min
Response: 674617139
Conc: 48.24 ng/ml



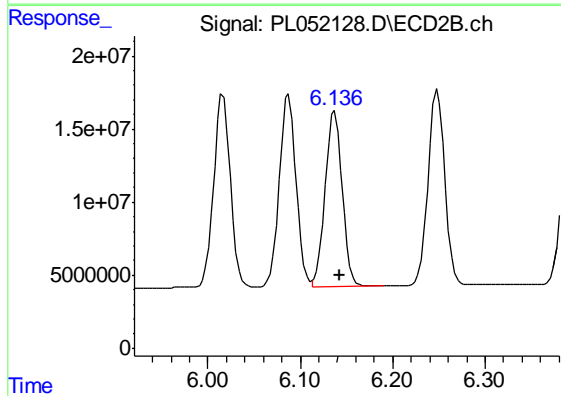
#8 Heptachlor epoxide

R.T.: 5.783 min
Delta R.T.: -0.005 min
Response: 159504346
Conc: 47.26 ng/ml



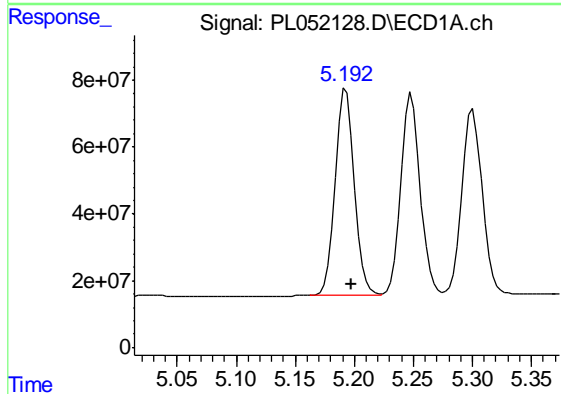
#9 Endosulfan I

R.T.: 5.301 min
Delta R.T.: -0.005 min
Response: 654381918
Conc: 48.68 ng/ml



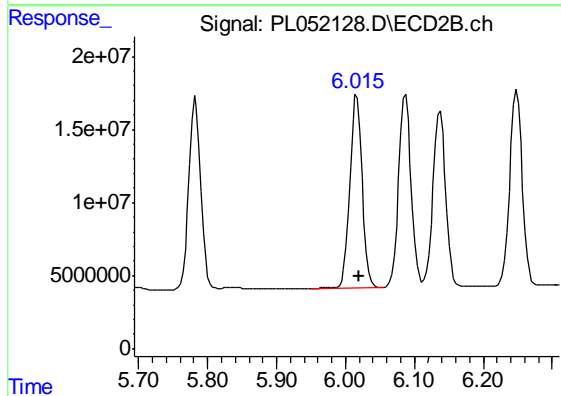
#9 Endosulfan I

R.T.: 6.137 min
Delta R.T.: -0.006 min
Response: 154189318
Conc: 47.69 ng/ml



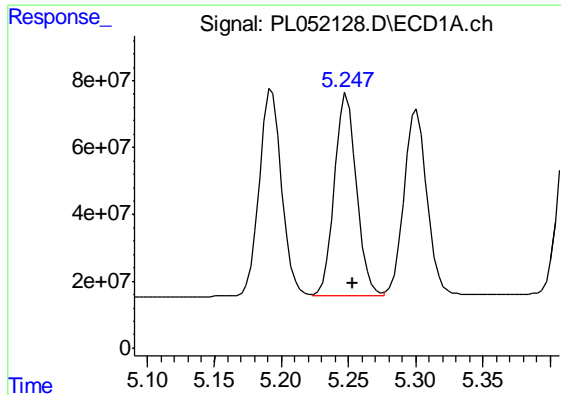
#10 gamma-Chlordane

R.T.: 5.193 min
Delta R.T.: -0.004 min
Response: 711548106
Conc: 47.65 ng/ml



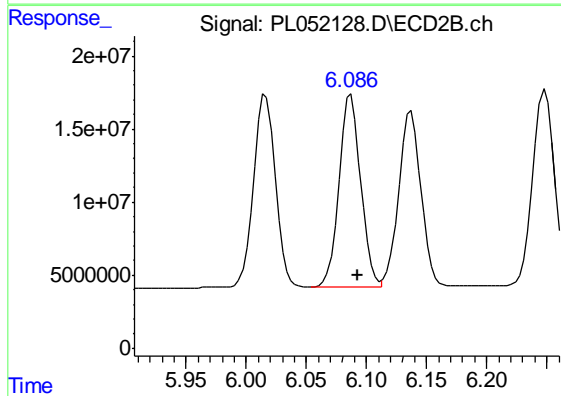
#10 gamma-Chlordane

R.T.: 6.016 min
Delta R.T.: -0.004 min
Response: 165602536
Conc: 45.36 ng/ml



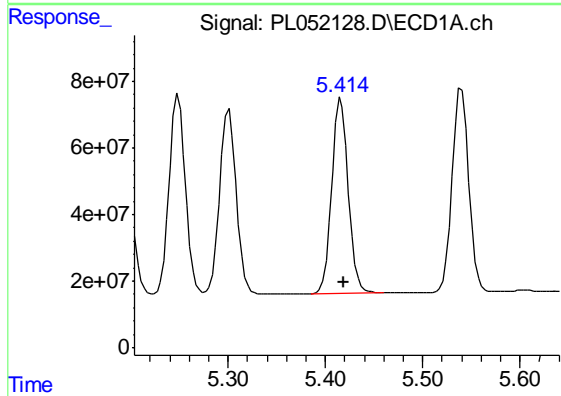
#11 alpha-Chlordane

R.T.: 5.249 min
 Delta R.T.: -0.005 min
 Response: 687321980
 Conc: 47.50 ng/ml



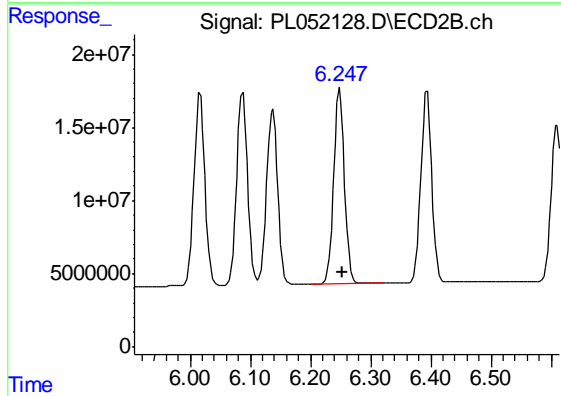
#11 alpha-Chlordane

R.T.: 6.087 min
 Delta R.T.: -0.006 min
 Response: 165275234
 Conc: 47.89 ng/ml



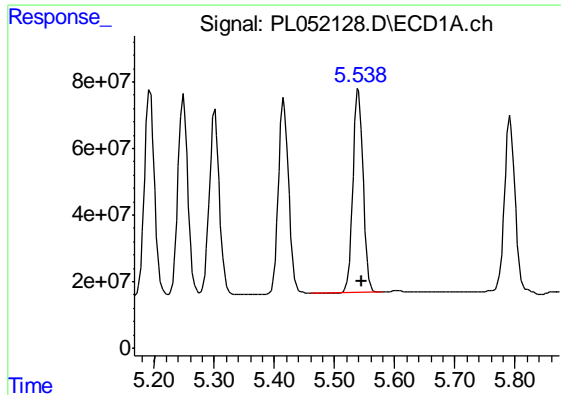
#12 4,4'-DDE

R.T.: 5.416 min
 Delta R.T.: -0.003 min
 Response: 695600966
 Conc: 50.83 ng/ml



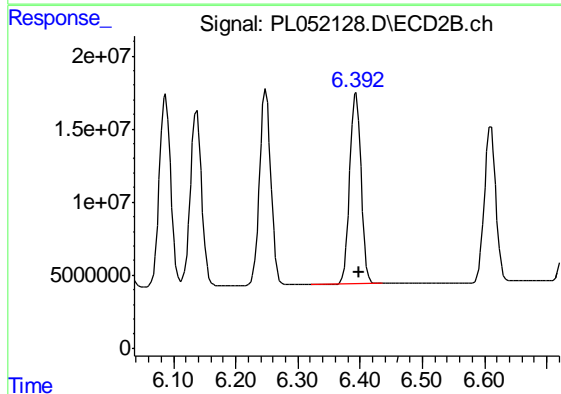
#12 4,4'-DDE

R.T.: 6.248 min
 Delta R.T.: -0.005 min
 Response: 169124820
 Conc: 48.05 ng/ml



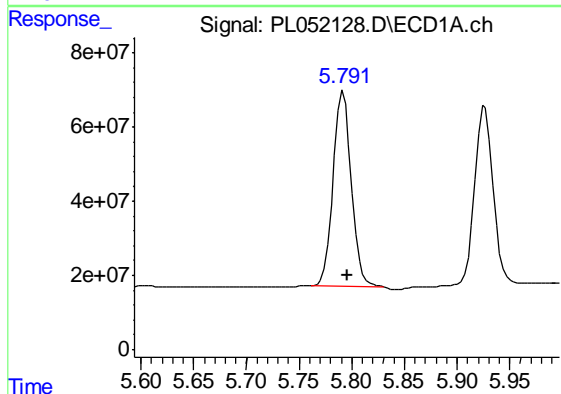
#13 Dieldrin

R.T.: 5.540 min
 Delta R.T.: -0.004 min
 Response: 714496487
 Conc: 46.99 ng/ml



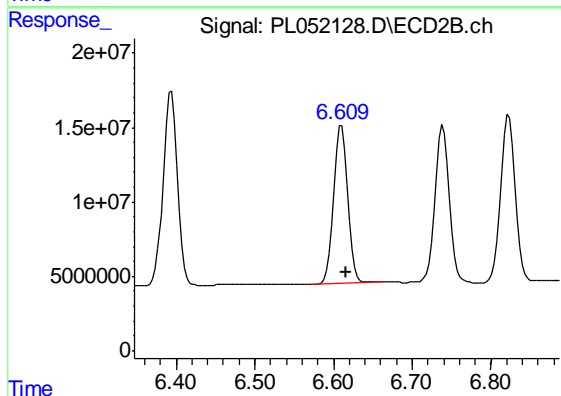
#13 Dieldrin

R.T.: 6.394 min
 Delta R.T.: -0.006 min
 Response: 164795795
 Conc: 48.12 ng/ml



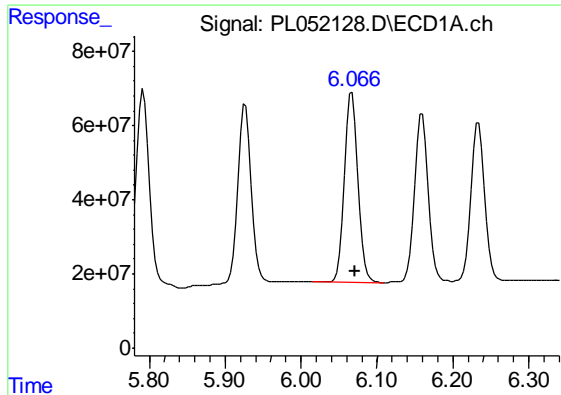
#14 Endrin

R.T.: 5.792 min
 Delta R.T.: -0.004 min
 Response: 631727956
 Conc: 43.31 ng/ml



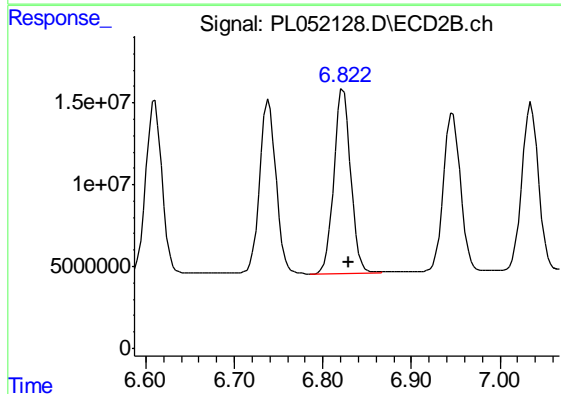
#14 Endrin

R.T.: 6.610 min
 Delta R.T.: -0.005 min
 Response: 136483655
 Conc: 45.12 ng/ml



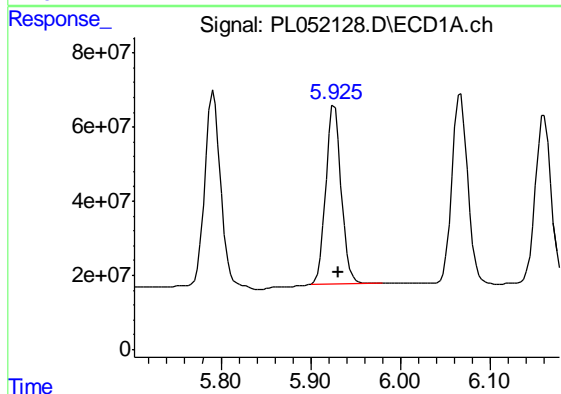
#15 Endosulfan II

R.T.: 6.067 min
Delta R.T.: -0.005 min
Response: 627344396
Conc: 45.09 ng/ml



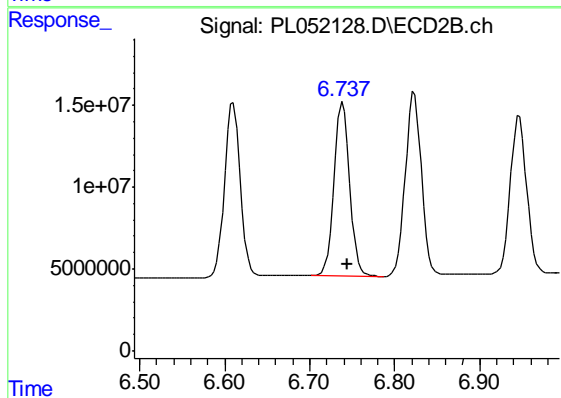
#15 Endosulfan II

R.T.: 6.823 min
Delta R.T.: -0.006 min
Response: 150095488
Conc: 45.54 ng/ml



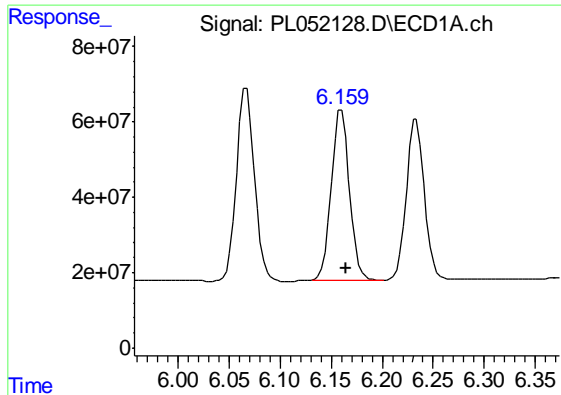
#16 4,4'-DDD

R.T.: 5.926 min
Delta R.T.: -0.005 min
Response: 577547886
Conc: 47.16 ng/ml



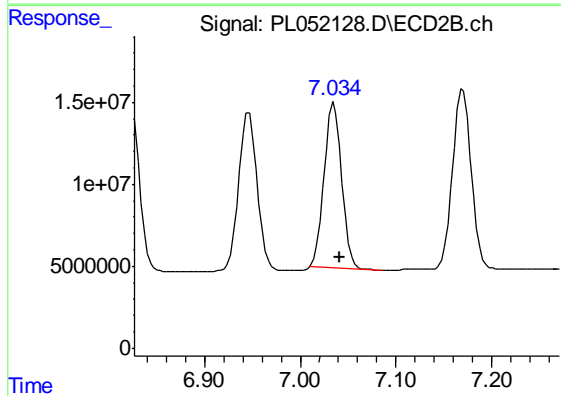
#16 4,4'-DDD

R.T.: 6.739 min
Delta R.T.: -0.006 min
Response: 136397340
Conc: 50.38 ng/ml



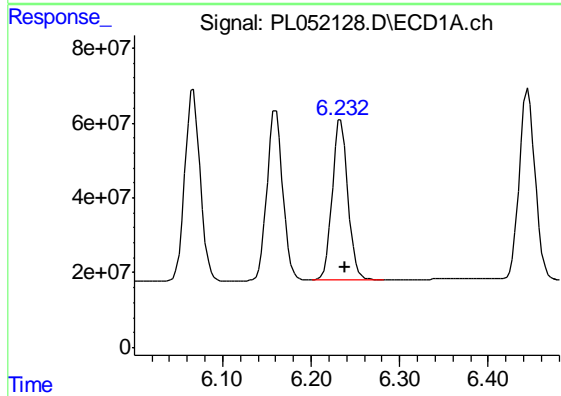
#17 4,4'-DDT

R.T.: 6.160 min
Delta R.T.: -0.005 min
Response: 555349455
Conc: 43.55 ng/ml



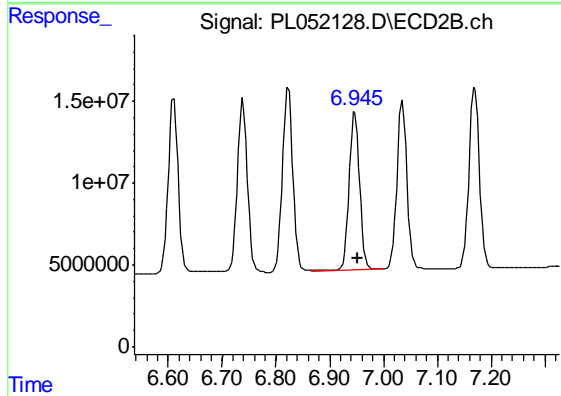
#17 4,4'-DDT

R.T.: 7.035 min
Delta R.T.: -0.006 min
Response: 127712720
Conc: 43.62 ng/ml



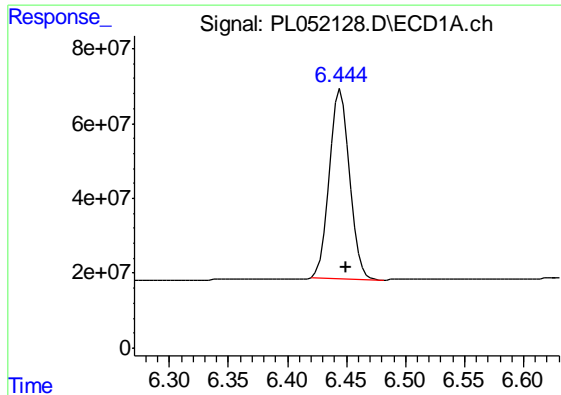
#18 Endrin aldehyde

R.T.: 6.233 min
Delta R.T.: -0.005 min
Response: 528442791
Conc: 45.43 ng/ml



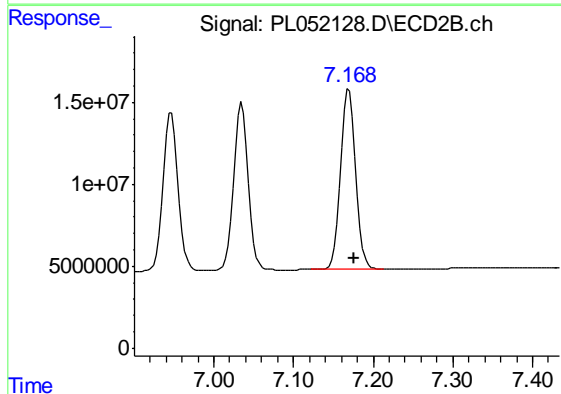
#18 Endrin aldehyde

R.T.: 6.947 min
Delta R.T.: -0.006 min
Response: 131612330
Conc: 46.57 ng/ml



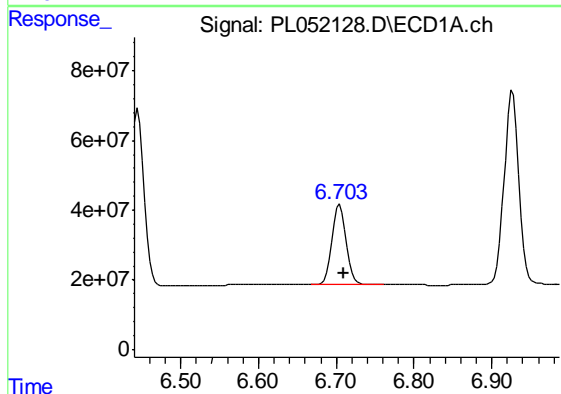
#19 Endosulfan Sulfate

R.T.: 6.445 min
Delta R.T.: -0.004 min
Response: 616124783
Conc: 47.36 ng/ml



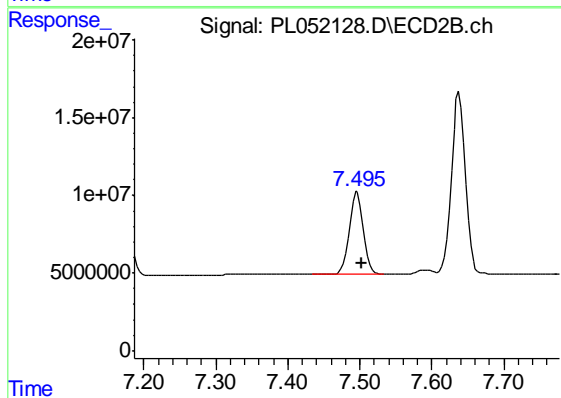
#19 Endosulfan Sulfate

R.T.: 7.170 min
Delta R.T.: -0.006 min
Response: 148296556
Conc: 48.02 ng/ml



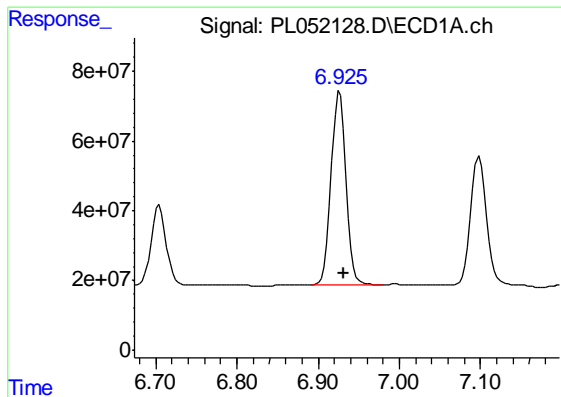
#20 Methoxychlor

R.T.: 6.704 min
Delta R.T.: -0.005 min
Response: 294312388
Conc: 43.41 ng/ml



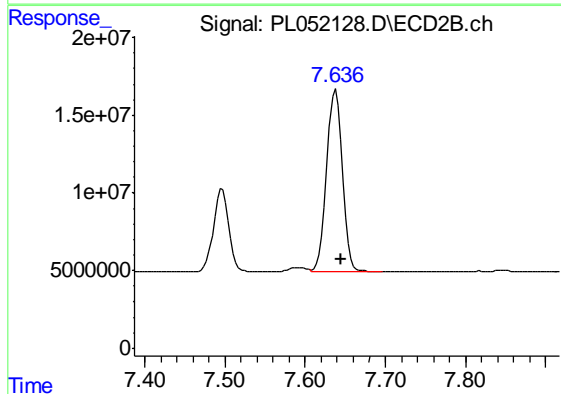
#20 Methoxychlor

R.T.: 7.496 min
Delta R.T.: -0.005 min
Response: 71582551
Conc: 42.68 ng/ml



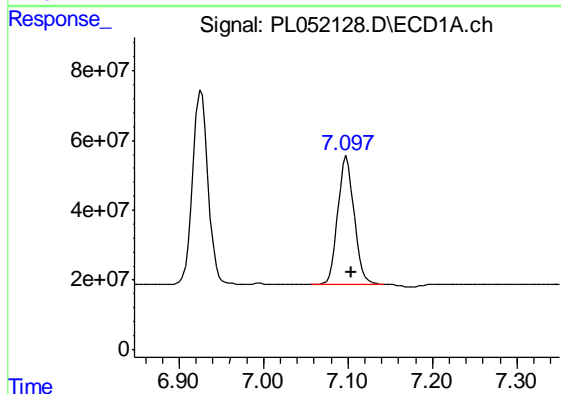
#21 Endrin ketone

R.T.: 6.926 min
Delta R.T.: -0.005 min
Response: 700463878
Conc: 49.51 ng/ml



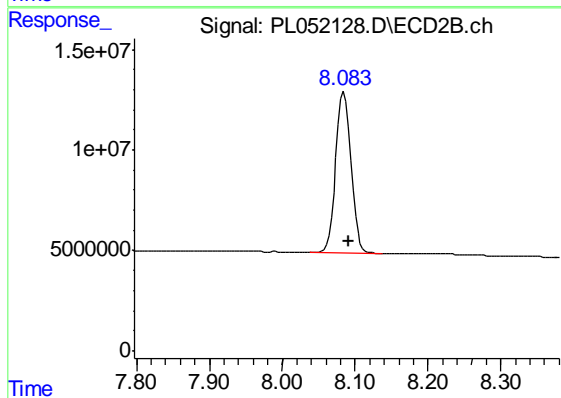
#21 Endrin ketone

R.T.: 7.638 min
Delta R.T.: -0.006 min
Response: 157029216
Conc: 49.08 ng/ml



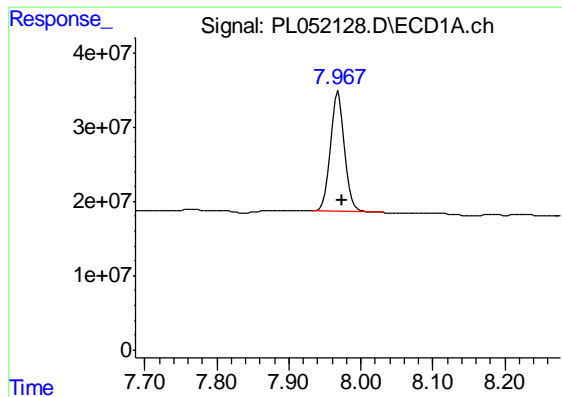
#22 Mirex

R.T.: 7.098 min
Delta R.T.: -0.006 min
Response: 489559328
Conc: 46.24 ng/ml



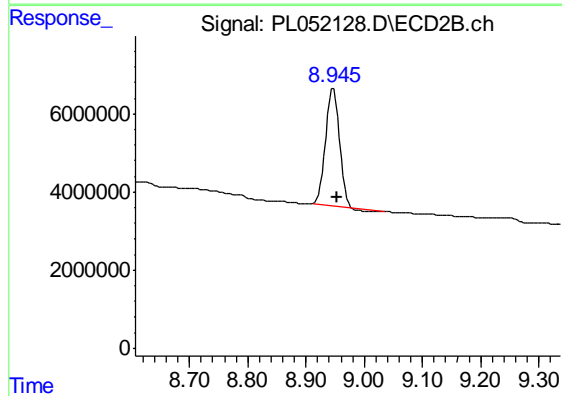
#22 Mirex

R.T.: 8.085 min
Delta R.T.: -0.007 min
Response: 117285179
Conc: 48.21 ng/ml



#28 Decachlorobiphenyl

R.T.: 7.969 min
Delta R.T.: -0.006 min
Response: 220240871
Conc: 18.15 ng/ml



#28 Decachlorobiphenyl

R.T.: 8.947 min
Delta R.T.: -0.008 min
Response: 50191500
Conc: 16.49 ng/ml