

Data Path : Z:\pestpcbsrv\HPCHEM1\ECD\_L\Data\PL083119\  
Data File : PL052135.D  
Signal(s) : Signal #1: ECD1A.ch Signal #2: ECD2B.ch  
Acq On : 31 Aug 2019 19:24  
Operator : SG\AJ  
Sample : K4554-20  
Misc :  
ALS Vial : 26 Sample Multiplier: 1

Integration File signal 1: autoint1.e  
Integration File signal 2: autoint2.e  
Quant Time: Aug 31 22:43:57 2019  
Quant Method : Z:\pestpcbsrv\HPCHEM1\ECD\_L\methods\PL081919.M  
Quant Title : GC Extractables  
QLast Update : Mon Aug 19 18:03:07 2019  
Response via : Initial Calibration  
Integrator: ChemStation

Volume Inj. : 1 µl  
Signal #1 Phase : ZB-MR2 Signal #2 Phase: ZB-MR1  
Signal #1 Info : 30M x 0.32mm x0.2 Signal #2 Info : 30M x 0.32mm x0.5µm

Compound	RT#1	RT#2	Resp#1	Resp#2	ng/ml	ng/ml
----------	------	------	--------	--------	-------	-------

-----  
System Monitoring Compounds

1) SA Tetrachlo...	3.313	3.923	168.8E6	44029530	19.724	20.153
28) SA Decachlor...	7.969	8.945	204.3E6	49781202	16.835	16.355m

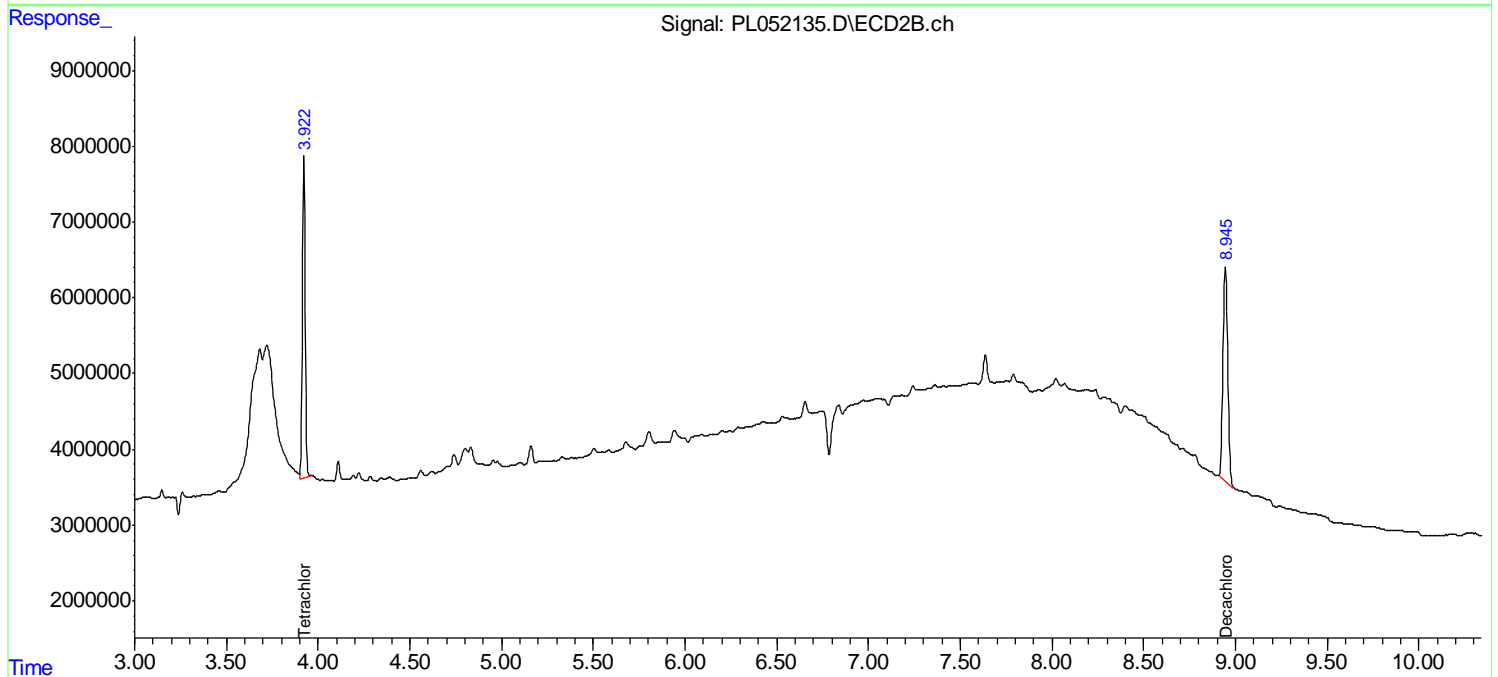
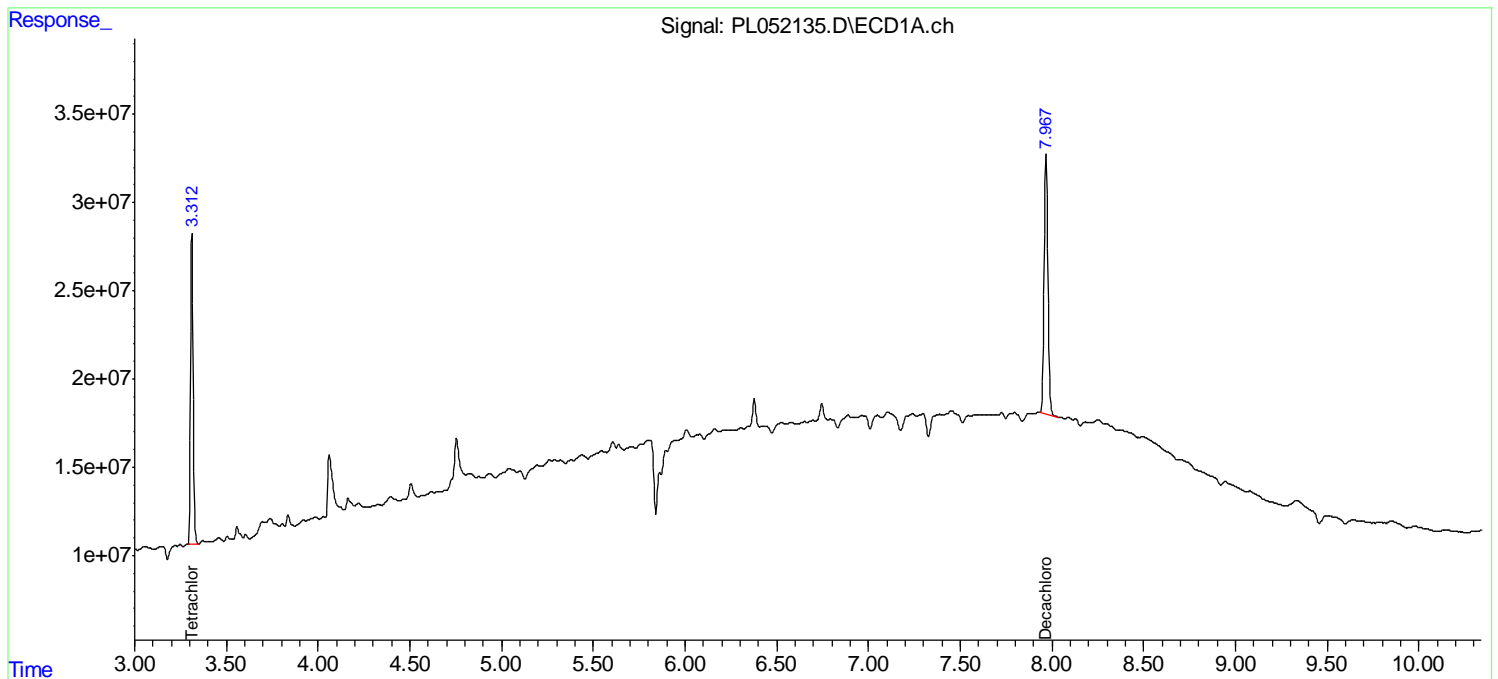
Target Compounds  
-----

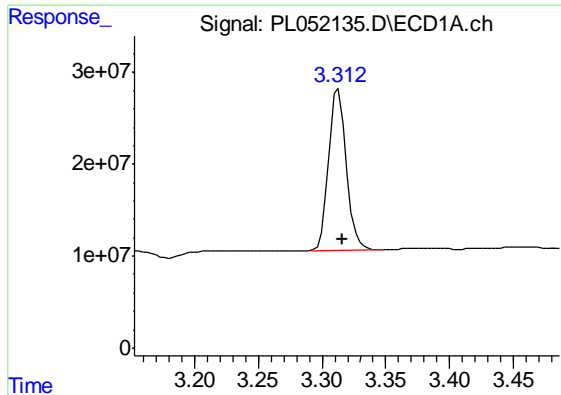
(f)=RT Delta > 1/2 Window (#)=Amounts differ by > 25% (m)=manual int.

Data Path : Z:\pestpcbsrv\HPCHEM1\ECD\_L\Data\PL083119\  
 Data File : PL052135.D  
 Signal(s) : Signal #1: ECD1A.ch Signal #2: ECD2B.ch  
 Acq On : 31 Aug 2019 19:24  
 Operator : SG\AJ  
 Sample : K4554-20  
 Misc :  
 ALS Vial : 26 Sample Multiplier: 1

Integration File signal 1: autoint1.e  
 Integration File signal 2: autoint2.e  
 Quant Time: Aug 31 22:43:57 2019  
 Quant Method : Z:\pestpcbsrv\HPCHEM1\ECD\_L\methods\PL081919.M  
 Quant Title : GC Extractables  
 QLast Update : Mon Aug 19 18:03:07 2019  
 Response via : Initial Calibration  
 Integrator: ChemStation

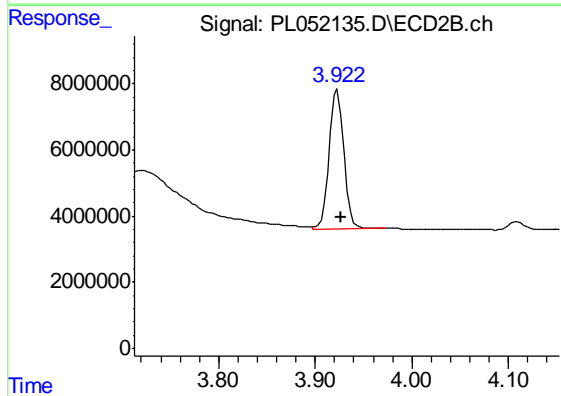
Volume Inj. : 1 µl  
 Signal #1 Phase : ZB-MR2 Signal #2 Phase: ZB-MR1  
 Signal #1 Info : 30M x 0.32mm x0.2 Signal #2 Info : 30M x 0.32mm x0.5µm





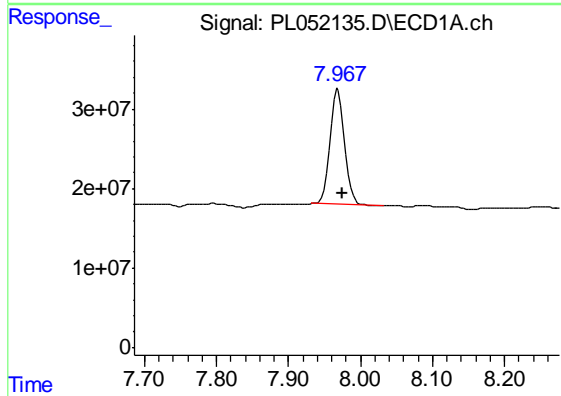
#1 Tetrachloro-m-xylene

R.T.: 3.313 min  
Delta R.T.: -0.003 min  
Response: 168813140  
Conc: 19.72 ng/ml



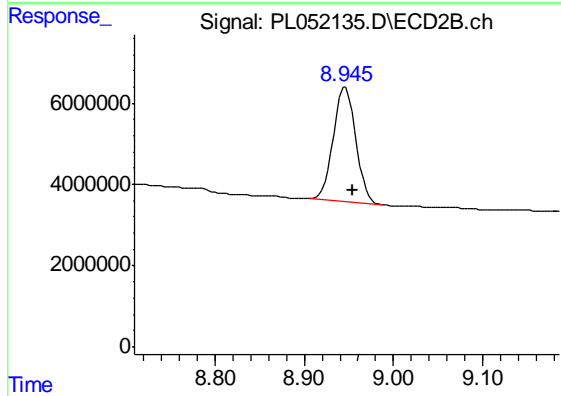
#1 Tetrachloro-m-xylene

R.T.: 3.923 min  
Delta R.T.: -0.003 min  
Response: 44029530  
Conc: 20.15 ng/ml



#28 Decachlorobiphenyl

R.T.: 7.969 min  
Delta R.T.: -0.006 min  
Response: 204338519  
Conc: 16.83 ng/ml



#28 Decachlorobiphenyl

R.T.: 8.945 min  
Delta R.T.: -0.009 min  
Response: 49781202  
Conc: 16.35 ng/ml m