

Data Path : Z:\pestpcbsrv\HPCHEM1\ECD_L\Data\PL083119\
Data File : PL052142.D
Signal(s) : Signal #1: ECD1A.ch Signal #2: ECD2B.ch
Acq On : 31 Aug 2019 21:03
Operator : SG\AJ
Sample : K4554-43
Misc :
ALS Vial : 33 Sample Multiplier: 1

Integration File signal 1: autoint1.e
Integration File signal 2: autoint2.e
Quant Time: Aug 31 22:45:11 2019
Quant Method : Z:\pestpcbsrv\HPCHEM1\ECD_L\methods\PL081919.M
Quant Title : GC Extractables
QLast Update : Mon Aug 19 18:03:07 2019
Response via : Initial Calibration
Integrator: ChemStation

Volume Inj. : 1 µl
Signal #1 Phase : ZB-MR2 Signal #2 Phase: ZB-MR1
Signal #1 Info : 30M x 0.32mm x0.2 Signal #2 Info : 30M x 0.32mm x0.5µm

Compound	RT#1	RT#2	Resp#1	Resp#2	ng/ml	ng/ml
----------	------	------	--------	--------	-------	-------

System Monitoring Compounds

1) SA Tetrachlo...	3.312	3.923	100.6E6	26905013	11.751	12.315
28) SA Decachlor...	7.968	8.943	108.1E6	28059305	8.906	9.218m

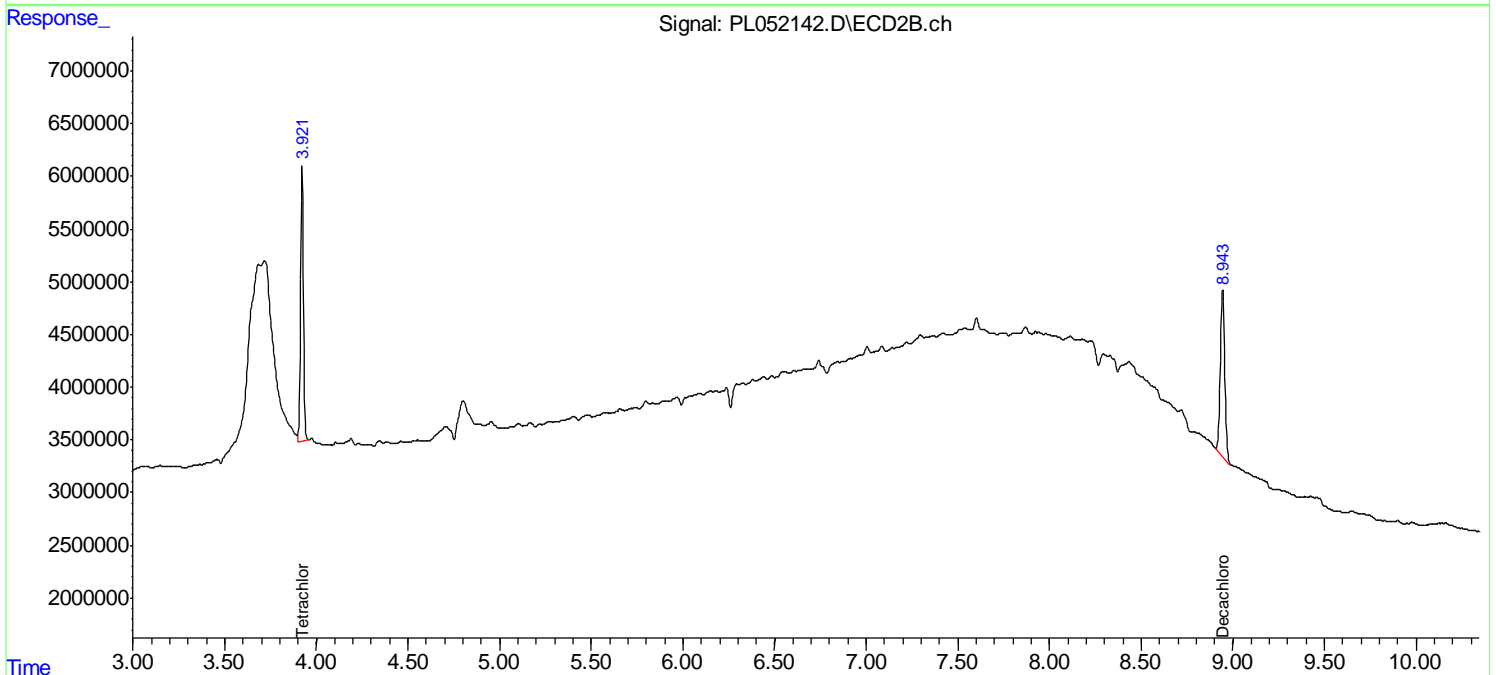
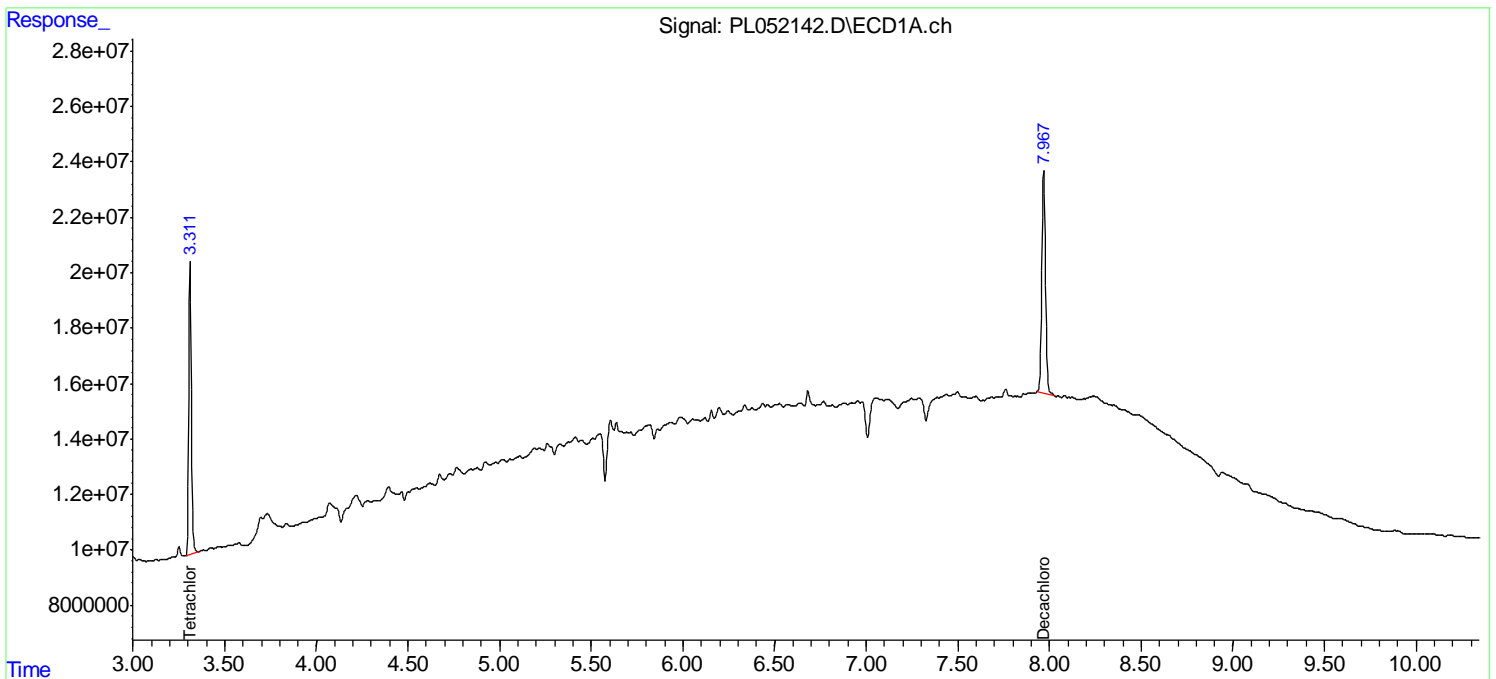
Target Compounds

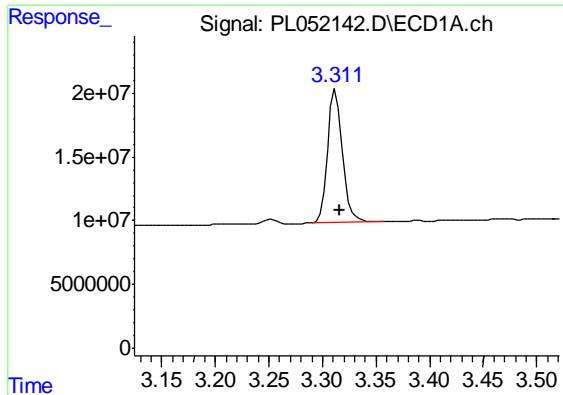
(f)=RT Delta > 1/2 Window (#)=Amounts differ by > 25% (m)=manual int.

Data Path : Z:\pestpcbsrv\HPCHEM1\ECD_L\Data\PL083119\
 Data File : PL052142.D
 Signal(s) : Signal #1: ECD1A.ch Signal #2: ECD2B.ch
 Acq On : 31 Aug 2019 21:03
 Operator : SG\AJ
 Sample : K4554-43
 Misc :
 ALS Vial : 33 Sample Multiplier: 1

Integration File signal 1: autoint1.e
 Integration File signal 2: autoint2.e
 Quant Time: Aug 31 22:45:11 2019
 Quant Method : Z:\pestpcbsrv\HPCHEM1\ECD_L\methods\PL081919.M
 Quant Title : GC Extractables
 QLast Update : Mon Aug 19 18:03:07 2019
 Response via : Initial Calibration
 Integrator: ChemStation

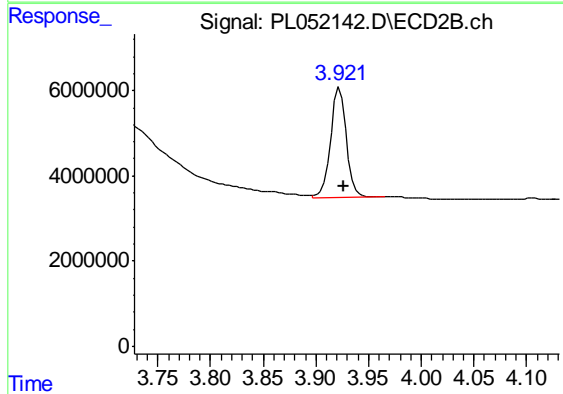
Volume Inj. : 1 µl
 Signal #1 Phase : ZB-MR2 Signal #2 Phase: ZB-MR1
 Signal #1 Info : 30M x 0.32mm x0.2 Signal #2 Info : 30M x 0.32mm x0.5µm





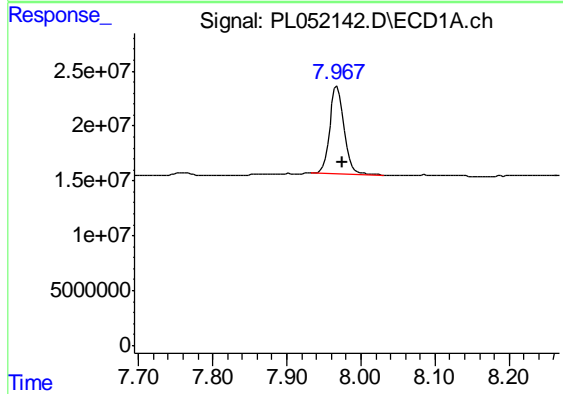
#1 Tetrachloro-m-xylene

R.T.: 3.312 min
Delta R.T.: -0.004 min
Response: 100568719
Conc: 11.75 ng/ml



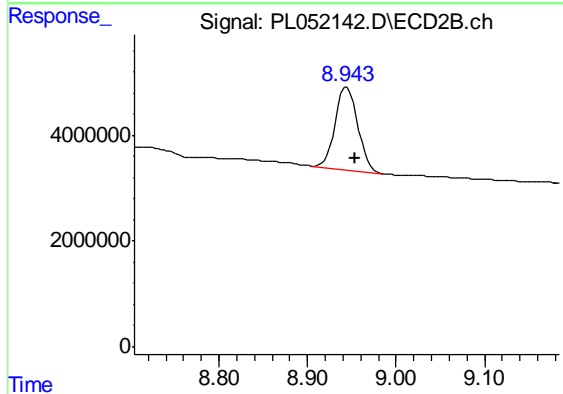
#1 Tetrachloro-m-xylene

R.T.: 3.923 min
Delta R.T.: -0.004 min
Response: 26905013
Conc: 12.31 ng/ml



#28 Decachlorobiphenyl

R.T.: 7.968 min
Delta R.T.: -0.006 min
Response: 108095889
Conc: 8.91 ng/ml



#28 Decachlorobiphenyl

R.T.: 8.943 min
Delta R.T.: -0.011 min
Response: 28059305
Conc: 9.22 ng/ml m