

Data Path : Z:\pestpcbsrv\HPCHEM1\ECD_L\Data\PL083119\
 Data File : PL052143.D
 Signal(s) : Signal #1: ECD1A.ch Signal #2: ECD2B.ch
 Acq On : 31 Aug 2019 21:17
 Operator : SG\AJ
 Sample : K4554-45
 Misc :
 ALS Vial : 34 Sample Multiplier: 1

Integration File signal 1: autoint1.e
 Integration File signal 2: autoint2.e
 Quant Time: Aug 31 22:45:22 2019
 Quant Method : Z:\pestpcbsrv\HPCHEM1\ECD_L\methods\PL081919.M
 Quant Title : GC Extractables
 QLast Update : Mon Aug 19 18:03:07 2019
 Response via : Initial Calibration
 Integrator: ChemStation

Volume Inj. : 1 µl
 Signal #1 Phase : ZB-MR2 Signal #2 Phase: ZB-MR1
 Signal #1 Info : 30M x 0.32mm x0.2 Signal #2 Info : 30M x 0.32mm x0.5µm

Compound	RT#1	RT#2	Resp#1	Resp#2	ng/ml	ng/ml
----------	------	------	--------	--------	-------	-------

 System Monitoring Compounds

1) SA Tetrachlo...	3.312	3.923	183.1E6	47558064	21.391	21.768
28) SA Decachlor...	7.968	8.944	199.0E6	48517192	16.394	15.939m

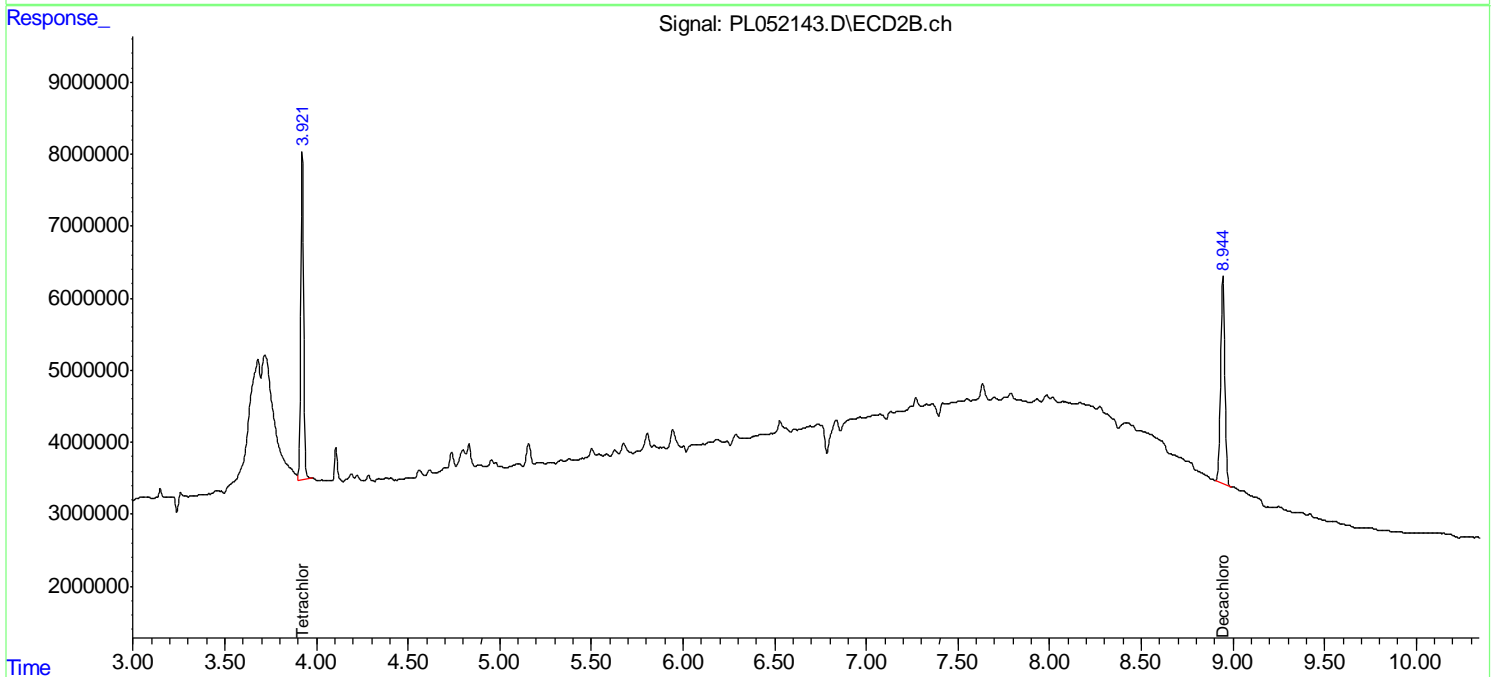
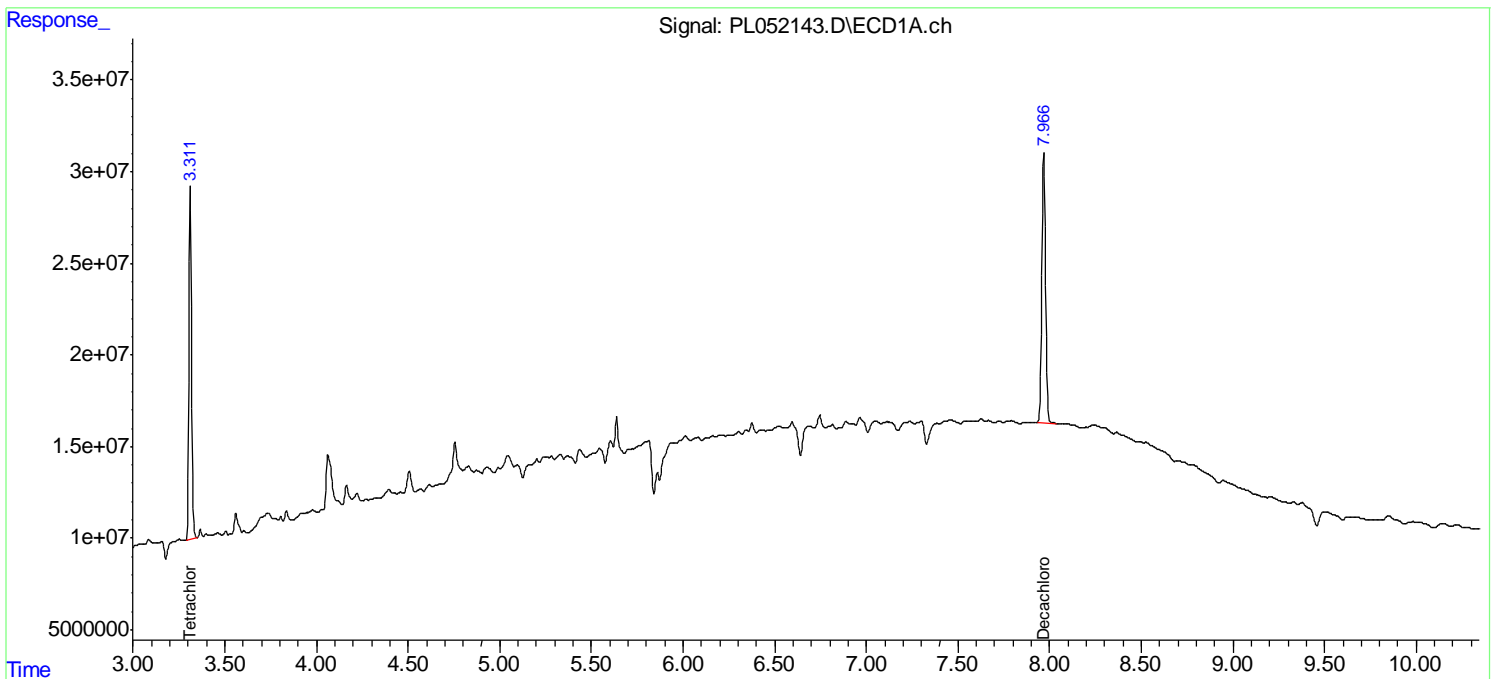
Target Compounds

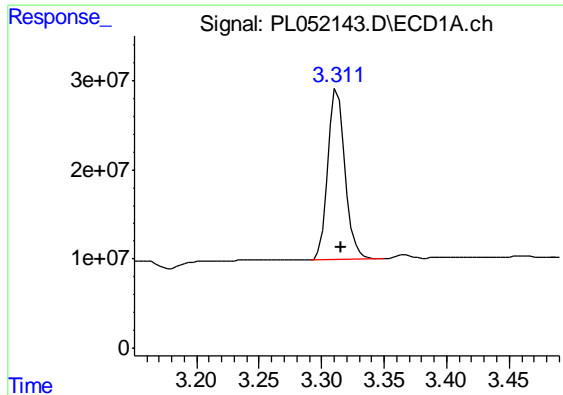
(f)=RT Delta > 1/2 Window (#)=Amounts differ by > 25% (m)=manual int.

Data Path : Z:\pestpcbsrv\HPCHEM1\ECD_L\Data\PL083119\
 Data File : PL052143.D
 Signal(s) : Signal #1: ECD1A.ch Signal #2: ECD2B.ch
 Acq On : 31 Aug 2019 21:17
 Operator : SG\AJ
 Sample : K4554-45
 Misc :
 ALS Vial : 34 Sample Multiplier: 1

Integration File signal 1: autoint1.e
 Integration File signal 2: autoint2.e
 Quant Time: Aug 31 22:45:22 2019
 Quant Method : Z:\pestpcbsrv\HPCHEM1\ECD_L\methods\PL081919.M
 Quant Title : GC Extractables
 QLast Update : Mon Aug 19 18:03:07 2019
 Response via : Initial Calibration
 Integrator: ChemStation

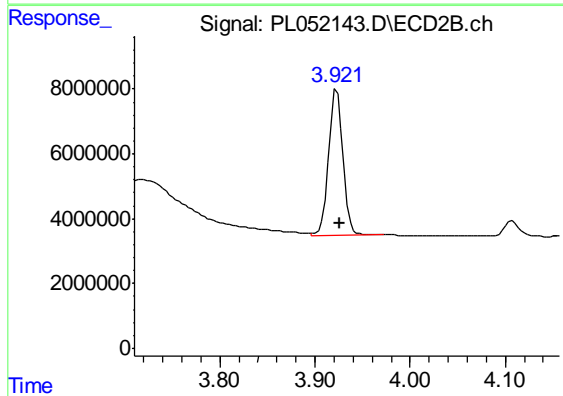
Volume Inj. : 1 µl
 Signal #1 Phase : ZB-MR2 Signal #2 Phase: ZB-MR1
 Signal #1 Info : 30M x 0.32mm x0.2 Signal #2 Info : 30M x 0.32mm x0.5µm





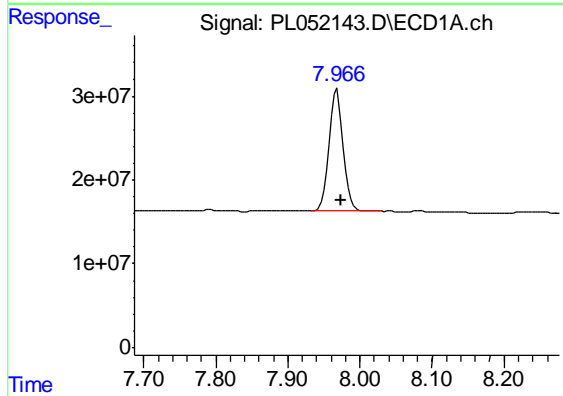
#1 Tetrachloro-m-xylene

R.T.: 3.312 min
Delta R.T.: -0.004 min
Response: 183075580
Conc: 21.39 ng/ml



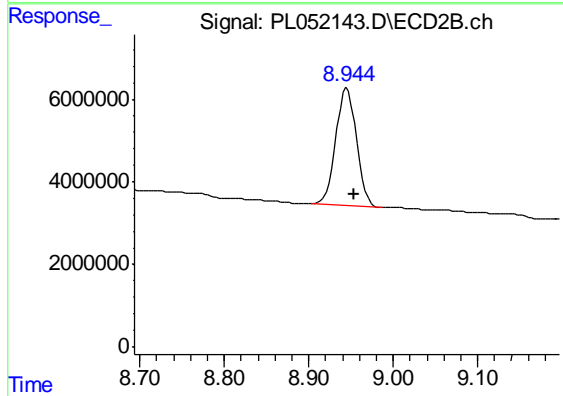
#1 Tetrachloro-m-xylene

R.T.: 3.923 min
Delta R.T.: -0.004 min
Response: 47558064
Conc: 21.77 ng/ml



#28 Decachlorobiphenyl

R.T.: 7.968 min
Delta R.T.: -0.007 min
Response: 198982318
Conc: 16.39 ng/ml



#28 Decachlorobiphenyl

R.T.: 8.944 min
Delta R.T.: -0.010 min
Response: 48517192
Conc: 15.94 ng/ml m