

Data Path : Z:\pestpcbsrv\HPCHEM1\ECD_L\Data\PL083119\
 Data File : PL052149.D
 Signal(s) : Signal #1: ECD1A.ch Signal #2: ECD2B.ch
 Acq On : 31 Aug 2019 22:42
 Operator : SG\AJ
 Sample : PSTDCCC050
 Misc :
 ALS Vial : 4 Sample Multiplier: 1

Integration File signal 1: autoint1.e
 Integration File signal 2: autoint2.e
 Quant Time: Sep 01 00:49:38 2019
 Quant Method : Z:\pestpcbsrv\HPCHEM1\ECD_L\methods\PL081919.M
 Quant Title : GC Extractables
 QLast Update : Mon Aug 19 18:03:07 2019
 Response via : Initial Calibration
 Integrator: ChemStation

Volume Inj. : 1 µl
 Signal #1 Phase : ZB-MR2 Signal #2 Phase: ZB-MR1
 Signal #1 Info : 30M x 0.32mm x0.2 Signal #2 Info : 30M x 0.32mm x0.5µm

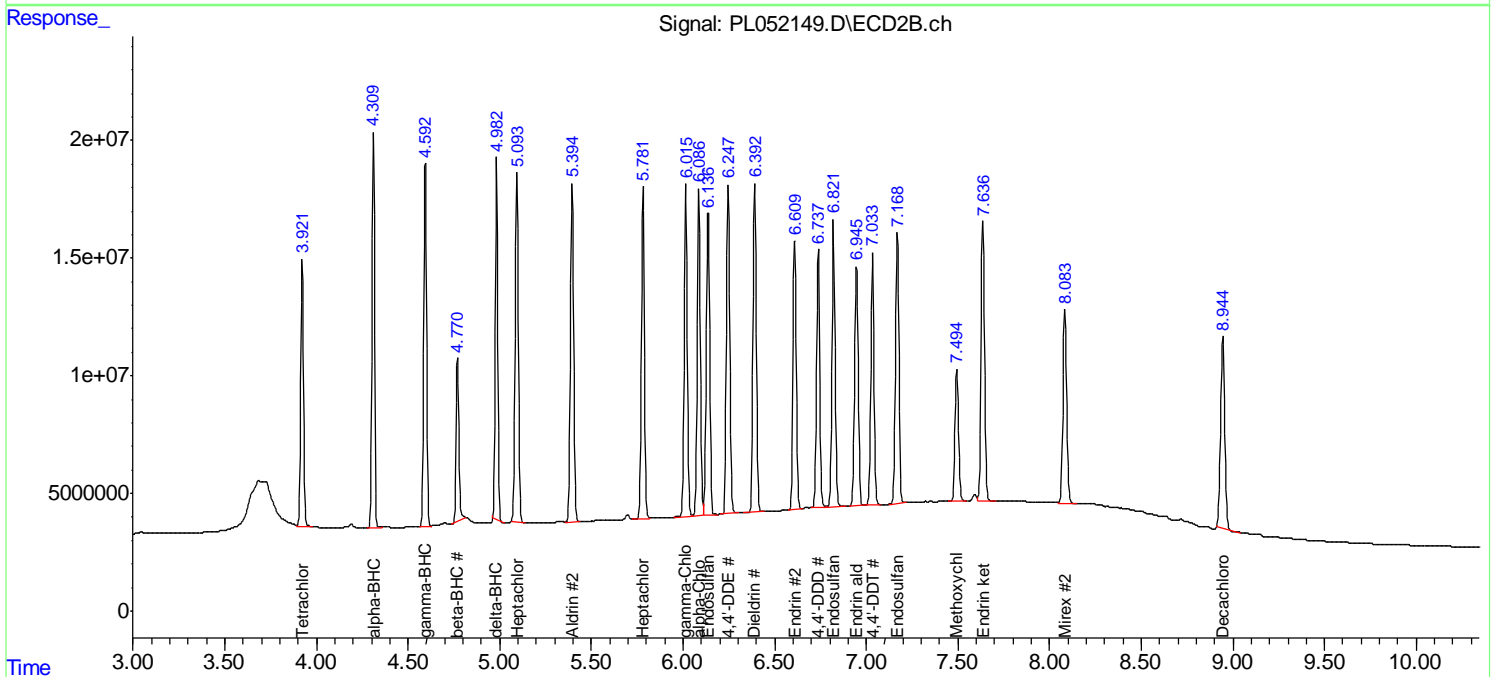
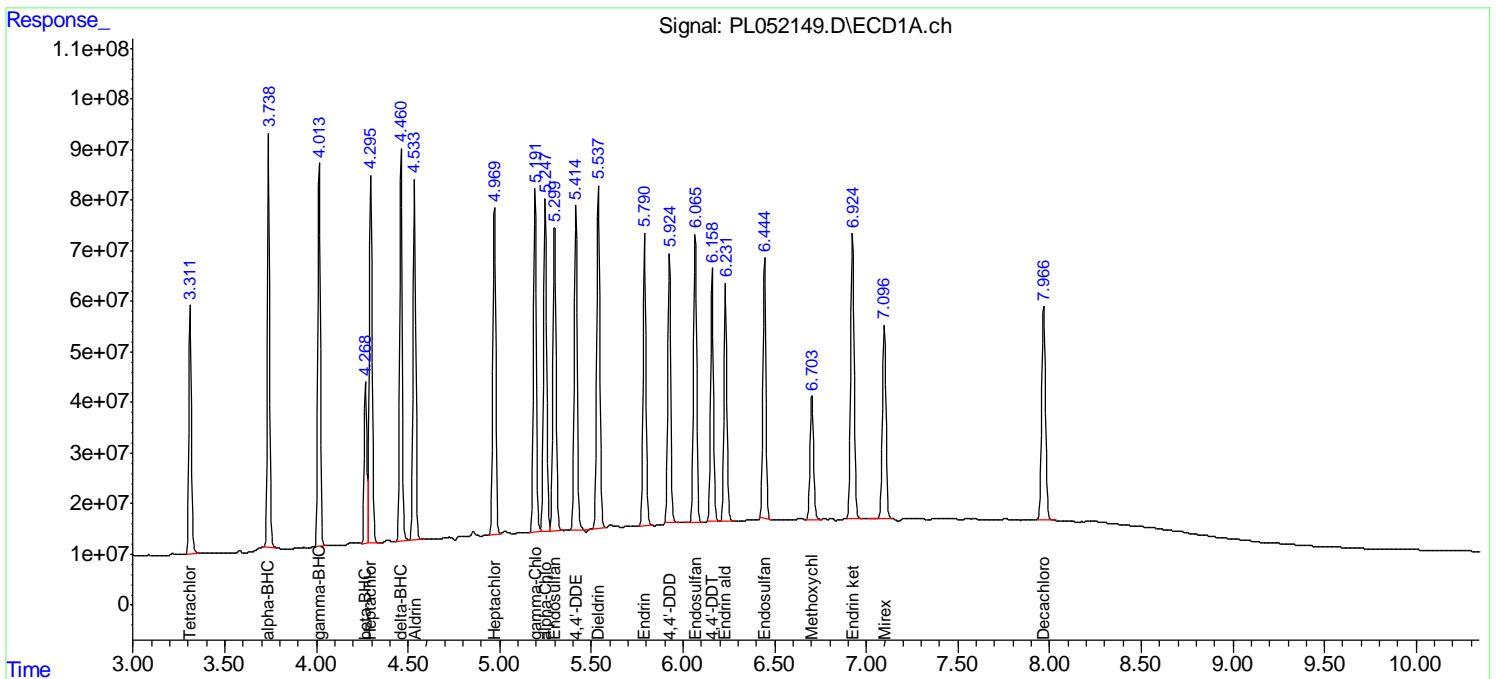
| | Compound | RT#1 | RT#2 | Resp#1 | Resp#2 | ng/ml | ng/ml |
|-----------------------------|-----------------|-------|-------|---------|----------|--------|---------|
| ----- | | | | | | | |
| System Monitoring Compounds | | | | | | | |
| 1) | SA Tetrachlo... | 3.312 | 3.923 | 458.4E6 | 115.4E6 | 53.554 | 52.834 |
| 28) | SA Decachlor... | 7.968 | 8.945 | 590.9E6 | 135.1E6 | 48.682 | 44.385 |
| Target Compounds | | | | | | | |
| 2) | A alpha-BHC | 3.739 | 4.311 | 779.1E6 | 170.0E6 | 53.768 | 52.743 |
| 3) | MA gamma-BHC... | 4.015 | 4.594 | 741.0E6 | 162.3E6 | 56.320 | 51.553 |
| 4) | MA Heptachlor | 4.297 | 5.094 | 794.1E6 | 173.7E6 | 52.457 | 49.541 |
| 5) | MB Aldrin | 4.535 | 5.395 | 766.9E6 | 170.5E6 | 53.068 | 52.009 |
| 6) | B beta-BHC | 4.269 | 4.771 | 306.2E6 | 76558372 | 53.621 | 52.530 |
| 7) | B delta-BHC | 4.461 | 4.984 | 794.0E6 | 164.5E6 | 53.402 | 52.574 |
| 8) | B Heptachlo... | 4.971 | 5.782 | 730.8E6 | 171.6E6 | 52.254 | 50.840 |
| 9) | A Endosulfan I | 5.300 | 6.137 | 712.9E6 | 164.1E6 | 53.030 | 50.764 |
| 10) | B gamma-Chl... | 5.192 | 6.016 | 777.0E6 | 177.4E6 | 52.034 | 48.589 |
| 11) | B alpha-Chl... | 5.248 | 6.087 | 752.1E6 | 176.4E6 | 51.969 | 51.117 |
| 12) | B 4,4'-DDE | 5.415 | 6.248 | 757.5E6 | 175.9E6 | 55.346 | 49.975 |
| 13) | MA Dieldrin | 5.539 | 6.393 | 779.7E6 | 174.0E6 | 51.280 | 50.815 |
| 14) | MA Endrin | 5.791 | 6.610 | 696.5E6 | 149.0E6 | 47.750 | 49.253 |
| 15) | B Endosulfa... | 6.066 | 6.823 | 690.2E6 | 159.7E6 | 49.607 | 48.441 |
| 16) | A 4,4'-DDD | 5.926 | 6.738 | 619.0E6 | 140.4E6 | 50.549 | 51.865 |
| 17) | MA 4,4'-DDT | 6.159 | 7.033 | 597.8E6 | 137.5E6 | 46.883 | 46.981m |
| 18) | B Endrin al... | 6.232 | 6.947 | 572.2E6 | 137.0E6 | 49.187 | 48.467 |
| 19) | B Endosulfa... | 6.445 | 7.169 | 623.5E6 | 149.9E6 | 47.928 | 48.545 |
| 20) | A Methoxychlor | 6.704 | 7.495 | 312.0E6 | 75468567 | 46.013 | 44.997 |
| 21) | B Endrin ke... | 6.925 | 7.637 | 717.5E6 | 163.5E6 | 50.719 | 51.108 |
| 22) | Mirex | 7.098 | 8.084 | 514.9E6 | 121.9E6 | 48.637 | 50.116 |

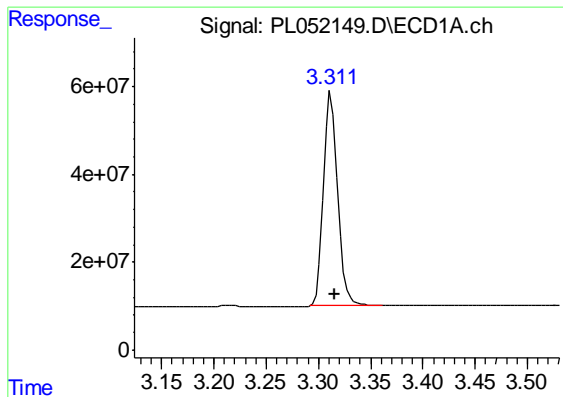
(f)=RT Delta > 1/2 Window (#)=Amounts differ by > 25% (m)=manual int.

Data Path : Z:\pestpcbsrv\HPCHEM1\ECD_L\Data\PL083119\
 Data File : PL052149.D
 Signal(s) : Signal #1: ECD1A.ch Signal #2: ECD2B.ch
 Acq On : 31 Aug 2019 22:42
 Operator : SG\AJ
 Sample : PSTDCCC050
 Misc :
 ALS Vial : 4 Sample Multiplier: 1

Integration File signal 1: autoint1.e
 Integration File signal 2: autoint2.e
 Quant Time: Sep 01 00:49:38 2019
 Quant Method : Z:\pestpcbsrv\HPCHEM1\ECD_L\methods\PL081919.M
 Quant Title : GC Extractables
 QLast Update : Mon Aug 19 18:03:07 2019
 Response via : Initial Calibration
 Integrator: ChemStation

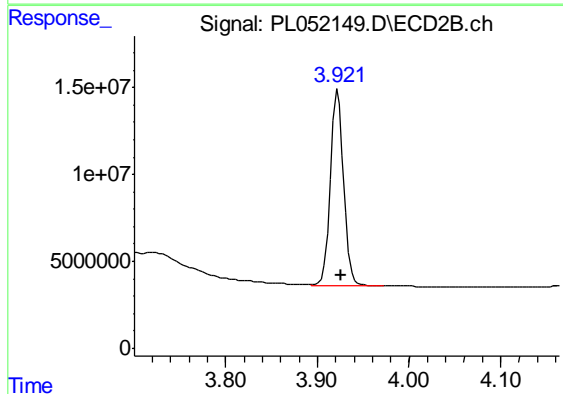
Volume Inj. : 1 µl
 Signal #1 Phase : ZB-MR2 Signal #2 Phase: ZB-MR1
 Signal #1 Info : 30M x 0.32mm x0.2 Signal #2 Info : 30M x 0.32mm x0.5µm





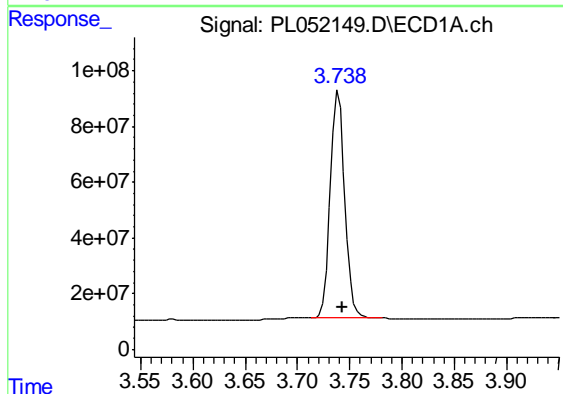
#1 Tetrachloro-m-xylene

R.T.: 3.312 min
Delta R.T.: -0.004 min
Response: 458352539
Conc: 53.55 ng/ml



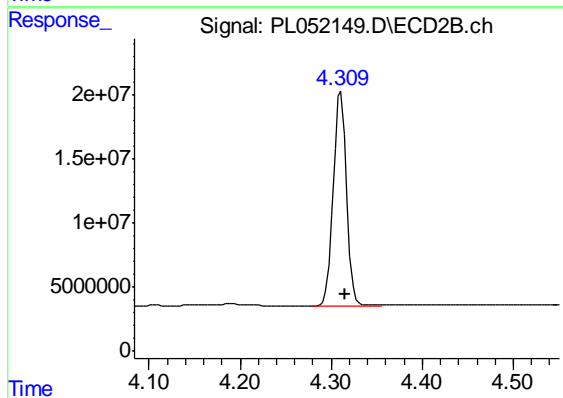
#1 Tetrachloro-m-xylene

R.T.: 3.923 min
Delta R.T.: -0.004 min
Response: 115431711
Conc: 52.83 ng/ml



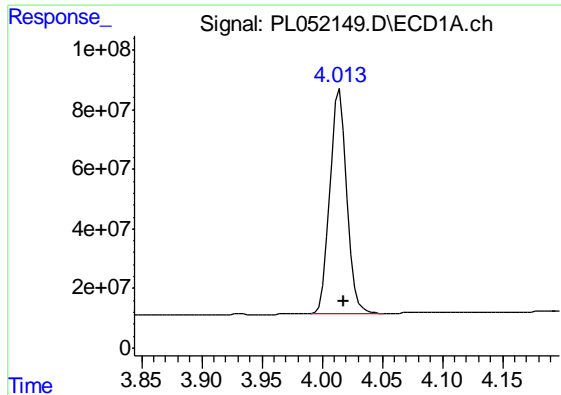
#2 alpha-BHC

R.T.: 3.739 min
Delta R.T.: -0.003 min
Response: 779079676
Conc: 53.77 ng/ml



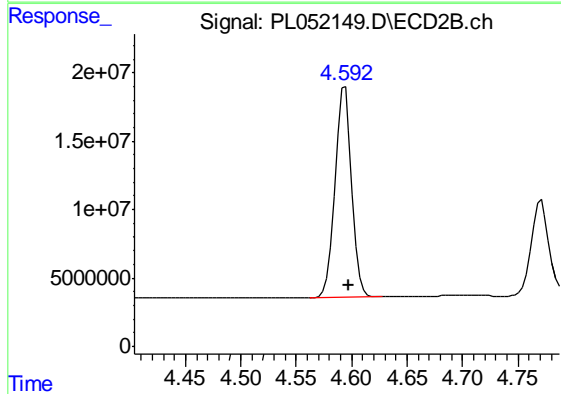
#2 alpha-BHC

R.T.: 4.311 min
Delta R.T.: -0.004 min
Response: 169957567
Conc: 52.74 ng/ml



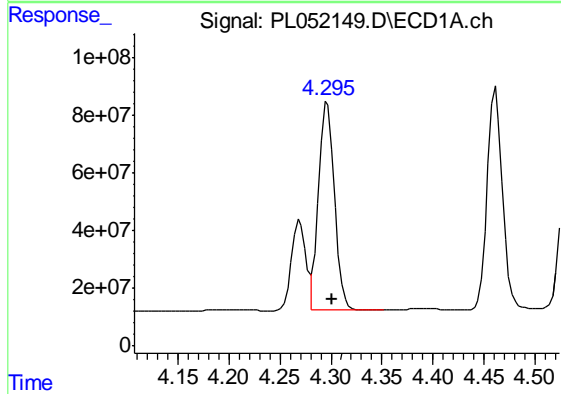
#3 gamma-BHC (Lindane)

R.T.: 4.015 min
Delta R.T.: -0.003 min
Response: 740976661
Conc: 56.32 ng/ml



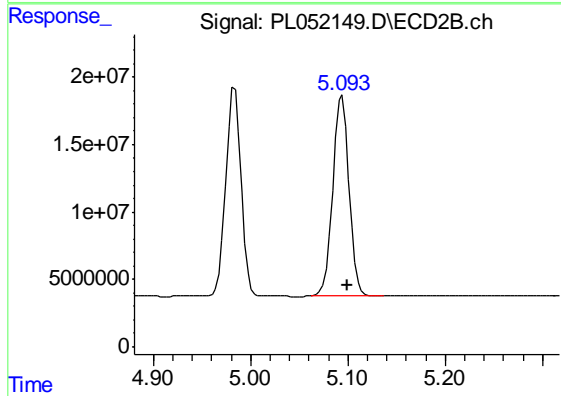
#3 gamma-BHC (Lindane)

R.T.: 4.594 min
Delta R.T.: -0.004 min
Response: 162305333
Conc: 51.55 ng/ml



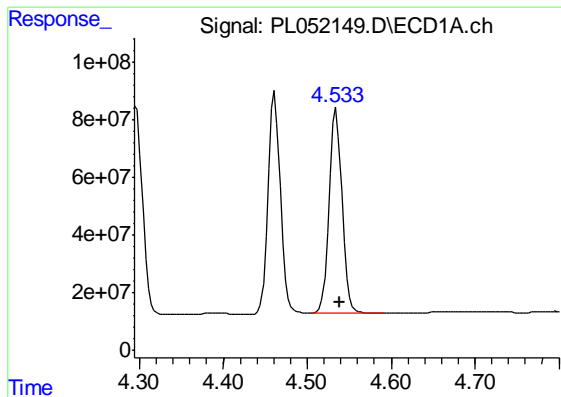
#4 Heptachlor

R.T.: 4.297 min
Delta R.T.: -0.004 min
Response: 794127258
Conc: 52.46 ng/ml



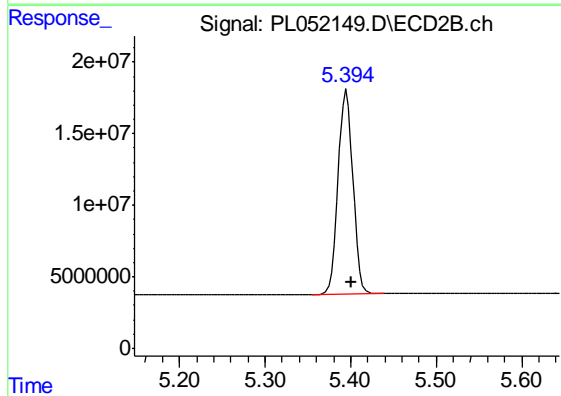
#4 Heptachlor

R.T.: 5.094 min
Delta R.T.: -0.005 min
Response: 173736612
Conc: 49.54 ng/ml



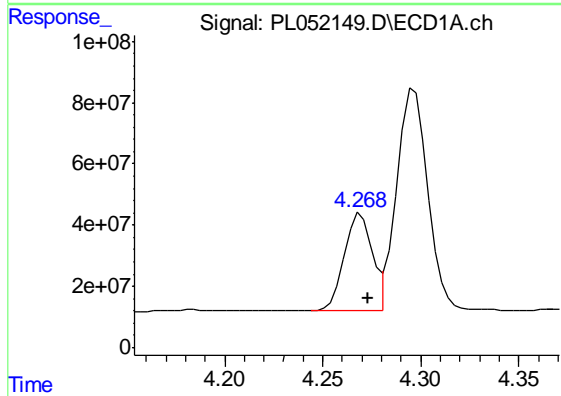
#5 Aldrin

R.T.: 4.535 min
Delta R.T.: -0.004 min
Response: 766870030
Conc: 53.07 ng/ml



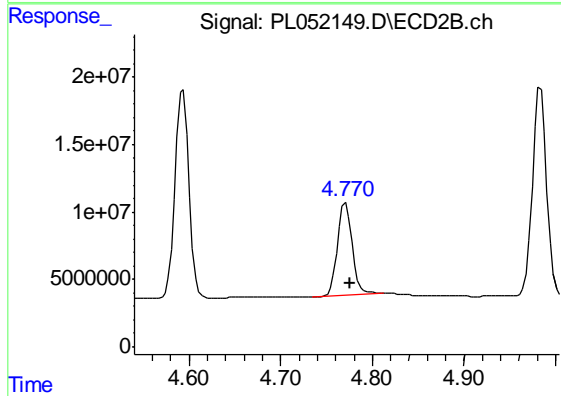
#5 Aldrin

R.T.: 5.395 min
Delta R.T.: -0.006 min
Response: 170530710
Conc: 52.01 ng/ml



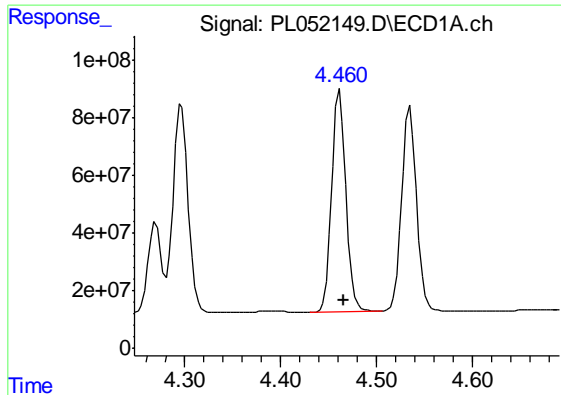
#6 beta-BHC

R.T.: 4.269 min
Delta R.T.: -0.004 min
Response: 306180353
Conc: 53.62 ng/ml



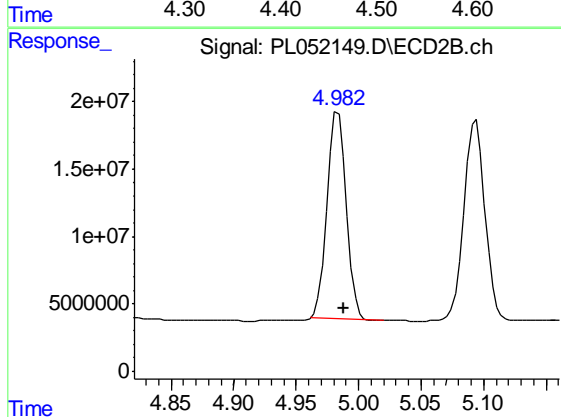
#6 beta-BHC

R.T.: 4.771 min
Delta R.T.: -0.005 min
Response: 76558372
Conc: 52.53 ng/ml



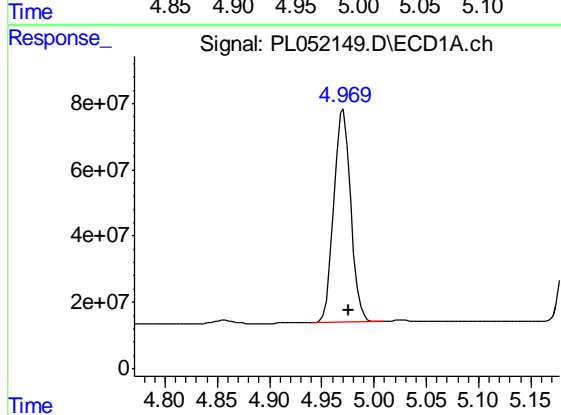
#7 delta-BHC

R.T.: 4.461 min
Delta R.T.: -0.004 min
Response: 794032329
Conc: 53.40 ng/ml



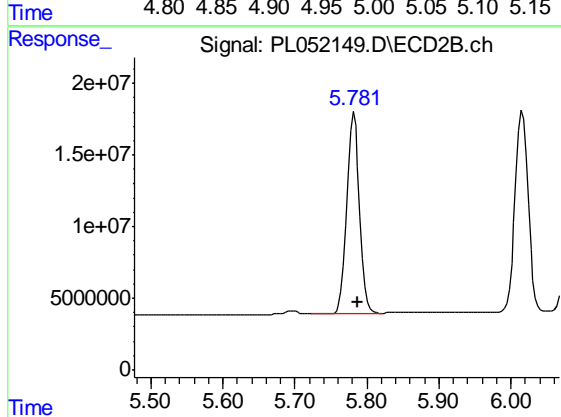
#7 delta-BHC

R.T.: 4.984 min
Delta R.T.: -0.004 min
Response: 164542389
Conc: 52.57 ng/ml



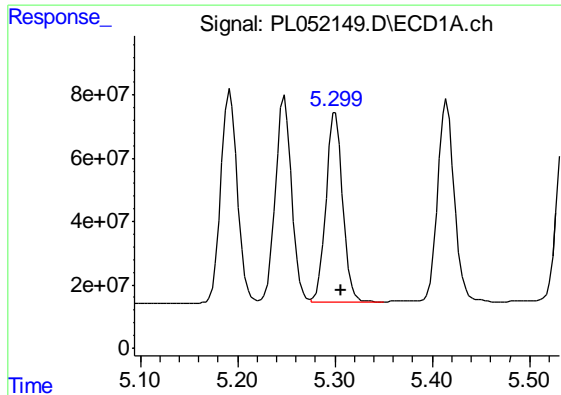
#8 Heptachlor epoxide

R.T.: 4.971 min
Delta R.T.: -0.005 min
Response: 730791094
Conc: 52.25 ng/ml



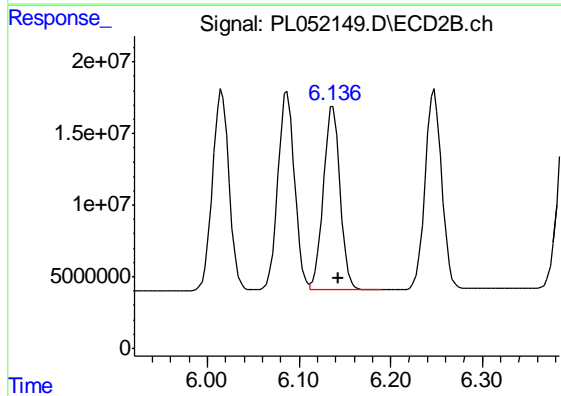
#8 Heptachlor epoxide

R.T.: 5.782 min
Delta R.T.: -0.005 min
Response: 171574154
Conc: 50.84 ng/ml



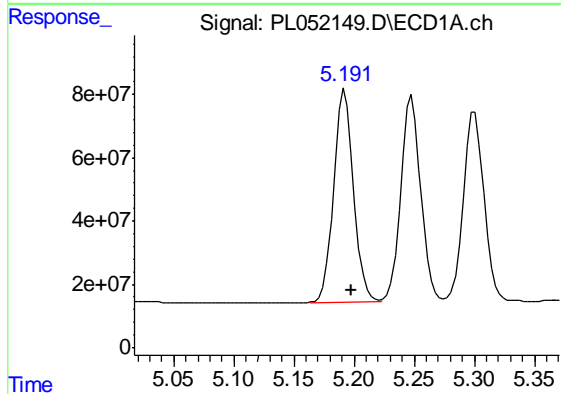
#9 Endosulfan I

R.T.: 5.300 min
Delta R.T.: -0.005 min
Response: 712916921
Conc: 53.03 ng/ml



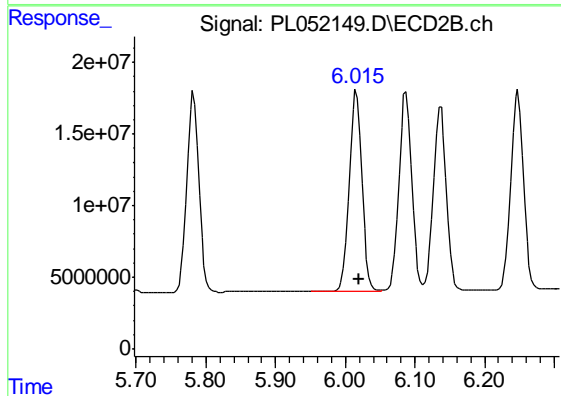
#9 Endosulfan I

R.T.: 6.137 min
Delta R.T.: -0.006 min
Response: 164128602
Conc: 50.76 ng/ml



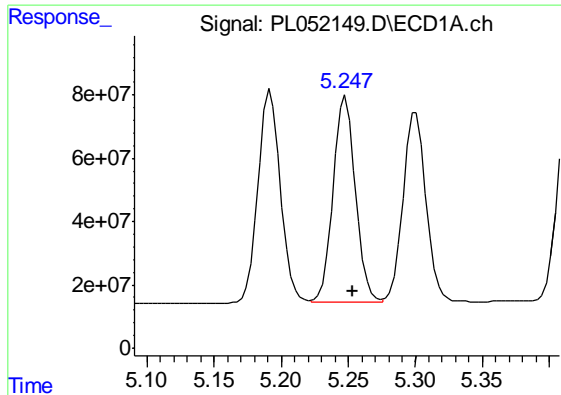
#10 gamma-Chlordane

R.T.: 5.192 min
Delta R.T.: -0.005 min
Response: 776977173
Conc: 52.03 ng/ml



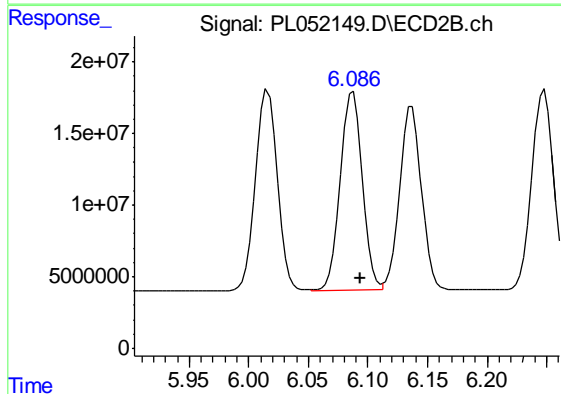
#10 gamma-Chlordane

R.T.: 6.016 min
Delta R.T.: -0.004 min
Response: 177400515
Conc: 48.59 ng/ml



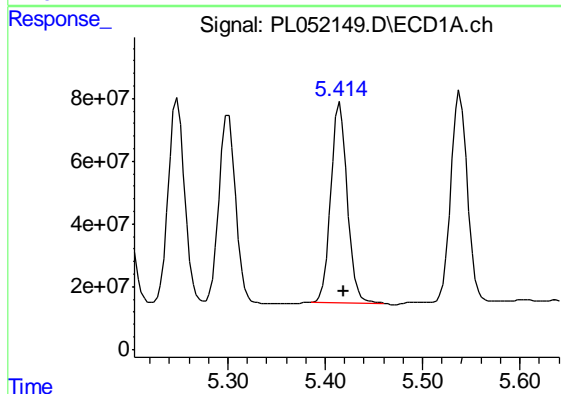
#11 alpha-Chlordane

R.T.: 5.248 min
 Delta R.T.: -0.005 min
 Response: 752058785
 Conc: 51.97 ng/ml



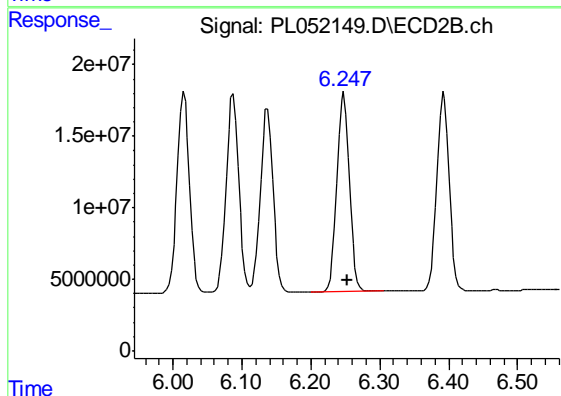
#11 alpha-Chlordane

R.T.: 6.087 min
 Delta R.T.: -0.006 min
 Response: 176404608
 Conc: 51.12 ng/ml



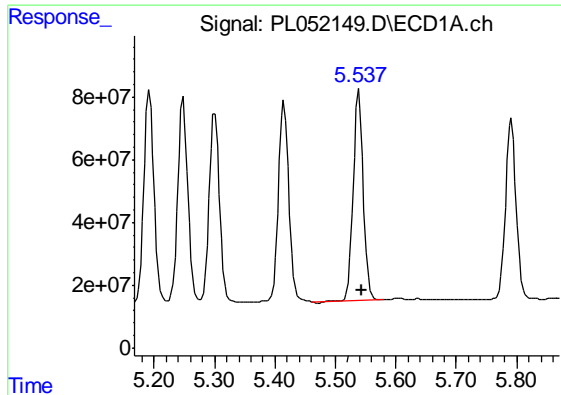
#12 4,4'-DDE

R.T.: 5.415 min
 Delta R.T.: -0.004 min
 Response: 757453154
 Conc: 55.35 ng/ml



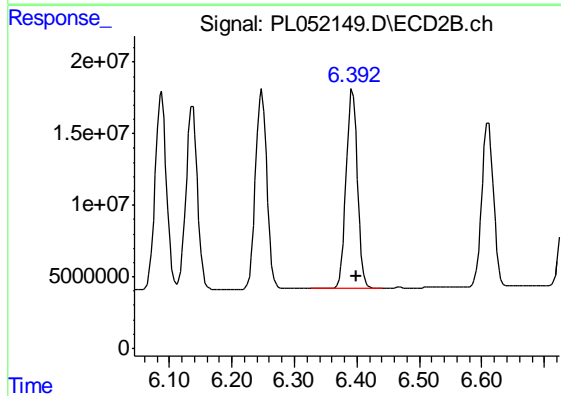
#12 4,4'-DDE

R.T.: 6.248 min
 Delta R.T.: -0.006 min
 Response: 175915620
 Conc: 49.98 ng/ml



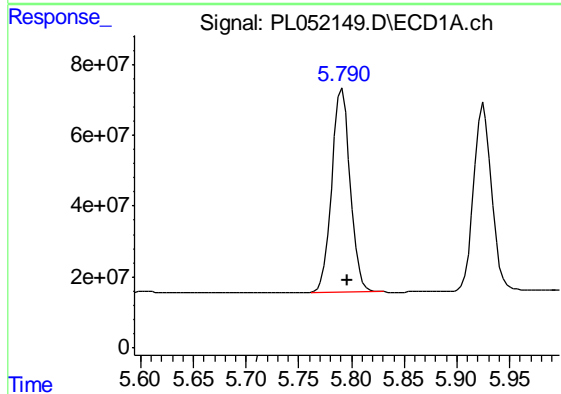
#13 Dieldrin

R.T.: 5.539 min
Delta R.T.: -0.005 min
Response: 779700893
Conc: 51.28 ng/ml



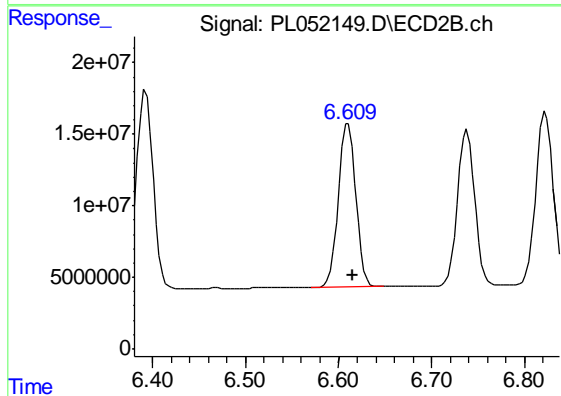
#13 Dieldrin

R.T.: 6.393 min
Delta R.T.: -0.006 min
Response: 174018693
Conc: 50.81 ng/ml



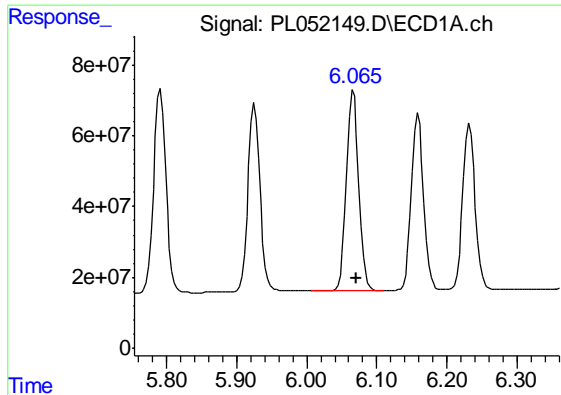
#14 Endrin

R.T.: 5.791 min
Delta R.T.: -0.005 min
Response: 696483454
Conc: 47.75 ng/ml



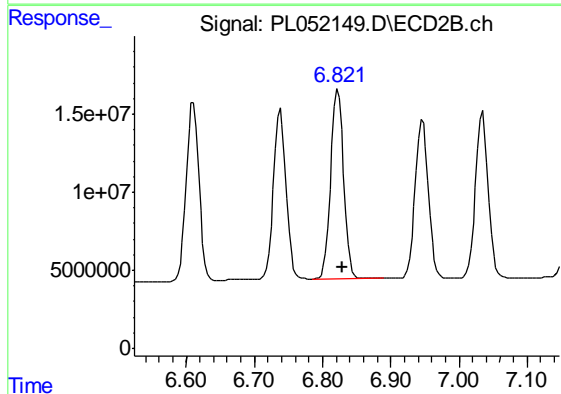
#14 Endrin

R.T.: 6.610 min
Delta R.T.: -0.005 min
Response: 148972120
Conc: 49.25 ng/ml



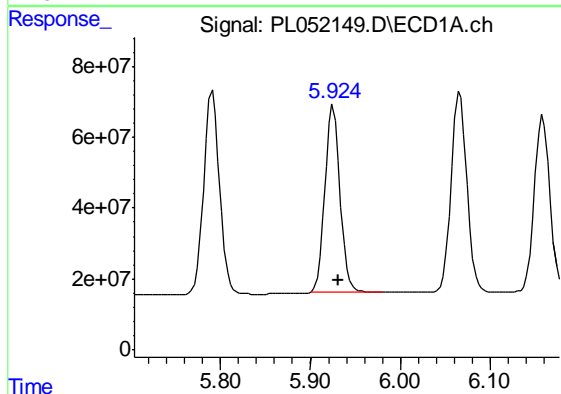
#15 Endosulfan II

R.T.: 6.066 min
Delta R.T.: -0.006 min
Response: 690228196
Conc: 49.61 ng/ml



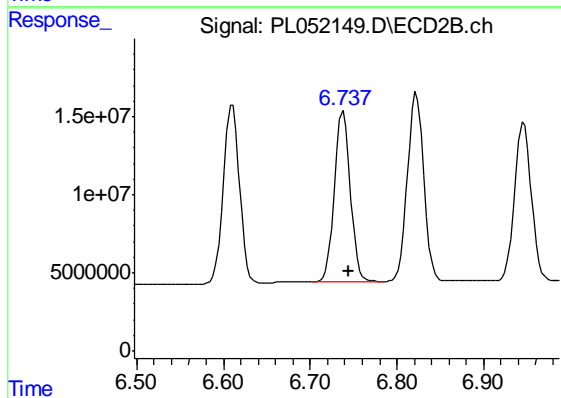
#15 Endosulfan II

R.T.: 6.823 min
Delta R.T.: -0.006 min
Response: 159662229
Conc: 48.44 ng/ml



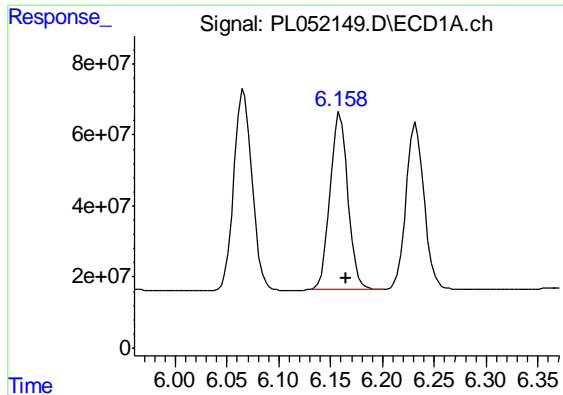
#16 4,4'-DDD

R.T.: 5.926 min
Delta R.T.: -0.006 min
Response: 619001924
Conc: 50.55 ng/ml



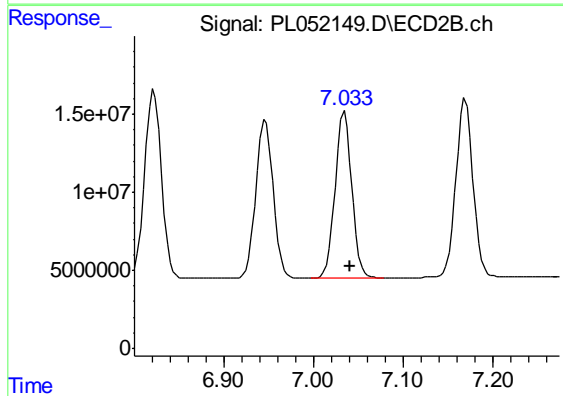
#16 4,4'-DDD

R.T.: 6.738 min
Delta R.T.: -0.006 min
Response: 140416589
Conc: 51.87 ng/ml



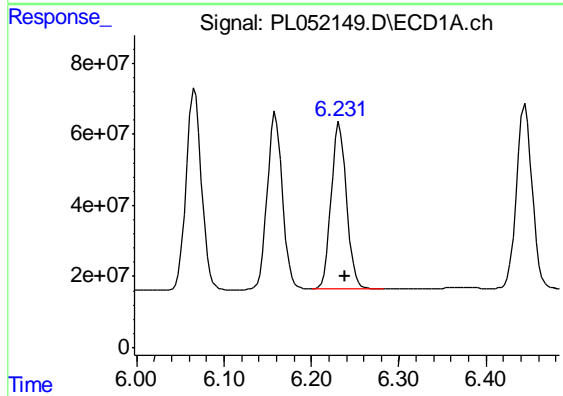
#17 4,4'-DDT

R.T.: 6.159 min
 Delta R.T.: -0.006 min
 Response: 597817175
 Conc: 46.88 ng/ml



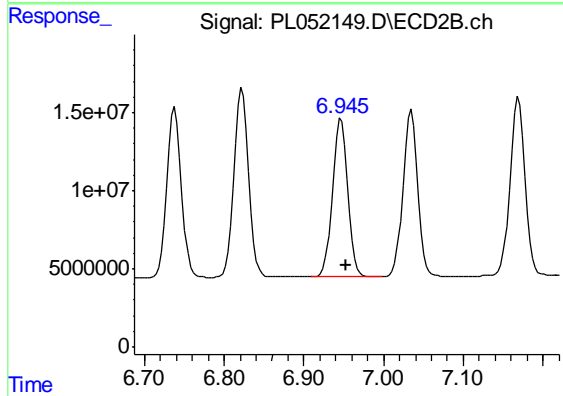
#17 4,4'-DDT

R.T.: 7.033 min
 Delta R.T.: -0.008 min
 Response: 137544896
 Conc: 46.98 ng/ml m



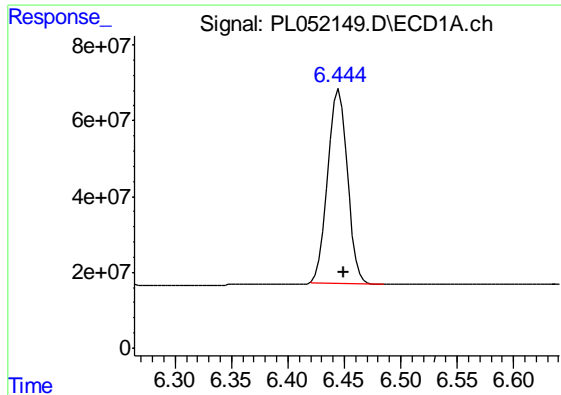
#18 Endrin aldehyde

R.T.: 6.232 min
 Delta R.T.: -0.006 min
 Response: 572204125
 Conc: 49.19 ng/ml



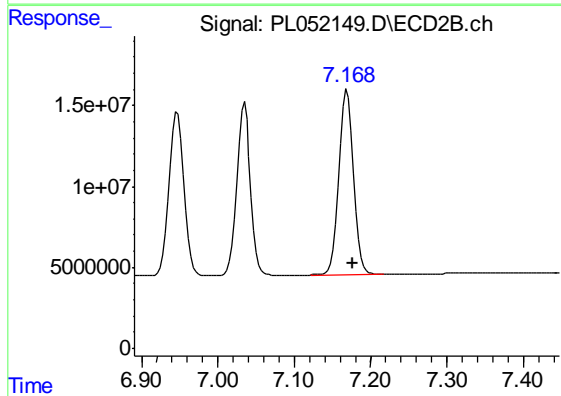
#18 Endrin aldehyde

R.T.: 6.947 min
 Delta R.T.: -0.006 min
 Response: 136978530
 Conc: 48.47 ng/ml



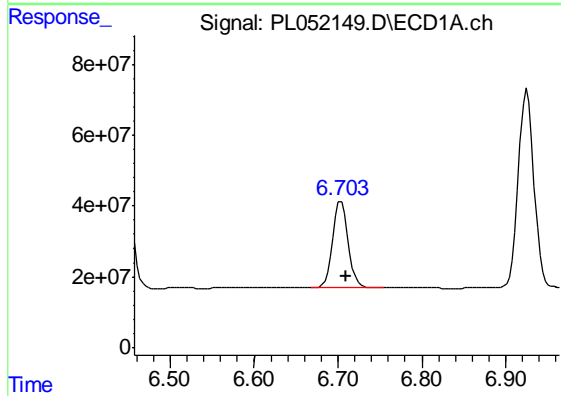
#19 Endosulfan Sulfate

R.T.: 6.445 min
Delta R.T.: -0.004 min
Response: 623501512
Conc: 47.93 ng/ml



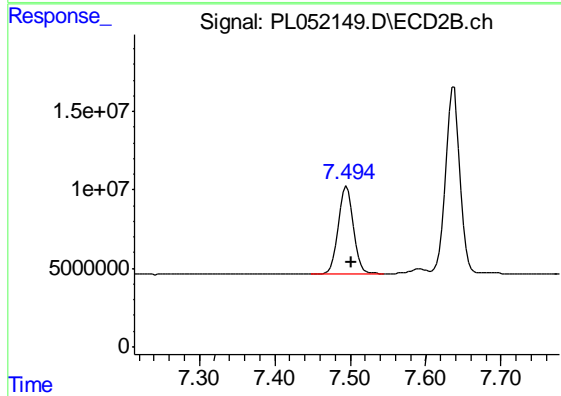
#19 Endosulfan Sulfate

R.T.: 7.169 min
Delta R.T.: -0.006 min
Response: 149908495
Conc: 48.54 ng/ml



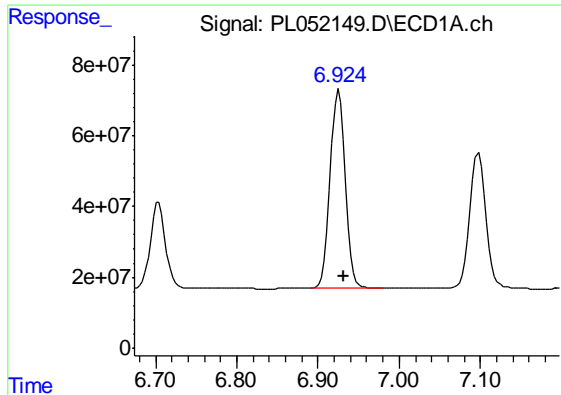
#20 Methoxychlor

R.T.: 6.704 min
Delta R.T.: -0.006 min
Response: 311955099
Conc: 46.01 ng/ml



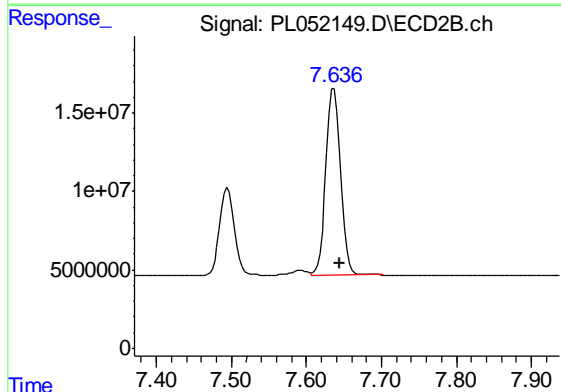
#20 Methoxychlor

R.T.: 7.495 min
Delta R.T.: -0.006 min
Response: 75468567
Conc: 45.00 ng/ml



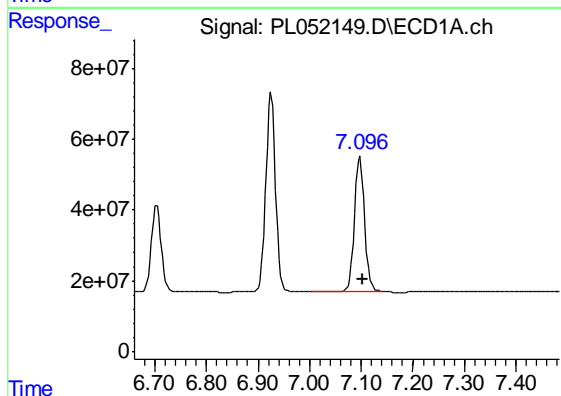
#21 Endrin ketone

R.T.: 6.925 min
Delta R.T.: -0.006 min
Response: 717523957
Conc: 50.72 ng/ml



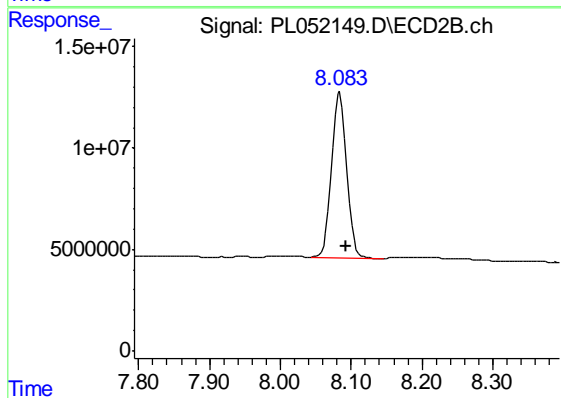
#21 Endrin ketone

R.T.: 7.637 min
Delta R.T.: -0.007 min
Response: 163520826
Conc: 51.11 ng/ml



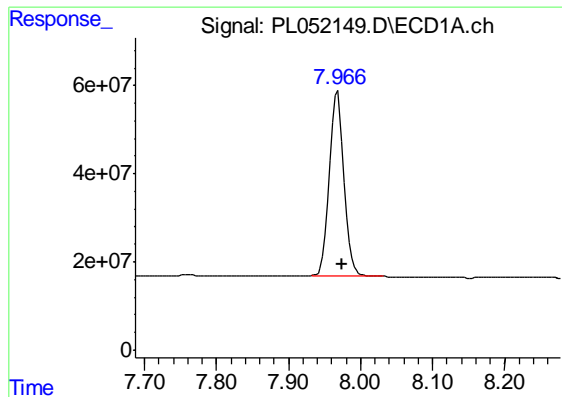
#22 Mirex

R.T.: 7.098 min
Delta R.T.: -0.006 min
Response: 514942636
Conc: 48.64 ng/ml



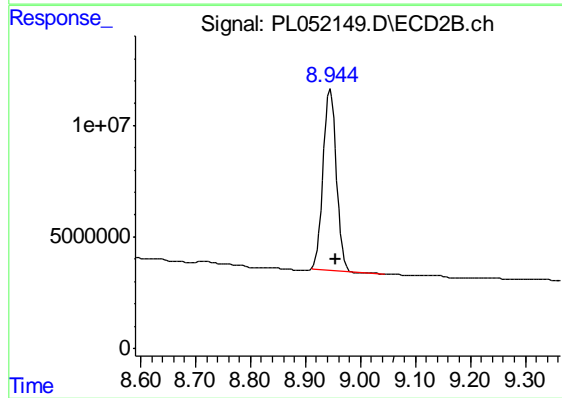
#22 Mirex

R.T.: 8.084 min
Delta R.T.: -0.008 min
Response: 121918333
Conc: 50.12 ng/ml



#28 Decachlorobiphenyl

R.T.: 7.968 min
Delta R.T.: -0.007 min
Response: 590896572
Conc: 48.68 ng/ml



#28 Decachlorobiphenyl

R.T.: 8.945 min
Delta R.T.: -0.009 min
Response: 135102783
Conc: 44.39 ng/ml