

Data Path : Z:\pestpcbsrv\HPCHEM1\ECD_L\Data\PL083119\
 Data File : PL052155.D
 Signal(s) : Signal #1: ECD1A.ch Signal #2: ECD2B.ch
 Acq On : 01 Sep 2019 00:07
 Operator : SG\AJ
 Sample : K4623-17
 Misc :
 ALS Vial : 43 Sample Multiplier: 1

Integration File signal 1: autoint1.e
 Integration File signal 2: autoint2.e
 Quant Time: Sep 01 00:51:02 2019
 Quant Method : Z:\pestpcbsrv\HPCHEM1\ECD_L\methods\PL081919.M
 Quant Title : GC Extractables
 QLast Update : Mon Aug 19 18:03:07 2019
 Response via : Initial Calibration
 Integrator: ChemStation

Volume Inj. : 1 µl
 Signal #1 Phase : ZB-MR2 Signal #2 Phase: ZB-MR1
 Signal #1 Info : 30M x 0.32mm x0.2 Signal #2 Info : 30M x 0.32mm x0.5µm

Compound	RT#1	RT#2	Resp#1	Resp#2	ng/ml	ng/ml
----------	------	------	--------	--------	-------	-------

 System Monitoring Compounds

1) SA Tetrachlo...	3.312	3.922	93433446	25761323	10.917	11.791
28) SA Decachlor...	7.969	8.946	112.8E6	25109603	9.292	8.249

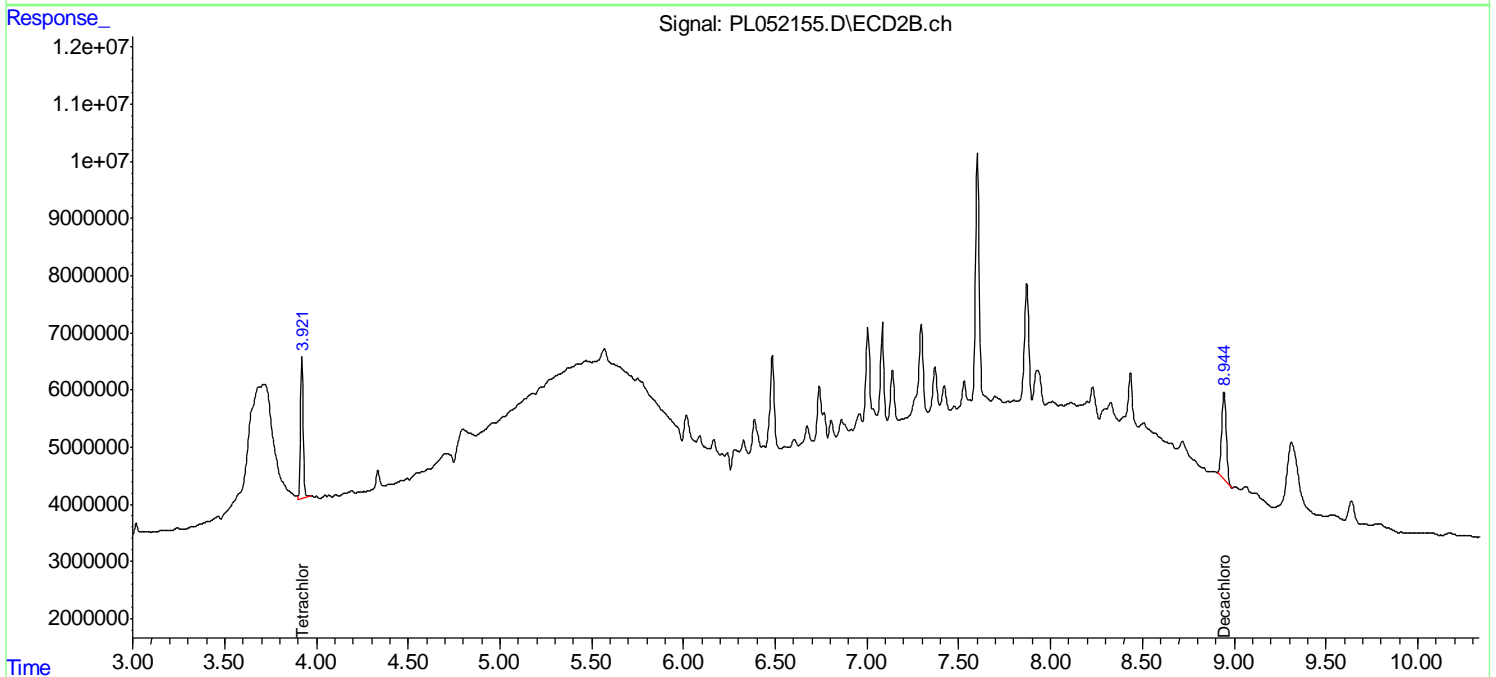
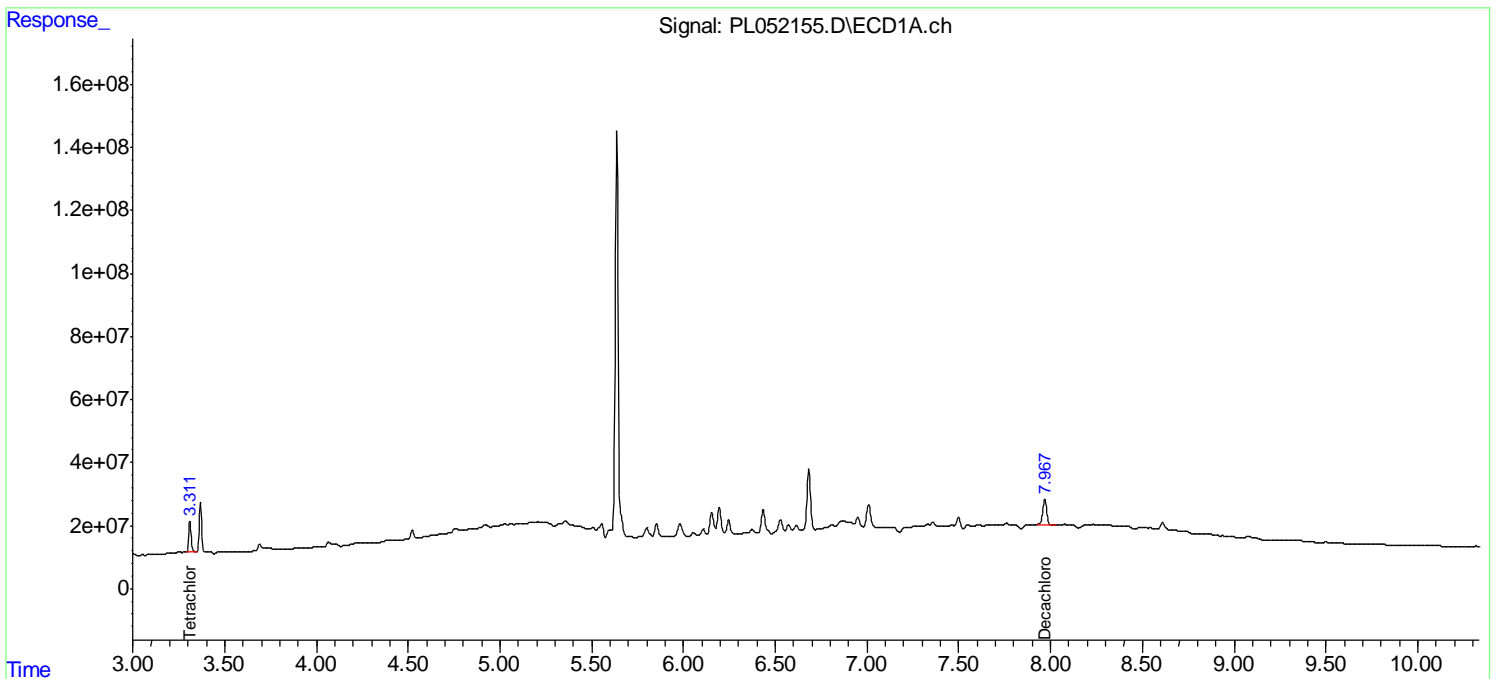
Target Compounds

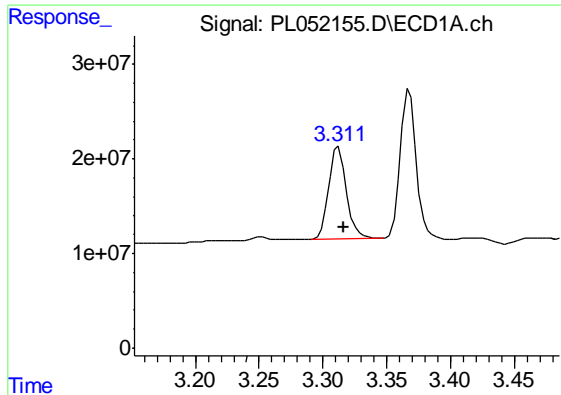
(f)=RT Delta > 1/2 Window (#)=Amounts differ by > 25% (m)=manual int.

Data Path : Z:\pestpcbsrv\HPCHEM1\ECD_L\Data\PL083119\
Data File : PL052155.D
Signal(s) : Signal #1: ECD1A.ch Signal #2: ECD2B.ch
Acq On : 01 Sep 2019 00:07
Operator : SG\AJ
Sample : K4623-17
Misc :
ALS Vial : 43 Sample Multiplier: 1

Integration File signal 1: autoint1.e
Integration File signal 2: autoint2.e
Quant Time: Sep 01 00:51:02 2019
Quant Method : Z:\pestpcbsrv\HPCHEM1\ECD_L\methods\PL081919.M
Quant Title : GC Extractables
QLast Update : Mon Aug 19 18:03:07 2019
Response via : Initial Calibration
Integrator: ChemStation

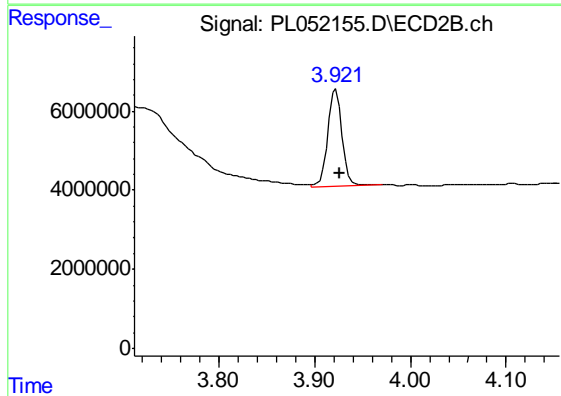
Volume Inj. : 1 µl
Signal #1 Phase : ZB-MR2 Signal #2 Phase: ZB-MR1
Signal #1 Info : 30M x 0.32mm x0.2 Signal #2 Info : 30M x 0.32mm x0.5µm





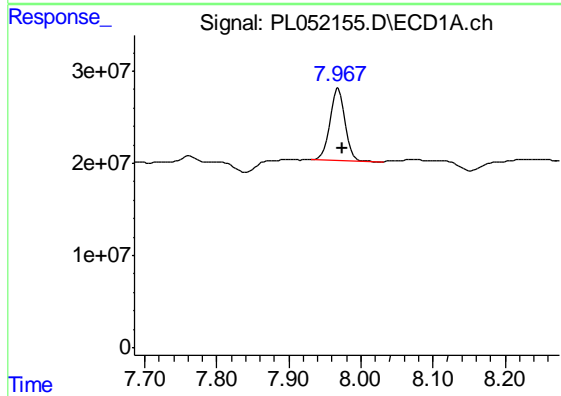
#1 Tetrachloro-m-xylene

R.T.: 3.312 min
Delta R.T.: -0.004 min
Response: 93433446
Conc: 10.92 ng/ml



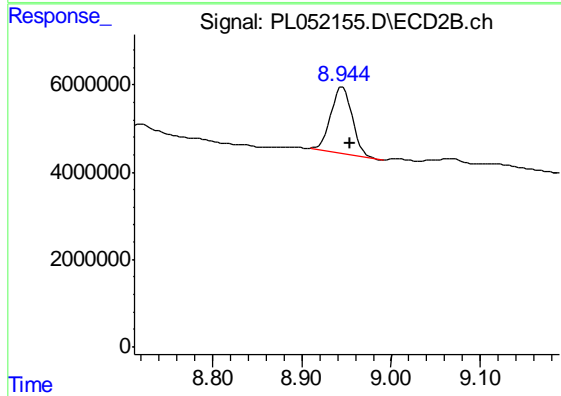
#1 Tetrachloro-m-xylene

R.T.: 3.922 min
Delta R.T.: -0.004 min
Response: 25761323
Conc: 11.79 ng/ml



#28 Decachlorobiphenyl

R.T.: 7.969 min
Delta R.T.: -0.006 min
Response: 112788681
Conc: 9.29 ng/ml



#28 Decachlorobiphenyl

R.T.: 8.946 min
Delta R.T.: -0.009 min
Response: 25109603
Conc: 8.25 ng/ml