

Data Path : Z:\pestpcbsrv\HPCHEM1\ECD_L\Data\PL083119\
 Data File : PL052158.D
 Signal(s) : Signal #1: ECD1A.ch Signal #2: ECD2B.ch
 Acq On : 01 Sep 2019 00:49
 Operator : SG\AJ
 Sample : K4643-10
 Misc :
 ALS Vial : 46 Sample Multiplier: 1

Integration File signal 1: autoint1.e
 Integration File signal 2: autoint2.e
 Quant Time: Sep 01 01:16:00 2019
 Quant Method : Z:\pestpcbsrv\HPCHEM1\ECD_L\methods\PL081919.M
 Quant Title : GC Extractables
 QLast Update : Mon Aug 19 18:03:07 2019
 Response via : Initial Calibration
 Integrator: ChemStation

Volume Inj. : 1 µl
 Signal #1 Phase : ZB-MR2 Signal #2 Phase: ZB-MR1
 Signal #1 Info : 30M x 0.32mm x0.2 Signal #2 Info : 30M x 0.32mm x0.5µm

Compound	RT#1	RT#2	Resp#1	Resp#2	ng/ml	ng/ml

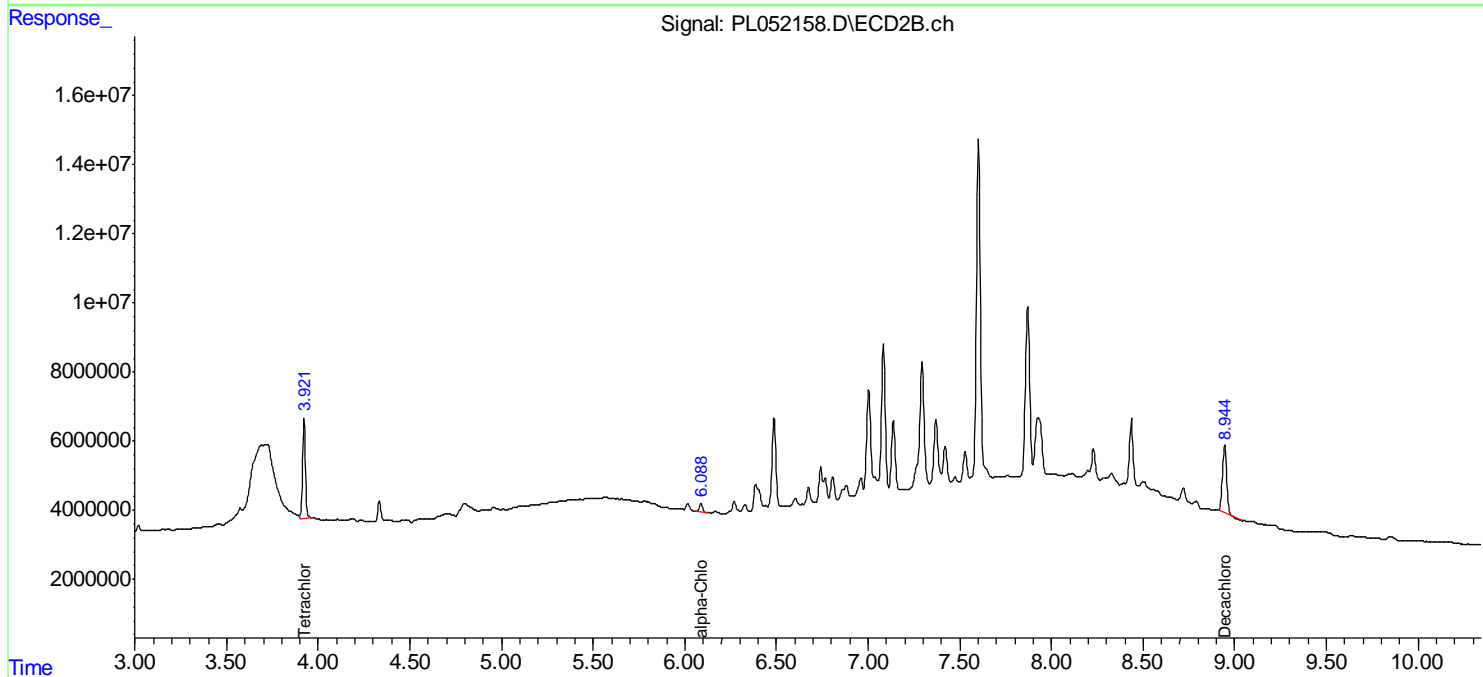
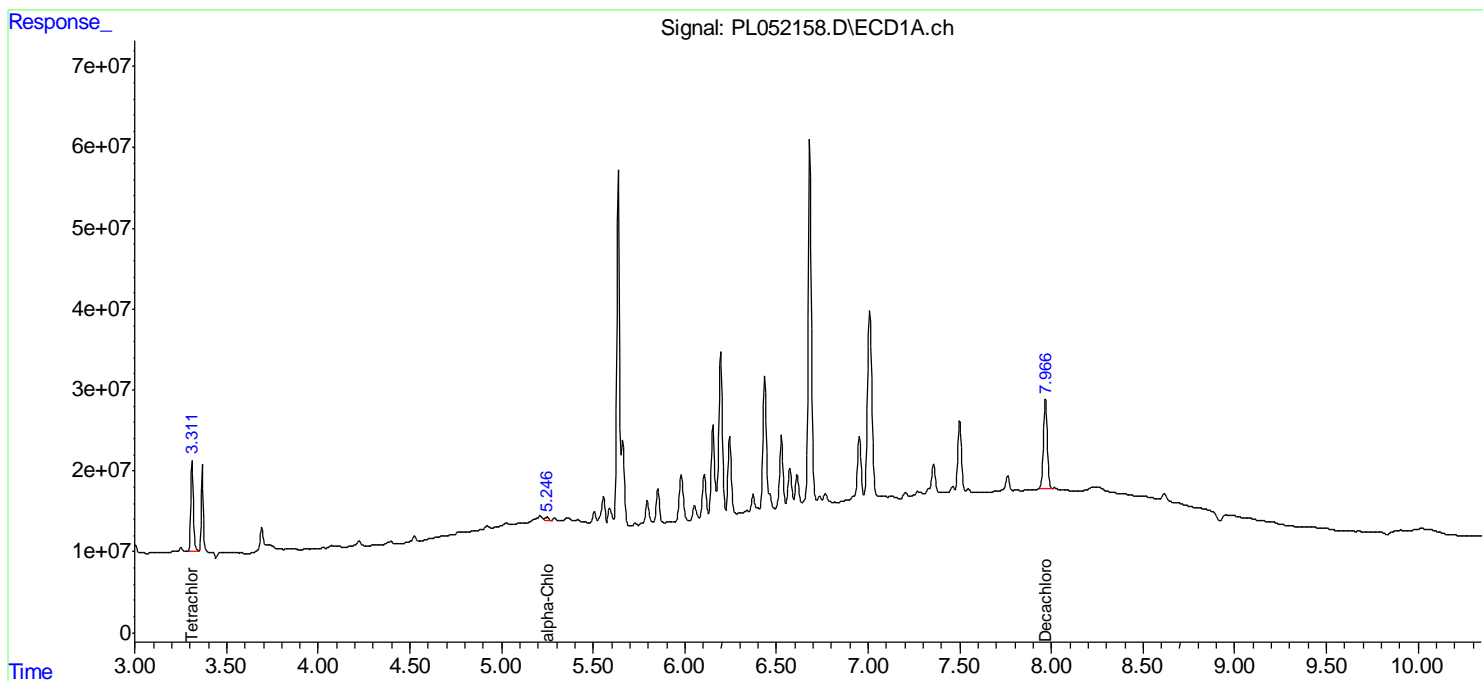
System Monitoring Compounds						
1) SA Tetrachlo...	3.313	3.923	104.5E6	29866875	12.214	13.670
28) SA Decachlor...	7.967	8.945	153.9E6	32899744	12.683	10.809
Target Compounds						
11) B alpha-Chl...	5.248	6.089	7043219	3423247	0.487	0.992 #

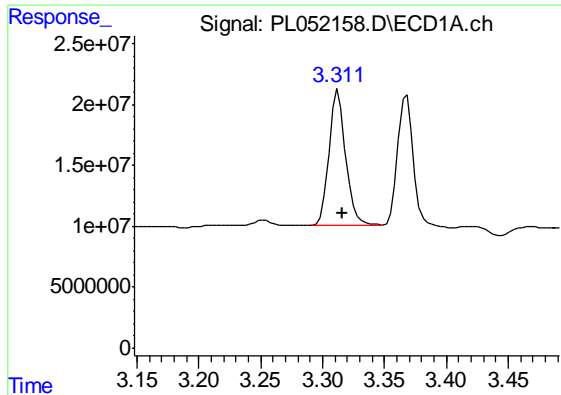
(f)=RT Delta > 1/2 Window (#)=Amounts differ by > 25% (m)=manual int.

Data Path : Z:\pestpcbsrv\HPCHEM1\ECD_L\Data\PL083119\
 Data File : PL052158.D
 Signal(s) : Signal #1: ECD1A.ch Signal #2: ECD2B.ch
 Acq On : 01 Sep 2019 00:49
 Operator : SG\AJ
 Sample : K4643-10
 Misc :
 ALS Vial : 46 Sample Multiplier: 1

Integration File signal 1: autoint1.e
 Integration File signal 2: autoint2.e
 Quant Time: Sep 01 01:16:00 2019
 Quant Method : Z:\pestpcbsrv\HPCHEM1\ECD_L\methods\PL081919.M
 Quant Title : GC Extractables
 QLast Update : Mon Aug 19 18:03:07 2019
 Response via : Initial Calibration
 Integrator: ChemStation

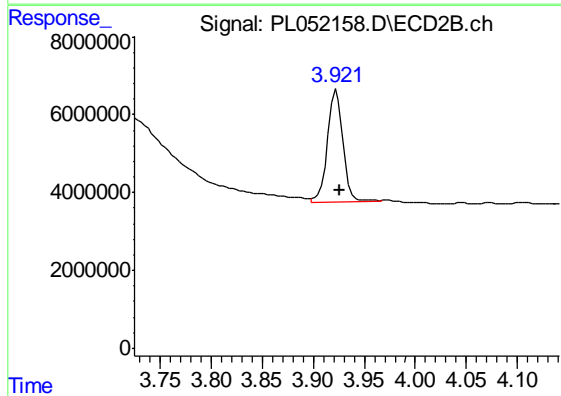
Volume Inj. : 1 µl
 Signal #1 Phase : ZB-MR2 Signal #2 Phase: ZB-MR1
 Signal #1 Info : 30M x 0.32mm x0.2 Signal #2 Info : 30M x 0.32mm x0.5µm





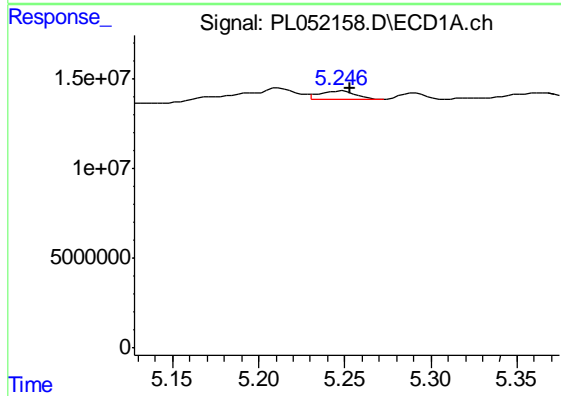
#1 Tetrachloro-m-xylene

R.T.: 3.313 min
Delta R.T.: -0.003 min
Response: 104535004
Conc: 12.21 ng/ml



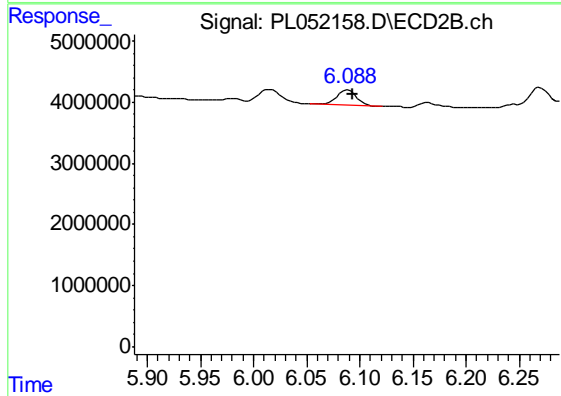
#1 Tetrachloro-m-xylene

R.T.: 3.923 min
Delta R.T.: -0.004 min
Response: 29866875
Conc: 13.67 ng/ml



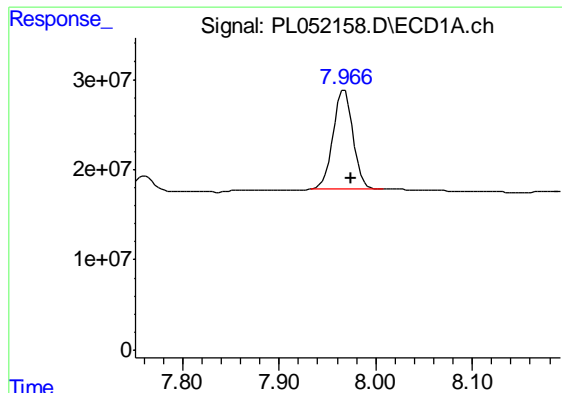
#11 alpha-Chlordane

R.T.: 5.248 min
Delta R.T.: -0.006 min
Response: 7043219
Conc: 0.49 ng/ml



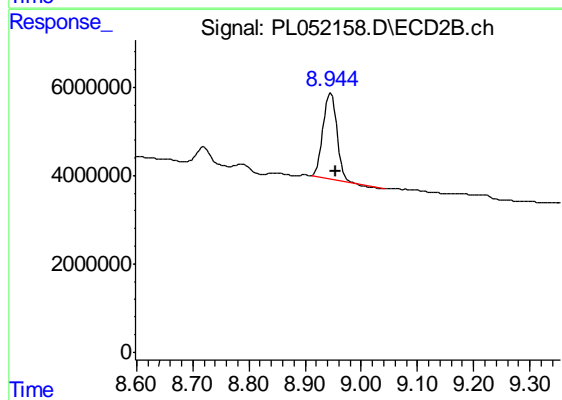
#11 alpha-Chlordane

R.T.: 6.089 min
Delta R.T.: -0.004 min
Response: 3423247
Conc: 0.99 ng/ml



#28 Decachlorobiphenyl

R.T.: 7.967 min
Delta R.T.: -0.007 min
Response: 153945974
Conc: 12.68 ng/ml



#28 Decachlorobiphenyl

R.T.: 8.945 min
Delta R.T.: -0.009 min
Response: 32899744
Conc: 10.81 ng/ml