

Data Path : Z:\pestpcbsrv\HPCHEM1\ECD_L\Data\PL083119\
 Data File : PL052159.D
 Signal(s) : Signal #1: ECD1A.ch Signal #2: ECD2B.ch
 Acq On : 01 Sep 2019 01:03
 Operator : SG\AJ
 Sample : K4643-19
 Misc :
 ALS Vial : 47 Sample Multiplier: 1

Integration File signal 1: autoint1.e
 Integration File signal 2: autoint2.e
 Quant Time: Sep 01 01:16:16 2019
 Quant Method : Z:\pestpcbsrv\HPCHEM1\ECD_L\methods\PL081919.M
 Quant Title : GC Extractables
 QLast Update : Mon Aug 19 18:03:07 2019
 Response via : Initial Calibration
 Integrator: ChemStation

Volume Inj. : 1 µl
 Signal #1 Phase : ZB-MR2 Signal #2 Phase: ZB-MR1
 Signal #1 Info : 30M x 0.32mm x0.2 Signal #2 Info : 30M x 0.32mm x0.5µm

Compound	RT#1	RT#2	Resp#1	Resp#2	ng/ml	ng/ml

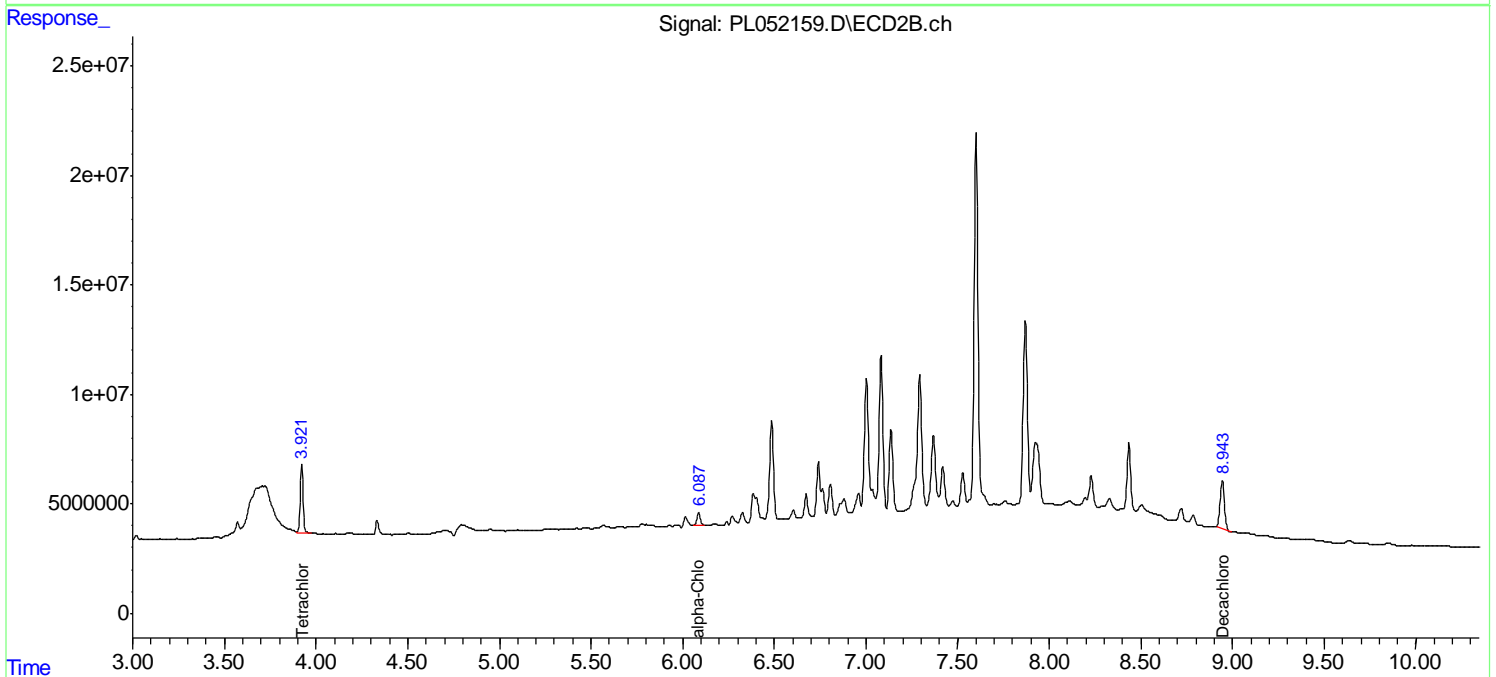
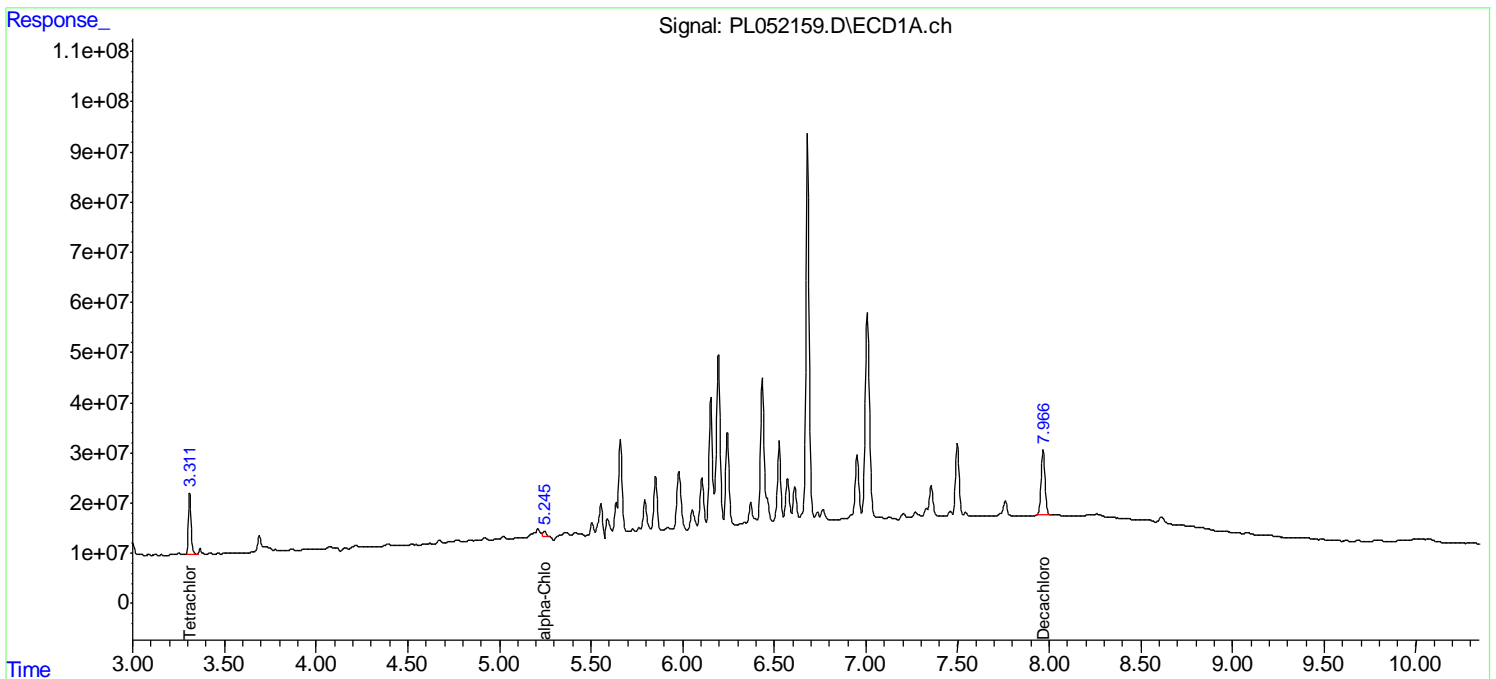
System Monitoring Compounds						
1) SA Tetrachlo...	3.312	3.922	119.8E6	33635692	13.995	15.395
28) SA Decachlor...	7.967	8.944	180.4E6	37813004	14.859	12.423
Target Compounds						
11) B alpha-Chl...	5.245	6.087	16752921	7860199	1.158m	2.278m#

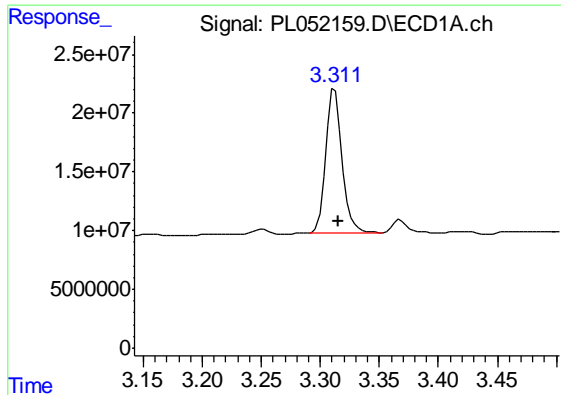
(f)=RT Delta > 1/2 Window (#)=Amounts differ by > 25% (m)=manual int.

Data Path : Z:\pestpcbsrv\HPCHEM1\ECD_L\Data\PL083119\
 Data File : PL052159.D
 Signal(s) : Signal #1: ECD1A.ch Signal #2: ECD2B.ch
 Acq On : 01 Sep 2019 01:03
 Operator : SG\AJ
 Sample : K4643-19
 Misc :
 ALS Vial : 47 Sample Multiplier: 1

Integration File signal 1: autoint1.e
 Integration File signal 2: autoint2.e
 Quant Time: Sep 01 01:16:16 2019
 Quant Method : Z:\pestpcbsrv\HPCHEM1\ECD_L\methods\PL081919.M
 Quant Title : GC Extractables
 QLast Update : Mon Aug 19 18:03:07 2019
 Response via : Initial Calibration
 Integrator: ChemStation

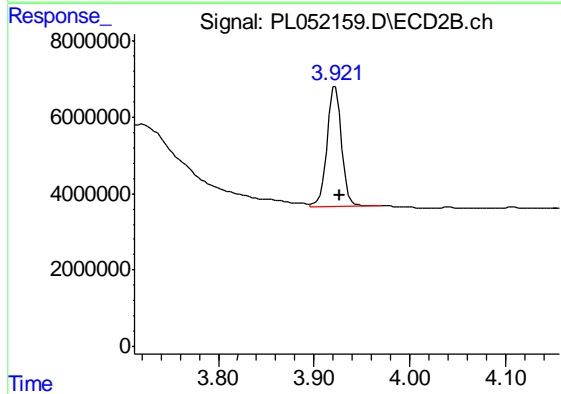
Volume Inj. : 1 µl
 Signal #1 Phase : ZB-MR2 Signal #2 Phase: ZB-MR1
 Signal #1 Info : 30M x 0.32mm x0.2 Signal #2 Info : 30M x 0.32mm x0.5µm





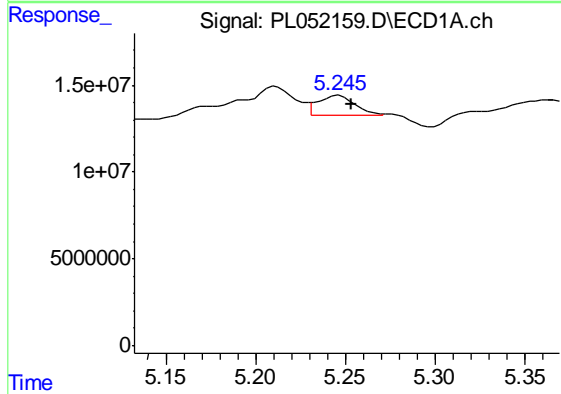
#1 Tetrachloro-m-xylene

R.T.: 3.312 min
 Delta R.T.: -0.004 min
 Response: 119777701
 Conc: 13.99 ng/ml



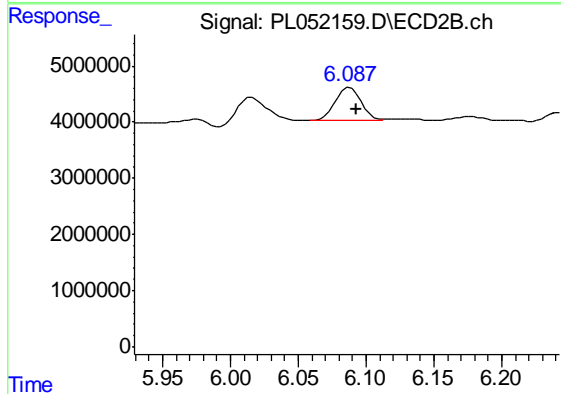
#1 Tetrachloro-m-xylene

R.T.: 3.922 min
 Delta R.T.: -0.004 min
 Response: 33635692
 Conc: 15.40 ng/ml



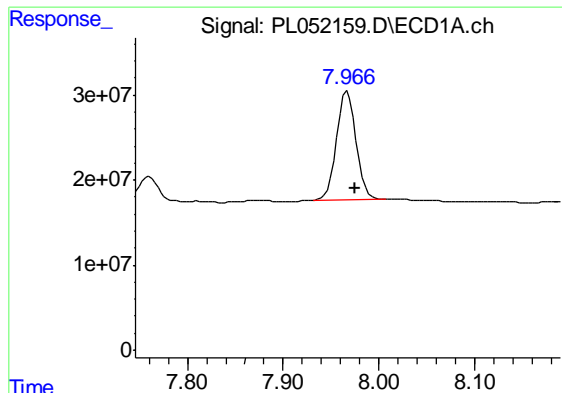
#11 alpha-Chlordane

R.T.: 5.245 min
 Delta R.T.: -0.008 min
 Response: 16752921
 Conc: 1.16 ng/ml m



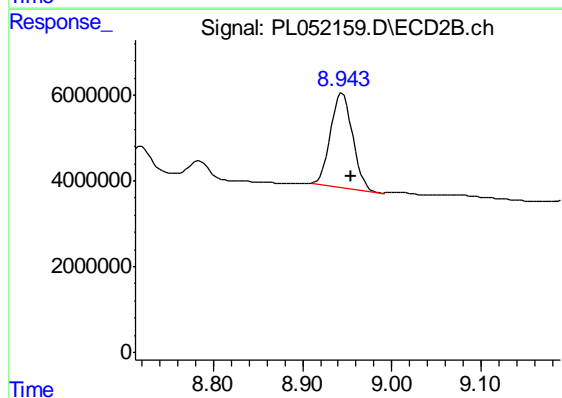
#11 alpha-Chlordane

R.T.: 6.087 min
 Delta R.T.: -0.006 min
 Response: 7860199
 Conc: 2.28 ng/ml m



#28 Decachlorobiphenyl

R.T.: 7.967 min
Delta R.T.: -0.008 min
Response: 180356668
Conc: 14.86 ng/ml



#28 Decachlorobiphenyl

R.T.: 8.944 min
Delta R.T.: -0.010 min
Response: 37813004
Conc: 12.42 ng/ml