

Data Path : Z:\pestpcbsrv\HPCHEM1\ECD\_L\Data\PL083122\  
 Data File : PL077423.D  
 Signal(s) : Signal #1: ECD1A.ch Signal #2: ECD2B.ch  
 Acq On : 31 Aug 2022 18:17  
 Operator : AR\AJ  
 Sample : PB147367TB  
 Misc :  
 ALS Vial : 27 Sample Multiplier: 1

Instrument :  
 ECD\_L  
 ClientSampleId :

Integration File signal 1: autoint1.e  
 Integration File signal 2: autoint2.e  
 Quant Time: Sep 01 03:00:09 2022  
 Quant Method : Z:\pestpcbsrv\HPCHEM1\ECD\_L\methods\PL082222.M  
 Quant Title : GC Extractables  
 QLast Update : Tue Aug 23 05:36:06 2022  
 Response via : Initial Calibration  
 Integrator: ChemStation

Volume Inj. : 1 µl  
 Signal #1 Phase : ZB-MR2 Signal #2 Phase: ZB-MR1  
 Signal #1 Info : 30M x 0.32mm x0.2 Signal #2 Info : 30M x 0.32mm x0.5µm

Compound	RT#1	RT#2	Resp#1	Resp#2	ng/ml	ng/ml
System Monitoring Compounds						
1) SA Tetrachlo...	3.417	2.631	21432873	45552443	15.752	14.822
28) SA Decachlor...	8.906	7.732	20012750	40212929	17.077	14.412
Target Compounds						
7) B delta-BHC	4.644f	0.000	655238	0	0.424	N.D. #
15) B Endosulfa...	6.710f	0.000	241133	0	0.220	N.D. #

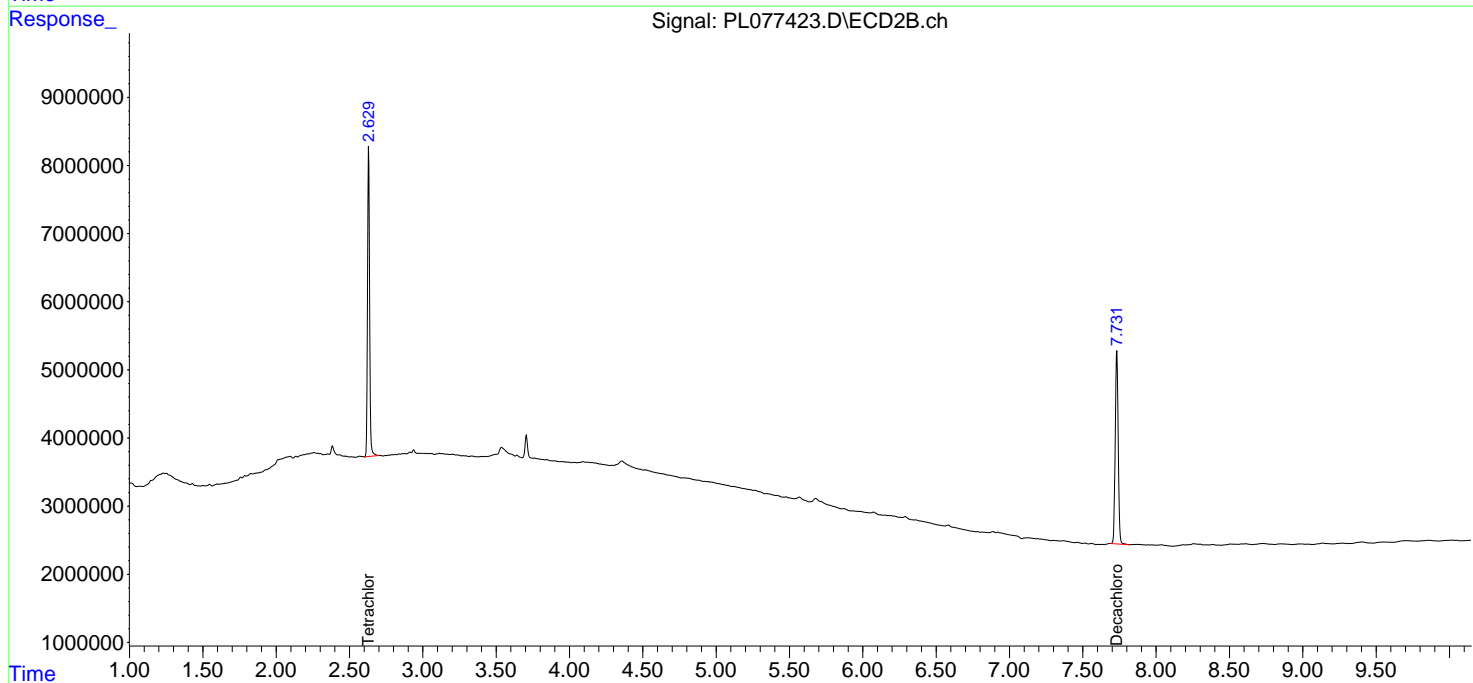
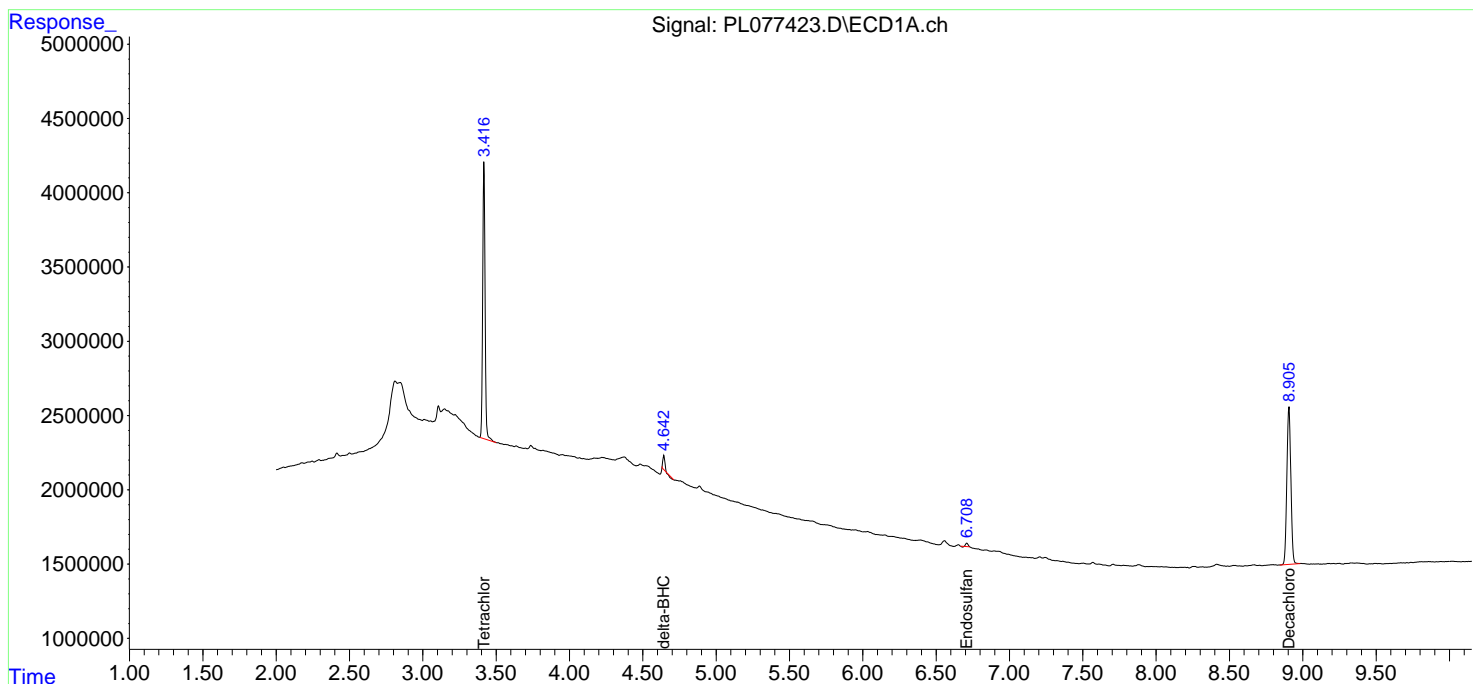
(f)=RT Delta > 1/2 Window (#)=Amounts differ by > 25% (m)=manual int.

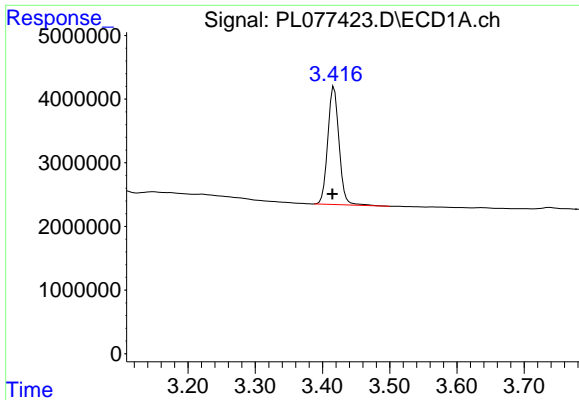
Data Path : Z:\pestpcbsrv\HPCHEM1\ECD\_L\Data\PL083122\  
 Data File : PL077423.D  
 Signal(s) : Signal #1: ECD1A.ch Signal #2: ECD2B.ch  
 Acq On : 31 Aug 2022 18:17  
 Operator : AR\AJ  
 Sample : PB147367TB  
 Misc :  
 ALS Vial : 27 Sample Multiplier: 1

Instrument :  
 ECD\_L  
 ClientSampleId :

Integration File signal 1: autoint1.e  
 Integration File signal 2: autoint2.e  
 Quant Time: Sep 01 03:00:09 2022  
 Quant Method : Z:\pestpcbsrv\HPCHEM1\ECD\_L\methods\PL082222.M  
 Quant Title : GC Extractables  
 QLast Update : Tue Aug 23 05:36:06 2022  
 Response via : Initial Calibration  
 Integrator: ChemStation

Volume Inj. : 1 µl  
 Signal #1 Phase : ZB-MR2 Signal #2 Phase: ZB-MR1  
 Signal #1 Info : 30M x 0.32mm x0.2 Signal #2 Info : 30M x 0.32mm x0.5µm

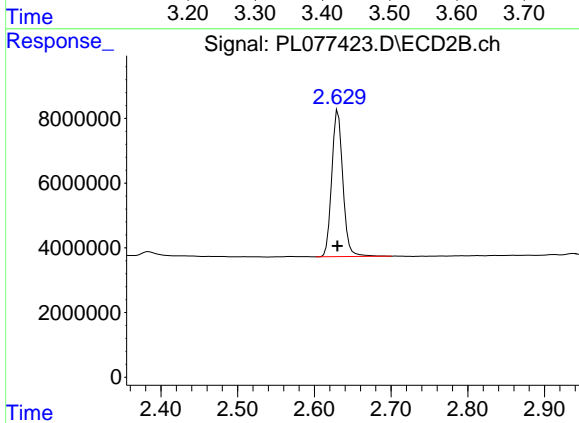




#1 Tetrachloro-m-xylene

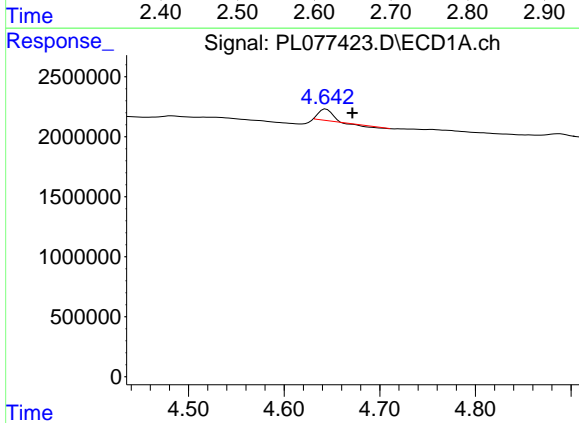
R.T.: 3.417 min  
 Delta R.T.: 0.002 min  
 Response: 21432873  
 Conc: 15.75 ng/ml

Instrument :  
 ECD\_L  
 ClientSampleId :



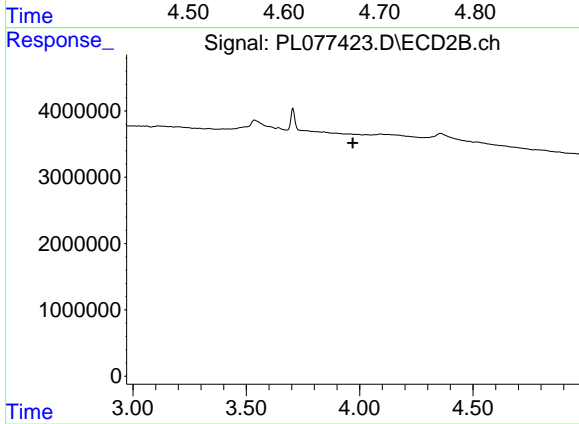
#1 Tetrachloro-m-xylene

R.T.: 2.631 min  
 Delta R.T.: 0.000 min  
 Response: 45552443  
 Conc: 14.82 ng/ml



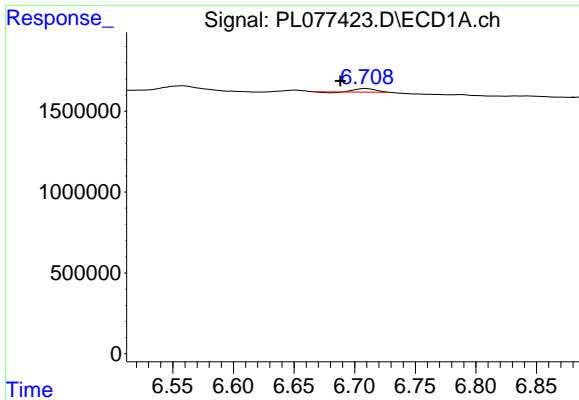
#7 delta-BHC

R.T.: 4.644 min  
 Delta R.T.: -0.028 min  
 Response: 655238  
 Conc: 0.42 ng/ml



#7 delta-BHC

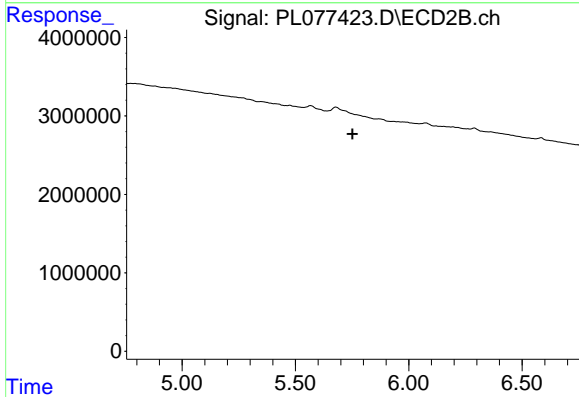
R.T.: 0.000 min  
 Exp R.T. : 3.970 min  
 Response: 0  
 Conc: N.D.



#15 Endosulfan II

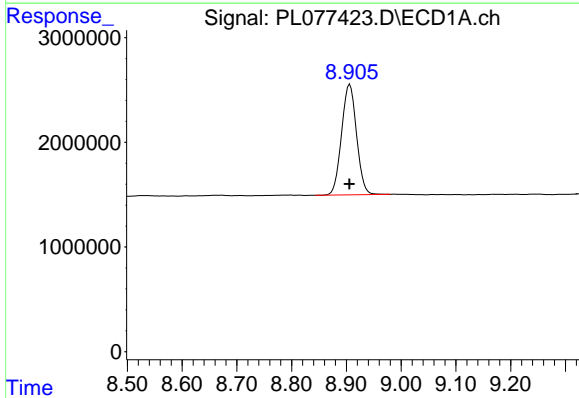
R.T.: 6.710 min  
 Delta R.T.: 0.021 min  
 Response: 241133  
 Conc: 0.22 ng/ml

Instrument :  
 ECD\_L  
 ClientSampleId :



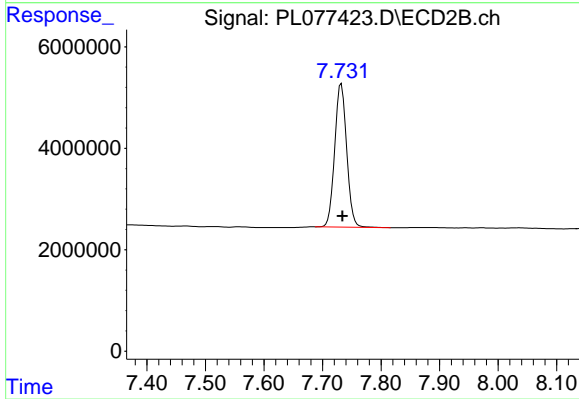
#15 Endosulfan II

R.T.: 0.000 min  
 Exp R.T. : 5.752 min  
 Response: 0  
 Conc: N.D.



#28 Decachlorobiphenyl

R.T.: 8.906 min  
 Delta R.T.: 0.000 min  
 Response: 20012750  
 Conc: 17.08 ng/ml



#28 Decachlorobiphenyl

R.T.: 7.732 min  
 Delta R.T.: -0.002 min  
 Response: 40212929  
 Conc: 14.41 ng/ml