

Data Path : Z:\pestpcbsrv\HPCHEM1\ECD\_L\Data\PL083122\  
 Data File : PL077430.D  
 Signal(s) : Signal #1: ECD1A.ch Signal #2: ECD2B.ch  
 Acq On : 31 Aug 2022 19:54  
 Operator : AR\AJ  
 Sample : N4438-02  
 Misc :  
 ALS Vial : 34 Sample Multiplier: 1

**Instrument :**  
 ECD\_L  
**ClientSampleId :**  
 KTS2-WC-S-MH-01-0-20

Integration File signal 1: autoint1.e  
 Integration File signal 2: autoint2.e  
 Quant Time: Sep 01 03:02:16 2022  
 Quant Method : Z:\pestpcbsrv\HPCHEM1\ECD\_L\methods\PL082222.M  
 Quant Title : GC Extractables  
 QLast Update : Tue Aug 23 05:36:06 2022  
 Response via : Initial Calibration  
 Integrator: ChemStation

Volume Inj. : 1 µl  
 Signal #1 Phase : ZB-MR2 Signal #2 Phase: ZB-MR1  
 Signal #1 Info : 30M x 0.32mm x0.2 Signal #2 Info : 30M x 0.32mm x0.5µm

Compound	RT#1	RT#2	Resp#1	Resp#2	ng/ml	ng/ml
-----						
System Monitoring Compounds						
1) SA Tetrachlo...	3.417	2.630	21978224	45968932	16.153	14.957
28) SA Decachlor...	8.905	7.731	14913488	29578716	12.726	10.600

Target Compounds

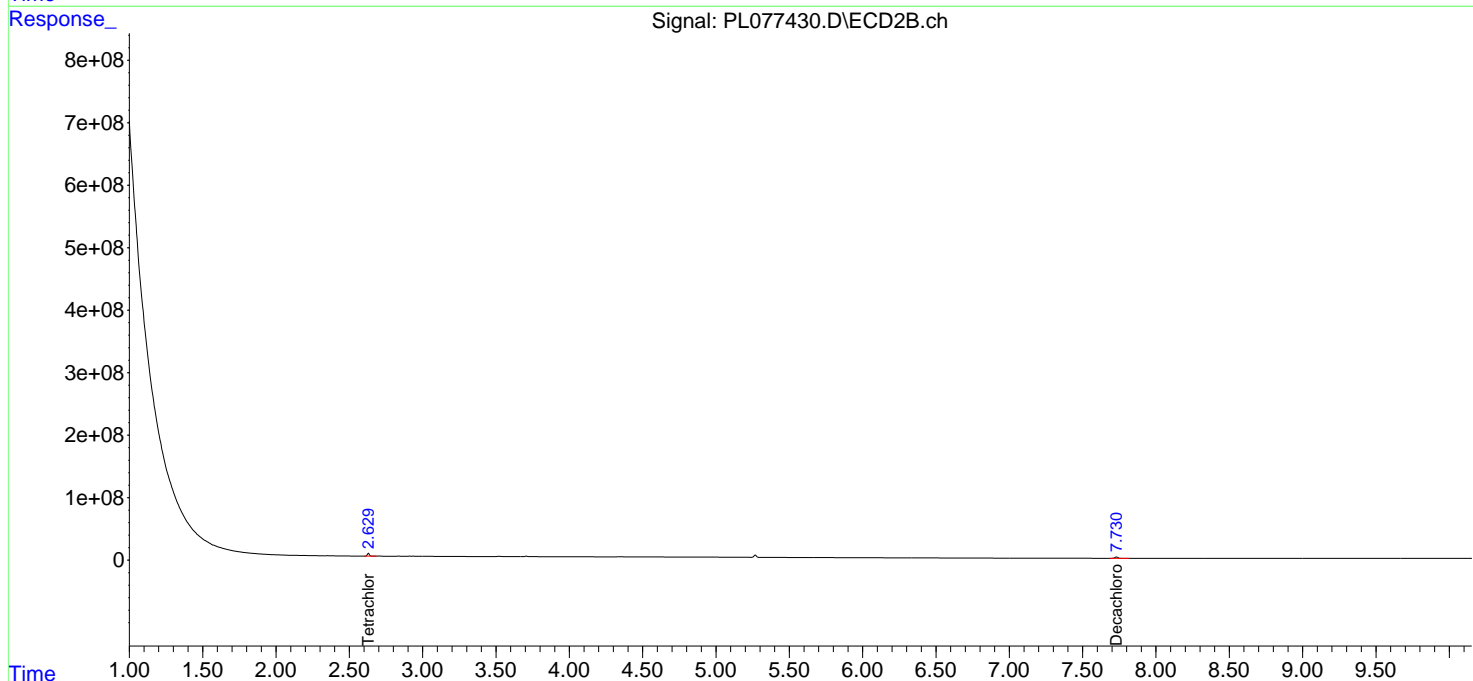
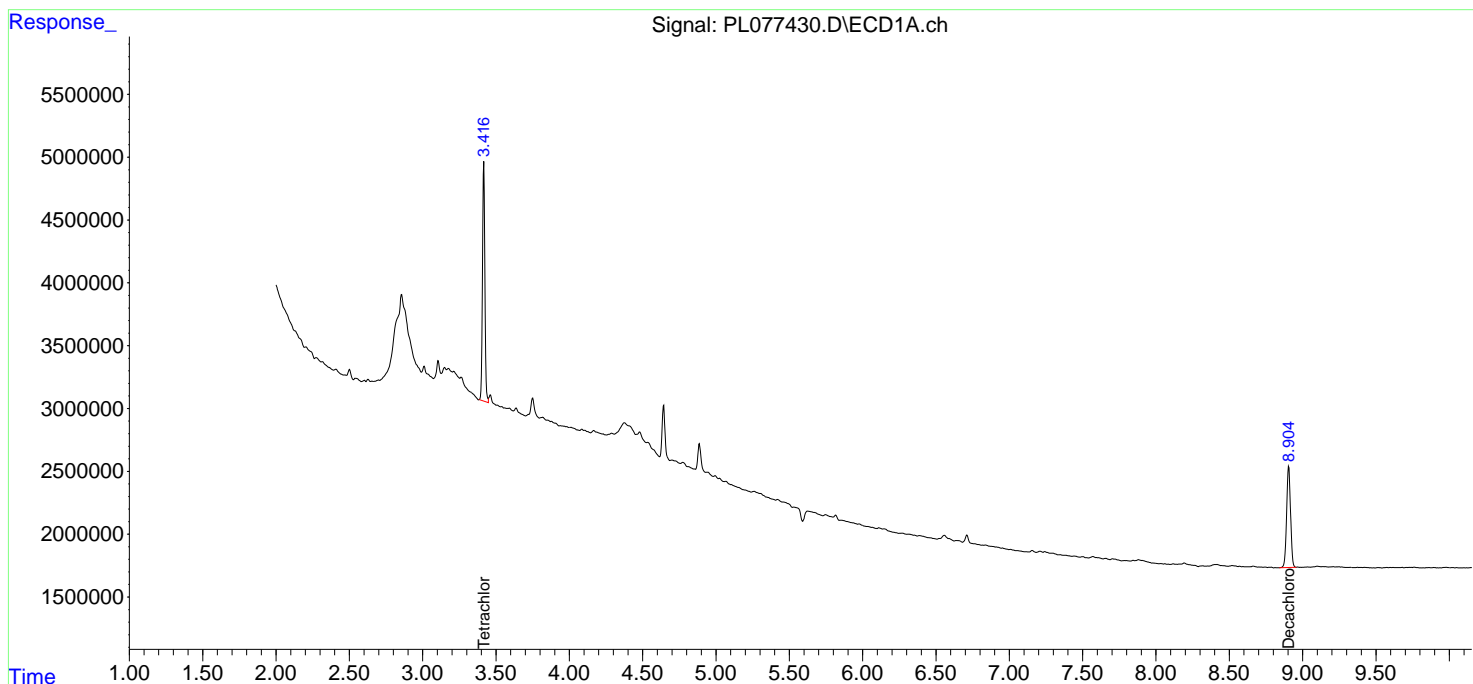
(f)=RT Delta > 1/2 Window (#)=Amounts differ by > 25% (m)=manual int.

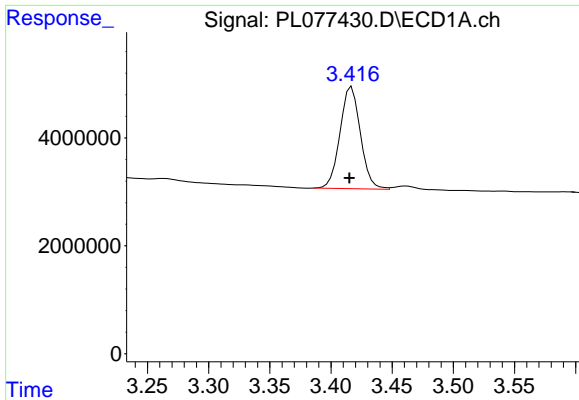
Data Path : Z:\pestpcbsrv\HPCHEM1\ECD\_L\Data\PL083122\  
 Data File : PL077430.D  
 Signal(s) : Signal #1: ECD1A.ch Signal #2: ECD2B.ch  
 Acq On : 31 Aug 2022 19:54  
 Operator : AR\AJ  
 Sample : N4438-02  
 Misc :  
 ALS Vial : 34 Sample Multiplier: 1

Instrument :  
 ECD\_L  
 ClientSampleId :  
 KTS2-WC-S-MH-01-0-20

Integration File signal 1: autoint1.e  
 Integration File signal 2: autoint2.e  
 Quant Time: Sep 01 03:02:16 2022  
 Quant Method : Z:\pestpcbsrv\HPCHEM1\ECD\_L\methods\PL082222.M  
 Quant Title : GC Extractables  
 QLast Update : Tue Aug 23 05:36:06 2022  
 Response via : Initial Calibration  
 Integrator: ChemStation

Volume Inj. : 1 µl  
 Signal #1 Phase : ZB-MR2 Signal #2 Phase: ZB-MR1  
 Signal #1 Info : 30M x 0.32mm x0.2 Signal #2 Info : 30M x 0.32mm x0.5µm

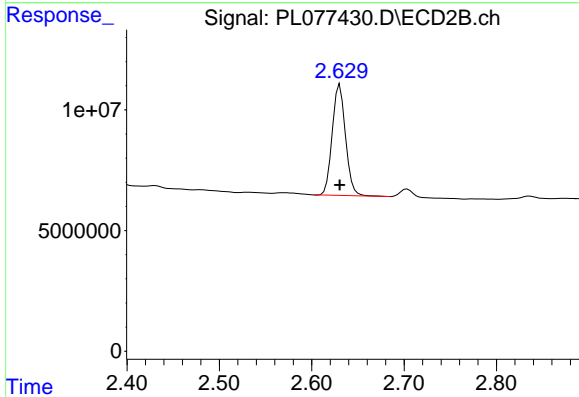




#1 Tetrachloro-m-xylene

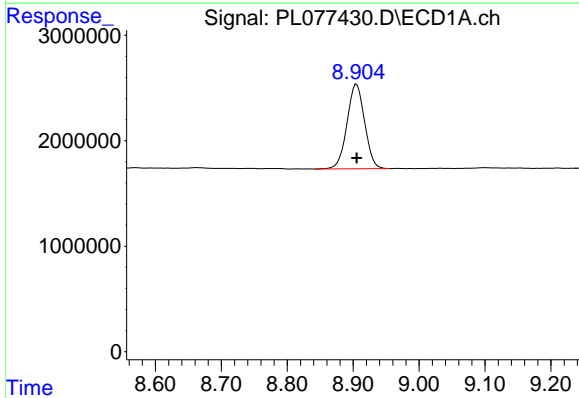
R.T.: 3.417 min  
 Delta R.T.: 0.002 min  
 Response: 21978224  
 Conc: 16.15 ng/ml

Instrument :  
 ECD\_L  
 ClientSampleId :  
 KTS2-WC-S-MH-01-0-20



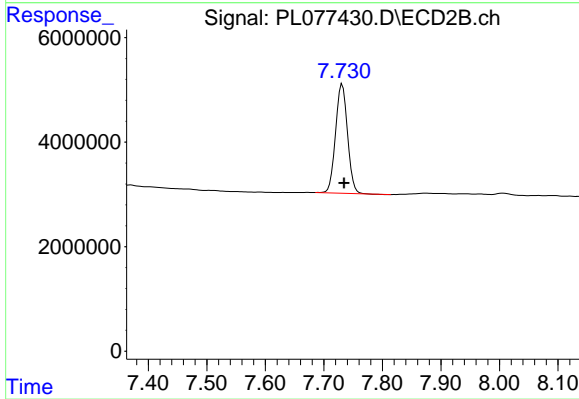
#1 Tetrachloro-m-xylene

R.T.: 2.630 min  
 Delta R.T.: 0.000 min  
 Response: 45968932  
 Conc: 14.96 ng/ml



#28 Decachlorobiphenyl

R.T.: 8.905 min  
 Delta R.T.: 0.000 min  
 Response: 14913488  
 Conc: 12.73 ng/ml



#28 Decachlorobiphenyl

R.T.: 7.731 min  
 Delta R.T.: -0.003 min  
 Response: 29578716  
 Conc: 10.60 ng/ml