

Data Path : Z:\pestpcbsrv\HPCHEM1\ECD_L\Data\PL090124\
 Data File : PL091445.D
 Signal(s) : Signal #1: ECD1A.ch Signal #2: ECD2B.ch
 Acq On : 30 Aug 2024 13:48
 Operator : AR\AJ
 Sample : P3751-02MSD
 Misc :
 ALS Vial : 9 Sample Multiplier: 1

Instrument :
 ECD_L
 ClientSampleId :

Integration File signal 1: autoint1.e
 Integration File signal 2: autoint2.e
 Quant Time: Aug 31 03:34:32 2024
 Quant Method : Z:\pestpcbsrv\HPCHEM1\ECD_L\methods\PL081324.M
 Quant Title : GC Extractables
 QLast Update : Wed Aug 14 13:09:19 2024
 Response via : Initial Calibration
 Integrator: ChemStation

Volume Inj. : 1 µl
 Signal #1 Phase : ZB-MR2 Signal #2 Phase: ZB-MR1
 Signal #1 Info : 30M x 0.32mm x0.2 Signal #2 Info : 30M x 0.32mm x0.5µm

Compound	RT#1	RT#2	Resp#1	Resp#2	ng/ml	ng/ml
System Monitoring Compounds						
1) SA Tetrachlo...	3.545	2.786	33584852	36954880	15.641	18.932
28) SA Decachlor...	9.056	7.923	29190471	41941960	19.147	22.143
Target Compounds						
2) A alpha-BHC	4.001	3.288	133.5E6	151.3E6	44.545	54.561
4) MA Heptachlor	4.921	3.957	120.7E6	137.7E6	45.332	53.318
5) MB Aldrin	5.262	4.237	110.0E6	124.2E6	42.616	50.492
6) B beta-BHC	4.529	3.916	58536135	61573639	43.284	52.311
7) B delta-BHC	4.776	4.146	123.4E6	136.6E6	45.338	53.889
8) B Heptachlo...	5.688	4.740	112.3E6	115.3E6	45.899	51.130
9) A Endosulfan I	6.073	5.109	101.0E6	111.6E6	44.999	52.901
10) B gamma-Chl...	5.944	4.989	126.1E6	121.1E6	52.170	51.244
11) B alpha-Chl...	6.023	5.054	109.0E6	121.5E6	45.281	51.667
12) B 4,4'-DDE	6.195	5.242	95192267	107.3E6	45.501	51.335
13) MA Dieldrin	6.348	5.374	108.7E6	123.1E6	46.161	54.033
14) MA Endrin	6.578	5.649	89527898	109.1E6	46.167	53.541
15) B Endosulfa...	6.797	5.943	93058008	102.0E6	45.985	52.712
16) A 4,4'-DDD	6.712	5.797	78107622	89500734	51.680	54.217
17) MA 4,4'-DDT	7.026	6.047	85690036	95194577	48.274	53.588
18) B Endrin al...	6.926	6.122	72574152	82582695	45.461	53.016
19) B Endosulfa...	7.161	6.345	85281691	98735464	44.449	51.211
20) A Methoxychlor	7.501	6.622	48918391	52876341	52.026	53.250
21) B Endrin ke...	7.645	6.850	98771095	110.8E6	47.040	50.860
22) Mirex	8.119	7.031	77283361	84902161	45.430	45.489
23) Chlordane-1	0.000	3.790	0	228699	N.D.	3.137 #
24) Chlordane-2	5.262f	4.350	110.0E6	1810152	1083.204	19.266 #
25) Chlordane-3	5.944	4.989	126.1E6	121.1E6	362.959	498.849 #
26) Chlordane-4	6.023	5.054	109.0E6	121.5E6	259.206	521.295 #
27) Chlordane-5	0.000	5.744f	0	2825896	N.D.	40.815 #

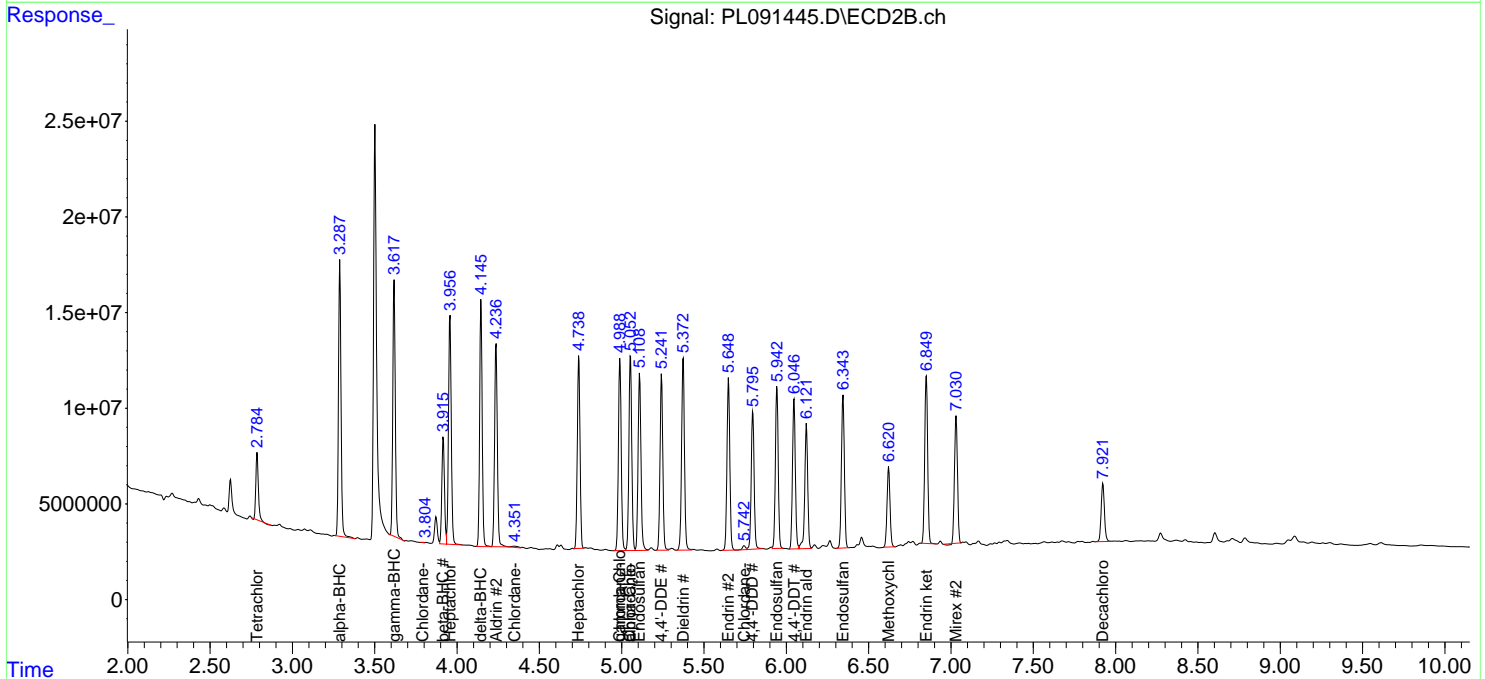
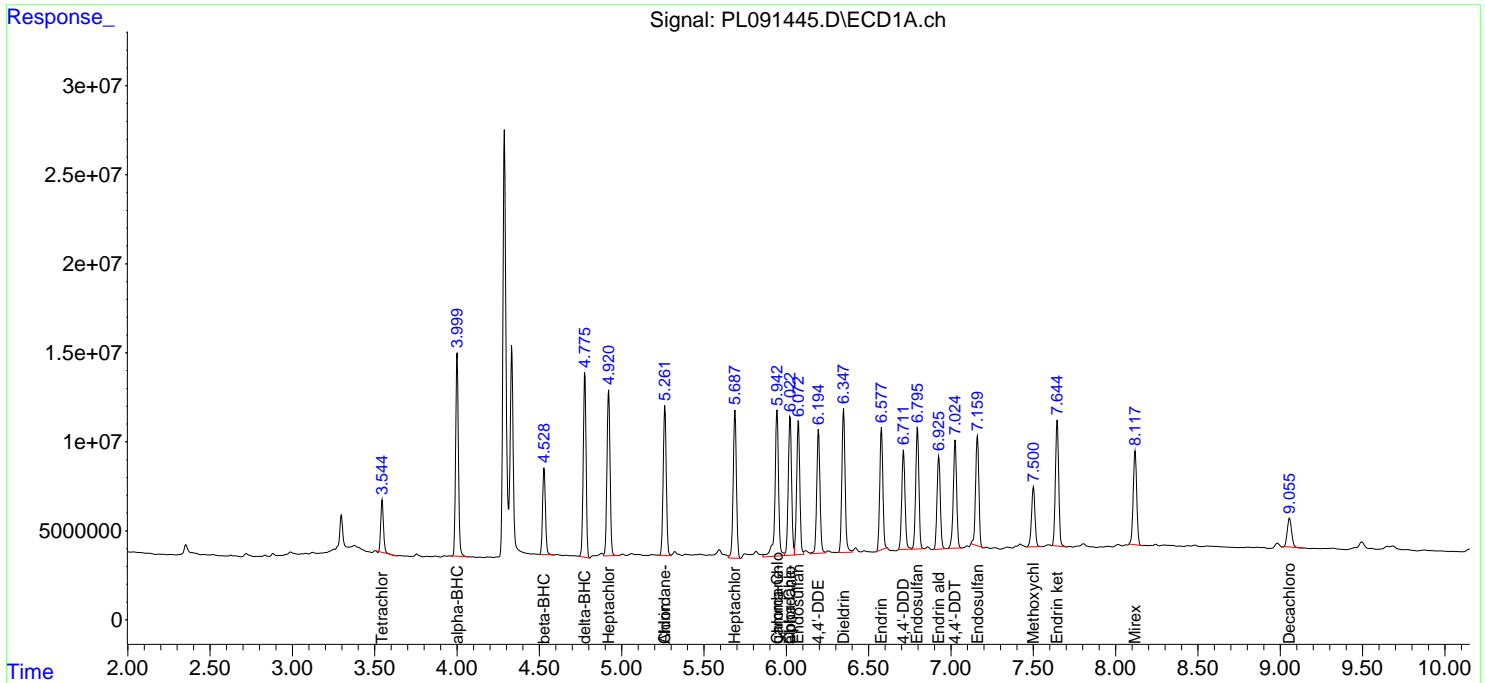
(f)=RT Delta > 1/2 Window (#)=Amounts differ by > 25% (m)=manual int.

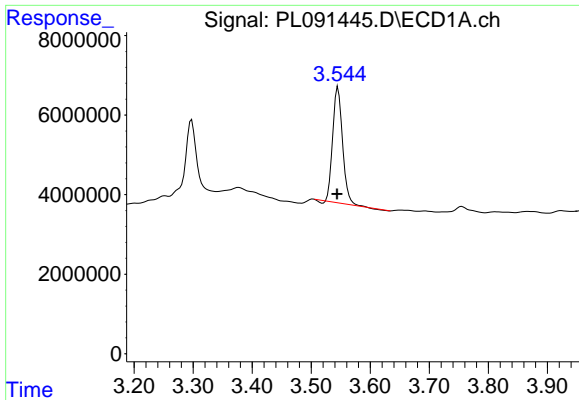
Data Path : Z:\pestpcbsrv\HPCHEM1\ECD_L\Data\PL090124\
 Data File : PL091445.D
 Signal(s) : Signal #1: ECD1A.ch Signal #2: ECD2B.ch
 Acq On : 30 Aug 2024 13:48
 Operator : AR\AJ
 Sample : P3751-02MSD
 Misc :
 ALS Vial : 9 Sample Multiplier: 1

Instrument :
 ECD_L
 ClientSampleId :

Integration File signal 1: autoint1.e
 Integration File signal 2: autoint2.e
 Quant Time: Aug 31 03:34:32 2024
 Quant Method : Z:\pestpcbsrv\HPCHEM1\ECD_L\methods\PL081324.M
 Quant Title : GC Extractables
 QLast Update : Wed Aug 14 13:09:19 2024
 Response via : Initial Calibration
 Integrator: ChemStation

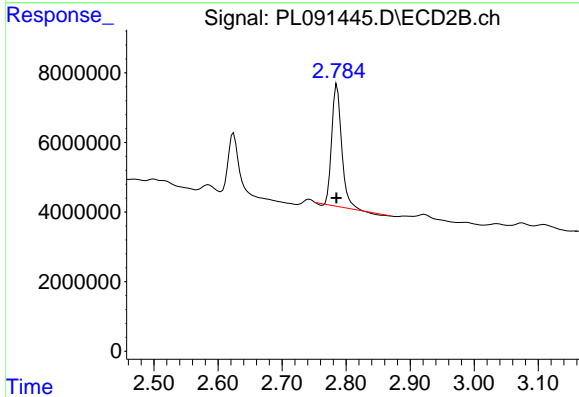
Volume Inj. : 1 µl
 Signal #1 Phase : ZB-MR2 Signal #2 Phase: ZB-MR1
 Signal #1 Info : 30M x 0.32mm x0.2 Signal #2 Info : 30M x 0.32mm x0.5µm



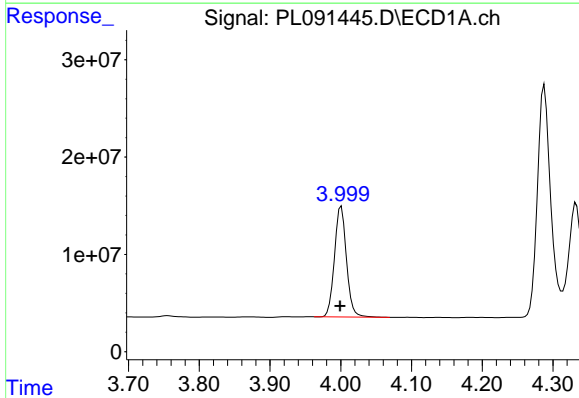


#1 Tetrachloro-m-xylene
 R.T.: 3.545 min
 Delta R.T.: 0.001 min
 Response: 33584852
 Conc: 15.64 ng/ml

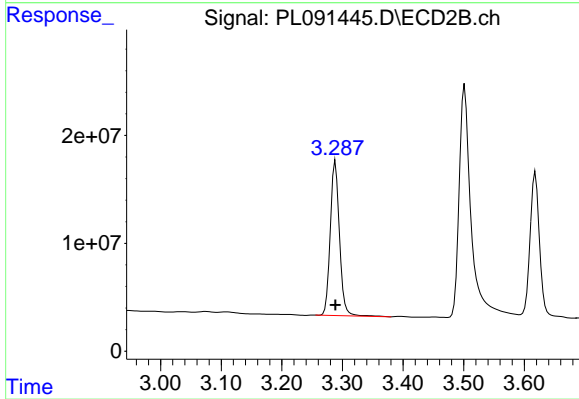
Instrument :
 ECD_L
 ClientSampleId :



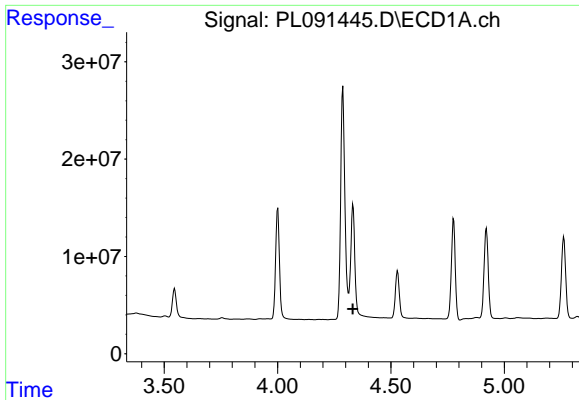
#1 Tetrachloro-m-xylene
 R.T.: 2.786 min
 Delta R.T.: 0.000 min
 Response: 36954880
 Conc: 18.93 ng/ml



#2 alpha-BHC
 R.T.: 4.001 min
 Delta R.T.: 0.002 min
 Response: 133536974
 Conc: 44.54 ng/ml

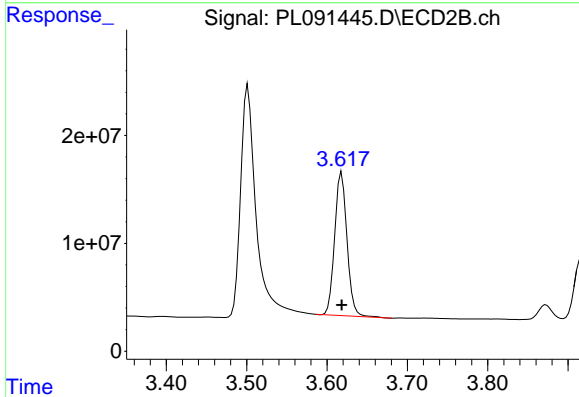


#2 alpha-BHC
 R.T.: 3.288 min
 Delta R.T.: 0.000 min
 Response: 151322896
 Conc: 54.56 ng/ml

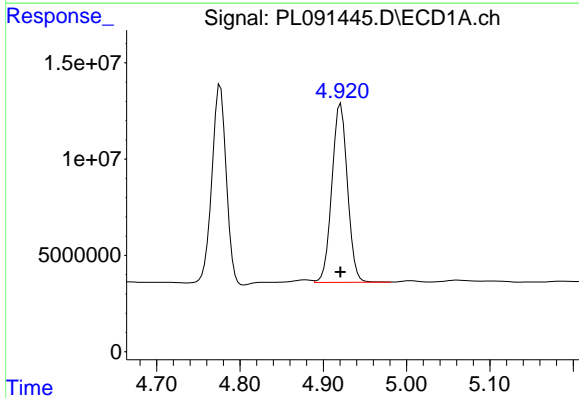


#3 gamma-BHC (Lindane)
 R.T.: 4.333 min
 Delta R.T.: 0.001 min
 Response: -501116281
 Conc: N.D.

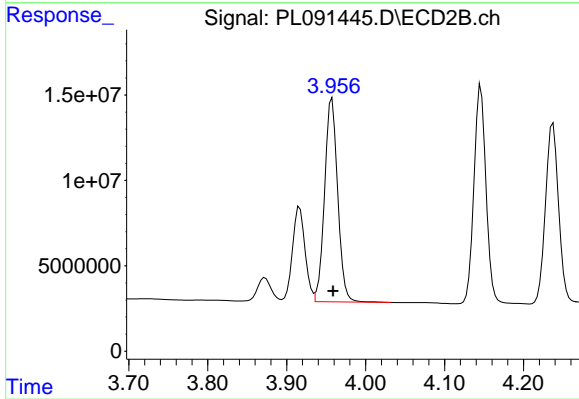
Instrument :
 ECD_L
 ClientSampleId :



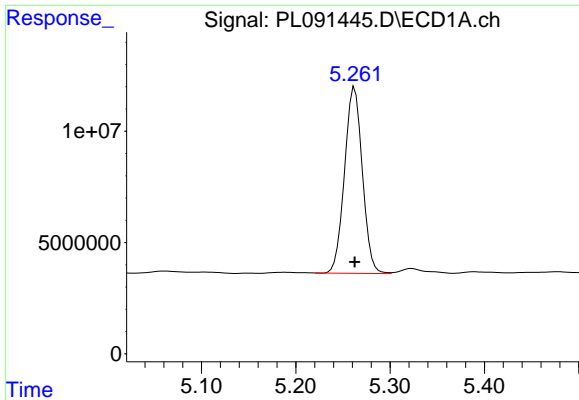
#3 gamma-BHC (Lindane)
 R.T.: 3.618 min
 Delta R.T.: 0.000 min
 Response: 141682663
 Conc: 53.79 ng/ml



#4 Heptachlor
 R.T.: 4.921 min
 Delta R.T.: 0.000 min
 Response: 120718740
 Conc: 45.33 ng/ml



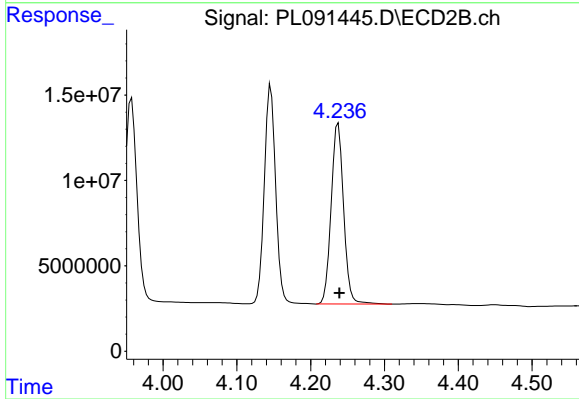
#4 Heptachlor
 R.T.: 3.957 min
 Delta R.T.: -0.001 min
 Response: 137704264
 Conc: 53.32 ng/ml



#5 Aldrin

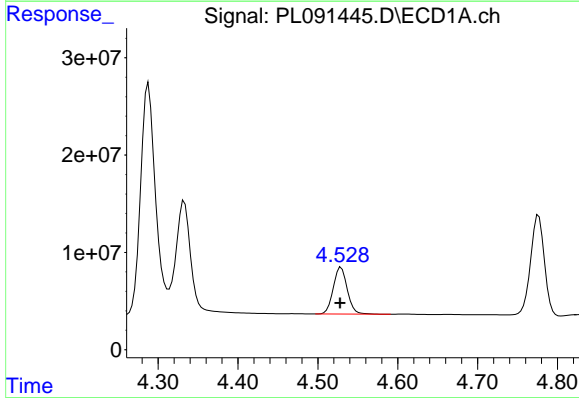
R.T.: 5.262 min
 Delta R.T.: 0.000 min
 Response: 109985915
 Conc: 42.62 ng/ml

Instrument :
 ECD_L
 ClientSampleId :



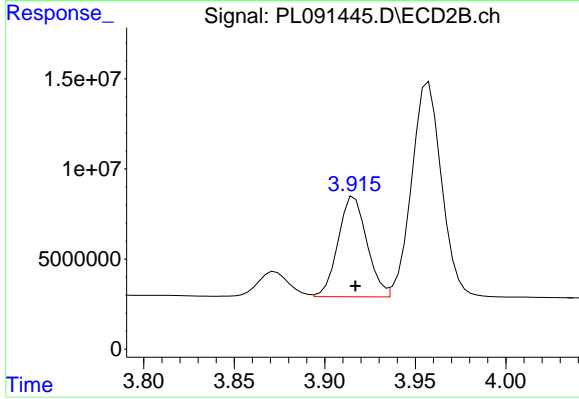
#5 Aldrin

R.T.: 4.237 min
 Delta R.T.: -0.001 min
 Response: 124169593
 Conc: 50.49 ng/ml



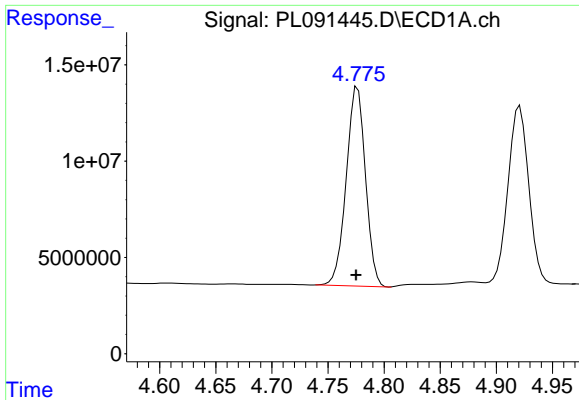
#6 beta-BHC

R.T.: 4.529 min
 Delta R.T.: 0.001 min
 Response: 58536135
 Conc: 43.28 ng/ml



#6 beta-BHC

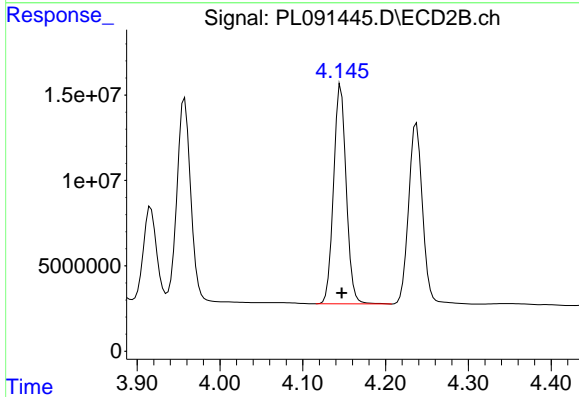
R.T.: 3.916 min
 Delta R.T.: 0.000 min
 Response: 61573639
 Conc: 52.31 ng/ml



#7 delta-BHC

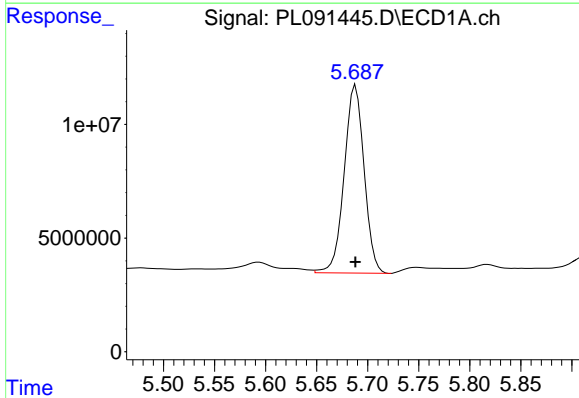
R.T.: 4.776 min
 Delta R.T.: 0.001 min
 Response: 123431624
 Conc: 45.34 ng/ml

Instrument :
 ECD_L
 ClientSampleId :



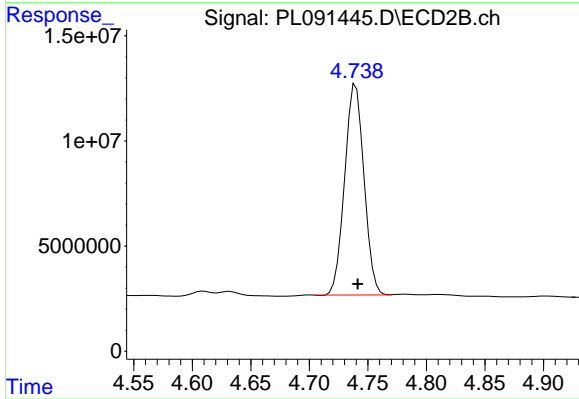
#7 delta-BHC

R.T.: 4.146 min
 Delta R.T.: -0.001 min
 Response: 136566345
 Conc: 53.89 ng/ml



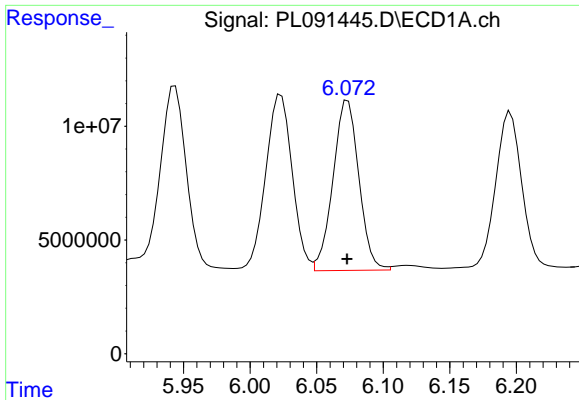
#8 Heptachlor epoxide

R.T.: 5.688 min
 Delta R.T.: 0.000 min
 Response: 112294023
 Conc: 45.90 ng/ml



#8 Heptachlor epoxide

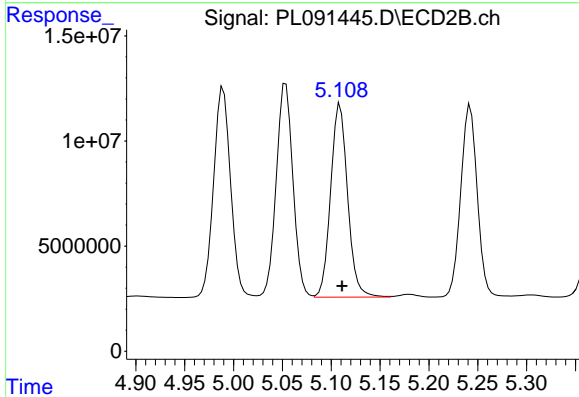
R.T.: 4.740 min
 Delta R.T.: -0.002 min
 Response: 115289434
 Conc: 51.13 ng/ml



#9 Endosulfan I

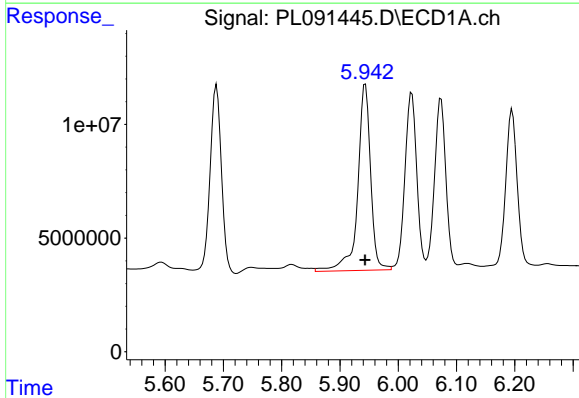
R.T.: 6.073 min
 Delta R.T.: 0.000 min
 Response: 101037862
 Conc: 45.00 ng/ml

Instrument :
 ECD_L
 ClientSampleId :



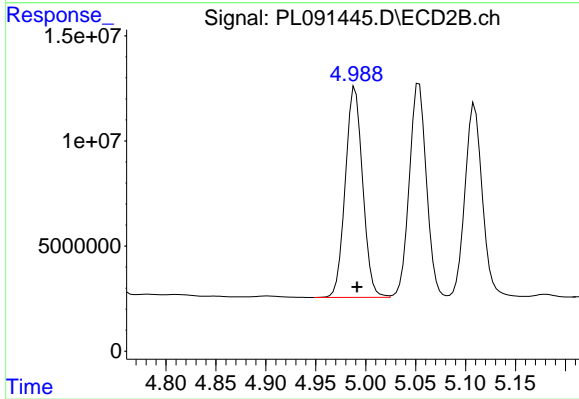
#9 Endosulfan I

R.T.: 5.109 min
 Delta R.T.: -0.002 min
 Response: 111629162
 Conc: 52.90 ng/ml



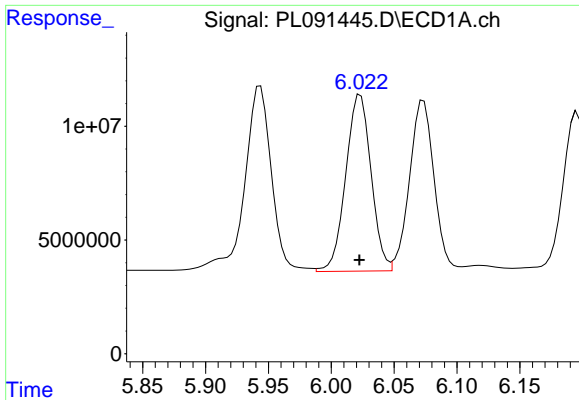
#10 gamma-Chlordane

R.T.: 5.944 min
 Delta R.T.: 0.000 min
 Response: 126064851
 Conc: 52.17 ng/ml



#10 gamma-Chlordane

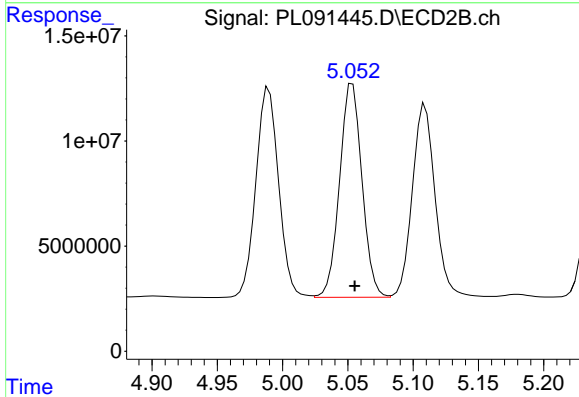
R.T.: 4.989 min
 Delta R.T.: -0.002 min
 Response: 121138248
 Conc: 51.24 ng/ml



#11 alpha-Chlordane

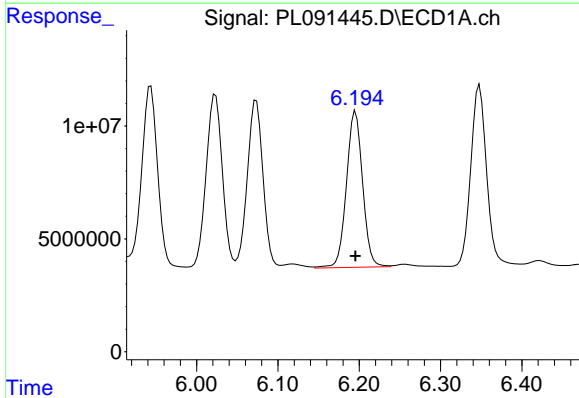
R.T.: 6.023 min
 Delta R.T.: 0.000 min
 Response: 109025327
 Conc: 45.28 ng/ml

Instrument :
 ECD_L
 ClientSampleId :



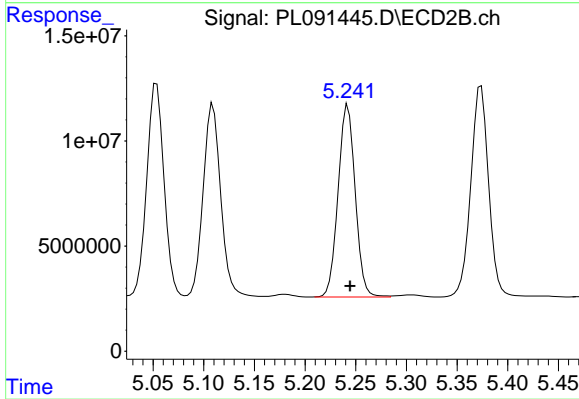
#11 alpha-Chlordane

R.T.: 5.054 min
 Delta R.T.: -0.002 min
 Response: 121549691
 Conc: 51.67 ng/ml



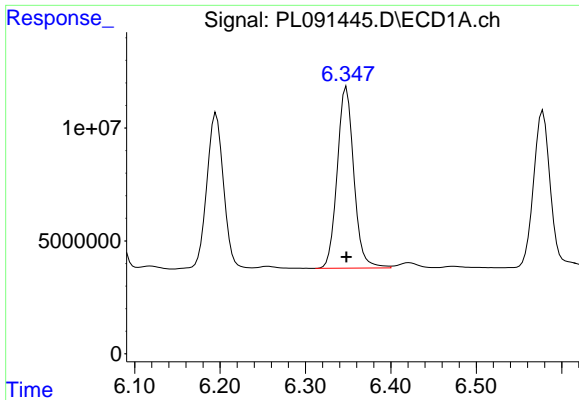
#12 4,4'-DDE

R.T.: 6.195 min
 Delta R.T.: 0.000 min
 Response: 95192267
 Conc: 45.50 ng/ml



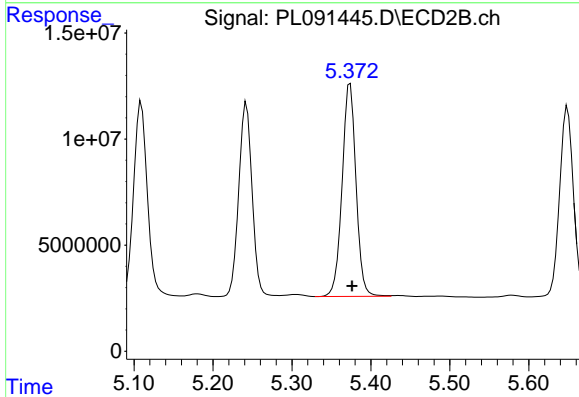
#12 4,4'-DDE

R.T.: 5.242 min
 Delta R.T.: -0.002 min
 Response: 107259941
 Conc: 51.34 ng/ml

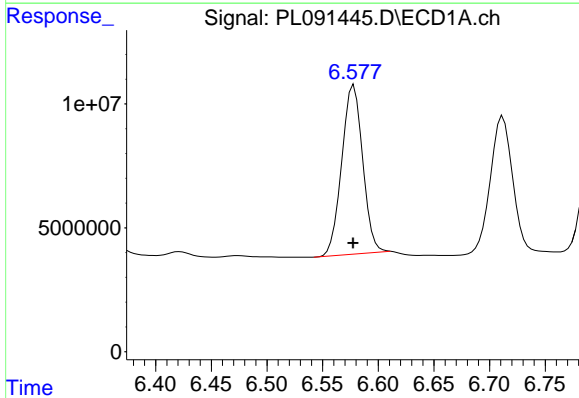


#13 Dieldrin
 R.T.: 6.348 min
 Delta R.T.: 0.000 min
 Response: 108720166
 Conc: 46.16 ng/ml

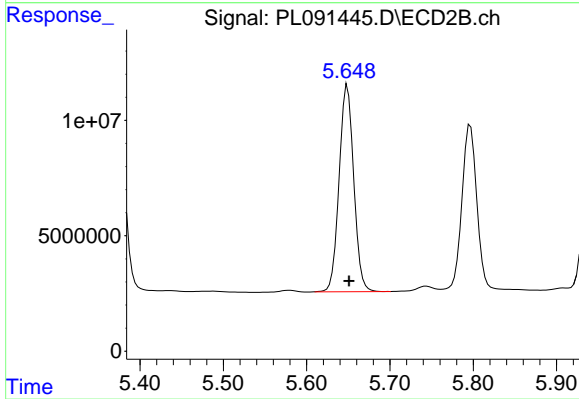
Instrument :
 ECD_L
 ClientSampleId :



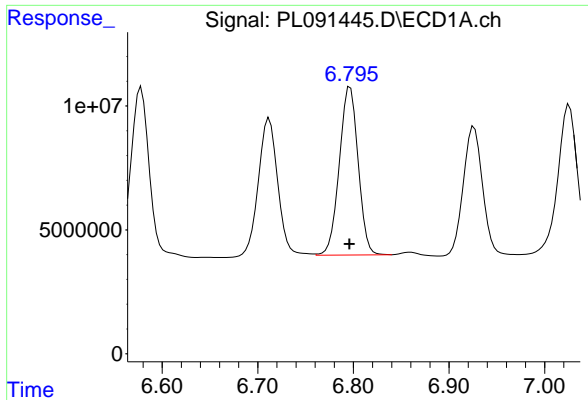
#13 Dieldrin
 R.T.: 5.374 min
 Delta R.T.: -0.002 min
 Response: 123061585
 Conc: 54.03 ng/ml



#14 Endrin
 R.T.: 6.578 min
 Delta R.T.: 0.000 min
 Response: 89527898
 Conc: 46.17 ng/ml

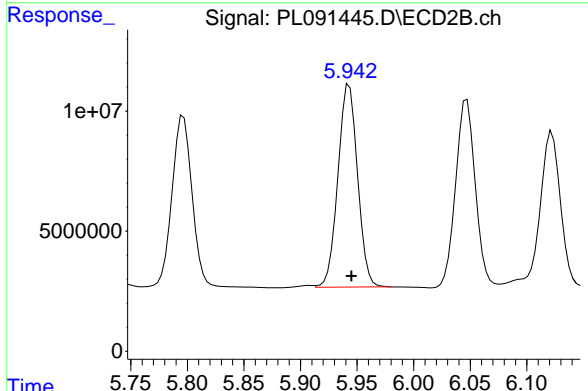


#14 Endrin
 R.T.: 5.649 min
 Delta R.T.: -0.002 min
 Response: 109071545
 Conc: 53.54 ng/ml

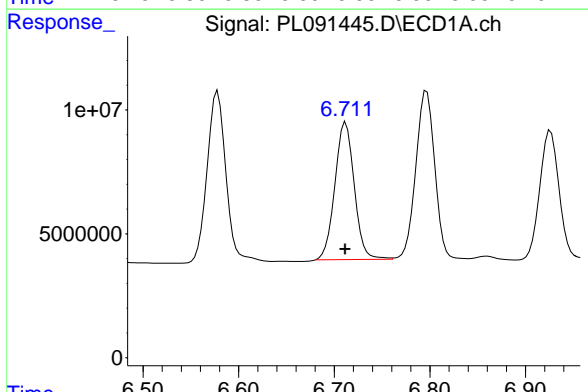


#15 Endosulfan II
 R.T.: 6.797 min
 Delta R.T.: 0.000 min
 Response: 93058008
 Conc: 45.98 ng/ml

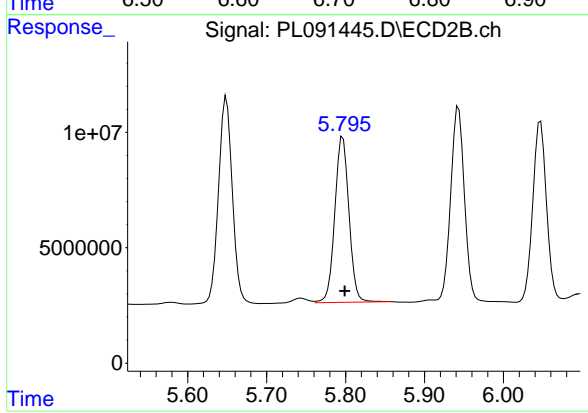
Instrument :
 ECD_L
 ClientSampleId :



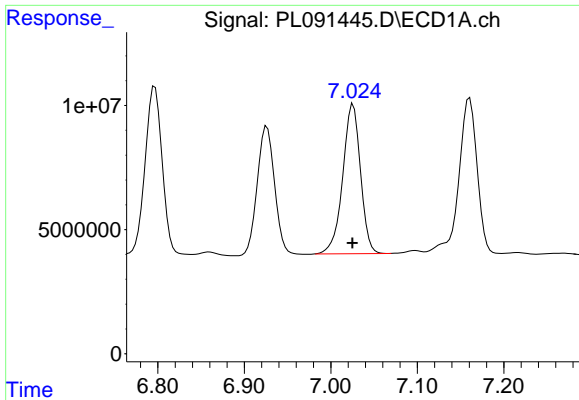
#15 Endosulfan II
 R.T.: 5.943 min
 Delta R.T.: -0.002 min
 Response: 101980255
 Conc: 52.71 ng/ml



#16 4,4'-DDD
 R.T.: 6.712 min
 Delta R.T.: 0.000 min
 Response: 78107622
 Conc: 51.68 ng/ml



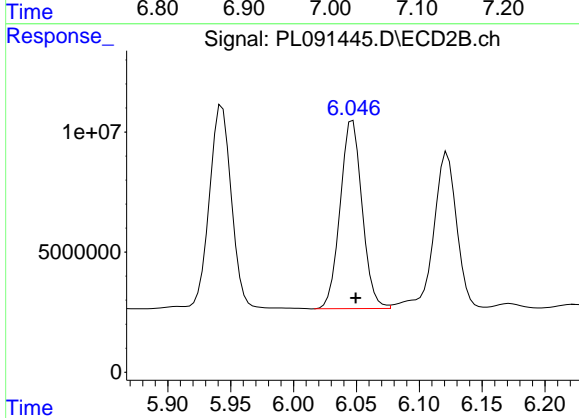
#16 4,4'-DDD
 R.T.: 5.797 min
 Delta R.T.: -0.002 min
 Response: 89500734
 Conc: 54.22 ng/ml



#17 4,4'-DDT

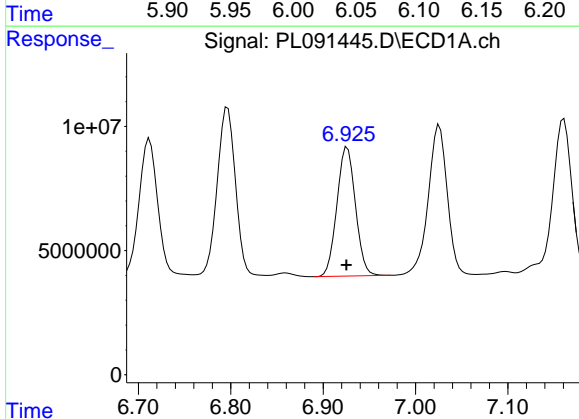
R.T.: 7.026 min
 Delta R.T.: 0.000 min
 Response: 85690036
 Conc: 48.27 ng/ml

Instrument :
 ECD_L
 ClientSampleId :



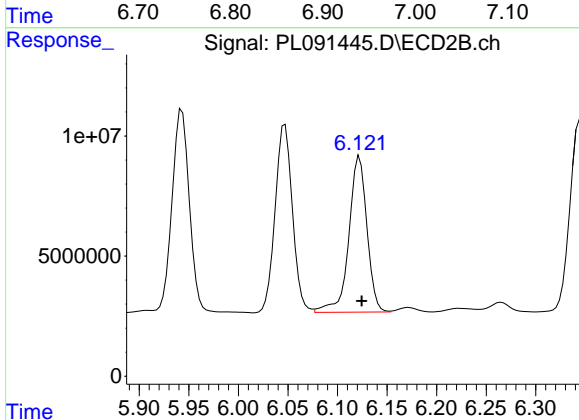
#17 4,4'-DDT

R.T.: 6.047 min
 Delta R.T.: -0.002 min
 Response: 95194577
 Conc: 53.59 ng/ml



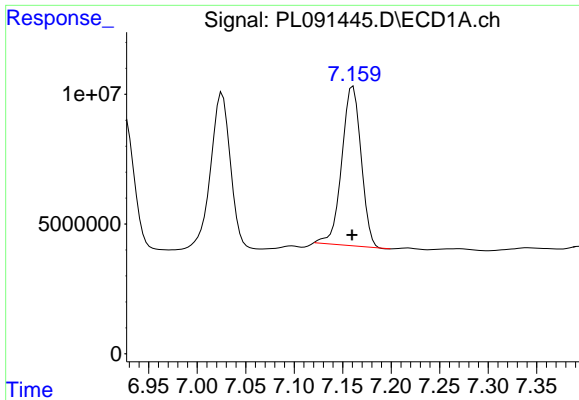
#18 Endrin aldehyde

R.T.: 6.926 min
 Delta R.T.: 0.000 min
 Response: 72574152
 Conc: 45.46 ng/ml



#18 Endrin aldehyde

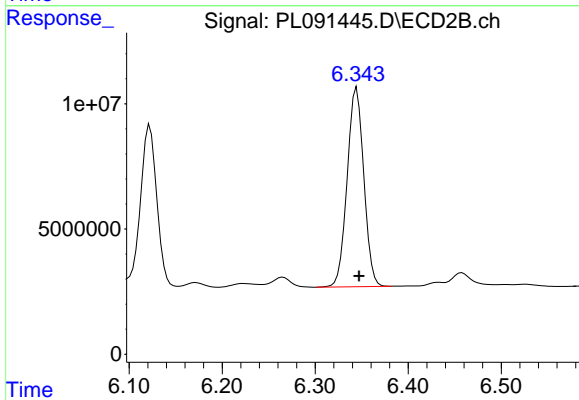
R.T.: 6.122 min
 Delta R.T.: -0.002 min
 Response: 82582695
 Conc: 53.02 ng/ml



#19 Endosulfan Sulfate

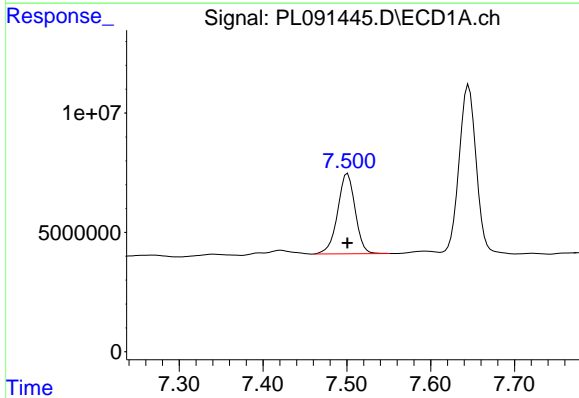
R.T.: 7.161 min
 Delta R.T.: 0.001 min
 Response: 85281691
 Conc: 44.45 ng/ml

Instrument :
 ECD_L
 ClientSampleId :



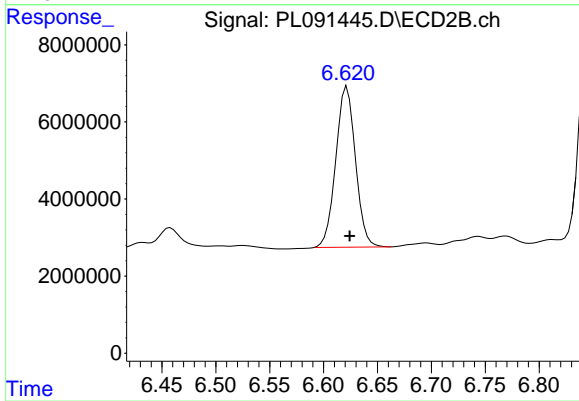
#19 Endosulfan Sulfate

R.T.: 6.345 min
 Delta R.T.: -0.003 min
 Response: 98735464
 Conc: 51.21 ng/ml



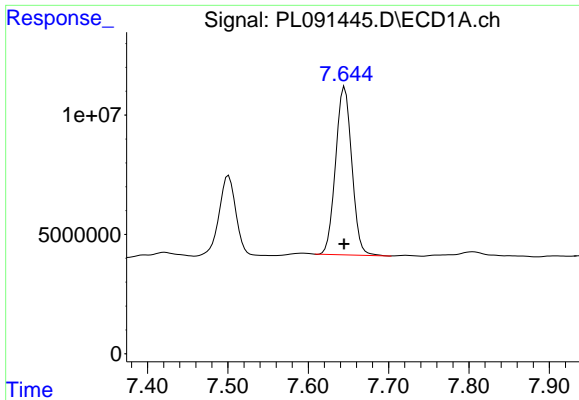
#20 Methoxychlor

R.T.: 7.501 min
 Delta R.T.: 0.000 min
 Response: 48918391
 Conc: 52.03 ng/ml



#20 Methoxychlor

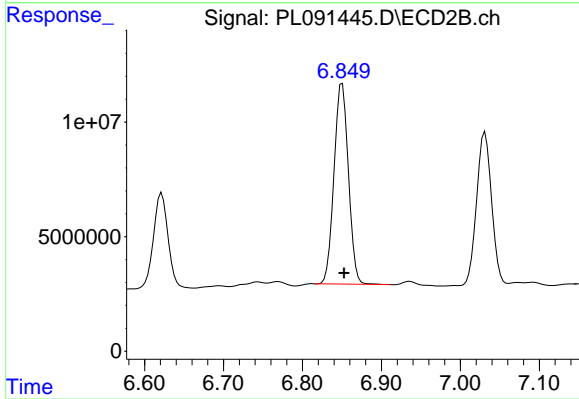
R.T.: 6.622 min
 Delta R.T.: -0.003 min
 Response: 52876341
 Conc: 53.25 ng/ml



#21 Endrin ketone

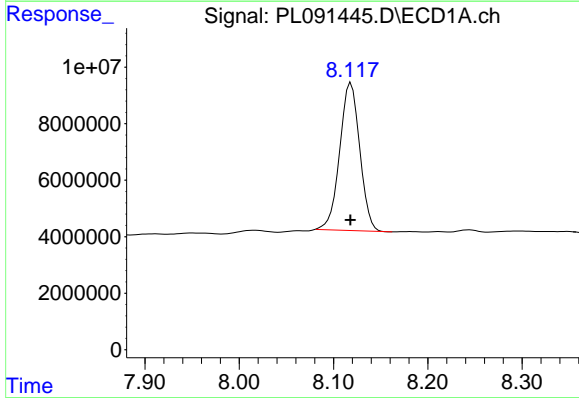
R.T.: 7.645 min
 Delta R.T.: 0.000 min
 Response: 98771095
 Conc: 47.04 ng/ml

Instrument :
 ECD_L
 ClientSampleId :



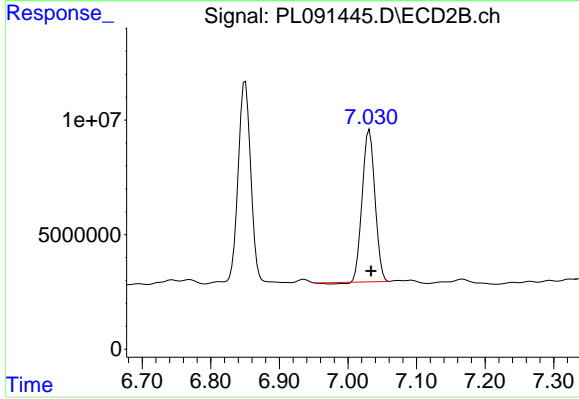
#21 Endrin ketone

R.T.: 6.850 min
 Delta R.T.: -0.002 min
 Response: 110770404
 Conc: 50.86 ng/ml



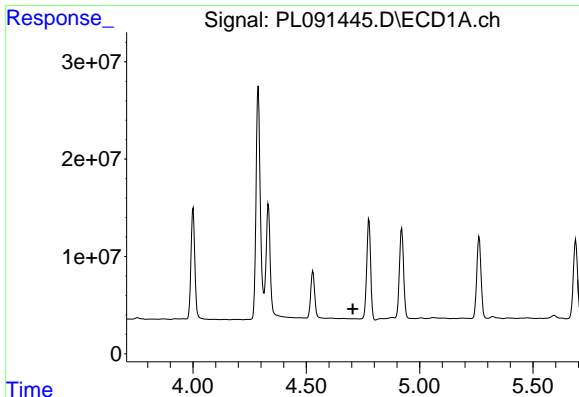
#22 Mirex

R.T.: 8.119 min
 Delta R.T.: 0.000 min
 Response: 77283361
 Conc: 45.43 ng/ml



#22 Mirex

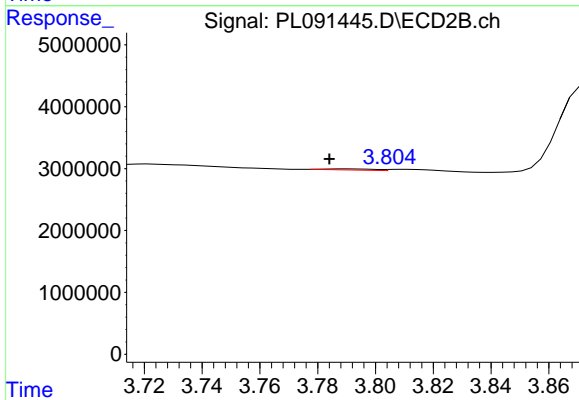
R.T.: 7.031 min
 Delta R.T.: -0.002 min
 Response: 84902161
 Conc: 45.49 ng/ml



#23 Chlordane-1

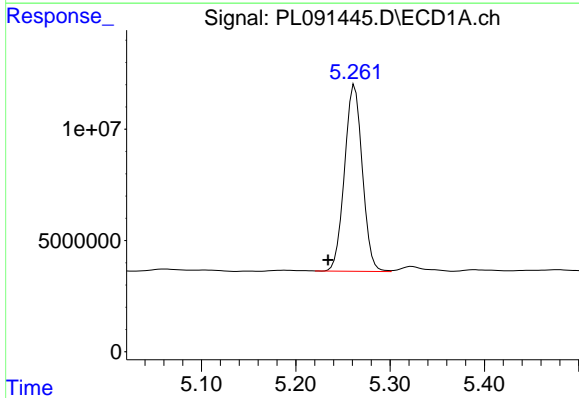
R.T.: 0.000 min
 Exp R.T.: 4.706 min
 Response: 0
 Conc: N.D.

Instrument :
 ECD_L
 ClientSampleId :



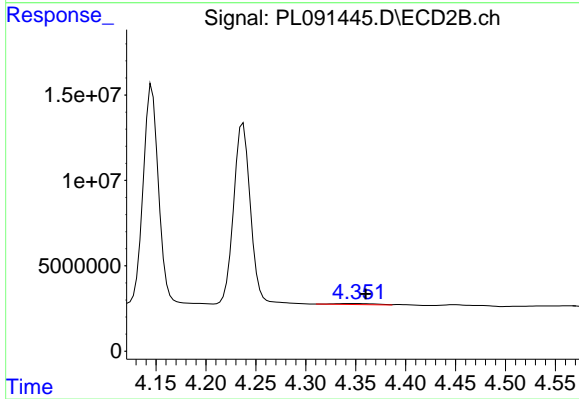
#23 Chlordane-1

R.T.: 3.790 min
 Delta R.T.: 0.006 min
 Response: 228699
 Conc: 3.14 ng/ml



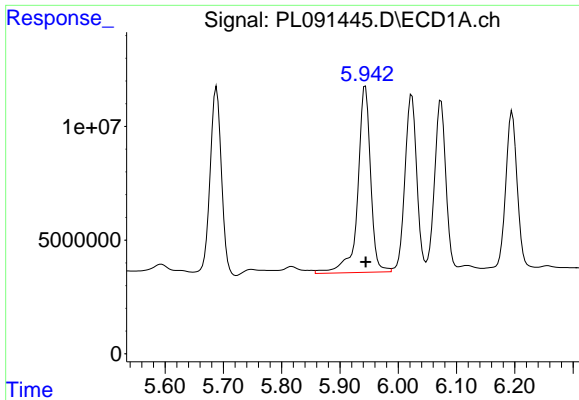
#24 Chlordane-2

R.T.: 5.262 min
 Delta R.T.: 0.028 min
 Response: 109985915
 Conc: 1083.20 ng/ml



#24 Chlordane-2

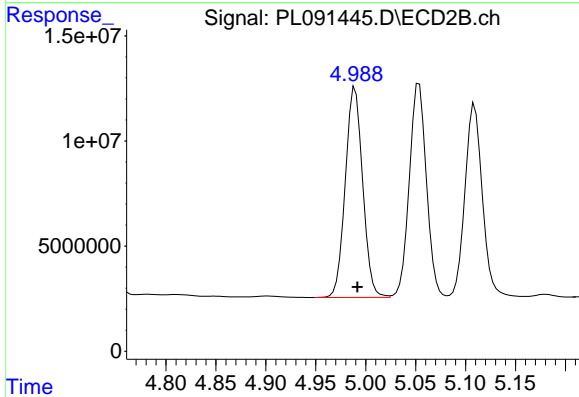
R.T.: 4.350 min
 Delta R.T.: -0.010 min
 Response: 1810152
 Conc: 19.27 ng/ml



#25 Chlordane-3

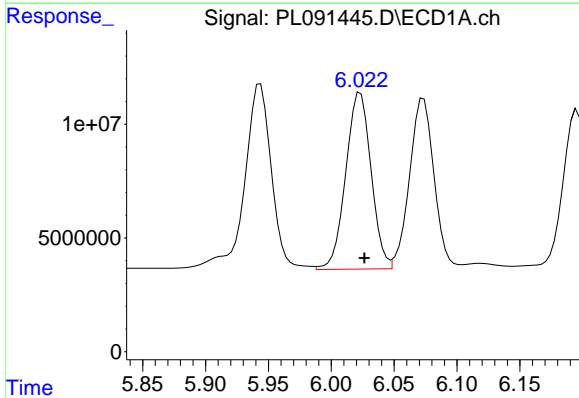
R.T.: 5.944 min
 Delta R.T.: 0.000 min
 Response: 126064851
 Conc: 362.96 ng/ml

Instrument :
 ECD_L
 ClientSampleId :



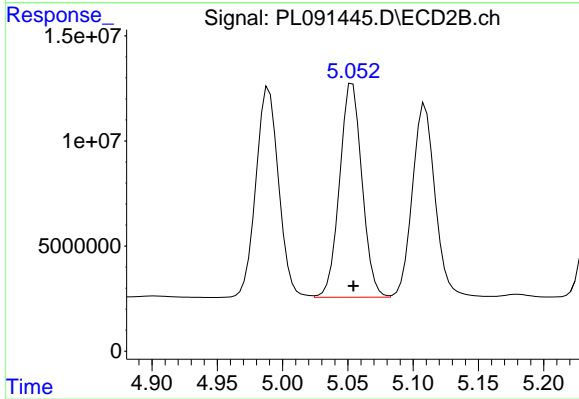
#25 Chlordane-3

R.T.: 4.989 min
 Delta R.T.: -0.002 min
 Response: 121138248
 Conc: 498.85 ng/ml



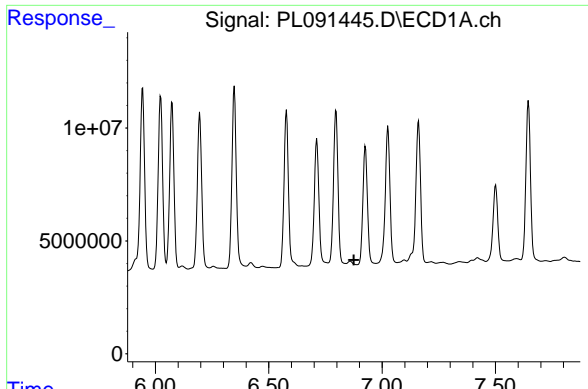
#26 Chlordane-4

R.T.: 6.023 min
 Delta R.T.: -0.003 min
 Response: 109025327
 Conc: 259.21 ng/ml



#26 Chlordane-4

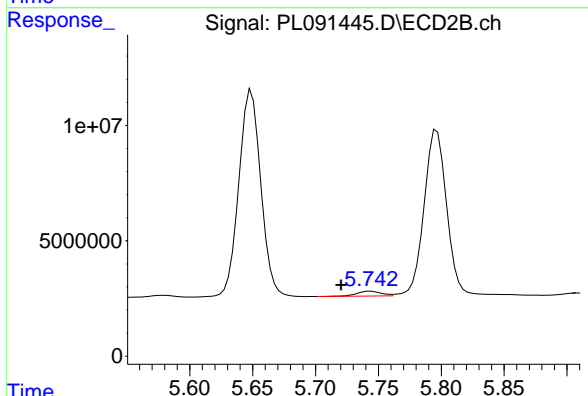
R.T.: 5.054 min
 Delta R.T.: 0.000 min
 Response: 121549691
 Conc: 521.30 ng/ml



#27 Chlordane-5

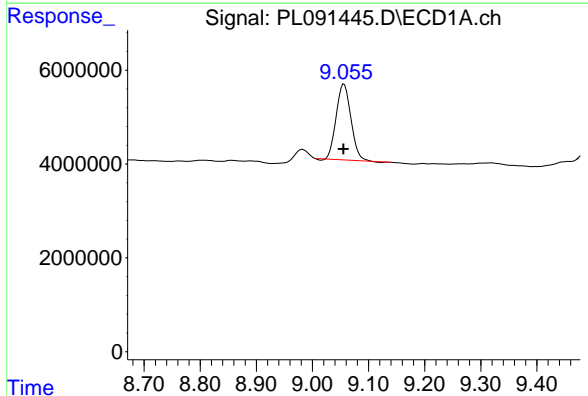
R.T.: 0.000 min
 Exp R.T.: 6.875 min
 Response: 0
 Conc: N.D.

Instrument :
 ECD_L
 ClientSampleId :



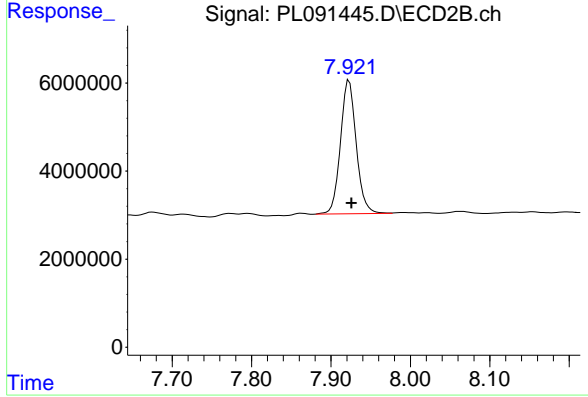
#27 Chlordane-5

R.T.: 5.744 min
 Delta R.T.: 0.023 min
 Response: 2825896
 Conc: 40.82 ng/ml



#28 Decachlorobiphenyl

R.T.: 9.056 min
 Delta R.T.: 0.001 min
 Response: 29190471
 Conc: 19.15 ng/ml



#28 Decachlorobiphenyl

R.T.: 7.923 min
 Delta R.T.: -0.003 min
 Response: 41941960
 Conc: 22.14 ng/ml