

Data Path : Z:\pestpcbsrv\HPCHEM1\ECD_L\Data\PL090124\
 Data File : PL091468.D
 Signal(s) : Signal #1: ECD1A.ch Signal #2: ECD2B.ch
 Acq On : 30 Aug 2024 19:45
 Operator : AR\AJ
 Sample : P3799-09
 Misc :
 ALS Vial : 29 Sample Multiplier: 1

Instrument :
 ECD_L
 ClientSampleId :

Integration File signal 1: autoint1.e
 Integration File signal 2: autoint2.e
 Quant Time: Aug 31 03:42:44 2024
 Quant Method : Z:\pestpcbsrv\HPCHEM1\ECD_L\methods\PL081324.M
 Quant Title : GC Extractables
 QLast Update : Wed Aug 14 13:09:19 2024
 Response via : Initial Calibration
 Integrator: ChemStation

Volume Inj. : 1 µl
 Signal #1 Phase : ZB-MR2 Signal #2 Phase: ZB-MR1
 Signal #1 Info : 30M x 0.32mm x0.2 Signal #2 Info : 30M x 0.32mm x0.5µm

	Compound	RT#1	RT#2	Resp#1	Resp#2	ng/ml	ng/ml

System Monitoring Compounds							
1)	SA Tetrachlo...	3.544	2.785	41093029	43563763	19.138	22.318
28)	SA Decachlor...	9.052	7.921	22334527	28958099	14.650	15.288
Target Compounds							
2)	A alpha-BHC	0.000	3.272f	0	372347	N.D.	0.134 #
3)	MA gamma-BHC...	0.000	3.633	0	339931	N.D.	0.129 #
4)	MA Heptachlor	0.000	3.965	0	162445	N.D.	0.063 #
5)	MB Aldrin	0.000	4.261f	0	3320178	N.D.	1.350 #
6)	B beta-BHC	0.000	3.916	0	215986	N.D.	0.183 #
9)	A Endosulfan I	6.057f	5.110	1756921	103434	0.782	0.049 #
10)	B gamma-Chl...	5.972f	4.975f	1990707	1749582	0.824	0.740
11)	B alpha-Chl...	0.000	5.060	0	349517	N.D.	0.149 #
12)	B 4,4'-DDE	0.000	5.229f	0	198764	N.D.	0.095 #
13)	MA Dieldrin	0.000	5.367	0	321539	N.D.	0.141 #
14)	MA Endrin	0.000	5.665	0	37008	N.D.	0.018 #
15)	B Endosulfa...	0.000	5.936	0	174987	N.D.	0.090 #
16)	A 4,4'-DDD	0.000	5.779f	0	113113	N.D.	0.069 #
17)	MA 4,4'-DDT	0.000	6.061	0	104788	N.D.	0.059 #
18)	B Endrin al...	0.000	6.130	0	108589	N.D.	0.070 #
19)	B Endosulfa...	0.000	6.349	0	172638	N.D.	0.090 #
21)	B Endrin ke...	0.000	6.875f	0	433635	N.D.	0.199 #
23)	Chlordane-1	0.000	3.794	0	462984	N.D.	6.351 #
24)	Chlordane-2	0.000	4.334f	0	456724	N.D.	4.861 #
25)	Chlordane-3	5.972f	4.975	1990707	1749582	5.732	7.205 #
26)	Chlordane-4	0.000	5.060	0	349517	N.D.	1.499 #
27)	Chlordane-5	0.000	5.744f	0	705958	N.D.	10.196 #

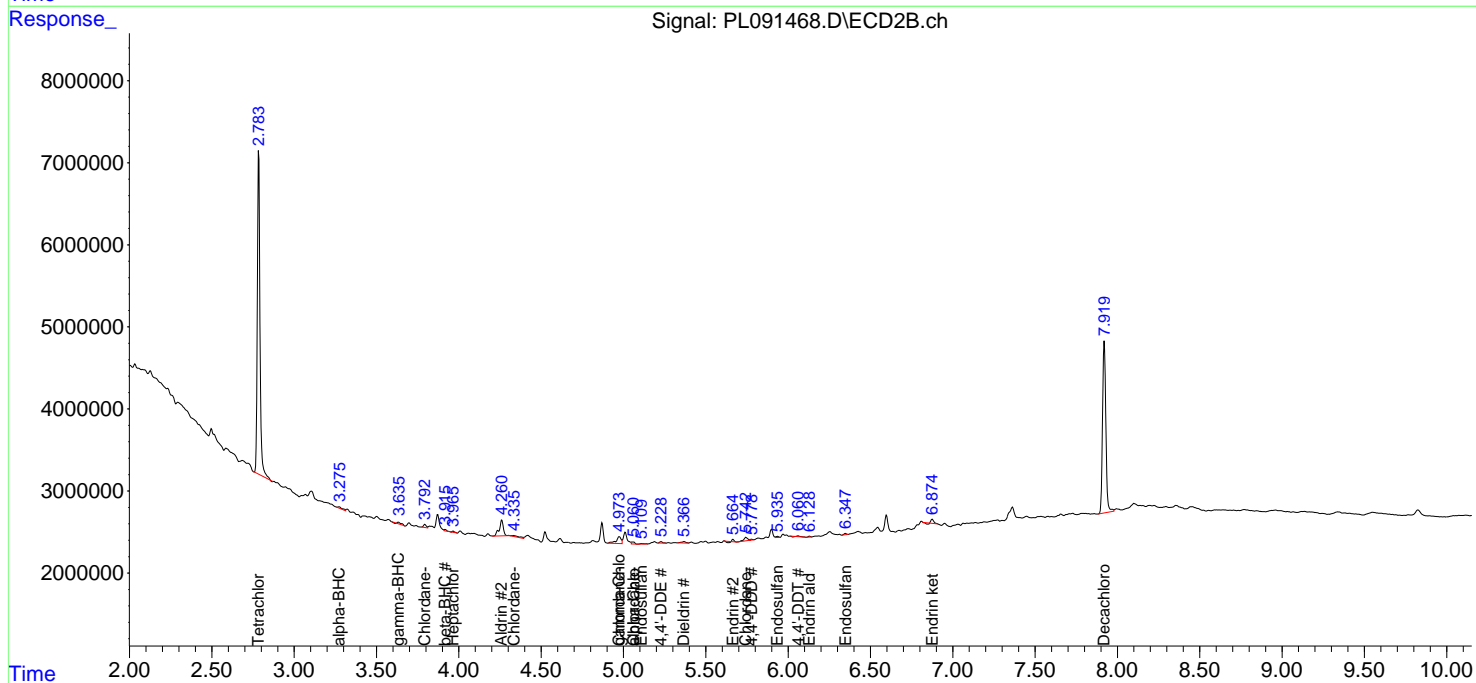
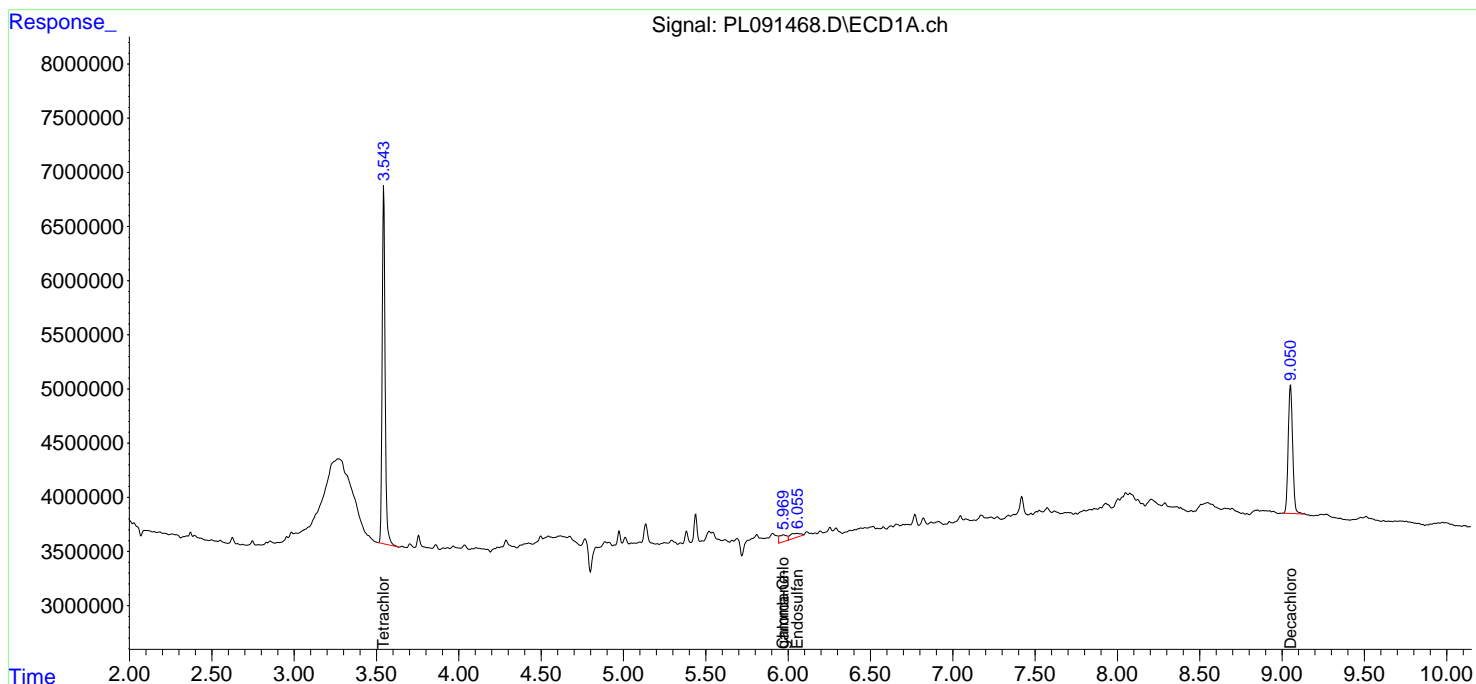
(f)=RT Delta > 1/2 Window (#)=Amounts differ by > 25% (m)=manual int.

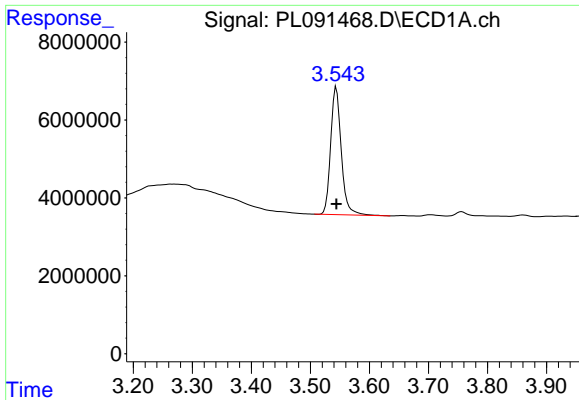
Data Path : Z:\pestpcbsrv\HPCHEM1\ECD_L\Data\PL090124\
 Data File : PL091468.D
 Signal(s) : Signal #1: ECD1A.ch Signal #2: ECD2B.ch
 Acq On : 30 Aug 2024 19:45
 Operator : AR\AJ
 Sample : P3799-09
 Misc :
 ALS Vial : 29 Sample Multiplier: 1

Instrument :
 ECD_L
 ClientSampleId :

Integration File signal 1: autoint1.e
 Integration File signal 2: autoint2.e
 Quant Time: Aug 31 03:42:44 2024
 Quant Method : Z:\pestpcbsrv\HPCHEM1\ECD_L\methods\PL081324.M
 Quant Title : GC Extractables
 QLast Update : Wed Aug 14 13:09:19 2024
 Response via : Initial Calibration
 Integrator: ChemStation

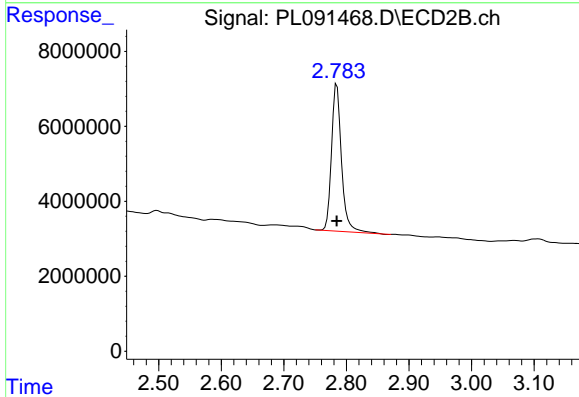
Volume Inj. : 1 µl
 Signal #1 Phase : ZB-MR2 Signal #2 Phase: ZB-MR1
 Signal #1 Info : 30M x 0.32mm x0.2 Signal #2 Info : 30M x 0.32mm x0.5µm



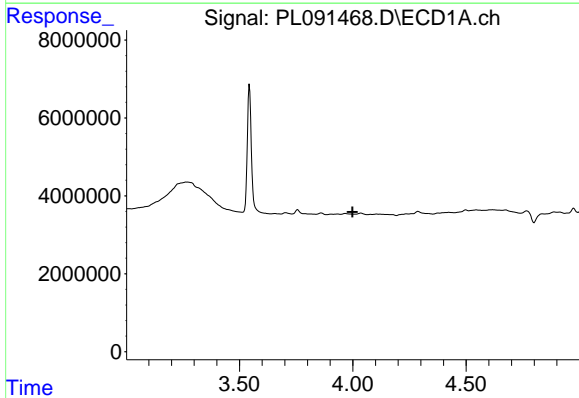


#1 Tetrachloro-m-xylene
 R.T.: 3.544 min
 Delta R.T.: 0.000 min
 Response: 41093029
 Conc: 19.14 ng/ml

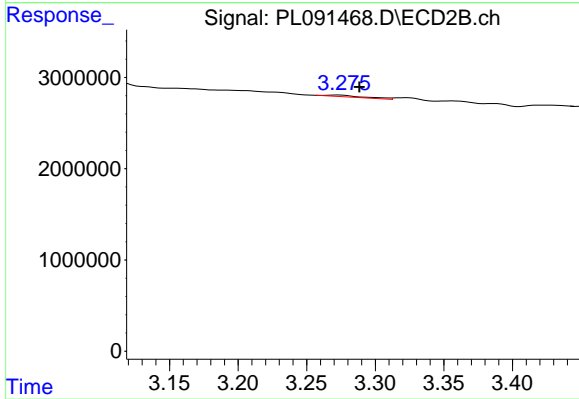
Instrument :
 ECD_L
 ClientSampleId :



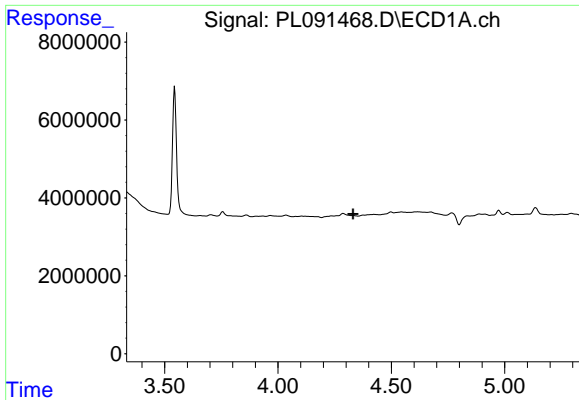
#1 Tetrachloro-m-xylene
 R.T.: 2.785 min
 Delta R.T.: 0.000 min
 Response: 43563763
 Conc: 22.32 ng/ml



#2 alpha-BHC
 R.T.: 0.000 min
 Exp R.T. : 3.999 min
 Response: 0
 Conc: N.D.

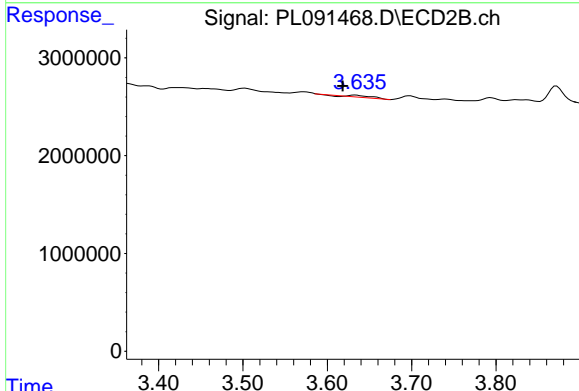


#2 alpha-BHC
 R.T.: 3.272 min
 Delta R.T.: -0.016 min
 Response: 372347
 Conc: 0.13 ng/ml

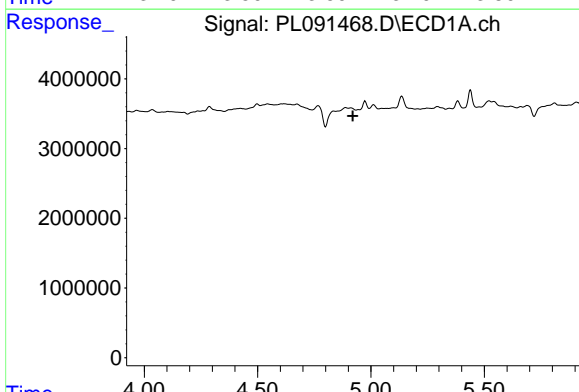


#3 gamma-BHC (Lindane)
 R.T.: 0.000 min
 Exp R.T.: 4.332 min
 Response: 0
 Conc: N.D.

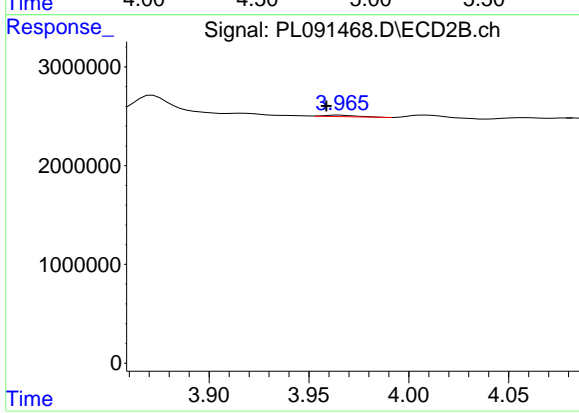
Instrument :
 ECD_L
 ClientSampleId :



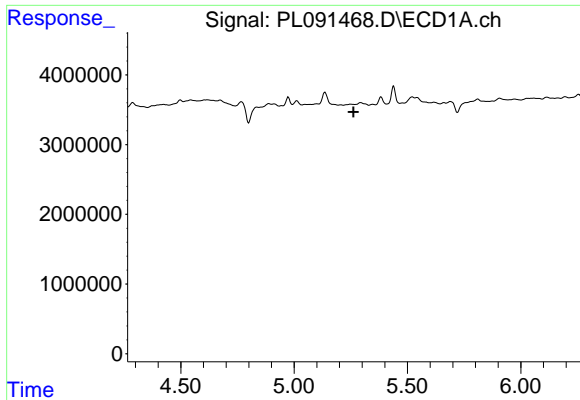
#3 gamma-BHC (Lindane)
 R.T.: 3.633 min
 Delta R.T.: 0.015 min
 Response: 339931
 Conc: 0.13 ng/ml



#4 Heptachlor
 R.T.: 0.000 min
 Exp R.T.: 4.921 min
 Response: 0
 Conc: N.D.

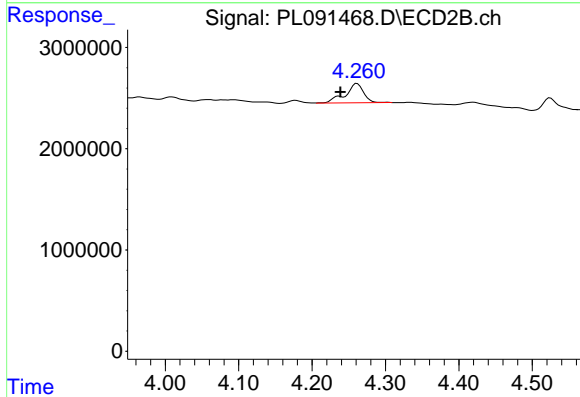


#4 Heptachlor
 R.T.: 3.965 min
 Delta R.T.: 0.007 min
 Response: 162445
 Conc: 0.06 ng/ml

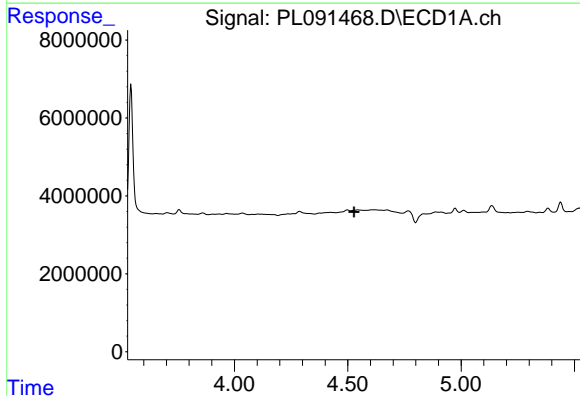


#5 Aldrin
 R.T.: 0.000 min
 Exp R.T.: 5.262 min
 Response: 0
 Conc: N.D.

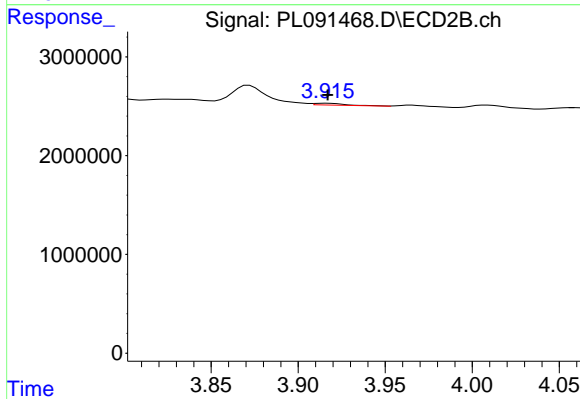
Instrument :
 ECD_L
 ClientSampleId :



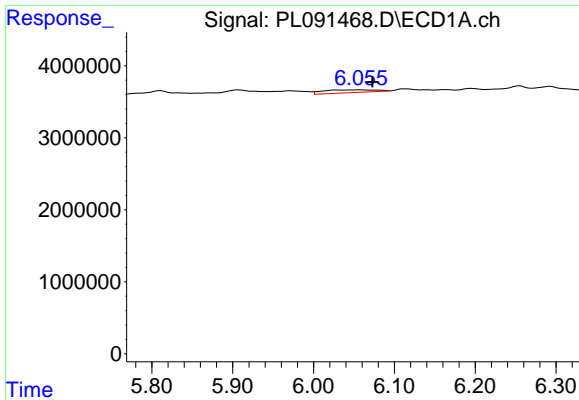
#5 Aldrin
 R.T.: 4.261 min
 Delta R.T.: 0.023 min
 Response: 3320178
 Conc: 1.35 ng/ml



#6 beta-BHC
 R.T.: 0.000 min
 Exp R.T.: 4.528 min
 Response: 0
 Conc: N.D.



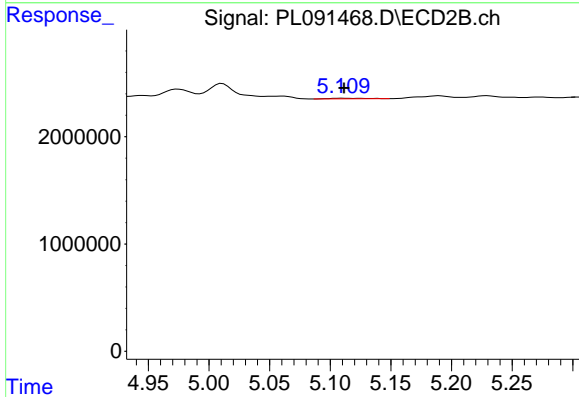
#6 beta-BHC
 R.T.: 3.916 min
 Delta R.T.: 0.000 min
 Response: 215986
 Conc: 0.18 ng/ml



#9 Endosulfan I

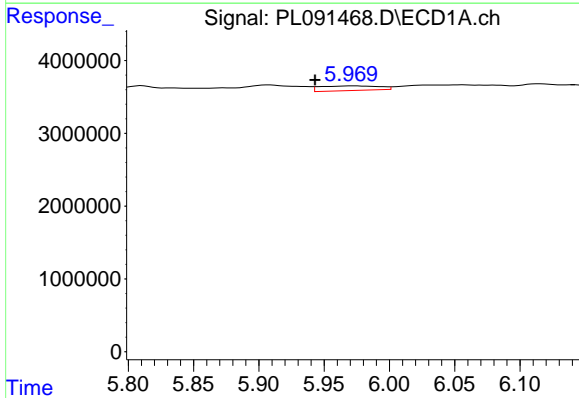
R.T.: 6.057 min
 Delta R.T.: -0.016 min
 Response: 1756921
 Conc: 0.78 ng/ml

Instrument :
 ECD_L
 ClientSampleId :



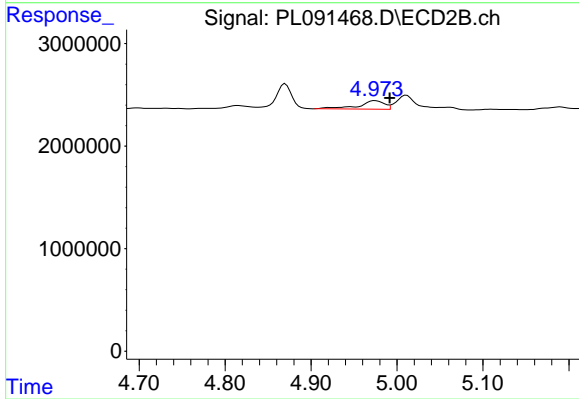
#9 Endosulfan I

R.T.: 5.110 min
 Delta R.T.: 0.000 min
 Response: 103434
 Conc: 0.05 ng/ml



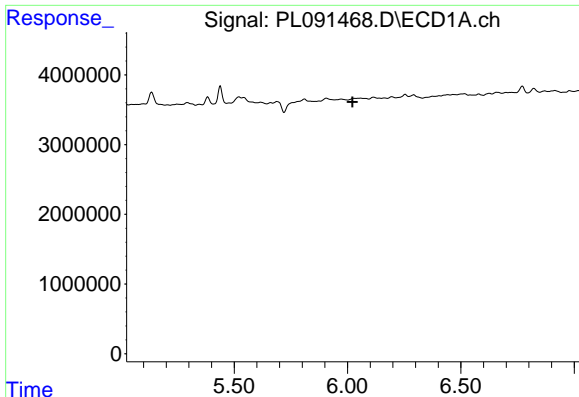
#10 gamma-Chlordane

R.T.: 5.972 min
 Delta R.T.: 0.029 min
 Response: 1990707
 Conc: 0.82 ng/ml



#10 gamma-Chlordane

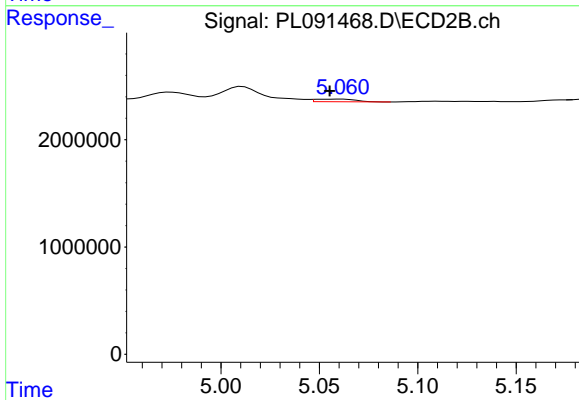
R.T.: 4.975 min
 Delta R.T.: -0.017 min
 Response: 1749582
 Conc: 0.74 ng/ml



#11 alpha-Chlordane

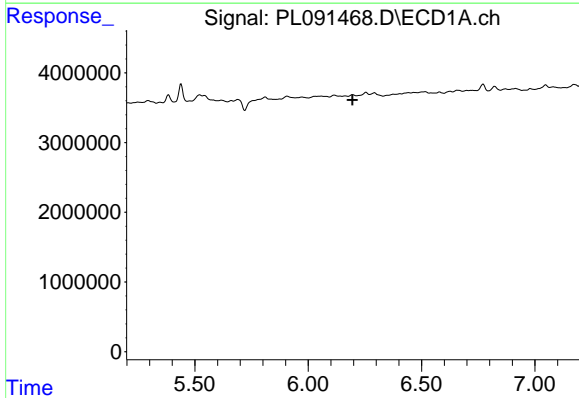
R.T.: 0.000 min
 Exp R.T. : 6.022 min
 Response: 0
 Conc: N.D.

Instrument :
 ECD_L
 ClientSampleId :



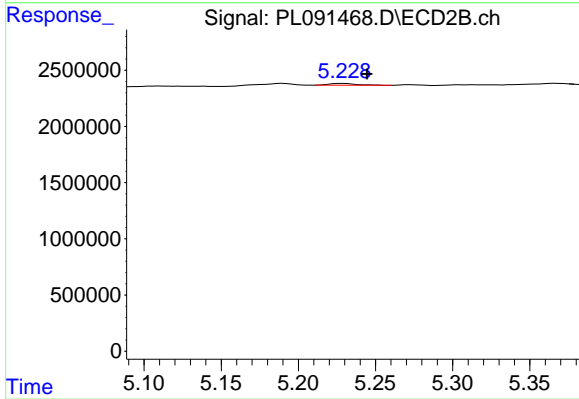
#11 alpha-Chlordane

R.T.: 5.060 min
 Delta R.T.: 0.004 min
 Response: 349517
 Conc: 0.15 ng/ml



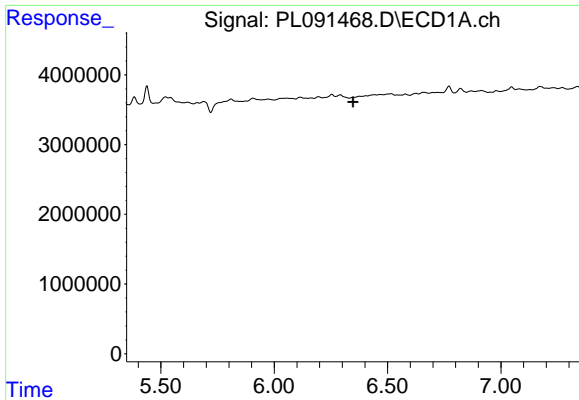
#12 4,4'-DDE

R.T.: 0.000 min
 Exp R.T. : 6.195 min
 Response: 0
 Conc: N.D.



#12 4,4'-DDE

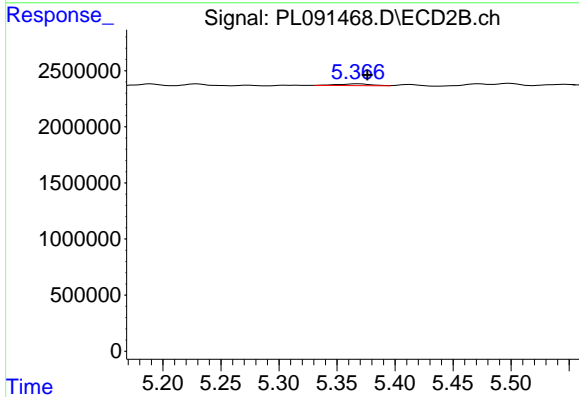
R.T.: 5.229 min
 Delta R.T.: -0.015 min
 Response: 198764
 Conc: 0.10 ng/ml



#13 Dieldrin

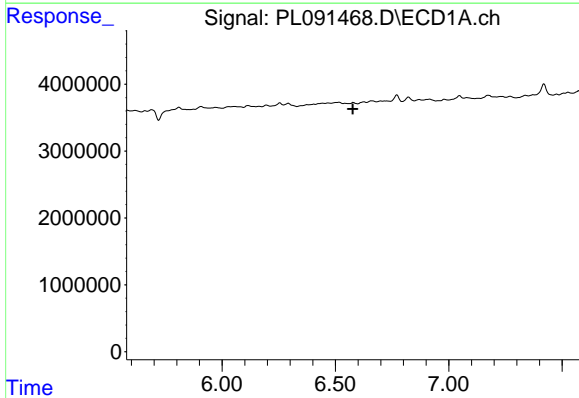
R.T.: 0.000 min
 Exp R.T. : 6.348 min
 Response: 0
 Conc: N.D.

Instrument :
 ECD_L
 ClientSampleId :



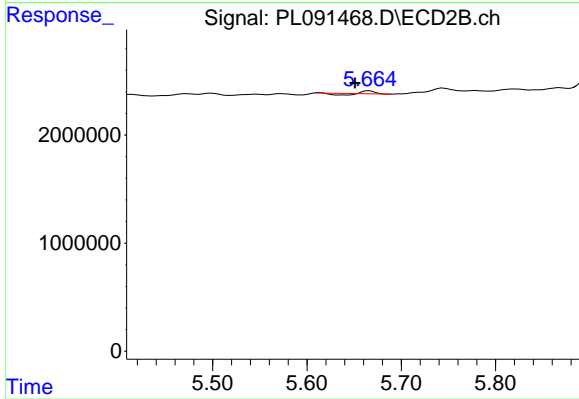
#13 Dieldrin

R.T.: 5.367 min
 Delta R.T.: -0.009 min
 Response: 321539
 Conc: 0.14 ng/ml



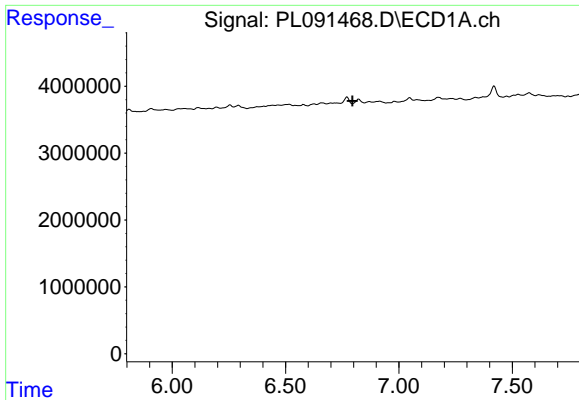
#14 Endrin

R.T.: 0.000 min
 Exp R.T. : 6.577 min
 Response: 0
 Conc: N.D.



#14 Endrin

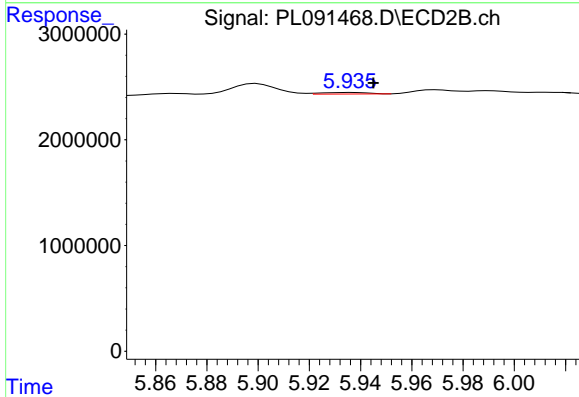
R.T.: 5.665 min
 Delta R.T.: 0.014 min
 Response: 37008
 Conc: 0.02 ng/ml



#15 Endosulfan II

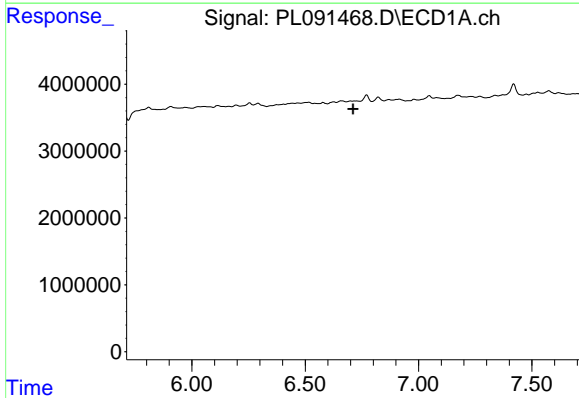
R.T.: 0.000 min
 Exp R.T.: 6.796 min
 Response: 0
 Conc: N.D.

Instrument :
 ECD_L
 ClientSampleId :



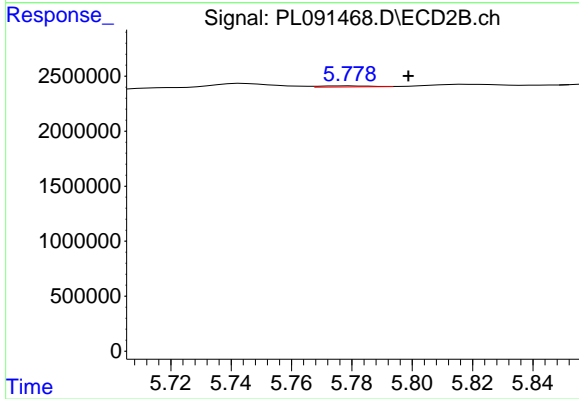
#15 Endosulfan II

R.T.: 5.936 min
 Delta R.T.: -0.009 min
 Response: 174987
 Conc: 0.09 ng/ml



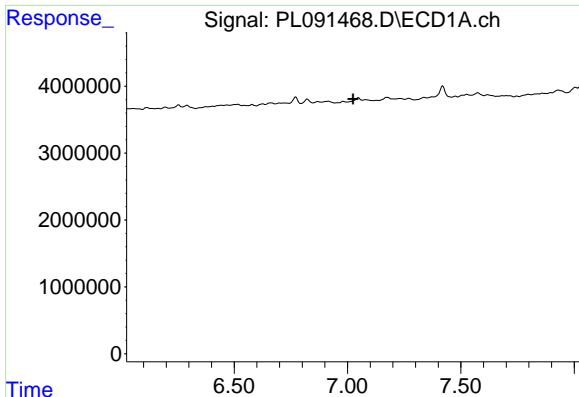
#16 4,4'-DDD

R.T.: 0.000 min
 Exp R.T.: 6.711 min
 Response: 0
 Conc: N.D.



#16 4,4'-DDD

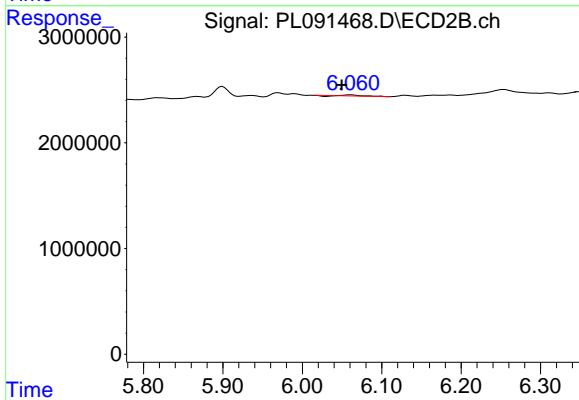
R.T.: 5.779 min
 Delta R.T.: -0.019 min
 Response: 113113
 Conc: 0.07 ng/ml



#17 4,4'-DDT

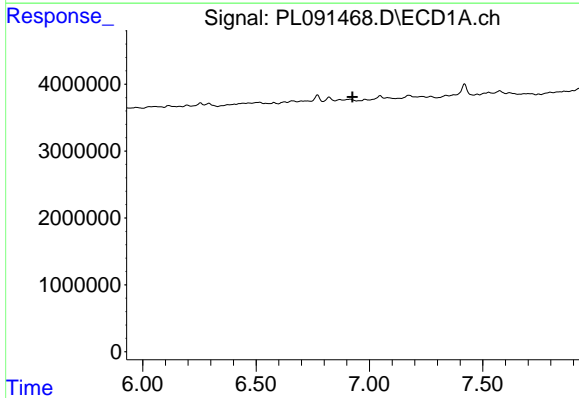
R.T.: 0.000 min
 Exp R.T. : 7.025 min
 Response: 0
 Conc: N.D.

Instrument :
 ECD_L
 ClientSampleId :



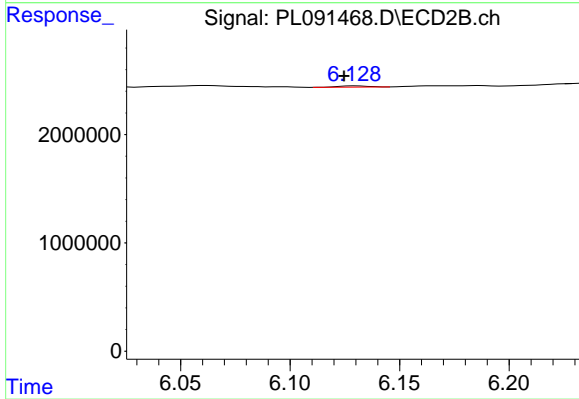
#17 4,4'-DDT

R.T.: 6.061 min
 Delta R.T.: 0.012 min
 Response: 104788
 Conc: 0.06 ng/ml



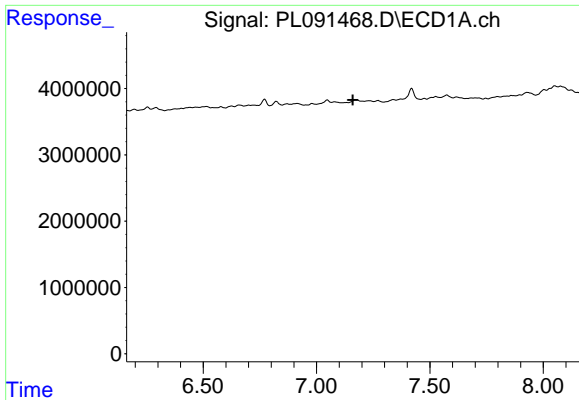
#18 Endrin aldehyde

R.T.: 0.000 min
 Exp R.T. : 6.925 min
 Response: 0
 Conc: N.D.



#18 Endrin aldehyde

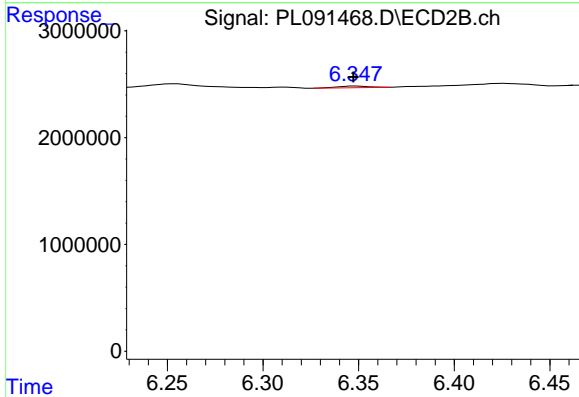
R.T.: 6.130 min
 Delta R.T.: 0.005 min
 Response: 108589
 Conc: 0.07 ng/ml



#19 Endosulfan Sulfate

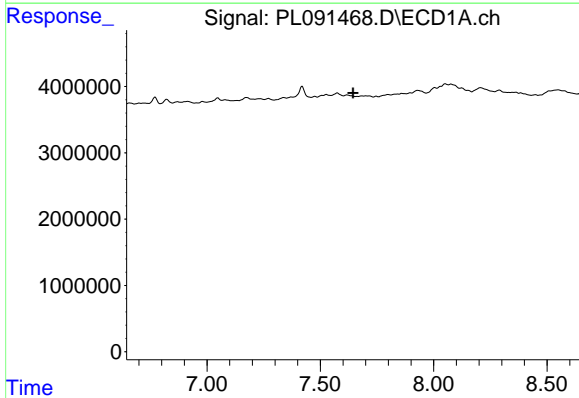
R.T.: 0.000 min
 Exp R.T.: 7.160 min
 Response: 0
 Conc: N.D.

Instrument :
 ECD_L
 ClientSampleId :



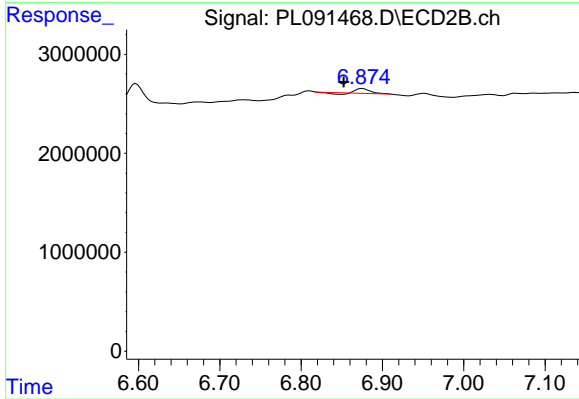
#19 Endosulfan Sulfate

R.T.: 6.349 min
 Delta R.T.: 0.001 min
 Response: 172638
 Conc: 0.09 ng/ml



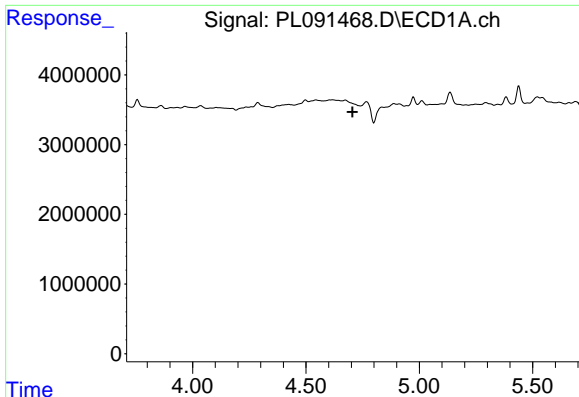
#21 Endrin ketone

R.T.: 0.000 min
 Exp R.T.: 7.644 min
 Response: 0
 Conc: N.D.



#21 Endrin ketone

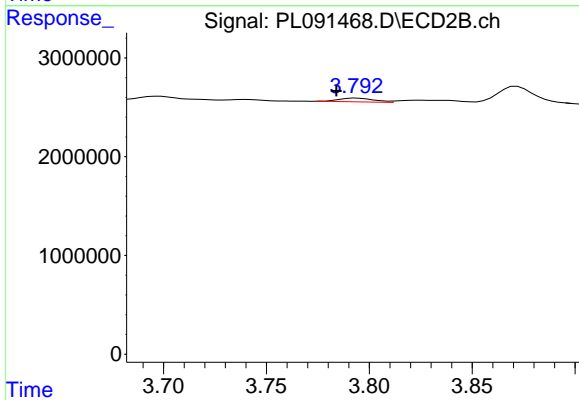
R.T.: 6.875 min
 Delta R.T.: 0.023 min
 Response: 433635
 Conc: 0.20 ng/ml



#23 Chlordane-1

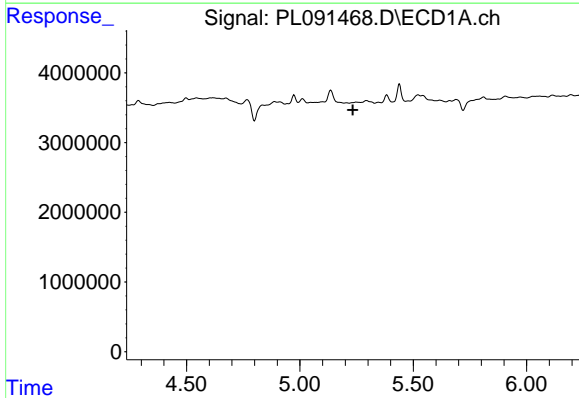
R.T.: 0.000 min
 Exp R.T. : 4.706 min
 Response: 0
 Conc: N.D.

Instrument :
 ECD_L
 ClientSampleId :



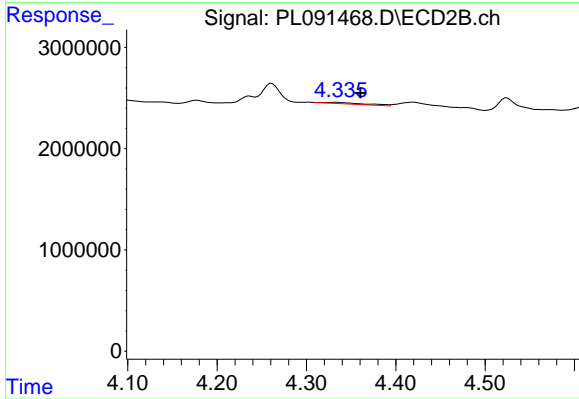
#23 Chlordane-1

R.T.: 3.794 min
 Delta R.T.: 0.010 min
 Response: 462984
 Conc: 6.35 ng/ml



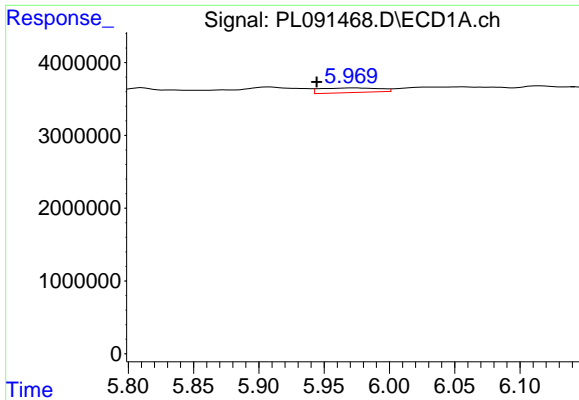
#24 Chlordane-2

R.T.: 0.000 min
 Exp R.T. : 5.234 min
 Response: 0
 Conc: N.D.



#24 Chlordane-2

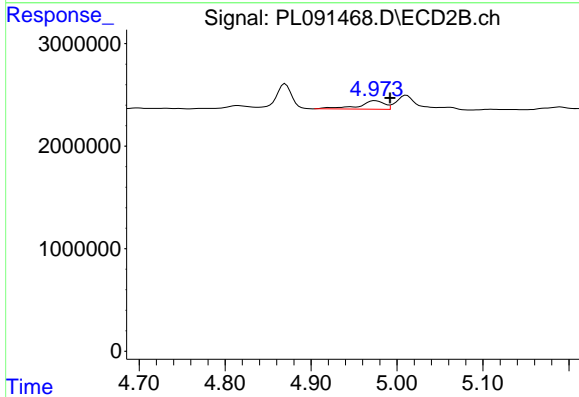
R.T.: 4.334 min
 Delta R.T.: -0.027 min
 Response: 456724
 Conc: 4.86 ng/ml



#25 Chlordane-3

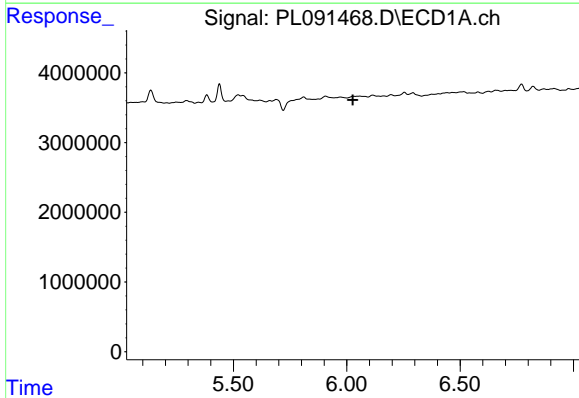
R.T.: 5.972 min
 Delta R.T.: 0.028 min
 Response: 1990707
 Conc: 5.73 ng/ml

Instrument :
 ECD_L
 ClientSampleId :



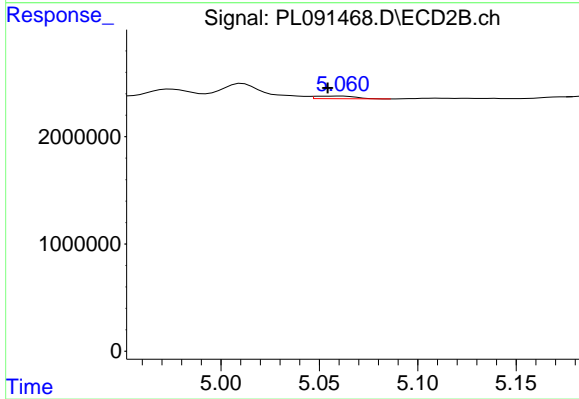
#25 Chlordane-3

R.T.: 4.975 min
 Delta R.T.: -0.017 min
 Response: 1749582
 Conc: 7.20 ng/ml



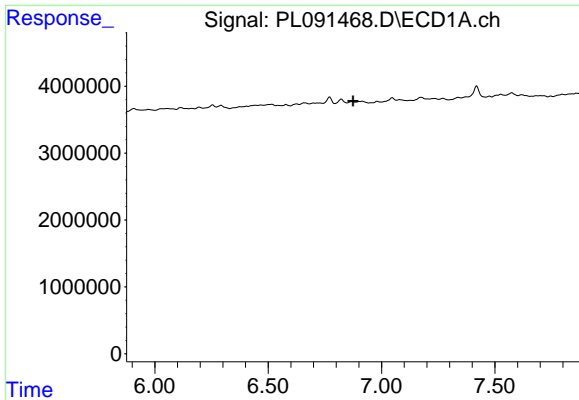
#26 Chlordane-4

R.T.: 0.000 min
 Exp R.T. : 6.026 min
 Response: 0
 Conc: N.D.



#26 Chlordane-4

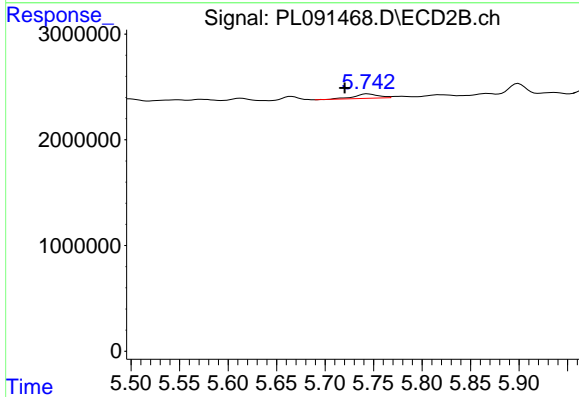
R.T.: 5.060 min
 Delta R.T.: 0.006 min
 Response: 349517
 Conc: 1.50 ng/ml



#27 Chlordane-5

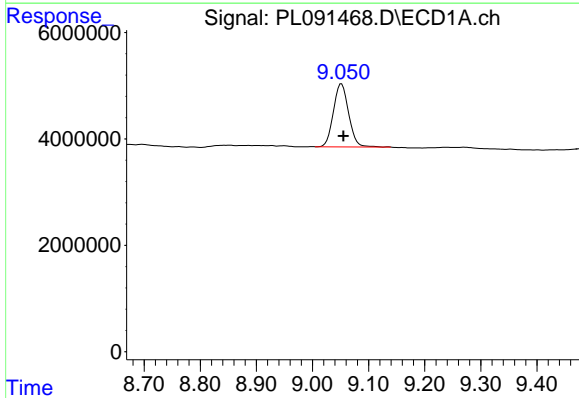
R.T.: 0.000 min
 Exp R.T.: 6.875 min
 Response: 0
 Conc: N.D.

Instrument :
 ECD_L
 ClientSampleId :



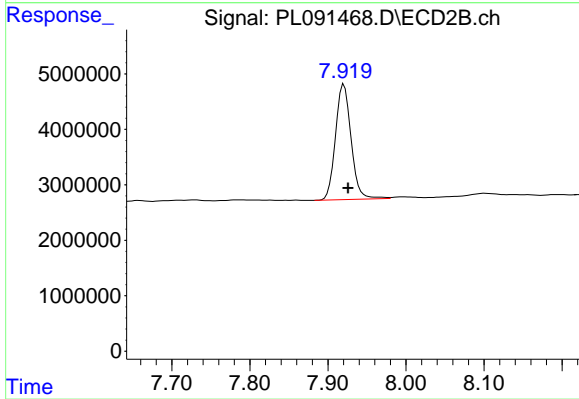
#27 Chlordane-5

R.T.: 5.744 min
 Delta R.T.: 0.024 min
 Response: 705958
 Conc: 10.20 ng/ml



#28 Decachlorobiphenyl

R.T.: 9.052 min
 Delta R.T.: -0.003 min
 Response: 22334527
 Conc: 14.65 ng/ml



#28 Decachlorobiphenyl

R.T.: 7.921 min
 Delta R.T.: -0.005 min
 Response: 28958099
 Conc: 15.29 ng/ml