

Data Path : Z:\pestpcbsrv\HPCHEM1\ECD\_L\Data\PL090222\  
 Data File : PL077478.D  
 Signal(s) : Signal #1: ECD1A.ch Signal #2: ECD2B.ch  
 Acq On : 02 Sep 2022 17:53  
 Operator : AR\AJ  
 Sample : PTOXICC100  
 Misc :  
 ALS Vial : 19 Sample Multiplier: 1

Instrument :  
 ECD\_L  
 ClientSampleId :

Integration File signal 1: autoint1.e  
 Integration File signal 2: autoint2.e  
 Quant Time: Sep 02 18:05:24 2022  
 Quant Method : Z:\pestpcbsrv\HPCHEM1\ECD\_L\methods\LTX090222.M  
 Quant Title : GC Extractables  
 QLast Update : Fri Sep 02 17:54:51 2022  
 Response via : Initial Calibration  
 Integrator: ChemStation

Volume Inj. : 2 µl  
 Signal #1 Phase : Rtx-CLPesticide 1 Signal #2 Phase: Rtx-CLPesticide 1  
 Signal #1 Info : 30M x 0.32mm x0.3 Signal #2 Info : 30M x 0.32mm x 0.25µm

Compound	RT#1	RT#2	Resp#1	Resp#2	ng/ml	ng/ml
-----						
System Monitoring Compounds						
1) SA Tetrachlo...	3.416	2.629	12746050	25945338	9.223	9.085
7) SA Decachlor...	8.903	7.728	12318416	24893403	10.846	10.183
Target Compounds						
2) Toxaphene-1	6.119	5.310	1664270	1751926	124.912	118.061
3) Toxaphene-2	6.942	5.784	4643381	2607098	127.086	120.251
4) Toxaphene-3	7.032	6.181	3508276	2346126	123.517	122.707
5) Toxaphene-4	7.123	6.413	2339876	7007182	124.385	111.217
6) Toxaphene-5	7.460	6.539	2292067	10288878	128.459	113.861
-----						

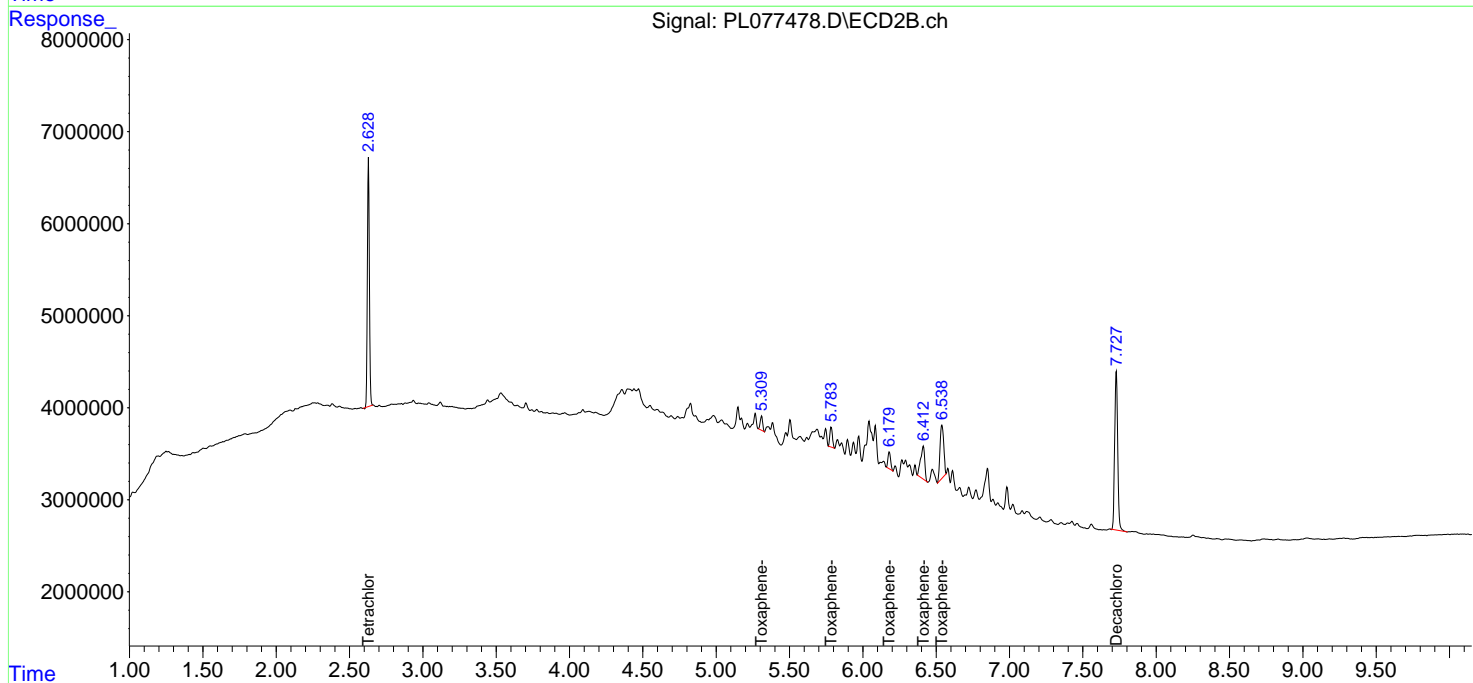
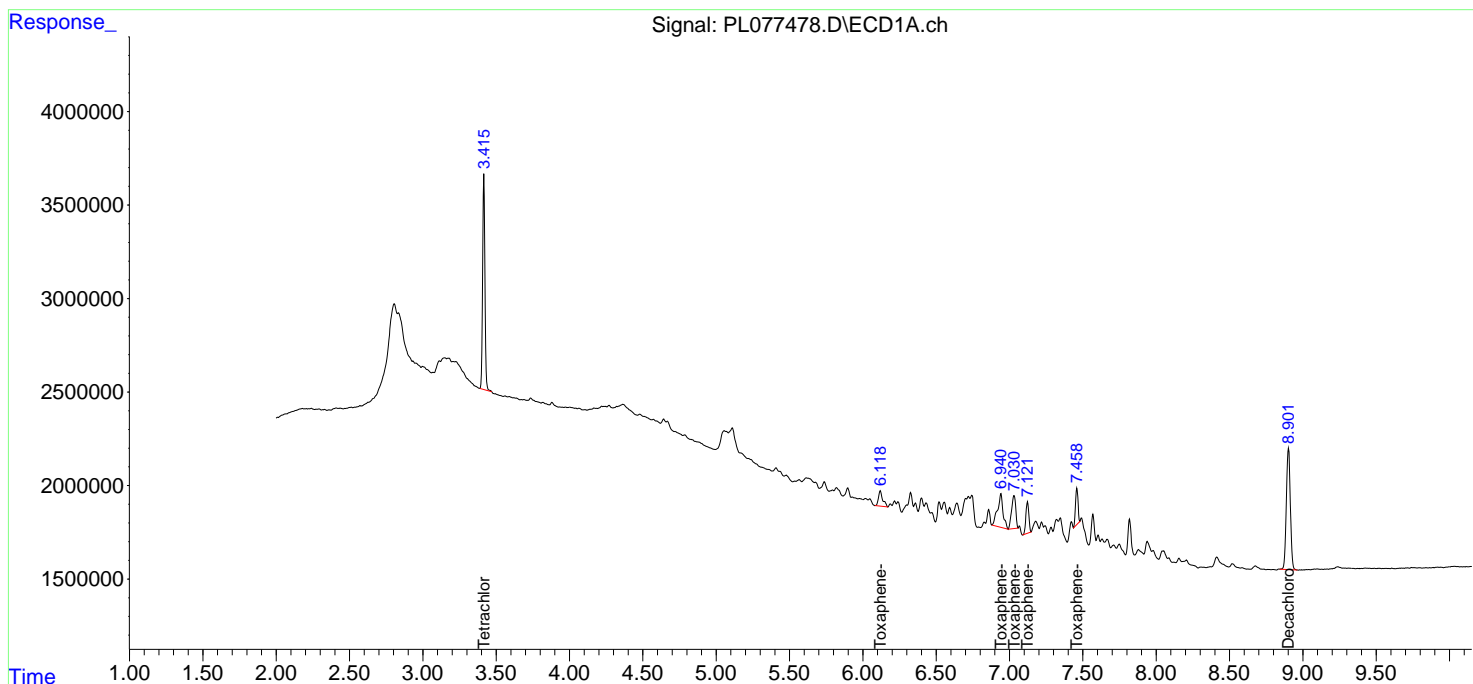
(f)=RT Delta > 1/2 Window (#)=Amounts differ by > 25% (m)=manual int.

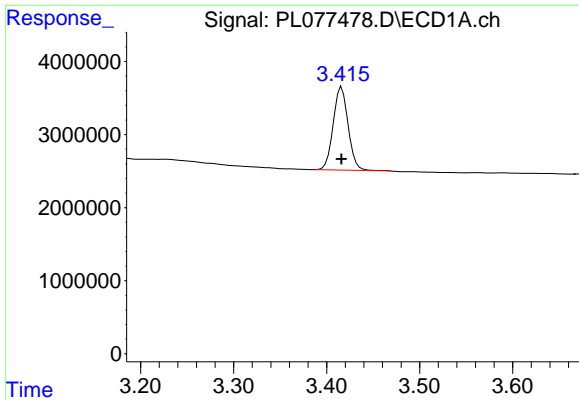
Data Path : Z:\pestpcbsrv\HPCHEM1\ECD\_L\Data\PL090222\  
 Data File : PL077478.D  
 Signal(s) : Signal #1: ECD1A.ch Signal #2: ECD2B.ch  
 Acq On : 02 Sep 2022 17:53  
 Operator : AR\AJ  
 Sample : PTOXICC100  
 Misc :  
 ALS Vial : 19 Sample Multiplier: 1

Instrument :  
 ECD\_L  
 ClientSampleId :

Integration File signal 1: autoint1.e  
 Integration File signal 2: autoint2.e  
 Quant Time: Sep 02 18:05:24 2022  
 Quant Method : Z:\pestpcbsrv\HPCHEM1\ECD\_L\methods\LTX090222.M  
 Quant Title : GC Extractables  
 QLast Update : Fri Sep 02 17:54:51 2022  
 Response via : Initial Calibration  
 Integrator: ChemStation

Volume Inj. : 2 µl  
 Signal #1 Phase : Rtx-CLPesticide 1 Signal #2 Phase: Rtx-CLPesticide 1  
 Signal #1 Info : 30M x 0.32mm x0.3 Signal #2 Info : 30M x 0.32mm x 0.25µm

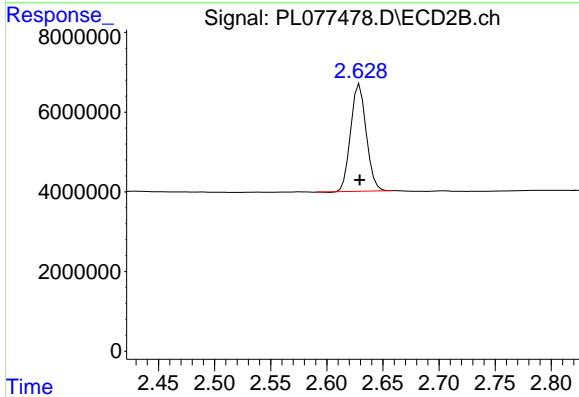




#1 Tetrachloro-m-xylene

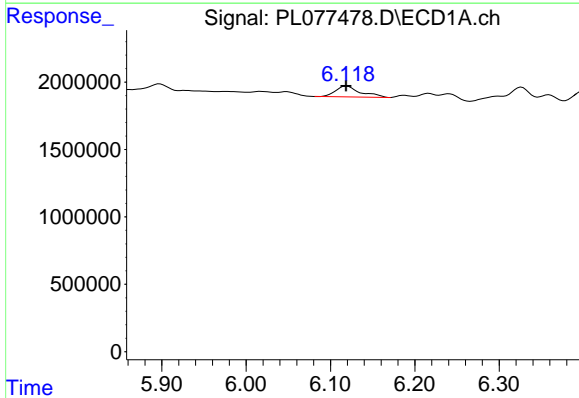
R.T.: 3.416 min  
 Delta R.T.: 0.000 min  
 Response: 12746050  
 Conc: 9.22 ng/ml

Instrument :  
 ECD\_L  
 ClientSampleId :



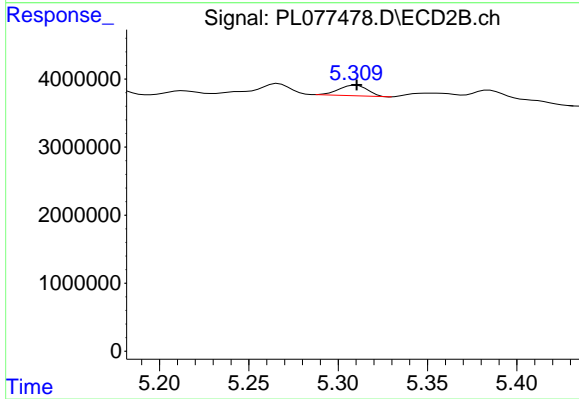
#1 Tetrachloro-m-xylene

R.T.: 2.629 min  
 Delta R.T.: 0.000 min  
 Response: 25945338  
 Conc: 9.09 ng/ml



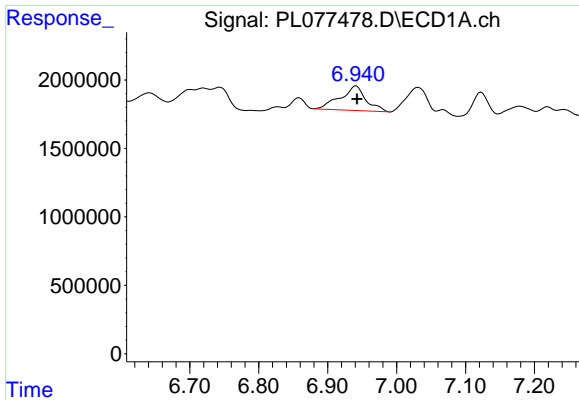
#2 Toxaphene-1

R.T.: 6.119 min  
 Delta R.T.: 0.000 min  
 Response: 1664270  
 Conc: 124.91 ng/ml



#2 Toxaphene-1

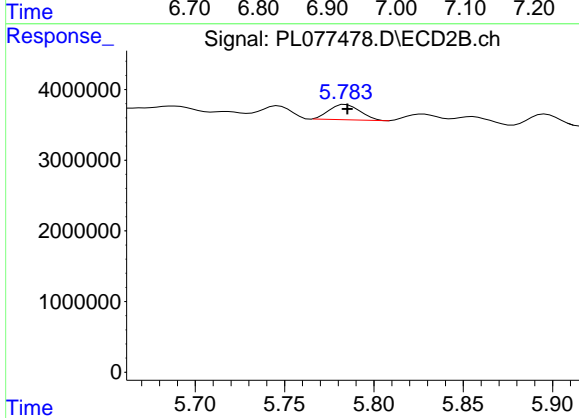
R.T.: 5.310 min  
 Delta R.T.: 0.000 min  
 Response: 1751926  
 Conc: 118.06 ng/ml



#3 Toxaphene-2

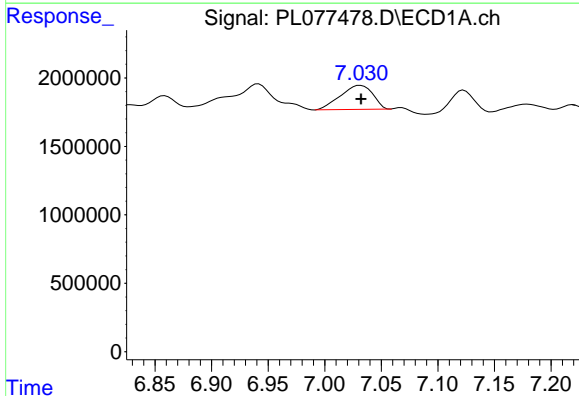
R.T.: 6.942 min  
 Delta R.T.: -0.001 min  
 Response: 4643381  
 Conc: 127.09 ng/ml

Instrument :  
 ECD\_L  
 ClientSampleId :



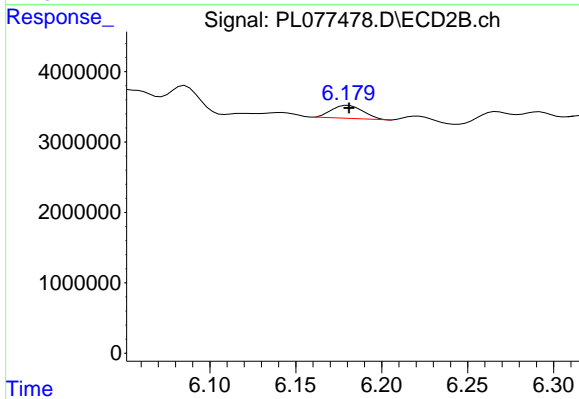
#3 Toxaphene-2

R.T.: 5.784 min  
 Delta R.T.: -0.001 min  
 Response: 2607098  
 Conc: 120.25 ng/ml



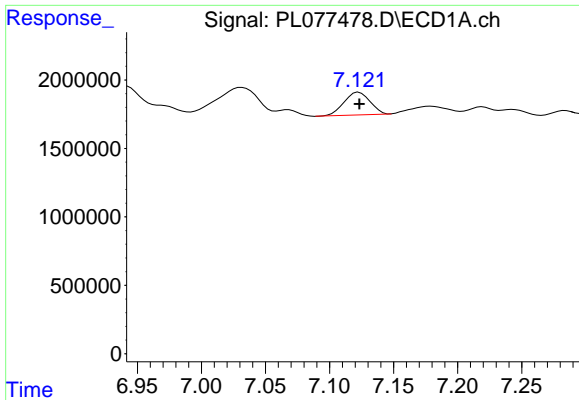
#4 Toxaphene-3

R.T.: 7.032 min  
 Delta R.T.: 0.000 min  
 Response: 3508276  
 Conc: 123.52 ng/ml



#4 Toxaphene-3

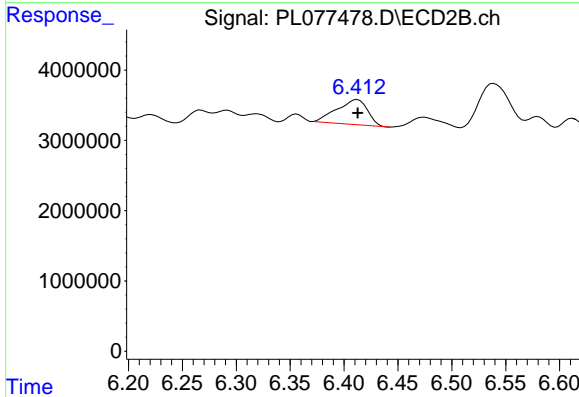
R.T.: 6.181 min  
 Delta R.T.: 0.000 min  
 Response: 2346126  
 Conc: 122.71 ng/ml



#5 Toxaphene-4

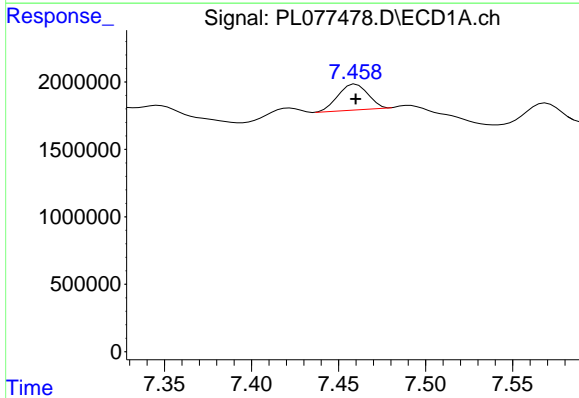
R.T.: 7.123 min  
 Delta R.T.: 0.000 min  
 Response: 2339876  
 Conc: 124.38 ng/ml

Instrument :  
 ECD\_L  
 ClientSampleId :



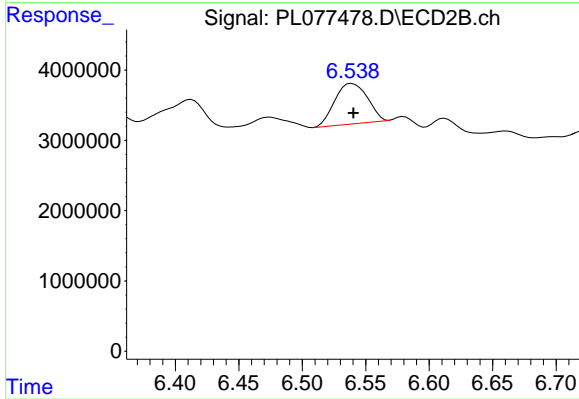
#5 Toxaphene-4

R.T.: 6.413 min  
 Delta R.T.: 0.000 min  
 Response: 7007182  
 Conc: 111.22 ng/ml



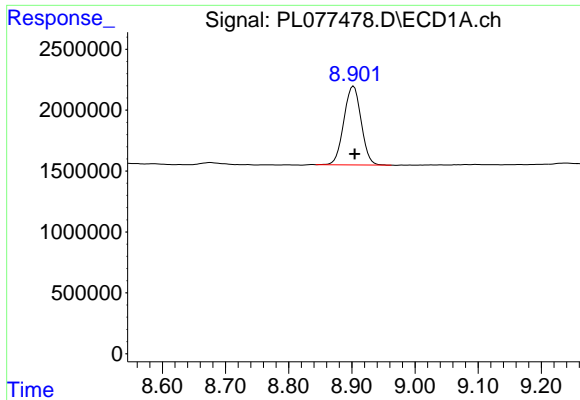
#6 Toxaphene-5

R.T.: 7.460 min  
 Delta R.T.: 0.000 min  
 Response: 2292067  
 Conc: 128.46 ng/ml



#6 Toxaphene-5

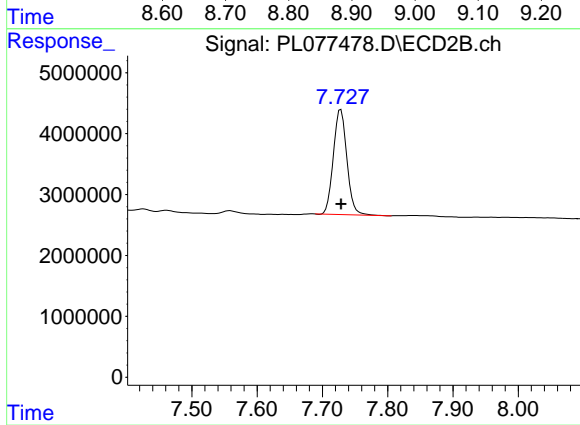
R.T.: 6.539 min  
 Delta R.T.: -0.001 min  
 Response: 10288878  
 Conc: 113.86 ng/ml



#7 Decachlorobiphenyl

R.T.: 8.903 min  
Delta R.T.: -0.002 min  
Response: 12318416  
Conc: 10.85 ng/ml

Instrument :  
ECD\_L  
ClientSampleId :



#7 Decachlorobiphenyl

R.T.: 7.728 min  
Delta R.T.: 0.000 min  
Response: 24893403  
Conc: 10.18 ng/ml