

Data Path : Z:\pestpcbsrv\HPCHEM1\ECD_L\Data\PL090222\
 Data File : PL077502.D
 Signal(s) : Signal #1: ECD1A.ch Signal #2: ECD2B.ch
 Acq On : 03 Sep 2022 00:49
 Operator : AR\AJ
 Sample : PTOXCCC500
 Misc :
 ALS Vial : 17 Sample Multiplier: 1

Instrument :
 ECD_L
 ClientSampleId :

Integration File signal 1: autoint1.e
 Integration File signal 2: autoint2.e
 Quant Time: Sep 05 00:08:03 2022
 Quant Method : Z:\pestpcbsrv\HPCHEM1\ECD_L\methods\LTX090222.M
 Quant Title : GC Extractables
 QLast Update : Fri Sep 02 18:07:00 2022
 Response via : Initial Calibration
 Integrator: ChemStation

Volume Inj. : 2 µl
 Signal #1 Phase : Rtx-CLPesticide 1 Signal #2 Phase: Rtx-CLPesticide 1
 Signal #1 Info : 30M x 0.32mm x0.3 Signal #2 Info : 30M x 0.32mm x 0.25µm

Compound	RT#1	RT#2	Resp#1	Resp#2	ng/ml	ng/ml

System Monitoring Compounds						
1) SA Tetrachlo...	3.417	2.630	86257701	150.6E6	65.689	56.604
7) SA Decachlor...	8.901	7.728	61792717	104.5E6	55.497	44.416
Target Compounds						
2) Toxaphene-1	6.118	5.310	4468048	9388939	334.170	635.611 #
3) Toxaphene-2	6.942	5.785	15536462	10433594	414.718	475.554
4) Toxaphene-3	7.032	6.180	12028479	7750286	418.794	400.060
5) Toxaphene-4	7.123	6.411	8242440	17335068	429.886	277.993 #
6) Toxaphene-5	7.462	6.540	8055221	29657124	432.497	332.184

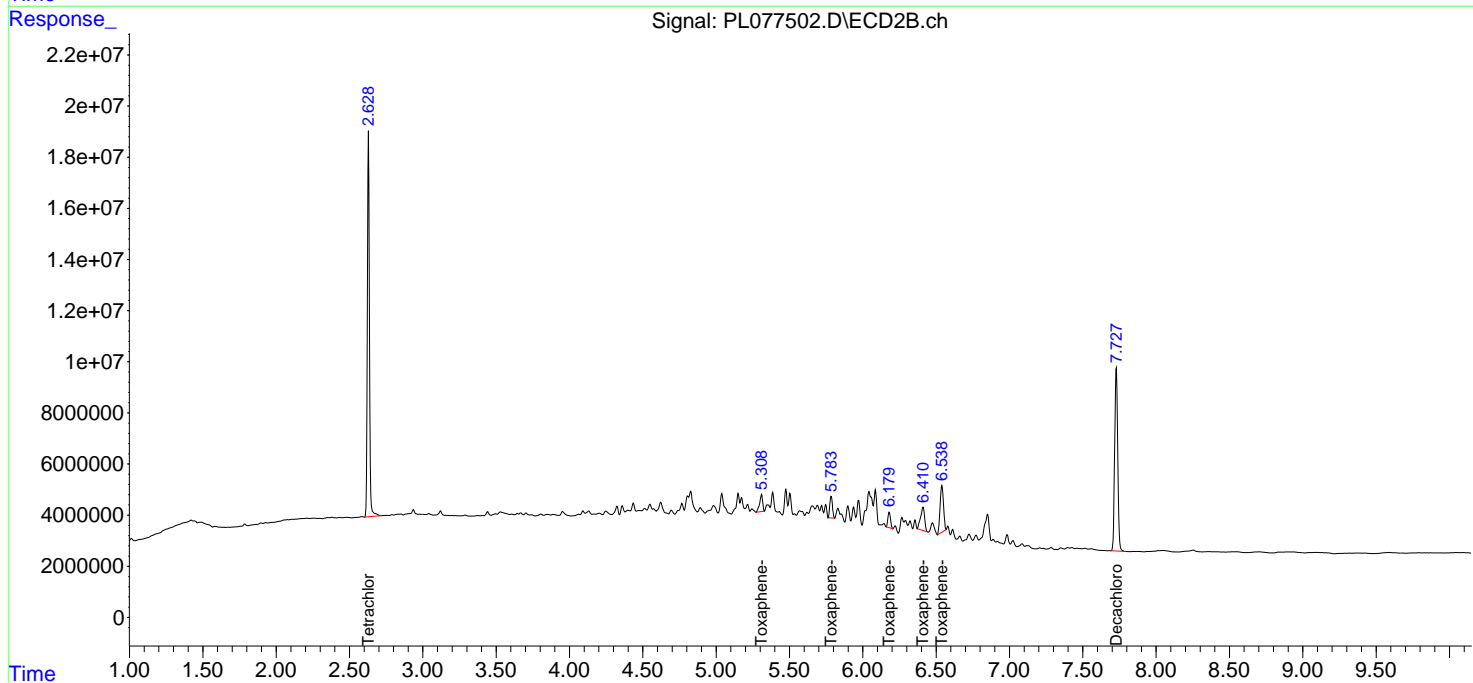
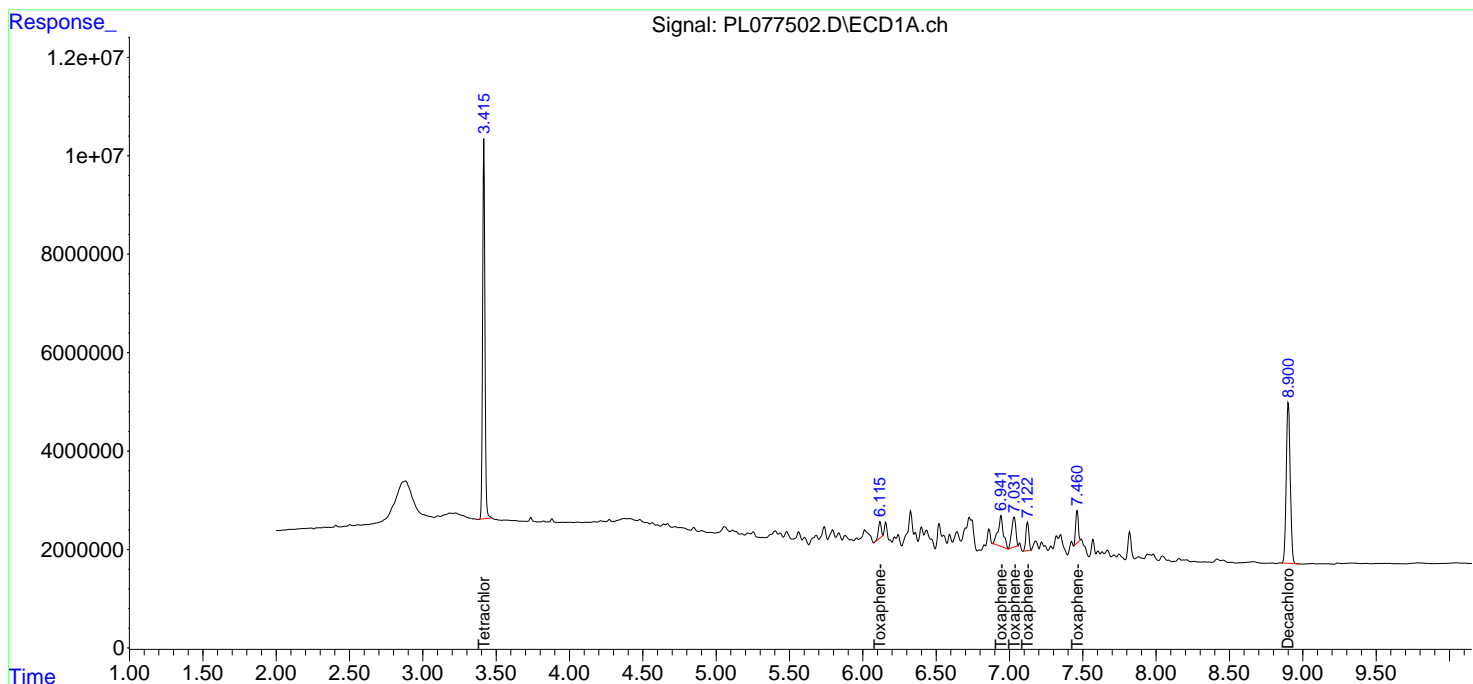
(f)=RT Delta > 1/2 Window (#)=Amounts differ by > 25% (m)=manual int.

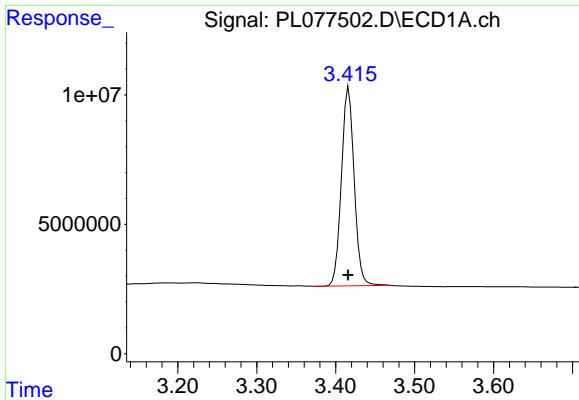
Data Path : Z:\pestpcbsrv\HPCHEM1\ECD_L\Data\PL090222\
 Data File : PL077502.D
 Signal(s) : Signal #1: ECD1A.ch Signal #2: ECD2B.ch
 Acq On : 03 Sep 2022 00:49
 Operator : AR\AJ
 Sample : PTOXCCC500
 Misc :
 ALS Vial : 17 Sample Multiplier: 1

Instrument :
 ECD_L
 ClientSampleId :

Integration File signal 1: autoint1.e
 Integration File signal 2: autoint2.e
 Quant Time: Sep 05 00:08:03 2022
 Quant Method : Z:\pestpcbsrv\HPCHEM1\ECD_L\methods\LTX090222.M
 Quant Title : GC Extractables
 QLast Update : Fri Sep 02 18:07:00 2022
 Response via : Initial Calibration
 Integrator: ChemStation

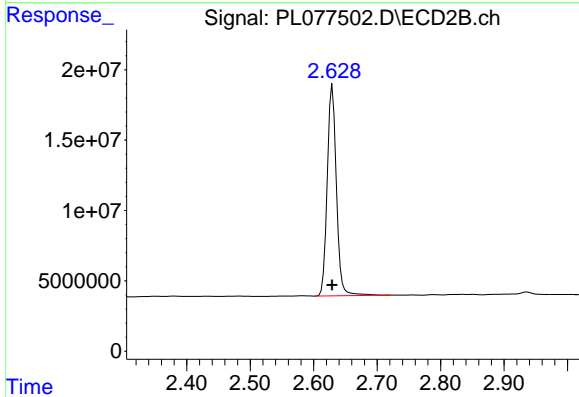
Volume Inj. : 2 µl
 Signal #1 Phase : Rtx-CLPesticide 1 Signal #2 Phase: Rtx-CLPesticide 1
 Signal #1 Info : 30M x 0.32mm x0.3 Signal #2 Info : 30M x 0.32mm x 0.25µm



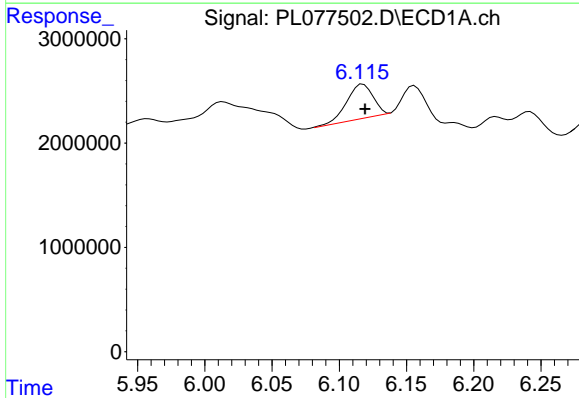


#1 Tetrachloro-m-xylene
 R.T.: 3.417 min
 Delta R.T.: 0.000 min
 Response: 86257701
 Conc: 65.69 ng/ml

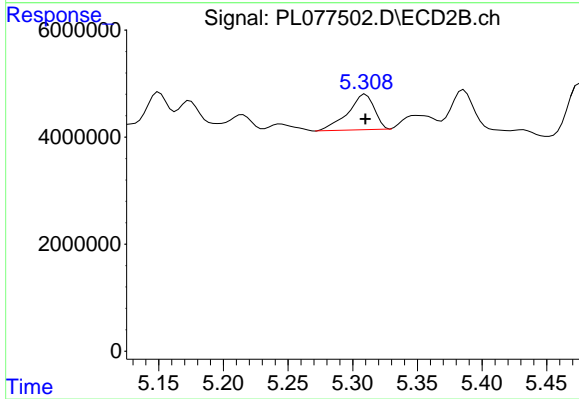
Instrument :
 ECD_L
 ClientSampleId :



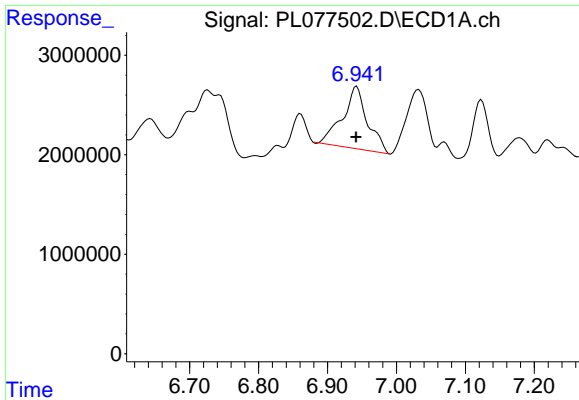
#1 Tetrachloro-m-xylene
 R.T.: 2.630 min
 Delta R.T.: 0.000 min
 Response: 150569116
 Conc: 56.60 ng/ml



#2 Toxaphene-1
 R.T.: 6.118 min
 Delta R.T.: -0.001 min
 Response: 4468048
 Conc: 334.17 ng/ml



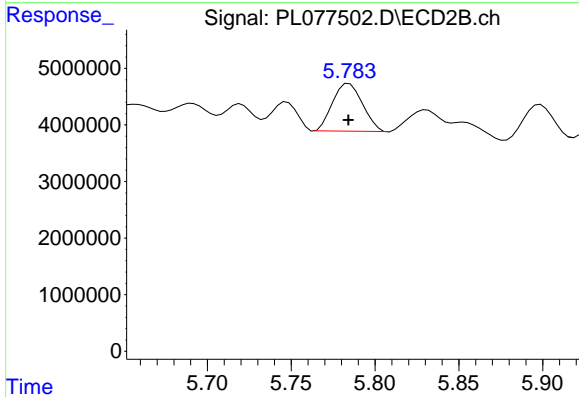
#2 Toxaphene-1
 R.T.: 5.310 min
 Delta R.T.: 0.000 min
 Response: 9388939
 Conc: 635.61 ng/ml



#3 Toxaphene-2

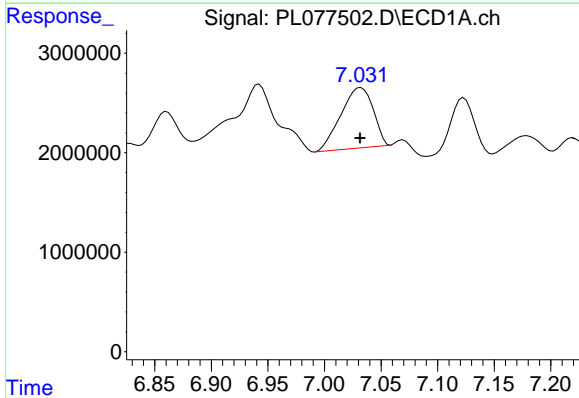
R.T.: 6.942 min
 Delta R.T.: 0.000 min
 Response: 15536462
 Conc: 414.72 ng/ml

Instrument :
 ECD_L
 ClientSampleId :



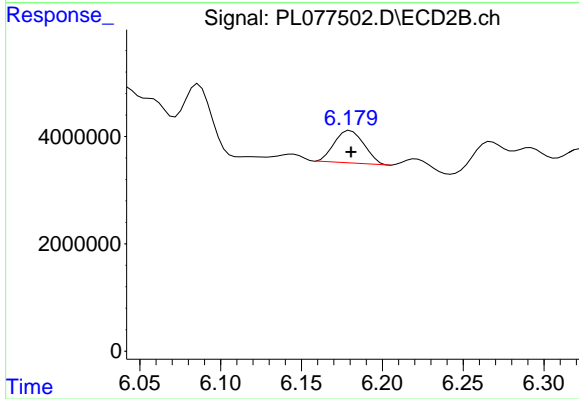
#3 Toxaphene-2

R.T.: 5.785 min
 Delta R.T.: 0.000 min
 Response: 10433594
 Conc: 475.55 ng/ml



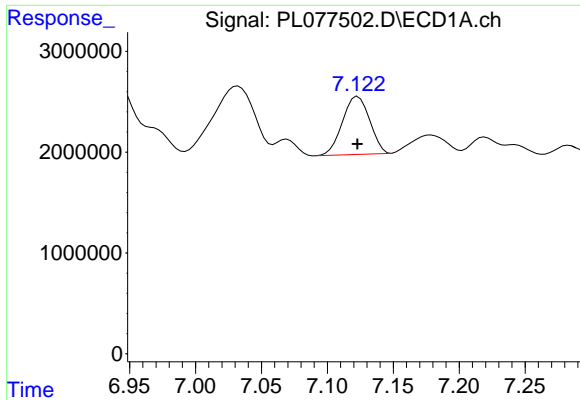
#4 Toxaphene-3

R.T.: 7.032 min
 Delta R.T.: 0.000 min
 Response: 12028479
 Conc: 418.79 ng/ml



#4 Toxaphene-3

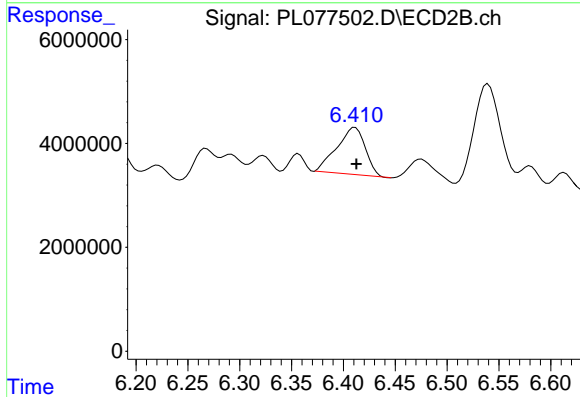
R.T.: 6.180 min
 Delta R.T.: 0.000 min
 Response: 7750286
 Conc: 400.06 ng/ml



#5 Toxaphene-4

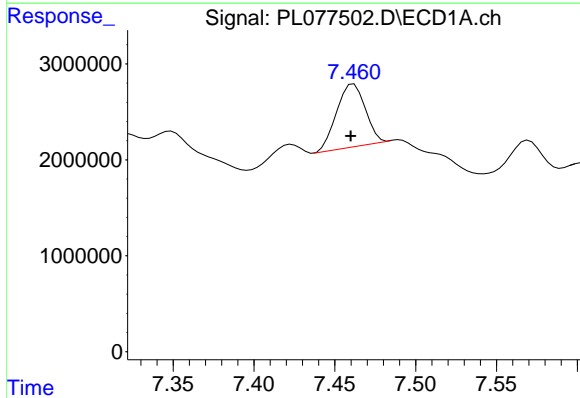
R.T.: 7.123 min
 Delta R.T.: 0.000 min
 Response: 8242440
 Conc: 429.89 ng/ml

Instrument :
 ECD_L
 ClientSampleId :



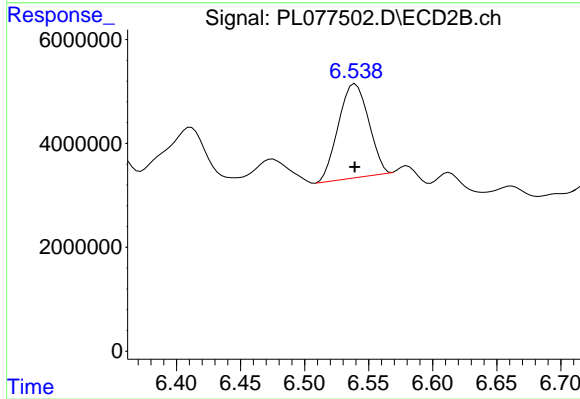
#5 Toxaphene-4

R.T.: 6.411 min
 Delta R.T.: -0.001 min
 Response: 17335068
 Conc: 277.99 ng/ml



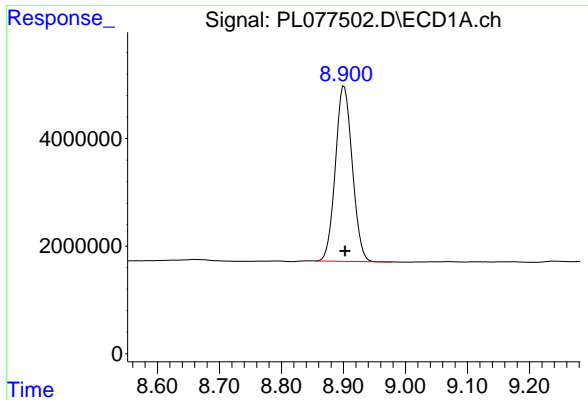
#6 Toxaphene-5

R.T.: 7.462 min
 Delta R.T.: 0.002 min
 Response: 8055221
 Conc: 432.50 ng/ml



#6 Toxaphene-5

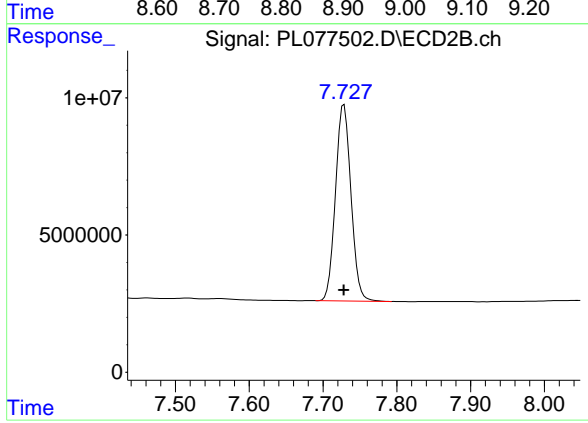
R.T.: 6.540 min
 Delta R.T.: 0.000 min
 Response: 29657124
 Conc: 332.18 ng/ml



#7 Decachlorobiphenyl

R.T.: 8.901 min
Delta R.T.: -0.002 min
Response: 61792717
Conc: 55.50 ng/ml

Instrument :
ECD_L
ClientSampleId :



#7 Decachlorobiphenyl

R.T.: 7.728 min
Delta R.T.: 0.000 min
Response: 104482614
Conc: 44.42 ng/ml