

Data Path : Z:\pestpcbsrv\HPCHEM1\ECD_L\Data\PL090320\
 Data File : PL061215.D
 Signal(s) : Signal #1: ECD1A.ch Signal #2: ECD2B.ch
 Acq On : 03 Sep 2020 12:42
 Operator : DD\AJ
 Sample : PB131394BS
 Misc :
 ALS Vial : 6 Sample Multiplier: 1

Instrument :
 ECD_L
 ClientSampleId :
 PB131394BS

Integration File signal 1: autoint1.e
 Integration File signal 2: autoint2.e
 Quant Time: Sep 03 16:24:35 2020
 Quant Method : Z:\pestpcbsrv\HPCHEM1\ECD_L\methods\PL082520.M
 Quant Title : GC Extractables
 QLast Update : Tue Aug 25 16:59:57 2020
 Response via : Initial Calibration
 Integrator: ChemStation

Volume Inj. : 1 µl
 Signal #1 Phase : ZB-MR2 Signal #2 Phase: ZB-MR1
 Signal #1 Info : 30M x 0.32mm x0.2 Signal #2 Info : 30M x 0.32mm x0.5µm

Compound	RT#1	RT#2	Resp#1	Resp#2	ng/ml	ng/ml

System Monitoring Compounds						
1) SA Tetrachlo...	3.461	4.008	34045850	46745390	18.449	17.986
28) SA Decachlor...	8.214	9.099	34171618	42842096	20.285	20.304
Target Compounds						
2) A alpha-BHC	3.897	4.398	128.4E6	182.8E6	45.389	44.990
3) MA gamma-BHC...	4.181	4.683	114.6E6	168.3E6	44.904	44.755
4) MA Heptachlor	4.482	5.194	106.4E6	167.0E6	45.333	45.639
5) MB Aldrin	4.730	5.501	95140559	153.6E6	45.596	45.567
6) B beta-BHC	4.431	4.854	47575223	70812519	46.574	47.548
7) B delta-BHC	4.635	5.072	103.4E6	136.9E6	43.499	49.850
8) B Heptachlo...	5.173	5.889	91180389	136.2E6	46.248	52.072
9) A Endosulfan I	5.512	6.246	84528380	131.2E6	46.517	45.631
10) B gamma-Chl...	5.400	6.123	90318169	142.5E6	45.965	45.877
11) B alpha-Chl...	5.459	6.196	89754094	142.5E6	45.988	45.832
12) B 4,4'-DDE	5.624	6.354	83410821	131.3E6	45.331	45.424
13) MA Dieldrin	5.755	6.504	88450676	135.7E6	45.961	45.428
14) MA Endrin	6.011	6.723	76243415	109.3E6	41.924	43.051
15) B Endosulfa...	6.285	6.932	80479700	116.7E6	45.087	45.356
16) A 4,4'-DDD	6.139	6.846	73886010	110.5E6	46.738	47.317
17) MA 4,4'-DDT	6.380	7.146	64101698	94848070	42.407	41.185
18) B Endrin al...	6.453	7.057	70081555	100.6E6	46.282	46.111
19) B Endosulfa...	6.665	7.281	79558171	112.8E6	46.457	46.535
20) A Methoxychlor	6.926	7.606	38670371	55571448	43.078	42.984
21) B Endrin ke...	7.155	7.753	92890992	120.4E6	48.122	48.393
22) Mirex	7.344	8.210	66934316	84690572	46.996	48.672

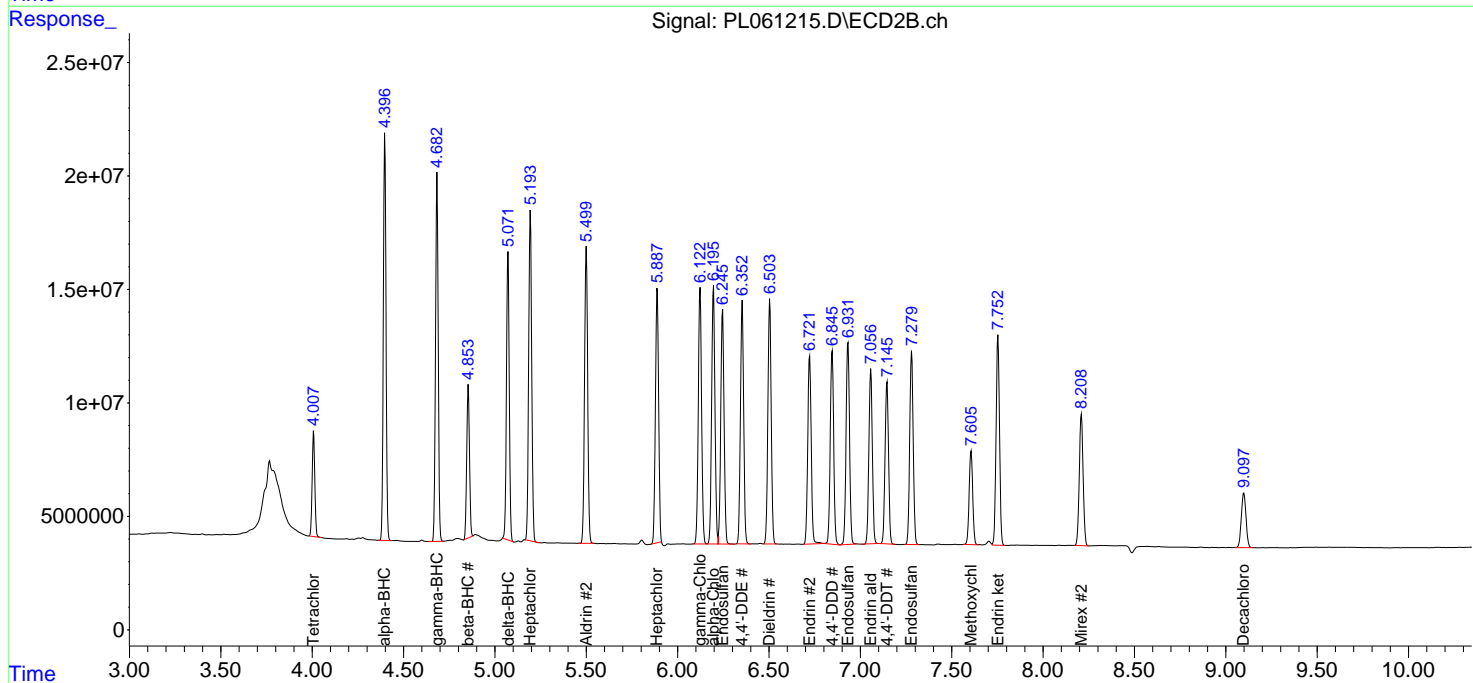
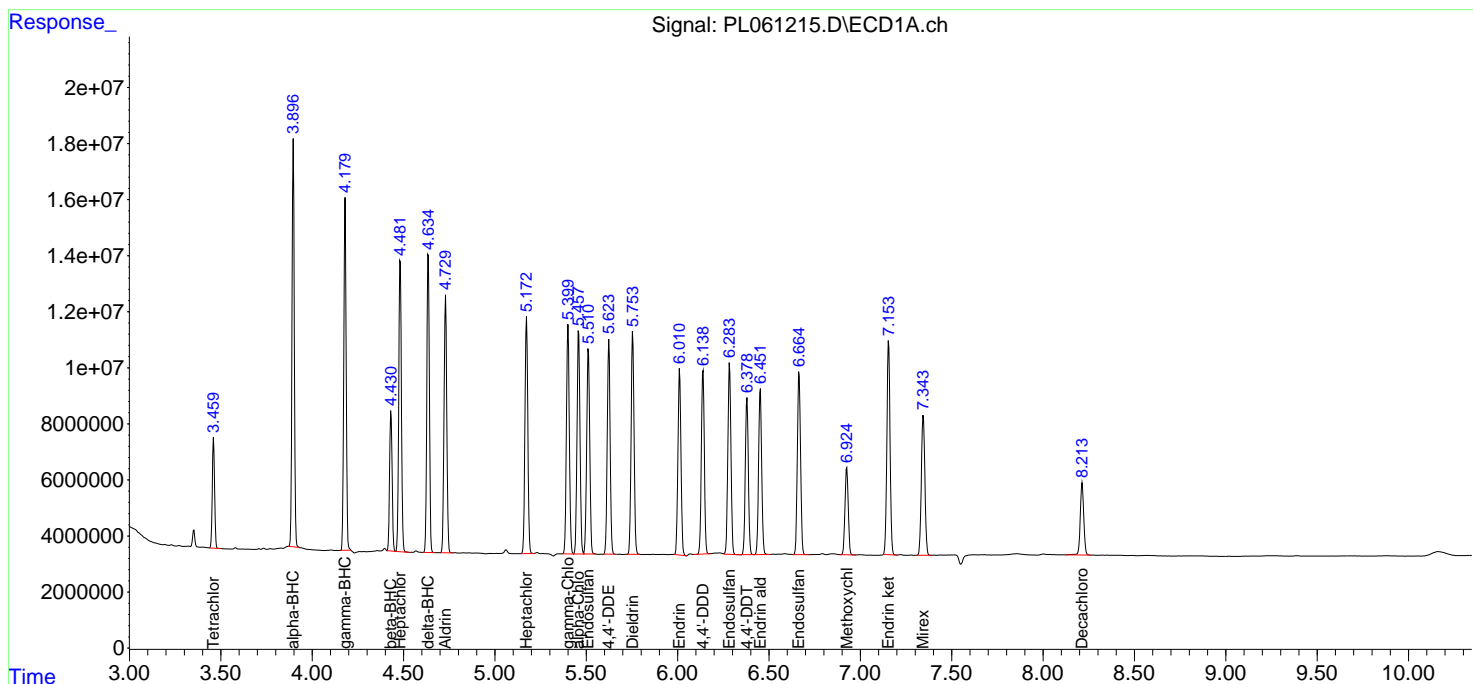
(f)=RT Delta > 1/2 Window (#)=Amounts differ by > 25% (m)=manual int.

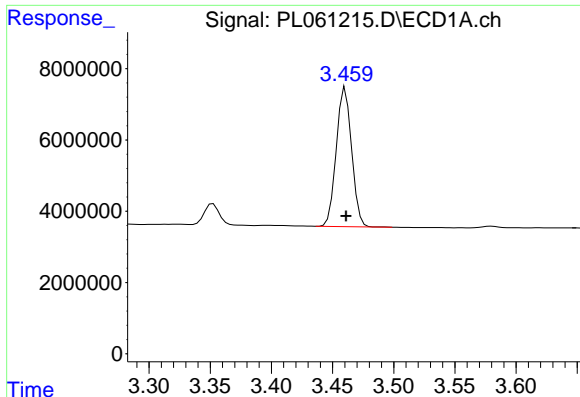
Data Path : Z:\pestpcbsrv\HPCHEM1\ECD_L\Data\PL090320\
 Data File : PL061215.D
 Signal(s) : Signal #1: ECD1A.ch Signal #2: ECD2B.ch
 Acq On : 03 Sep 2020 12:42
 Operator : DD\AJ
 Sample : PB131394BS
 Misc :
 ALS Vial : 6 Sample Multiplier: 1

Instrument :
 ECD_L
 ClientSampled :
 PB131394BS

Integration File signal 1: autoint1.e
 Integration File signal 2: autoint2.e
 Quant Time: Sep 03 16:24:35 2020
 Quant Method : Z:\pestpcbsrv\HPCHEM1\ECD_L\methods\PL082520.M
 Quant Title : GC Extractables
 QLast Update : Tue Aug 25 16:59:57 2020
 Response via : Initial Calibration
 Integrator: ChemStation

Volume Inj. : 1 µl
 Signal #1 Phase : ZB-MR2 Signal #2 Phase: ZB-MR1
 Signal #1 Info : 30M x 0.32mm x0.2 Signal #2 Info : 30M x 0.32mm x0.5µm

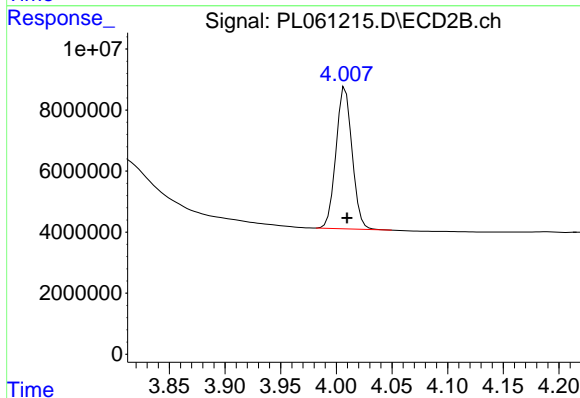




#1 Tetrachloro-m-xylene

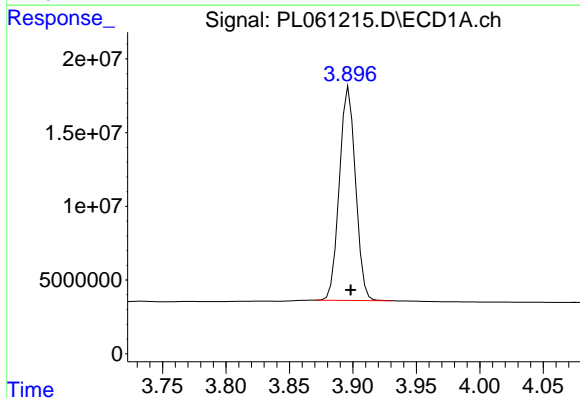
R.T.: 3.461 min
 Delta R.T.: 0.000 min
 Response: 34045850
 Conc: 18.45 ng/ml

Instrument :
 ECD_L
 ClientSampleId :
 PB131394BS



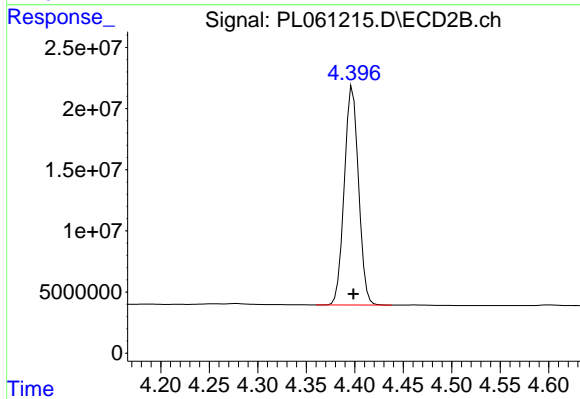
#1 Tetrachloro-m-xylene

R.T.: 4.008 min
 Delta R.T.: -0.002 min
 Response: 46745390
 Conc: 17.99 ng/ml



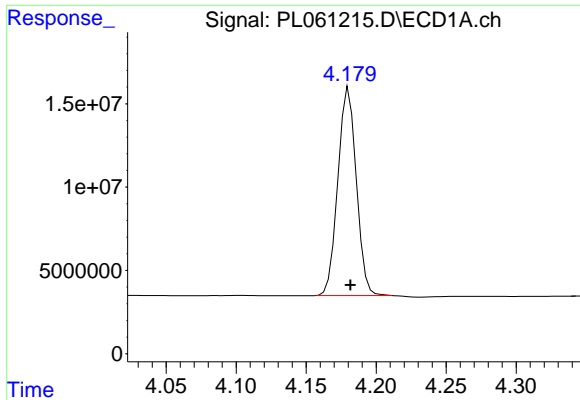
#2 alpha-BHC

R.T.: 3.897 min
 Delta R.T.: -0.001 min
 Response: 128352620
 Conc: 45.39 ng/ml



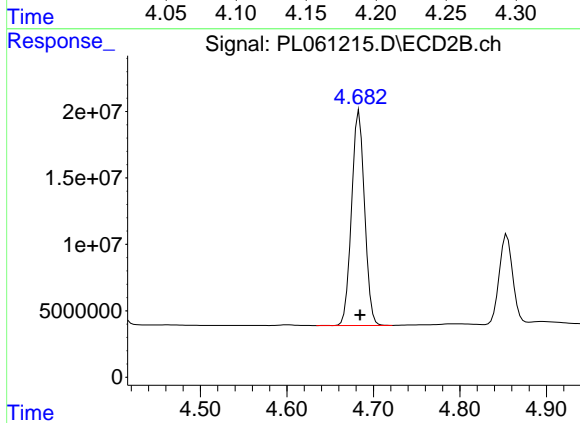
#2 alpha-BHC

R.T.: 4.398 min
 Delta R.T.: -0.001 min
 Response: 182763374
 Conc: 44.99 ng/ml

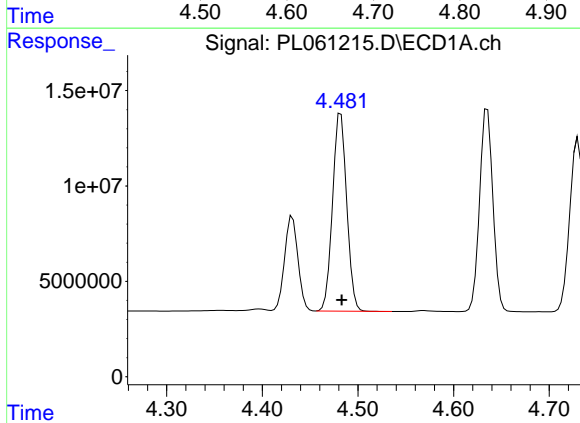


#3 gamma-BHC (Lindane)
 R.T.: 4.181 min
 Delta R.T.: -0.001 min
 Response: 114636850
 Conc: 44.90 ng/ml

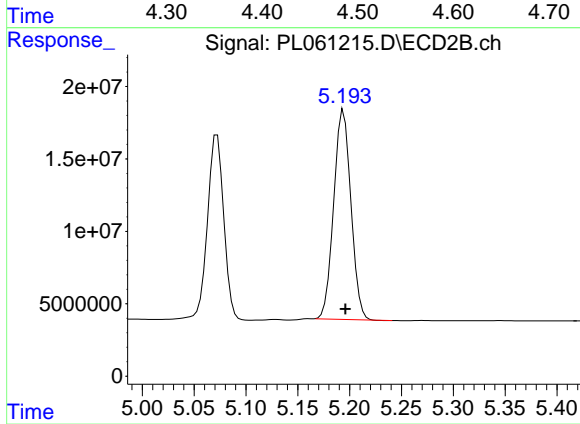
Instrument :
 ECD_L
 ClientSampleId :
 PB131394BS



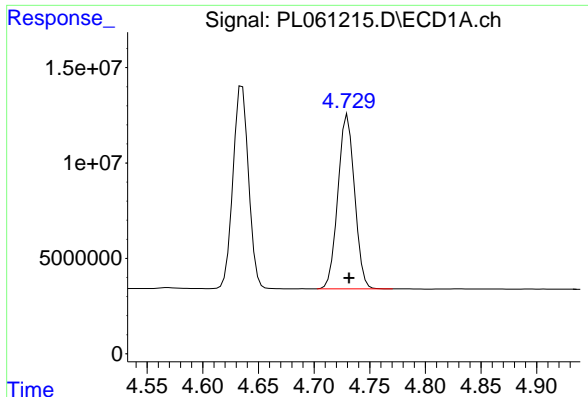
#3 gamma-BHC (Lindane)
 R.T.: 4.683 min
 Delta R.T.: -0.001 min
 Response: 168339716
 Conc: 44.75 ng/ml



#4 Heptachlor
 R.T.: 4.482 min
 Delta R.T.: -0.001 min
 Response: 106392181
 Conc: 45.33 ng/ml

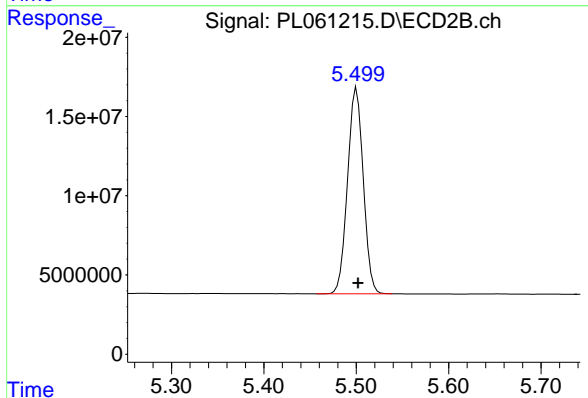


#4 Heptachlor
 R.T.: 5.194 min
 Delta R.T.: -0.002 min
 Response: 166998348
 Conc: 45.64 ng/ml

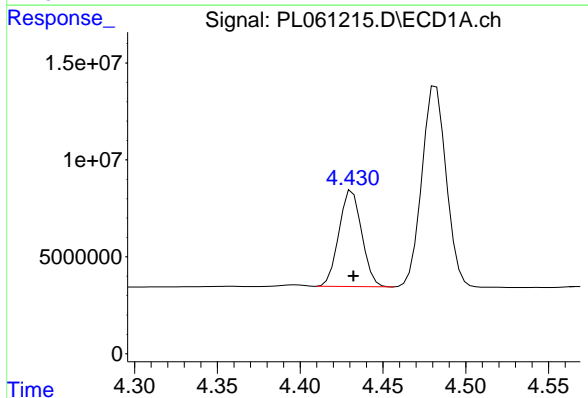


#5 Aldrin
 R.T.: 4.730 min
 Delta R.T.: -0.001 min
 Response: 95140559
 Conc: 45.60 ng/ml

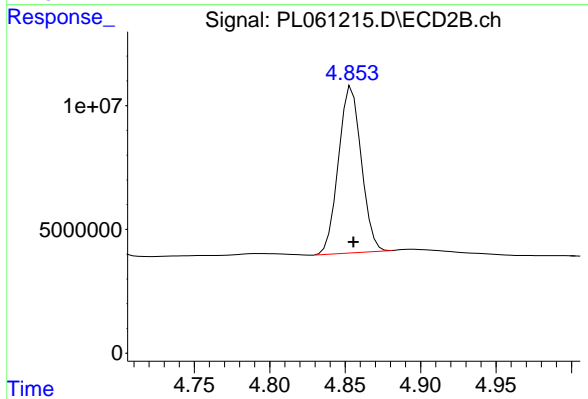
Instrument :
 ECD_L
 ClientSampled :
 PB131394BS



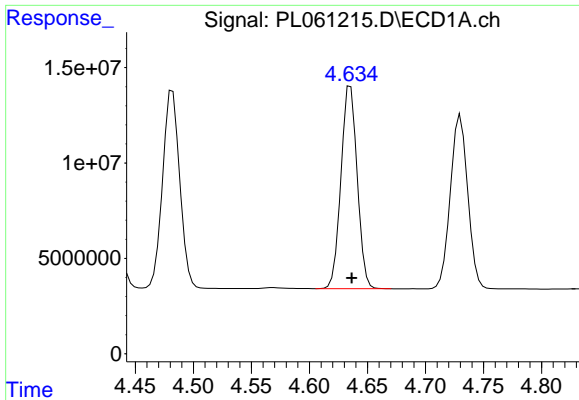
#5 Aldrin
 R.T.: 5.501 min
 Delta R.T.: -0.001 min
 Response: 153575570
 Conc: 45.57 ng/ml



#6 beta-BHC
 R.T.: 4.431 min
 Delta R.T.: 0.000 min
 Response: 47575223
 Conc: 46.57 ng/ml



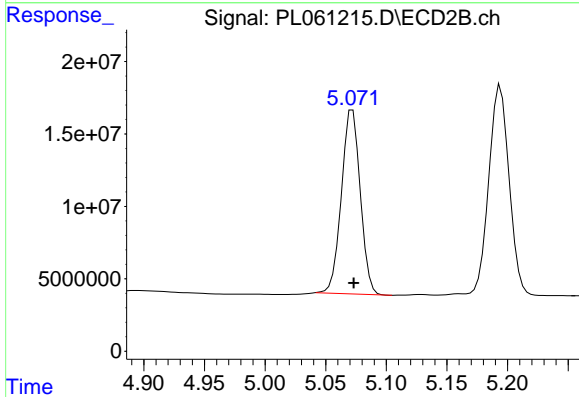
#6 beta-BHC
 R.T.: 4.854 min
 Delta R.T.: -0.001 min
 Response: 70812519
 Conc: 47.55 ng/ml



#7 delta-BHC

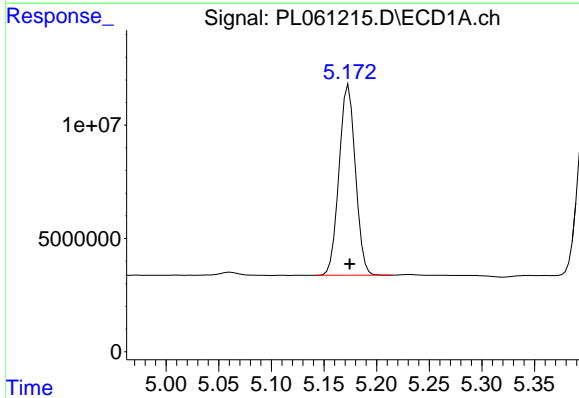
R.T.: 4.635 min
 Delta R.T.: 0.000 min
 Response: 103361449
 Conc: 43.50 ng/ml

Instrument :
 ECD_L
 ClientSampled :
 PB131394BS



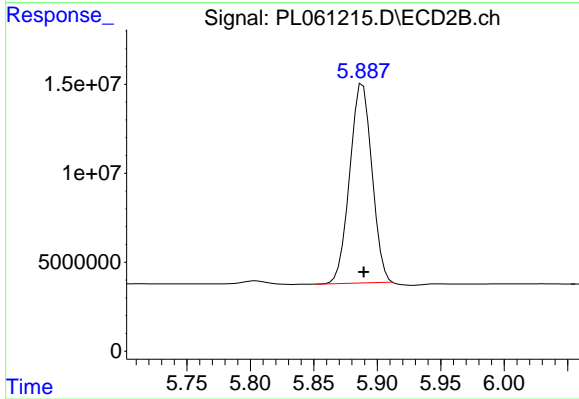
#7 delta-BHC

R.T.: 5.072 min
 Delta R.T.: 0.000 min
 Response: 136929058
 Conc: 49.85 ng/ml



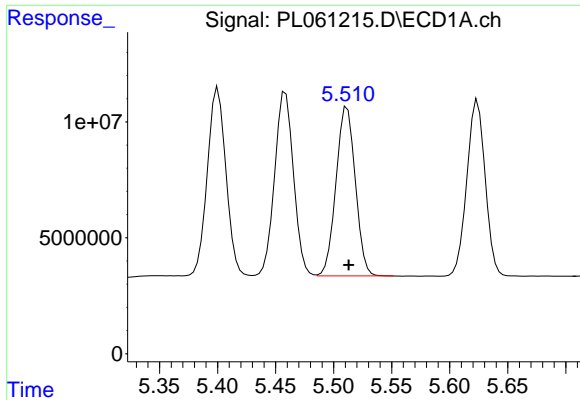
#8 Heptachlor epoxide

R.T.: 5.173 min
 Delta R.T.: -0.001 min
 Response: 91180389
 Conc: 46.25 ng/ml



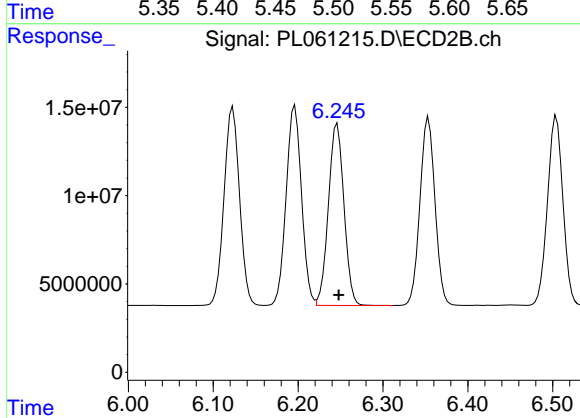
#8 Heptachlor epoxide

R.T.: 5.889 min
 Delta R.T.: 0.000 min
 Response: 136204354
 Conc: 52.07 ng/ml

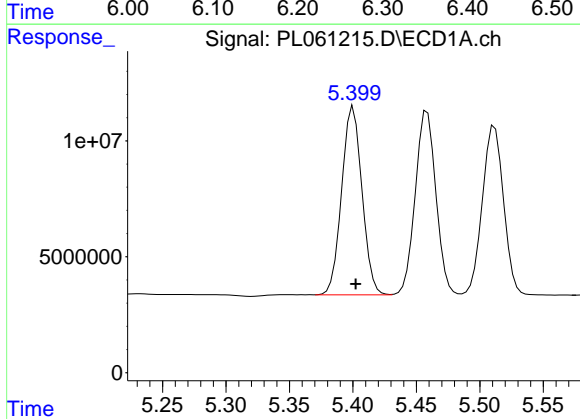


#9 Endosulfan I
 R.T.: 5.512 min
 Delta R.T.: -0.001 min
 Response: 84528380
 Conc: 46.52 ng/ml

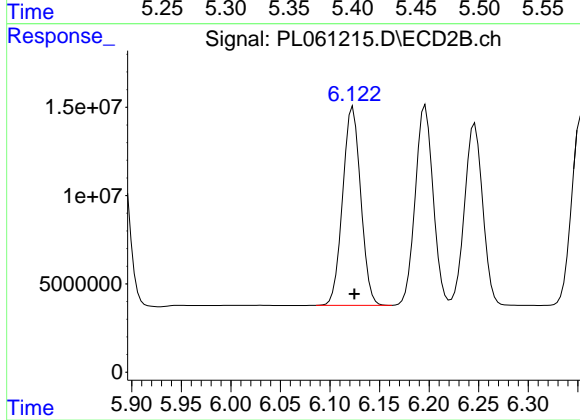
Instrument :
 ECD_L
 ClientSampleId :
 PB131394BS



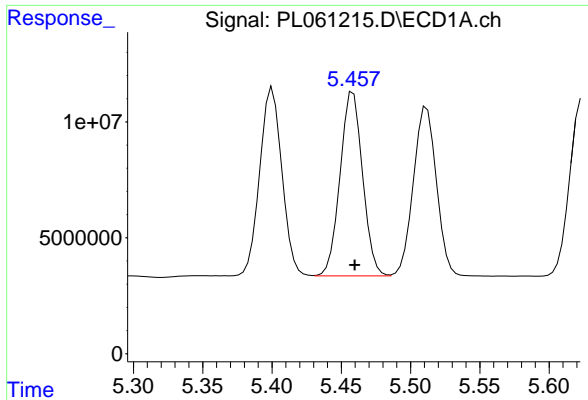
#9 Endosulfan I
 R.T.: 6.246 min
 Delta R.T.: -0.002 min
 Response: 131193090
 Conc: 45.63 ng/ml



#10 gamma-Chlordane
 R.T.: 5.400 min
 Delta R.T.: -0.002 min
 Response: 90318169
 Conc: 45.97 ng/ml

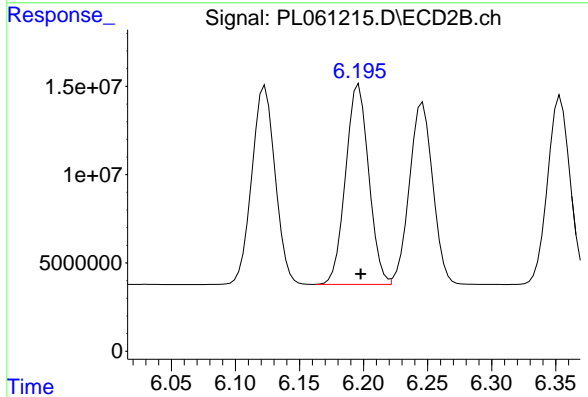


#10 gamma-Chlordane
 R.T.: 6.123 min
 Delta R.T.: -0.002 min
 Response: 142493251
 Conc: 45.88 ng/ml

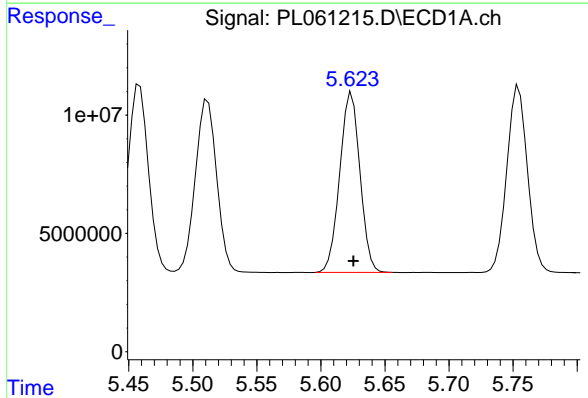


#11 alpha-Chlordane
 R.T.: 5.459 min
 Delta R.T.: -0.001 min
 Response: 89754094
 Conc: 45.99 ng/ml

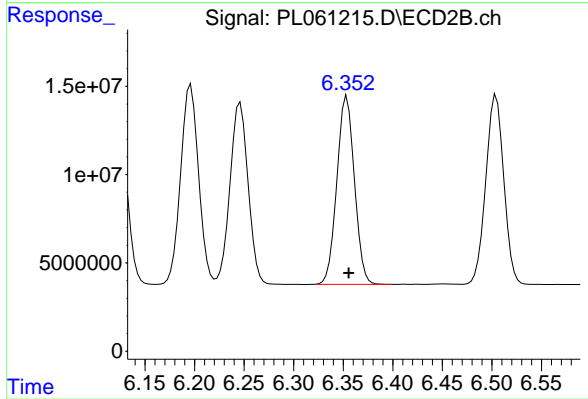
Instrument :
 ECD_L
 ClientSampled :
 PB131394BS



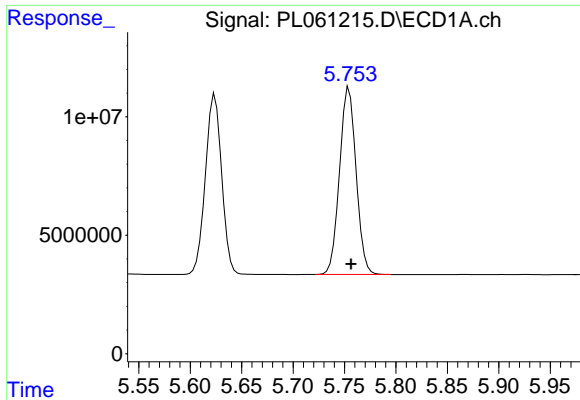
#11 alpha-Chlordane
 R.T.: 6.196 min
 Delta R.T.: -0.001 min
 Response: 142489421
 Conc: 45.83 ng/ml



#12 4,4'-DDE
 R.T.: 5.624 min
 Delta R.T.: -0.001 min
 Response: 83410821
 Conc: 45.33 ng/ml

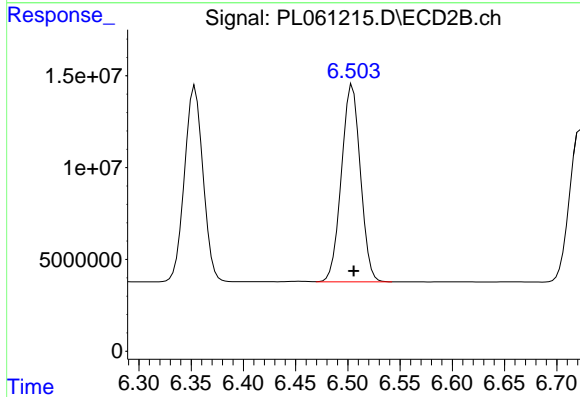


#12 4,4'-DDE
 R.T.: 6.354 min
 Delta R.T.: -0.002 min
 Response: 131286089
 Conc: 45.42 ng/ml

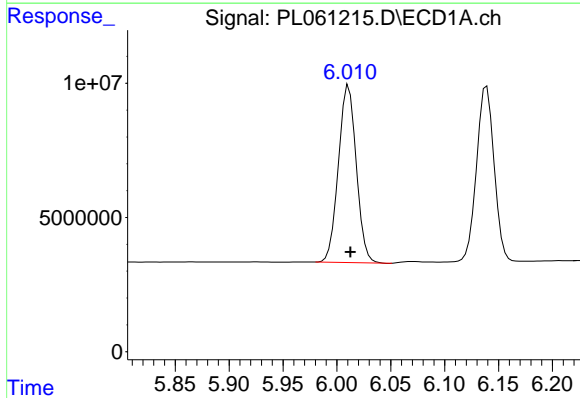


#13 Dieldrin
 R.T.: 5.755 min
 Delta R.T.: -0.002 min
 Response: 88450676
 Conc: 45.96 ng/ml

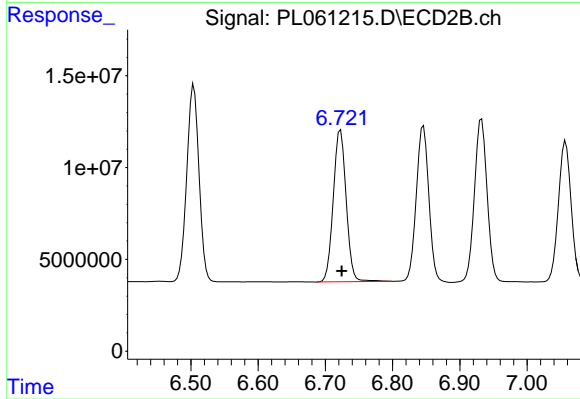
Instrument :
 ECD_L
 ClientSampleId :
 PB131394BS



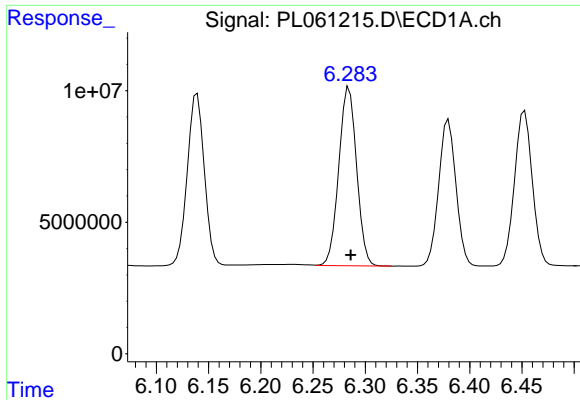
#13 Dieldrin
 R.T.: 6.504 min
 Delta R.T.: -0.001 min
 Response: 135663866
 Conc: 45.43 ng/ml



#14 Endrin
 R.T.: 6.011 min
 Delta R.T.: -0.002 min
 Response: 76243415
 Conc: 41.92 ng/ml

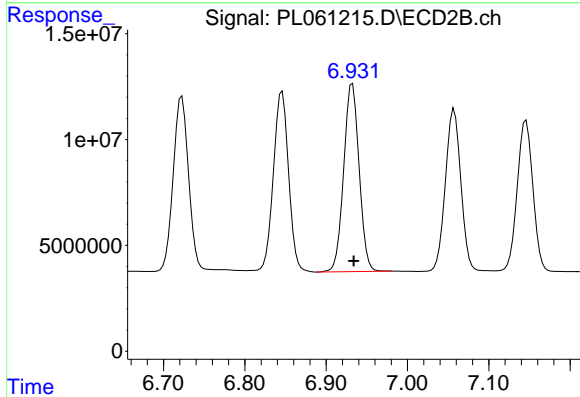


#14 Endrin
 R.T.: 6.723 min
 Delta R.T.: -0.002 min
 Response: 109344549
 Conc: 43.05 ng/ml

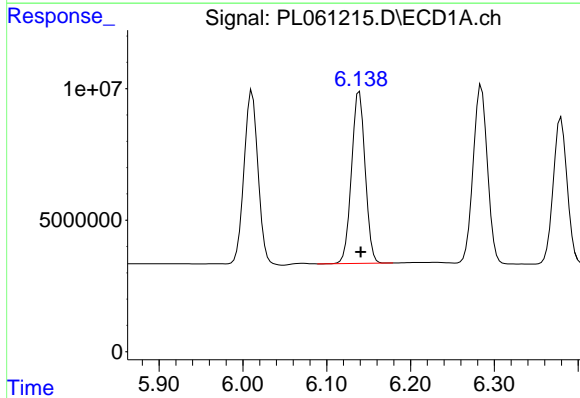


#15 Endosulfan II
R.T.: 6.285 min
Delta R.T.: -0.002 min
Response: 80479700
Conc: 45.09 ng/ml

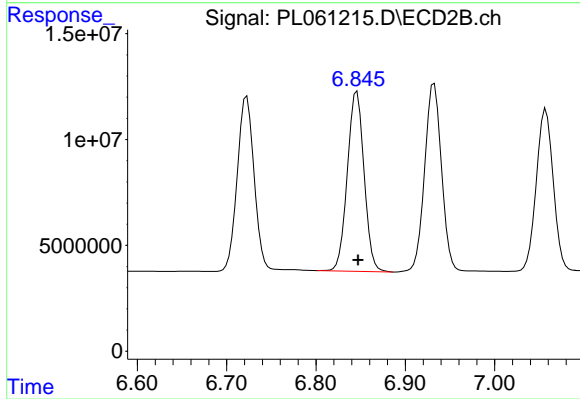
Instrument :
ECD_L
ClientSampleId :
PB131394BS



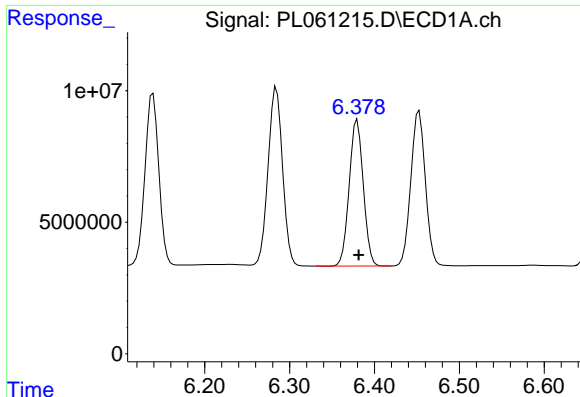
#15 Endosulfan II
R.T.: 6.932 min
Delta R.T.: -0.002 min
Response: 116675397
Conc: 45.36 ng/ml



#16 4,4'-DDD
R.T.: 6.139 min
Delta R.T.: -0.002 min
Response: 73886010
Conc: 46.74 ng/ml



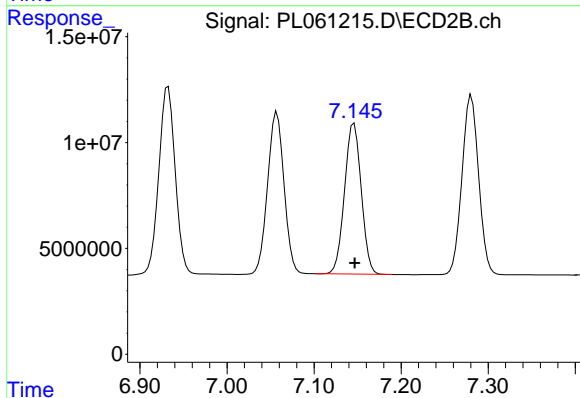
#16 4,4'-DDD
R.T.: 6.846 min
Delta R.T.: -0.001 min
Response: 110502349
Conc: 47.32 ng/ml



#17 4,4'-DDT

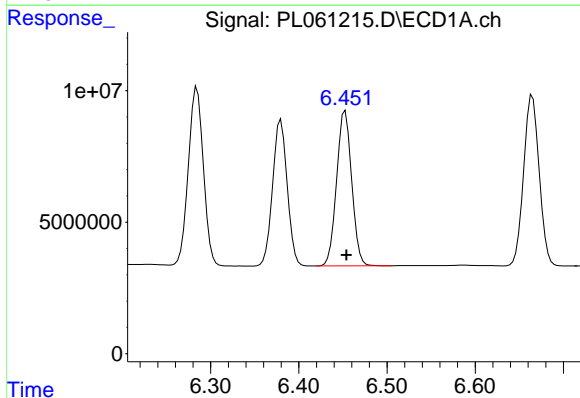
R.T.: 6.380 min
 Delta R.T.: -0.002 min
 Response: 64101698
 Conc: 42.41 ng/ml

Instrument :
 ECD_L
 ClientSampleId :
 PB131394BS



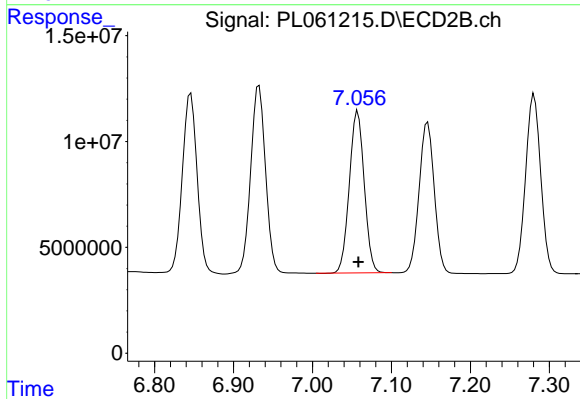
#17 4,4'-DDT

R.T.: 7.146 min
 Delta R.T.: -0.001 min
 Response: 94848070
 Conc: 41.18 ng/ml



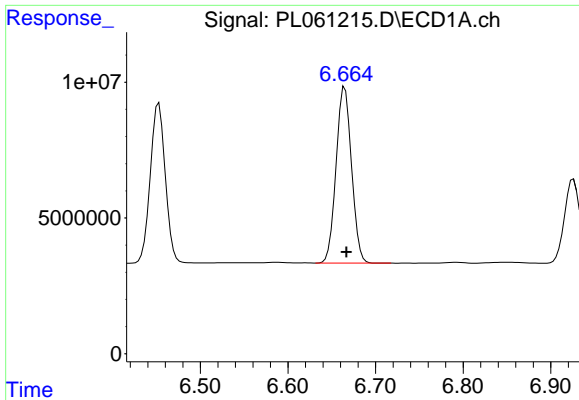
#18 Endrin aldehyde

R.T.: 6.453 min
 Delta R.T.: -0.001 min
 Response: 70081555
 Conc: 46.28 ng/ml



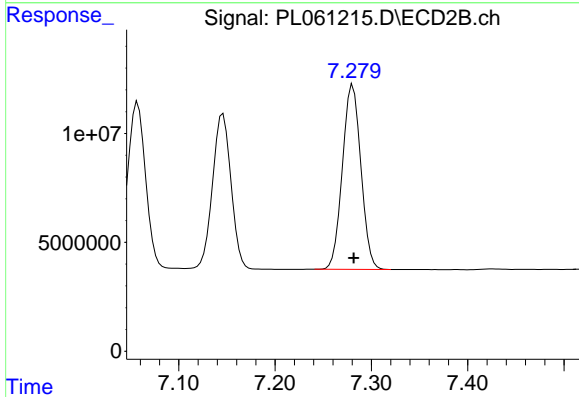
#18 Endrin aldehyde

R.T.: 7.057 min
 Delta R.T.: 0.000 min
 Response: 100596137
 Conc: 46.11 ng/ml

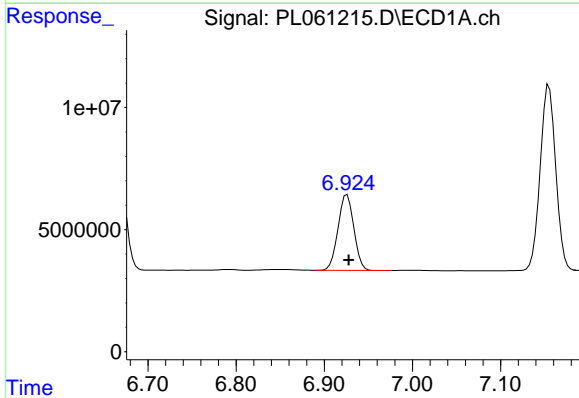


#19 Endosulfan Sulfate
 R.T.: 6.665 min
 Delta R.T.: -0.002 min
 Response: 79558171
 Conc: 46.46 ng/ml

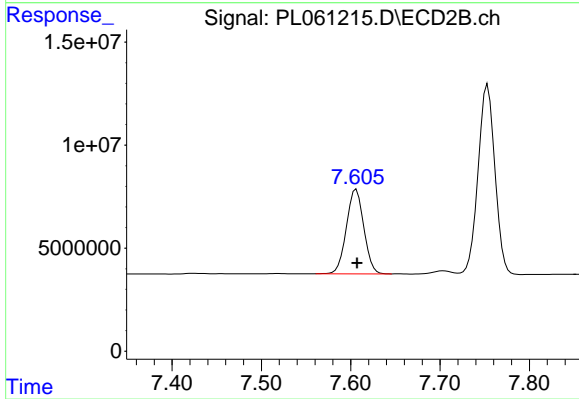
Instrument :
 ECD_L
 ClientSampleId :
 PB131394BS



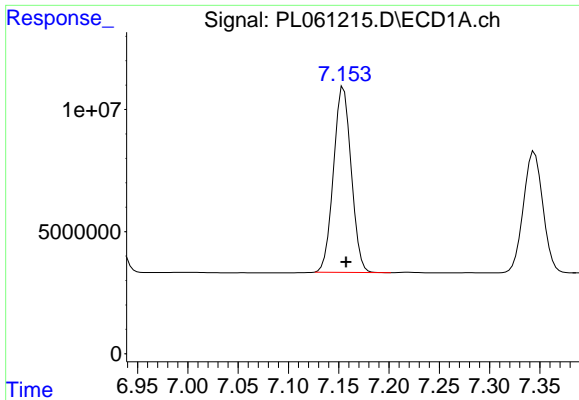
#19 Endosulfan Sulfate
 R.T.: 7.281 min
 Delta R.T.: -0.001 min
 Response: 112785490
 Conc: 46.53 ng/ml



#20 Methoxychlor
 R.T.: 6.926 min
 Delta R.T.: -0.002 min
 Response: 38670371
 Conc: 43.08 ng/ml

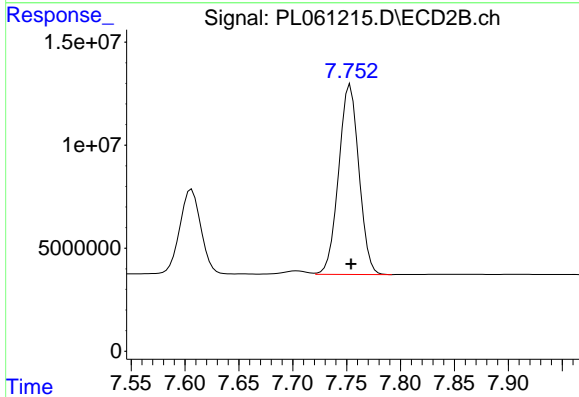


#20 Methoxychlor
 R.T.: 7.606 min
 Delta R.T.: -0.001 min
 Response: 55571448
 Conc: 42.98 ng/ml

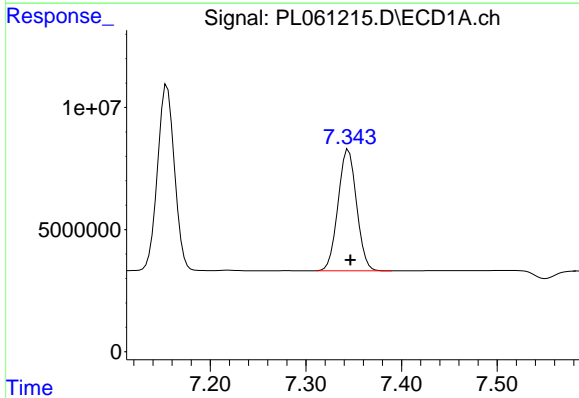


#21 Endrin ketone
 R.T.: 7.155 min
 Delta R.T.: -0.002 min
 Response: 92890992
 Conc: 48.12 ng/ml

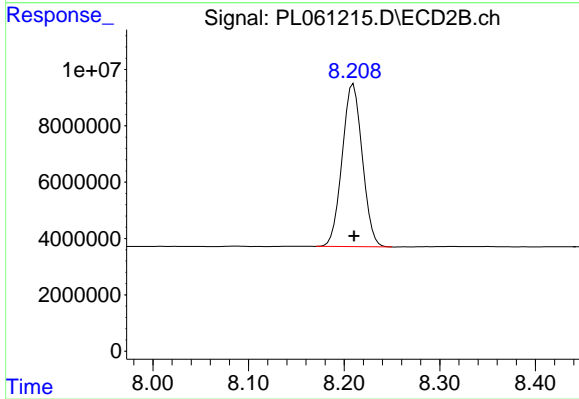
Instrument :
 ECD_L
 ClientSampled :
 PB131394BS



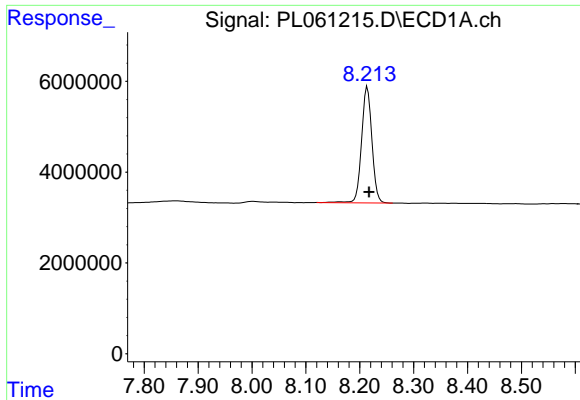
#21 Endrin ketone
 R.T.: 7.753 min
 Delta R.T.: 0.000 min
 Response: 120448859
 Conc: 48.39 ng/ml



#22 Mirex
 R.T.: 7.344 min
 Delta R.T.: -0.002 min
 Response: 66934316
 Conc: 47.00 ng/ml



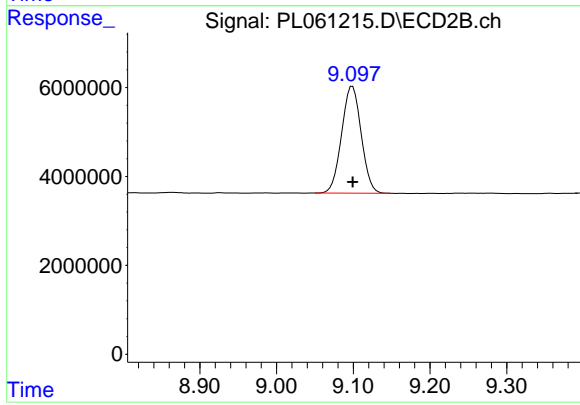
#22 Mirex
 R.T.: 8.210 min
 Delta R.T.: 0.000 min
 Response: 84690572
 Conc: 48.67 ng/ml



#28 Decachlorobiphenyl

R.T.: 8.214 min
Delta R.T.: -0.003 min
Response: 34171618
Conc: 20.28 ng/ml

Instrument :
ECD_L
ClientSampled :
PB131394BS



#28 Decachlorobiphenyl

R.T.: 9.099 min
Delta R.T.: 0.000 min
Response: 42842096
Conc: 20.30 ng/ml