

Data Path : Z:\pestpcbsrv\HPCHEM1\ECD_L\Data\PL090320\
 Data File : PL061229.D
 Signal(s) : Signal #1: ECD1A.ch Signal #2: ECD2B.ch
 Acq On : 03 Sep 2020 16:31
 Operator : DD\AJ
 Sample : PSTDCCC050
 Misc :
 ALS Vial : 4 Sample Multiplier: 1

Instrument :
 ECD_L
 ClientSampleId :
 PSTDCCC050

Integration File signal 1: autoint1.e
 Integration File signal 2: autoint2.e
 Quant Time: Sep 03 16:54:46 2020
 Quant Method : Z:\pestpcbsrv\HPCHEM1\ECD_L\methods\PL082520.M
 Quant Title : GC Extractables
 QLast Update : Tue Aug 25 16:59:57 2020
 Response via : Initial Calibration
 Integrator: ChemStation

Volume Inj. : 1 µl
 Signal #1 Phase : ZB-MR2 Signal #2 Phase: ZB-MR1
 Signal #1 Info : 30M x 0.32mm x0.2 Signal #2 Info : 30M x 0.32mm x0.5µm

	Compound	RT#1	RT#2	Resp#1	Resp#2	ng/ml	ng/ml

System Monitoring Compounds							
1)	SA Tetrachlo...	3.465	4.010	98542199	139.7E6	53.399	53.754
28)	SA Decachlor...	8.218	9.102	74104179	100.2E6	43.989	47.486
Target Compounds							
2)	A alpha-BHC	3.901	4.400	152.5E6	221.0E6	53.925	54.400
3)	MA gamma-BHC...	4.185	4.686	137.1E6	202.9E6	53.698	53.942
4)	MA Heptachlor	4.487	5.197	120.6E6	178.8E6	51.376	48.855
5)	MB Aldrin	4.735	5.503	111.6E6	172.5E6	53.493	51.176
6)	B beta-BHC	4.436	4.857	55597765	84578668	54.428	56.791
7)	B delta-BHC	4.640	5.074	129.9E6	179.1E6	54.678	65.188
8)	B Heptachlo...	5.178	5.891	105.7E6	152.3E6	53.597	58.239
9)	A Endosulfan I	5.516	6.249	96201262	137.1E6	52.941	47.679
10)	B gamma-Chl...	5.405	6.126	104.6E6	151.7E6	53.254	48.837
11)	B alpha-Chl...	5.463	6.200	103.5E6	149.5E6	53.023	48.078
12)	B 4,4'-DDE	5.628	6.357	95687149	134.3E6	52.003	46.477
13)	MA Dieldrin	5.759	6.507	99997992	138.0E6	51.961	46.212
14)	MA Endrin	6.015	6.726	86453805	112.1E6	47.538	44.127
15)	B Endosulfa...	6.289	6.936	88598787	117.9E6	49.636	45.841
16)	A 4,4'-DDD	6.144	6.850	82846350	112.0E6	52.406	47.967
17)	MA 4,4'-DDT	6.384	7.149	70470484	93551746	46.620	40.622
18)	B Endrin al...	6.456	7.060	74009553	98502817	48.876	45.152
19)	B Endosulfa...	6.669	7.285	85018036	111.3E6	49.645	45.908
20)	A Methoxychlor	6.930	7.610	41359597	51756358	46.074	40.033
21)	B Endrin ke...	7.160	7.757	93627650	117.6E6	48.504	47.244
22)	Mirex	7.349	8.213	67525193	79988724	47.410	45.970

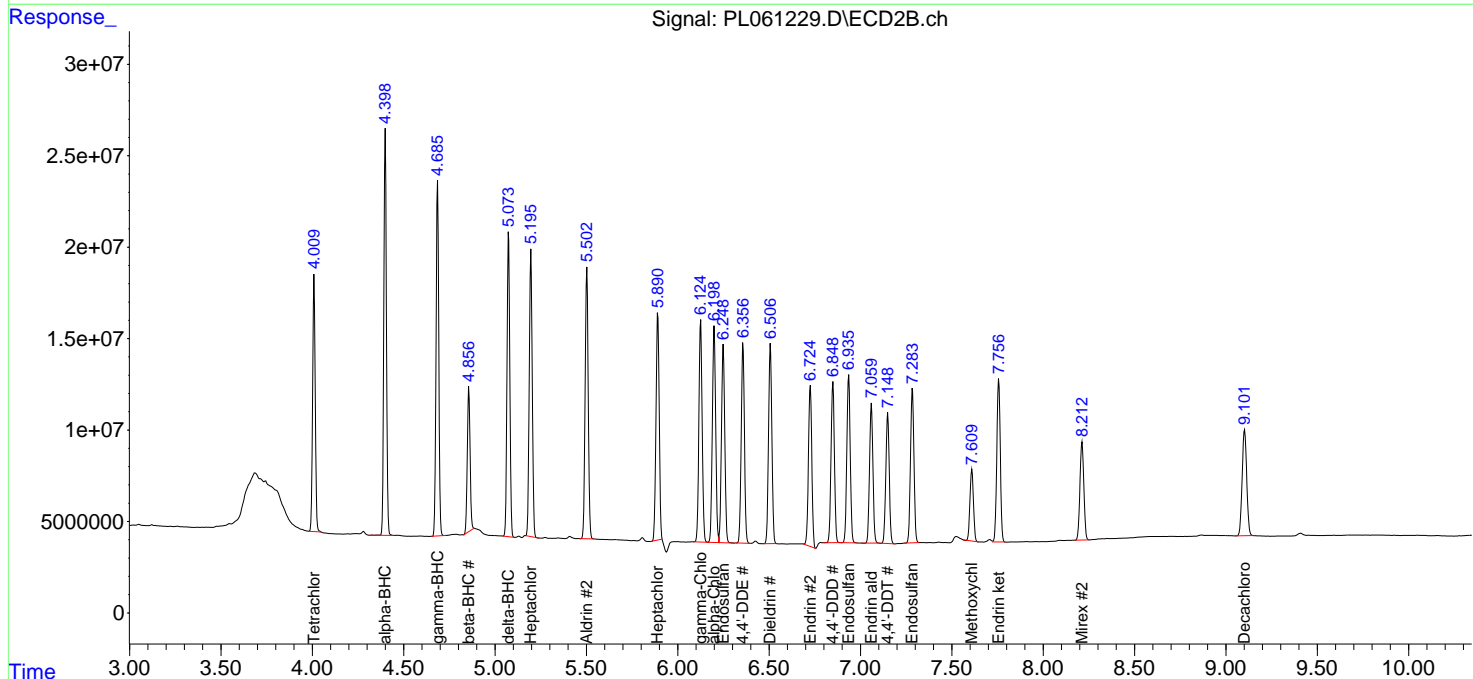
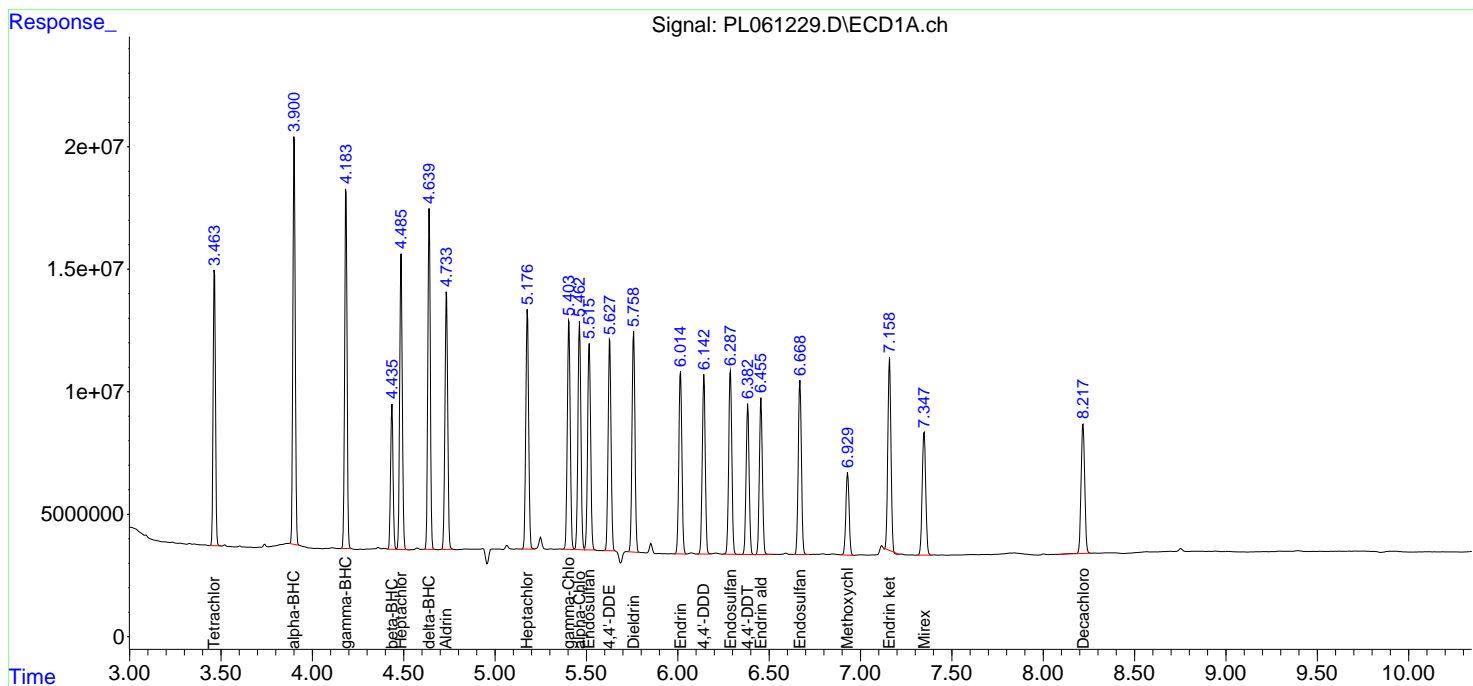
(f)=RT Delta > 1/2 Window (#)=Amounts differ by > 25% (m)=manual int.

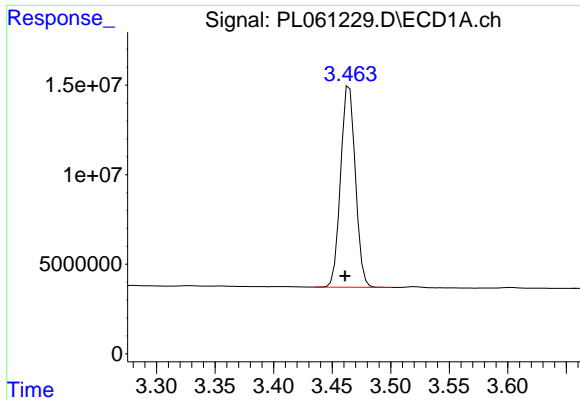
Data Path : Z:\pestpcbsrv\HPCHEM1\ECD_L\Data\PL090320\
 Data File : PL061229.D
 Signal(s) : Signal #1: ECD1A.ch Signal #2: ECD2B.ch
 Acq On : 03 Sep 2020 16:31
 Operator : DD\AJ
 Sample : PSTDCCC050
 Misc :
 ALS Vial : 4 Sample Multiplier: 1

Instrument :
 ECD_L
 ClientSampleId :
 PSTDCCC050

Integration File signal 1: autoint1.e
 Integration File signal 2: autoint2.e
 Quant Time: Sep 03 16:54:46 2020
 Quant Method : Z:\pestpcbsrv\HPCHEM1\ECD_L\methods\PL082520.M
 Quant Title : GC Extractables
 QLast Update : Tue Aug 25 16:59:57 2020
 Response via : Initial Calibration
 Integrator: ChemStation

Volume Inj. : 1 µl
 Signal #1 Phase : ZB-MR2 Signal #2 Phase: ZB-MR1
 Signal #1 Info : 30M x 0.32mm x0.2 Signal #2 Info : 30M x 0.32mm x0.5µm

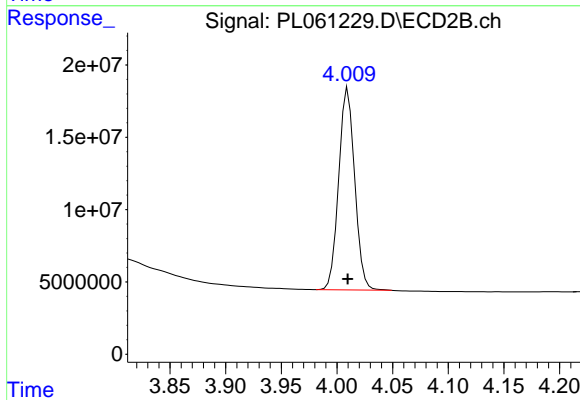




#1 Tetrachloro-m-xylene

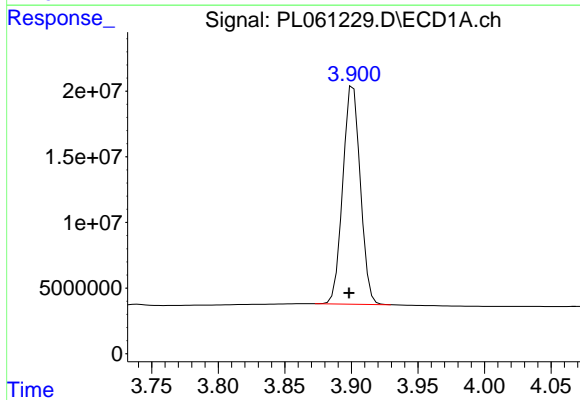
R.T.: 3.465 min
 Delta R.T.: 0.004 min
 Response: 98542199
 Conc: 53.40 ng/ml

Instrument :
 ECD_L
 ClientSampleId :
 PSTDCCC050



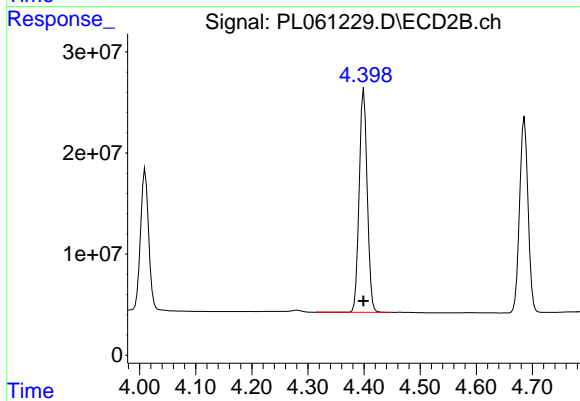
#1 Tetrachloro-m-xylene

R.T.: 4.010 min
 Delta R.T.: 0.000 min
 Response: 139707359
 Conc: 53.75 ng/ml



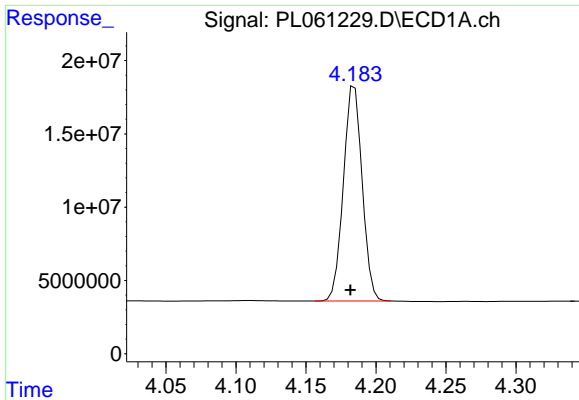
#2 alpha-BHC

R.T.: 3.901 min
 Delta R.T.: 0.003 min
 Response: 152490711
 Conc: 53.93 ng/ml



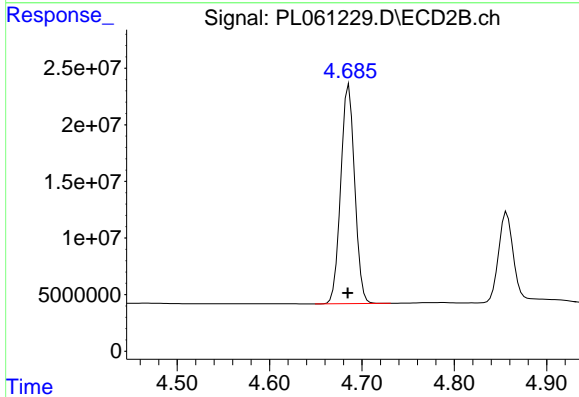
#2 alpha-BHC

R.T.: 4.400 min
 Delta R.T.: 0.000 min
 Response: 220985427
 Conc: 54.40 ng/ml

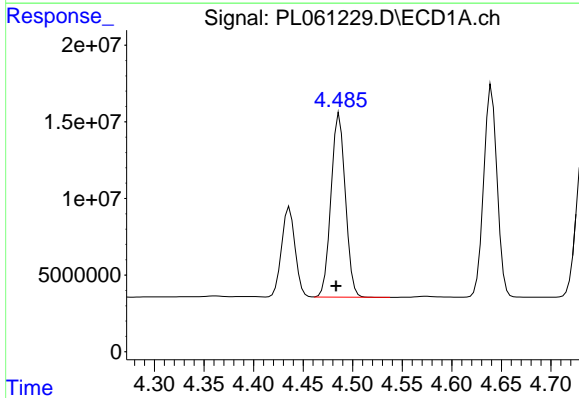


#3 gamma-BHC (Lindane)
 R.T.: 4.185 min
 Delta R.T.: 0.003 min
 Response: 137086958
 Conc: 53.70 ng/ml

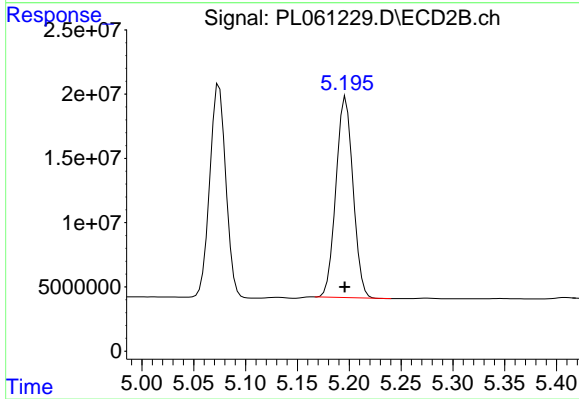
Instrument :
 ECD_L
 ClientSampleId :
 PSTDCCC050



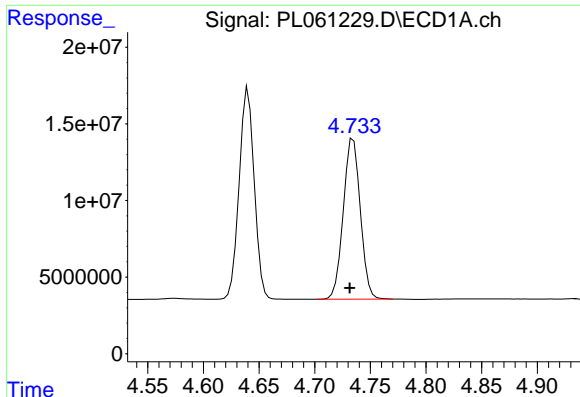
#3 gamma-BHC (Lindane)
 R.T.: 4.686 min
 Delta R.T.: 0.001 min
 Response: 202895594
 Conc: 53.94 ng/ml



#4 Heptachlor
 R.T.: 4.487 min
 Delta R.T.: 0.004 min
 Response: 120574202
 Conc: 51.38 ng/ml

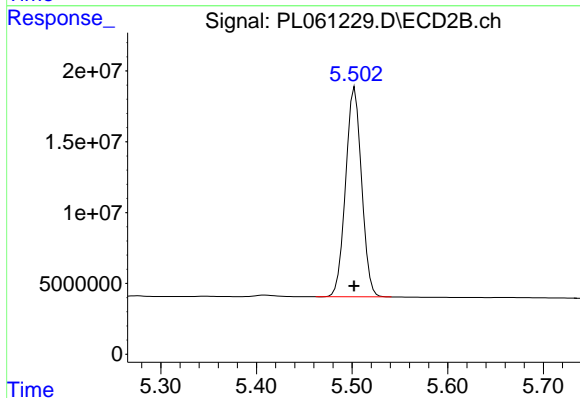


#4 Heptachlor
 R.T.: 5.197 min
 Delta R.T.: 0.000 min
 Response: 178763008
 Conc: 48.85 ng/ml

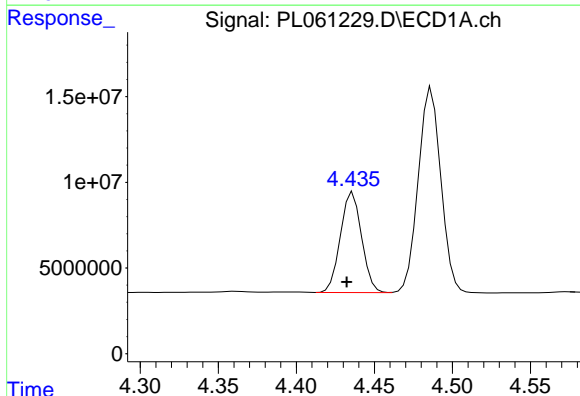


#5 Aldrin
 R.T.: 4.735 min
 Delta R.T.: 0.003 min
 Response: 111618660
 Conc: 53.49 ng/ml

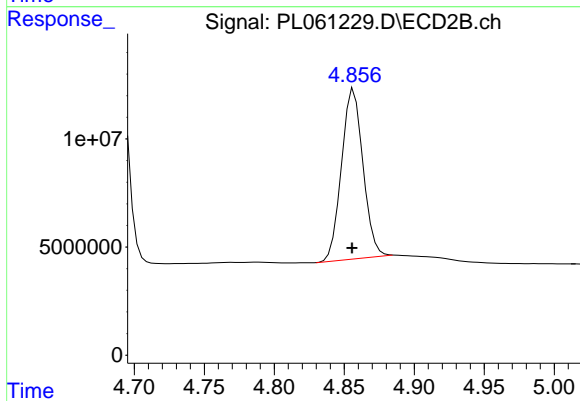
Instrument :
 ECD_L
 ClientSampled :
 PSTDCCC050



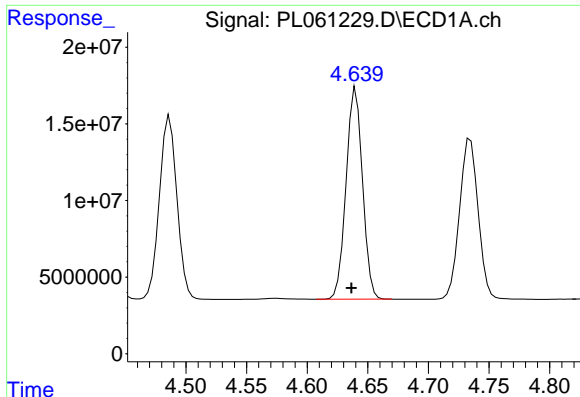
#5 Aldrin
 R.T.: 5.503 min
 Delta R.T.: 0.000 min
 Response: 172480013
 Conc: 51.18 ng/ml



#6 beta-BHC
 R.T.: 4.436 min
 Delta R.T.: 0.004 min
 Response: 55597765
 Conc: 54.43 ng/ml



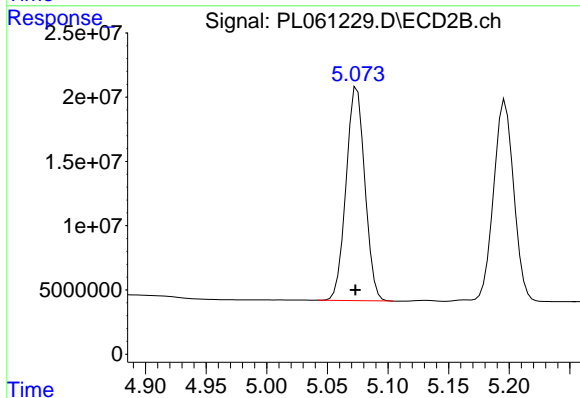
#6 beta-BHC
 R.T.: 4.857 min
 Delta R.T.: 0.001 min
 Response: 84578668
 Conc: 56.79 ng/ml



#7 delta-BHC

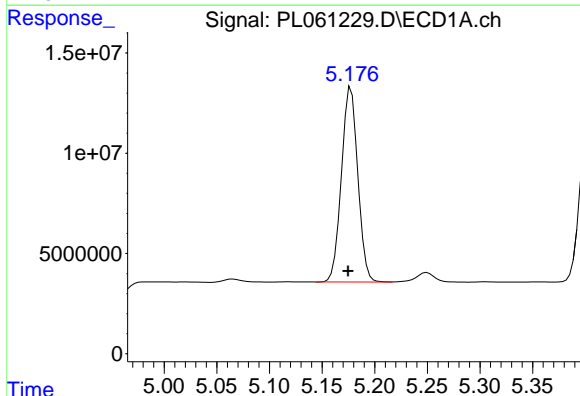
R.T.: 4.640 min
Delta R.T.: 0.004 min
Response: 129923220
Conc: 54.68 ng/ml

Instrument :
ECD_L
ClientSampleId :
PSTDCCC050



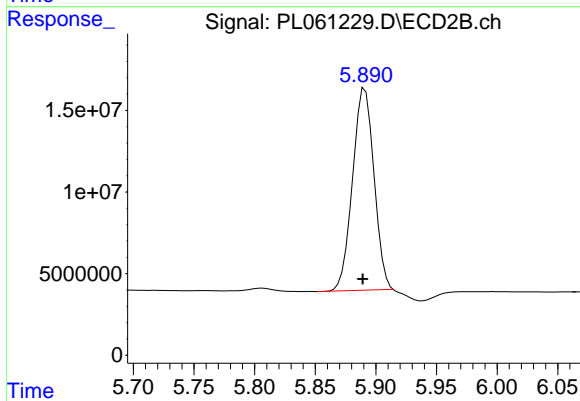
#7 delta-BHC

R.T.: 5.074 min
Delta R.T.: 0.001 min
Response: 179059452
Conc: 65.19 ng/ml



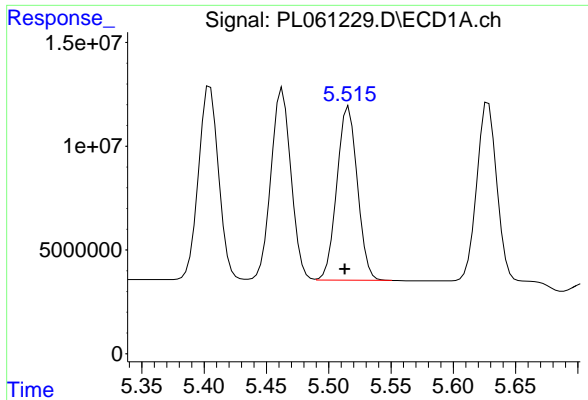
#8 Heptachlor epoxide

R.T.: 5.178 min
Delta R.T.: 0.003 min
Response: 105670972
Conc: 53.60 ng/ml



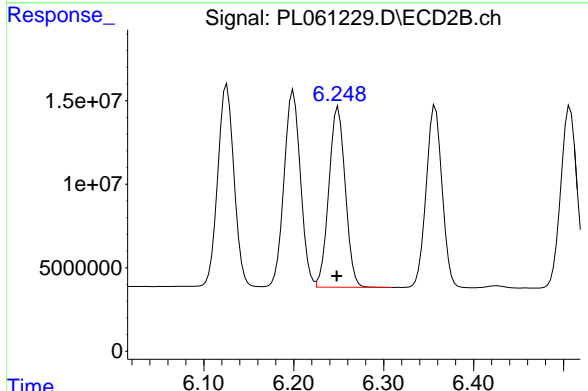
#8 Heptachlor epoxide

R.T.: 5.891 min
Delta R.T.: 0.002 min
Response: 152337440
Conc: 58.24 ng/ml

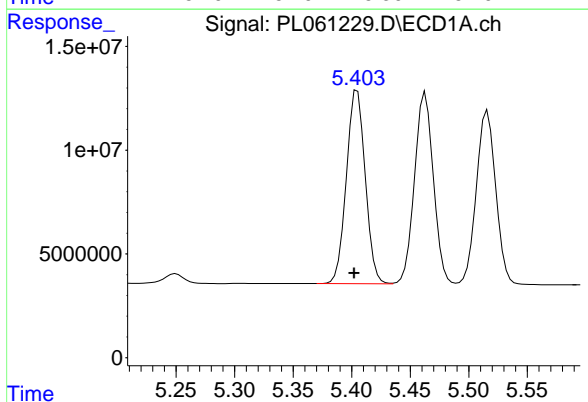


#9 Endosulfan I
 R.T.: 5.516 min
 Delta R.T.: 0.003 min
 Response: 96201262
 Conc: 52.94 ng/ml

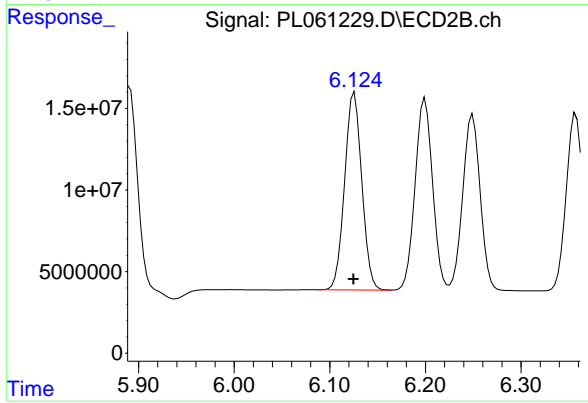
Instrument :
 ECD_L
 ClientSampleId :
 PSTDCCC050



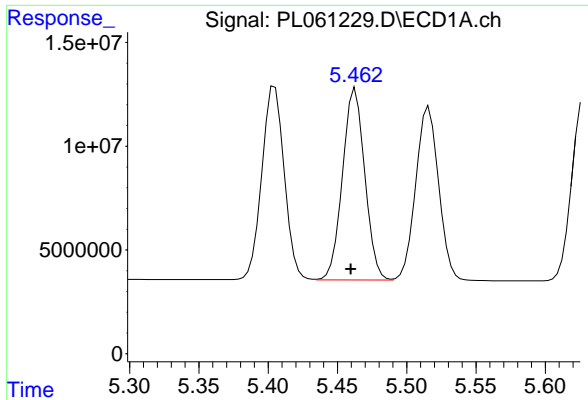
#9 Endosulfan I
 R.T.: 6.249 min
 Delta R.T.: 0.002 min
 Response: 137081098
 Conc: 47.68 ng/ml



#10 gamma-Chlordane
 R.T.: 5.405 min
 Delta R.T.: 0.003 min
 Response: 104640005
 Conc: 53.25 ng/ml

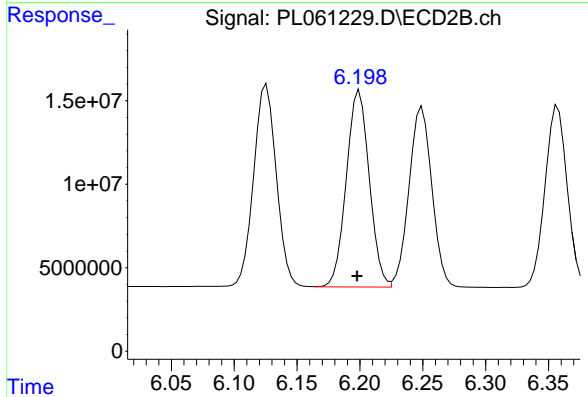


#10 gamma-Chlordane
 R.T.: 6.126 min
 Delta R.T.: 0.001 min
 Response: 151686803
 Conc: 48.84 ng/ml

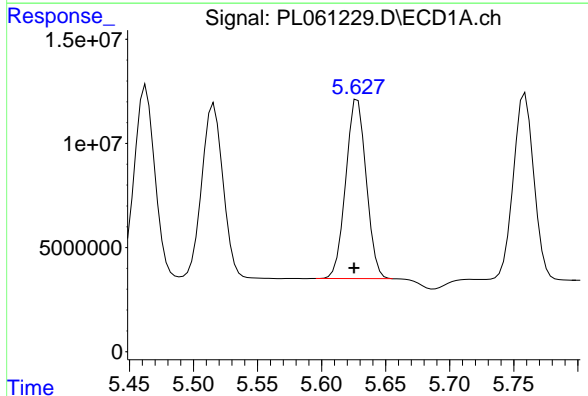


#11 alpha-Chlordane
R.T.: 5.463 min
Delta R.T.: 0.003 min
Response: 103485507
Conc: 53.02 ng/ml

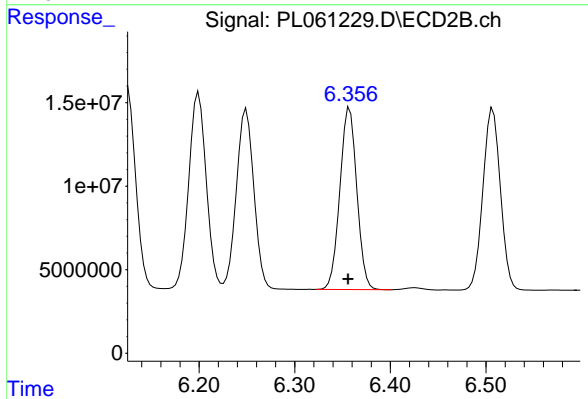
Instrument :
ECD_L
ClientSampled :
PSTDCCC050



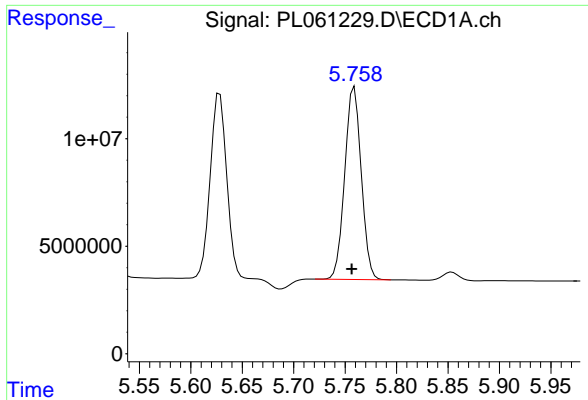
#11 alpha-Chlordane
R.T.: 6.200 min
Delta R.T.: 0.002 min
Response: 149472837
Conc: 48.08 ng/ml



#12 4,4'-DDE
R.T.: 5.628 min
Delta R.T.: 0.003 min
Response: 95687149
Conc: 52.00 ng/ml

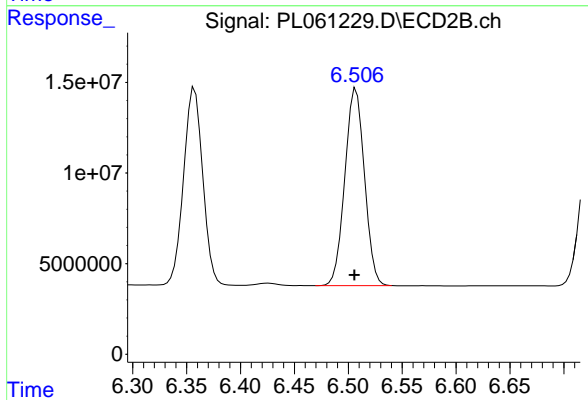


#12 4,4'-DDE
R.T.: 6.357 min
Delta R.T.: 0.002 min
Response: 134328883
Conc: 46.48 ng/ml

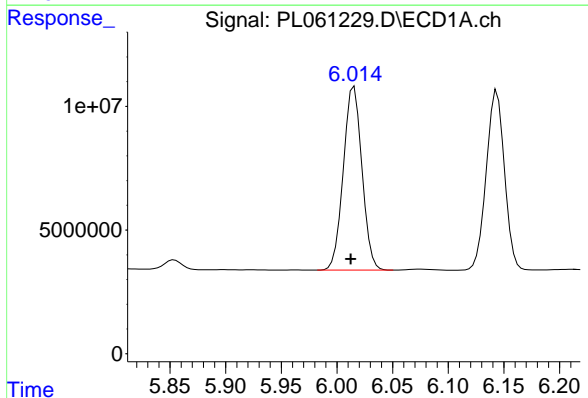


#13 Dieldrin
R.T.: 5.759 min
Delta R.T.: 0.003 min
Response: 99997992
Conc: 51.96 ng/ml

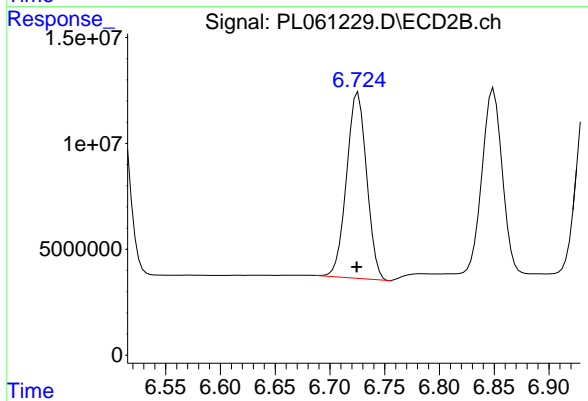
Instrument :
ECD_L
ClientSampleId :
PSTDCCC050



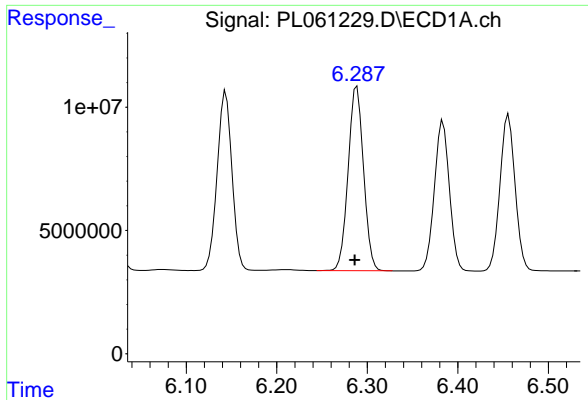
#13 Dieldrin
R.T.: 6.507 min
Delta R.T.: 0.002 min
Response: 138006839
Conc: 46.21 ng/ml



#14 Endrin
R.T.: 6.015 min
Delta R.T.: 0.003 min
Response: 86453805
Conc: 47.54 ng/ml

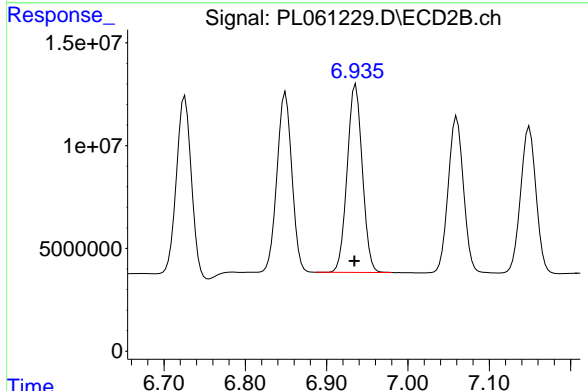


#14 Endrin
R.T.: 6.726 min
Delta R.T.: 0.001 min
Response: 112077039
Conc: 44.13 ng/ml

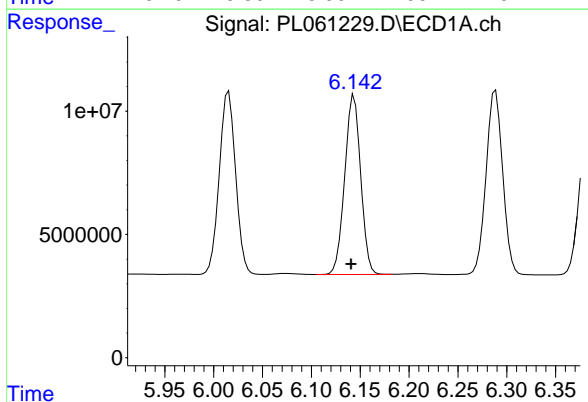


#15 Endosulfan II
 R.T.: 6.289 min
 Delta R.T.: 0.002 min
 Response: 88598787
 Conc: 49.64 ng/ml

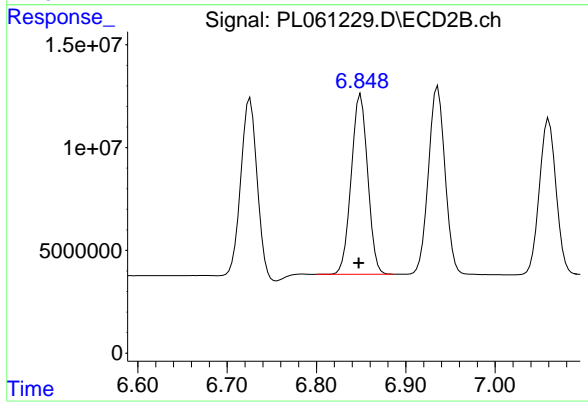
Instrument :
 ECD_L
 ClientSampleId :
 PSTDCCC050



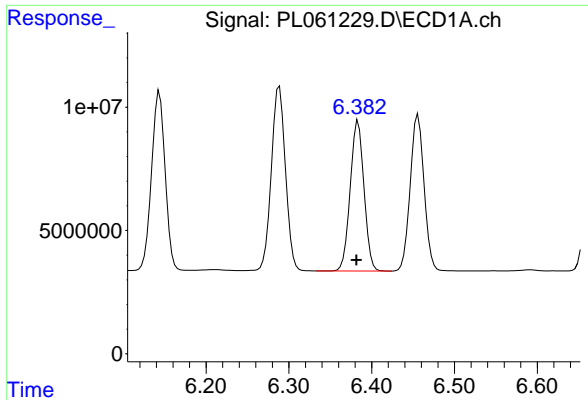
#15 Endosulfan II
 R.T.: 6.936 min
 Delta R.T.: 0.002 min
 Response: 117922120
 Conc: 45.84 ng/ml



#16 4,4'-DDD
 R.T.: 6.144 min
 Delta R.T.: 0.003 min
 Response: 82846350
 Conc: 52.41 ng/ml

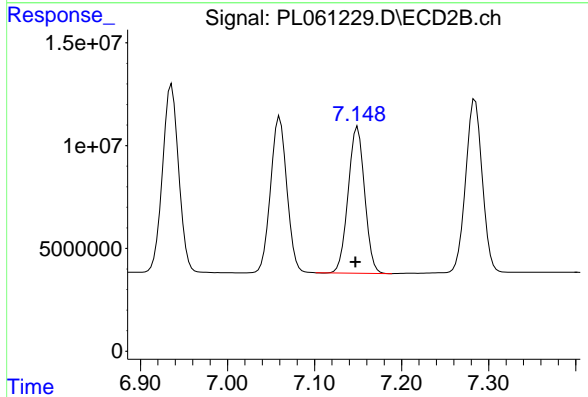


#16 4,4'-DDD
 R.T.: 6.850 min
 Delta R.T.: 0.002 min
 Response: 112019384
 Conc: 47.97 ng/ml

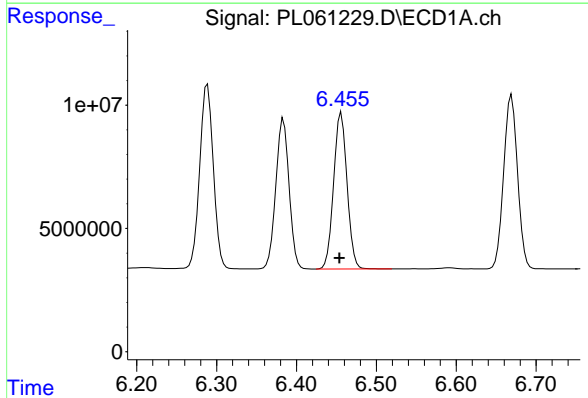


#17 4,4'-DDT
R.T.: 6.384 min
Delta R.T.: 0.002 min
Response: 70470484
Conc: 46.62 ng/ml

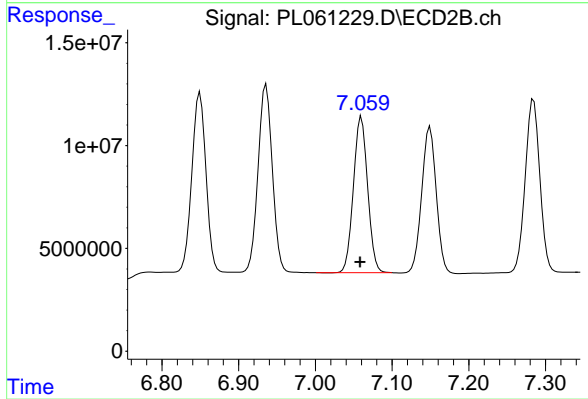
Instrument :
ECD_L
ClientSampleId :
PSTDCCC050



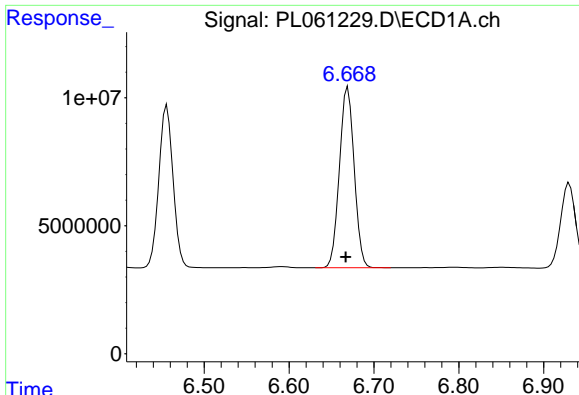
#17 4,4'-DDT
R.T.: 7.149 min
Delta R.T.: 0.003 min
Response: 93551746
Conc: 40.62 ng/ml



#18 Endrin aldehyde
R.T.: 6.456 min
Delta R.T.: 0.002 min
Response: 74009553
Conc: 48.88 ng/ml

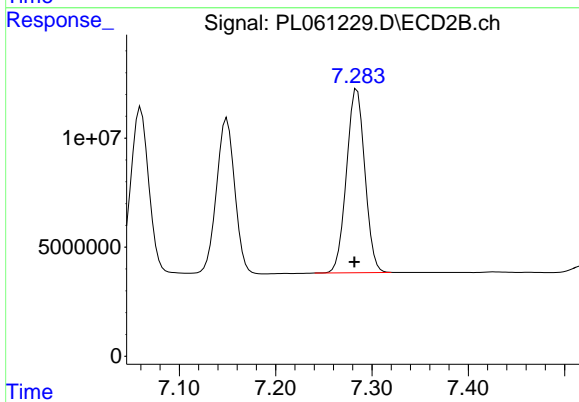


#18 Endrin aldehyde
R.T.: 7.060 min
Delta R.T.: 0.002 min
Response: 98502817
Conc: 45.15 ng/ml

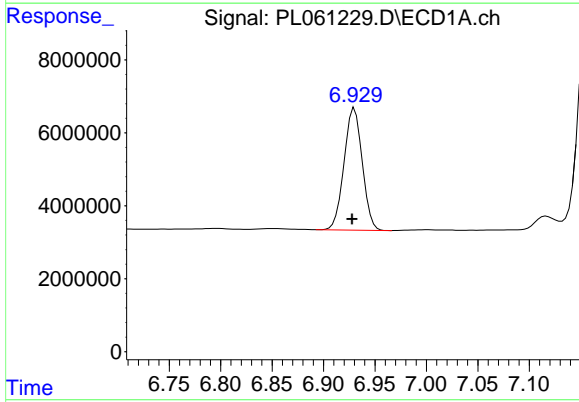


#19 Endosulfan Sulfate
 R.T.: 6.669 min
 Delta R.T.: 0.002 min
 Response: 85018036
 Conc: 49.65 ng/ml

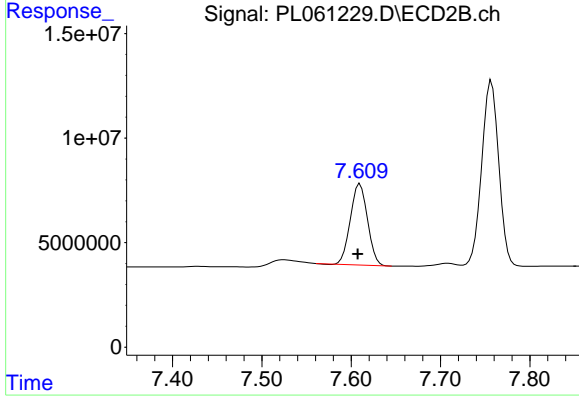
Instrument :
 ECD_L
 ClientSampleId :
 PSTDCCC050



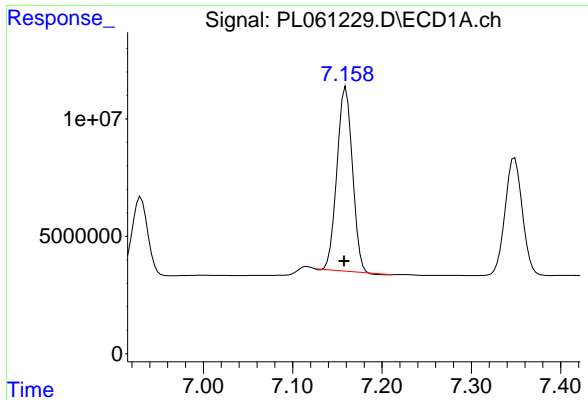
#19 Endosulfan Sulfate
 R.T.: 7.285 min
 Delta R.T.: 0.003 min
 Response: 111266074
 Conc: 45.91 ng/ml



#20 Methoxychlor
 R.T.: 6.930 min
 Delta R.T.: 0.002 min
 Response: 41359597
 Conc: 46.07 ng/ml

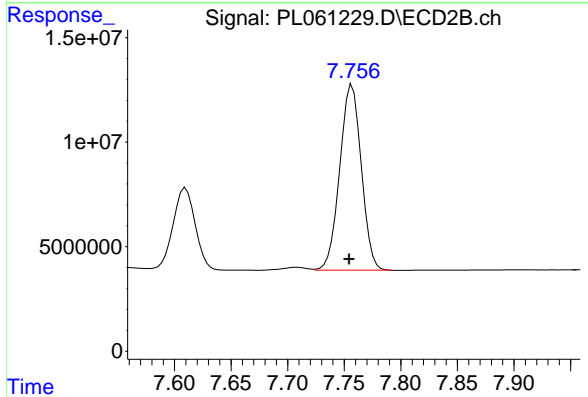


#20 Methoxychlor
 R.T.: 7.610 min
 Delta R.T.: 0.003 min
 Response: 51756358
 Conc: 40.03 ng/ml

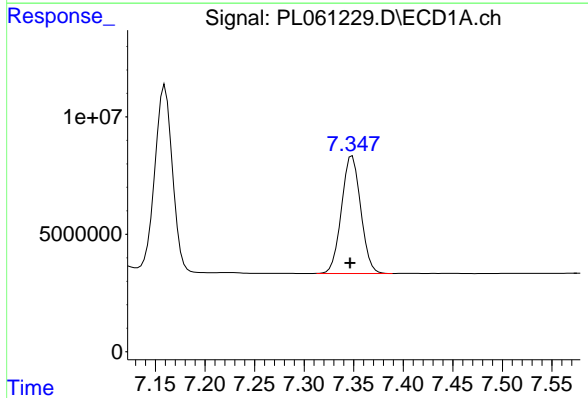


#21 Endrin ketone
 R.T.: 7.160 min
 Delta R.T.: 0.002 min
 Response: 93627650
 Conc: 48.50 ng/ml

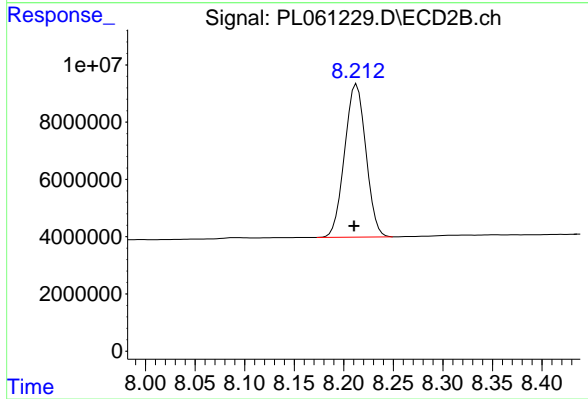
Instrument :
 ECD_L
 ClientSampleId :
 PSTDCCC050



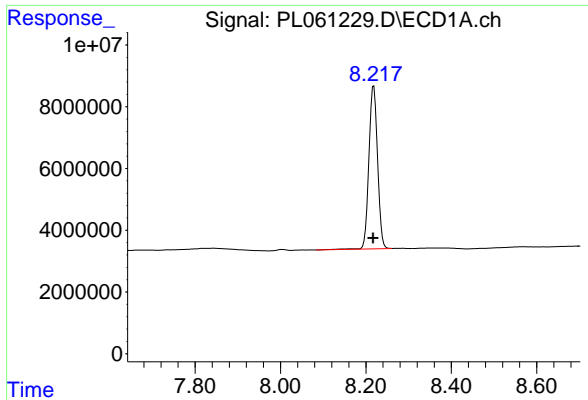
#21 Endrin ketone
 R.T.: 7.757 min
 Delta R.T.: 0.003 min
 Response: 117590839
 Conc: 47.24 ng/ml



#22 Mirex
 R.T.: 7.349 min
 Delta R.T.: 0.002 min
 Response: 67525193
 Conc: 47.41 ng/ml



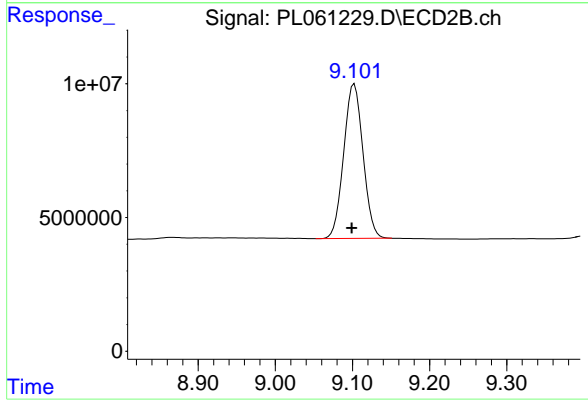
#22 Mirex
 R.T.: 8.213 min
 Delta R.T.: 0.003 min
 Response: 79988724
 Conc: 45.97 ng/ml



#28 Decachlorobiphenyl

R.T.: 8.218 min
Delta R.T.: 0.001 min
Response: 74104179
Conc: 43.99 ng/ml

Instrument :
ECD_L
ClientSampled :
PSTDCCC050



#28 Decachlorobiphenyl

R.T.: 9.102 min
Delta R.T.: 0.003 min
Response: 100196716
Conc: 47.49 ng/ml