

Data Path : Z:\pestpcbsrv\HPCHEM1\ECD_L\Data\PL090320\
 Data File : PL061230.D
 Signal(s) : Signal #1: ECD1A.ch Signal #2: ECD2B.ch
 Acq On : 03 Sep 2020 16:45
 Operator : DD\AJ
 Sample : L3877-02
 Misc :
 ALS Vial : 18 Sample Multiplier: 1

Instrument :
 ECD_L
ClientSampled :
 TP-1

Manual Integrations
APPROVED
 Ankita
 9/4/2020 2:41:32 PM

Integration File signal 1: autoint1.e
 Integration File signal 2: autoint2.e
 Quant Time: Sep 04 08:14:29 2020
 Quant Method : Z:\pestpcbsrv\HPCHEM1\ECD_L\methods\PL082520.M
 Quant Title : GC Extractables
 QLast Update : Tue Aug 25 16:59:57 2020
 Response via : Initial Calibration
 Integrator: ChemStation

Volume Inj. : 1 µl
 Signal #1 Phase : ZB-MR2 Signal #2 Phase: ZB-MR1
 Signal #1 Info : 30M x 0.32mm x0.2 Signal #2 Info : 30M x 0.32mm x0.5µm

Compound	RT#1	RT#2	Resp#1	Resp#2	ng/ml	ng/ml

System Monitoring Compounds						
1) SA Tetrachlo...	3.436f	4.003	4801.4E6	139.1E6	2601.822m	53.515 #
28) SA Decachlor...	8.207	9.099	25409994	9368586	15.084m	4.440m#

Target Compounds

(f)=RT Delta > 1/2 Window (#)=Amounts differ by > 25% (m)=manual int.

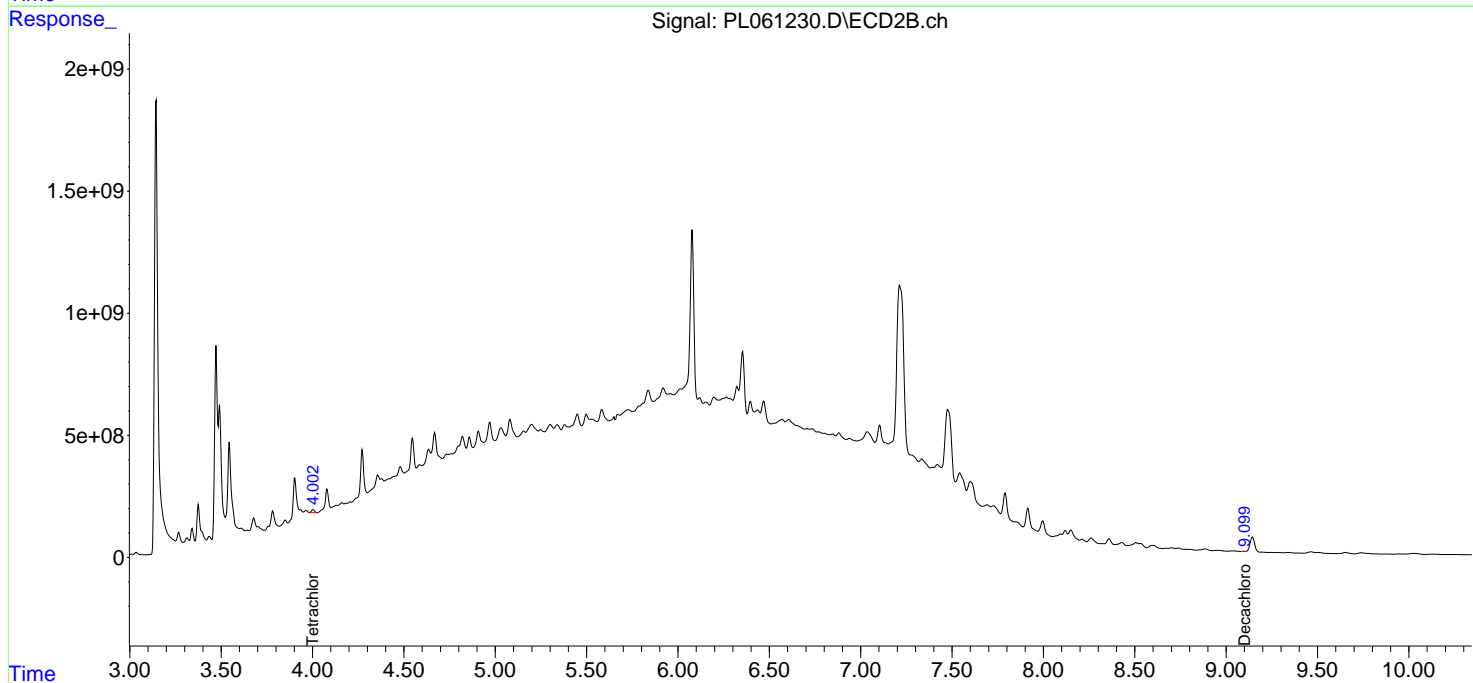
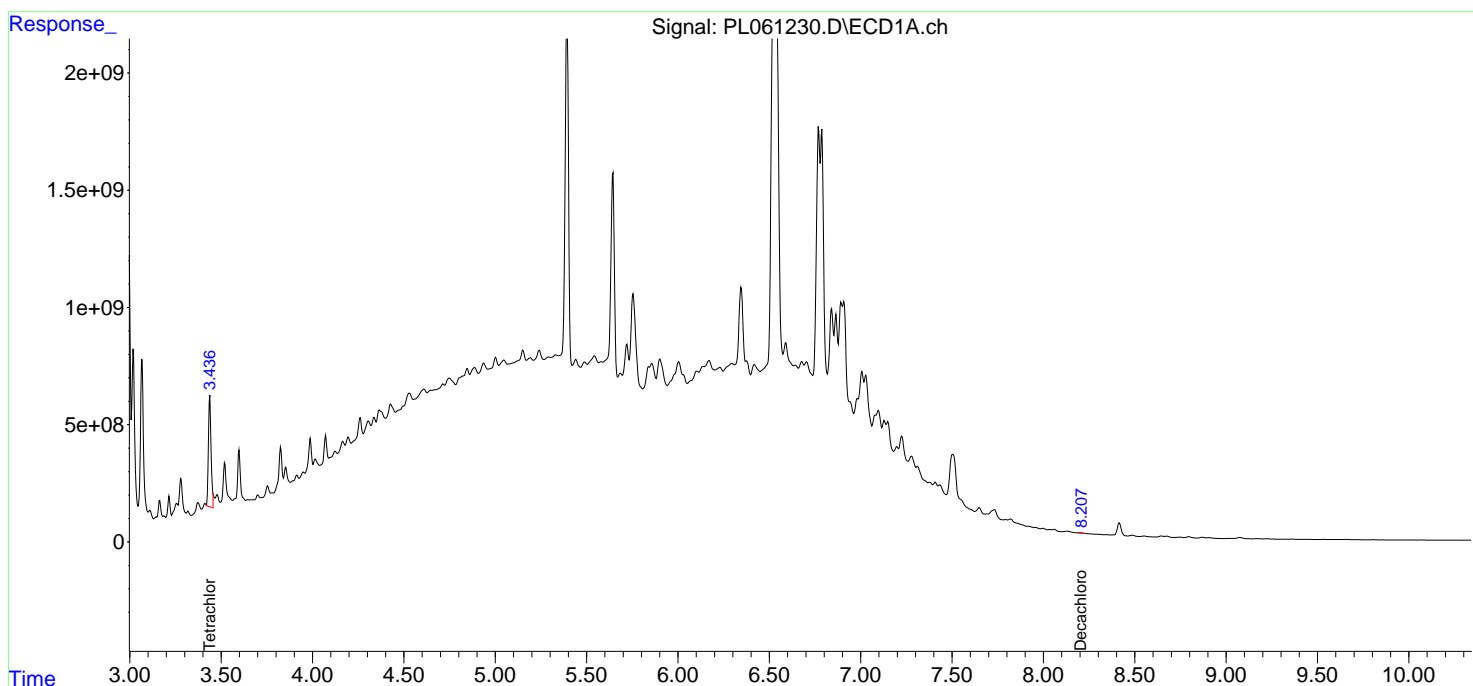
Data Path : Z:\pestpcbsrv\HPCHEM1\ECD_L\Data\PL090320\
 Data File : PL061230.D
 Signal(s) : Signal #1: ECD1A.ch Signal #2: ECD2B.ch
 Acq On : 03 Sep 2020 16:45
 Operator : DD\AJ
 Sample : L3877-02
 Misc :
 ALS Vial : 18 Sample Multiplier: 1

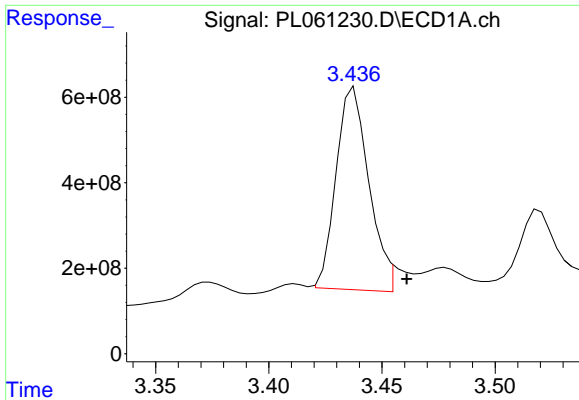
Instrument :
 ECD_L
 ClientSampled :
 TP-1

Manual Integrations
APPROVED
 Ankita
 9/4/2020 2:41:32 PM

Integration File signal 1: autoint1.e
 Integration File signal 2: autoint2.e
 Quant Time: Sep 04 08:14:29 2020
 Quant Method : Z:\pestpcbsrv\HPCHEM1\ECD_L\methods\PL082520.M
 Quant Title : GC Extractables
 QLast Update : Tue Aug 25 16:59:57 2020
 Response via : Initial Calibration
 Integrator: ChemStation

Volume Inj. : 1 µl
 Signal #1 Phase : ZB-MR2 Signal #2 Phase: ZB-MR1
 Signal #1 Info : 30M x 0.32mm x0.2 Signal #2 Info : 30M x 0.32mm x0.5µm

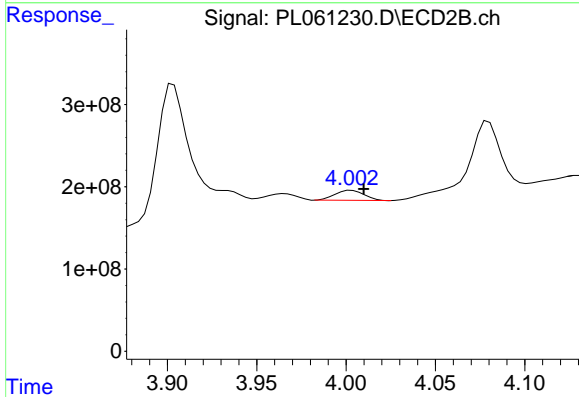




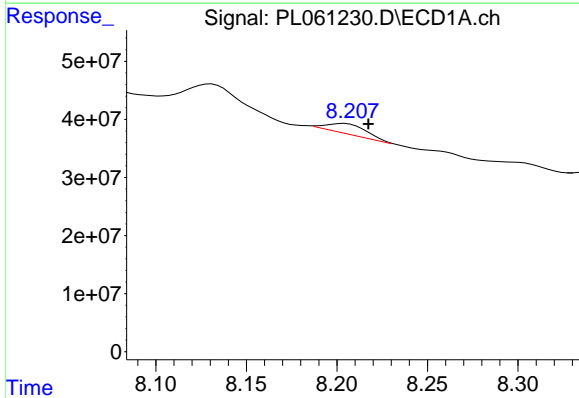
#1 Tetrachloro-m-xylene
 R.T.: 3.436 min
 Delta R.T.: -0.025 min
 Response: 4801381996
 Conc: 2601.82 ng/ml m

Instrument :
 ECD_L
 ClientSampled :
 TP-1

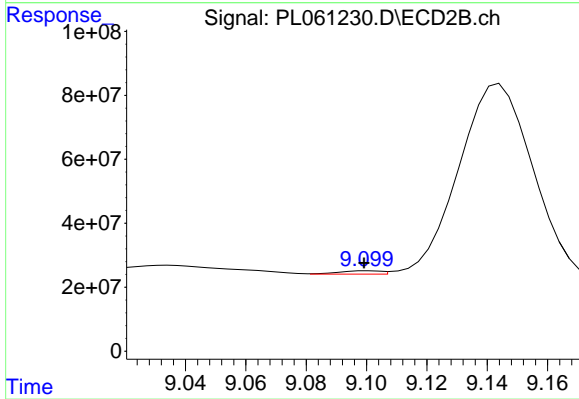
Manual Integrations
APPROVED
 Ankita
 9/4/2020 2:41:32 PM



#1 Tetrachloro-m-xylene
 R.T.: 4.003 min
 Delta R.T.: -0.007 min
 Response: 139088225
 Conc: 53.52 ng/ml



#28 Decachlorobiphenyl
 R.T.: 8.207 min
 Delta R.T.: -0.010 min
 Response: 25409994
 Conc: 15.08 ng/ml m



#28 Decachlorobiphenyl
 R.T.: 9.099 min
 Delta R.T.: 0.000 min
 Response: 9368586
 Conc: 4.44 ng/ml m