

Data Path : Z:\pestpcbsrv\HPCHEM1\ECD\_L\Data\PL090523\  
 Data File : PL085127.D  
 Signal(s) : Signal #1: ECD1A.ch Signal #2: ECD2B.ch  
 Acq On : 05 Sep 2023 18:18  
 Operator : AR\AJ  
 Sample : 04283-07MS  
 Misc :  
 ALS Vial : 9 Sample Multiplier: 1

Instrument :  
 ECD\_L  
 ClientSampleId :  
 C-2MS

Integration File signal 1: autoint1.e  
 Integration File signal 2: autoint2.e  
 Quant Time: Sep 05 22:39:27 2023  
 Quant Method : Z:\pestpcbsrv\HPCHEM1\ECD\_L\methods\PL090523.M  
 Quant Title : GC Extractables  
 QLast Update : Tue Sep 05 15:22:36 2023  
 Response via : Initial Calibration  
 Integrator: ChemStation

Volume Inj. : 1 µl  
 Signal #1 Phase : ZB-MR2 Signal #2 Phase: ZB-MR1  
 Signal #1 Info : 30M x 0.32mm x0.2 Signal #2 Info : 30M x 0.32mm x0.5µm

Compound	RT#1	RT#2	Resp#1	Resp#2	ng/ml	ng/ml
-----						
System Monitoring Compounds						
1) SA Tetrachlo...	3.477	2.685	30297447	14034355	12.387	12.352
28) SA Decachlor...	9.027	7.864	18660376	15216443	11.604	11.431
Target Compounds						
2) A alpha-BHC	3.935	3.189	155.2E6	76103367	45.038	46.532
3) MA gamma-BHC...	4.269	3.520	143.3E6	71726266	43.174	44.941
4) MA Heptachlor	4.861	3.861	151.9E6	73356154	46.059	48.336
5) MB Aldrin	5.204	4.140	134.8E6	70931852	43.832	46.401
6) B beta-BHC	4.469	3.822	62708728	31016189	44.370	45.710
7) B delta-BHC	4.715	4.050	136.1E6	70083830	43.050	44.821
8) B Heptachlo...	5.634	4.647	119.7E6	63880621	45.878	46.550
9) A Endosulfan I	6.020	5.017	109.9E6	63443362	45.778	45.944
10) B gamma-Chl...	5.891	4.899	118.5E6	65402439	45.622	47.417
11) B alpha-Chl...	5.971	4.964	116.2E6	66330340	45.170	44.386
12) B 4,4'-DDE	6.150	5.162	96610116	59796844	46.476	48.066
13) MA Dieldrin	6.297	5.284	108.0E6	64095094	44.332	45.592
14) MA Endrin	6.526	5.559	93649491	60449875	45.337	47.292
15) B Endosulfa...	6.747	5.857	85697306	54490040	42.350	44.007
16) A 4,4'-DDD	6.669	5.720	72626856	49762557	47.171	47.366
17) MA 4,4'-DDT	6.985	5.972	80725602	55210163	47.920	47.356
18) B Endrin al...	6.878	6.039	67304680	45479334	43.786	44.525
19) B Endosulfa...	7.114	6.263	83951681	54887186	44.850	45.739
20) A Methoxychlor	7.467	6.556	41471860	31010970	45.643	46.098
21) B Endrin ke...	7.598	6.768	84665257	66670232	43.221	45.201
22) Mirex	8.073	6.948	72875182	53536805	43.757	45.208
-----						

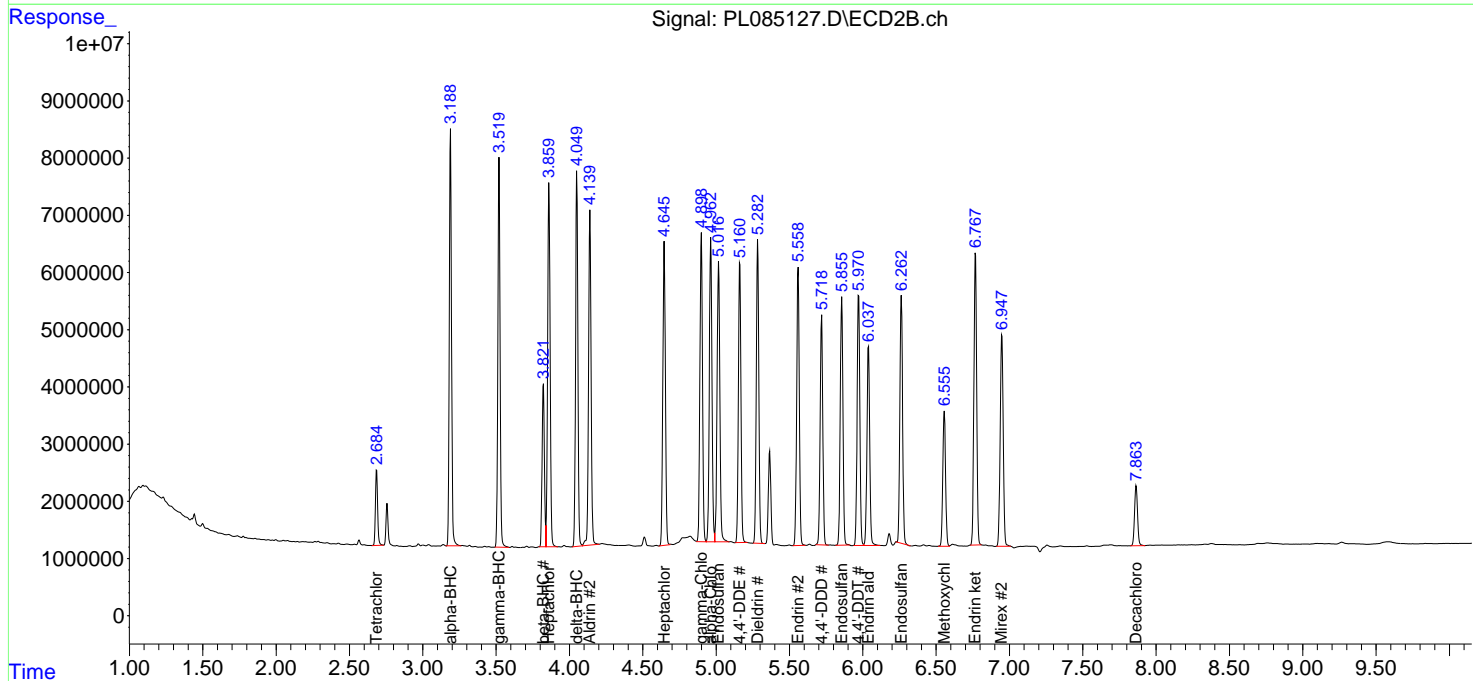
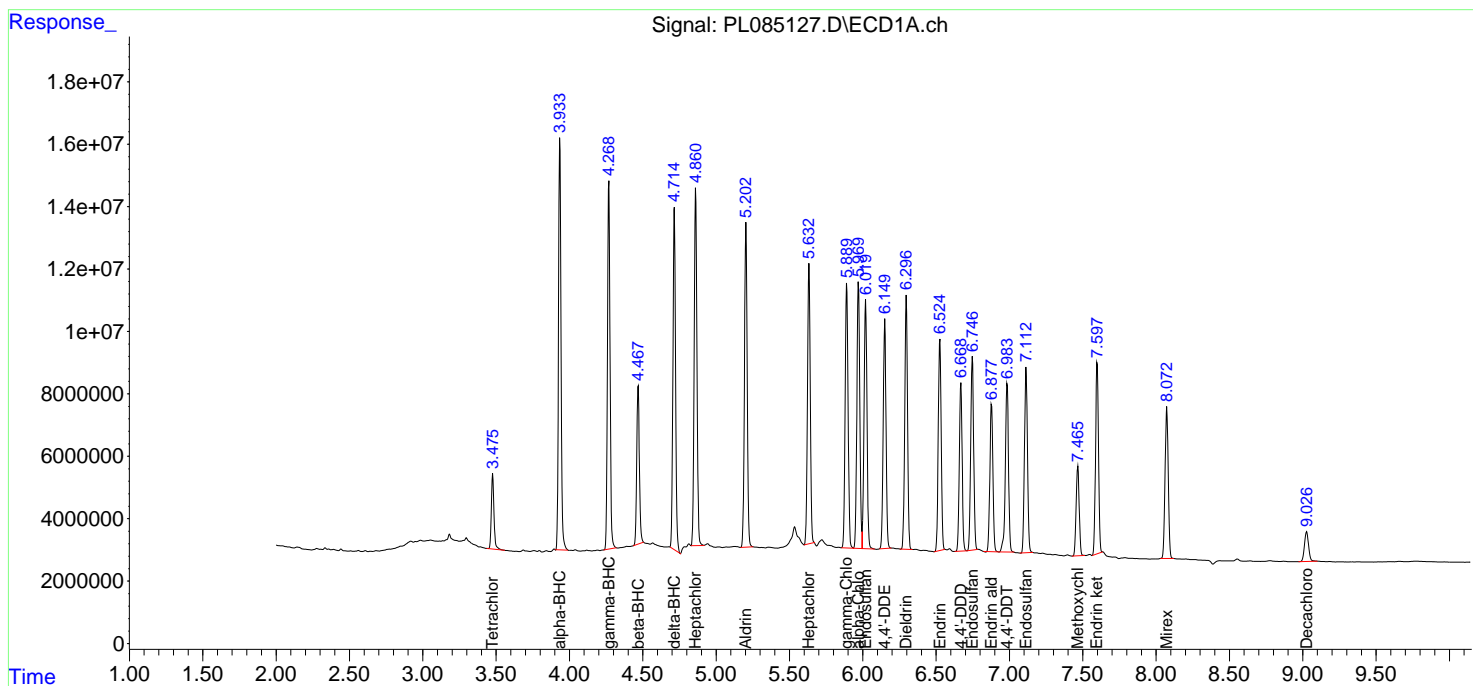
(f)=RT Delta > 1/2 Window (#)=Amounts differ by > 25% (m)=manual int.

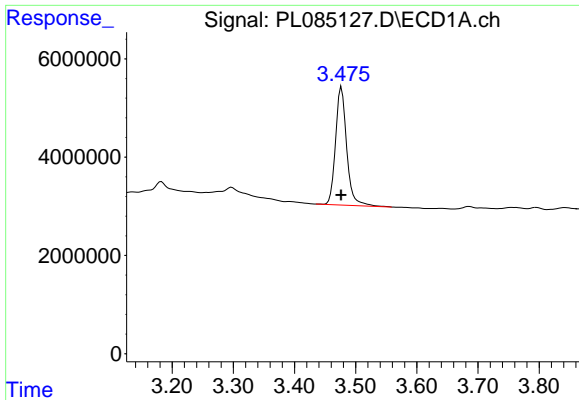
Data Path : Z:\pestpcbsrv\HPCHEM1\ECD\_L\Data\PL090523\  
 Data File : PL085127.D  
 Signal(s) : Signal #1: ECD1A.ch Signal #2: ECD2B.ch  
 Acq On : 05 Sep 2023 18:18  
 Operator : AR\AJ  
 Sample : 04283-07MS  
 Misc :  
 ALS Vial : 9 Sample Multiplier: 1

Instrument :  
 ECD\_L  
 ClientSampleId :  
 C-2MS

Integration File signal 1: autoint1.e  
 Integration File signal 2: autoint2.e  
 Quant Time: Sep 05 22:39:27 2023  
 Quant Method : Z:\pestpcbsrv\HPCHEM1\ECD\_L\methods\PL090523.M  
 Quant Title : GC Extractables  
 QLast Update : Tue Sep 05 15:22:36 2023  
 Response via : Initial Calibration  
 Integrator: ChemStation

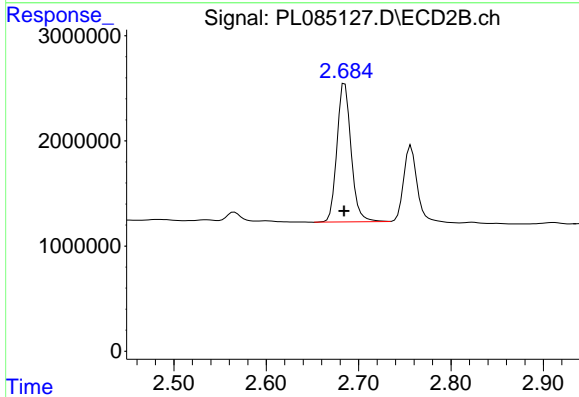
Volume Inj. : 1 µl  
 Signal #1 Phase : ZB-MR2 Signal #2 Phase: ZB-MR1  
 Signal #1 Info : 30M x 0.32mm x0.2 Signal #2 Info : 30M x 0.32mm x0.5µm



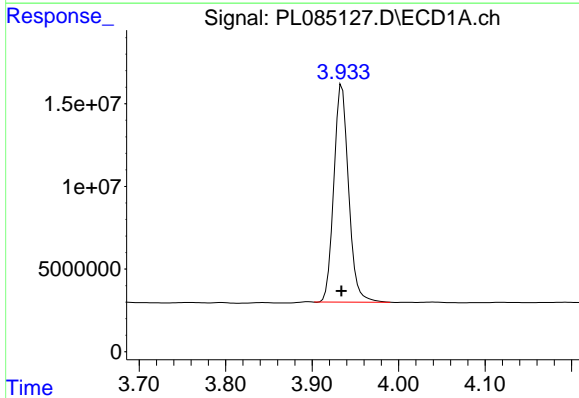


#1 Tetrachloro-m-xylene  
 R.T.: 3.477 min  
 Delta R.T.: 0.000 min  
 Response: 30297447  
 Conc: 12.39 ng/ml

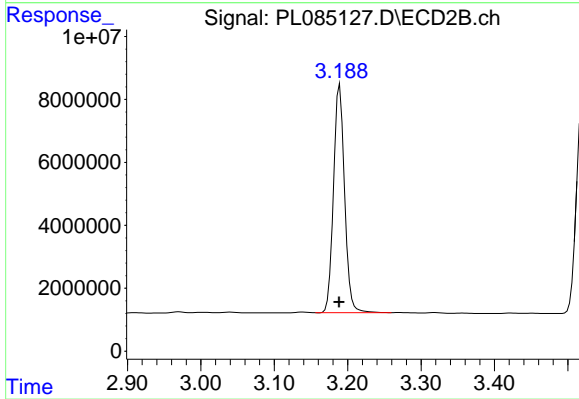
Instrument :  
 ECD\_L  
 ClientSampleId :  
 C-2MS



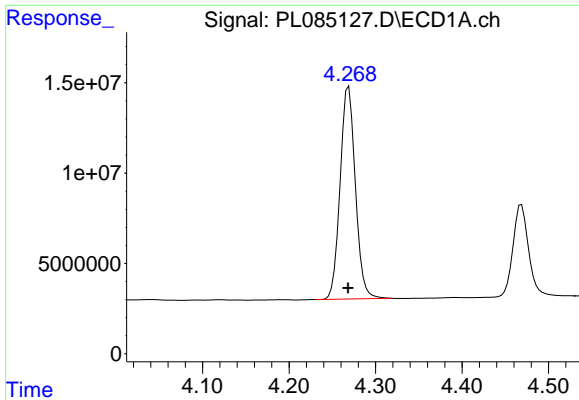
#1 Tetrachloro-m-xylene  
 R.T.: 2.685 min  
 Delta R.T.: 0.000 min  
 Response: 14034355  
 Conc: 12.35 ng/ml



#2 alpha-BHC  
 R.T.: 3.935 min  
 Delta R.T.: 0.000 min  
 Response: 155193707  
 Conc: 45.04 ng/ml



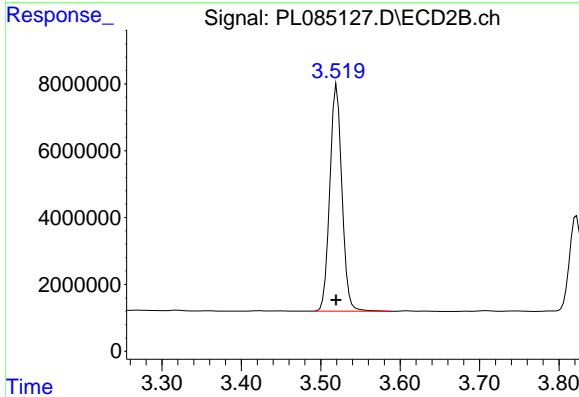
#2 alpha-BHC  
 R.T.: 3.189 min  
 Delta R.T.: 0.000 min  
 Response: 76103367  
 Conc: 46.53 ng/ml



#3 gamma-BHC (Lindane)

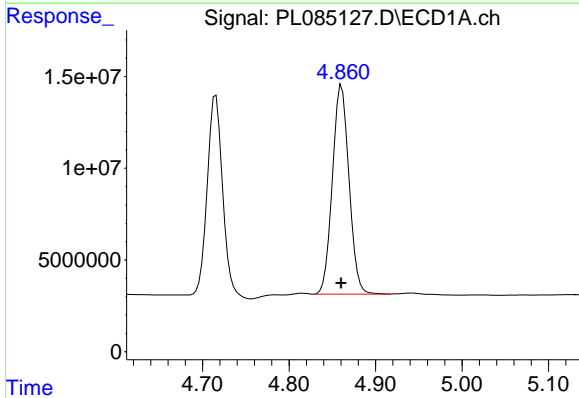
R.T.: 4.269 min  
Delta R.T.: 0.000 min  
Response: 143324847  
Conc: 43.17 ng/ml

Instrument :  
ECD\_L  
ClientSampleId :  
C-2MS



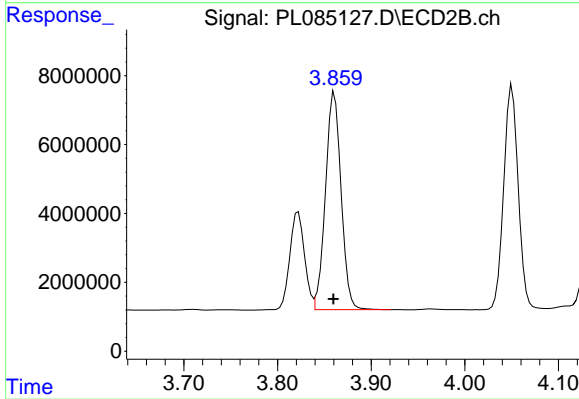
#3 gamma-BHC (Lindane)

R.T.: 3.520 min  
Delta R.T.: 0.000 min  
Response: 71726266  
Conc: 44.94 ng/ml



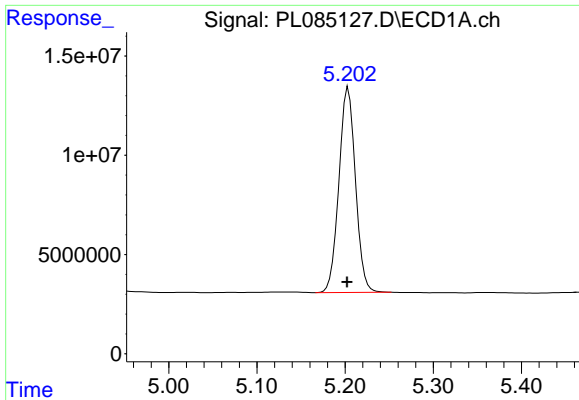
#4 Heptachlor

R.T.: 4.861 min  
Delta R.T.: 0.000 min  
Response: 151872738  
Conc: 46.06 ng/ml



#4 Heptachlor

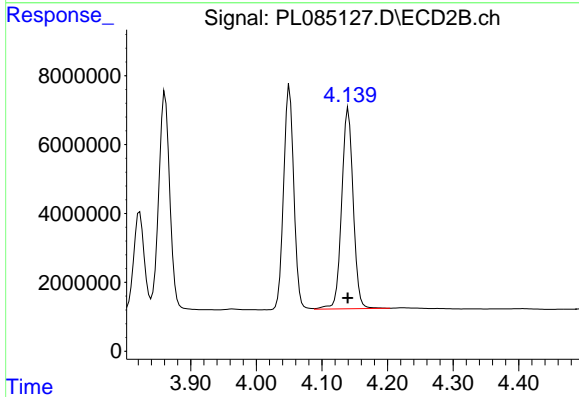
R.T.: 3.861 min  
Delta R.T.: 0.000 min  
Response: 73356154  
Conc: 48.34 ng/ml



#5 Aldrin

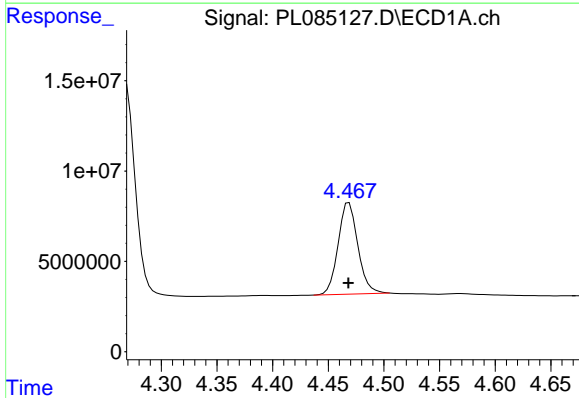
R.T.: 5.204 min  
 Delta R.T.: 0.001 min  
 Response: 134777759  
 Conc: 43.83 ng/ml

Instrument :  
 ECD\_L  
 ClientSampleId :  
 C-2MS



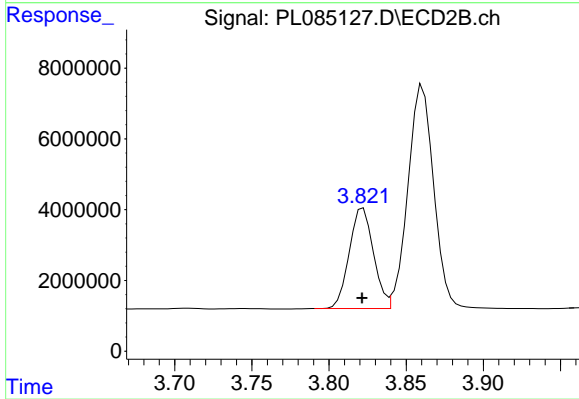
#5 Aldrin

R.T.: 4.140 min  
 Delta R.T.: 0.000 min  
 Response: 70931852  
 Conc: 46.40 ng/ml



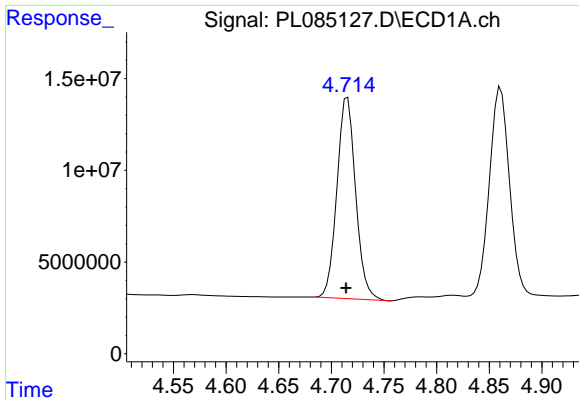
#6 beta-BHC

R.T.: 4.469 min  
 Delta R.T.: 0.000 min  
 Response: 62708728  
 Conc: 44.37 ng/ml



#6 beta-BHC

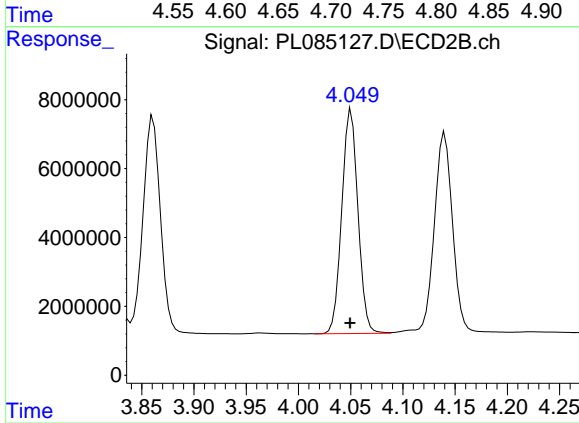
R.T.: 3.822 min  
 Delta R.T.: 0.000 min  
 Response: 31016189  
 Conc: 45.71 ng/ml



#7 delta-BHC

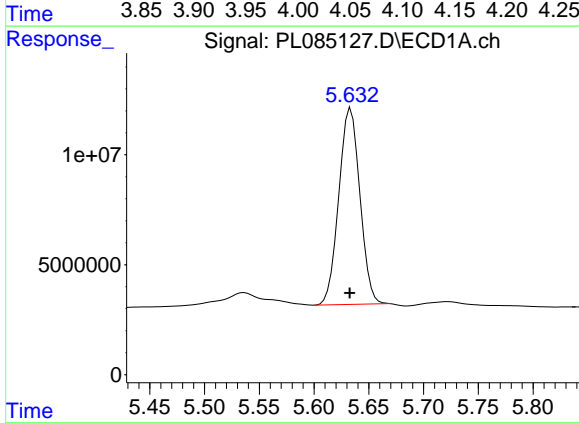
R.T.: 4.715 min  
 Delta R.T.: 0.001 min  
 Response: 136062662  
 Conc: 43.05 ng/ml

Instrument :  
 ECD\_L  
 ClientSampleId :  
 C-2MS



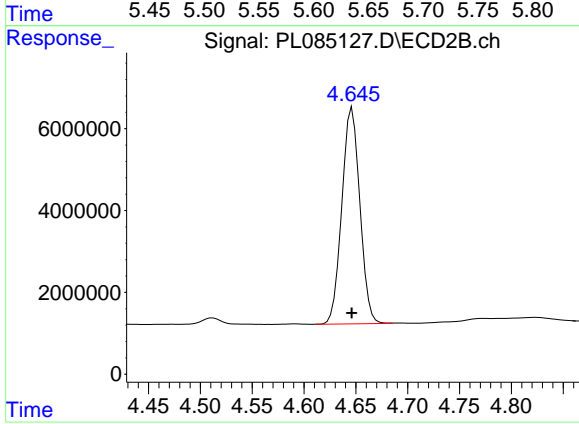
#7 delta-BHC

R.T.: 4.050 min  
 Delta R.T.: 0.000 min  
 Response: 70083830  
 Conc: 44.82 ng/ml



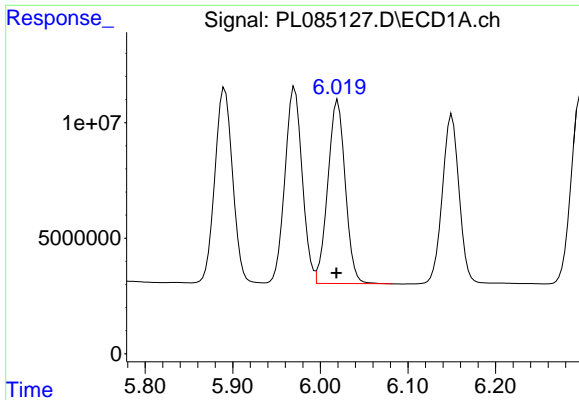
#8 Heptachlor epoxide

R.T.: 5.634 min  
 Delta R.T.: 0.000 min  
 Response: 119738006  
 Conc: 45.88 ng/ml



#8 Heptachlor epoxide

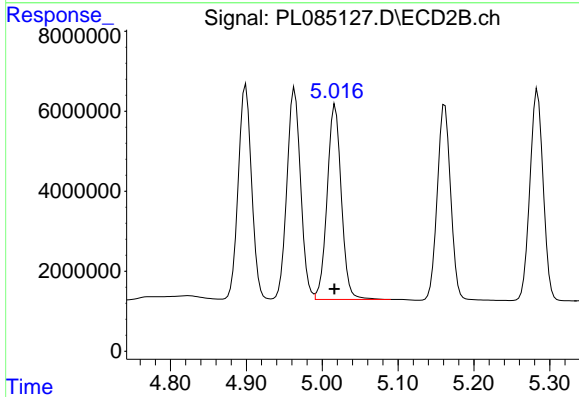
R.T.: 4.647 min  
 Delta R.T.: 0.000 min  
 Response: 63880621  
 Conc: 46.55 ng/ml



#9 Endosulfan I

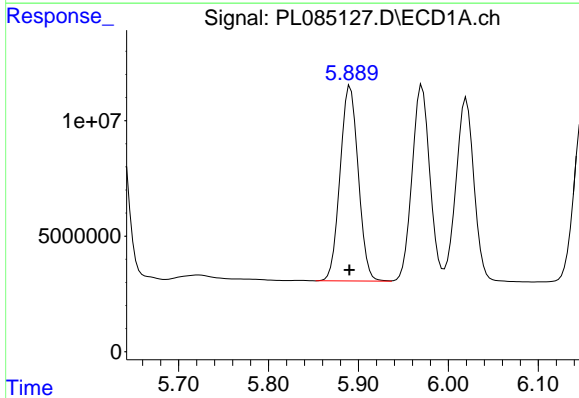
R.T.: 6.020 min  
 Delta R.T.: 0.002 min  
 Response: 109944496  
 Conc: 45.78 ng/ml

Instrument :  
 ECD\_L  
 ClientSampleId :  
 C-2MS



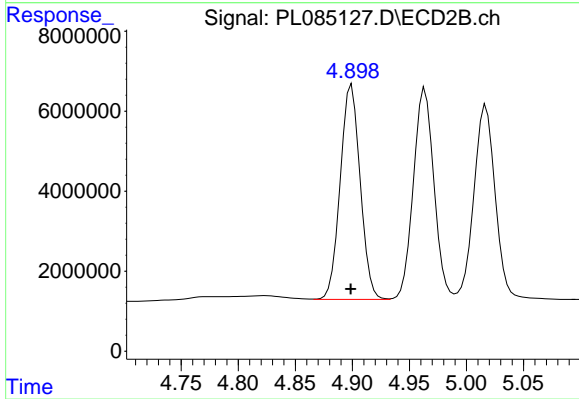
#9 Endosulfan I

R.T.: 5.017 min  
 Delta R.T.: 0.001 min  
 Response: 63443362  
 Conc: 45.94 ng/ml



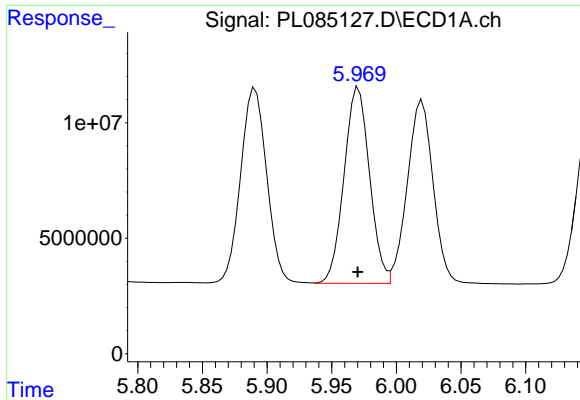
#10 gamma-Chlordane

R.T.: 5.891 min  
 Delta R.T.: 0.000 min  
 Response: 118513982  
 Conc: 45.62 ng/ml



#10 gamma-Chlordane

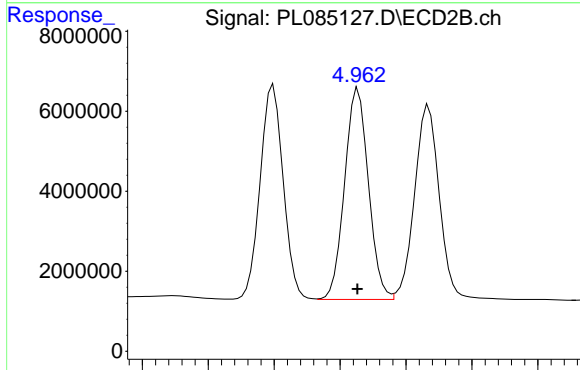
R.T.: 4.899 min  
 Delta R.T.: 0.000 min  
 Response: 65402439  
 Conc: 47.42 ng/ml



#11 alpha-Chlordane

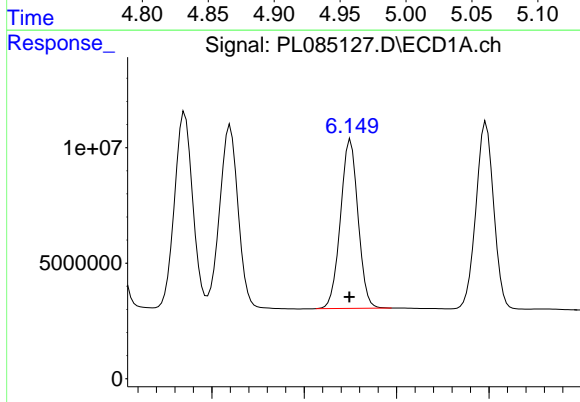
R.T.: 5.971 min  
 Delta R.T.: 0.000 min  
 Response: 116225375  
 Conc: 45.17 ng/ml

Instrument :  
 ECD\_L  
 ClientSampleId :  
 C-2MS



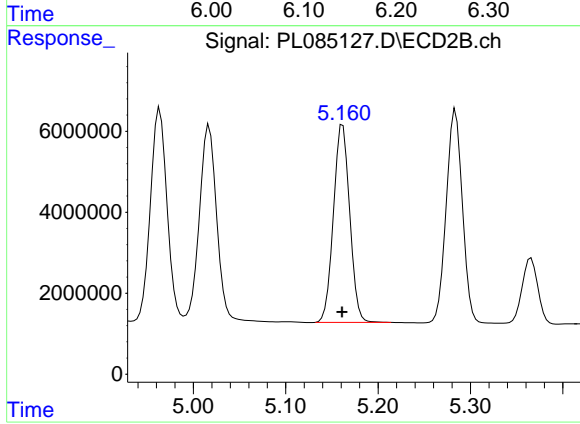
#11 alpha-Chlordane

R.T.: 4.964 min  
 Delta R.T.: 0.000 min  
 Response: 66330340  
 Conc: 44.39 ng/ml



#12 4,4'-DDE

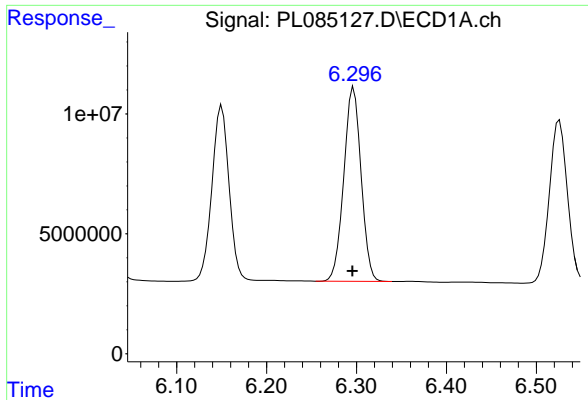
R.T.: 6.150 min  
 Delta R.T.: 0.001 min  
 Response: 96610116  
 Conc: 46.48 ng/ml



#12 4,4'-DDE

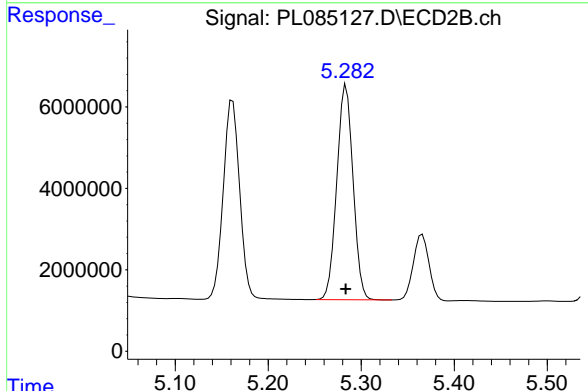
R.T.: 5.162 min  
 Delta R.T.: 0.000 min  
 Response: 59796844  
 Conc: 48.07 ng/ml



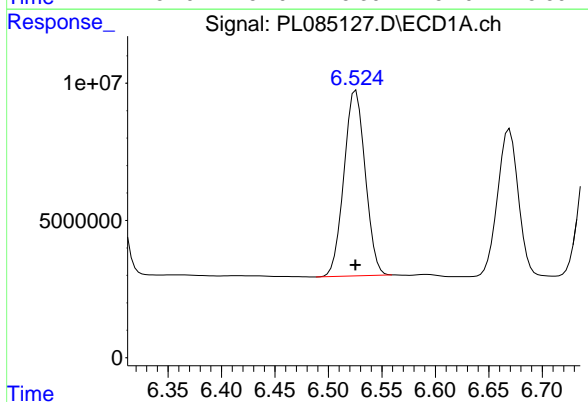


#13 Dieldrin  
 R.T.: 6.297 min  
 Delta R.T.: 0.001 min  
 Response: 108015214  
 Conc: 44.33 ng/ml

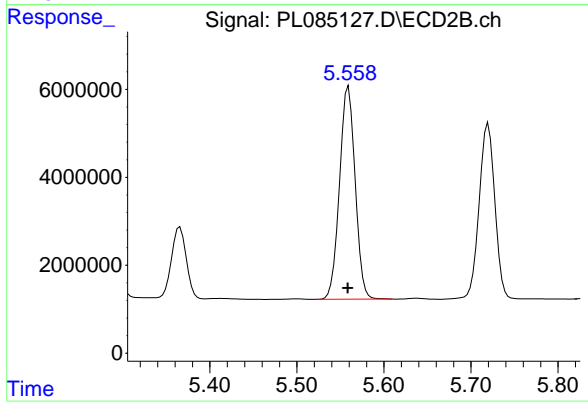
Instrument :  
 ECD\_L  
 ClientSampleId :  
 C-2MS



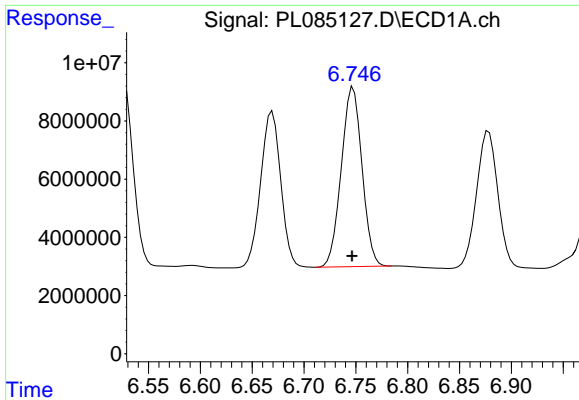
#13 Dieldrin  
 R.T.: 5.284 min  
 Delta R.T.: 0.000 min  
 Response: 64095094  
 Conc: 45.59 ng/ml



#14 Endrin  
 R.T.: 6.526 min  
 Delta R.T.: 0.000 min  
 Response: 93649491  
 Conc: 45.34 ng/ml



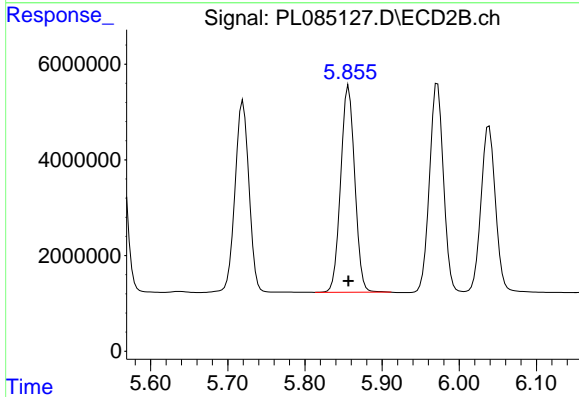
#14 Endrin  
 R.T.: 5.559 min  
 Delta R.T.: 0.001 min  
 Response: 60449875  
 Conc: 47.29 ng/ml



#15 Endosulfan II

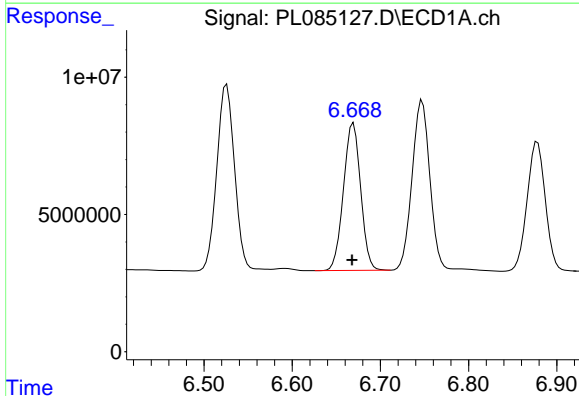
R.T.: 6.747 min  
 Delta R.T.: 0.001 min  
 Response: 85697306  
 Conc: 42.35 ng/ml

Instrument :  
 ECD\_L  
 ClientSampleId :  
 C-2MS



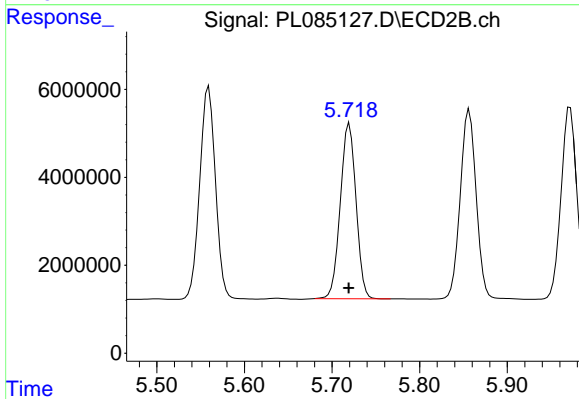
#15 Endosulfan II

R.T.: 5.857 min  
 Delta R.T.: 0.000 min  
 Response: 54490040  
 Conc: 44.01 ng/ml



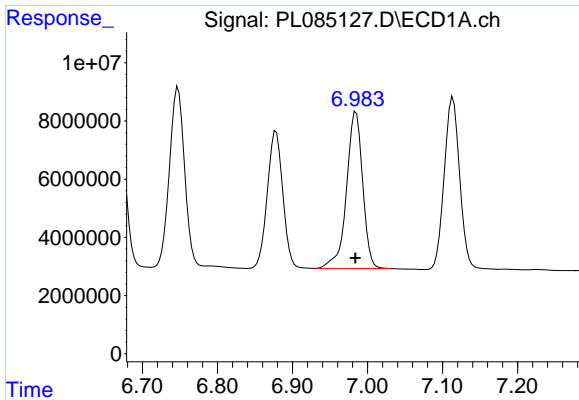
#16 4,4'-DDD

R.T.: 6.669 min  
 Delta R.T.: 0.002 min  
 Response: 72626856  
 Conc: 47.17 ng/ml



#16 4,4'-DDD

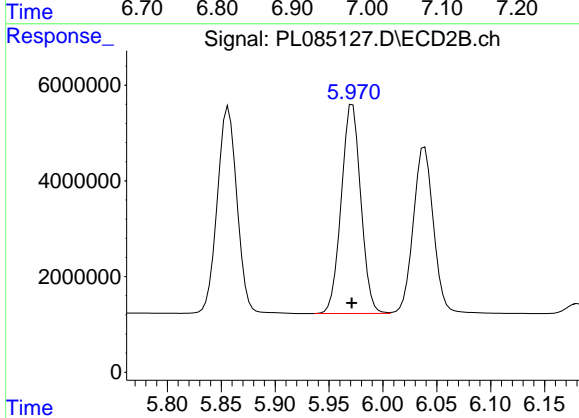
R.T.: 5.720 min  
 Delta R.T.: 0.000 min  
 Response: 49762557  
 Conc: 47.37 ng/ml



#17 4,4'-DDT

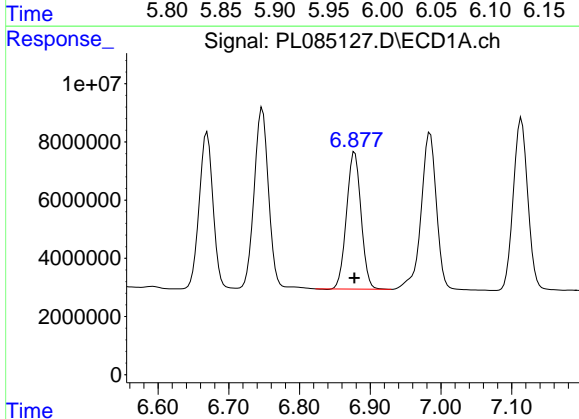
R.T.: 6.985 min  
 Delta R.T.: 0.000 min  
 Response: 80725602  
 Conc: 47.92 ng/ml

Instrument :  
 ECD\_L  
 ClientSampleId :  
 C-2MS



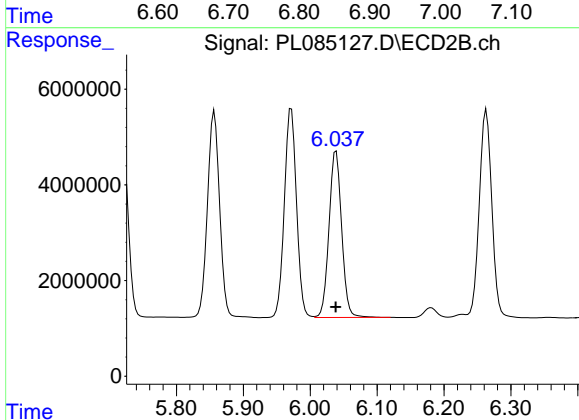
#17 4,4'-DDT

R.T.: 5.972 min  
 Delta R.T.: 0.000 min  
 Response: 55210163  
 Conc: 47.36 ng/ml



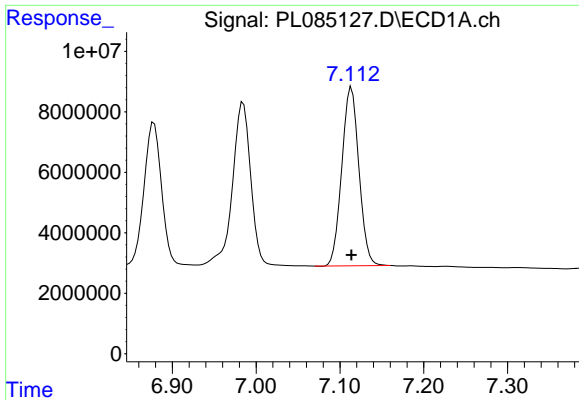
#18 Endrin aldehyde

R.T.: 6.878 min  
 Delta R.T.: 0.000 min  
 Response: 67304680  
 Conc: 43.79 ng/ml



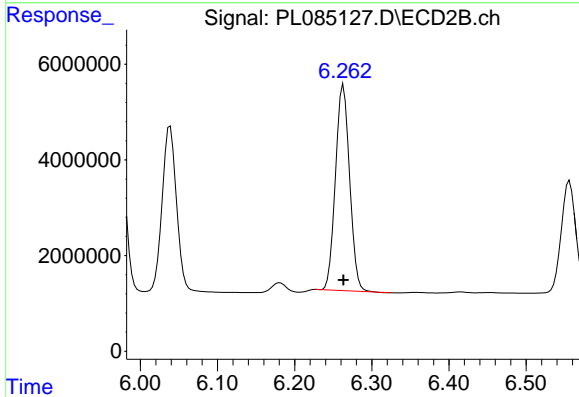
#18 Endrin aldehyde

R.T.: 6.039 min  
 Delta R.T.: 0.000 min  
 Response: 45479334  
 Conc: 44.52 ng/ml

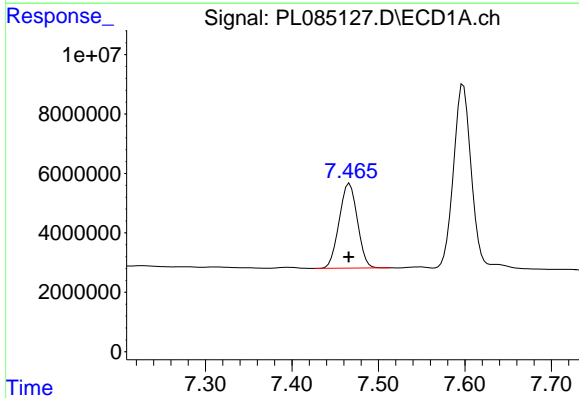


#19 Endosulfan Sulfate  
 R.T.: 7.114 min  
 Delta R.T.: 0.000 min  
 Response: 83951681  
 Conc: 44.85 ng/ml

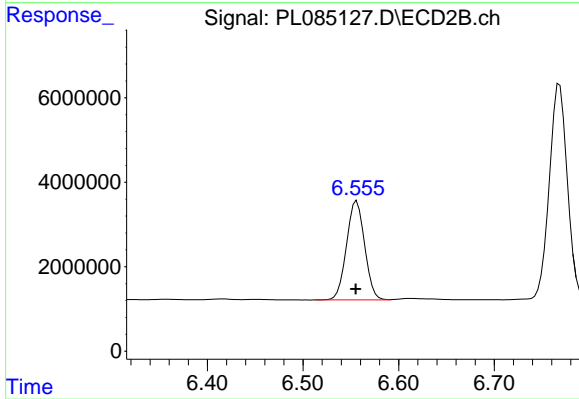
Instrument :  
 ECD\_L  
 ClientSampleId :  
 C-2MS



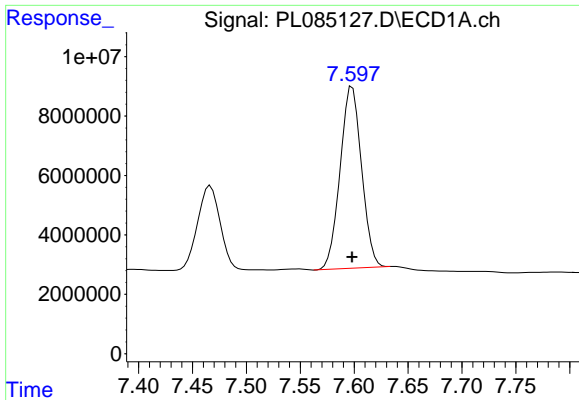
#19 Endosulfan Sulfate  
 R.T.: 6.263 min  
 Delta R.T.: 0.000 min  
 Response: 54887186  
 Conc: 45.74 ng/ml



#20 Methoxychlor  
 R.T.: 7.467 min  
 Delta R.T.: 0.000 min  
 Response: 41471860  
 Conc: 45.64 ng/ml



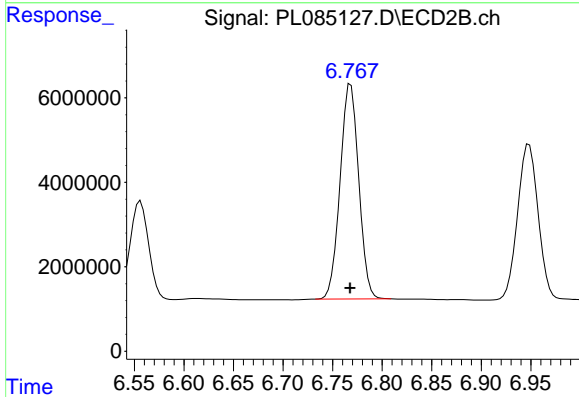
#20 Methoxychlor  
 R.T.: 6.556 min  
 Delta R.T.: 0.001 min  
 Response: 31010970  
 Conc: 46.10 ng/ml



#21 Endrin ketone

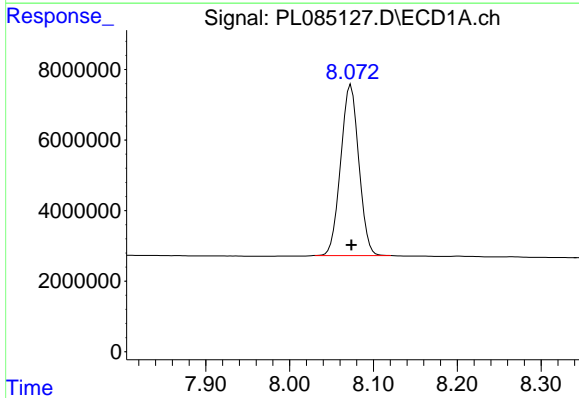
R.T.: 7.598 min  
 Delta R.T.: 0.000 min  
 Response: 84665257  
 Conc: 43.22 ng/ml

Instrument :  
 ECD\_L  
 ClientSampleId :  
 C-2MS



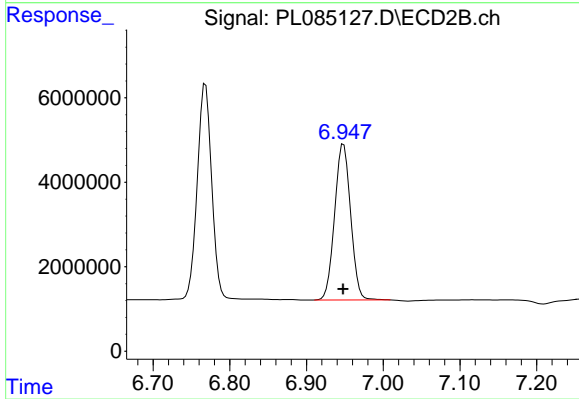
#21 Endrin ketone

R.T.: 6.768 min  
 Delta R.T.: 0.000 min  
 Response: 66670232  
 Conc: 45.20 ng/ml



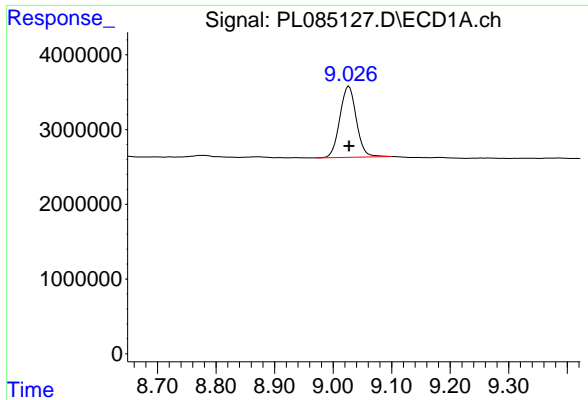
#22 Mirex

R.T.: 8.073 min  
 Delta R.T.: 0.000 min  
 Response: 72875182  
 Conc: 43.76 ng/ml



#22 Mirex

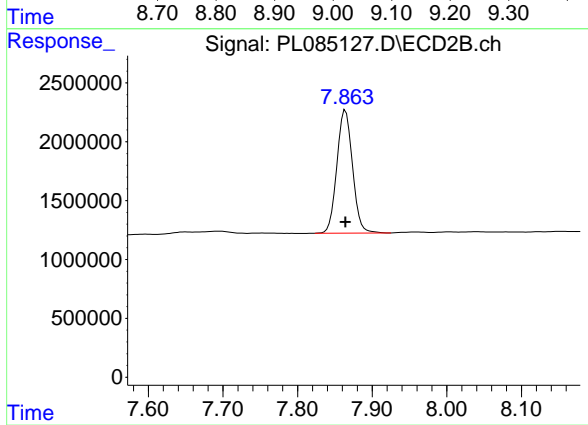
R.T.: 6.948 min  
 Delta R.T.: 0.000 min  
 Response: 53536805  
 Conc: 45.21 ng/ml



#28 Decachlorobiphenyl

R.T.: 9.027 min  
Delta R.T.: 0.000 min  
Response: 18660376  
Conc: 11.60 ng/ml

Instrument :  
ECD\_L  
ClientSampleId :  
C-2MS



#28 Decachlorobiphenyl

R.T.: 7.864 min  
Delta R.T.: 0.000 min  
Response: 15216443  
Conc: 11.43 ng/ml