

Data Path : Z:\pestpcbsrv\HPCHEM1\ECD_L\Data\PL090618\
 Data File : PL039723.D
 Signal(s) : Signal #1: ECD1A.ch Signal #2: ECD2B.ch
 Acq On : 06 Sep 2018 15:11
 Operator : AJ\SJ
 Sample : J4782-05
 Misc :
 ALS Vial : 8 Sample Multiplier: 1

Instrument :
 ECD_L
 ClientSampleId :
 ENY-SB-104-05-06-07-08-09-9.5-10

Integration File signal 1: autoint1.e
 Integration File signal 2: autoint2.e
 Quant Time: Sep 07 04:09:56 2018
 Quant Method : Z:\pestpcbsrv\HPCHEM1\ECD_L\methods\PL081318.M
 Quant Title : GC Extractables
 QLast Update : Wed Aug 15 15:04:22 2018
 Response via : Initial Calibration
 Integrator: ChemStation

Volume Inj. : 2 µl
 Signal #1 Phase : ZB-MR1 Signal #2 Phase: ZB-MR2
 Signal #1 Info : 30M x 0.32mm x0.5 Signal #2 Info : 30M x 0.32mm x0.25µm

Compound	RT#1	RT#2	Resp#1	Resp#2	ng/ml	ng/ml

System Monitoring Compounds						
1) SA Tetrachlo...	3.302	3.905	109.7E6	48911671	15.692	18.245
28) SA Decachlor...	7.956	8.892	88285383	33469319	12.570	14.423

Target Compounds

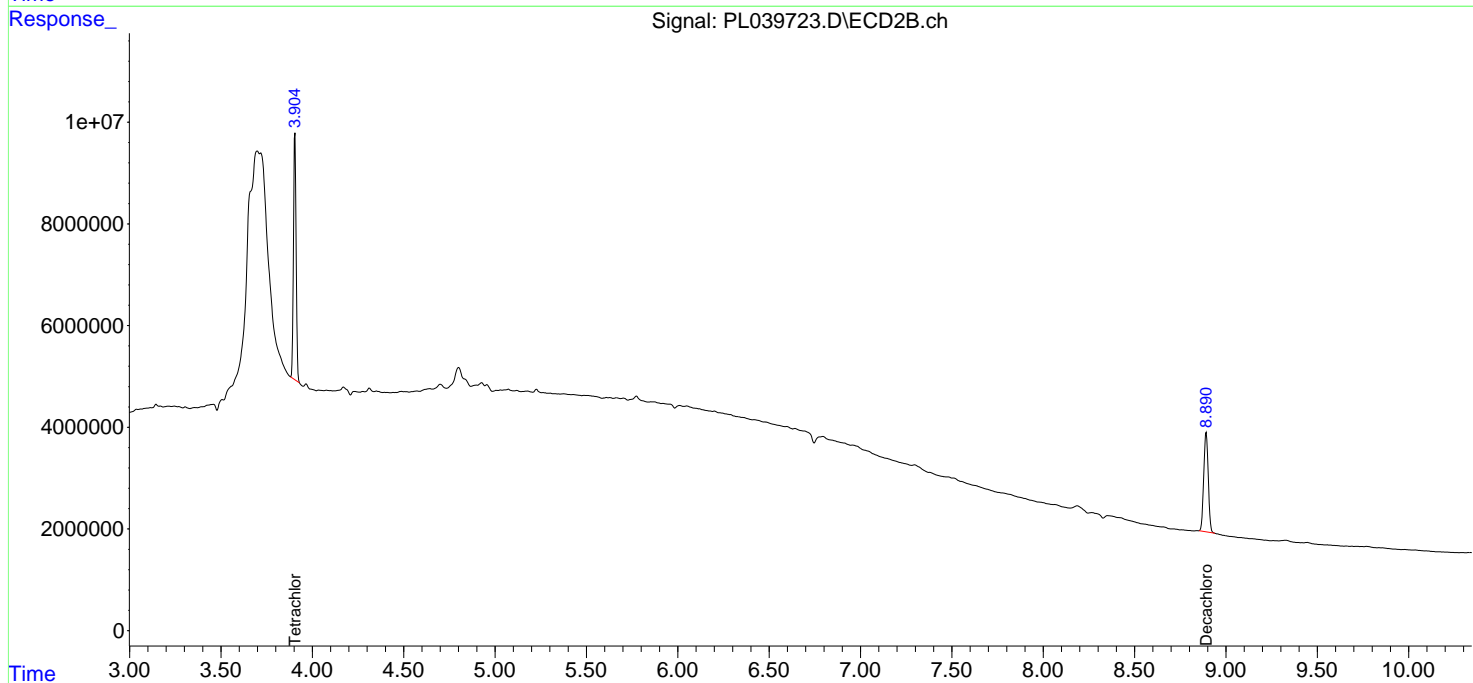
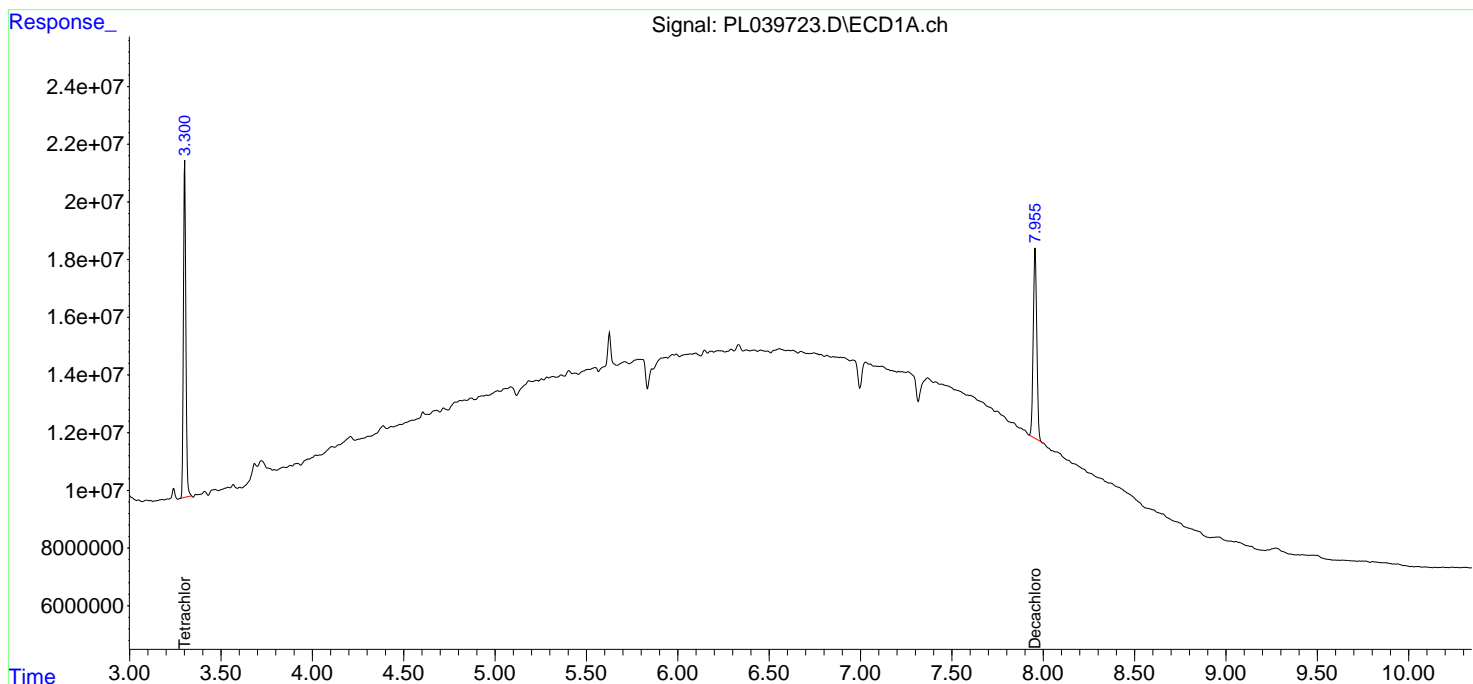
(f)=RT Delta > 1/2 Window (#)=Amounts differ by > 25% (m)=manual int.

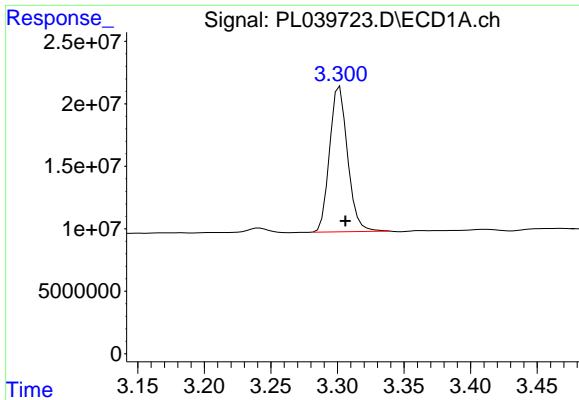
Data Path : Z:\pestpcbsrv\HPCHEM1\ECD_L\Data\PL090618\
 Data File : PL039723.D
 Signal(s) : Signal #1: ECD1A.ch Signal #2: ECD2B.ch
 Acq On : 06 Sep 2018 15:11
 Operator : AJ\SJ
 Sample : J4782-05
 Misc :
 ALS Vial : 8 Sample Multiplier: 1

Instrument :
 ECD_L
ClientSampleID :
 ENY-SB-104-05-06-07-08-09-9.5-10

Integration File signal 1: autoint1.e
 Integration File signal 2: autoint2.e
 Quant Time: Sep 07 04:09:56 2018
 Quant Method : Z:\pestpcbsrv\HPCHEM1\ECD_L\methods\PL081318.M
 Quant Title : GC Extractables
 QLast Update : Wed Aug 15 15:04:22 2018
 Response via : Initial Calibration
 Integrator: ChemStation

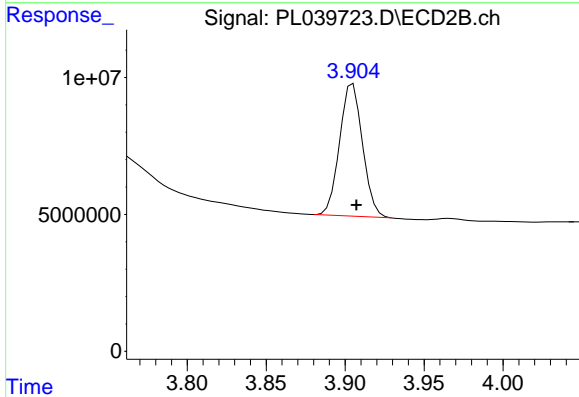
Volume Inj. : 2 µl
 Signal #1 Phase : ZB-MR1 Signal #2 Phase: ZB-MR2
 Signal #1 Info : 30M x 0.32mm x0.5 Signal #2 Info : 30M x 0.32mm x0.25µm



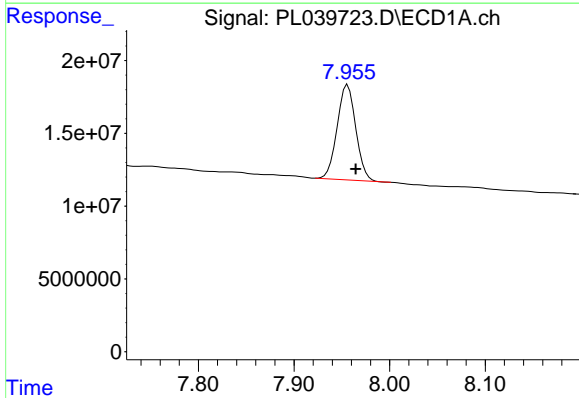


#1 Tetrachloro-m-xylene
 R.T.: 3.302 min
 Delta R.T.: -0.004 min
 Response: 109695028
 Conc: 15.69 ng/ml

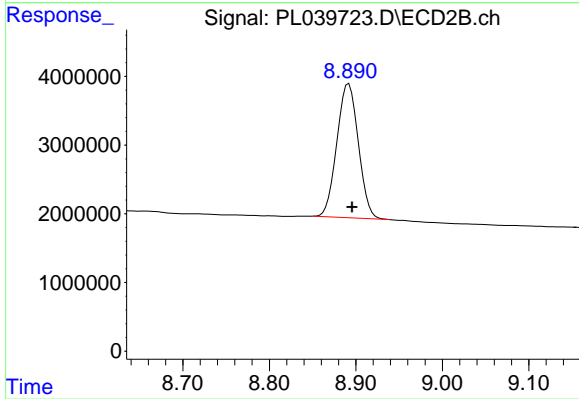
Instrument :
 ECD_L
 ClientSampleId :
 ENY-SB-104-05-06-07-08-09-9.5-10



#1 Tetrachloro-m-xylene
 R.T.: 3.905 min
 Delta R.T.: -0.002 min
 Response: 48911671
 Conc: 18.24 ng/ml



#28 Decachlorobiphenyl
 R.T.: 7.956 min
 Delta R.T.: -0.008 min
 Response: 88285383
 Conc: 12.57 ng/ml



#28 Decachlorobiphenyl
 R.T.: 8.892 min
 Delta R.T.: -0.004 min
 Response: 33469319
 Conc: 14.42 ng/ml